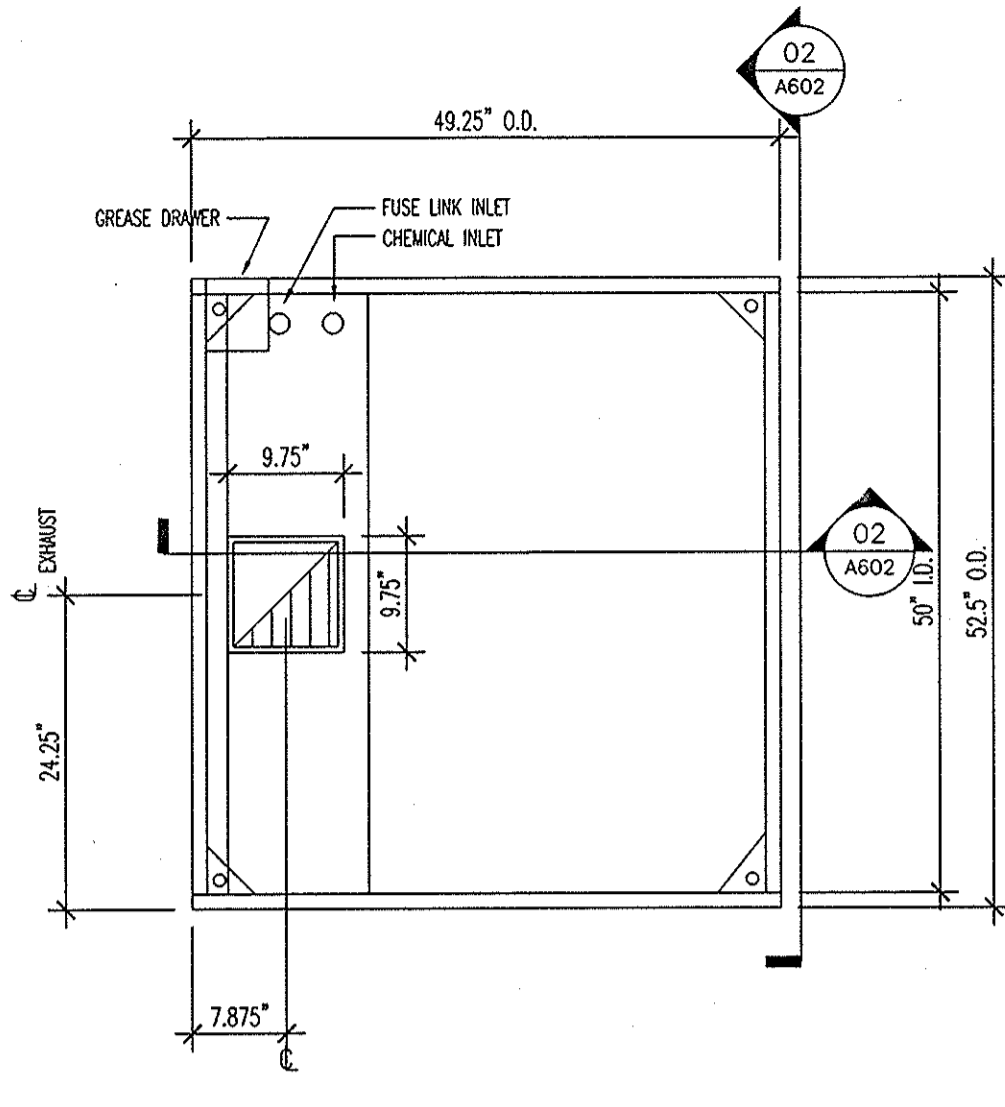


1
A603
FRYER HOOD PLAN (5 BANK)
SCALE: 3/4"=1'-0"

| CALCULATIONS | |
|--|---------------------------------|
| BROILER HOOD SUPPORT | |
| 24" 162.5 24" | |
| WEIGHT OF HOOD: 650 LBS./4 HANGERS =162.5 LBS./HOOD N=1950 INLBS. | |
| REQ'D S: 1950/20,000=10 IN. 3 S FURNRY 22293/16 =19 IN. 3 | |
| DUCT VELOCITIES | |
| BROILER HOOD: B.K. (EXHAUST) SPECS = 1000 CFM | |
| DUCT VELOCITY = | 1125 / (8.75 x 9.75) = 1704 FPM |
| | 144 |
| FRYER HOOD: B.K. (EXHAUST) SPECS = 1125 CFM | |
| DUCT VELOCITY = | 1125 / (8.5 x 8.5) = 2242 FPM |
| | 144 |



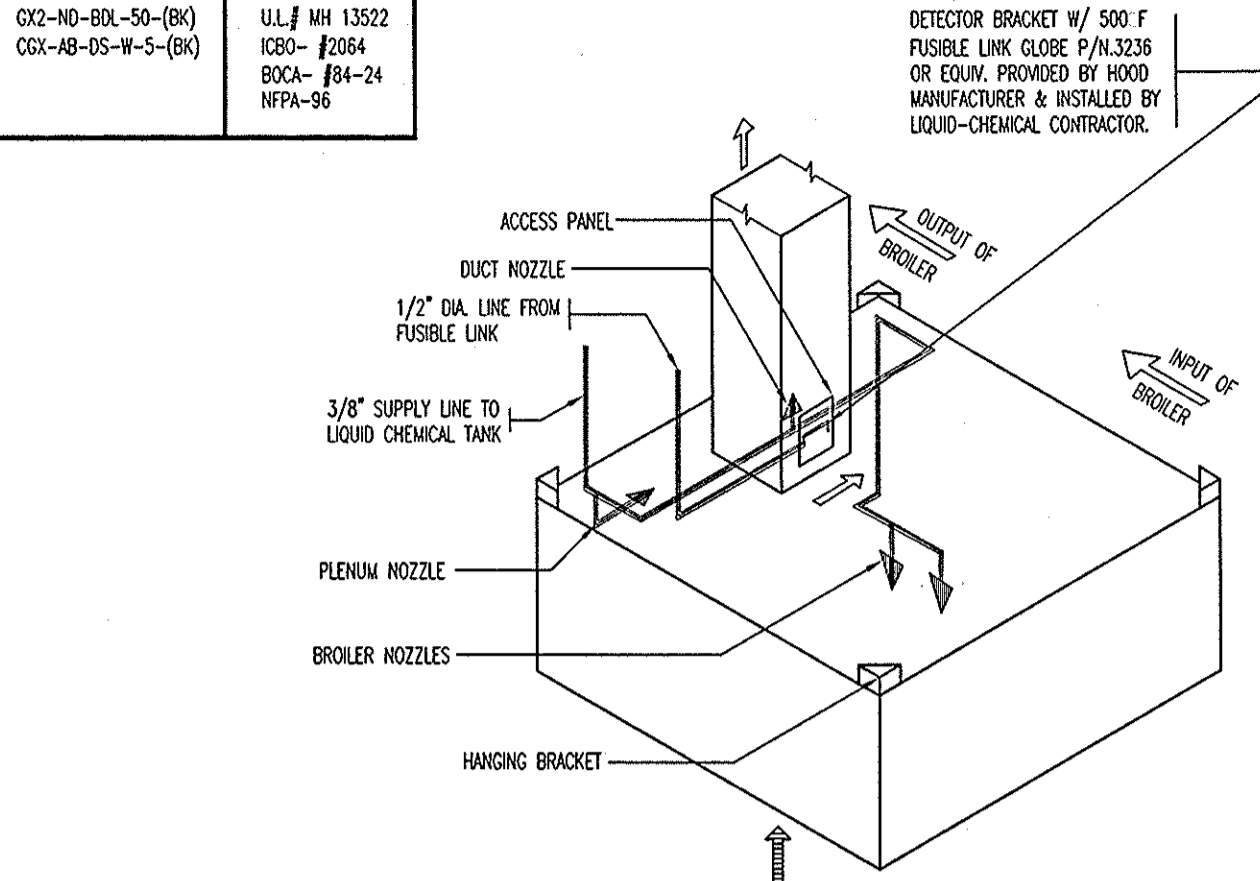
2
A603
BROILER HOOD PLAN
SCALE: 3/4"=1'-0"

| BURGER KING APPROVED HOODS | | | | |
|---|------------------------|---------------------------|--|---|
| SCHEDULE CONTAINS ITEMS NOT USED IN THIS BUILDING. CONTRACTOR TO VERIFY REQUIRED HOODS AND SIZES WITH SHEET EQ-1. | | | | |
| MANUFACTURER | BROILER HOOD MODEL NO. | FRYER HOOD SIZE MODEL NO. | BROILER/FRYER HOOD MODEL NO. | REMARKS |
| GAYLORD EAST CORP. | 012-ND-60L-50-(BK) | 59" 69H-ND-3-(BK) | 012-ND-60L-50-(BK) 001-AB-05-W-5-(BK) | U.L. # MH 13522 K80- P2084 800A- 84-24 NFPA-96 |
| | | 76" 69H-ND-05-(BK) | | |
| | | 91" 69H-ND-05-W-5-(BK) | | |
| | | 140" 69H-ND-0-0-(BK) | | |

HOOD NOTES:

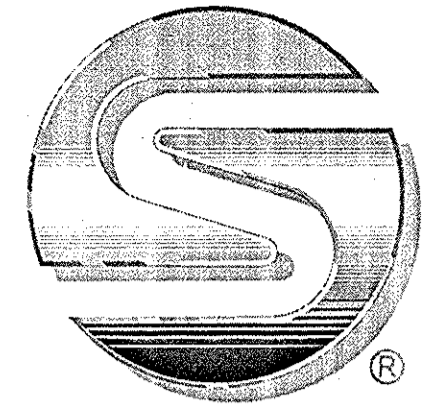
- ALL SEAMS AND JOINTS OF HOODS SHALL HAVE A LIQUID TIGHT CONTINUOUS EXTERIOR WELD. EXHAUST DUCTS SHALL HAVE AT LEAST 18 INCH CLEARANCE TO COMBUSTIBLE MATERIAL UNLESS PROTECTED FOR LESSER CLEARANCES WITH APPENDIX "A" OF NFPA-96-1984. ALL EXTERIOR DUCTS, EXCEPT STAINLESS, TO BE PROTECTED BY PAINT OR OTHER SUITABLE WEATHER COATING.
- FILTERS: TO BE U.L. CLASSIFIED GREASE FILTERS.
- A PRE-ENGINEERED ANSUL R-102 (NET) FIRE EXTINGUISHING SYSTEM MUST BE PROVIDED W/BOTH AUTOMATIC & MANUAL ACTIVATION OF THE SYSTEM. MANUAL STATION SHALL BE MOUNTED NOT LESS THAN 4'-6" AND NOT MORE THAN 5' FROM FLOOR AND SHALL BE CONVENIENTLY LOCATED IN THE PATH OF EXIT.
- THE OPERATION OF THE EXTINGUISHING SYSTEM SHALL AUTOMATICALLY SHUT OFF ALL SUPPLY TO GAS OR ELECTRICAL OPERATED EQUIPMENT LOCATED UNDER THE HOOD.
- EXHAUST FANS TO BE INTERLOCKED WITH ELECTRICAL CONTRACTORS AND/OR ELECTRICALLY OPERATED SAFETY VALVE FOR GAS OPERATED APPLIANCE.
- GENERAL CONTRACTOR AND/OR HVAC SUBCONTRACTOR IS RESPONSIBLE FOR MEETING ALL LOCAL HOOD/SHAFT INSTALLATION REQUIREMENTS AND THE HVAC SUBCONTRACTOR IS RESPONSIBLE FOR ALL REQUIRED MECHANICAL PERMITS.
- EXHAUST FANS ARE TO DISCHARGE A MIN. OF 12" ABOVE THE PARAPET IF THE PARAPET IS LOCATED WITHIN 10'-0" OF THE FAN.

3
A603
BROILER HOOD ISOMETRIC
SCALE: N.T.S.



FIRE PROTECTION NOTES

- ALL EXPOSED PIPE SHALL BE CHROME PLATED.
- ALL 1/2" & 3/4" FITTINGS SHALL BE WATERPROOF.
- EACH HOOD SHALL HAVE A SEPARATE ANSUL R-102 (LIQUID CHEMICAL) FIRE EXTINGUISHING SYSTEM. EACH SYSTEM SHALL WORK INDEPENDENTLY.
- FOR NUMBER OF FIRE EXTINGUISHING SYSTEMS SEE SHT. EQ-1.
- THE INSTALLATION AND OPERATION OF THE AUTO. FIRE PROTECTION SYS. SHALL BE CHECKED AND APPROVED BY THE LOCAL FIRE DEPARTMENT HAVING JURISDICTION. ALL EQUIPMENT AND ITS INSTALLATION SHALL BE AS PER NFPA-96 AND LOCAL CODES.
- INSTALLATION TO BE COORDINATED W/HOOD MFR. TO PREVENT SYSTEMS INTERFERENCE WITH OPERATION AND PERFORMANCE OF VENTILATORS.
- FIRE PROTECTION SYS. CONTR. TO FURNISH & INSTALL TWO PRE-PRINTED PLASTIC FACED NAME PLATES W/ 1/2" HIGH LETTERING. PLATES SHALL BE ADHESIVE APPLIED TO WALL & MOUNTED DIRECTLY BELOW REMOTE PULLS AND LABELED AS "BROILER" AND "FRYER" FOR THEIR RESPECTIVE OPERATION.
- THE PRE-PIPED HOODS SHALL COME COMPLETE WITH ALL THE FIRE PROTECTION NOZZLES AND BLOW-OFF CAPS, DETECTOR W/ 500F FUSIBLE LINK, AND POLISHED CHROME-PLATED SCHEDULE-40 PIPES & FITTINGS.
- ACCESSORIES SUPPLIED BY THE FIRE PROTECTION SYSTEM CONTRACTOR - EACH SYSTEM SHALL INCLUDE:
 - ANSUL AUTOMAN REGULATED RELEASE SYSTEM
 - ASSURER - P/N 71825
 - PRE-PRINTED ADHESIVE BACKED NAMEPLATES (BROILER AND FRYER)
 - REMOTE MANUAL PULL STATION - P/N 48335
 - SNAP-ACTION SWITCH ASSEMBLY - P/N 15549
 - ELECTR. AND PLUMB. CONTR. TO INSTALL AND/OR MAKE FINAL CONNECTION TO ACCESSORIES AS REQUIRED.
 - PLUMB. CONTR. TO FURNISH & INSTALL MECHANICAL GAS SHUT-OFF VALVES FOR FIRE PROTECTION SYS. VALVES CAN BE OBTAINED FROM THE FIRE PROTECTION SYSTEM SUPPLIER. ANSUL P/N - 55607 - 1 1/2"
 - CONTRACTOR SHALL PROVIDE AND INSTALL ANSUL SYSTEM
 - PROVIDE HORN & STROBE LIGHT TO BE INTERLOCKED W/ DETECTOR & ANSUL SYSTEM. HORN & LIGHT TO BE ACTIVATED UPON ACTIVATION OF SYSTEM

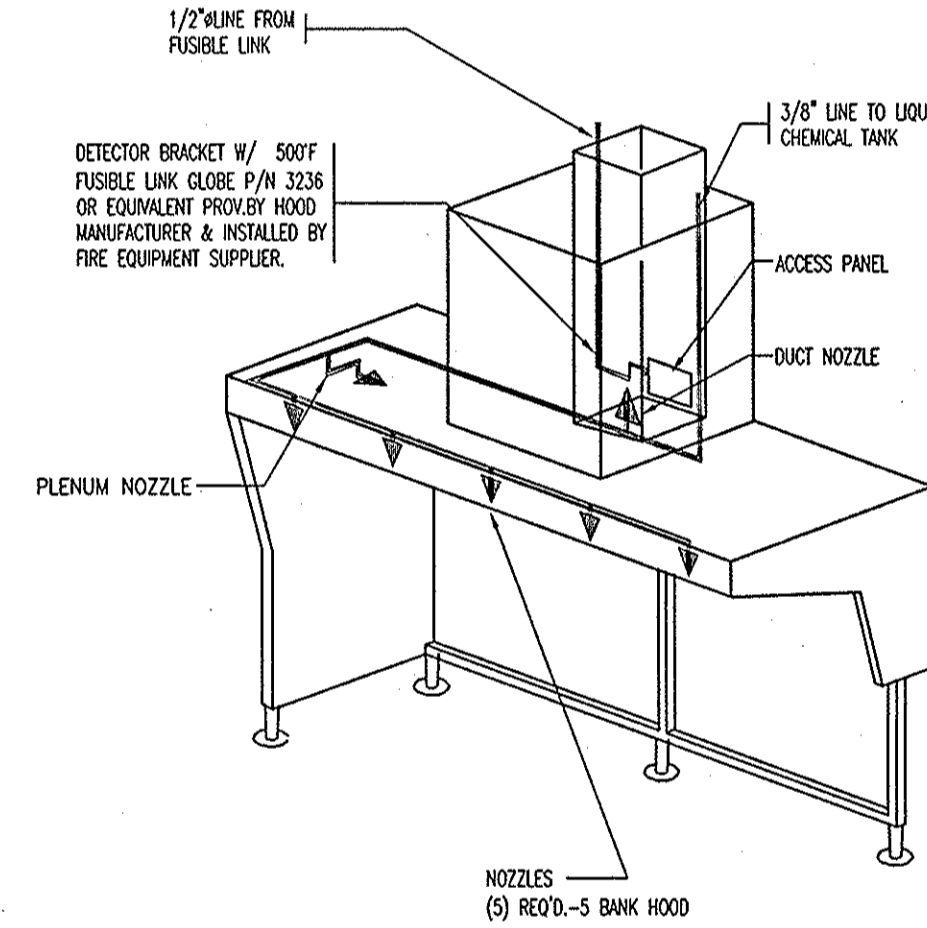


Stainless Incorporated
One Stainless Plaza
Deerfield Beach, Florida
33441-4798
954.421.4290
www.stainless.com

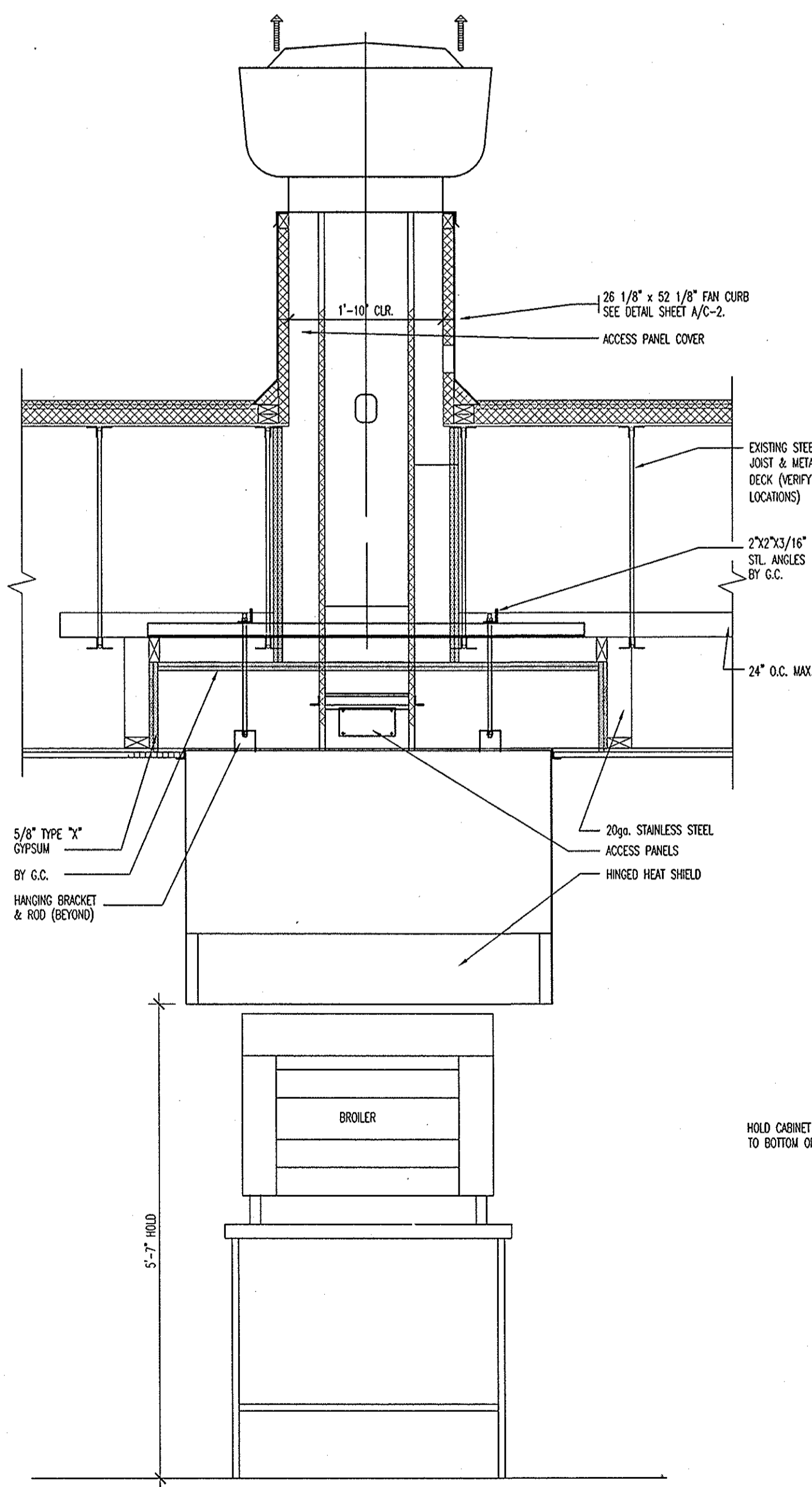
This drawing contains proprietary information, is the property of Stainless Incorporated and may not be reproduced or distributed without the expressed written permission of Stainless Incorporated.

NOTE:

THESE HOODS COME PRE-PIPED BY HOOD MANUFACTURER AS SHOWN BY HOOD MANUFACTURER BY CONTRACTOR

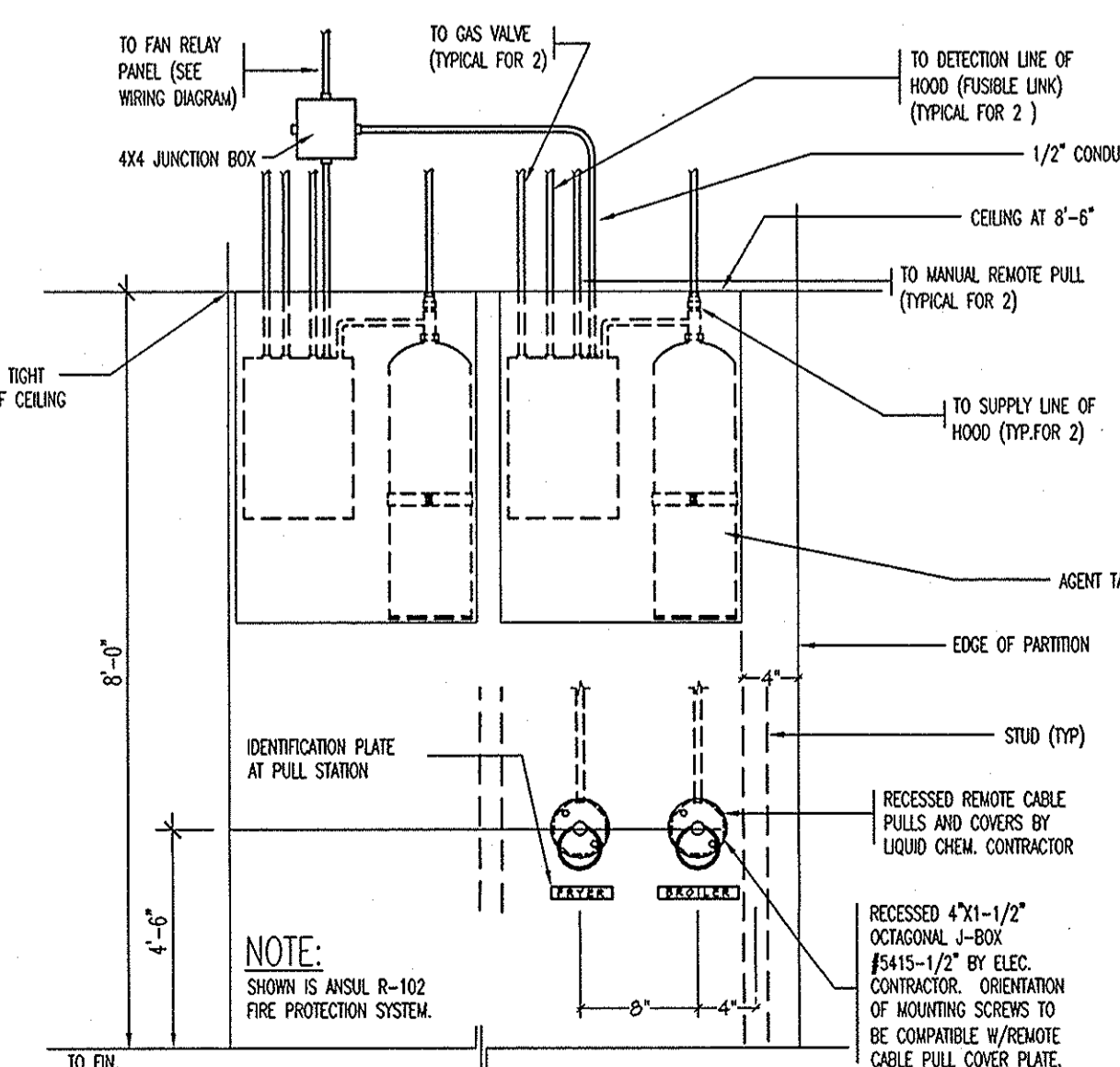


7
A603
FRYER HOOD ISOMETRIC
SCALE: N.T.S.

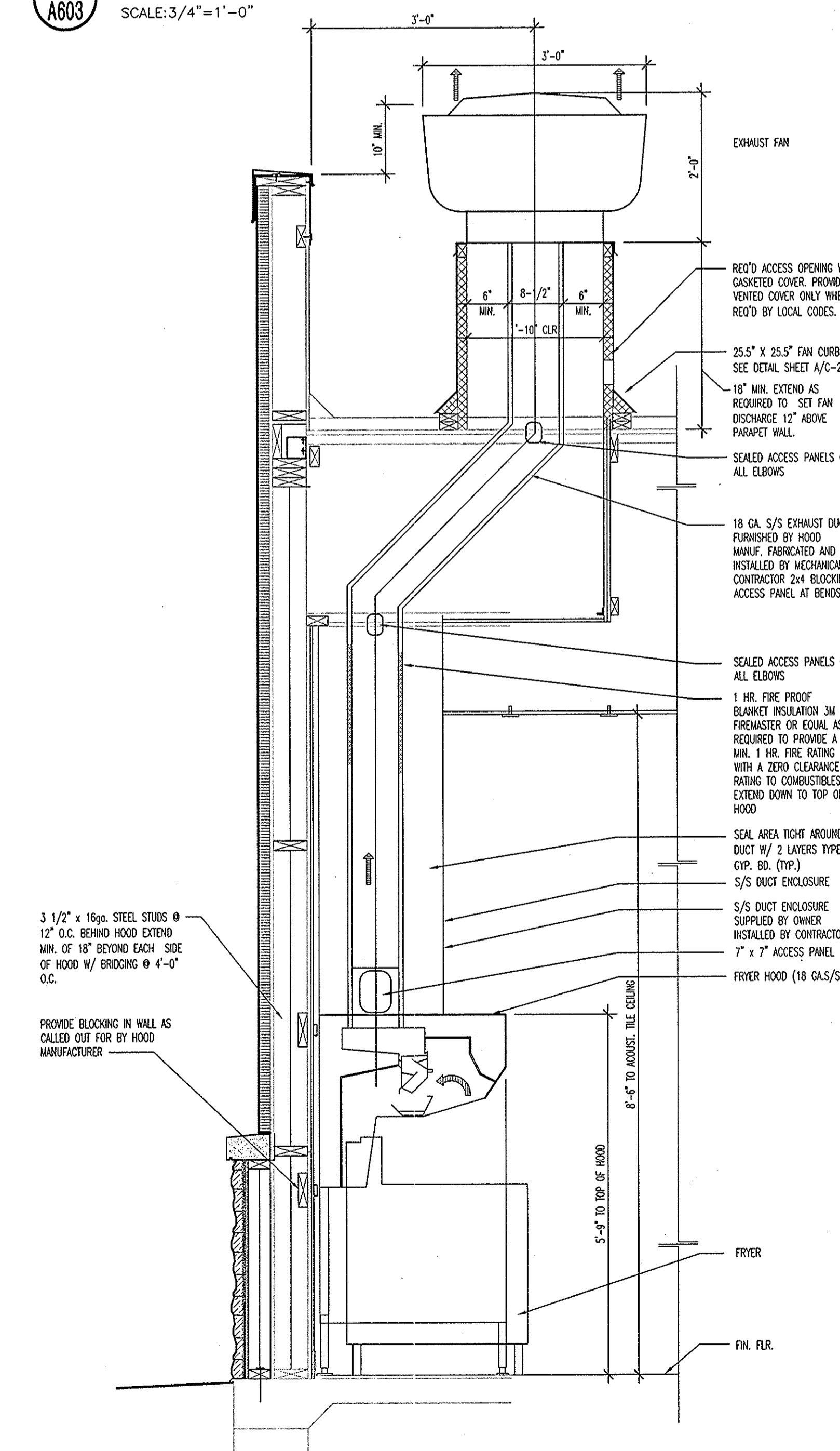


6
A603
BROILER HOOD ELEVATION
SCALE: 3/4"=1'-0"

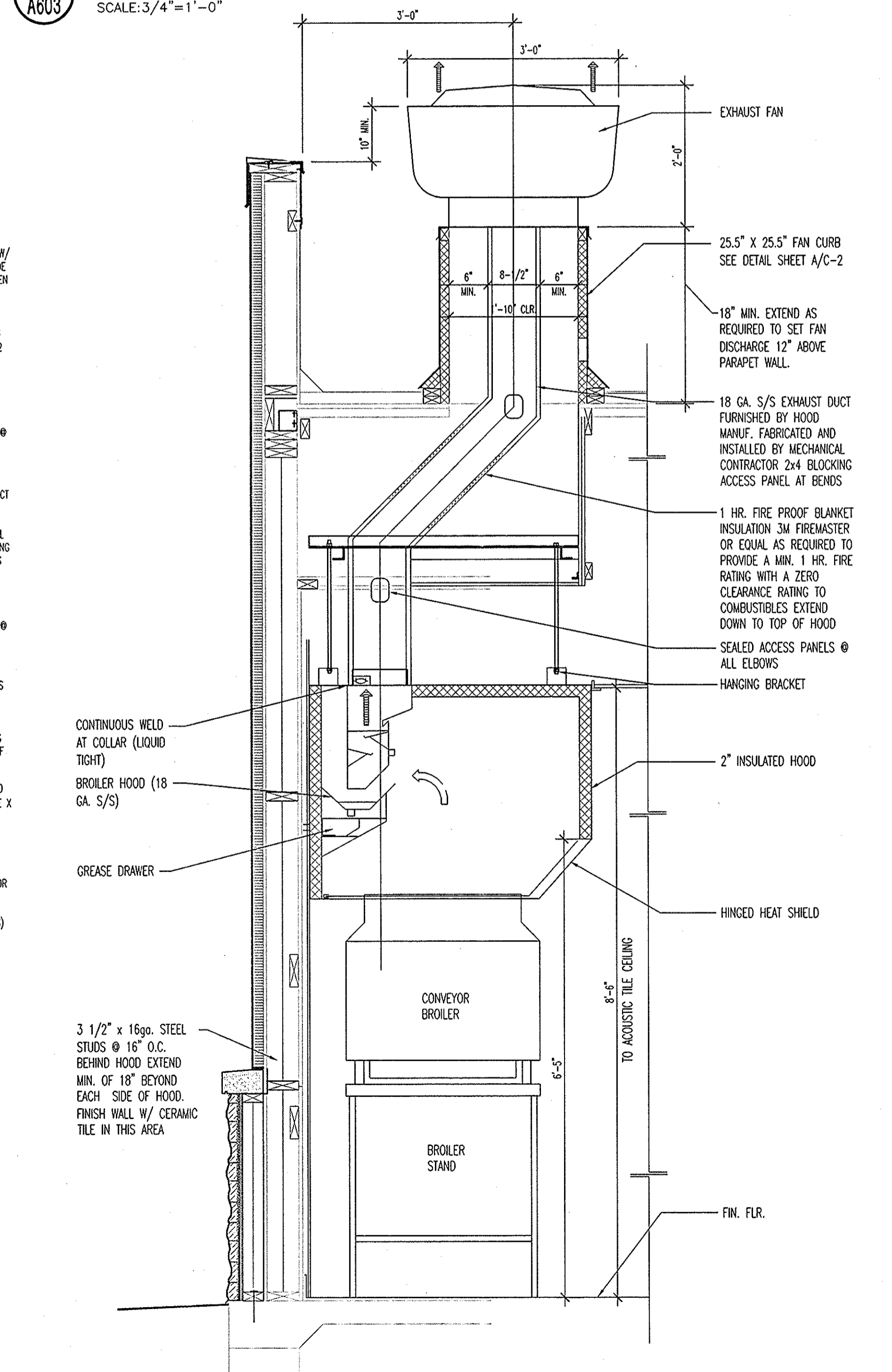
8
A603
TYPICAL LIQUID CHEMICAL SYSTEM
SCALE: 1"=1'-0"



NOTE:
SHOWN IS ANSUL R-102 FIRE PROTECTION SYSTEM.



4
A603
FRYER HOOD SECTION
SCALE: 3/4"=1'-0"



5
A603
BROILER HOOD SECTION
SCALE: 3/4"=1'-0"

| | |
|--|----------------|
| DATE | |
| BY | |
| DESCRIPTION | |
| REV. | |
| SCALE | AS SHOWN |
| JOB NUMBER | 2010-5068 |
| DATE | MAY 2, 2011 |
| DRAWN BY | MATT SCHUSTER |
| REVIEWED BY | STEVE LACLUYSE |
| DESIGNED BY | STEVE LACLUYSE |
| CONSTRUCTION DETAILS | |
| WIGHTMAN PETRIE SURVEYING ENGINEERING ENVIRONMENTAL LANDSCAPE ARCHITECTURE 412 South Lafayette Blvd. South Bend, IN 46601 p. 574.232.4388 f. 574.232.4333 | |
| BRAVOKILO, INC. Mishawaka, Indiana 4220 Edison Lakes Parkway | |
| Burger King Restaurant Kentwood, Michigan | |
| X-1710-A604 | |