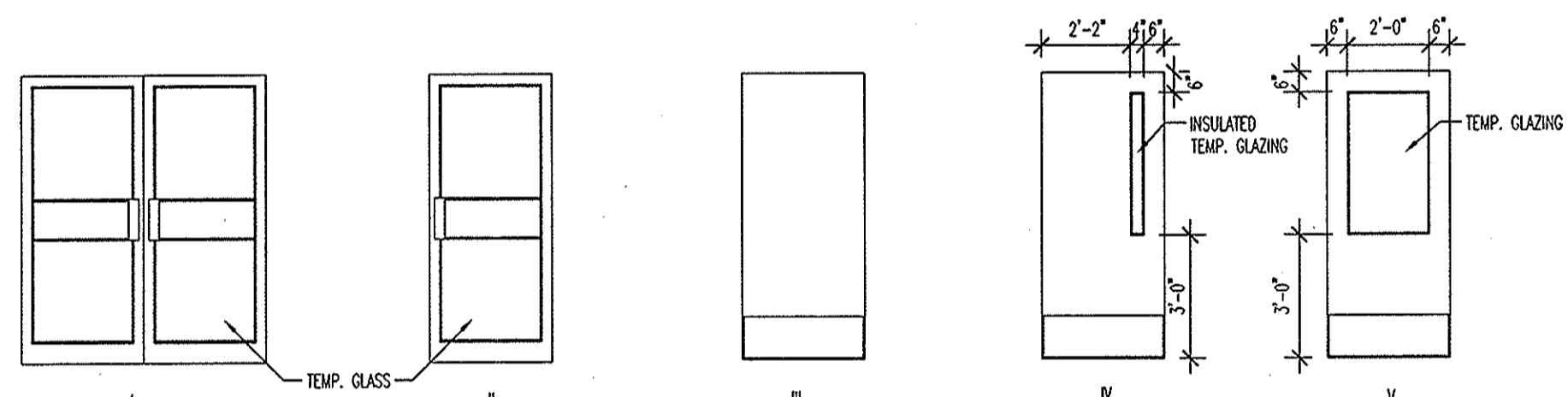


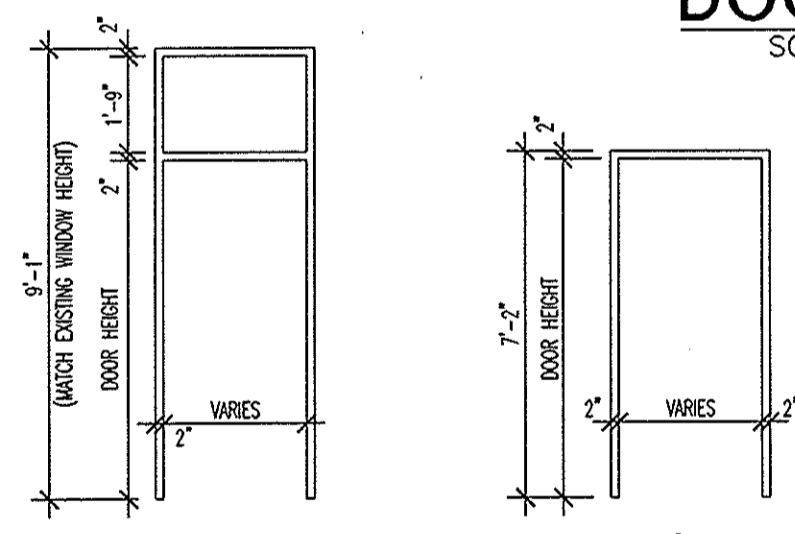
MARK	DOOR				FRAME			DETAILS			HARDWARE	SEALS	REMARKS
	TYPE	MATERIAL	WIDTH	HEIGHT	THICKNESS	TYPE	MATERIAL	HEAD	SILL	JAMB			
01	I	ALUM.	(2) 3'-0"	7'-0"	1 3/4"	A	ALUM.	A	A	A.2	2		NOTE 2
01A	I	ALUM.	(2) 3'-0"	7'-0"	1 3/4"	A	ALUM.	A.1	B	A.1	2		NOTE 2
04	III	HPL	3'-0"	7'-0"	1 3/4"	B	ALUM.	B	B	B	6		NOTE 6
05	IV	HM	3'-0"	7'-0"	1 3/4"	B	HM	C	C	C	8		NOTE 4
06	IV	HM	3'-0"	7'-0"	1 3/4"	B	HM	C	C	C	8		NOTE 4
09			EXST.	EXST.	EXST.	EXST.	EXST.				1		
10			EXST.	EXST.	EXST.	EXST.	EXST.				1		
11			EXST.	EXST.	EXST.	EXST.	EXST.				1		NOTE 4
12			EXST.	EXST.	EXST.	EXST.	EXST.				1		
14	II	ALUM.	3'-0"	7'-0"	1 3/4"	A	ALUM.	A	A	A.2	2		NOTE 2
14A	II	ALUM.	3'-0"	7'-0"	1 3/4"	A	ALUM.	A.1	B	A/A.1	2		NOTE 2
15	III	HPL	3'-0"	7'-0"	1 3/4"	B	ALUM.	B	B	B	4		NOTE 6
16	III	HPL	3'-0"	7'-0"	1 3/4"	B	ALUM.	B	B	B	4		NOTE 6
17	V	HPL	3'-0"	7'-0"	1 3/4"	B	ALUM.	B	B	B	5		NOTE 6

NOTE: ALL HOLLOW METAL DOOR & FRAMES ARE TO BE GALVANIZED

- DOOR SCHEDULE NOTES**
- NOT USED-
 - CONTRACTOR SHALL PROVIDE PANIC HARDWARE ON ALL EXIT DOORS.
 - SHOW PACKAGE TO INCLUDE THE FOLLOWING: (1) INTERLOCK, (2) LOCKS, (3) EXTENSION AND CORRESPONDING SIGNAGE IN GRADE 2 BRILLE PER ADA REQUIREMENTS. SIGNS TO BE FURNISHED BY DECOR SUPPLIER AND INSTALLED BY THE GENERAL CONTRACTOR.
 - HALL DOOR & FRAME SHALL BE PAINTED WITH GLOSS CHALK DRY EXTERIOR ENAMEL. COLOR: SEE ELEVATIONS FOR COLOR - SHEET A01
 - NOT USED-
 - PROVIDE WHITE SOLID CORE HPL DOORS WITH ALUMINUM FRAMES - VERIFY FINISH COLOR W/ DECOR PLANS
 - ALL GLASS WITHIN 48" OF ANY DOOR SHALL BE TEMPERED GLASS.
 - NOT USED.
 - ALUM. KICKPLATES ARE MOUNTED FLUSH TO THE BOTTOM OF THE DOORS.
 - NOT USED-
 - ALL DOOR CLOSERS SHALL BE LOCATED ON THE INTERIOR DOOR SIDE OF THE ROOM THAT THEY SERVE.
 - VERIFY ALL COLOR SELECTIONS W/ THE DECOR PLANS
 - HOLLOW METAL DOORS SHALL BE: CECO-METAL SERIES MESKER-DANON DOOR SERIES PIONEER-OIT SERIES OR EQUAL. IF AN ALTERNATE DOOR IS REQUESTED FOR USE BY THE CONTRACTOR, IT IS THE RESPONSIBILITY OF THE CONTRACTOR TO SUBMIT CATALOG CUTS OF THE ALTERNATE DOOR TO THE OWNER FOR REVIEW AND APPROVAL PRIOR TO INSTALLATION.



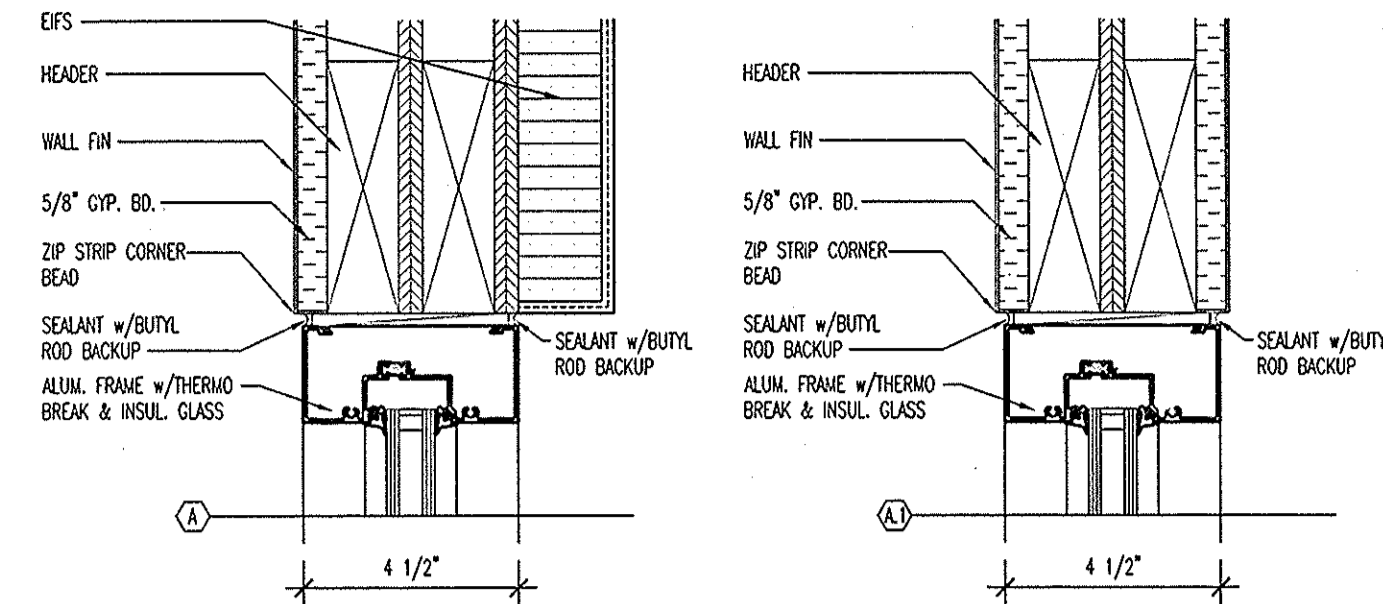
DOOR TYPES
SCALE: 1/4" = 1'-0"



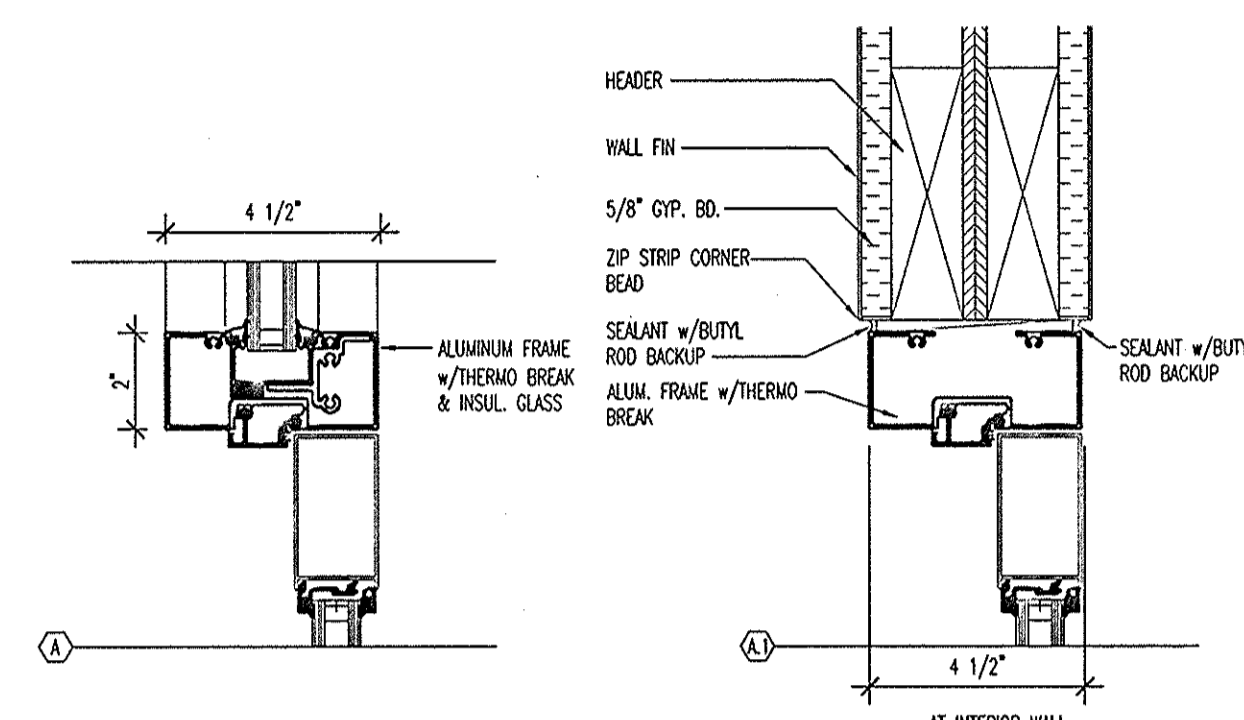
FRAME TYPES
SCALE: 1/4" = 1'-0"

DOOR HARDWARE SCHEDULE

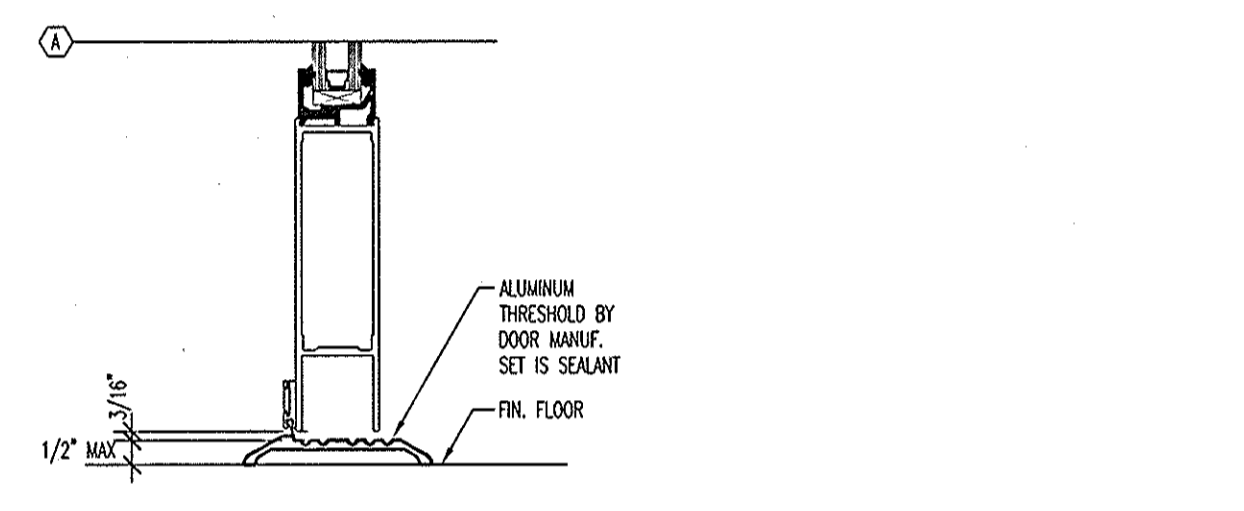
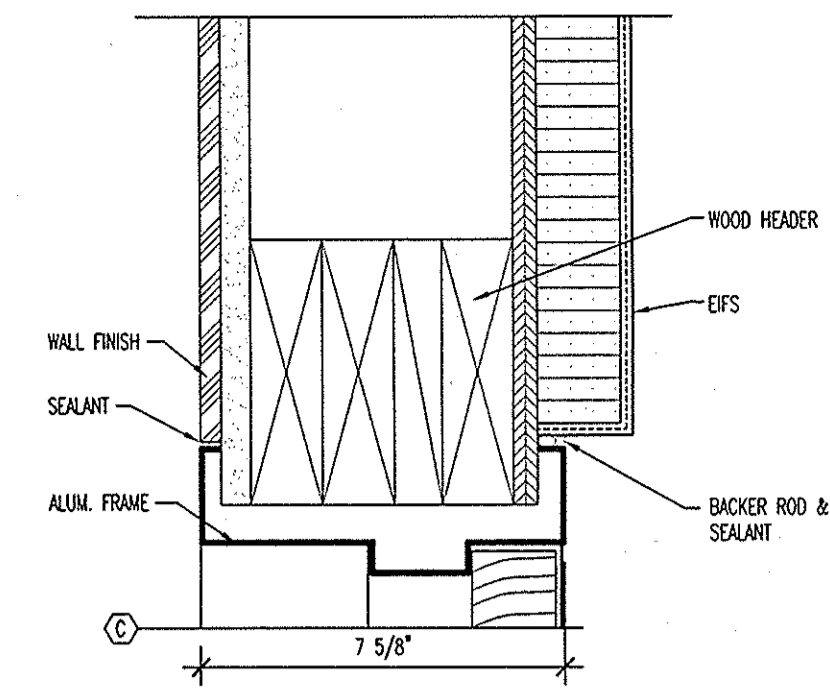
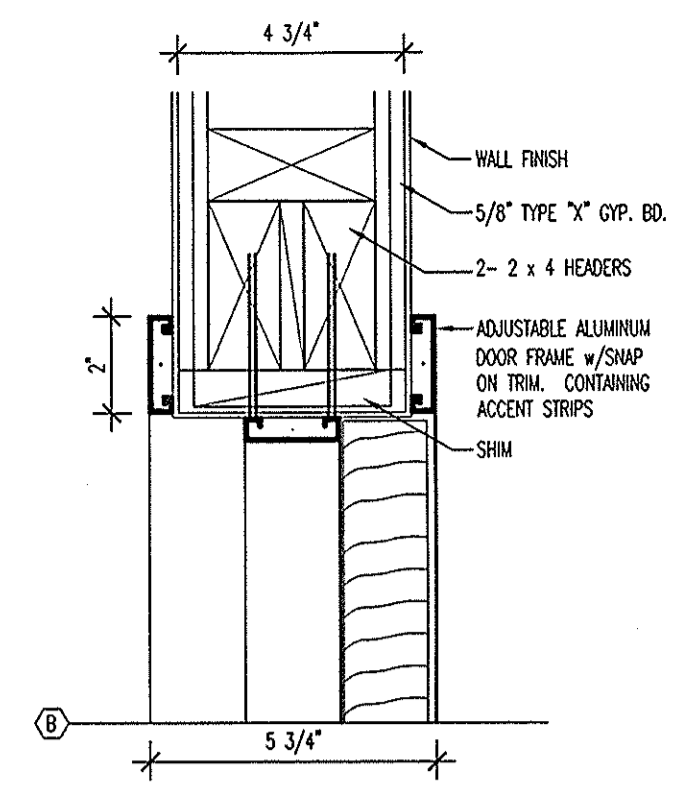
- HARDWARE SET #1** - EXISTING TO REMAIN
- HARDWARE SET #2** - DINING TO EXTERIOR
- ENTRANCE DOOR HARDWARE SHALL CONSIST OF OFFSET PIVOTS, 2 SETS ADAMS RITE M.S. 1852A DEAD BOLT LOCKS, (KEYED DIFFERENTIALLY), ONE PAIR OF FLUSH BOLTS (ON INACTIVE LEAF OF PAIRS OF DOORS), MORTISE 1805 SURFACE CLOSERS WITH BACK CHECK, STYLE "T" PULLS (EXTERIOR ONLY), AND STANDARD THRESHOLDS.
- LOCKS, CYLINDERS, AND THRESHOLDS SHALL BE OMITTED ON INTERIOR VESTIBULE DOORS.
- DUNNY CYLINDERS SHALL BE PROVIDED ON THE EXTERIOR OF ALL DOORS EXCEPT AT MAIN ENTRY.
- HARDWARE SET #3** - NOT USED-
- HARDWARE SET #4** - RESTROOM ENTRY
- ALUMINUM
**HAGER- 1-1/2" PAIR BUTT BB 1279 260
LON- 1 DOOR CLOSER #1461 ALUMINUM
HAGER- 1 DOOR PULLPLATE 4 X 16 #A33E US28
HAGER- 1 DOOR PUSHPLATE 4 X 16 #305 US28
HAGER- 1 #24F FLOOR STOP US28
HAGER- 2 KICKPLATES 8 X (2" LESS THAN THE WIDTH OF THE DOOR)
- HARDWARE SET #5** - OFFICE
- ALUMINUM
**HAGER- 1-1/2" PAIR BUTT BB 1279 260
SCHLAGE- 1 #A330P LOCKSET SW 260
HAGER- 1 #24F FLOOR STOP US28
HAGER- 2 KICKPLATES 8 X (2" LESS THAN THE WIDTH OF THE DOOR)
- HARDWARE SET #6** - KITCHEN TO DINING ROOM
- **HAGER- 1-1/2" PAIR BUTT BB 1279 260
HAGER- 1 DOOR PULLPLATE 4" X 16" #A33E US28
HAGER- 1 DOOR PUSHPLATE 4" X 16" #305 US28
SCHLAGE- 1 #6C 160 STANDARD DUTY DEADBOLT CYLINDER WITH THUMB TURN AND KEY 260
LON- 1 DOOR CLOSER #1461 ALUMINUM (VERIFY DOOR HAND)
HAGER- 1 #24F FLOOR STOP US28
HAGER- 2 KICKPLATES 8 X (2" LESS THAN THE WIDTH OF THE DOOR)
- HARDWARE SET #7** - NOT USED-
- HARDWARE SET #8** - DRIVE THRU TO EXTERIOR
- SCHLAGE 1 #6C 160 HEAVY DUTY DEADBOLT CYLINDER W/THUMB TURN 260
BBW 2 DOOR PULLPLATE 4" X 16" #47 US28 EA. SIDE
HAGER 1-1/2" PAIR BUTT BB 1279 260
LON 1 DOOR CLOSER #1460 ALUMINUM (VERIFY DOOR HAND)
BBW 2 KICKPLATES 8 X (2" LESS THAN THE WIDTH OF THE DOOR)
- HARDWARE SET #9** - NOT USED-
- NOTE:**
1. THE HARDWARE SCHEDULE IS INTENDED TO ESTABLISH A STANDARD OF QUALITY. THE CONTRACTOR/HARDWARE SUPPLIER SHALL BE RESPONSIBLE FOR FURNISHING AND INSTALLING ALL HARDWARE AND ACCESSORIES FOR A COMPLETE INSTALLATION.
2. IF MAKE/BRAND DOORS ARE USED, BUT HINGES ARE PROVIDED.
3. FURNISH 6 KEYS FOR KA SET 1.
4. FURNISH 3 KEYS EACH FOR ALL OTHER LOCKS.
5. WEATHERSTRIPPING METAL THRESHOLDS: ANCHORED TO FLOOR AND SET IN BED OF THICKOL COMPOUND.
6. EXTERIOR DOORS: PROVIDE WEATHERSTRIPPING ALL AROUND WITH SHEEP. MISCELLANEOUS: PROVIDE ALUMINUM ENTRANCE DOORS WITH WEATHERSTRIP AND SHEEP BY DOOR MANUFACTURER.



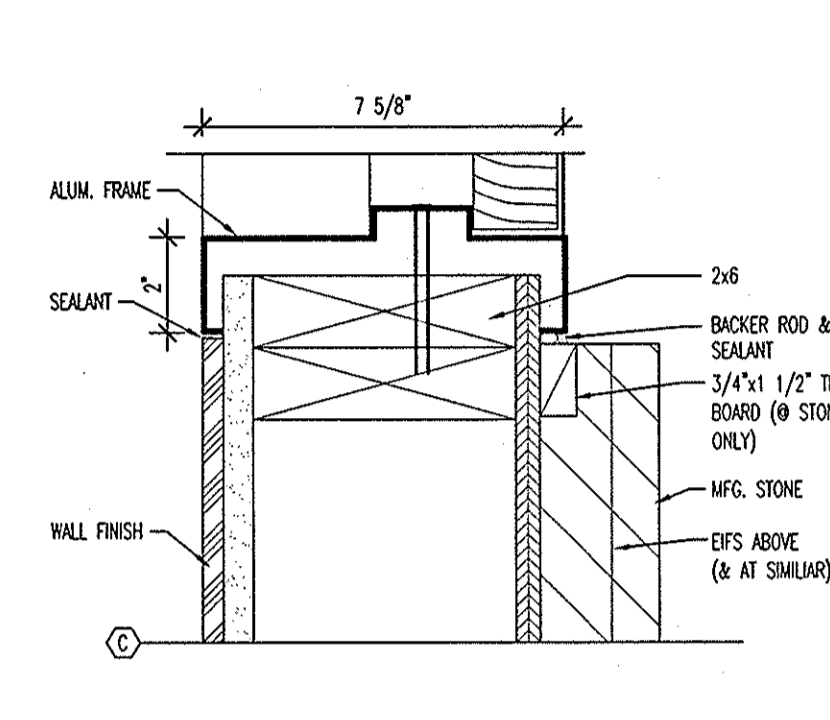
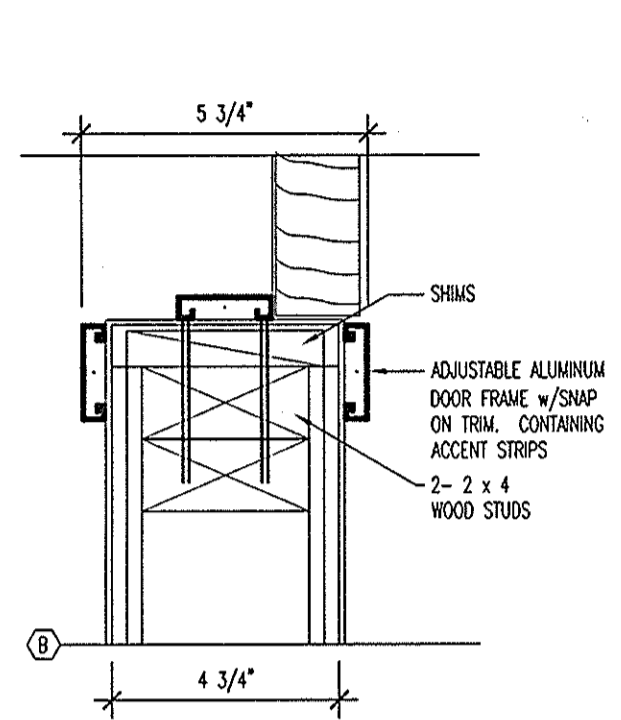
HEAD DETAILS
SCALE: 3" = 1'-0"



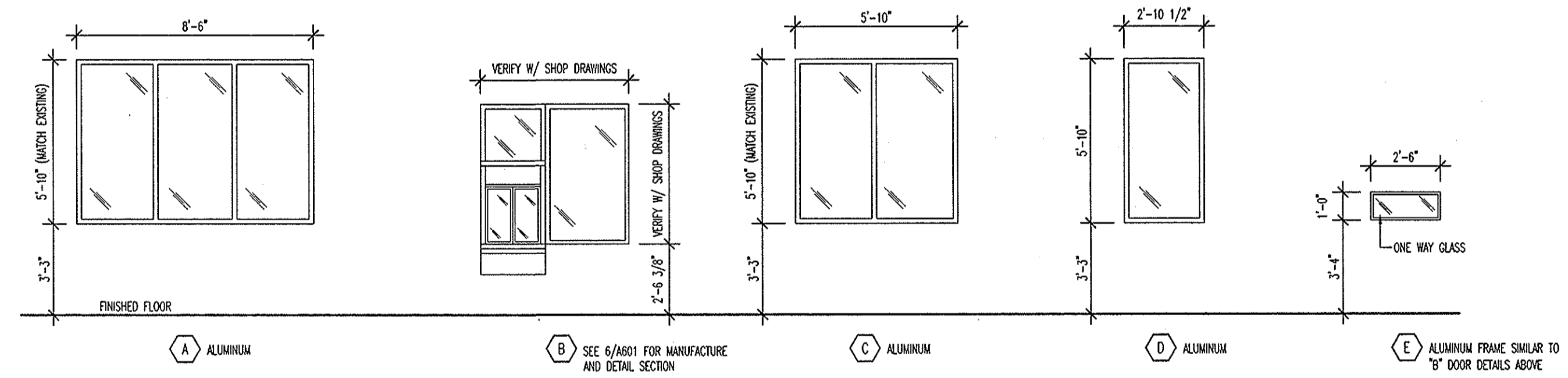
JAMB DETAILS
SCALE: 3" = 1'-0"



THRESHOLD DETAILS
SCALE: 3" = 1'-0"



1 A501 DOOR FRAME DETAILS
SCALE: 3" = 1'-0"



4 A501 WINDOW TYPES
SCALE: 1/4" = 1'-0"

NOTE: EXTERIOR ALUMINUM WINDOWS AND DOORS TO BE TUBELITE 200 SERIES W/ THERMAL BREAK CURTAIN WALL SYSTEM OR EQUAL.

DESIGNED BY: STEVE LACLUYSE
 REVIEWED BY:
 DRAWN BY: MATT SCHUSTER
 DATE: MAY 2, 2011
 JOB NUMBER: 2010-5068
 SCALE: NONE
 X-1710-A501

WIGHTMAN PETRIE
 SURVEYING ENGINEERING ENVIRONMENTAL LANDSCAPE ARCHITECTURE
 417 South Lafayette Blvd South Bend, IN 46601 p: 574.232.4388 f: 574.232.4333

Burger King Restaurant
 Kentwood, Michigan
 BRAVOKILO, INC.
 Mishawaka, Indiana
 4220 Edison Lakes Parkway
 DOOR SCHEDULE AND DETAILS