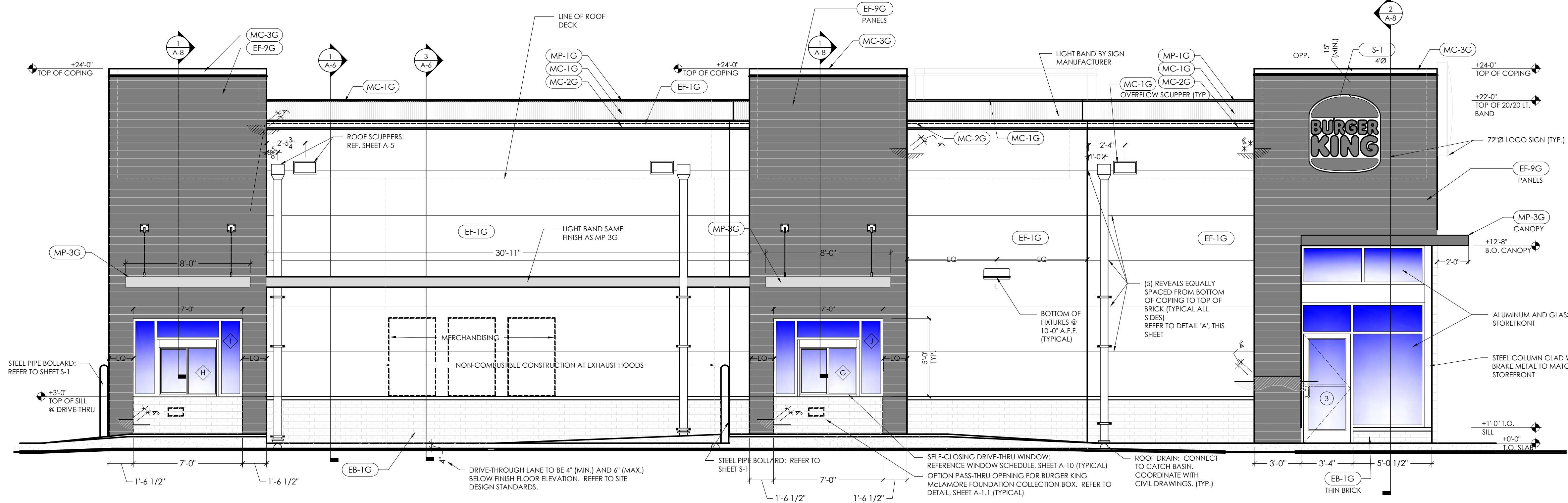
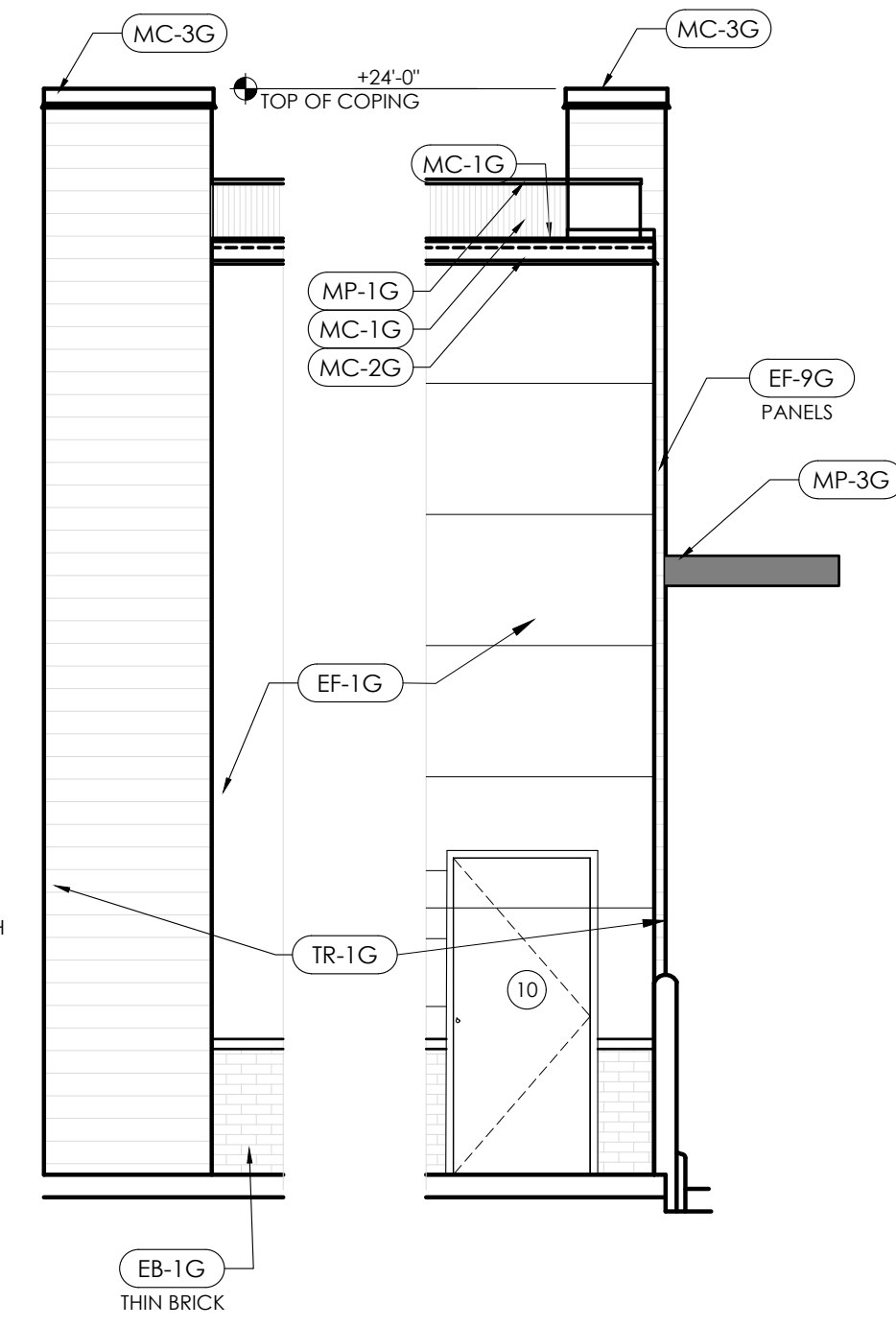


1 MAIN ENTRANCE ELEVATION
SCALE: 1/4" = 1'-0"



2 DRIVE THROUGH ELEVATION
SCALE: 1/4" = 1'-0"



5 DRIVE THROUGH SIDE ELEVATION
SCALE: 1/4" = 1'-0"

6 DRIVE THROUGH SIDE ELEVATION
SCALE: 1/4" = 1'-0"

Notes	FOR SUBMITTAL TO CITY PLANNING
By	DB
Date	
No.	
Drawn By:	CP
Checked:	SB
Scale:	AS NOTED
Date:	---21



PROJECT
BURGER KING
1440 NAPPANEE ST.
ELKHART, IN 46514

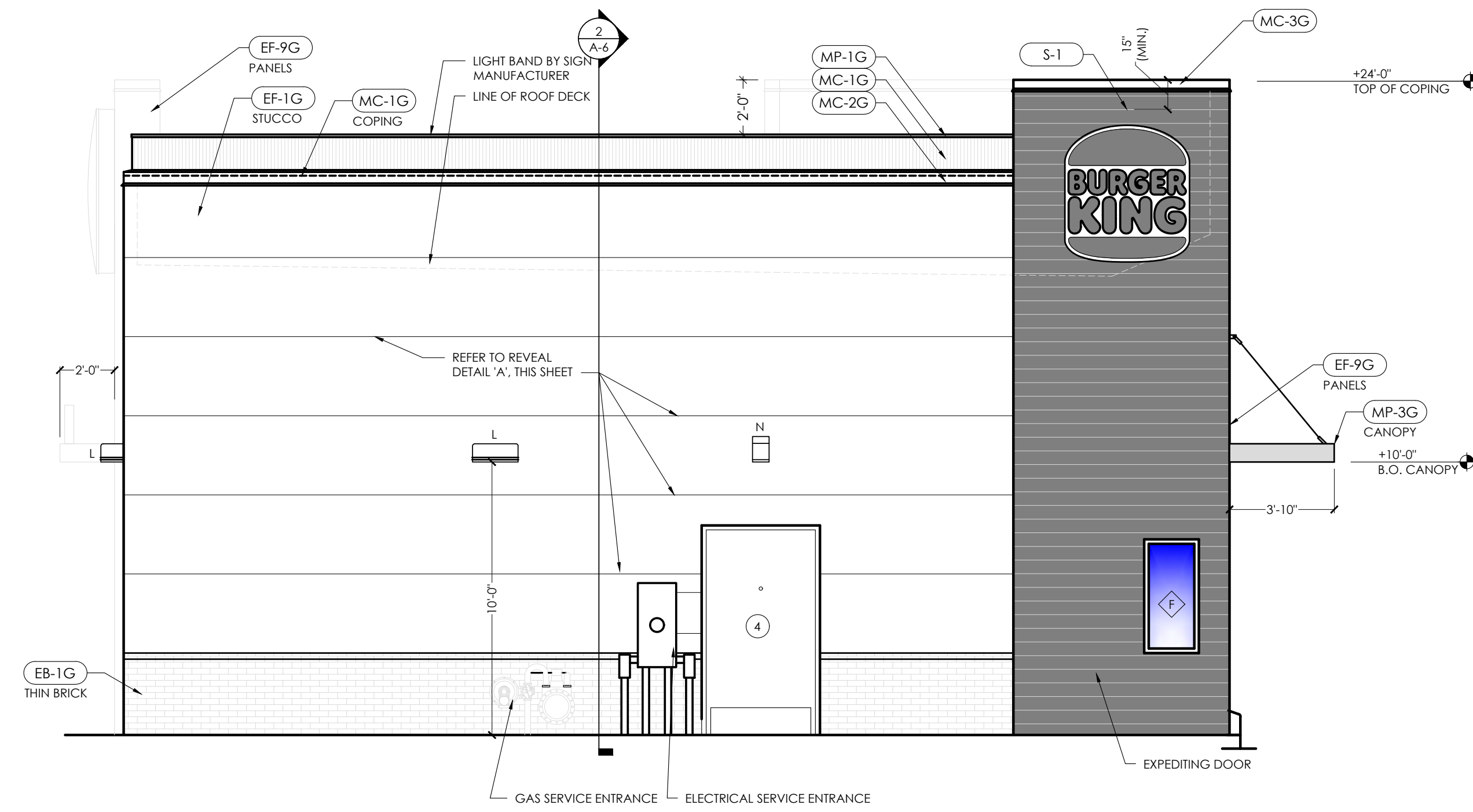
SHEET TITLE
EXTERIOR ELEVATIONS

DO NOT SCALE THIS PRINT. USE FIGURED DIMENSIONS ONLY.

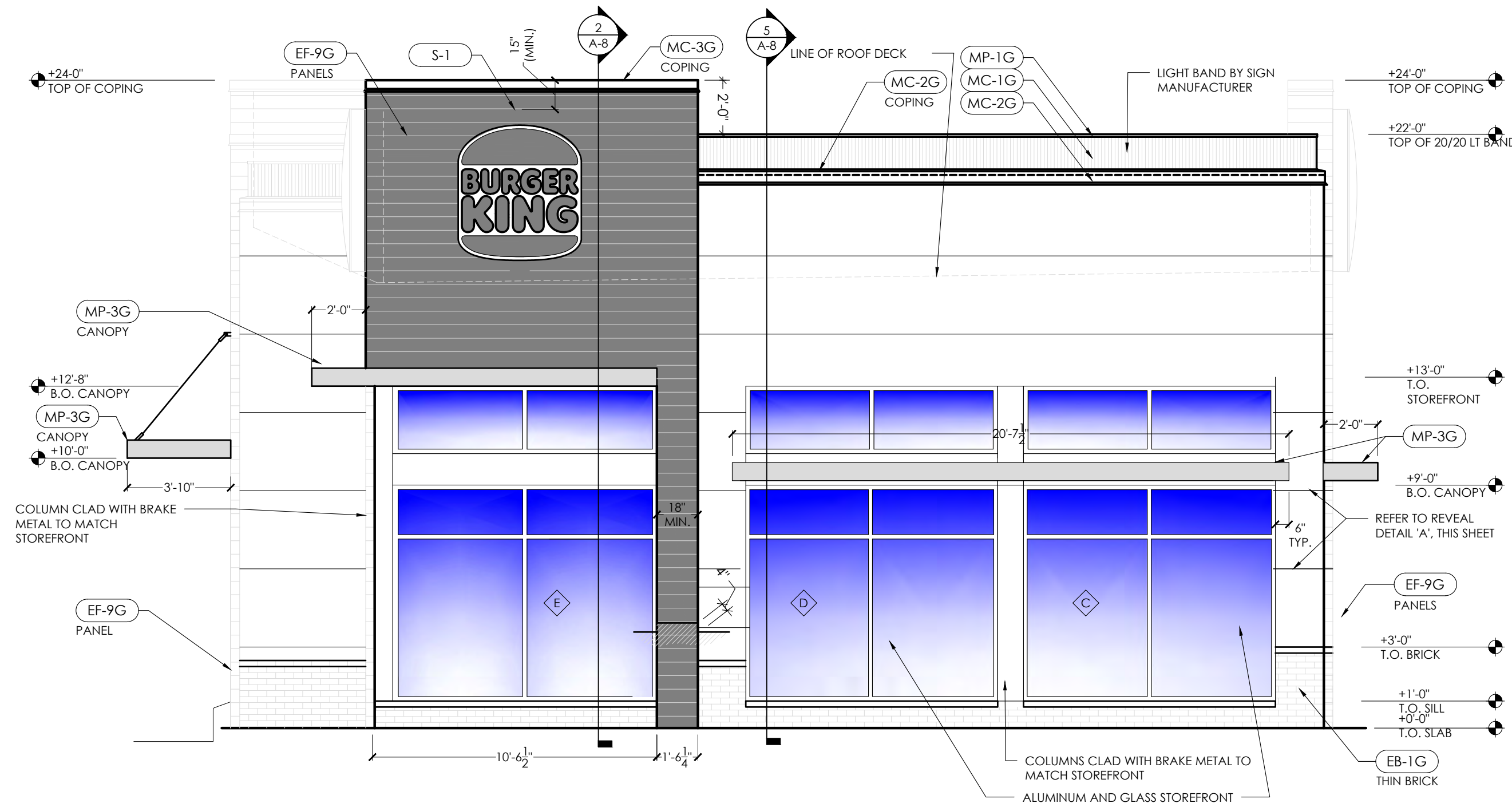
JOB #
TG-21668

SHEET
A-2

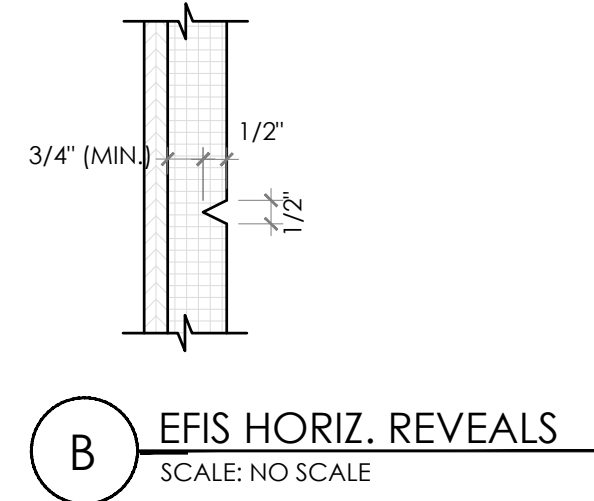
ALL RIGHTS RESERVED. NO PART OF THESE DRAWINGS OR SPECIFICATIONS MAY BE REPRODUCED OR TRANSMITTED IN ANY FORM OR BY ANY MEANS, ELECTRONIC OR MECHANICAL, WITHOUT PRIOR WRITTEN AUTHORIZATION FROM THE ARCHITECT.



4 REAR ELEVATION
SCALE: 1/4" = 1'-0"



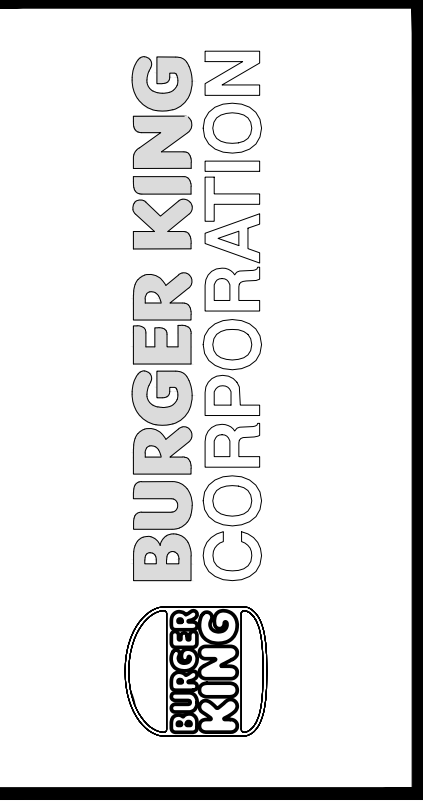
3 FRONT ELEVATION
SCALE: 1/4" = 1'-0"



No.	Date	By	Notes
1		DB	FOR SUBMITTAL TO CITY PLANNING

Drawn By: CP
Checked: 58
Scale: AS NOTED
Date: --,--21

ALL RIGHTS RESERVED. NO PART OF THESE DRAWINGS OR SPECIFICATIONS MAY BE REPRODUCED OR TRANSMITTED IN ANY FORM OR BY ANY MEANS, ELECTRONIC OR MECHANICAL, WITHOUT PRIOR WRITTEN AUTHORIZATION FROM THE ARCHITECT.



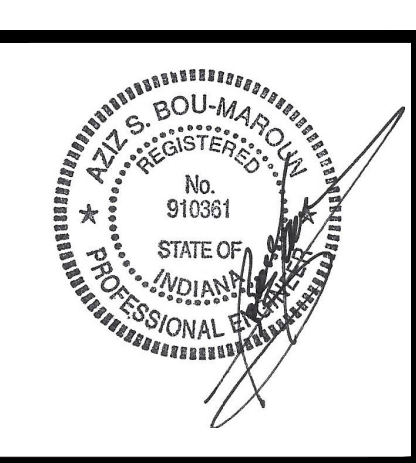
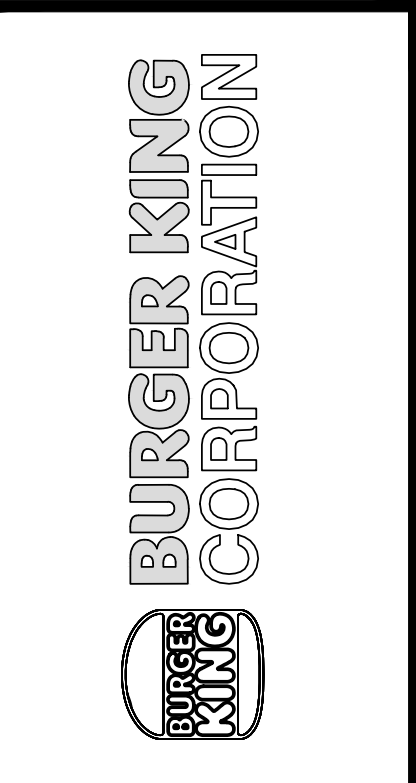
PROJECT BURGER KING 1440 NAPPAWEE ST. ELCHART, IN 46514	SHEET TITLE EXTERIOR ELEVATIONS
DO NOT SCALE THIS PRINT. USE FIGURED DIMENSIONS ONLY.	
JOB #	TG-21668
SHEET	A-2.1

Burger King - 20/20 Garden Grill Exterior							
EXTERIOR MATERIALS & FINISH SCHEDULE (not all specs are used on every project)							
02/05/21							
CODE	MATERIAL	LOCATION	MANUFACTURER	PRODUCT	DESCRIPTION	ADDITIONAL INFORMATION	
					COLOR	DIMENSION	
EB-1G	EXTERIOR BRICK	GENERAL		EVOLUTION BRICK	MOD / QS TUMBLED (FULL BRICK)	OLDE HILLSBORO	
					(THIN BRICK)	SIERRA TUMBLED	
					PINE HALL BRICK	FACE BRICK	OLD IRVINGTON O/S
			H.C. MUDDOX BRICK	THIN BRICK	BK WEST COAST BLEND		
EB-1AG (ALTERNATE FOR EB-1G)	EXTERIOR FINISH FIBER CEMENT BRICK PANELS	GENERAL	NICHIHA FIBER CEMENT	NICHIHA CANYON BRICK PANELS	"SHALE BROWN" - STAGGERED JOINTS - UNPAINTED IF NO OTHER BRICK IS PRESENT. (ON REMODELS, IF THERE IS ANY EXISTING BRICK ON THE BUILDING, THE EXISTING BRICK AND THE NICHIHA BRICK MUST BE PAINTED TO MATCH EP-4G)	18" X 6"	
ECT-1G	EXTERIOR CERAMIC TILE	ACCENT AT BUILDING FRONT	GRANTI GIANDRE / EUROWEST	SENSIBLE STONE ED5052	"RED NATURAL" STACKED BOND PATTERN	12" X 24"	
ECT-18G	EXTERIOR CERAMIC TILE	INLINE RESTAURANTS ONLY	GRANTI GIANDRE / EUROWEST	ROVERE ANTICO LEGNI HIGH TECH	PAR 15334 "ROVERE" STACKED BOND PATTERN	6" X 36"	
EF-1G	EXTERIOR FINISH - STUCCO, STO, FIBER CEMENT SIDING PANELS	GENERAL	STO OR APPROVED EQUAL	STO POWERWALL STUCCO SYSTEM TEXTURE: FINE SAND OR STO THERM CL EIFS SYSTEM	COLOR TO MATCH EP-2G PPG "DESERT DUNE"		
			NICHIHA FIBER CEMENT	NICHIHA TUFFBLOCK	PREPAINTED TO MATCH EP-2G - PPG "DESERT DUNE" STACKED BOND PATTERN	18" X 6"	
EF-4G	EXTERIOR FINISH STUCCO	GENERAL	STO OR APPROVED EQUAL	STO POWERWALL STUCCO SYSTEM	COLOR TO MATCH EP-4G PPG "GRANITE"		
EF-8G (ALTERNATE FOR EF-9G)	EXTERIOR FINISH STONE	EXTERIOR SIGN ARCHONS	BORAL STONE PRODUCTS	COUNTRY LEDGESTONE	"ASPEN"		
EF-9G	EXTERIOR FINISH FIBER CEMENT	EXTERIOR SIGN ARCHONS	NICHIHA FIBER CEMENT	VINTAGE WOOD EF762	"CEDAR"	18" X 10"	
TR-1G	ALUMINUM TRIMS						
EC-1G	EXTERIOR CAULK		ADSEAL PRODUCTS	ADSEAL 458-63	"VINTAGE WOOD CEDAR"		
EP-2G	EXTERIOR PAINT	EXTERIOR GENERAL	PPG	PRIMER: 17-921 PAINT: 6-2045XI	"DESERT DUNE" 1023-4, former "TANNERS TAUPE" PPG1023-4		
EP-4G	EXTERIOR PAINT	EXTERIOR WAINSCOT		PRIMER: 17-921 PAINT: 6-2045XI	"GRANITE" 1022-6, former "MONTERREY CLIFFS" 10Y 14/080		
EP-6G	EXTERIOR PAINT	LOGO SIGN CABINETS & BURGER KING CHANNEL LETTER CABINETS		PRIMER: 6-212 PAINT: 6-230	"STEPPING STONE" 1010-4, former "BURGER KING SILVER" Custom Formula		NOTE: FOR REMODELS ONLY NOT FOR USE ON ROOFS. SEE EP-6AG & EP-6BG
EP-6AG	EXTERIOR PAINT	EXISTING MANSARD ROOFS, SHINGLES & BARREL TILE		PRIMER: 17-921 PAINT: 90-1110	"DOVER GRAY" 1001-1, former "GRYMMYS GREY" 00NH 20/000		NOTE: BY EXCEPTION FOR REMODELS ONLY
EP-6BG	EXTERIOR PAINT	EXISTING STANDING SEAM METAL ROOF		PRIMER: 90-712 PAINT: 90-1110	"GRAY STONE" 1009-4, former "MARCH WIND" Custom Formula		NOTE: BY EXCEPTION FOR REMODELS ONLY
EP-8BG	EXTERIOR PAINT	METAL COPING AT ARCHON TOWERS		PRIMER: 17-921 PAINT: 6-2045XI	"CARAVEL BROWN" 1079-6, former "CEDAR" Custom Formula		
EXT-1G	EXTERIOR PAINT	POLES & POLE SIGN		PRIMER: 90-712 PAINT: 90-353	"BLACK"		
EXT-2G	EXTERIOR PAINT	SIGNS		PRIMER: 90-712 PAINT: 90-375	Tint to match PPG 1006-6 "DECONSTRUCTION" "TAUPE TONE" SW 7633		Contact: GLENN REMLER, ARCHITECTURAL ACCOUNT EXECUTIVE phone: (954) 547-1217 email: Glenn.J.Remler@Sherwin.com
EP-2G	EXTERIOR PAINT	EXTERIOR GENERAL		PRIMER: Loxon Concrete & Masonry A24W300 PAINT: Superpaint Ext Satin A89 Series Satin	"HOMESTEAD BROWN" SW 7515		
EP-4G	EXTERIOR PAINT	EXTERIOR WAINSCOT		PRIMER: Loxon Concrete & Masonry A24W300 PAINT: Superpaint Ext Satin A89 Series Satin	FACTORY FINISH SILVER		NOTE: FOR REMODELS ONLY NOT FOR USE ON ROOFS.
EP-6G	EXTERIOR PAINT	LOGO SIGN CABINETS & BURGER KING CHANNEL LETTER CABINETS		PRIMER: Kem Bond HS B50A28 PAINT: Silver Brite B59S11	"WESTCHESTER GRAY" SW 2849		NOTE: BY EXCEPTION FOR REMODELS ONLY
EP-6AG	EXTERIOR PAINT	EXISTING MANSARD ROOFS, SHINGLES & BARREL TILE		PRIMER: Pro Industrial Pro-Cryl Primer B66-310 PAINT: Pro Industrial High Performance Acrylic B66-660 Eggshell	"MARCH WIND" Custom Formula		NOTE: BY EXCEPTION FOR REMODELS ONLY
EP-6BG	EXTERIOR PAINT	EXISTING STANDING SEAM METAL ROOF		PRIMER: Pro Industrial Pro-Cryl Primer B66-310 PAINT: Pro Industrial High Performance Acrylic B66-660 Eggshell	"CEDAR" Custom Formula		
EP-8G	EXTERIOR PAINT	METAL COPING AT ARCHON TOWERS		PRIMER: Pro Industrial Pro-Cryl Primer B66-310 PAINT: Pro Industrial High Performance Acrylic B66-650 Semi-Gloss	FACTORY FINISH BLACK		
EXT-1G	EXTERIOR PAINT	POLES & POLE SIGN	PRIMER: Pro Industrial Pro-Cryl Primer B66-310 PAINT: Pro Industrial High Performance Acrylic B66-600 Gloss	FACTORY FINISH TO MATCH SW 6075 "GARRET GRAY"			
EXT-2G	EXTERIOR PAINT	SIGNS	PRIMER: Pro Industrial Pro-Cryl Primer B66-310 PAINT: Pro Industrial High Performance Acrylic B66-600 Gloss				
EGR-3G	GROUT	BRICK	MAPEI		#5 "CHAMOIS"	NOTE: USE WITH EB-1G	
EGR-4G	GROUT	CERAMIC TILE	CUSTOM BUILDING PRODUCTS	POLYBLEND SANDED	#335 "WINTER GRAY"	NOTE: USE WITH ECT-1G *** FOR SETTING MATERIALS USE COMPLETE CONTACT RAPID SET *** SEAL GROUT WITH AQUAMIX SEALERS CHOICE GOLD	
EGR-9G	GROUT	INLINE RESTAURANTS ONLY CERAMIC TILE	LATICRETE	POLYBLEND SANDED	#66 "CHESTNUT BROWN"	NOTE: USE WITH ECT-18G *** CONTRACTOR TO ALLOW 1/16" MAX FOR GROUT JOINT *** FOR SETTING MATERIALS USE COMPLETE CONTACT RAPID SET *** SEAL GROUT WITH AQUAMIX SEALERS CHOICE GOLD Contact: Kirby Davis at Laticrete (203) 671-7210	
MC-1G	METAL COPING	TOP OF LIGHT BAND WALL CAP	W.P. HICKMAN SYSTEMS, INC.	PERMA SNAP PLUS	A-30 "SILVERSMITH"	CONTACT: W.P. HICKMAN COMPANY (828)676-1700 - WWW.WPH.COM	
MC-2G	METAL COPING	BELOW LIGHT BAND		PERMA SNAP PLUS	FACTORY FINISH TO MATCH EP-2G PPG "TANNERS TAUPE"		
MC-3G	METAL COPING	TOP OF ARCHON		PERMA SNAP PLUS	TO BE PAINTED TO MATCH EP-8G PPG "CEDAR"		
MP-1G	METAL COPING	PARAPET LIGHT BAND	LEKTRON *SEE APPROVED SIGN SUPPLIERS	LED LIGHT BAND		*SEE PLANS	
MP-3G	METAL CANOPY	ABOVE DOORS AND WINDOWS	*SEE APPROVED CANOPY SUPPLIERS	CUSTOM METAL CANOPY	COLOR: CLEAR ANODIZED	*SEE PLANS	

NO.	DATE	BY	NOTES
1		DB	FOR SUBMITTAL TO CITY PLANNING
2			
3			
4			
5			
6			
7			
8			
9			
10			

Drawn By: cp
Checked: SB
Scale: AS NOTED
Date: --/--/21

ALL RIGHTS RESERVED. NO PART OF THESE DRAWINGS OR SPECIFICATIONS MAY BE REPRODUCED OR TRANSMITTED IN ANY FORM OR BY ANY MEANS, WITHOUT THE SPECIFIC WRITTEN AUTHORIZATION FROM THE ARCHITECT.



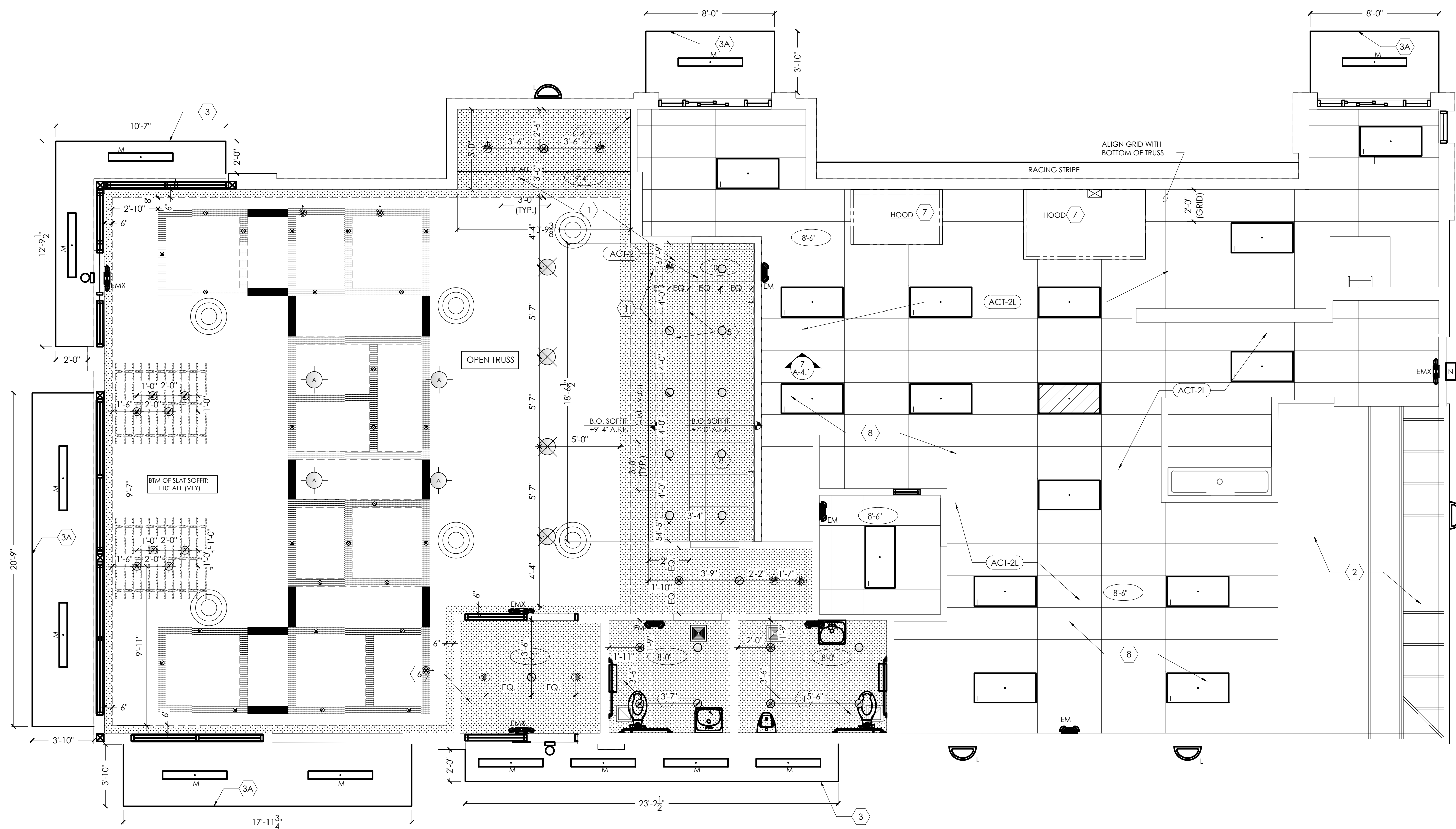
PROJECT: BURGER KING 4400 WAPPAWAMIST, ELICHAHT, IN 46514

SHEET TITLE: EXTERIOR FINISH SCHEDULE

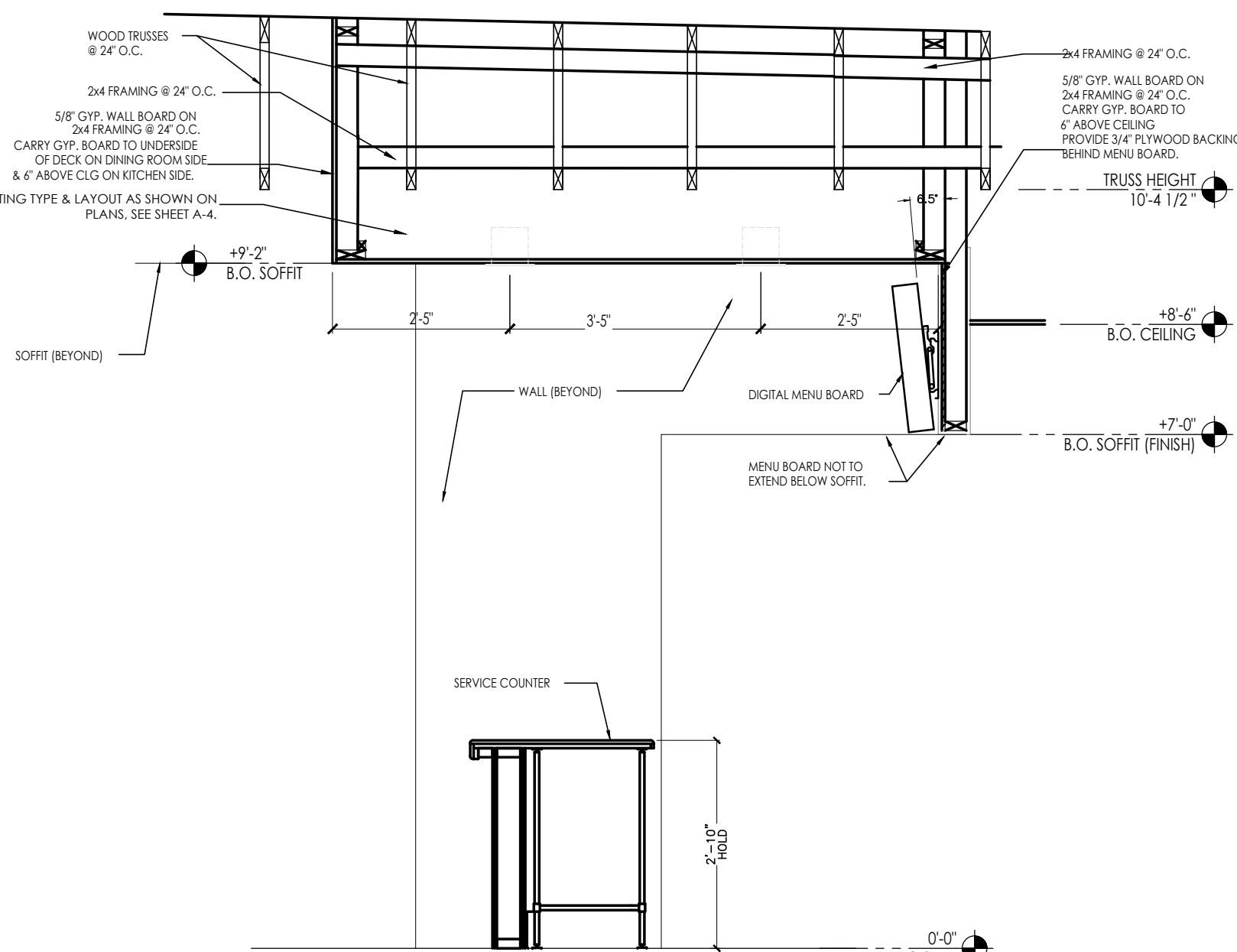
DO NOT SCALE THIS PRINT. USE FIGURED DIMENSIONS ONLY.

JOB # TG-21668

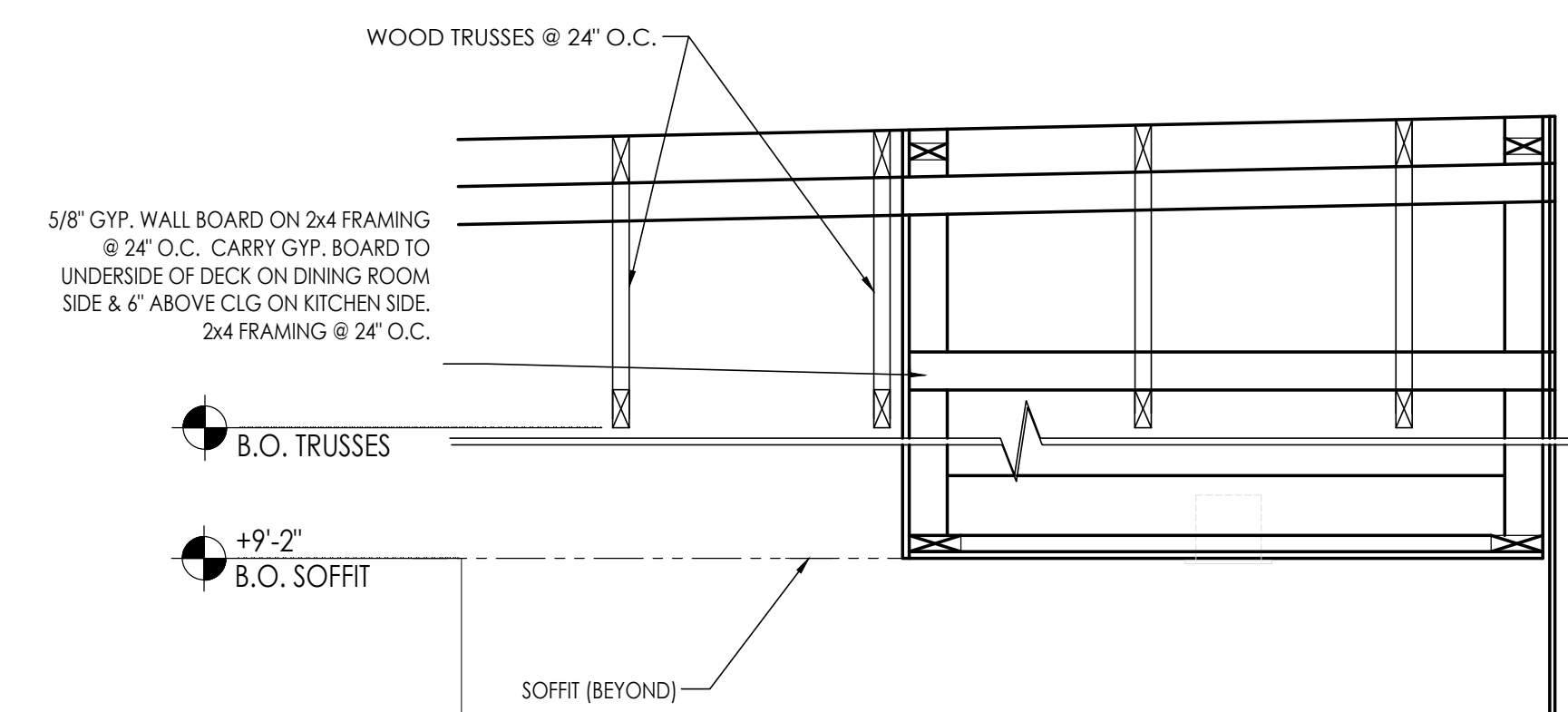
SHEET A-2.2



1 REFLECTED CEILING PLAN
SCALE: 1/4" = 1'-0"



2 FRONT COUNTER SOFFIT DETAIL
SCALE: 1/2" = 1'-0"



3 DRINK STATION SOFFIT DETAIL
SCALE: 1/2" = 1'-0"

NOTE:
DINING ROOMS ARE DESIGNED TO A 35 - 40 FOOT-CANDLE LEVEL.
KITCHENS ARE DESIGNED TO 50 FOOT-CANDLE LEVEL.
RESTROOMS ARE DESIGNED TO 50 FOOT-CANDLE. FOR
ADDITIONAL INFORMATION ON LIGHTING REQUIREMENTS REFER
TO BURGER KING LIGHTING STANDARDS POSTED @
DESIGNWITHBK.COM/COMMON DOCUMENTS.

CEILING SPECIFICATIONS	
ACT-1G LOCATION: MANUFACTURER: COLOR: GRID: DIMENSION: CONTACT:	CORTEGA #770 DINING ARMSTRONG SEPIA 2X2 ANGLED TEGULAR 15/16 IN SEPIA 2'X2'X3/4" LOUIS J. JOHN-NIL ACCOUNTS MANAGER (407) 697-6768 LJJOHN@ARMSTRONG.COM
ACT-2G LOCATION: MANUFACTURER: COLOR: GRID: DIMENSION: CONTACT:	KITECHENZONE #BP672 SERVICE AISLE/BACK OF HOUSE ARMSTRONG WHITE PRELUDE 15/16" EXPOSED TEE GRID IN WHITE 2'X4'X1/2" (BOH) 2'X2'X1/2" (SERVICE ISLE) ARMSTRONG STRATEGIC ACCOUNTS (800.442.4212)
P-3G LOCATION: MANUFACTURER: PRIMER: COLOR:	FACE OF SOFFIT PPG 101Y 30/106 EGG SHELL PPG 6-2 STONESMITH
P-5G LOCATION: MANUFACTURER: COLOR:	GYP. CEILINGS CORRIDOR SOFFIT AND RESTROOMS PPG 6-441 EGG SHELL WHITE ON WHITE
P-4G LOCATION: MANUFACTURER: PRIMER: COLOR:	GYP. CEILINGS OPEN CEILING PPG 6-417 SPEEDHIDE ZERO INT. VOC LATEX EGG SHELL CABIN FEVER
P-15G LOCATION: MANUFACTURER: PRIMER: COLOR:	MAIN WALLS AND SOFFITS PPG 6-411 PPG 6-2 ASHEN PPG 1023-3
SL-1G LOCATION: MANUFACTURER: PRODUCT: COLOR: CONTACT:	TRELLIS SOFFIT DINING ROOM TRELLIS OMINOVA SOLUTIONS SURF(M) 3D LAMINATES ON SUNTRAIT ALMOND CHERRY DUSTIN SMITH (314) 489-2374 DUSTIN.SMITH@OMNOVA.COM

GENERAL NOTES:

- A. ALL DIMENSIONS SHOWN ON REFLECTED CEILING PLAN ARE FROM FACE OF WALL FINISH UNLESS NOTED OTHERWISE.
- B. THE REFERENCE HEIGHTS INDICATED ON PLAN ARE FROM FINISH FLOOR (F.F.)
- C. GENERAL CONTRACTOR TO COORDINATE DINING ROOM LIGHTING WITH APPROVED INTERIOR DECOR DRAWINGS.
- D. CONTRACTOR SHALL VERIFY FIXTURE QUANTITIES AND ALSO MAKE PROPER ADJUSTMENTS FOR ANY CHANGES IN PLAN DUE TO ADDITIONAL REQUIREMENTS, LOCAL CODES, ETC.
- E. FOR H.V.A.C. PLAN, SECTIONS, DUCT LOCATIONS, SUPPLY AND RETURN GRILLE SIZES AND ADDITIONAL INFORMATION, REFERENCE SHEET M-1.
- F. ALL FIXTURES SHALL BE LOCATED IN THE CENTER OF CEILING TILES UNLESS NOTED OTHERWISE.
- G. REFERENCE SHEET E-1 FOR LIGHTING LAYOUT REQUIREMENTS AND ADDITIONAL INFORMATION. REFERENCE INTERIOR DECOR SHEETS FOR FINISH SPECIFICATIONS.
- H. CONTRACTOR TO COORDINATE PENDANT LIGHT LOCATIONS WITH DECOR SUPPLIER DRAWINGS.

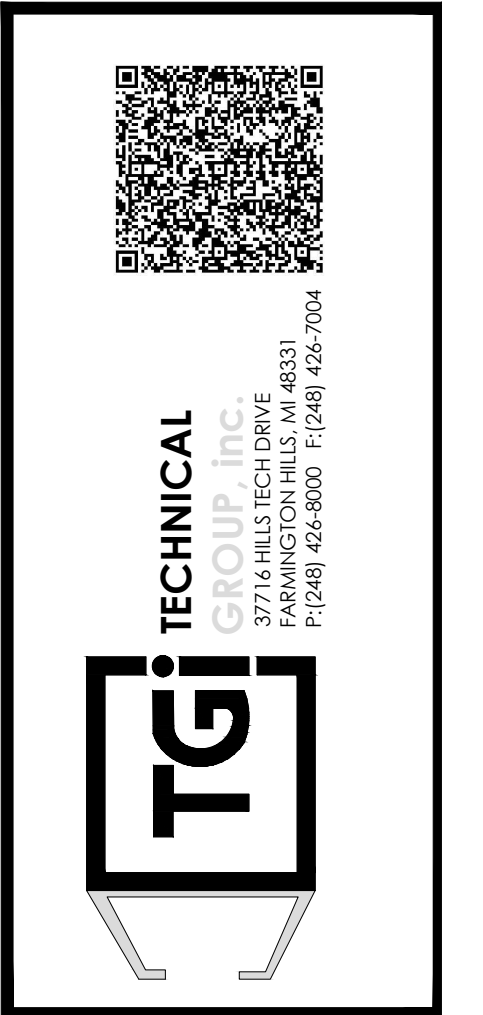
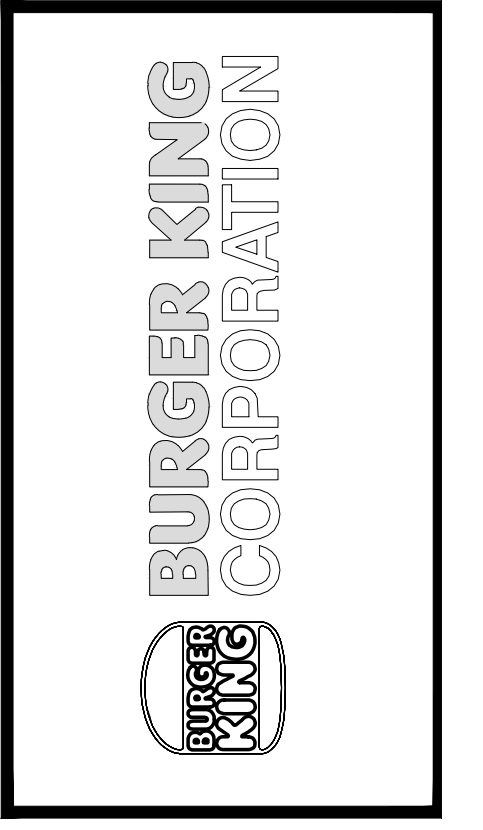
KEYED NOTES:

- 1 GYPSUM BOARD CEILING/SOFFIT
- 2 EXPOSED TRUSSES ABOVE WALK-IN BOX. REFER TO W.B. DRAWINGS FOR INTERIOR LIGHT FIXTURES
- 3 PREFABRICATED METAL CANOPY
- 4 STAINLESS STEEL SERVICE CHASE
- 5 MENU BOARD AND HEADER. REFERENCE DTL 7/A-4.1
- 6 SOFFIT ABOVE ENTRY.
-CEILING PAINT TO MATCH INTERIOR CEILING IF VESTIBULE IS ENCLOSED.
-CEILING PAINT TO BE EP-2G IF VESTIBULE IS OPEN. [REFER TO EXTERIOR FINISH SCHEDULE]
- 7 MECHANICAL EXHAUST HOOD ABOVE
- 8 SUSPENDED ACOUSTICAL TILE CEILING. REFER TO FINISH SCHEDULE.
- 9 EXPOSED WOOD TRUSSES TO BE PAINTED. REFER TO ID SHEETS FOR COLOR.
- 10 EXPOSED PLYWOOD ROOF DECK SHEATHING REFER TO ID SHEETS FOR COLOR.

SYMBOLS LEGEND

SYMBOL	DESCRIPTION
	SUPPLY AIR DIFFUSERS
	RETURN AIR GRILLES
	EXHAUST FAN GRILLES
A	SINGLE PENDANT. COORDINATE LOCATION AND QUANTITY WITH DECOR SUPPLIER.
B	SINGLE PENDANT. COORDINATE LOCATION AND QUANTITY WITH DECOR SUPPLIER.
C6w	6" DIAMETER RECESSED DOWNLIGHT
D6w	6" DIAMETER ADJUSTABLE WALL WASH DOWNLIGHT
E	ADJUSTABLE TRACK LIGHT
F	PROFILE LIGHT
G	2" DIAMETER DOWNLIGHT
G1	2" DIAMETER WALL WASH DOWNLIGHT
I	2x4 RECESSED FLAT LENS (NIGHT LIGHT WHEN SHOWN HATCHED)
K	12x12 RECESSED SOFFIT LIGHT
L	SURFACE MOUNTED EXTERIOR WALL SCONCE (ALSO USED IN OPEN CANOPIES)
M	WET LISTED 4'-0" CANOPY LIGHT (USED UNDER AWNINGS AND CLOSED CANOPIES)
N	WALL MOUNTED SECURITY LIGHT
EM	EMERGENCY LIGHT
EMX	EXIT LIGHT

Notes	FOR SUBMITTAL TO CITY PLANNING
By	DB
Date	
No.	1
Drawn By:	CP
Checked:	SB
Scale:	AS NOTED
Date:	--:--21



PROJECT	BURGER KING 1440 WAPPANEE ST. ELMHART, IN 46514
SHEET TITLE	REFLECTED CEILING PLAN
JOB #	TG-21668
SHEET	A-4

DO NOT SCALE THIS PRINT. USE FIGURED DIMENSIONS ONLY.