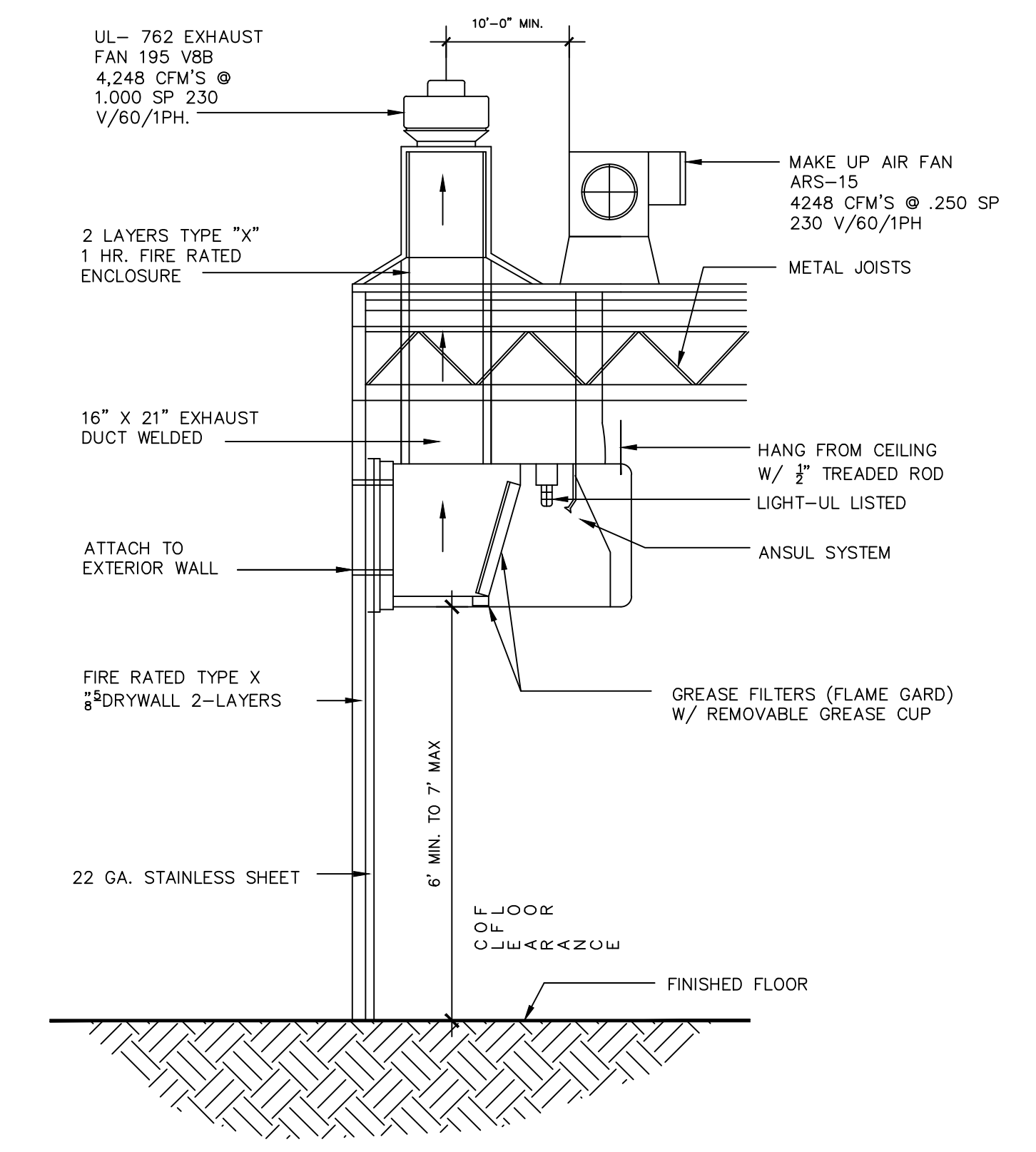
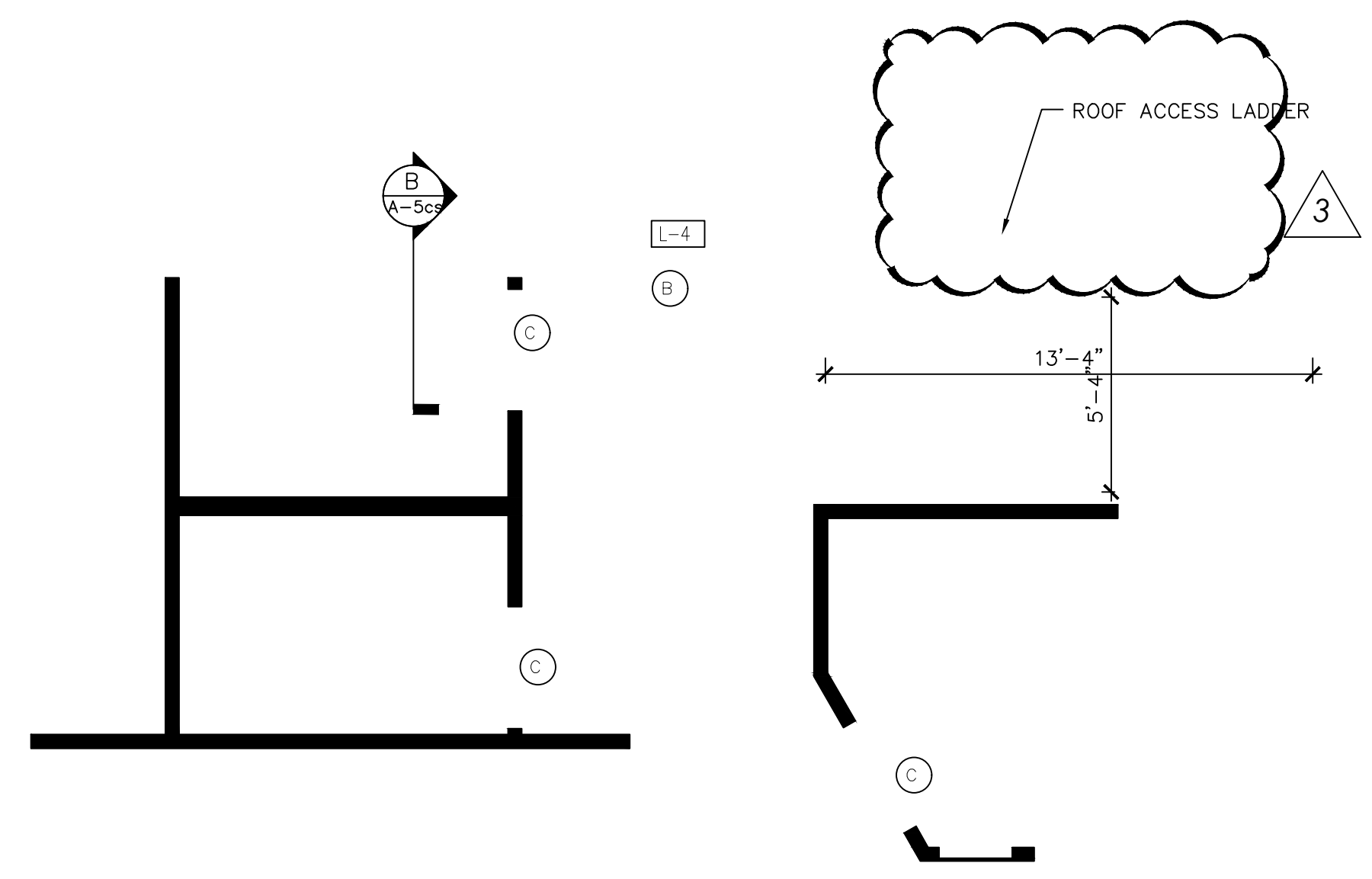
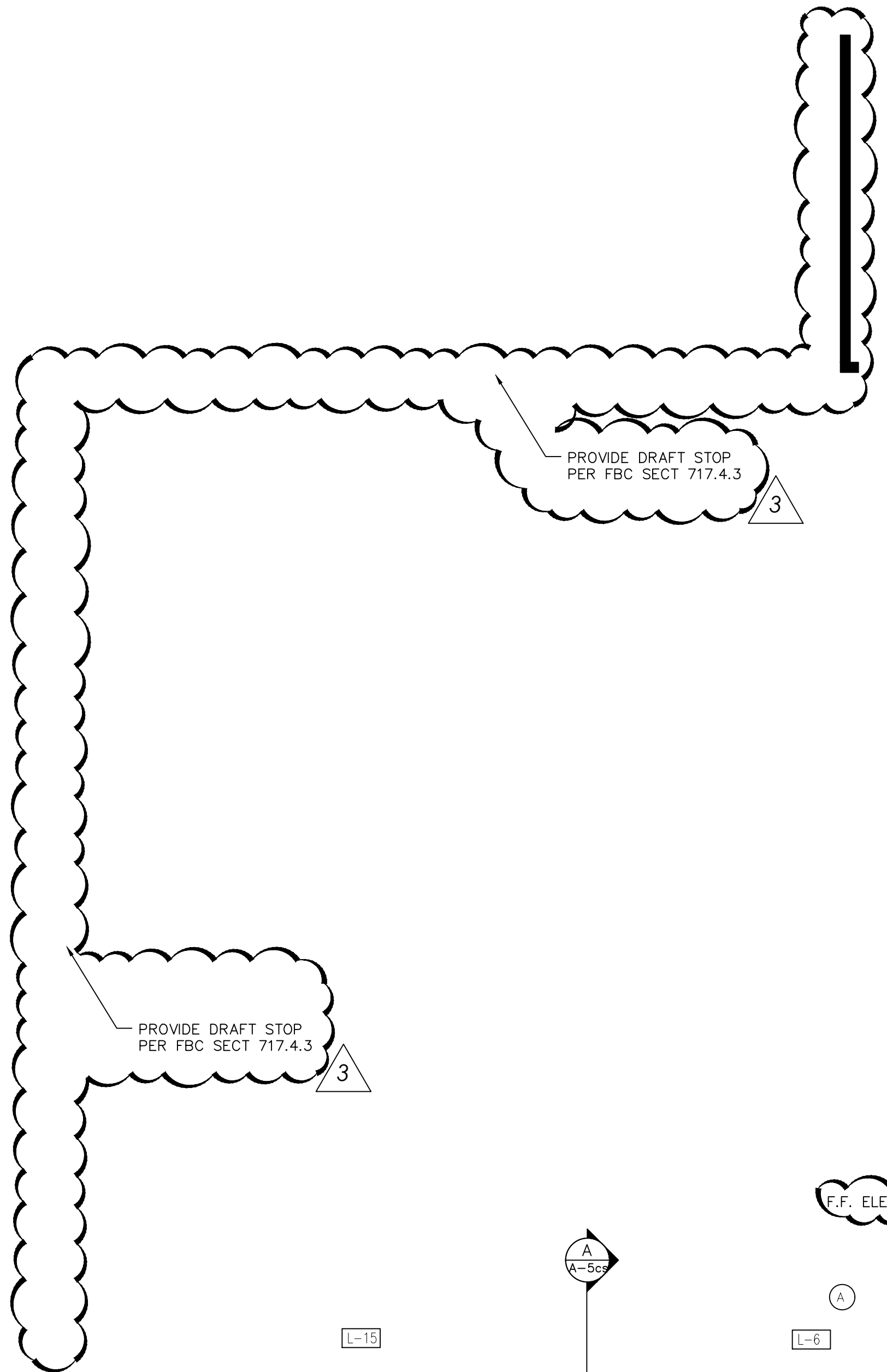
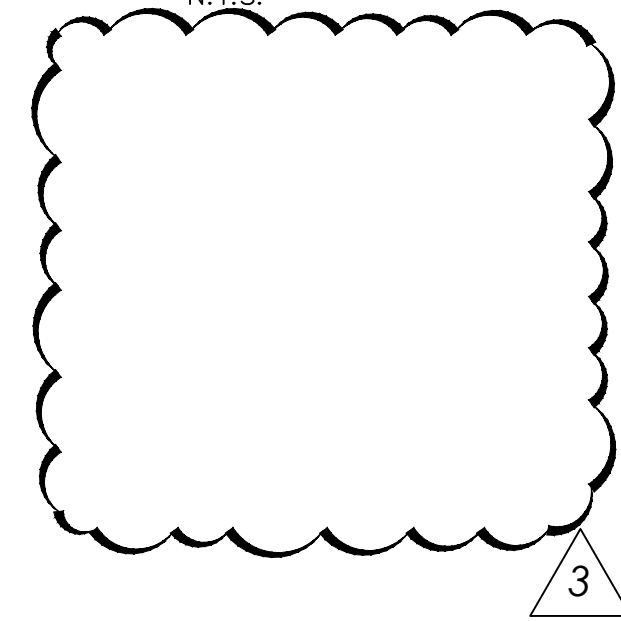


L-4  
B

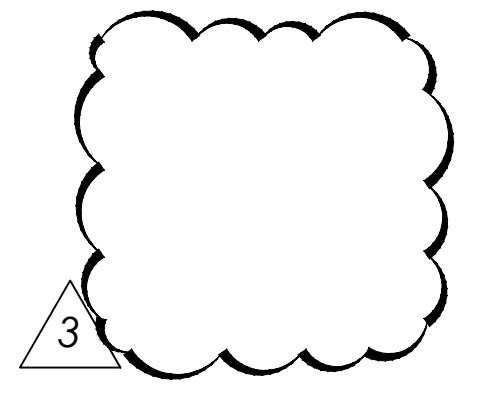


HOOD DETAIL



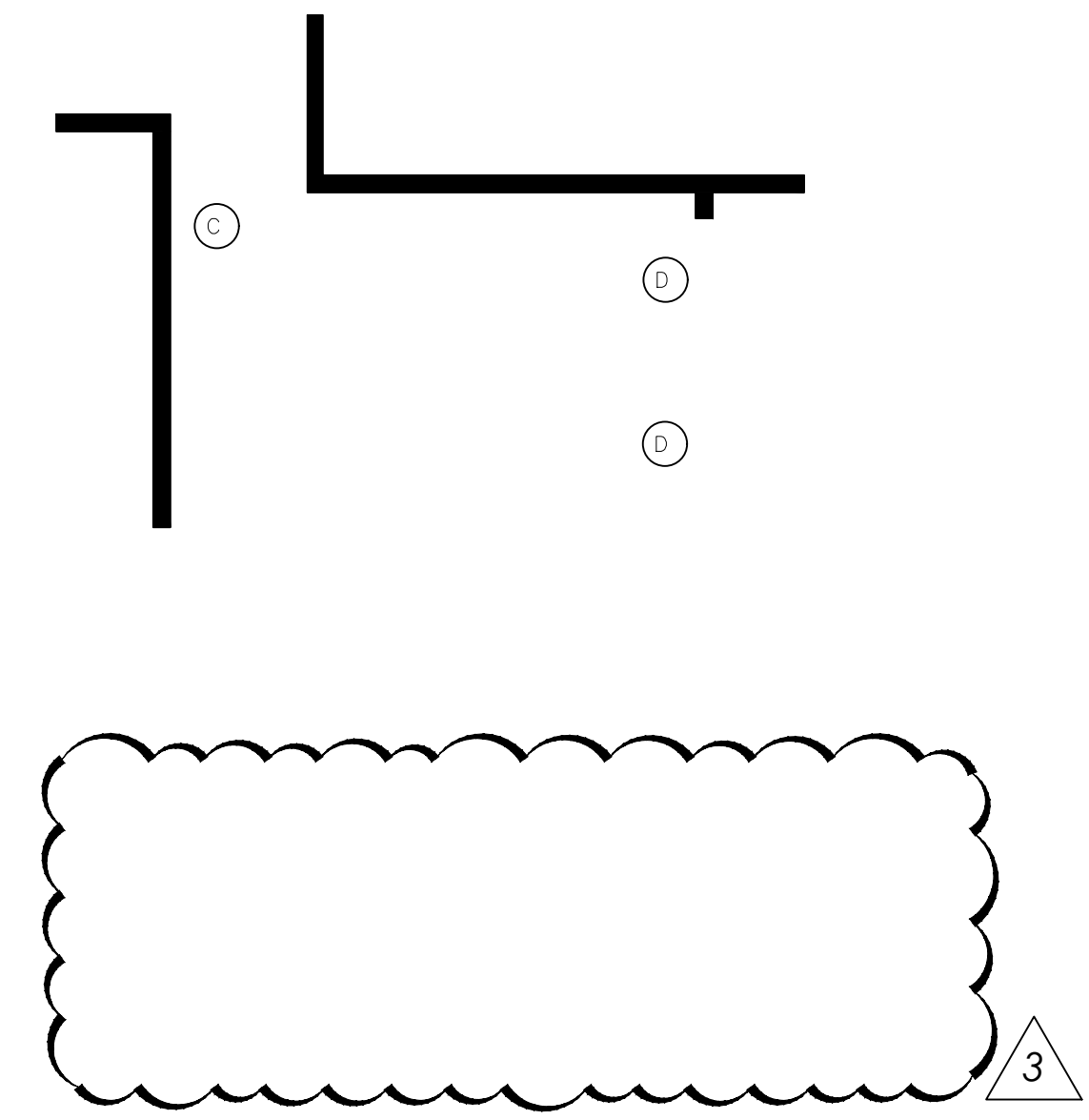
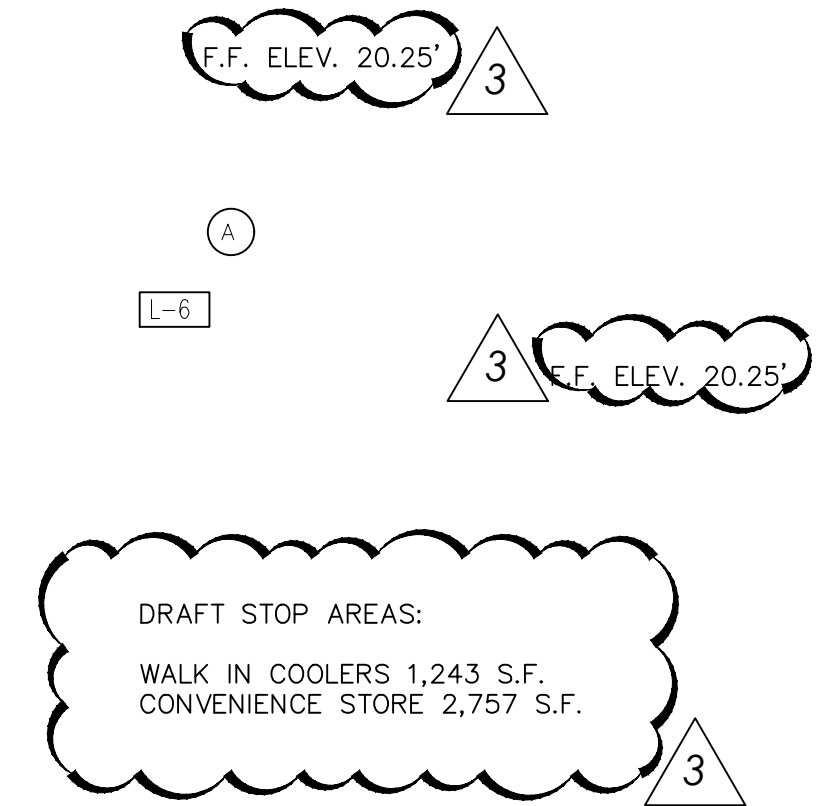
NOTE:

1	ALL SEAMS AND JOINTS SHALL BE LIQUID TIGHT WITH A CONTINUOUS EXTERNAL WELD
2	EXHAUST OUTLET SHALL BE LOCATED 10 FT. FROM ANY ADJACENT BUILDING, PARKING AREA ADJACENT PROPERTY LINE, WINDOW DOOR, OR AIR INTAKE OPENING AND SHALL BE LOCATED AT LEAST 10 FT. ABOVE THE ADJOINING GRADE LEVEL
3	EXHAUST OUTLET SHALL TERMINATE AT LEAST 40" ABOVE THE ROOF SURFACE
4	EXHAUST CANOPY SHALL HAVE A CLEARANCE FROM COMBUSTIBLE MATERIAL OF NOT LESS THAN 18". HOOD SIDE SHALL BE PROTECTED WITH APPROVED 1 HR. FIRE RATED MATERIALS AND HAVE 6" CLEARANCE.
5	FURNISHING AND INSTALL LARKIN MODEL SC STAINLESS STEEL COMMERCIAL COOKING HOOD 12'-0"X48"X24" NSF, NFPA 96-UL APPROVED.
6	EXHAUST FAN 4248 CFM AT 1,000 SP 1 1/2 HP. MODEL 195V8B 230/60/1PH U-762 GREASE RATED WITH A 16"X21" (16) GAUGE EXTERNAL WELDED DUCT MAKE-UP AIR 4248 CFM'S AT .250 SP MODEL ARS-15 230/60/1PH.
7	FLEX DUCT TO FIRE DAMPER @ HOOD APPROVED ALUMINUM GREASE FILTER.



FLOOR PLAN

SCALE: 1/4" = 1'-0"



OCCUPANCY SMALL ASSEMBLY

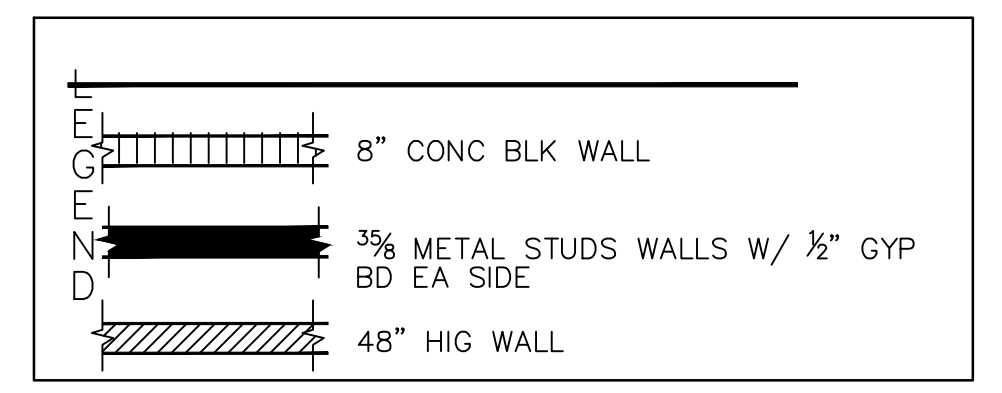
- \*TYPE OF CONSTRUCTION III-B UNSPRINKLERED
- \*OCCUPANCY GROUP "M"
- \*OCCUPANT LOAD PER TABLE 1004.1.2
- \*MERCANTILE 40 S.F. PER PERSON
- \*CONVENIENCE STORE S.F. = 2266 S.F.
- 2266 / 40 = 57 PERSONS
- \*EXIT EGRESS WIDTHS PER TABLE 1005.1.
- OCCUPANT LOAD 57 X 2 = 11.4 INCHES REQ'
- EGRESS WIDTH PROVIDED 120 INCHES
- EXIT TRAVEL DISTANCE PER TABLE 1015.1 = 150 FT.
- PROPOSED MAX EXIT TRAVEL DISTANCE = 80 FT

ALLOWABLE AREAS PER TABLE 503

BUILDING HT -----4 STORIES  
BUILDING S.F. -----12,500 S.F.

PROPOSED AREAS  
BUILDING HT -----1 STORY  
BUILDING S.F. -----4,000 S.F.

THIS PROJECT AND BUILDING ARE ACCESSIBLE TO THE PHYSICALLY HANDICAPPED INSIDE AND ACCESS FROM PARKING LOT.



D	PAIR 6'-0" X 6'-8" AUTOMATIC ALUMN. & GLASS ENTRANCE DOORS
B	4'-0"X6'-8" HOLLOW METAL DOOR W/HOLLOW METAL FRAME
C	3'-0"X6'-8" SOLID CORE FLUSH WOOD BEECH OR BIRCH INT. DOOR W/ WOOD FRAME
A	2'-6"X6'-8" BI-FOLD DOOR

REFER TO SHEET AD-2 FOR PRECAST LINTEL TYPES.

FLOOR PLAN