

CONVENIENCE STORE AT SHELL GAS STATION

5101 LUCKETT RD. FORT MYERS, FL 33905

SECTION 10, TOWNSHIP 44 S., RANGE 25 E. LEE COUNTY, FLORIDA

INDEX OF DRAWINGS

Page: Sheet Name

CS Cover Sheet/Site Plan/ Code Information

ARCHITECTURAL

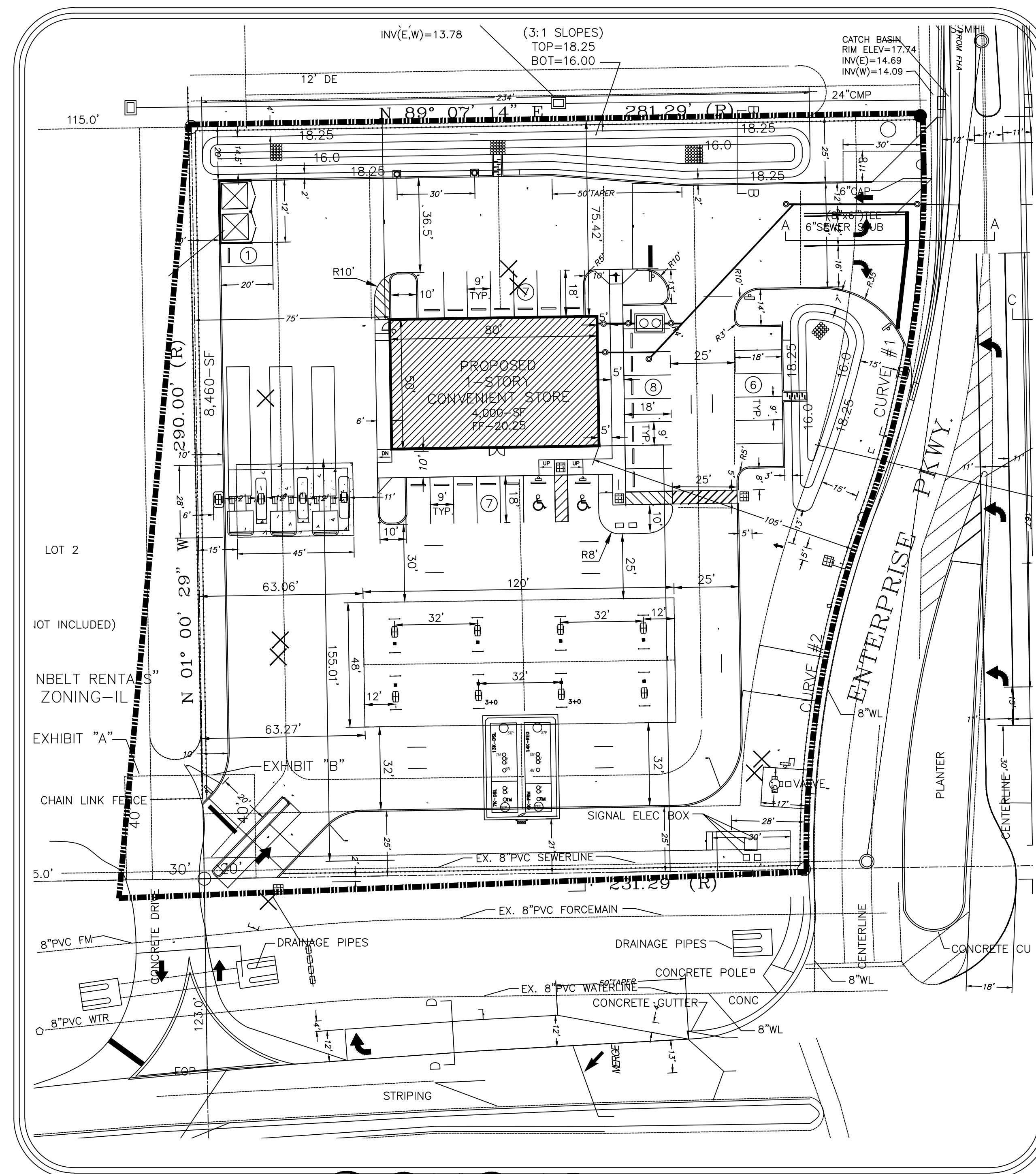
- AD-1 cs Standard Notes & Details
- A-1 cs Floor Plan Convenience Store
- A-2 cs Elevations
- A-3 cs Foundation Plan
- A-4 cs Roof Framing Plan
- A-5 cs Sections
- HVAC Mechanical Plan
- P-1 cs Plumbing Plan/Sewer
- P-2 cs Plumbing Plan/Piping
- P-3 cs Plumbing Riser Diagram/ Gas Riser
- E-1 cs Electrical Plan/ Lighting
- E-2 cs Electrical Plan/Power

STANDARD NOTES

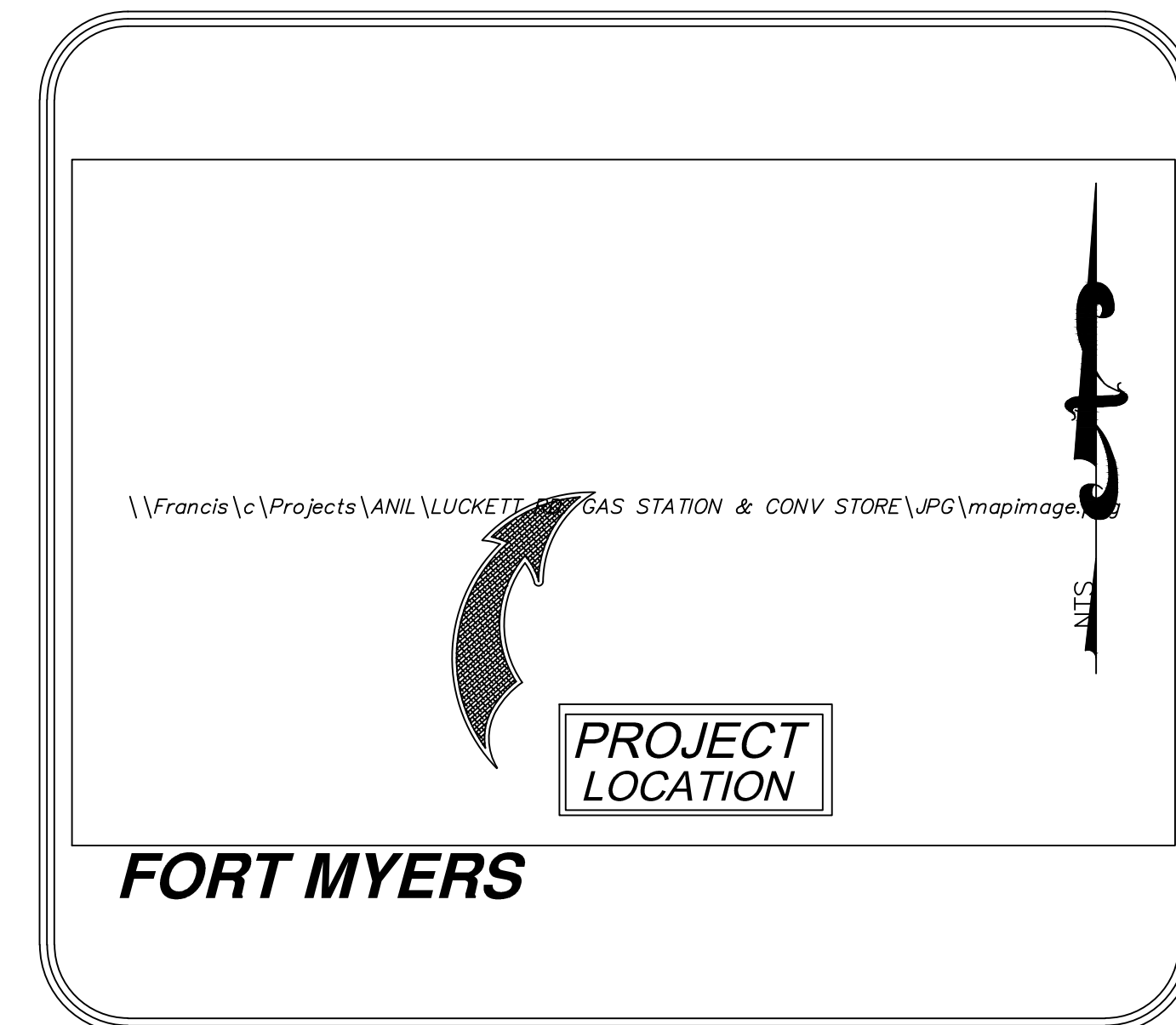
AD-2 General Notes

PRODUCT APPROVALS

- AD-P1 Roof Information
- AD-P2 Impact Windows Information
- AD-P3 Impact Doors Information
- AD-P3A Impact Store Front Doors Information
- AD-P4 Lintel Schedule Information
- AD-P5 Panel Wall Information



SITE PLAN
SCALE 1"=30'-0"



LOCATION MAP

LEGAL DESCRIPTION

LOT 3 BILLY CREEK COMMERCE CENTER UNIT 1 AS RECORDED IN PLAT BOOK 33 PAGE 116 OF THE PUBLIC RECORDS OF LEE COUNTY, FLORIDA.

PLANS COMPLY WITH 2007 FLORIDA BUILDING CODES, EXISTING BUILDING CODE, FLORIDA MECHANICAL CODE, FLORIDA PLUMBING CODE, 2007 FLORIDA PREVENTION CODE, 2008 NATIONAL ELECTRIC CODE (N.E.C.), LEE COUNTY LAND DEVELOPMENT CODE (L.D.C.), AND FLORIDA STATUTES (F.S.) AS WELL AS OTHER CODES AND ORDINANCES AS ADOPTED BY LEE COUNTY, FLORIDA.

COVER SHEET

CS