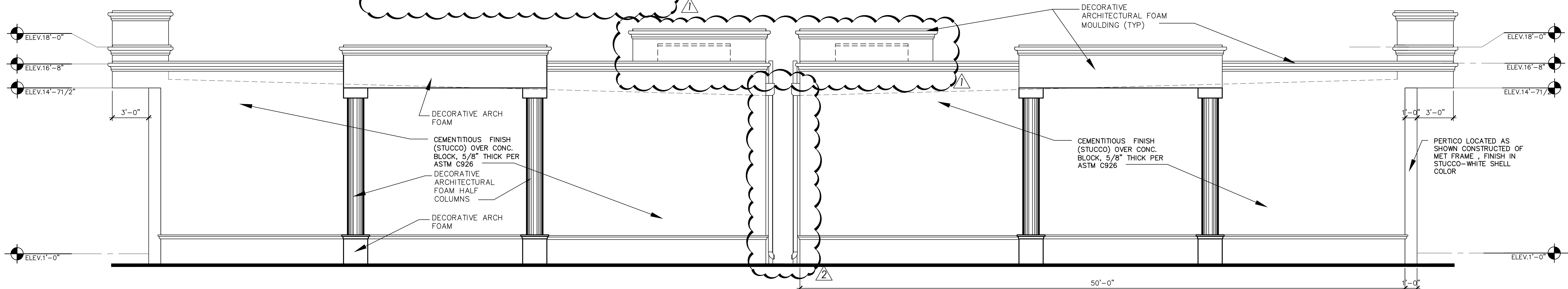


FRONT ELEVATION

SCALE: 1/4" = 1'-0"

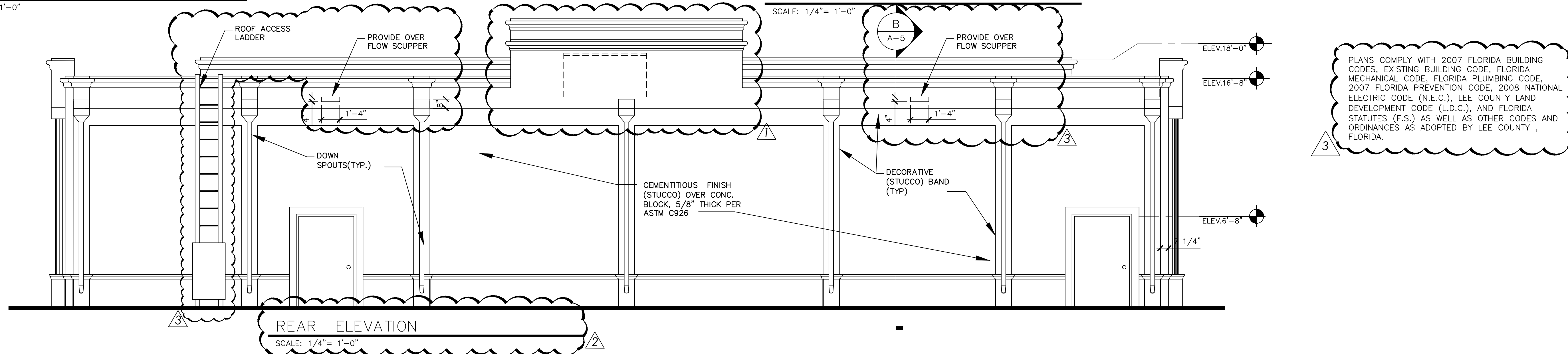


RIGHT SIDE ELEVATION

SCALE: 1/4" = 1'-0"

LEFT SIDE ELEVATION

SCALE: 1/4" = 1'-0"



REAR ELEVATION

SCALE: 1/4" = 1'-0"

ELEVATIONS