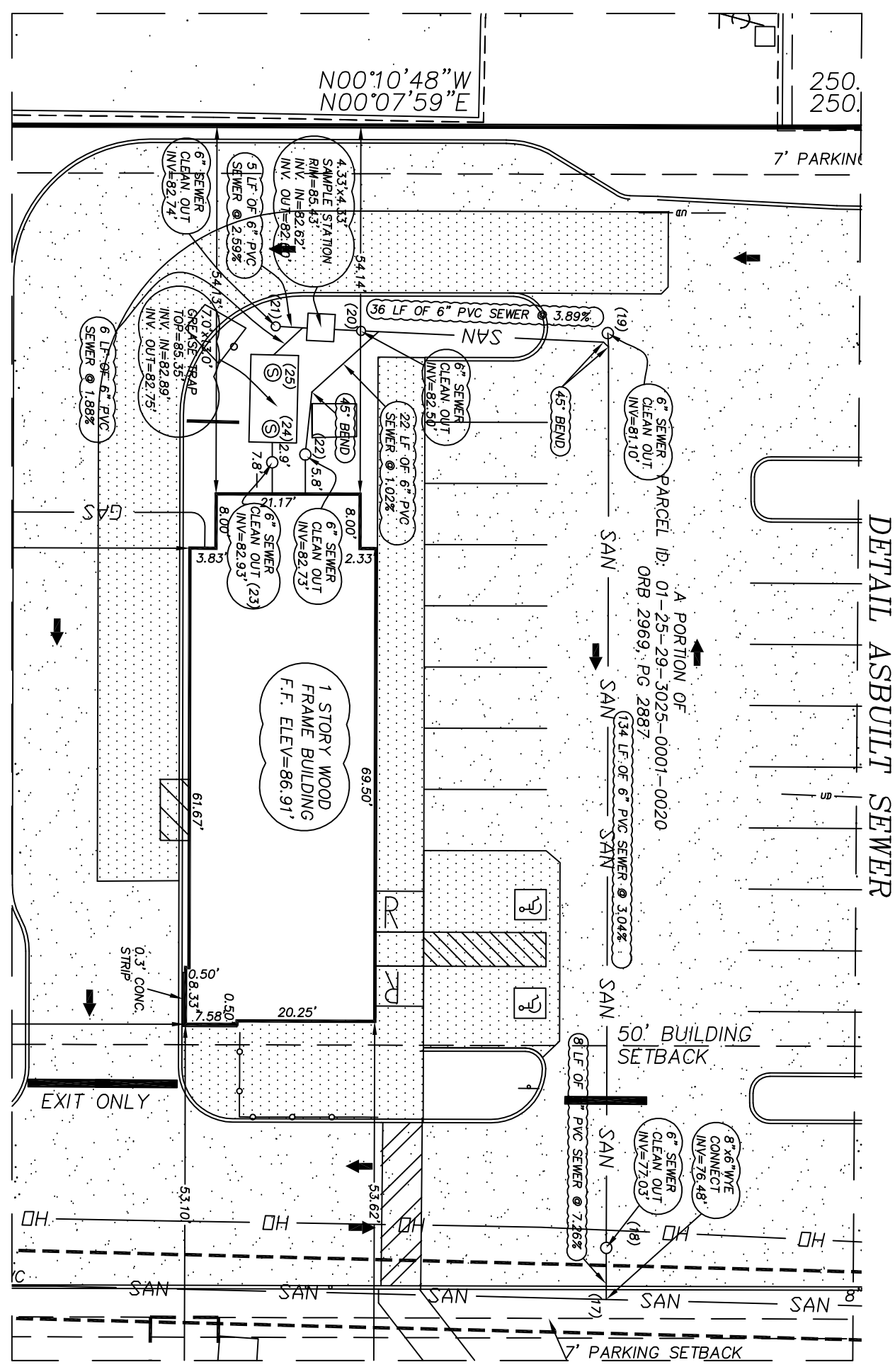


RECORD DRAWING FOR:  
**TACO BELL**  
 BUENAVENTURA BLVD.  
 KISSIMMEE, FLORIDA.

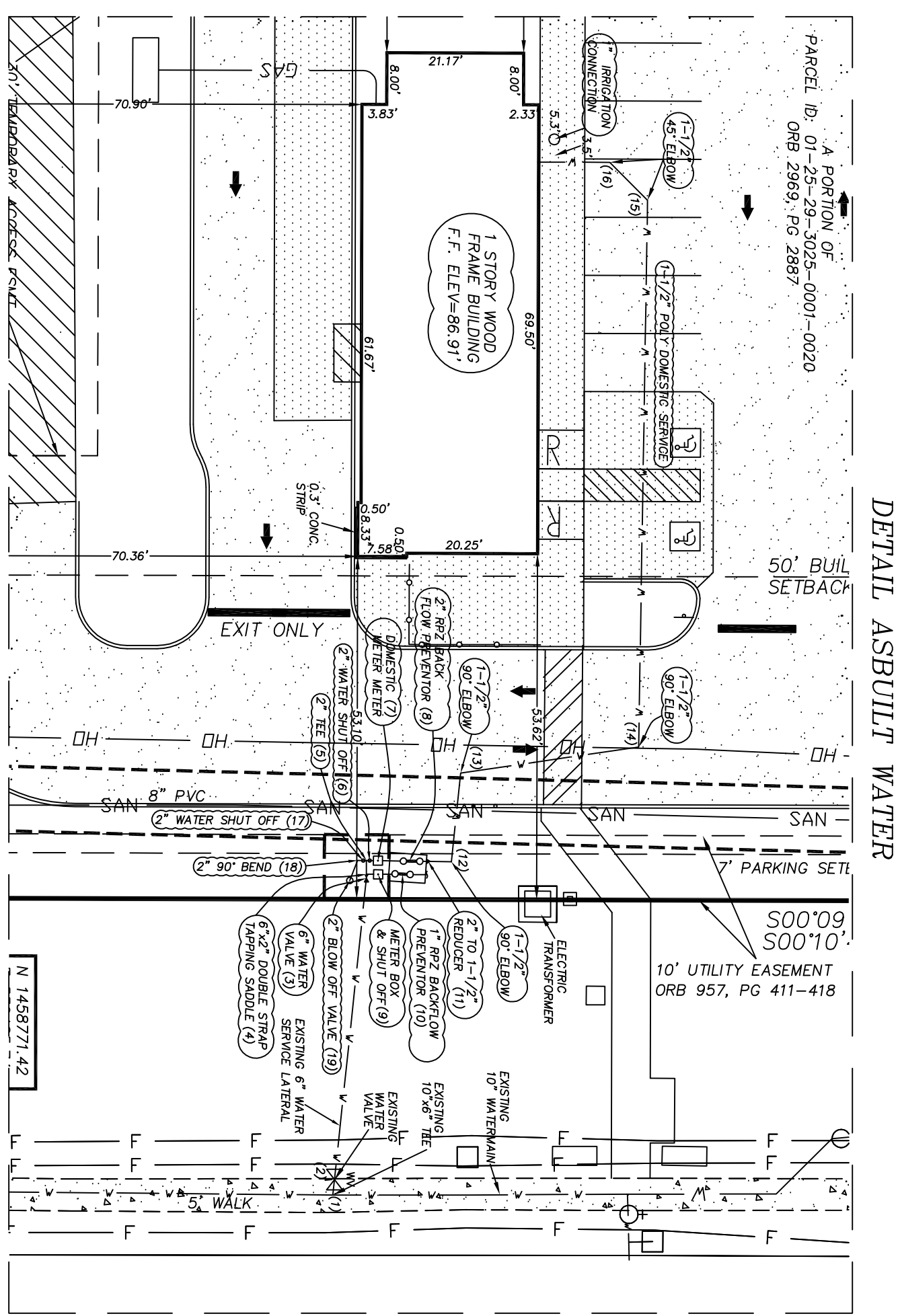
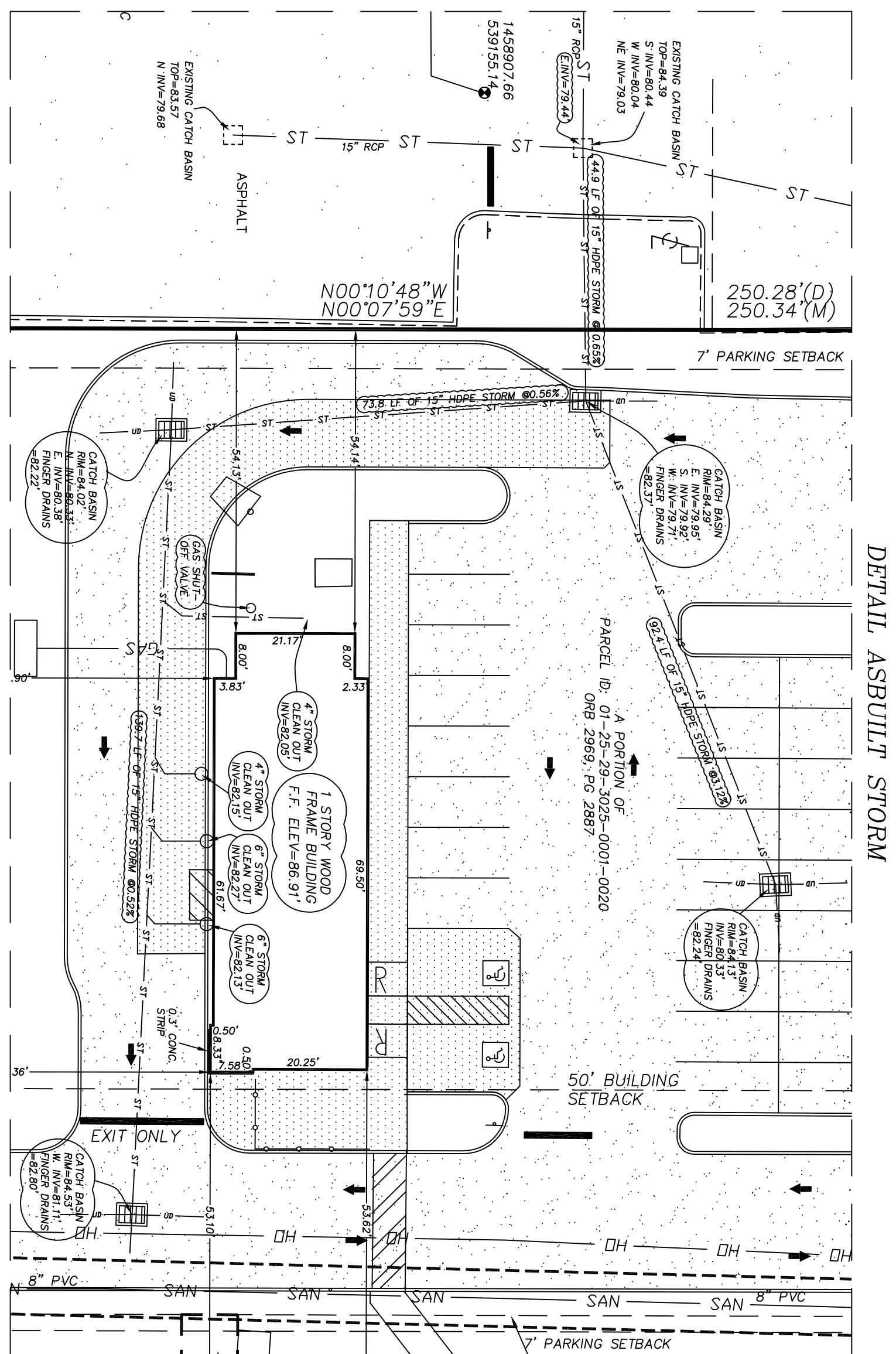
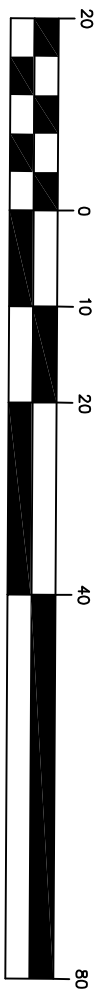
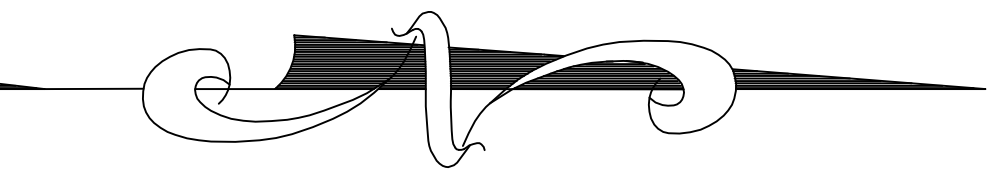
ASBUILT SEWER, WATER, & STORM

DETAIL SHEET



#	STRUCTURE	NORTHING	EASTING
17	8" x 6" W/E CONNECTOR	N 1458920.831	E 5393569.73
18	6" S/WER CLEAN OUT	N 1458920.851	E 5393562.74
19	6" S/WER CLEAN OUT	N 1458919.072	E 5393272.84
20	6" S/WER CLEAN OUT	N 1458917.711	E 5392277.84
21	6" S/WER CLEAN OUT	N 1458972.231	E 5392262.64
22	6" S/WER CLEAN OUT	N 1458976.591	E 539245.64
23	6" S/WER CLEAN OUT	N 1458971.721	E 539245.64
24	GREASE TRAP MANHOLE	N 1458971.951	E 539242.74
25	GREASE TRAP MANHOLE	N 1458971.951	E 539242.74

NOTE: THRES OF SEWER PIPING - 6" PVC SDR26 (PSI 110) - ASTM 3034



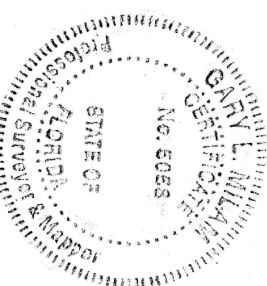
#	STRUCTURE	NORTHING	EASTING	ELEVATION	MAINTENANCE
1	EXISTING 10" x 6" TEE	N 1458985.101	E 5394281.17	N/A	PUBLIC
2	EXISTING 6" GATE VALVE	N 1458985.351	E 539425.17	81.7	PUBLIC
3	6" GATE VALVE	N 1458980.301	E 539319.12	82.3	PUBLIC
4	2" x 2" TEE	N 1458980.311	E 539376.36	84.1	PUBLIC
5	2" x 2" TEE	N 1458980.311	E 539376.36	84.1	PUBLIC
6	2" WATER SHUT OFF	N 1458980.811	E 539376.36	84.1	PUBLIC
7	DOMESTIC WATER METER	N 1458982.281	E 539376.36	84.9	PUBLIC
8	BACKFLOW PREVENTOR	N 1458982.281	E 539376.36	84.9	PUBLIC
9	2" WATER SHUT OFF	N 1458982.281	E 539376.36	84.9	PUBLIC
10	1" BACK FLOW PREVENTOR	N 1458985.991	E 539376.36	87.3	PRIVATE
11	2" TO 1-1/2" REDUCER	N 1458985.991	E 539376.49	83.3	PRIVATE
12	1-1/2" 90° ELBOW	N 1458973.471	E 539376.53	83.1	PRIVATE
13	1-1/2" 90° ELBOW	N 1458974.991	E 539382.80	82.6	PRIVATE
14	1-1/2" 90° ELBOW	N 1458974.991	E 539382.80	82.6	PRIVATE
15	1-1/2" 45° ELBOW	N 1458973.821	E 539274.10	82.7	PRIVATE
16	1-1/2" 45° ELBOW	N 1458973.991	E 539268.22	82.6	PRIVATE
17	2" WATER SHUT OFF	N 1458989.811	E 539376.36	84.1	PUBLIC
18	2" 90° BEND	N 1458989.811	E 539376.36	84.3	PUBLIC
19	2" 90° BEND	N 1458989.721	E 539376.36	83.2	PUBLIC

NOTE: 1. ALL SANITARY WATER SERVICE TUBING (CITS - OLD, CONTROLLED) OR 1-1/2" BLUE WATER SERVICE TUBING (CITS - OLD, CONTROLLED) - ASIM D2273-12 ENDORSE PE-4710 OR 1" BLUE WATER SERVICE TUBING (CITS - OLD, CONTROLLED) - ASIM D2273-12 ENDORSE PE-4710

WATER METER EASEMENT.  
 A PORTION OF LOT 2, ECKERD AT OSEOLA, AS RECORDED IN PLAT BOOK 8, PAGE 43, PUBLIC RECORDS OF OSCEOLA COUNTY, FLORIDA, BEING MORE PARTICULARLY DESCRIBED AS FOLLOWS:  
 COMMENCE AT THE NORTHEAST CORNER OF SAID LOT 2; RUN THENCE S00°10'48"E ALONG THE WEST RIGHT-OF-WAY LINE OF BUENAVENTURA BOULEVARD (200.00 FEET WIDE) A DISTANCE OF 533.00 FEET FOR A POINT OF BEGINNING; THENCE CONTINUE S00°10'48"E ALONG SAID WEST RIGHT-OF-WAY LINE A DISTANCE OF 10.00 FEET; THENCE RUN S89°49'12"W, 10.00 FEET; THENCE RUN N00°10'48"W, 10.00 FEET; THENCE RUN N89°49'12"E, 10.00 FEET TO THE POINT OF BEGINNING.

I CERTIFY THAT THESE RECORD DRAWINGS HAVE BEEN REVIEWED BY ME OR BY INDIVIDUAL(S) UNDER MY DIRECT SUPERVISION AND THAT THESE RECORD DRAWINGS INCORPORATE THE INFORMATION CONTAINED IN CHAPTER SU-17, BOARD OF PROFESSIONAL SURVEYORS AND MAPMAGERS, TO THE BEST OF MY KNOWLEDGE AND BELIEF THESE DRAWINGS ACCURATELY REPRESENT THE FIELD CONDITIONS AND THAT THE INFORMATION CONTAINED HEREIN IS TRUE AND APPLIES AS CONSTRUCTED. THE ACCURACY OF THESE RECORD DRAWINGS IS RELIANT ON THE ACCURACY APPLIED BY THE SURVEYOR THAT PREPARED THE CERTIFIED AS-BUILT SURVEY.

GARY L. MILAM  
 P.S.M. #5058  
 MILAM LAND SURVEYING, INC. L.B. #6802  
 2102 N.E. 3rd STREET  
 OCALA, FLORIDA 34470  
 (352) 622-7224



SHEET NO.

2 of 2

NO.	BY	DATE	REVISION
2	GM	2/26/19	ADDED PARKING GRADES
1	RAB	1/27/19	REVISED PER ENG. COMMENTS

Milam Land Surveying

PROFESSIONAL SURVEYORS & MAPPERS  
 GARY L. MILAM, P.S.M. #5058; L.B. #6802  
 2102 N.E. 3rd STREET, OCALA, FLORIDA 34470  
 (352) 622-7224 OFFICE (866) 425-3128 FAX

PROJECT NAME

RECORD DRAWING FOR:  
**TACO BELL, BUENAVENTURA BLVD,**  
**KISSIMMEE, FLORIDA**

DRAWN BY:	RAB	DATE:	12/06/18
CHECKED BY:	GM	BOOK NO.:	207/69
JOB NO.:	18-331		