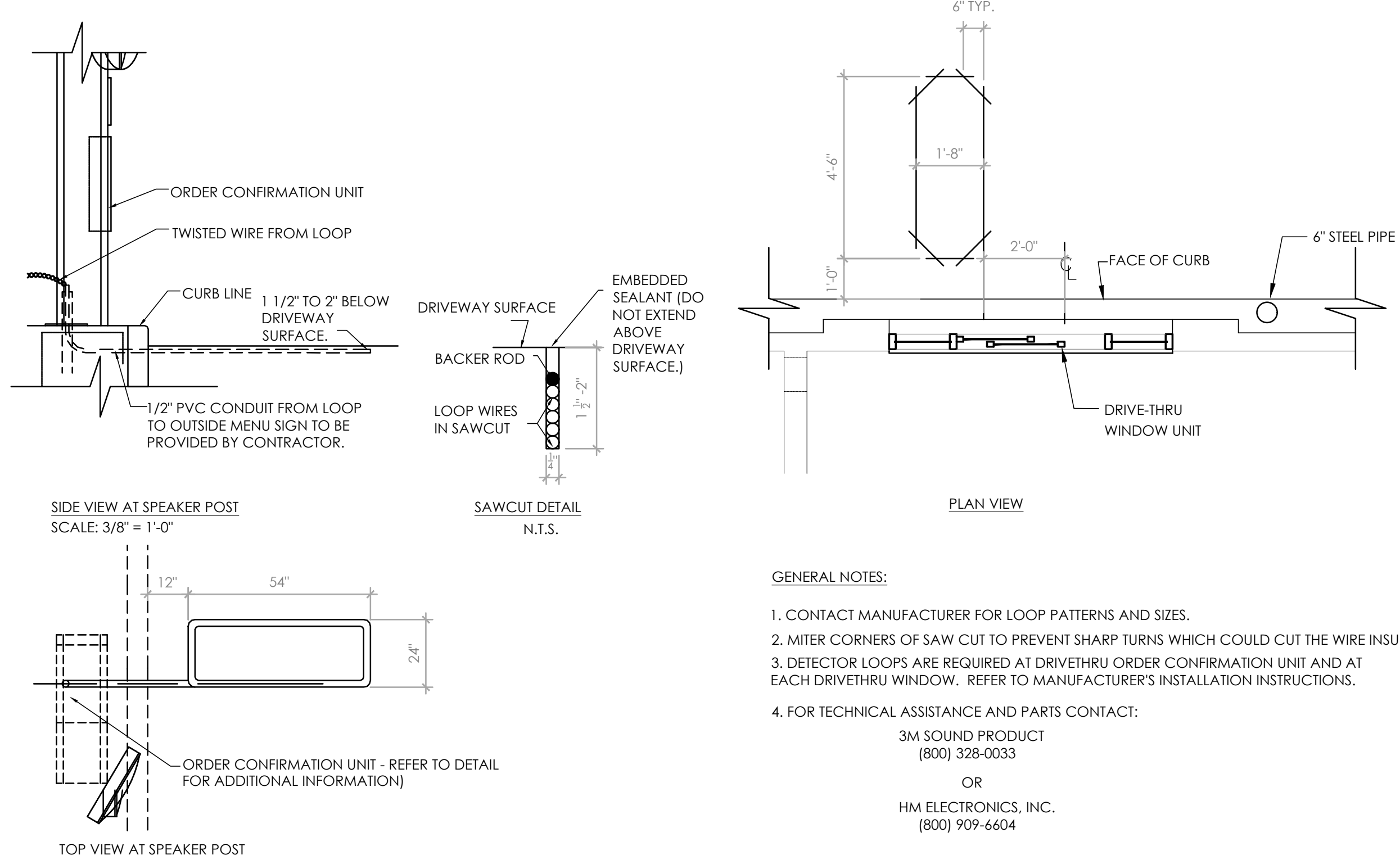
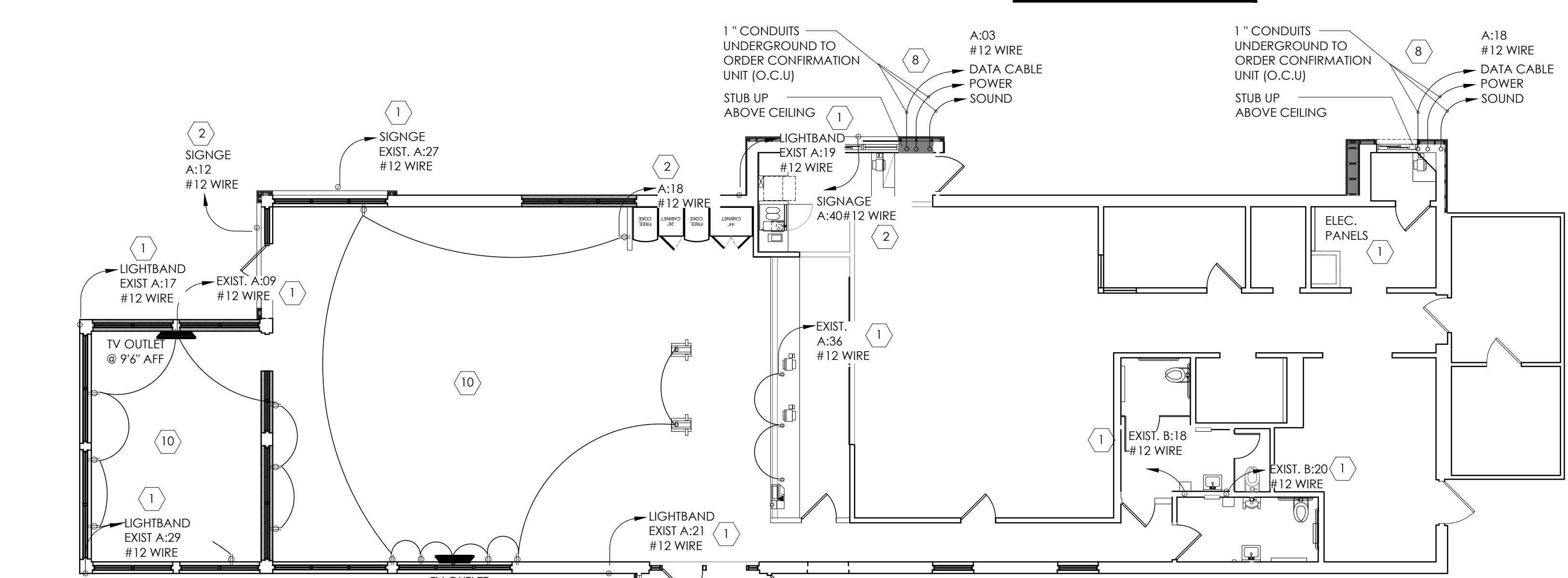


1 ELECTRICAL SITE PLAN
SCALE: NTS

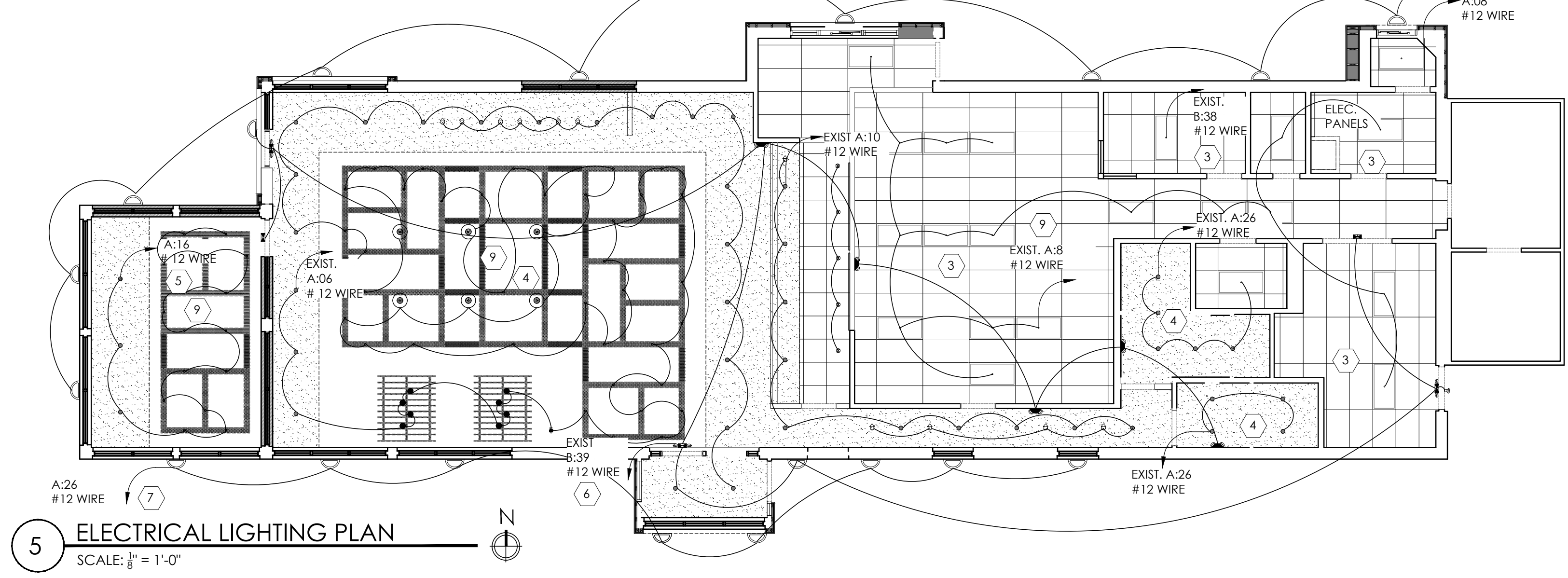
- ### CONNECTION
- 1 DEDICATED 120V SINGLE PHASE CONSTANT POWER TO OCU
 - 2 120V SINGLE PHASE POWER FOR CANOPY LIGHTS, MENUBOARD AND PREVIEW BOARD
 - 3 OCU DATA AND SPEAKER CABLES CONNECT TO POS RACK IN OFFICE (PULL WITHOUT CONNECTORS)
 - 4 AUDIO CABLES FOR SPEAKERS CONNECT TO MAIN UNIT AT THE DRIVE-THRU WINDOW
 - 5 PRIMARY DETECTOR LOOP WIRE CONNECTS
 - 6 SECONDARY DETECTOR LOOP CONNECTS TO POS THROUGH TIMING SYSTEM



2 SPEAKER POST DETAIL **3 DRIVE-THRU WINDOW ELECTRICAL DETAIL**



4 ELECTRICAL POWER PLAN
SCALE: 1/8" = 1'-0"



5 ELECTRICAL LIGHTING PLAN
SCALE: 1/8" = 1'-0"

NOTE: DETECTOR LOOPS ARE REQUIRED AT THE ORDER CONFIRMATION UNIT AND AT THE DRIVE-THRU WINDOWS

- ### GENERAL NOTES
- ALL WORK SHALL BE IN ACCORDANCE WITH THE NATIONAL ELECTRICAL CODE AND OTHER APPLICABLE CODES AND STANDARDS.
 - ALL DEVICE BOXES SHALL BE INSTALLED FLUSH AND CONDUITS RUN CONCEALED IN FINISHED AREAS EXCEPT AS SPECIFICALLY SHOWN/NOTED OTHERWISE.
 - INSTALL POWER AND CONTROL WIRING AND REQUIRED CONTROL COMPONENTS FOR AIR CONDITIONING SYSTEMS AS SHOWN/NOTED ON THE DRAWINGS AND PER OTHER APPLICABLE DRAWINGS/INSTRUCTIONS. REFERENCE MECHANICAL DRAWINGS.
 - WIRE SIZE SHALL BE #12 (MINIMUM) UNLESS OTHERWISE NOTED. WIRE SIZES SMALLER THAN #6 AWG SHALL BE THHN/THWN. #6 AWG WIRE AND LARGER SHALL BE THW. UNLESS NOTED OTHERWISE.
 - WIRE (CONDUCTOR) COLORS SHALL BE AS PER APPLICABLE CODES.
 - ALL CONDUCTORS SHALL BE COPPER.
 - ALL CONDUCTORS SHALL BE RUN IN CONDUIT, EXCEPT LOW VOLTAGE CONTROL AND COMMUNICATIONS CABLES.
 - ALL MATERIALS SHALL BE UL APPROVED.
 - ALL BRANCH CIRCUITS, EXCEPT INTERIOR LIGHTING, EXTERIOR BUILDING SIGNS, PARAPET LIGHTING AND SOFFIT LIGHTING TO HAVE A GREEN EQUIPMENT GROUNDING CONDUCTOR SIZED AS PER NEC 250-122.
 - PVC (SCHEDULE 40) PERMITTED BELOW SLAB AND BELOW GRADE ONLY.
 - IT IS INTENDED THAT AN EQUIPMENT GROUND CONDUCTOR (GREEN) SHALL BE RUN IN POWER CIRCUIT CONDUITS WHETHER OR NOT THE CONDUIT IS PVC.
 - ALL EMPTY CONDUITS TO BE PROVIDED WITH NYLON PULL STRING.
 - NEW TYPEWRITTEN PANEL DIRECTORY SHALL BE FURNISHED AFTER JOB IS COMPLETED REFLECTING ALL AS BUILT CONDITIONS.
 - ALL BRANCH CIRCUITS SHALL BE PROPERLY PHASE BALANCED.
 - ALL DATA EQUIPMENT TO BE FED BY A DEDICATED CIRCUIT WHICH CONSISTS OF A POWER CIRCUIT THAT FEEDS THIS TYPE OF EQUIPMENT ONLY WITH A SEPARATE GREEN GROUNDING CONDUCTOR CARRIED ALL THE WAY BACK TO THE PANEL TO BE CONNECTED TO THE GROUNDING SYSTEM.
 - FUSES SHALL BE DUAL ELEMENT, TIME DELAY TYPE UNLESS OTHERWISE NOTED.
 - EC SHALL VERIFY INTERIOR DECOR THEME TO BE USED AND COORDINATE WITH SAID THEME.
 - EC SHALL INSTALL AND CONNECT WIRING TO ALL SIGNS.
 - EC TO COORDINATED ROUGH-IN TO ALL EQUIPMENT WITH EQUIPMENT SUPPLIER PRIOR TO INSTALLING CONDUITS.
 - ALL CONDUIT RUNS TO KITCHEN EQUIPMENT SHALL BE RUN ABOVE CEILING.
 - MAINTAIN 12" CLEARANCE BETWEEN P.O.S. COMMUNICATION CONDUITS AND LIGHTING FIXTURES AS WELL AS POWER CONDUITS.
 - CUTTING AND NOTCHING OF 2x4 BEARING WALL FRAMING NOT TO EXCEED 7/8". BORING HOLES IN 2x4 BEARING WALL FRAMING NOT TO EXCEED 2 1/8".

- ### KEY NOTES
- 1 VERIFY IN FIELD ELECTRICAL PANEL CIRCUITS AND RE-USE EXISTING.
 - 2 VERIFY IN FIELD ELECTRICAL PANEL CIRCUITS AND USE SPARE, PROVED 20 A/1PHASE BREAKER.
 - 3 LIGHTS IN B.O.H. TO BE REPLACED 1:1 WITH NEW LED. RE-USE EXISTING CIRCUITS.
 - 4 LIGHTING IN DINING AREA AND RESTROOMS TO BE LED. RE-USE EXISTING CIRCUITS.
 - 5 LIGHTING IN MEETING ROOM TO BE LED. USE SPARE CIRCUIT IF NEEDED, USE 20 AMP/1 PHASE BREAKER.
 - 6 ALL EMERGENCY LIGHTING AND NIGHT LIGHTS TO BE LED. RE-USE EXISTING CIRCUITS.
 - 7 ALL EXTERIOR LIGHTING TO BE LED. RE-USE EXISTING CIRCUITS.
 - 8 PROVIDE NEW ELECTRICAL AND DATA FOR DRIVE THRU. SEE PLAN FOR DETAILS. RE-USE EXISTING CIRCUIT OR SPARE. PROVIDE 20 AMP/1 PHASE BREAKER.
 - 9 ALL SWITCHING AND TIME CLOCKS TO REMAIN.
 - 10 ALL OUTLETS TO BE AT 12" AFF UNLESS OTHERWISE NOTED.

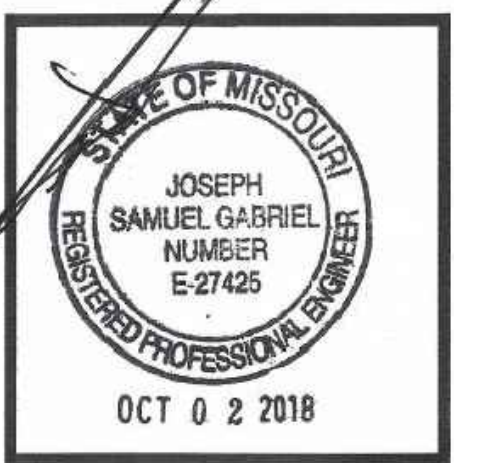
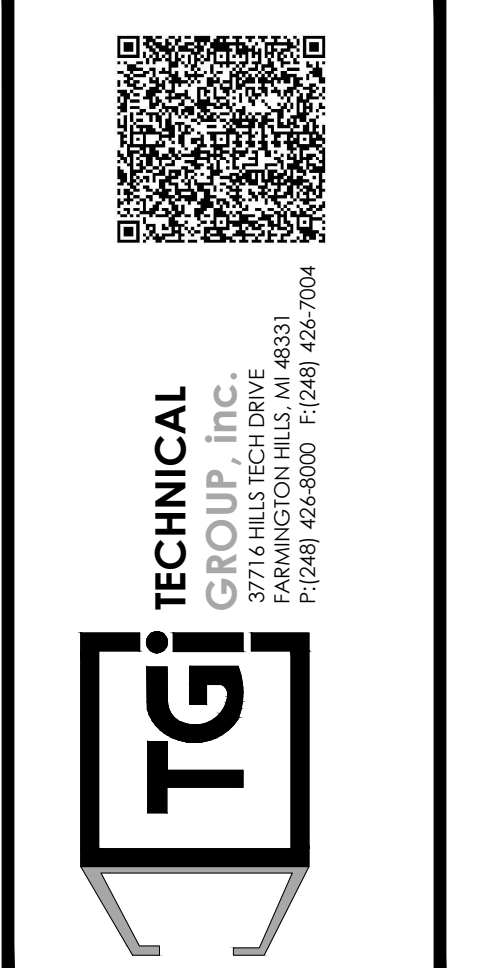
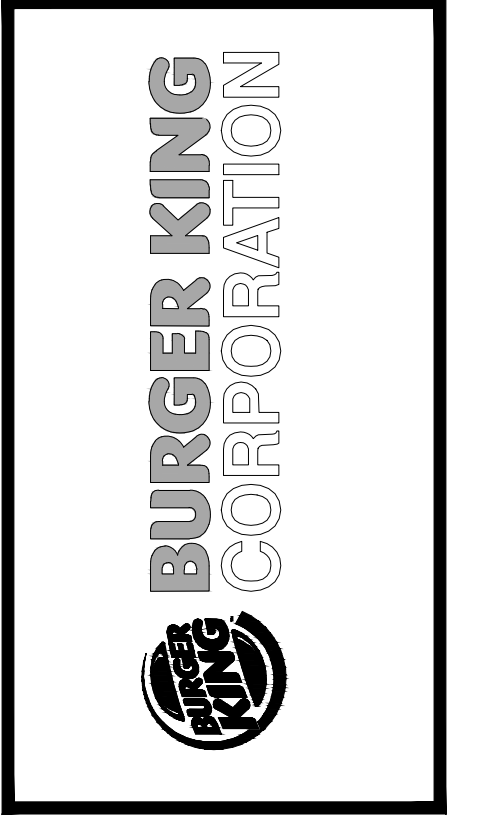
ELECTRICAL SYMBOLS

⊙	OCCUPANCY SENSORS
⊕	JUNCTION BOX
⊞	EXHAUST FAN
Ⓢ	TOGGLE SWITCH - SINGLE POLE HUBBELL #1221-1, AT 46" A.F.F.
Ⓢ₃	3 WAY TOGGLE SWITCH AT 46" A.F.F.
Ⓢ₆	DIMMER TOGGLE SWITCH AT 46" A.F.F.
Ⓢ⊕	GROUND FAULT INTERRUPT OUTLET (110V)
⊞	DISCONNECT SWITCH
Ⓢ	PHONE/DATA JACK
Ⓢ	PANEL-CIRCUIT NUMBER
Ⓢ	TELEPHONE OUTLET FOR P.O.S. MODEM (ALL OUTLETS HOMERUN IN 3/4" CONDUIT TO TELEPHONE BACKBOARD) MOUNT 96" A.F.F.
—	CONDUIT
—	ELECTRICAL PANEL

NO.	DATE	BY	NOTES
1	08.10.18	DB	FOR SUBMITTAL TO BIC
2	08.30.18	DB	REVISIONS SUBMITTAL TO BIC
3	09.19.18	DB	REVISIONS TO CITY
4	10.26.18	EMK	REVISIONS TO CITY
5	11.05.18	EMK	REVISIONS TO CITY

Drawn By: DB
Checked: SB
Scale: AS NOTED
Date: 08.01.18

ALL WORK SHALL BE IN ACCORDANCE WITH THE NATIONAL ELECTRICAL CODE AND OTHER APPLICABLE CODES AND STANDARDS. THIS PROJECT IS THE PROPERTY OF BURGER KING CORPORATION. ANY REVISIONS TO THIS PROJECT MUST BE APPROVED BY BURGER KING CORPORATION. THIS PROJECT IS THE PROPERTY OF BURGER KING CORPORATION. ANY REVISIONS TO THIS PROJECT MUST BE APPROVED BY BURGER KING CORPORATION.



PROJECT BURGER KING #123 1517 S. BELT HWY ST. JOSEPH, MO 64507	SHEET TITLE ELECTRICAL PLANS
DO NOT SCALE THIS PRINT. USE FIGURED DIMENSIONS ONLY.	
JOB # TG-18531	SHEET E-1