

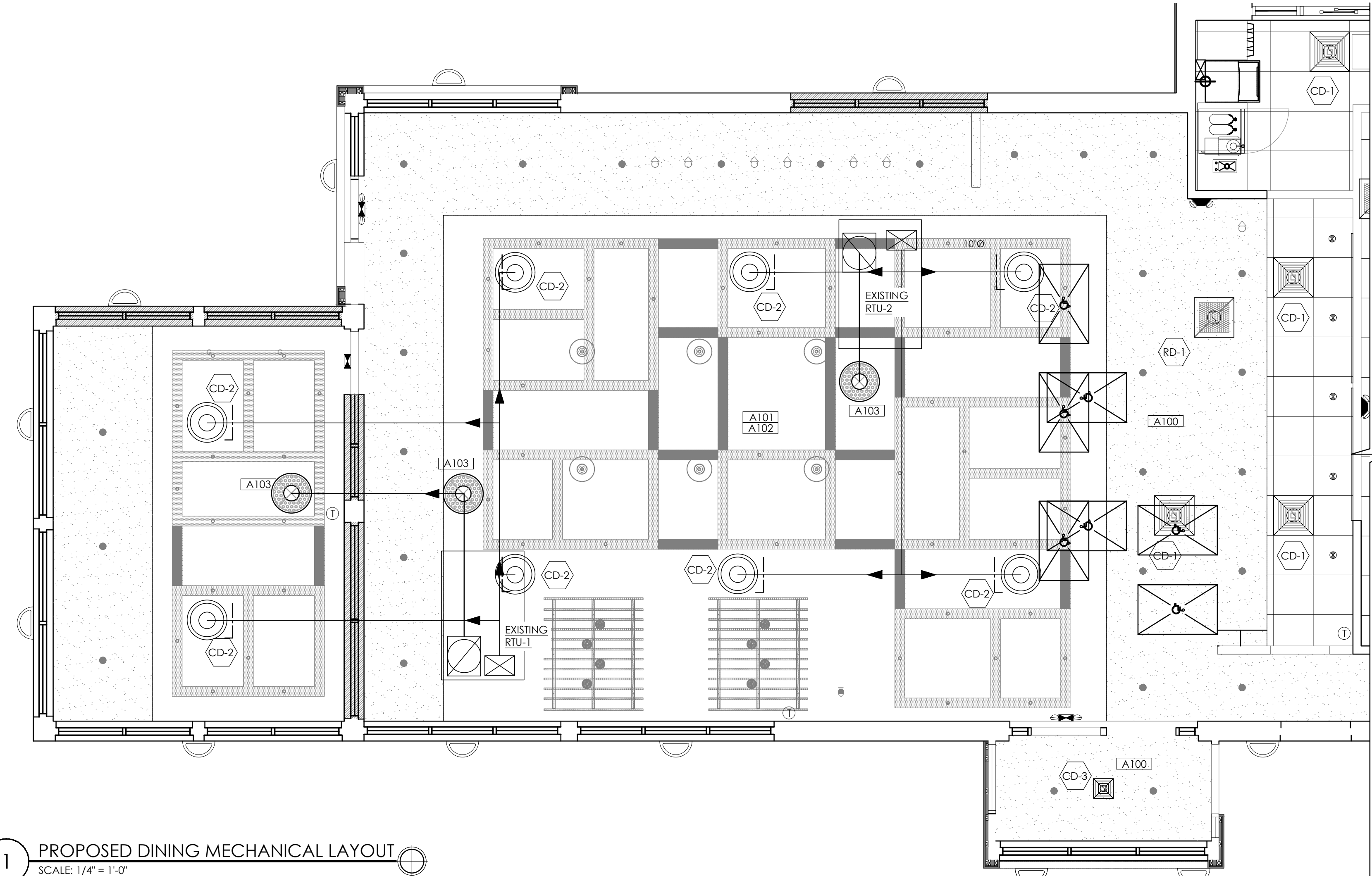
HVAC LEGEND	
SYMBOL	DESCRIPTION
	SUPPLY AIR DIFFUSER
	RETURN AIR GRILLE
	THERMOSTAT
	VOLUME DAMPER
	DUCT REDUCTION

SCOPE OF WORK PROPOSED	
A100	REPLACE HVAC GRILLES, DIFFUSERS AND THERMOSTATS THROUGHOUT.
A101	REPLACE ALL EXISTING SOFT DUCT WITH NEW SPIRAL DUCT IN EXPOSED CEILING, MATCH DUCT SIZING EQUIVALENCIES WITH EXISTING.
A102	INSTALL NEW VOLUME DAMPERS AS NEEDED.
A103	TURN RETURN DUCT UP 45° WITH 1/2" SCREEN, BOTTOM OF DUCT TO BE FLUSH WITH BOTTOM OF TRUSS.

DIFFUSER SCHEDULE							
TAG #	DESCRIPTION	SIZE	MAX CFM	MAX PRESSURE DROP (WG)	MAX NO LEVEL	MANUFACTURE	MODEL
CD-1	SQUARE LOUVER FACED CEILING DIFFUSER	24"X24"	MATCH EXIST.	.01"	30	TITUS	TMSA
CD-2	ROUND LOUVER FACED	MATCH EXIST.	MATCH EXIST.	.01"	30	TITUS	TMRA #01 ALUMINUM
CD-3	SQUARE LOUVER FACED CEILING DIFFUSER	12X12	MATCH EXIST.	.01"	30	TITUS	TMSA
RD-1	SQUARE PERFORATED RETURN DIFFUSER	24"X24"	MATCH EXIST.	.01"	30	TITUS	PAR

REMARKS:
 1. MATCH EXISTING DIFFUSER CFM
 2. PROVIDE MOUNTING FRAME AND BORDER STYLE TO ACCOMMODATE REFLECTED CEILING PLAN.
 3. PROVIDE VOLUME DAMPER
 4. ALL DIFFUSERS GRILLES TO BE WHITE, U.O.N.
 5. BOTTOM OF ROUND DIFFUSERS ARE TO BE MOUNTED FLUSH WITH THE BOTTOM OF THE TRUSSES.

- GENERAL NOTES**
- HVAC CONTRACTOR:**
- THE HVAC CONTRACTOR SHALL FURNISH AND INSTALL THE HVAC DUCT AND DIFFUSERS/RETURNS.
 - ALL FLEX DUCT SHALL BE FOIL-BACKED, R-6, U.L. LISTED, CLASSIFIED AS A CLASS 1 AIR DUCT, AND MEET LOCAL CODE REQUIREMENTS.
 - ALL DUCTWORK SHALL BE INDEPENDENTLY HUNG FROM STRUCTURAL MEMBERS.
 - ALL DUCTWORK SHALL BE FABRICATED AND INSTALL PER SMACNA LOW-VELOCITY DUCT MANUAL (LATEST ISSUE).
 - UNLESS OTHERWISE NOTED, EVERY SUPPLY TAP COLLAR SHALL HAVE A LOCKING MANUAL VOLUME DAMPER.
 - THE HVAC CONTRACTOR SHALL COORDINATE DIFFUSER LOCATION ON SITE WITH THE MOST RECENT REFLECTED CEILING PLAN.
 - UPON COMPLETION OF PROJECT THE HVAC CONTRACTOR SHALL HIRE AN A.A.B.C. OR N.E.B.B. CERTIFIED, INDEPENDENT TEST AND BALANCE COMPANY TO CONDUCT A COMPLETE, CERTIFIED TEST AND BALANCED OF ALL HVAC EQUIPMENT, PROVIDE A WRITTEN REPORT TO NCA CONSULTANTS. ALL CAPACITIES MUST BE SET TO AMOUNTS INDICATED ON THE FLOOR PLAN AND SCHEDULES.
 - ASSUMPTIONS OF EXISTING DUCT LOCATIONS ARE BASED ON PROTOTYPICAL DRAWINGS. EXACT LOCATIONS MAY VARY. CONTRACTOR IS TO CONTACT THE ENGINEER OF ANY DISCREPANCIES PRIOR TO INSTALLATION.
 - DIFFUSER PLACEMENT SHOWS IN FOR REFERENCE ONLY, CONTRACTOR IS TO COORDINATE LOCATION WITH REFLECTED CEILING PLAN.
- GENERAL CONTRACTOR:**
- * ANY EXPOSED HVAC WORK IN THE DINING ROOM IS TO BE PRIMED AND PAINTED

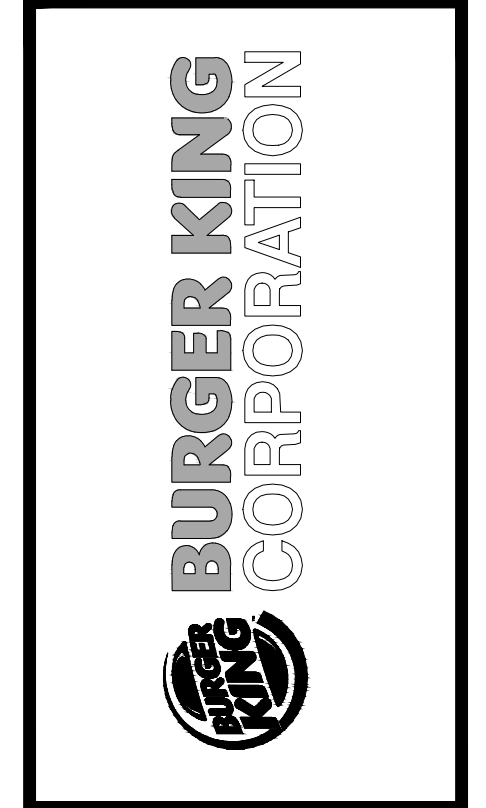


1 PROPOSED DINING MECHANICAL LAYOUT
 SCALE: 1/4" = 1'-0"

NO.	DATE	BY	NOTES
1	08/01/2018	DB	FOR SUBMITTAL TO BKC
2	08/30/2018	DB	REVISIONS SUBMITTAL TO BKC
3	09/26/2018	BK	SUBMITTAL TO CITY
4	2018	BK	REVISIONS TO CITY
5	2018	BK	REVISIONS TO CITY

Drawn By: DB
 Checked: SB
 Scale: AS NOTED
 Date: 08.01.18

ALL RIGHTS RESERVED. NO PART OF THESE DRAWINGS OR SPECIFICATIONS MAY BE REPRODUCED OR USED IN CONNECTION WITH ANY WORK OTHER THAN THE SPECIFIC PROJECT FOR WHICH THEY WERE PREPARED, WITHOUT PRIOR WRITTEN AUTHORIZATION FROM THE ARCHITECT.



TGI TECHNICAL GROUP, Inc.
 3771 N. HILLS TECH DRIVE
 FARMINGTON HILLS, MI 48331
 734.461.7400 FAX 734.461.7004

STATE OF MISSISSIPPI
 REGISTERED PROFESSIONAL ENGINEER
 JOSEPH SAMUEL GABRIEL
 NUMBER E-27425
 OCT 02 2018

PROJECT
 BURGER KING #123
 1517 S. BELT HWY
 ST. JOSEPH, MO 64507

SHEET TITLE
 DINING ROOM
 MECHANICAL LAYOUT

DO NOT SCALE THIS PRINT. USE FIGURED DIMENSIONS ONLY.

JOB #
 TG-18531

SHEET
 A-7