

08/17/18

DATE	REVISIONS
06/06/18	CLIENT REVISIONS
04/06/18	ISSUED FOR PERMIT
07/25/18	ISSUED FOR BID

CONTRACT DATE: 01.08.18
BUILDING TYPE: T40CAL-SOL
PLAN VERSION: FEB 2018
BRAND DESIGNER: GPD GROUP
SITE NUMBER: 312032
STORE NUMBER: 2018088.03

TACO BELL

5070 W. ATLANTIC BLVD.
DELRAY BCH, FL 33484

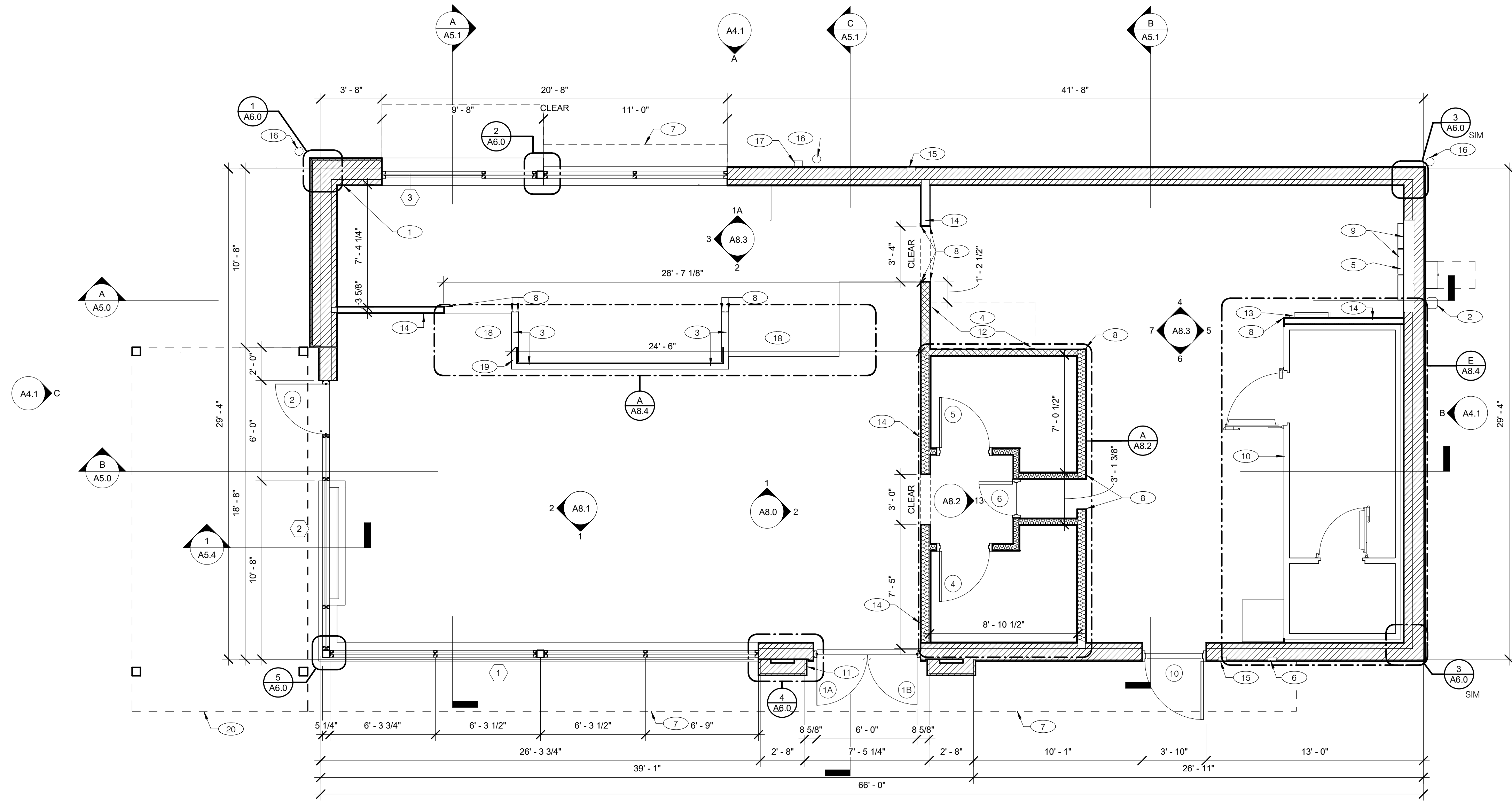


T40
OPEN KITCHEN
CALIFORNIA SOL

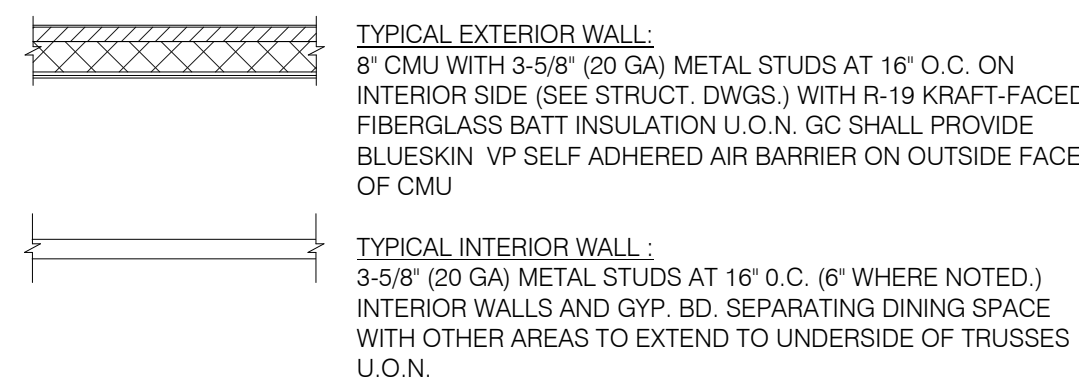
FLOOR PLAN

A1.0

PLOT DATE: 8/16/2018 11:27:14 AM



FLOOR PLAN 1/4" = 1'-0" A



WALL SUBSTRATES:
- DINING ROOM:
1/2" GYPSUM WALLBOARD TO 6" ABOVE CEILING OR TO UNDERSIDE OF DECK WHERE EXPOSED SEE 8 & 15 / A6.5. (NOTE: THE CEMENT BOARD SPECIFICATION IS DESIGNED TO ALLOW THE G.C. FLEXIBILITY.)
- KITCHEN WALLS AND DINING ROOM CLOSET:
1/2" CEMENT WALLBOARD FROM T.O. SLAB WITH 1/2" CDX PLYWOOD W/FRP SURFACE FINISH TO 6" ABOVE CEILING HEIGHT U.O.N. IF DOUBLE SIDED SHEAR WALL PLYWD IS SPECIFIED THE PLYWOOD SHALL BE CONTINUOUS FROM SILL PLATE TO TOP PLATE. SEE 4 & 11 / A6.5.
- RESTROOM WALLS:
5/8" CEMENT WALLBOARD FROM T.O. SLAB TO 48" A.F.F. WITH 5/8" HI-IMPACT BRAND XP WALLBOARD, MOISTURE RESISTANT GYPSUM WALLBOARD FROM T.O. CEMENT BOARD TO 6" ABOVE CEILING HEIGHT U.O.N. NO SUBSTITUTIONS ALLOWED. FINISH AS SCHEDULED. SEE 12 / A6.5.
- ALL OTHER FRAME WALL CONDITIONS:
1/2" CEMENT WALLBOARD FROM T.O. SLAB TO 48" A.F.F., WITH 1/2" GYPSUM WALLBOARD FROM T.O. CEMENT BOARD TO 6" ABOVE CEILING HEIGHT U.O.N. FINISH AS SCHEDULED.

TYPICAL EXTERIOR WALL:
8" CMU WITH 3-5/8" (20 GA) METAL STUDS AT 16" O.C. ON INTERIOR SIDE (SEE STRUCT. DWGS.) WITH R-19 KRAFT-FACED FIBERGLASS BATT INSULATION U.O.N. GC SHALL PROVIDE BLUESKIN VP SELF ADHERED AIR BARRIER ON OUTSIDE FACE OF CMU

INTERIOR SOUND-RATED WALL:
TYPICAL INTERIOR WALL W/ 3-1/2" UNFACED FIBERGLASS BATT INSULATION.

HOODWALL:
600S162-33 METAL STUD WALL WITH 20 GA. S.S. PANEL BEHIND HOOD. REFER TO DETAIL 1/M3.0 FOR EXTENT OF S.S. PANEL. PROVIDE 3-1/2" UNFACED FIBERGLASS BATT INSULATION.

DIMENSIONS:
A. ALL DIMENSIONS ARE TO FACE OF CMU U.O.N. REFER TO FOUNDATION PLAN FOR FACE OF CONC. DIMENSIONS.
B. DIMENSIONS NOTED AS 'CLEAR' OR 'HOLD' ARE MIN. REQ'D. NET CLEARANCE FROM FACE OF WALL / WAINSCOT FINISH. VERIFY FINAL EQUIPMENT SIZES W/ VENDOR PRIOR TO INT. WALL FRAMING.

WINDOWS / DOORS:
A. SEE SHT. A1.1 FOR WINDOW TYPES AND DOOR SCHEDULE.
B. ALL DOOR AND WINDOW OPENING DIMENSIONS ARE TO ROUGH OPENING.

FINISH SUBSTRATES:
A. PROVIDE 1/2" THICK CEMENTITIOUS BD. FROM FLOOR SLAB TO 48" A.F.F. MIN. IN LIEU OF GYP. BD. AT ALL WALLS EXCEPT SHEARWALL SURFACES. U.O.N.
B. ALL JOINTS, GAPS OR SPACES LEADING TO ALL HOLLOW OR INACCESSIBLE SPACES SHALL BE SEALED WITH 'NSF INTERNATIONAL' APPROVED SEALANTS.
C. ALL BACK OF HOUSE AND OFFICE WALLS SHALL HAVE 1/2" CDX PLYWOOD SUBSTRATE, U.O.N.

GENERAL:
A. PROVIDE THREE FIRE EXTINGUISHERS - (2) 10 lb. BC and (1) 10 lb. ABC - TO COMPLY WITH LOCAL FIRE CODE. LOCATE PER DIRECTION OF FIRE MARSHALL OR LOCAL AUTHORIZING AGENT.
B. DRAWINGS ARE BASED UPON CMU AND METAL FRAMING. UTILIZATION OF METAL STUDS OR NON-BEARING INTERIOR PARTITIONS, BULKHEADS AND SOFFITS IS TO BE MAINTAINED.

- 1 STARTING POINT. ALL SUB-TRADES SHALL USE THIS POINT AS A BEGINNING LAY-OUT (INSIDE FACE OF EXT. WALL STUDS).
- 2 GAS SERVICE.
- 3 LOW WALL BY G.C., SEE DETAILS ON A8.3. COORDINATE WITH STRUCTURAL DRAWINGS.
- 4 HOOD WALL, SEE EQUIPMENT PLAN A2.0 AND SCHEDULE A2.1
- 5 ELECTRICAL MAIN SWITCH BOARD. REFER TO ELECT. DWGS.
- 6 CO2 FILL BOX LOCATION. SEE DETAIL 5/A6.1
- 7 LINE OF AWNING ABOVE (BY SIGNAGE VENDOR)
- 8 S.S. CORNER GUARD / WALL CAP, TYP. ALL CORNERS IN BACK-OF-HOUSE FROM REAR WALL TO THE KITCHEN SIDE OF THE SERVICE COUNTER. SEE DETAIL 13&14/A6.5
- 9 RECESSED SWITCHGEAR / ELECTRIC PANELS. SEE ELECTRICAL DRAWINGS.
- 10 PRE-ENGINEERED MODULAR PANEL WALK-IN BOX (COOLER AND FREEZER). SITE ASSEMBLED. SEE EQUIPMENT PLAN A2.0
- 11 KNOX BOX ON SIDE WALL @ 5'-0" A.F.F.
- 12 NON-COMBUSTIBLE METAL STUD CONSTRUCTION WITH TYPE 'X' GYP BOARD BEHIND HOOD. EXTEND MIN. 18" PAST HOOD ON EACH SIDE
- 13 ROOF LADDER. SEE DETAIL E.8.3
- 14 FULL HEIGHT WALL TO EXTEND TO BOTTOM OF THE ROOF DECK
- 15 HOSE BIB BOX AT 18" A.F.F. SEE DETAIL 7/A6.1
- 16 PIPE BOLLARD, SEE CIVIL DRAWINGS
- 17 4"x6" ALUMINUM DOWN SPOUTS
- 18 POS COUNTER / V-LINE HALF-WALL AND HAND-OFF PLANE BY GC
- 19 ROUTE 1 1/2" CONDUIT IN LOW WALL FROM CHEESE MELTER LOCATION TO CUSTOMER DRINK STATION FOR FILTERED WATER CONNECTION.
- 20 PATIO CANOPY STRUCTURE BY SIGNAGE VENDOR.

WALL

FLOOR PLAN

C

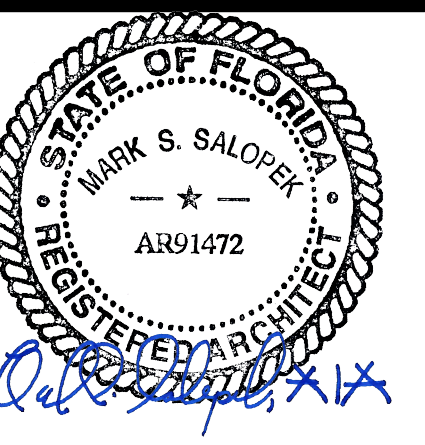
PLAN KEYNOTES

N.T.S.

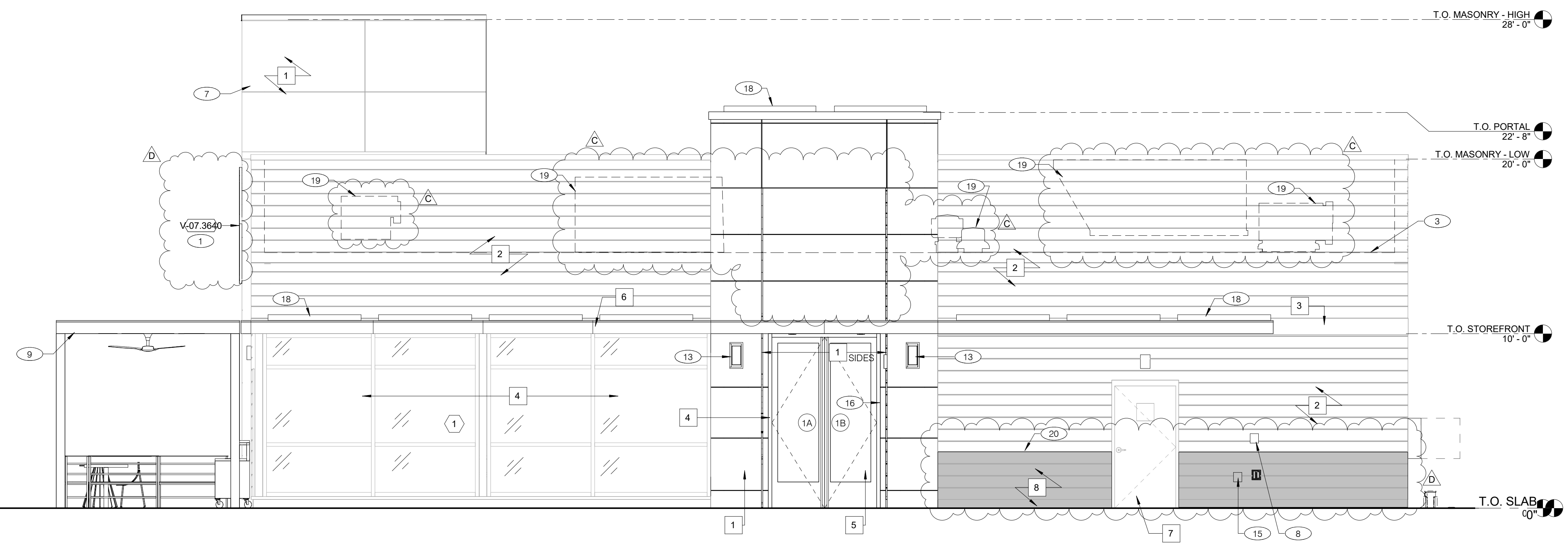
B

Mark S. Salopek, LLC

3638 West Galloway Drive
Richfield, OH 44286
330.572.2100 Fax: 330.572.2102



08/17/18



WEST ELEVATION 1/4" = 1'-0" **A**

NO.	QTY.	ITEM DESCRIPTION
V-07.3640	1	LARGE SWINGING BELL - CUSTOM SIZE FLAT CUT OUT WALL MOUNTED WITH EDGE LIGHTING - APPROX. 6'-9" X 7'-4" - 54 SF

SIGNAGE N.T.S. **E**

GENERAL NOTES N.T.S. **C**

MISCELLANEOUS:
A. SEE SHT A1.1 "WINDOW TYPES" FOR WINDOW ELEVATIONS.

SEALERS (REFER TO SPECS):
A. SEALANT AT ALL WALL AND ROOF PENETRATIONS.
B. SEALANT AT ALL WINDOW AND DOOR FRAMES AT HEAD AND JAMB. DO NOT SEAL SILL @ WINDOWS.
C. APPLY NEOPRENE GASKET (CONT.) BETWEEN BUILDING & CANOPY.

CRITICAL - DIMENSIONS:
A. REQUIRED CLEAR OPENING WIDTH TO ENSURE COORDINATION WITH STANDARD SIGNAGE/ BUILDING ELEMENTS DIMENSIONS.

NOTE: NO EXTERIOR SIGNS ARE WITHIN THE SCOPE OF WORK COVERED BY THE BUILDING PERMIT APPLICATION. THE GENERAL CONTRACTOR SHALL BE RESPONSIBLE FOR COORDINATING THE INSTALLATION OF ALL EXTERIOR SIGNS AND INSTALLATION OF REQUIRED BLOCKING AND ELECTRICAL CONNECTIONS FOR FINAL APPROVED SIGNS.

- 1 BUILDING SIGN, BY SIGN VENDOR. REQUIRES ELECTRICAL. SEE ELECTRICAL PLANS
- 2 DRIVE THRU WINDOW. SEE SHEET A1.0 AND A1.1.
- 3 DASHED LINE INDICATES ROOF LINE BEYOND.
- 4 4" DIA. BOLLARD. SEE CIVIL DRAWINGS.
- 5 GAS METER
- 6 SWITCH GEAR. PAINT TO MATCH WALL.
- 7 TOWER AND FINISH PANEL SYSTEM BY GC. GC TO COORDINATE BLOCKING WITH SIGNAGE VENDOR.
- 8 CO2 FILLER VALVE & COVER. SEE DETAIL 10/A6.1
- 9 PATIO CANOPY BY SIGNAGE VENDOR.
- 10 WALL SHALL BE FINISHED PRIOR TO INSTALLATION OF METER.
- 11 CONCRETE CURB.
- 12 SCUPPER, COLLECTOR, AND VERTICAL DOWNSPOUT 6" MIN. PAINT TO MATCH 1
- 13 EXTERIOR LIGHT FIXTURE. COORDINATE WITH ELECTRICAL DRAWINGS
- 14 FLASHING AT STOREFRONT PER G.C. TO MATCH STOREFRONT FINISH. SEE 8/A6.4
- 15 HOSE BIB BOX AT 18" A.F.F. SEE DETAIL 11/A6.1
- 16 KNOX BOX. FINAL LOCATION TO BE APPROVED BY LOCAL AUTHORITY HAVING JURISDICTION
- 17 FIREPLACE.
- 18 SOLAR PANELS BY SIGNAGE VENDOR.
- 19 DASHED LINE INDICATES MECHANICAL EQUIPMENT ON ROOF BEYOND.
- 20 WATER TABLE PAINT LINE SHALL OCCUR AT 3'-0" AFF OR CLOSEST FULL PANEL/PLANK TRANSITION.

SYMBOL	AREA	MANUFACTURER	MATERIAL SPEC	COLOR	ALTERNATE MFR.	ALTERNATE MATERIAL SPEC.	ALTERNATE MATERIAL COLOR	CONTACT INFORMATION
1	TOWER & ENTRY PANELS	TRESPA	METEON	NW17 MILANO GRIGIO				BY SIGN VENDOR
2	EXTERIOR FIBER CEMENT PANELS	JAMES HARDIE	ARTISAN V RUSTIC	PAINTED SW7103 WHITETAIL	NICHIHA	ILLUMINATION	PAINTED SW7103 WHITETAIL	NICHIHA: MATT STEPHENSON 770-789-8228 MSTEPHENSON@NICHIHA.COM
3	EXTERIOR FIBER CEMENT TRIM BOARD - 1X12	JAMES HARDIE	ARTISAN	PAINTED SW7103 WHITETAIL	NICHIHA	NICHITRIM	PAINTED SW7103 WHITETAIL	HARDIE: LEVI STAUFFER 562-243-8974 LEVI.STAUFFER@JAMESHARDIE.COM
4	STOREFRONT WINDOWS	OLD CASTLE	SERIES 5100 - CENTER SET	DK BRONZE	-	-	-	
5	STOREFRONT DOORS	OLD CASTLE	SERIES MSD-375 / WSD-500	DK BRONZE	-	-	-	
6	METAL CANOPIES	EVERBRITE	BY SIGNAGE VENDOR	DARK BRONZE TO MATCH STOREFRONT		RAL	RAL	
7	EXTERIOR HOLLOW METAL SERVICE DOOR			SW7026 GRIFFIN				
8	EXTERIOR FIBER CEMENT	JAMES HARDIE	ARTISAN V RUSTIC	PAINTED SW7026 GRIFFIN	NICHIH	ILLUMINATION	PAINTED SW7026 GRIFFIN	

EXTERIOR FINISH SCHEDULE N.T.S. **D**

ELEVATION KEYNOTES N.T.S. **B**

NO.	REVISION
D	8/17/2018 CLIENT REVISIONS
C	8/17/2018 PLANNING REVISIONS
A	06/06/18 CLIENT REVISIONS
	04/06/18 ISSUED FOR PERMIT
	07/25/18 ISSUED FOR BID

CONTRACT DATE: 01.08.18
BUILDING TYPE: T40CAL-SOL
PLAN VERSION: FEB 2018
BRAND DESIGNER: GPD GROUP
SITE NUMBER: 312032
STORE NUMBER: 2018088.03

TACO BELL
5070 W. ATLANTIC BLVD.
DELRAY BCH, FL 33484



T40
OPEN KITCHEN
CALIFORNIA SOL

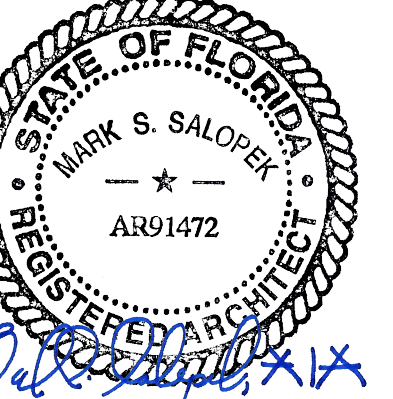
EXTERIOR ELEVATIONS

A4.0

PLOT DATE: 8/17/2018 9:34:12 AM

Mark S. Salopek, LLC

3638 West Galloway Drive
Richfield, OH 44286
330.572.2100 Fax: 330.572.2102



08/17/18

D	8/17/2018	CLIENT REVISIONS
C	8/17/2018	PLANNING REVISIONS
A	06/06/18	CLIENT REVISIONS
	04/06/18	ISSUED FOR PERMIT
	07/25/18	ISSUED FOR BID

CONTRACT DATE: 01.08.18
BUILDING TYPE: T40M-O
PLAN VERSION: FEB 2018
BRAND DESIGNER: GPD GROUP
SITE NUMBER: 312032
STORE NUMBER: 2018088.03

TACO BELL
5070 W. ATLANTIC BLVD.
DELRAY BCH, FL 33484

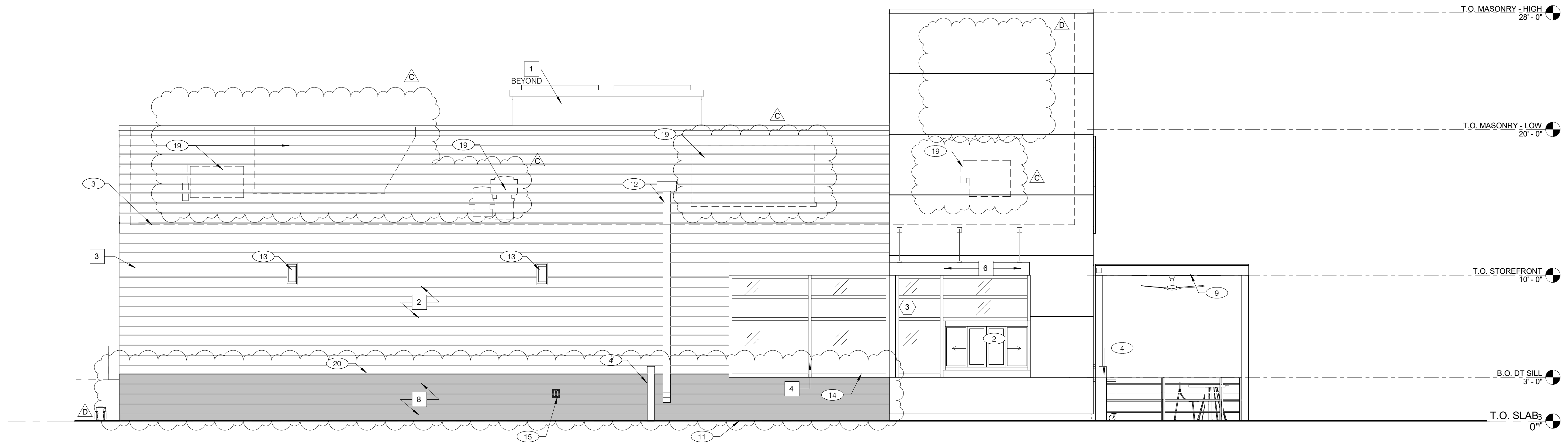


T40
OPEN KITCHEN
CALIFORNIA SOL

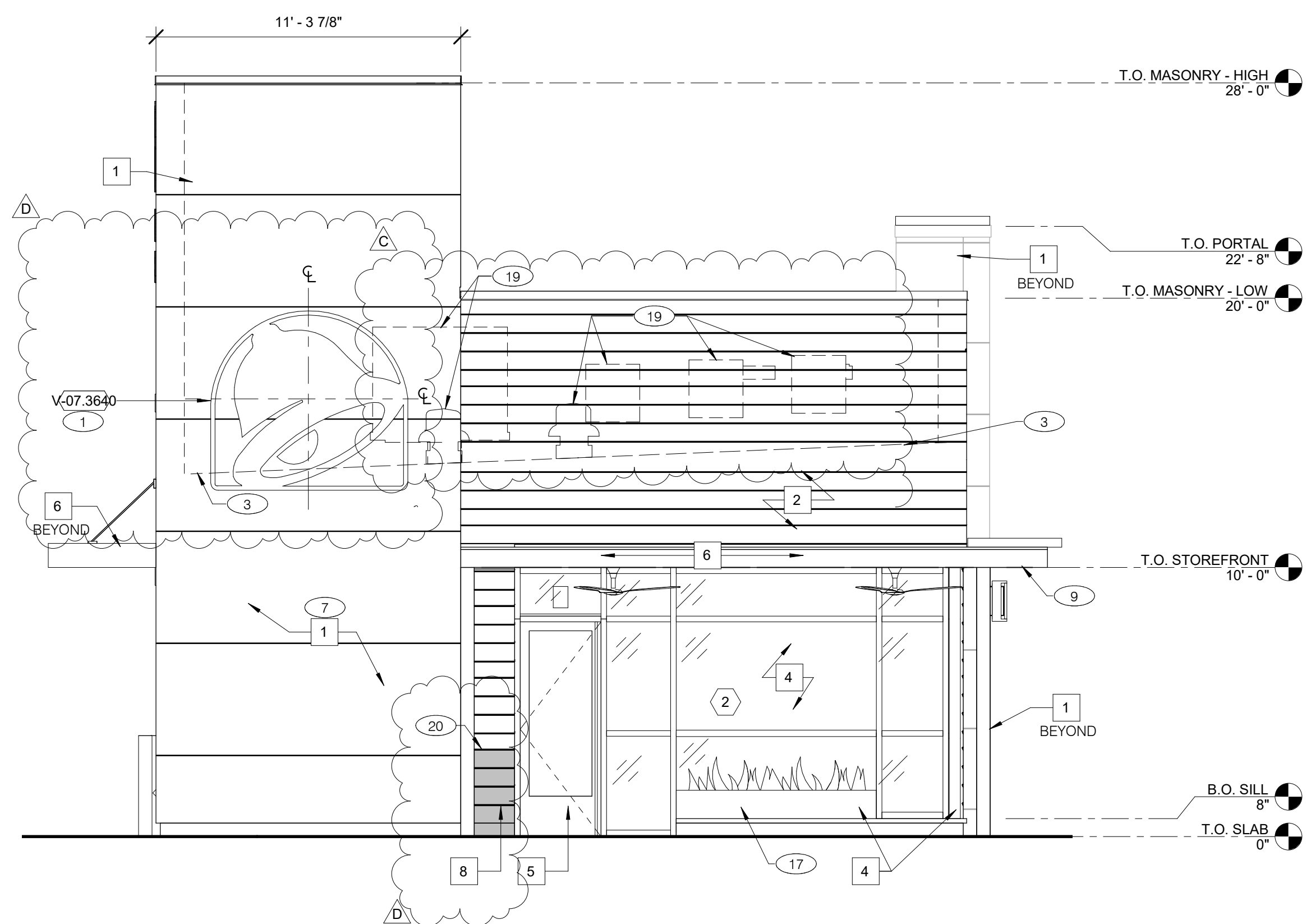
EXTERIOR ELEVATIONS

A4.1

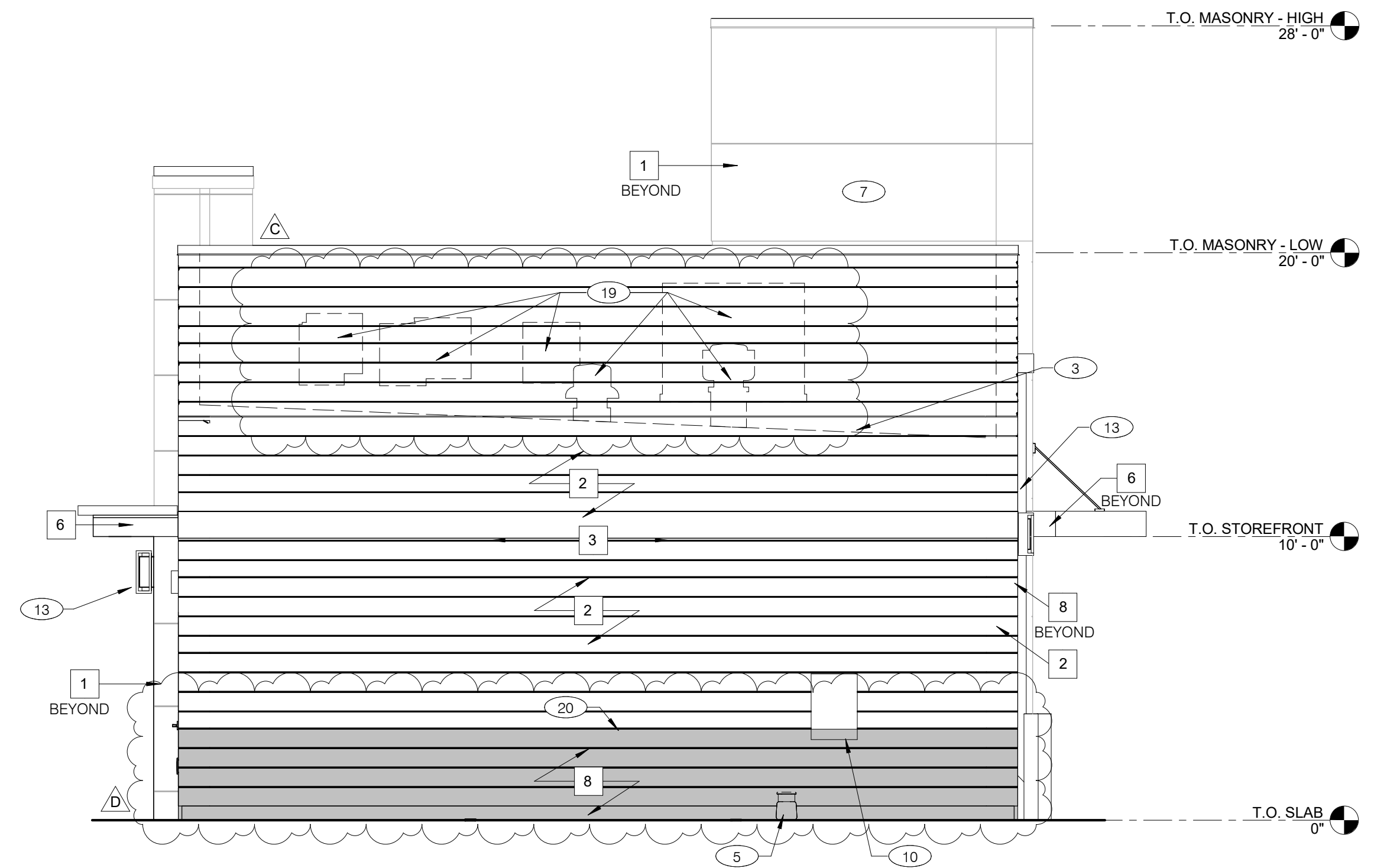
PLOT DATE: 8/17/2018 9:37:51 AM



EAST ELEVATION 1/4" = 1'-0" **A**



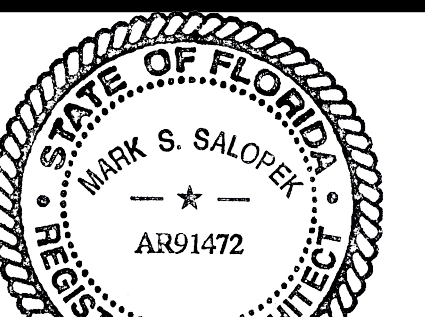
NORTH ELEVATION 1/4" = 1'-0" **C**



SOUTH ELEVATION 1/4" = 1'-0" **B**

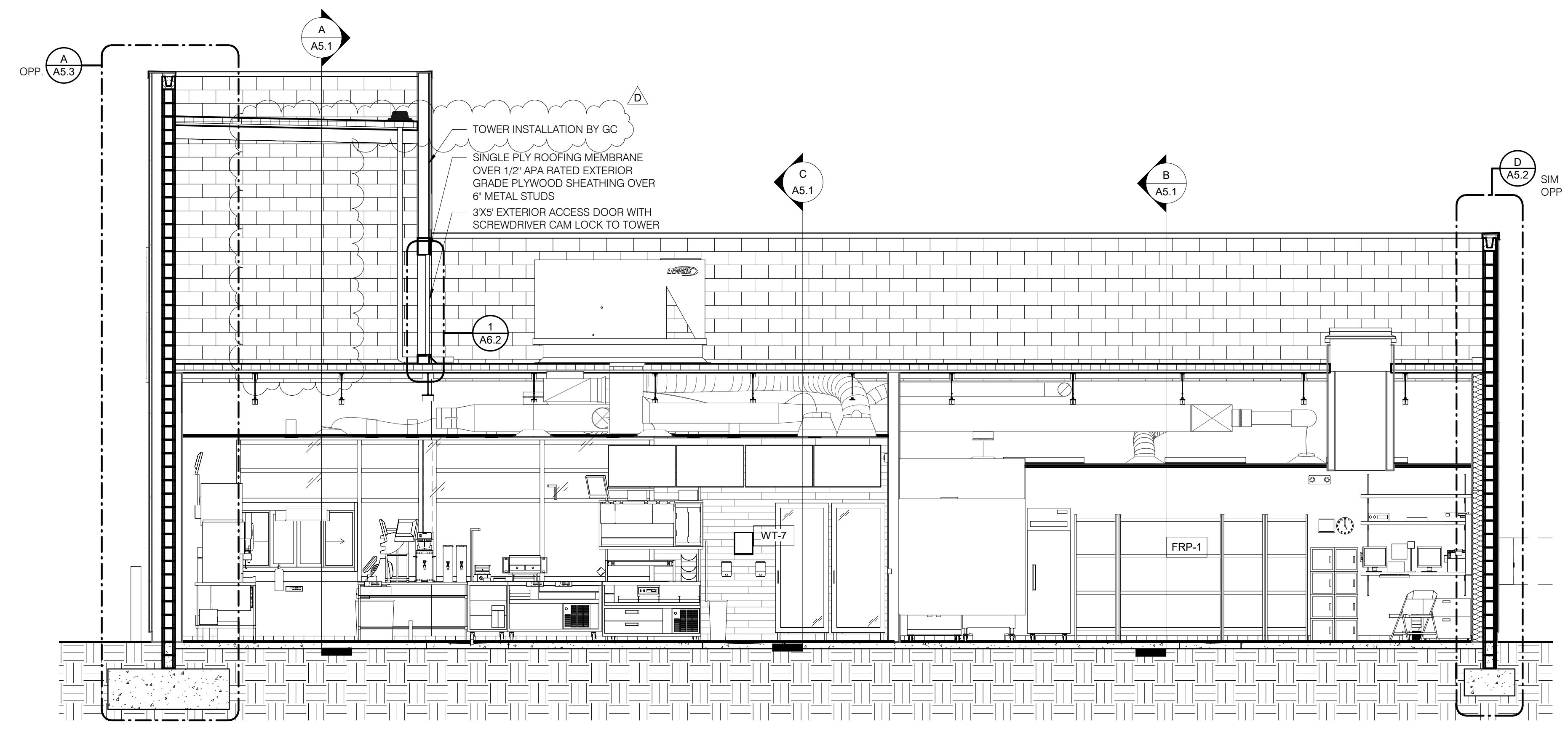
Mark S. Salopek, LLC

3638 West Galloway Drive
 Richfield, OH 44286
 330.572.2100 Fax: 330.572.2102

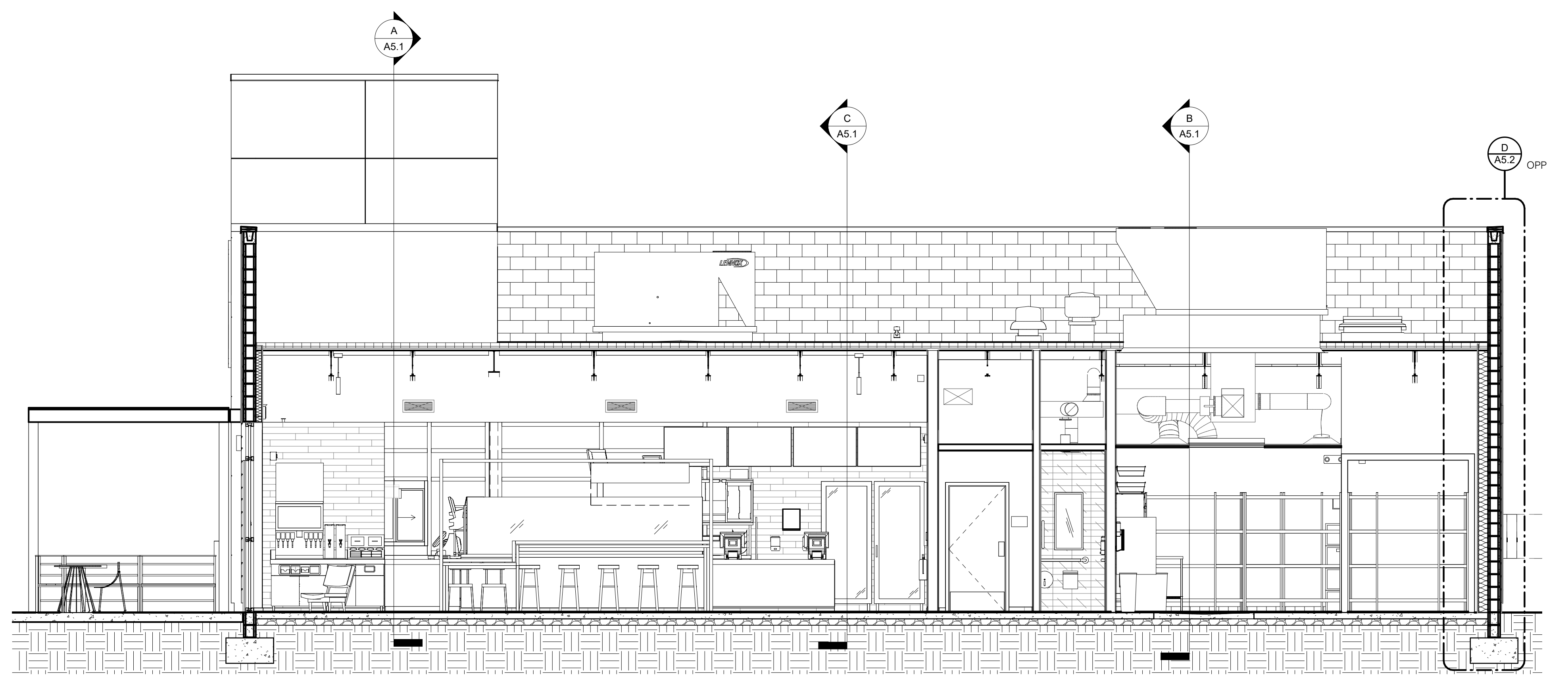


Mark S. Salopek

08/17/18



NORTH/SOUTH BUILDING SECTION 2 1/4" = 1'-0" **A**



NORTH/SOUTH BUILDING SECTION 1 1/4" = 1'-0" **B**

D	8/17/2018	CLIENT REVISIONS
B	07/25/18	CITY COMMENTS
	04/06/18	ISSUED FOR PERMIT
	07/25/18	ISSUED FOR BID

CONTRACT DATE: 01.08.18
 BUILDING TYPE: T40M-O
 PLAN VERSION: FEB 2018
 BRAND DESIGNER: GPD GROUP
 SITE NUMBER: 312032
 STORE NUMBER: 2018088.03

TACO BELL
 5070 W. ATLANTIC BLVD.
 DELRAY BCH, FL 33484

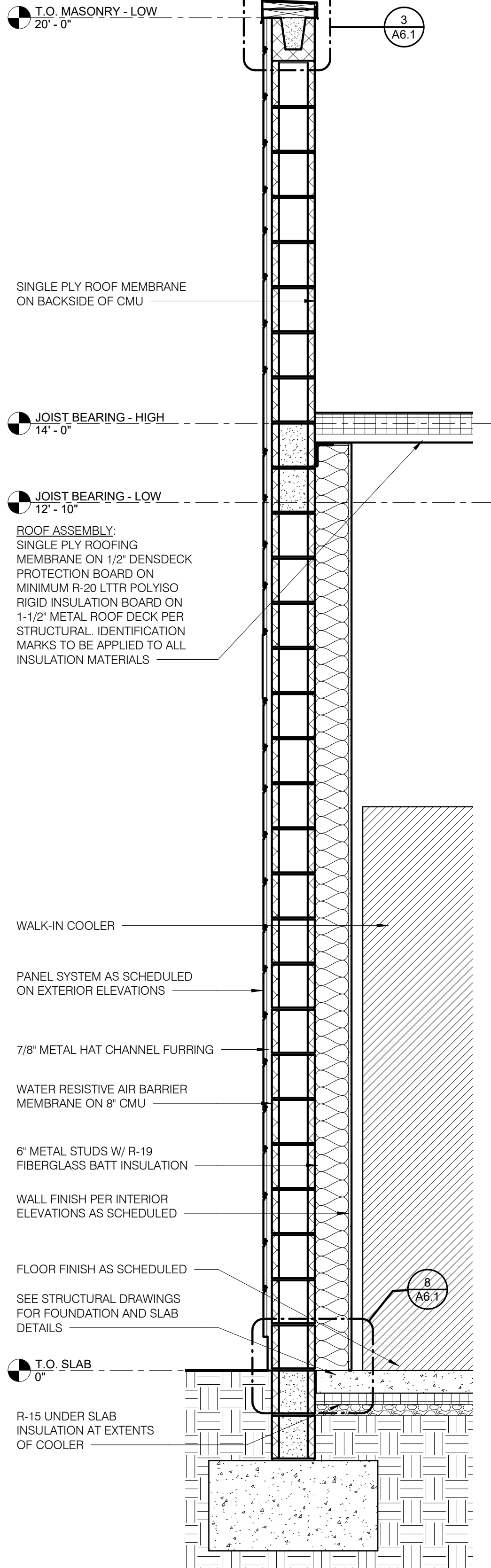


T40
 OPEN KITCHEN
 CALIFORNIA SOL

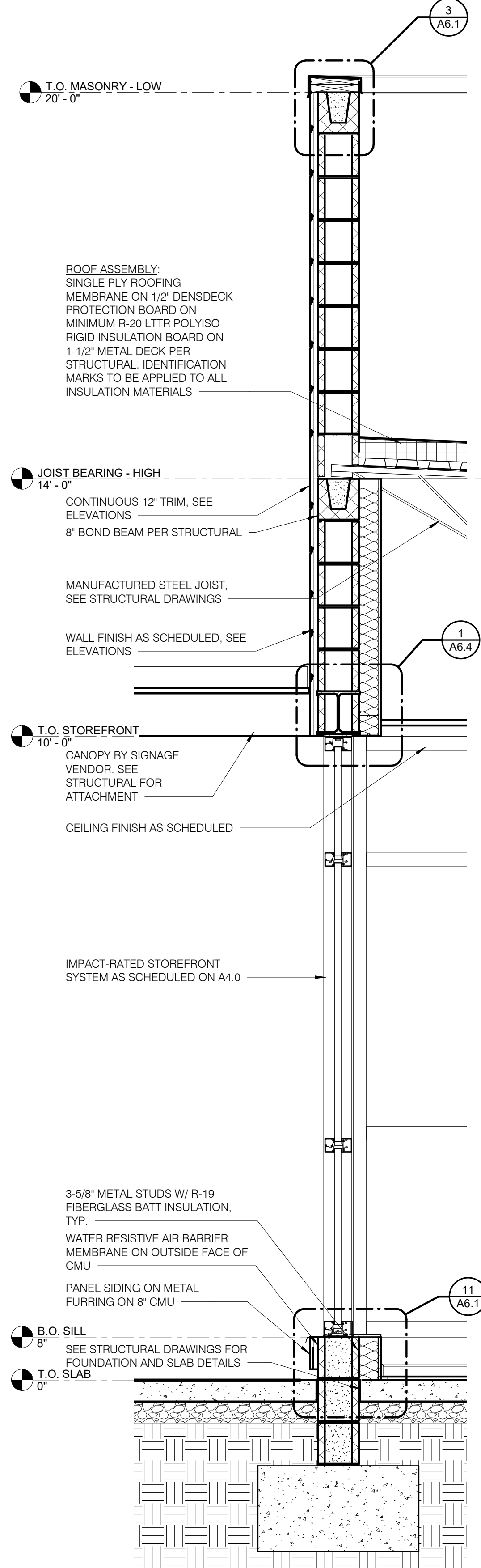
BUILDING SECTIONS

A5.0

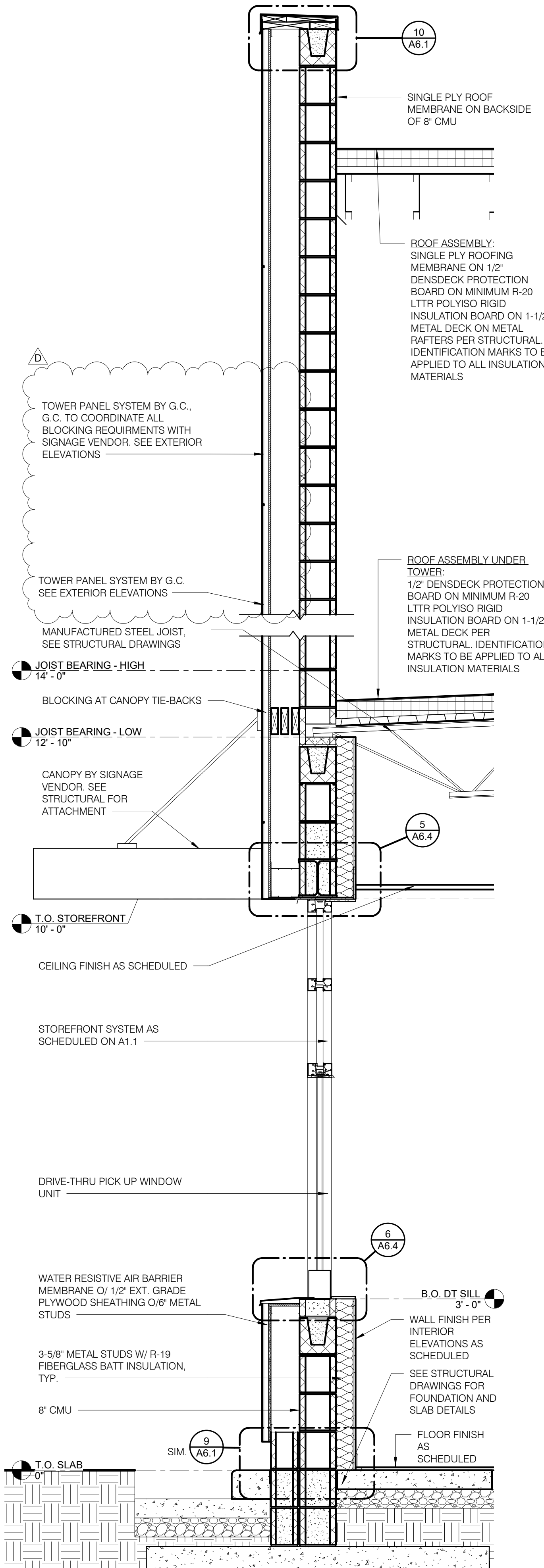
PLOT DATE: 8/17/2018 9:38:53 AM



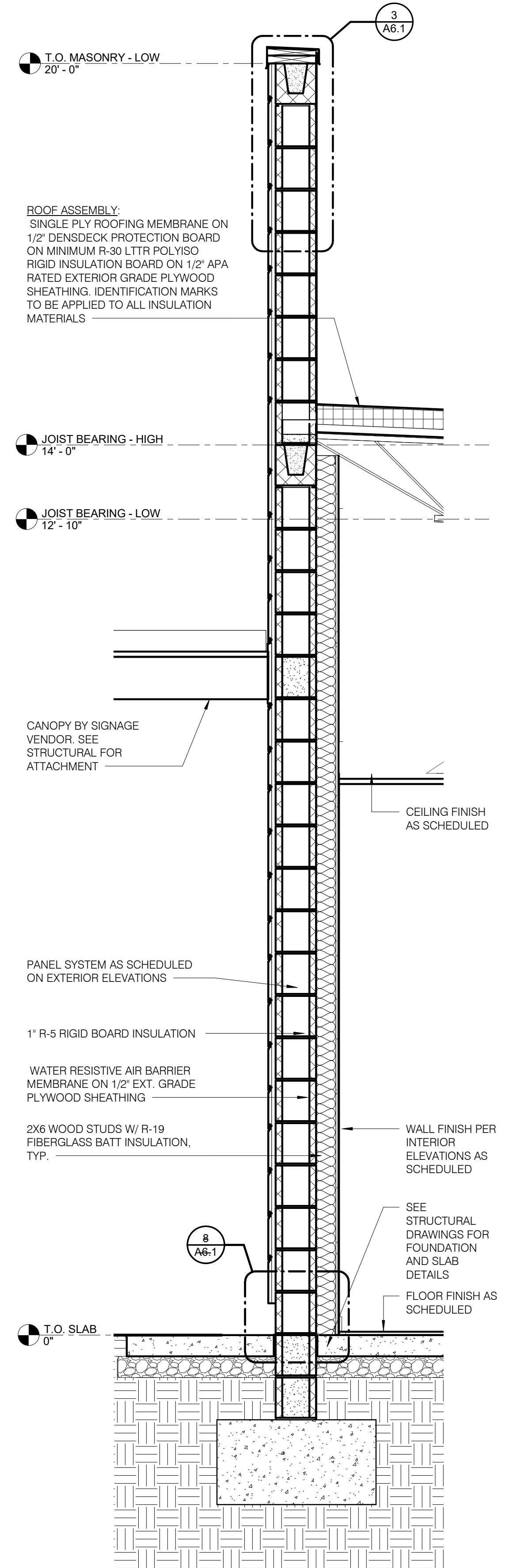
WALL SECTION AT COOLER WALL 3/4" = 1'-0" **D**



WALL SECTION AT DINING WINDOWS 3/4" = 1'-0" **C**

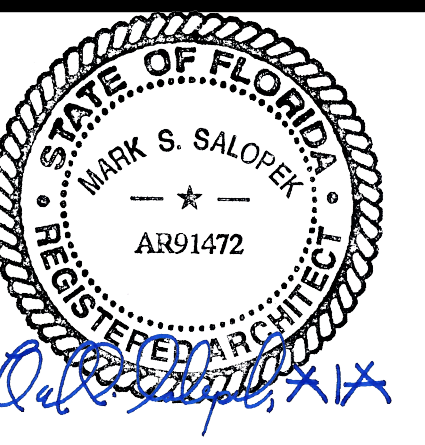


WALL SECTION AT DRIVE THRU WINDOW 3/4" = 1'-0" **B**



TYPICAL WALL SECTION 3/4" = 1'-0" **A**

Mark S. Salopek, LLC
 3638 West Galloway Drive
 Richfield, OH 44286
 330.572.2100 Fax: 330.572.2102



08/17/18

CLIENT REVISIONS	
04/06/18	ISSUED FOR PERMIT
07/25/18	ISSUED FOR BID

CONTRACT DATE: 01.08.18
 BUILDING TYPE: T40M-O
 PLAN VERSION: FEB 2018
 BRAND DESIGNER: GPD GROUP
 SITE NUMBER: 312032
 STORE NUMBER: 201808.03

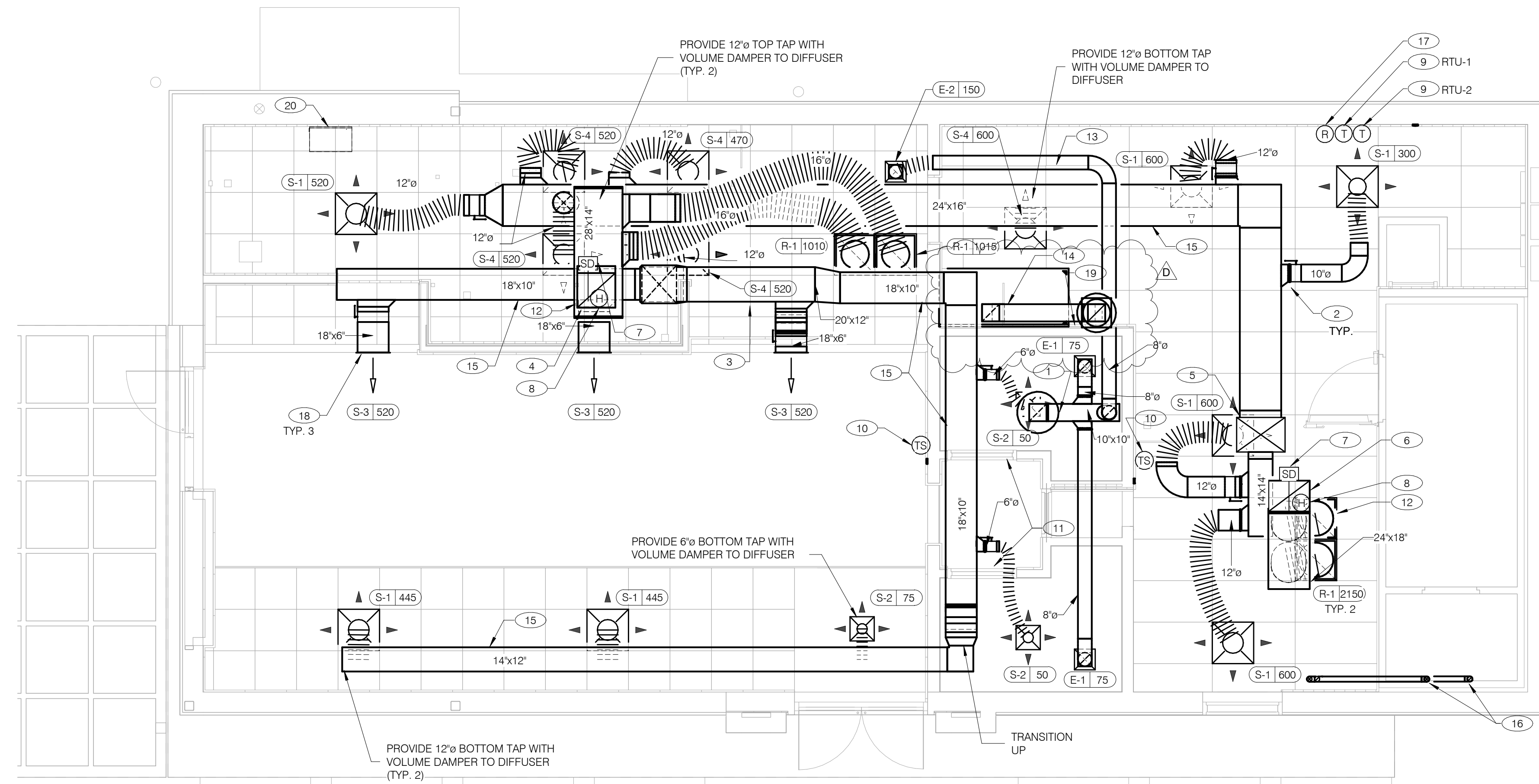
TACO BELL
 5070 W. ATLANTIC BLVD.
 DELRAY BCH, FL 33484



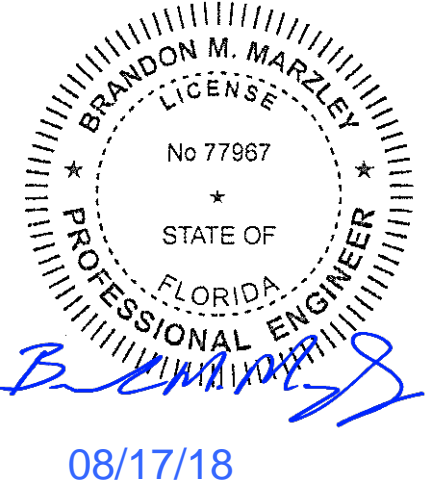
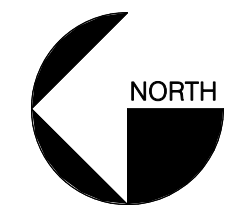
WALL SECTIONS

A5.2

PLOT DATE: 8/17/2018 9:39:26 AM



COVER ALL HVAC DUCT SYSTEMS OPENINGS TO PROTECT FROM CONSTRUCTION DUST AND DEBRIS UNTIL CONSTRUCTION IS COMPLETE. IF THE HVAC SYSTEM IS OPERATED BEFORE CONSTRUCTION IS COMPLETE, PROVIDE MERV8 FILTERS AT ALL AIR INTAKES INSIDE THE BUILDING.



08/17/18

DATE	REVISIONS
08.17.18	CLIENT REVISIONS
06.06.18	CLIENT REVISIONS
04.06.18	ISSUED FOR PERMIT
07.25.18	ISSUED FOR BID

CONTRACT DATE:	01.08.18
BUILDING TYPE:	T40M-O
PLAN VERSION:	FEB 2018
BRAND DESIGNER:	GPD GROUP
SITE NUMBER:	312032
STORE NUMBER:	2018088.03

TACO BELL
5070 W ATLANTIC BLVD.
DELRAY BCH, FL 33484



DUCT AND DIFFUSER PLAN

M2.0

PLOT DATE: 8/17/2018 9:45:02 AM

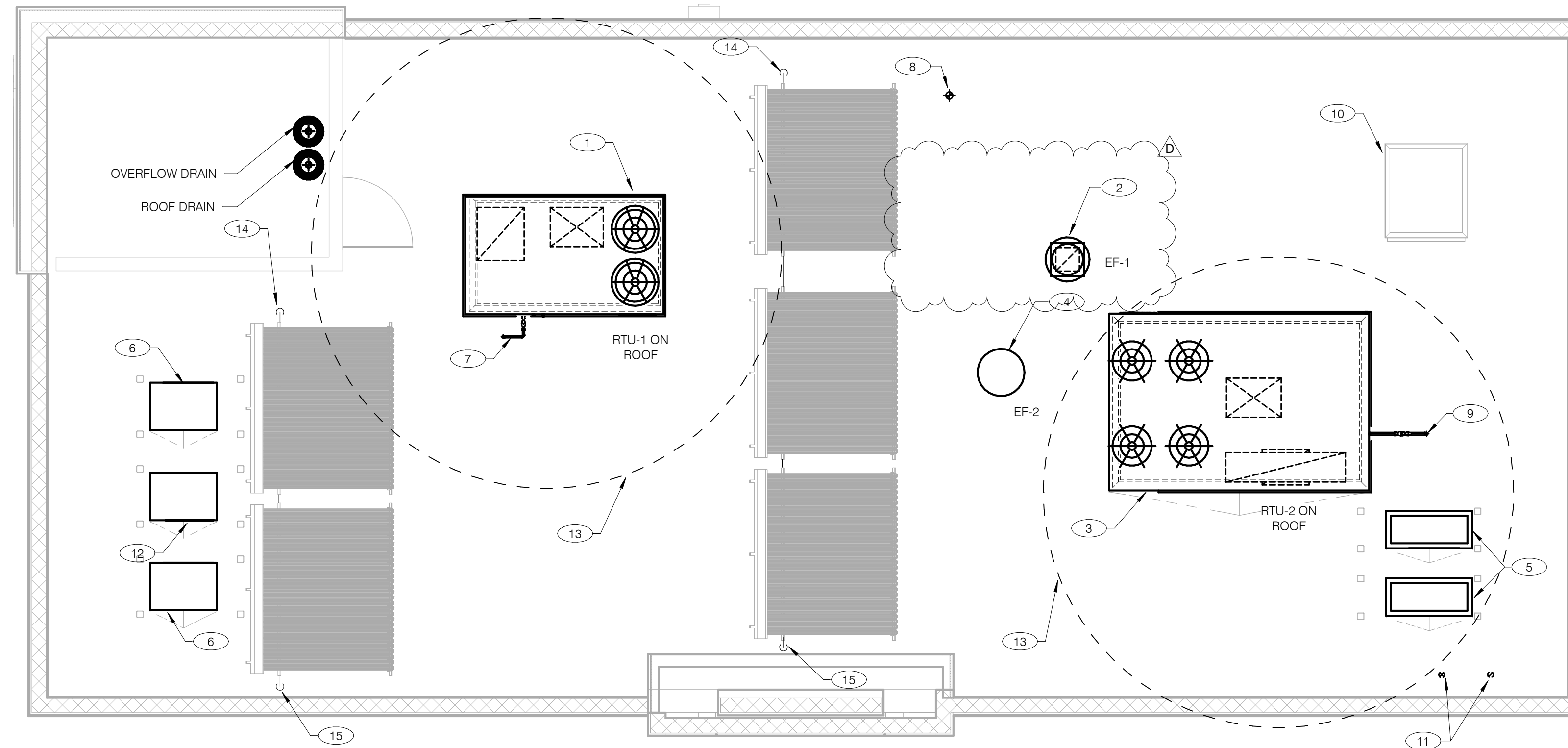
DUCT AND DIFFUSER PLAN 1/4" = 1'-0" **A**

- 1 10x10 EXHAUST AIR DUCT UP TO EF-2.
- 2 SEE DETAIL 4 ON DRAWING M4.0 FOR SUPPLY AIR TAKE-OFF TO CEILING DIFFUSERS AND GRILLES.
- 3 EXTEND FULL SIZE SUPPLY DUCT DROP WITH FLEX CONNECTION TO RTU-1.
- 4 DUCT TRANSITION FROM MAIN RETURN PLENUM TO 22"x18" RETURN AIR DUCT. CONNECT TO RETURN AIR PLENUM AT ROOFTOP UNIT RTU-1 WITH FLEX CONNECTION.
- 5 EXTEND FULL SIZE SUPPLY PLENUM WITH FLEX CONNECTION TO RTU-2.
- 6 EXTEND FULL SIZE RETURN DUCT DROP WITH FLEX CONNECTION TO RTU-2.
- 7 FURNISH AND INSTALL SMOKE DETECTOR IN THE RETURN AIR DUCT, IN ACCORDANCE WITH LOCAL CODES. DUCT SMOKE DETECTOR WIRED BY ELECTRICAL CONTRACTOR, SEE SHEET E3.2.
- 8 HUMIDITY SENSOR (REMOTE). HUMIDITY SENSOR LOCATION SHALL BE PLACED IN RETURN AIR DUCTWORK.
- 9 LOCATE THERMOSTAT CONTROLS ON WALL IN OFFICE AT 48" A.F.F. COORDINATE LOCATION WITH LIGHT SWITCHES AND OTHER WALL MOUNTED ACCESSORIES.
- 10 MOUNT THERMOSTAT REMOTE SENSOR AT 60" ABOVE FINISHED FLOOR.
- 11 UNDERCUT RESTROOM DOORS MINIMUM 3/4" FOR MAKE-UP AIR.
- 12 RUN DUCTWORK BETWEEN JOISTS AS HIGH AS POSSIBLE. COORDINATE ACTUAL DUCT ROUTING WITH FINAL TRUSS SPACING AND LOCATIONS.
- 13 RUN DUCT THROUGH OPEN WEBBING OF ROOF JOISTS (WHERE POSSIBLE). COORDINATE WITH TRUSS DESIGN PRIOR TO DUCTWORK FABRICATION.
- 14 10"x10" EXHAUST AIR DUCT DOWN FROM EF-1 AND TRANSITION TO FIELD OUT EXHAUST CONNECTION AT HOOD. EXHAUST DUCT SHALL BE ROUTED THROUGH WEBBING OF JOISTS TO CONNECT TO HOOD COLLAR. SEE HOOD DETAILS ON DRAWING M3.0. SEE DETAIL 10 ON SHEET M4.0 FOR FIRE PROTECTION OF DUCT WORK. SEE DETAIL 6 ON SHEET M4.0 FOR EXHAUST DUCT TRANSITION.
- 15 RUN MAIN SUPPLY DUCT UNDER BOTTOM OF JOIST. COORDINATE ACTUAL DUCT ROUTING WITH FINAL CEILING HEIGHT.
- 16 FURNISH AND INSTALL 3" PVC WATER HEATER INTAKE AND FLUE VENT TERMINATION ON ROOF. COORDINATE WORK WITH ALL TRADES.
- 17 NEW SMOKE DETECTOR RESET SWITCH WITH KEY. MFR. IS 'SYSTEM SENSOR' MODEL # RTS151 KEY. MOUNT NEXT TO THERMOSTATS @ 48" A.F.F. - INSTALL PER MFR. SPECIFICATIONS.
- 18 INSTALL SIDE-WALL MOUNTED GRILLE AT APPROXIMATELY 10'-8" A.F.F. CONNECT GRILLE TO SUPPLY DUCT AND PROVIDE WITH VOLUME DAMPER AT CONNECTION POINT TO MATCH ADJACENT CONDITIONS.
- 19 CONTRACTOR TO INSTALL FIRE SUPPRESSION CABINET ON EXHAUST HOOD. CONTRACTOR TO PROVIDE ALL NECESSARY PIPING, FITTINGS, AND ACCESSORIES TO MAKE FINAL CONNECTION AT HOOD. FIELD VERIFY EXACT LOCATION OF FIRE SUPPRESSION CABINET.
- 20 CONTRACTOR TO PROVIDE AND INSTALL AIR CURTAIN IN LOCATION AS SHOWN ON PLAN. MOUNT AIR CURTAIN ON MULLION DIRECTLY ABOVE SERVICE OPENING DOORS AT DRIVE-THRU WINDOW. PROVIDE BERNER MODEL DTU03-2026A AT 120/1/60. REFER TO MANUFACTURERS INSTALLATION INSTRUCTIONS FOR MORE DETAILS.

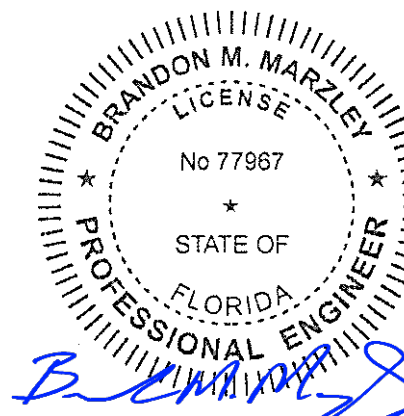
1. DINING ROOM LIGHT FIXTURE LOCATIONS ARE CRITICAL. COORDINATE DUCTWORK LOCATIONS SO AS NOT TO CONFLICT WITH LIGHT FIXTURE LOCATIONS.
2. THERMOSTATS SHALL BE PROGRAMMABLE THERMOSTAT WITH SUBBASE. REMOTE TEMPERATURE SENSOR, AND REMOTE HUMIDITY SENSOR.
3. HUMIDITY SENSOR APPLICATION IS VARIABLE PER SITE SPECIFIC CONDITIONS. REFER TO HVAC UNIT SCHEDULE, 1/M1.0, FOR APPLICATION CONDITIONS. COORDINATE DUCTWORK LOCATIONS WITH LIGHTING AND STRUCTURAL.
4. NO FLEX DUCT ALLOWED ON EXHAUST SYSTEMS.
5. HVAC TEST AND BALANCE. CONTRACTOR TO CONTACT ONE OF THE FOLLOWING COMPANIES TO PERFORM THE HVAC AIR BALANCE.
 - TEST AND BALANCE CORP.
MISTY CRIDER
(678) 393-9401 EXT. 2237
isextorkeeton@tabonline.com
 - MELINK CORP.
JENNIFER JACKSON
(513) 393-9401 EXT. 2237
kjohnson@melinkcorp.com
 - AIR CARE EXPERTS
CHUCK McCABE
cmccabe@ace-iaq.com

GENERAL NOTES - MECHANICAL NTS **C**

KEYNOTES - DUCT AND DIFFUSER NTS **B**



COVER ALL HVAC DUCT SYSTEMS OPENINGS TO PROTECT FROM CONSTRUCTION DUST AND DEBRIS UNTIL CONSTRUCTION IS COMPLETE. IF THE HVAC SYSTEM IS OPERATED BEFORE CONSTRUCTION IS COMPLETE, PROVIDE MERV8 FILTERS AT ALL AIR INTAKES INSIDE THE BUILDING.



08/17/18

D	08.17.18	CLIENT REVISIONS
A	06.06.18	CLIENT REVISIONS
	04.06.18	ISSUED FOR PERMIT
	07.25.18	ISSUED FOR BID

CONTRACT DATE:	01.08.18
BUILDING TYPE:	T40M-O
PLAN VERSION:	FEB 2018
BRAND DESIGNER:	GPD GROUP
SITE NUMBER:	312032
STORE NUMBER:	2018088.03

TACO BELL
5070 W ATLANTIC BLVD.
DELRAY BCH, FL 33484



T40
OPEN KITCHEN
CALIFORNIA SOL

MECHANICAL ROOF PLAN

M2.1

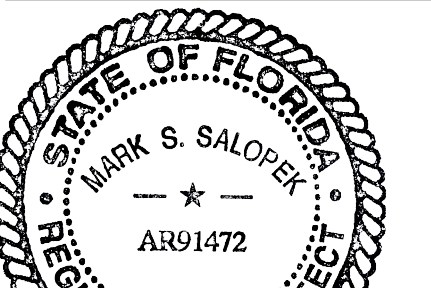
PLOT DATE: 8/17/2018 9:45:38 AM

MECHANICAL ROOF PLAN 1/4" = 1'-0" **A**

- | | |
|---|---|
| <ul style="list-style-type: none"> 1 CONTRACTOR TO PROVIDE AND INSTALL RTU-1 IN LOCATION AS SHOWN ON PLANS. COORDINATE EXACT RTU LOCATION AND DUCT DROPS WITH STRUCTURAL TRUSS LAYOUT. 2 CONTRACTOR TO PROVIDE AND INSTALL TYPE I EXHAUST FAN (EF-1) IN LOCATION AS SHOWN PLANS. CONNECT 10"x10" EXHAUST DUCT FROM EXHAUST HOOD UP TO EF-1 ON ROOF. COORDINATION EXHAUST DUCT ROUTING WITH STRUCTURAL TRUSS LAYOUT. 3 CONTRACTOR TO PROVIDE AND INSTALL RTU-2 IN LOCATION AS SHOWN ON PLANS. COORDINATE EXACT RTU LOCATION AND DUCT DROPS WITH STRUCTURAL TRUSS LAYOUT. 4 CONTRACTOR TO PROVIDE AND INSTALL TYPE II EXHAUST FAN (EF-2) IN LOCATION AS SHOWN PLANS. CONNECT 10"x10" EXHAUST DUCT FROM RESTROOM EXHAUST GRILLES TO EF-2 ON ROOF. COORDINATION EXHAUST DUCT ROUTING WITH STRUCTURAL TRUSS LAYOUT. 5 CONDENSING UNIT SERVING WALK-IN COOLER/FREEZER. COORDINATE EXACT LOCATION WITH ROOF LAYOUT. CONTRACTOR TO FIELD VERIFY EXACT REFRIGERANT PIPING. PROVIDE ALL NECESSARY PIPING ACCESSORIES INCLUDING PIPING INSULATION AND INSTALL ON APPROPRIATE EQUIPMENT SUPPORTS. 6 CONDENSING UNIT SERVING ICE MAKER. COORDINATE EXACT LOCATION WITH ROOF LAYOUT. CONTRACTOR TO FIELD VERIFY EXACT REFRIGERANT PIPING. PROVIDE ALL NECESSARY PIPING ACCESSORIES INCLUDING PIPING INSULATION AND INSTALL ON APPROPRIATE EQUIPMENT SUPPORTS. 7 1" GAS PIPING UP THROUGH ROOF FROM BELOW. CONTRACTOR TO ROUTE GAS PIPING ON ROOF AND PROVIDE PIPING SUPPORTS. CONNECT TO RTU AND PROVIDE WITH SHUT-OFF VALVE AND DIRT LEG. 8 PLUMBING VENT, REFERENCE 1/P2.0. ENSURE AT LEAST A 10'-0" DISTANCE BETWEEN ANY OUTDOOR AIR INTAKES | <ul style="list-style-type: none"> 9 1-1/4" GAS PIPING UP THROUGH ROOF FROM BELOW. CONNECT TO RTU AND PROVIDE WITH SHUT-OFF VALVE AND DIRT LEG. 10 ROOF HATCH. REFER TO ARCHITECTURAL DRAWINGS FOR MORE INFORMATION. 11 FURNISH AND INSTALL 3" PVC WATER HEATER INTAKE AND FLUE VENT TERMINATION ON ROOF. INSTALL IN STRICT ACCORDANCE WITH MANUFACTURER'S REQUIREMENTS. ENSURE AT LEAST A 10'-0" DISTANCE BETWEEN ANY OUTDOOR AIR INTAKES. 12 CONDENSING UNIT SERVING FROZEN BEVERAGE MACHINE. COORDINATE EXACT LOCATION WITH ROOF LAYOUT. CONTRACTOR TO FIELD VERIFY EXACT REFRIGERANT PIPING. PROVIDE ALL NECESSARY PIPING ACCESSORIES INCLUDING PIPING INSULATION AND INSTALL ON APPROPRIATE EQUIPMENT SUPPORTS. 13 MAINTAIN A MINIMUM 10'-0" CLEARANCE TO ANY EXHAUST TERMINATIONS. 14 SOLAR PANEL SUPPLY PIPING UP THRU ROOF. ROOFING CONTRACTOR SHALL MAKE ALL ROOF PENETRATIONS. SEE PLUMBING PLANS FOR CONTINUATION. 15 SOLAR PANEL DOWN PIPING DOWN THRU ROOF. ROOFING CONTRACTOR SHALL MAKE ALL ROOF PENETRATIONS. SEE PLUMBING PLANS FOR CONTINUATION. |
|---|---|

KEYNOTES - ROOF PLAN NTS

B

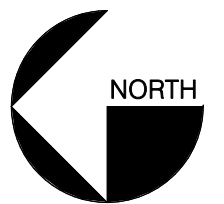
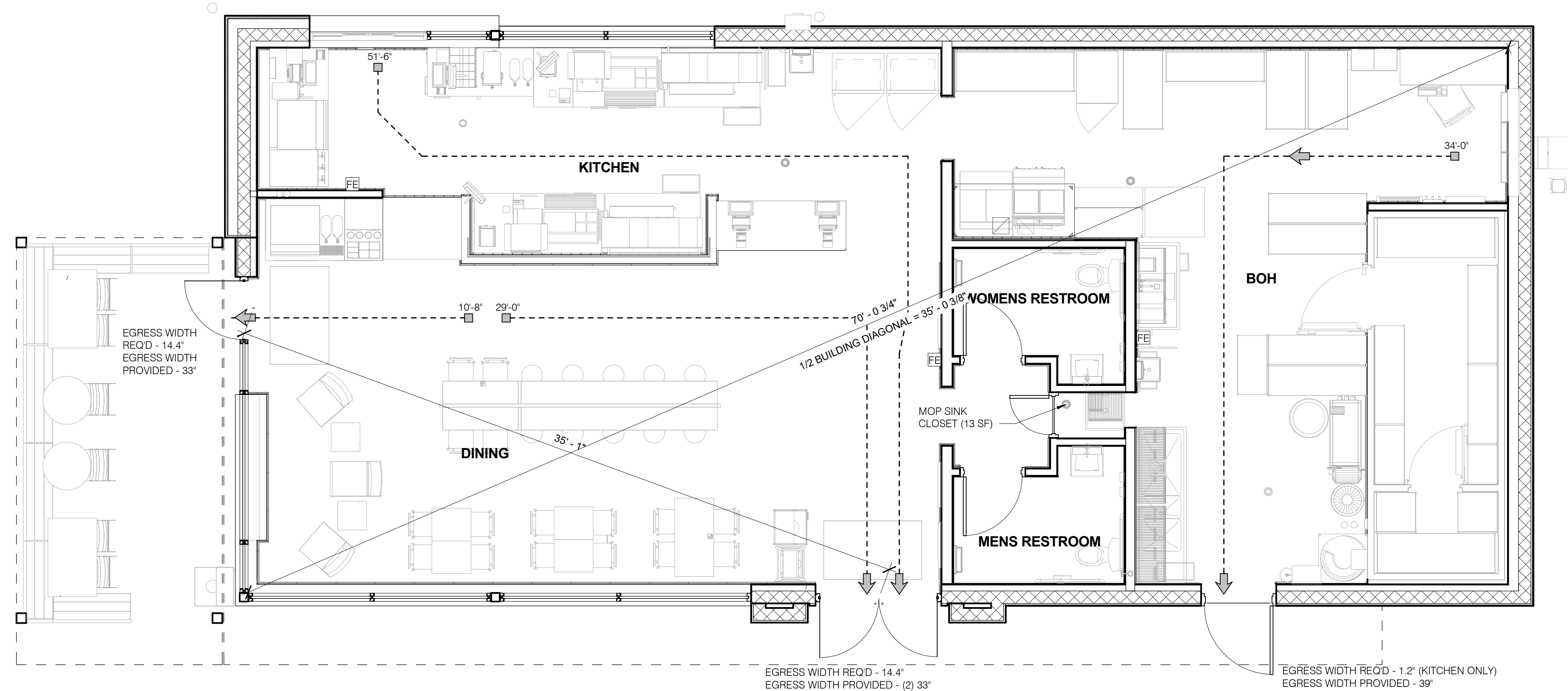


Del. Salopek, AIA

08/17/18

DATE	REVISION
08/17/2018	PLANNING REVISIONS
04/06/18	ISSUED FOR PERMIT
07/25/18	ISSUED FOR BID

CONTRACT DATE:	01.08.18
BUILDING TYPE:	T40CAL-SOL
PLAN VERSION:	FEB 2018
BRAND DESIGNER:	GPD GROUP
SITE NUMBER:	312032
STORE NUMBER:	2018088.03



LIFE SAFETY PLAN 1/4" = 1'-0" **A**

FLORIDA FIRE PREVENTION CODE SIXTH EDITION (2017):

FLORIDA SPECIFIC NFPA 1, FIRE CODE 2015 EDITION

FLORIDA SPECIFIC NFPA 101, LIFE SAFETY CODE, 2015 EDITION

1,974 GROSS SF (BUILDING)

SPACE	AREA	LOAD FACTOR	OCCUPANTS
ASSEMBLY (UNCONCENTRATED)	616 SF	15 NET	42
KITCHEN (COMMERCIAL)	472 SF	200 GROSS	3
STORAGE/MECHANICAL	473 SF	300 GROSS	2
TOTAL	1,561 SF		47 OCCUPANTS

FE FIRE EXTINGUISHER LOCATION.

← EMERGENCY EXIT

- - - ○ TRAVEL DISTANCE

⊗ EXIT SIGNS

FIRE CODE **D** **OCCUPANT LOAD CALCULATIONS** **C**

LIFE SAFETY LEGEND N.T.S. **B**

TACO BELL
5070 W. ATLANTIC BLVD.
DELRAY BCH, FL 33484



LIFE SAFETY PLAN

T2.0