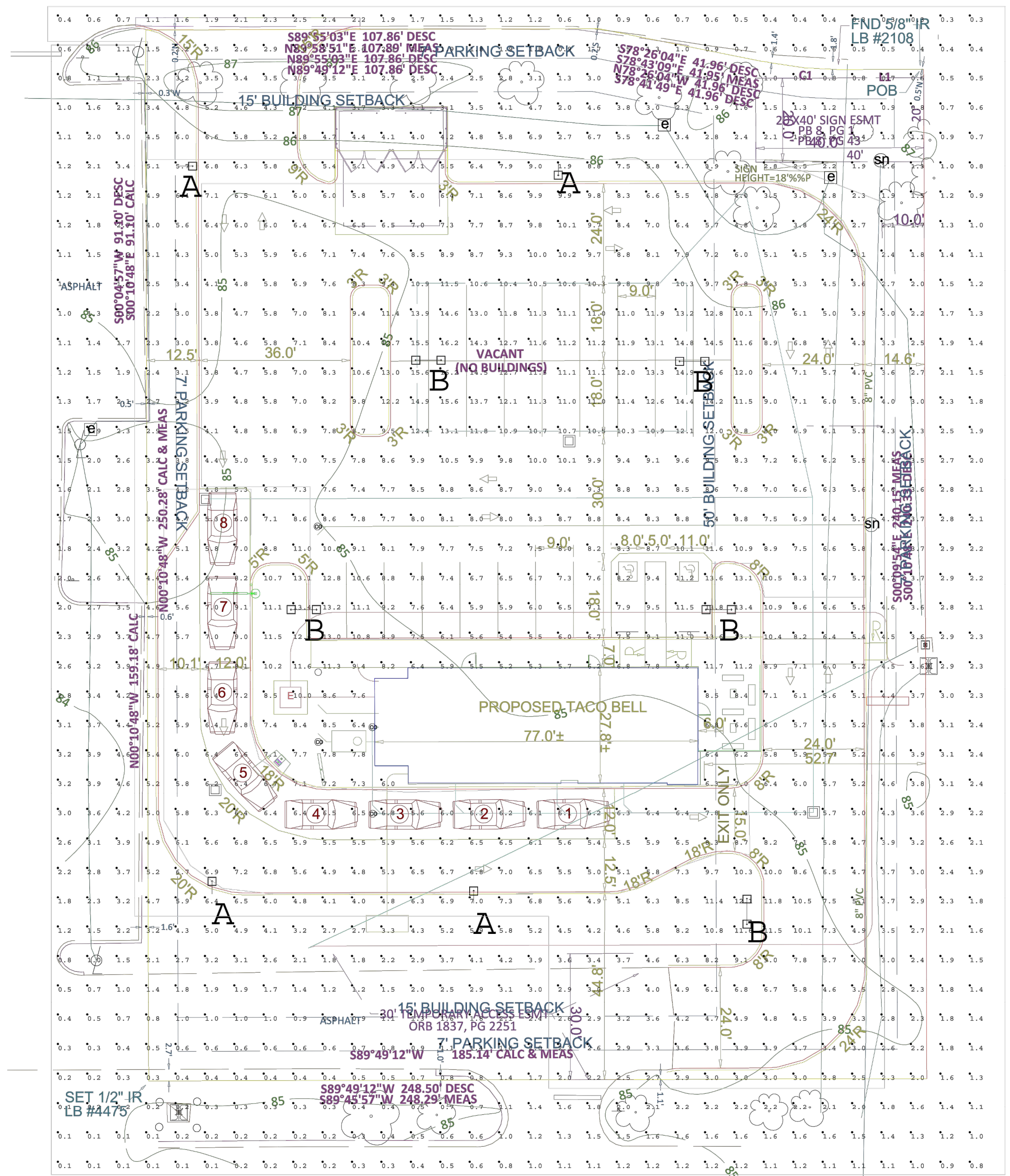




PHOTOMETRICS COMPLETED BY CAPITOL LIGHT  
 LOCATION BUENA VENTURA, FL  
 Please contact Dan Clancy if you would like a quote or to place an order  
 860-520-2395  
 daniel.clancy@capitollight.com



520 South Main Street, Suite 2531  
 Akron, OH 44311  
 330.572.2100 Fax: 330.572.2102



Luminaire Schedule			
Symbol	Qty	Label	Description
+	4	A	XALM-FT-LED-HO-40 MOUNTED AT 25'
-	5	B	XALM-FT-LED-HO-40 MOUNTED AT 25'

Calculation Summary					
Label	Avg	Max	Min	Avg/Min	Max/Min
-	N.A.	N.A.	N.A.	N.A.	N.A.
DRIVE THRU SURFACE	6.34	9.1	4.7	1.35	1.94
EXTENDED	1.94	6.9	0.1	19.40	69.00
PARKING LOT SURFACE	8.52	16.2	3.1	2.75	5.23

Based on the information provided, all dimensions and luminaire locations show represent recommended positions or positions provided by third party. The engineer and/or architect have the sole responsibility to determine applicability of the layout to existing or future field conditions.  
 This lighting pattern represents illumination levels calculated from laboratory data taken under controlled conditions utilizing current industry standard lamp ratings in accordance with IES approved methods. Actual performance of any manufacturer's luminaire may vary due to variation in electrical voltage, tolerance in lamps and other variable field conditions.

ISSUED FOR CONST. 08.09.18  
 CONTRACT DATE: 09.18.17  
 BUILDING TYPE: EXP. LITE MED40  
 PLAN VERSION: July 2017  
 SITE NUMBER: 312536/445270  
 STORE NUMBER: 2017088.45

TACO BELL  
 PARCEL # 012529302500010020  
 BUENAVENTURA BLVD.  
 KISSIMMEE, FL 34743



PHOTOMETRIC PLAN

C-506

PROJECT NO.- SDP17-0154