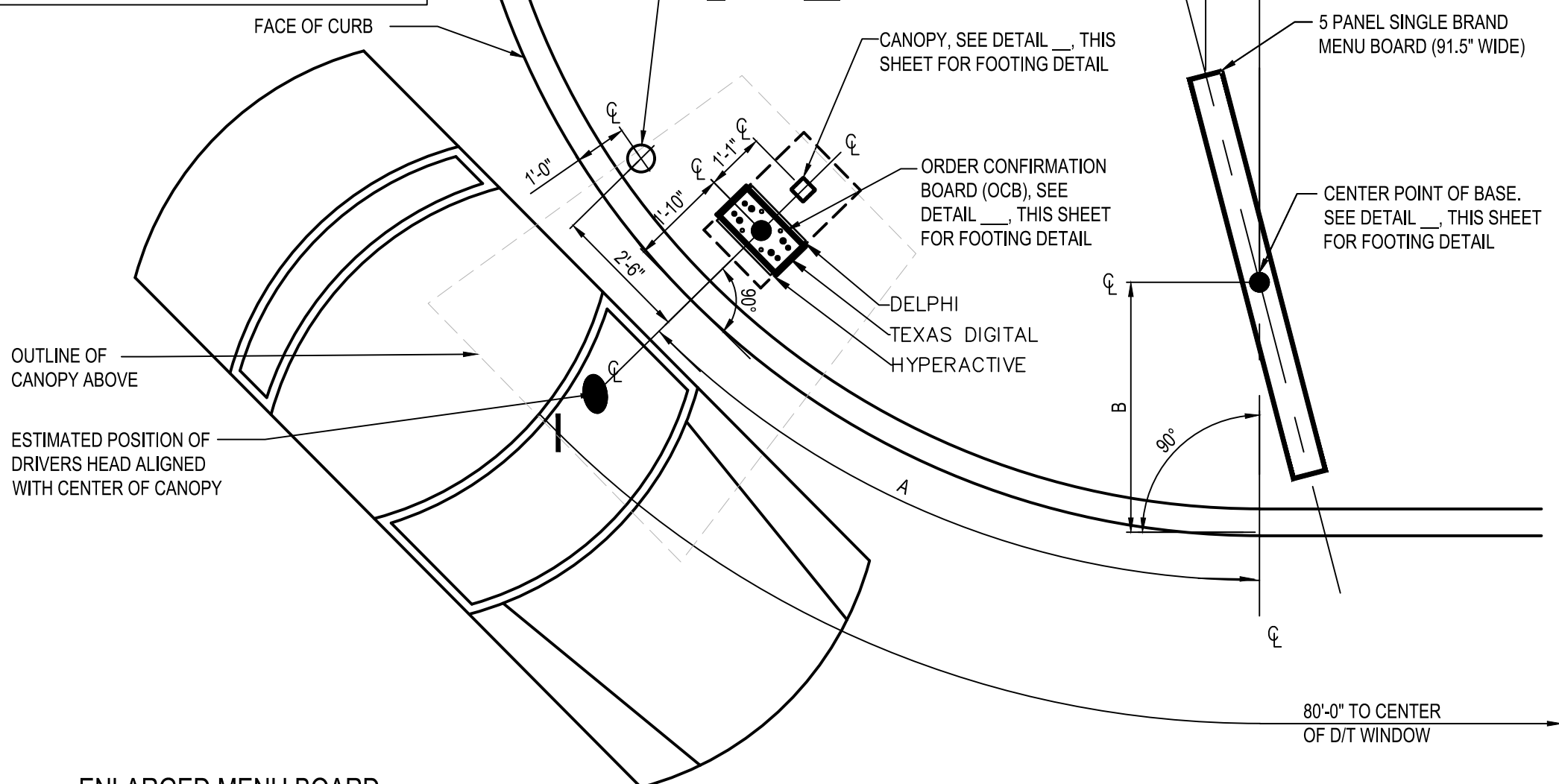


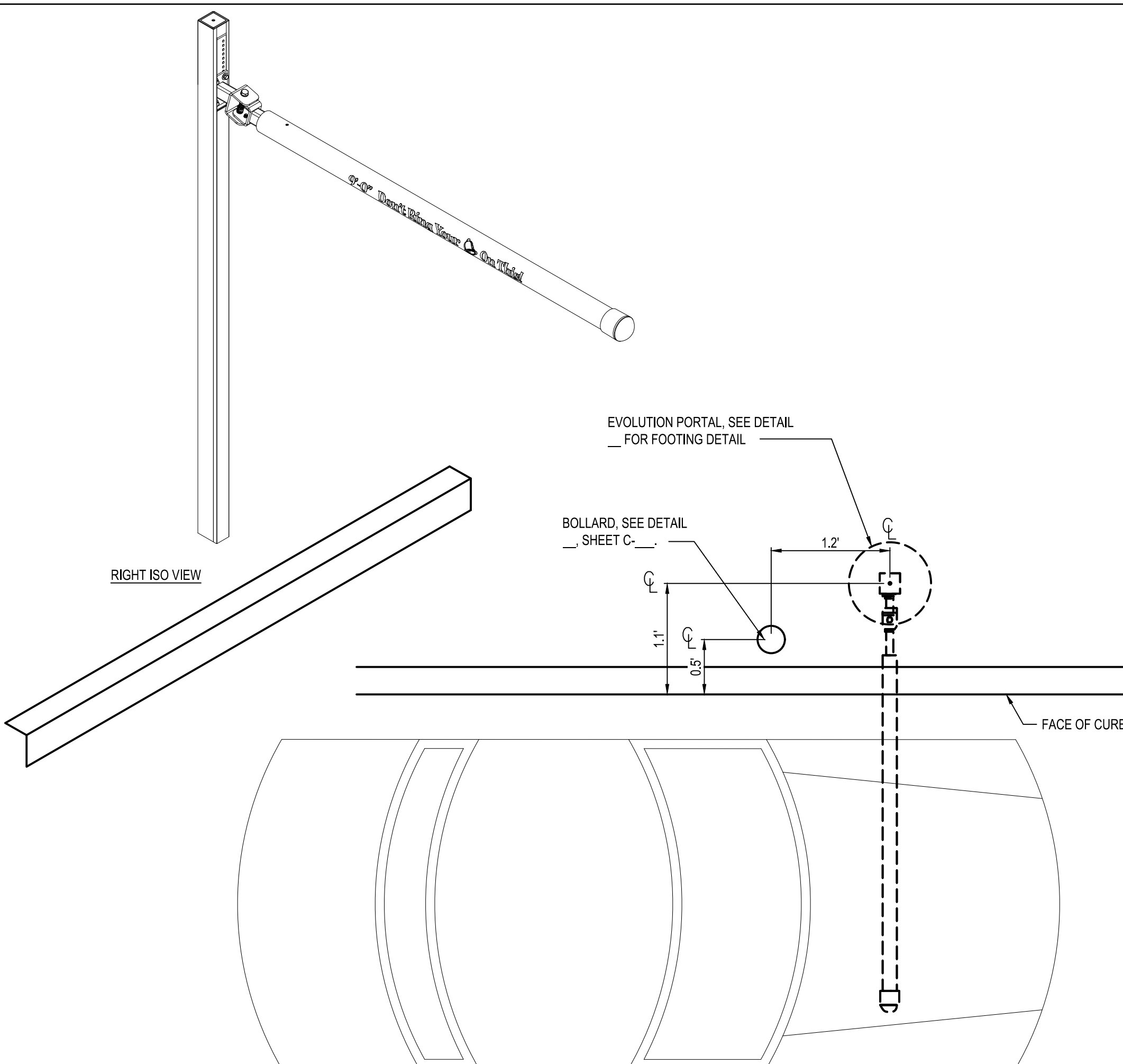
| CORNER DIMENSIONS |        |       |       |
|-------------------|--------|-------|-------|
| RADIUS            | A      | B     | C     |
| 15'-0"            | 12'-5" | 4'-8" | 1'-0" |
| 18'-0"            | 12'-6" | 4'-8" | 1'-3" |
| 20'-0"            | 12'-7" | 4'-8" | 1'-5" |

**NOTES**

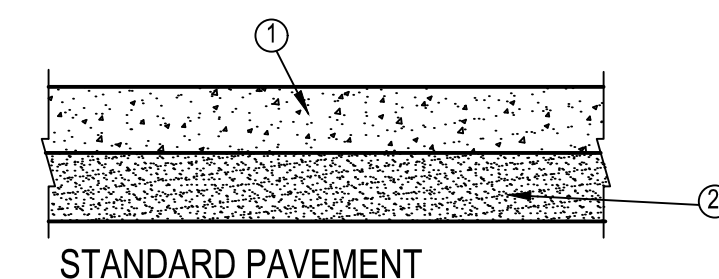
- IF EXISTING OCB LOCATION IS TO BE REUSED, CENTERLINE OF OCB FOOTING CAN BE BETWEEN 1'-10" AND 2'-10" FROM THE FACE OF CURB.
- CENTERLINE OF CANOPY FOOTING MUST BE WITHIN 18" OF FACE OF CURB.
- ALL AREAS OF THE MB MUST BE VISIBLE TO DRIVER LOCATED AT OCB. ASUME DRIVERS LOCATION IS 24" FROM FACE OF CURB, CENTERED ON OCB.
- CENTER OF MB TO BE 9'-0" TO 12'-0" FROM DRIVERS POINT OF VIEW.
- PROVIDE (1) 1" CONDUIT FROM BUILDING TO OCB FOR LOW VOLTAGE WIRING.



**B1** ENLARGED MENU BOARD DETAIL @ CURVED CURB  
N.T.S.

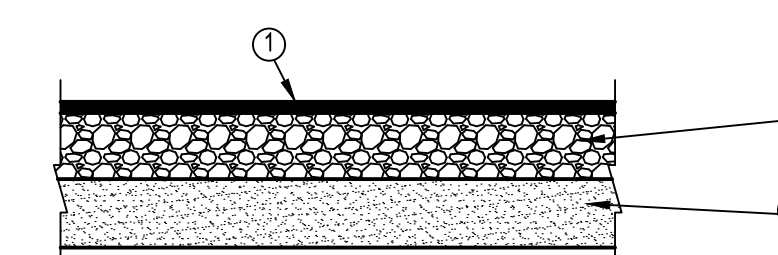


**B3** PORTAL PLACEMENT DETAIL  
N.T.S.



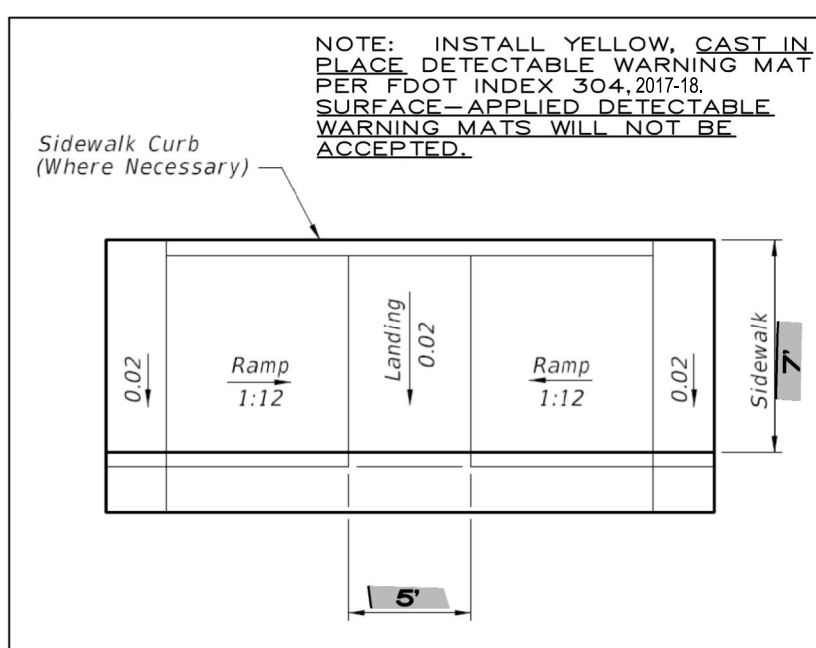
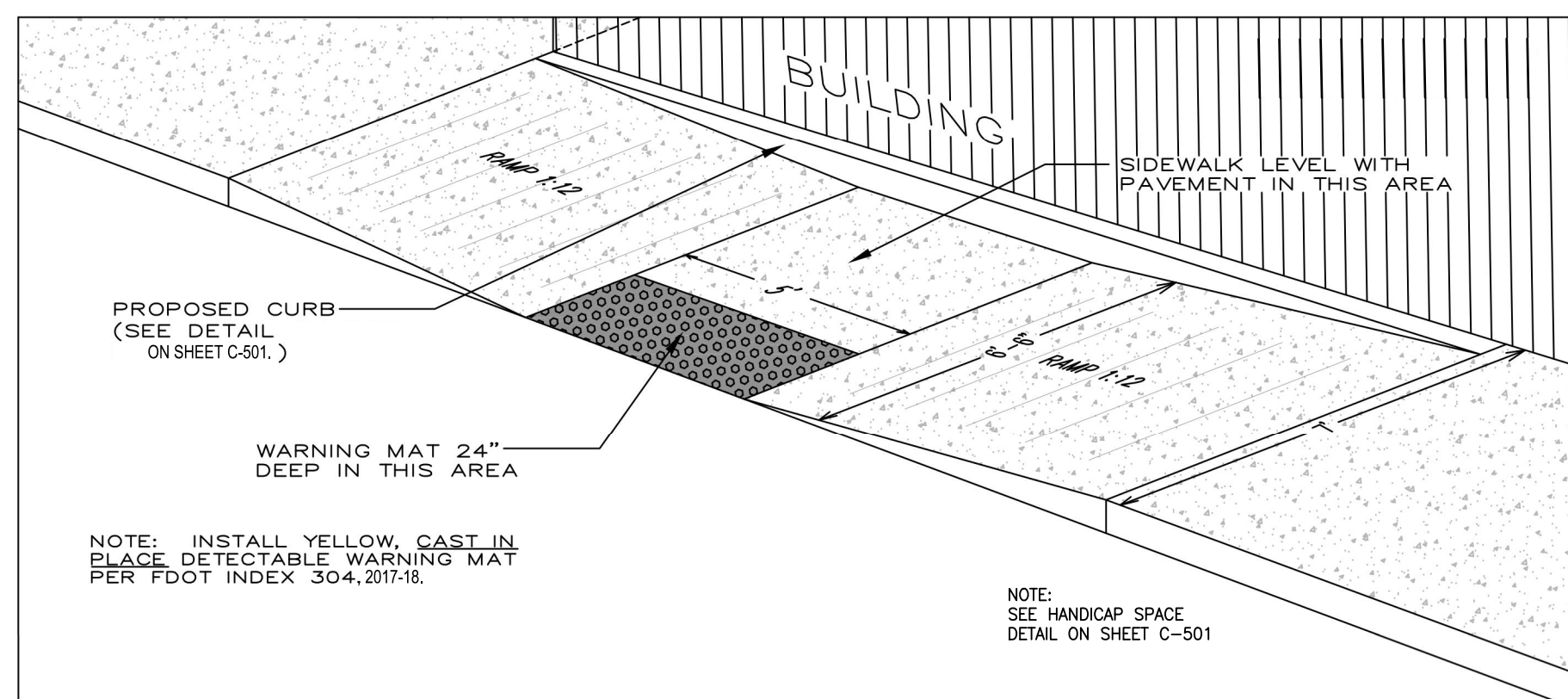
- STANDARD PAVEMENT**
- 6" PORTLAND CEMENT DESIGNED AND CONSTRUCTED IN ACCORDANCE WITH CURRENT PORTLAND CEMENT ASSOCIATION RECOMMENDED METHODS WITH A MINIMUM COMPRESSIVE STRENGTH OF 4,000 PSI. PROVIDE CONTRACTION JOINTS AT A MAXIMUM SPACING OF 12 FEET.
  - 12" SUBGRADE CONSISTING OF FREE DRAINING NATURAL FINE SAND OR FINE SAND FILL. SUBGRADE (LBR=40) TO BE COMPACTED TO A MINIMUM DENSITY OF 98% OF THE MODIFIED PROCTOR MAXIMUM DENSITY (ASTM D-1557).

**C5** ON-SITE CONCRETE PAVEMENT DETAIL  
N.T.S.

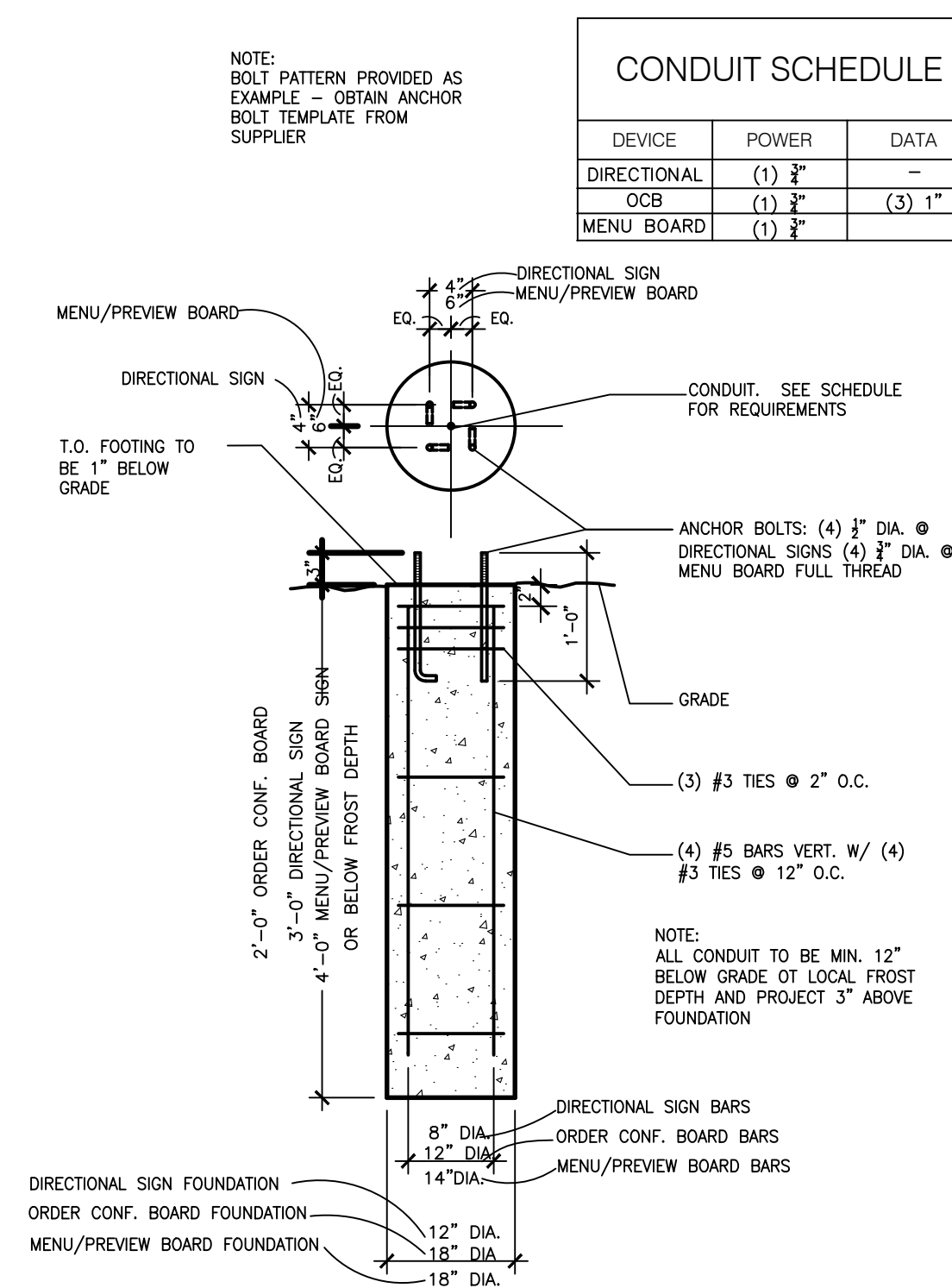
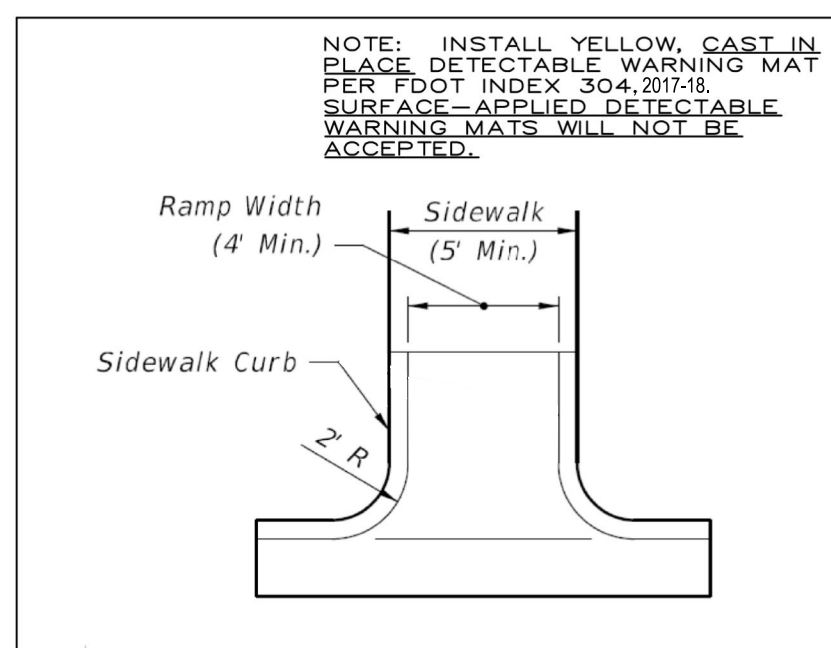


- STANDARD PAVEMENT**
- 1.5" F.D.O.T. TYPE SP-9.5 ASPHALT CONC.
  - 6" LIMEROCK (LBR=100) IN ACCORDANCE WITH CURRENT FDOT SPECIFICATIONS, COMPACTED TO 98% OF THE MODIFIED PROCTOR MAX. DRY DENSITY (AASHTO T-180)
  - 12" STABILIZED SUB-BASE (LBR=40%), COMPACTED TO 98% OF THE MODIFIED PROCTOR MAX. DRY DENSITY (AASHTO T-180)

**B5** ON-SITE ASPHALT PAVEMENT DETAIL  
N.T.S.

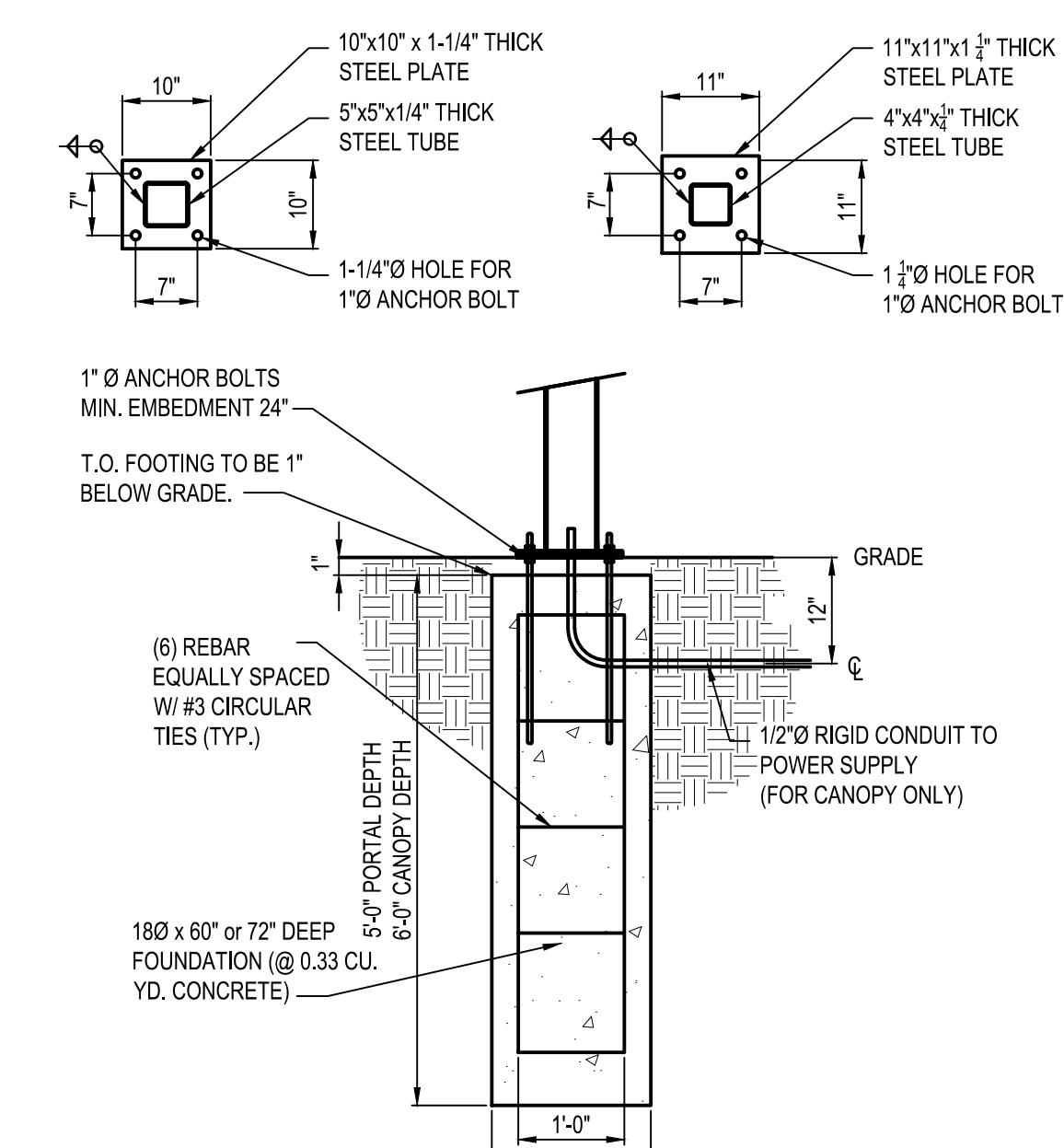


**A1** CURB CUT RAMP DETAIL  
N.T.S. ACCESSIBLE RAMPS CURB SHALL BE CONSTRUCTED IN CONFORMANCE WITH F.D.O.T. INDEX NUMBER 304, 2017-18



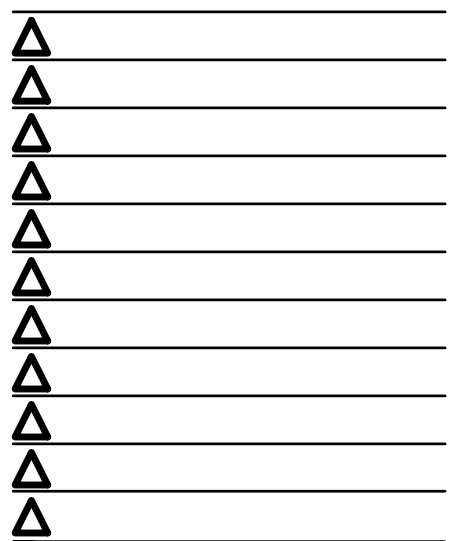
**A4** MENU BOARD FOUNDATION  
N.T.S.

| CONDUIT SCHEDULE |          |        |
|------------------|----------|--------|
| DEVICE           | POWER    | DATA   |
| DIRECTIONAL      | (1) 3/4" | -      |
| OCB              | (1) 3/4" | (3) 1" |
| MENU BOARD       | (1) 3/4" | -      |



**A5** EVOLUTION FOUNDATION DETAIL  
N.T.S.

ISSUED FOR CONST. 08.09.18



CONTRACT DATE: 09.18.17  
BUILDING TYPE: EXP. LITE MED40  
PLAN VERSION: July 2017  
SITE NUMBER: 312536/445270  
STORE NUMBER: 2017088.45

TACO BELL  
PARCEL # 012529302500010020  
BUENAVENTURA BLVD.  
KISSIMMEE, FL 34743

TACO BELL  
EXPLORER LITE  
MEDIUM40

**DETAILS**

**C-502**

PROJECT NO. - SDP17-0154