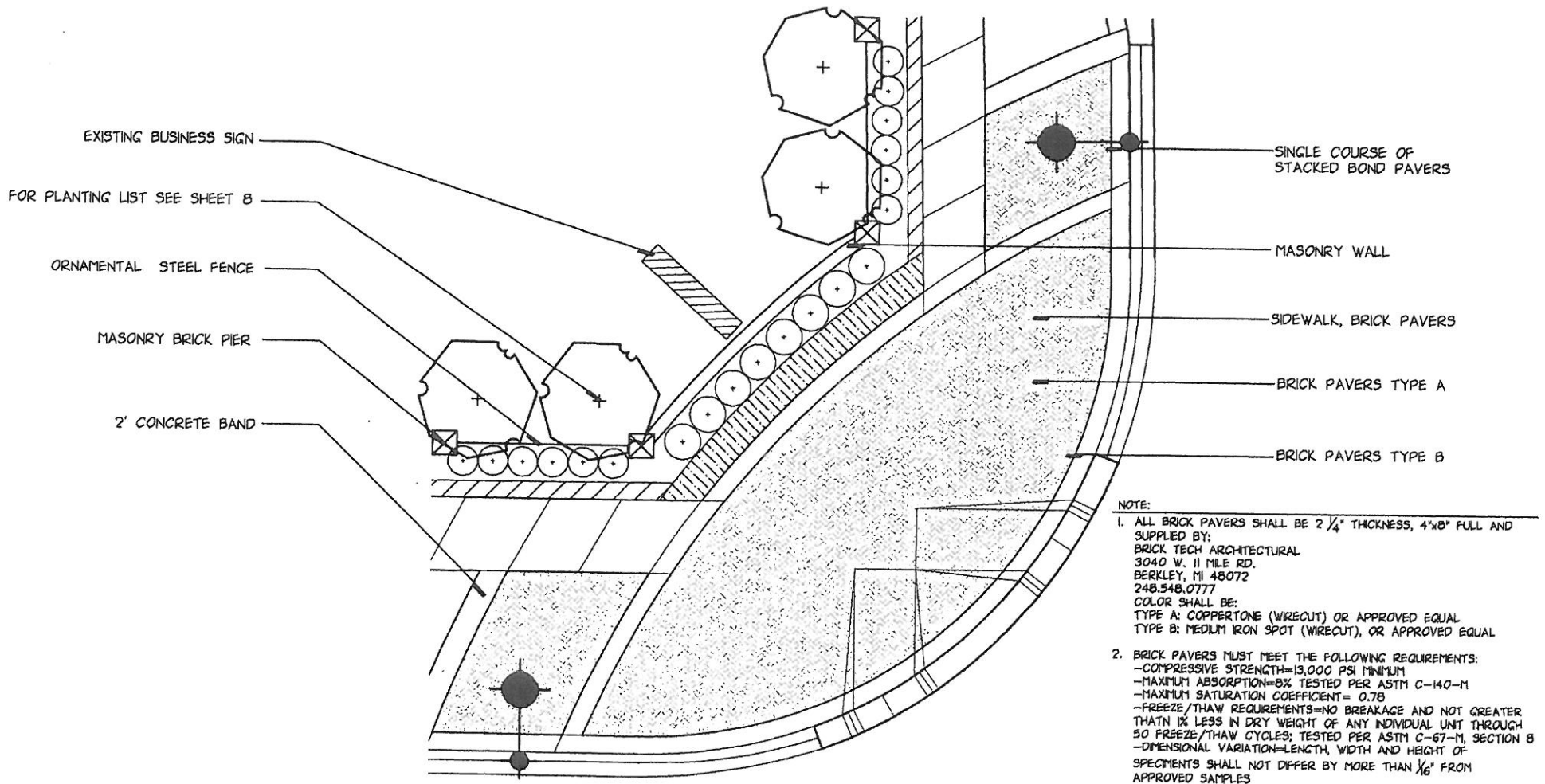
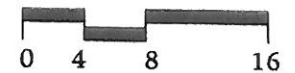

Page 1.....	Sheet Index
Page 2.....	Typical Brick Paver Layout and Materials at Corner
Page 3.....	Typical Wall Elevation with Plantings
Page 4.....	Masonry Pier and Wall Elevation
Page 5.....	Masonry Brick Piers and Masonry Wall Section/ Elevation
Page 6.....	Masonry Piers Section/ Limestone Cap Plan
Page 7.....	Brick Piers and Ornamental Fencing Section/ Elevation
Page 8.....	Plant Material Standards

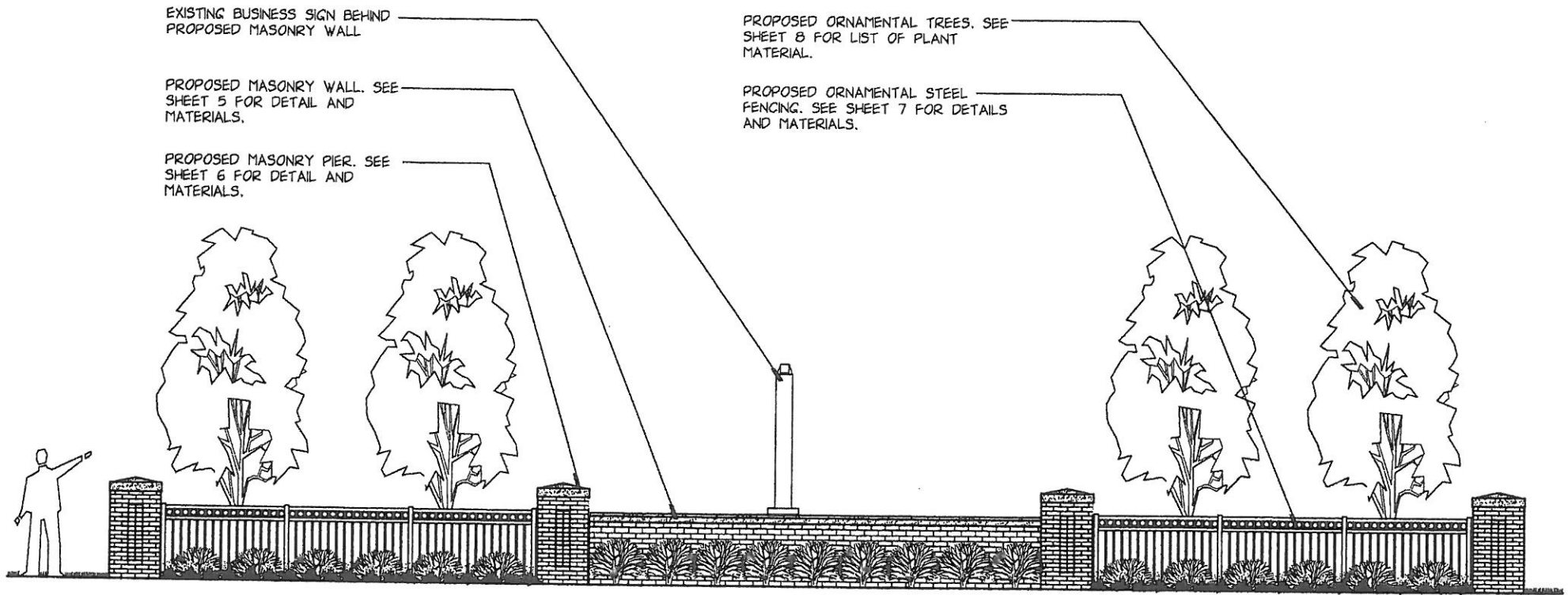
Sheet Index



Typical Brick Paver Layout and Materials at Corner

SCALE:

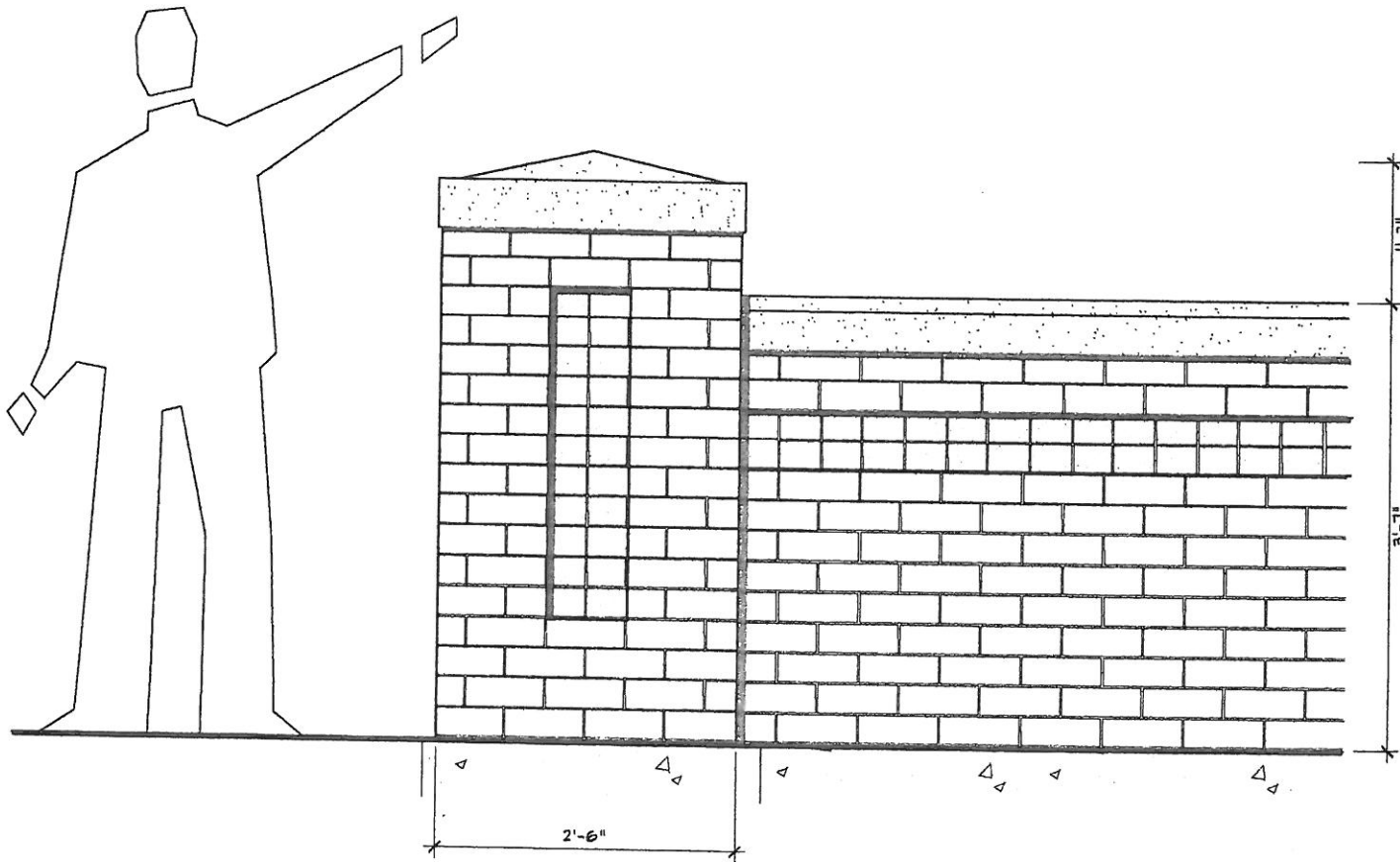




NOTE:
SEE SHEET 2 FOR BRICK PAVER
LAYOUT AND MATERIALS.

Typical Wall Elevation with Plantings

NO SCALE



NOTE:

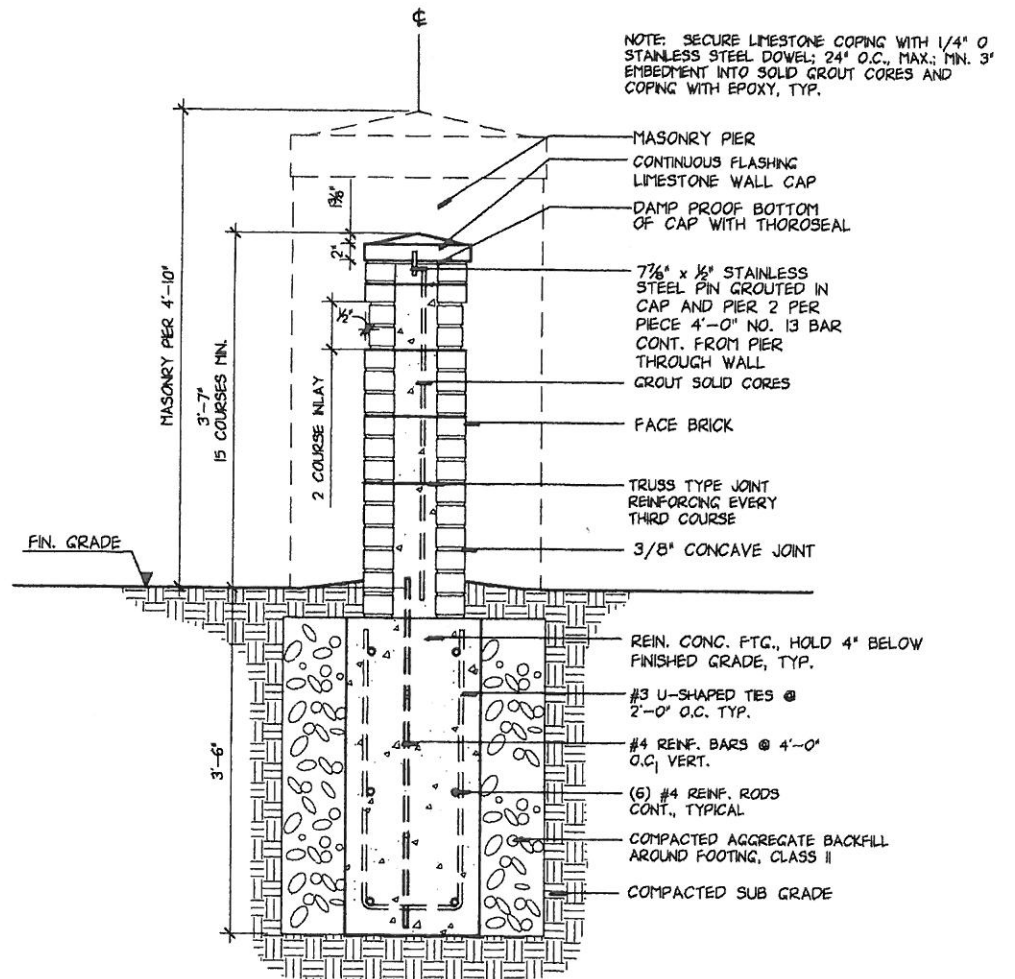
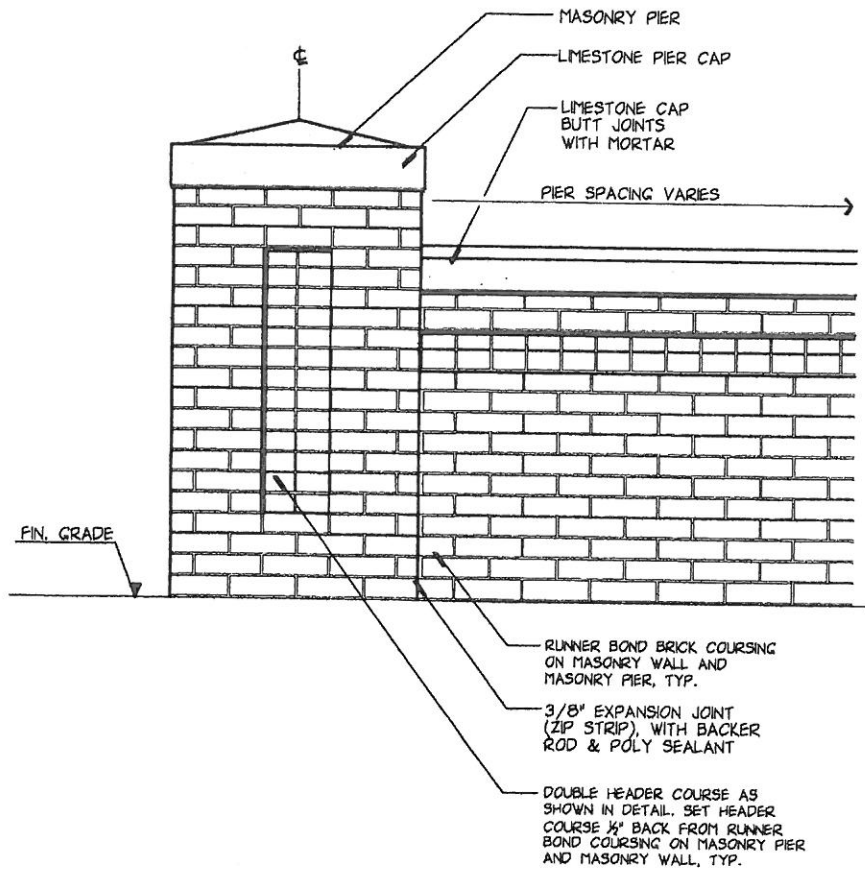
CLAY MASONRY UNITS FOR WALLS AND PIERS:

1. BRICK SHALL BE:
 GLEN-GERY BRICK
 HOMETOWN SERIES- CLARION
 (MODULAR)
 PROVIDED BY:
 COLONIAL BRICK CO.
 12844 GREENFIELD
 DETROIT, MI 48227
 313.272.2160
2. SPECIFICATIONS:
 -MODULAR FACE BRICK, MACHINE
 MOLDED, UNFROGGED, GRADE SW,
 TYPE FBS, MEETING ASTM DESIGNATION
 C216-01, AVERAGE COMPRESSIVE
 STRENGTH 6,431, AVERAGE MODULUS
 OF RUPTURE 1,761, AVERAGE
 ABSORPTION (24 HOURS COLD
 WATER) 4.51

Masonry Pier and Wall Elevation

NO SCALE

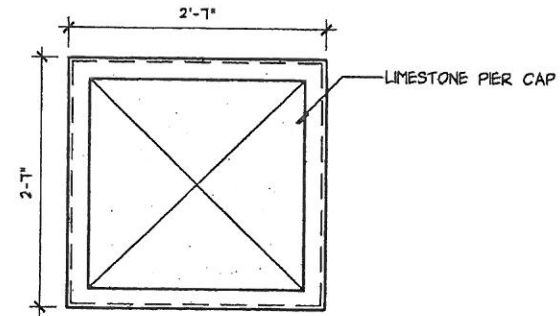
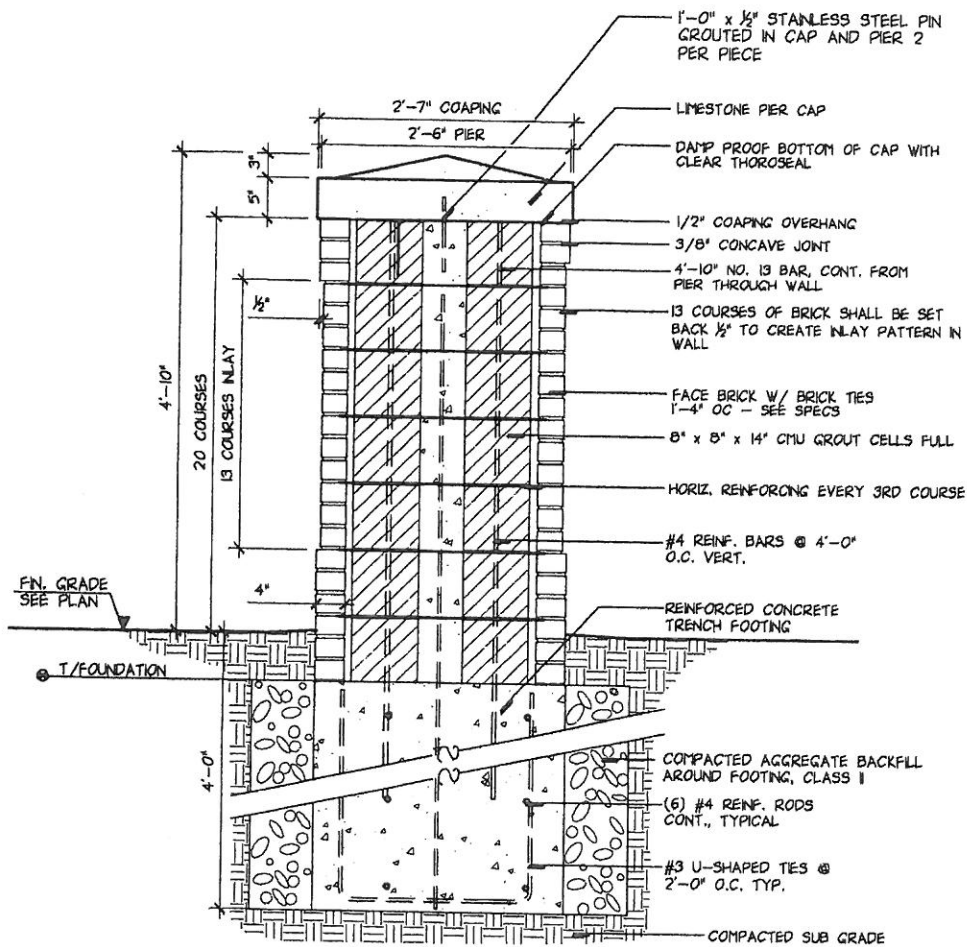
PAGE 4



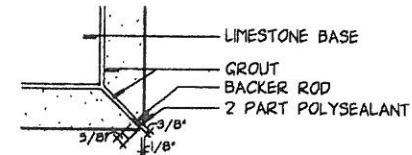
NOTE: SECURE LIMESTONE COPING WITH 1/4" O STAINLESS STEEL DOWEL; 24" O.C., MAX.; MIN. 3" EMBEDMENT INTO SOLID GROUT CORES AND COPING WITH EPOXY, TYP.

Masonry Brick Piers and Masonry Wall Section/ Elevation

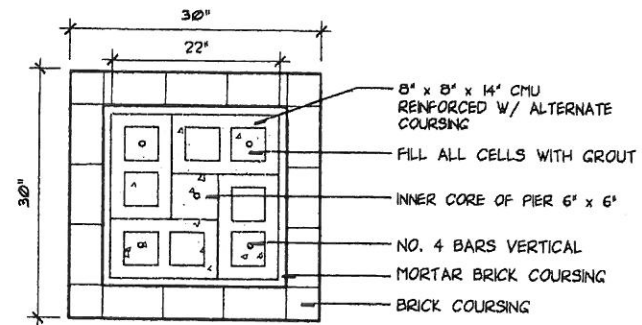
NO SCALE



PLAN



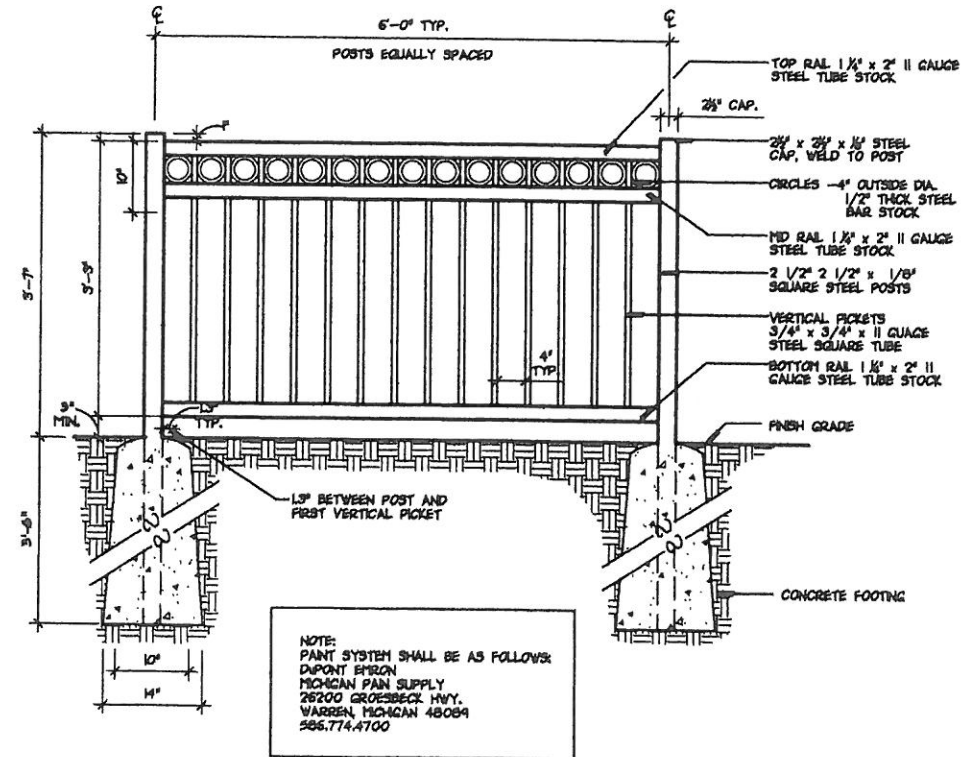
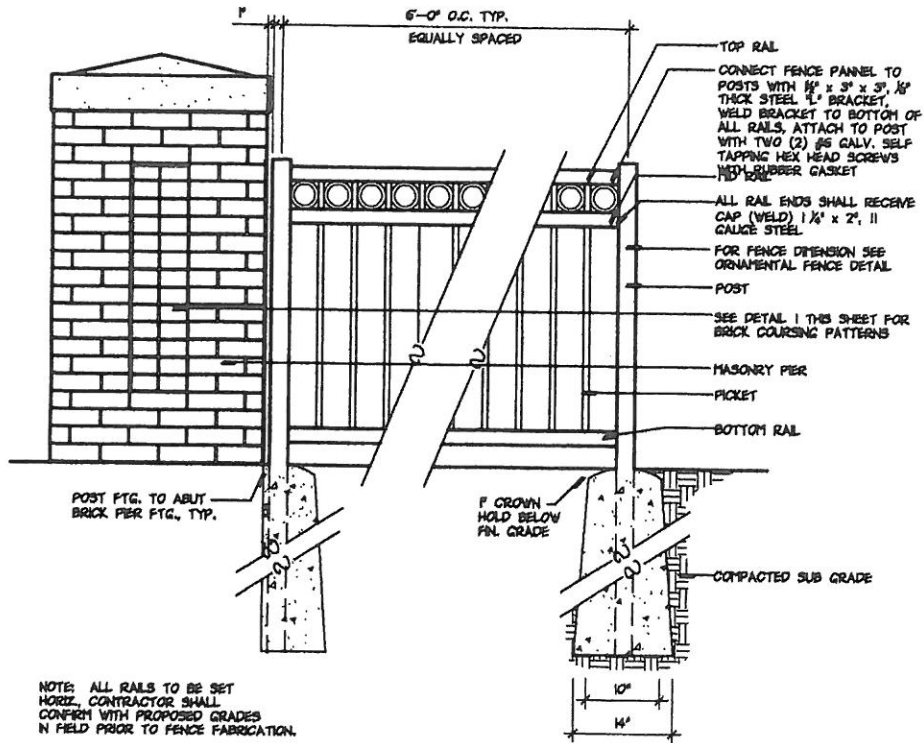
PLAN VIEW OF LIMESTONE BASE NOT TO SCALE



PLAN

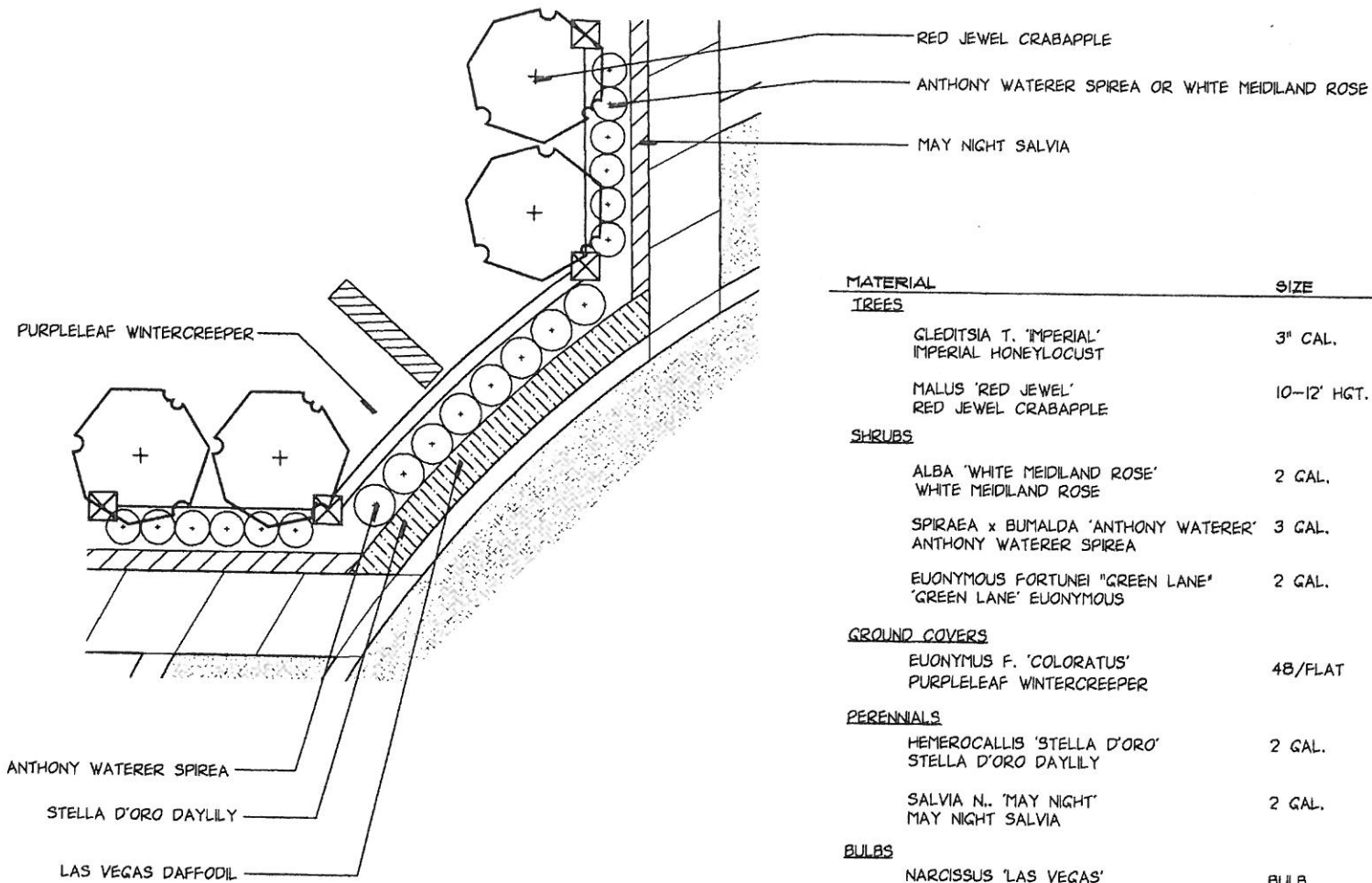
Masonry Piers Section/ Limestone Cap Plan

NO SCALE



Brick Piers and Ornamental Fencing Section/ Elevation

NO SCALE



MATERIAL	SIZE	COMMENTS
<u>TREES</u>		
GLEDITSIA T. 'IMPERIAL'	3" CAL.	SINGLE STRAIGHT TRUNK, FULL HEAD,
'IMPERIAL' HONEYLOCUST		
MALUS 'RED JEWEL'	10-12' HGT.	MULTI-TRUNK, MATCHED,
RED JEWEL CRABAPPLE		5 TRUNK MIN.
<u>SHRUBS</u>		
ALBA 'WHITE MEIDLAND ROSE'	2 GAL.	24" SPD., FULL HEAVY
WHITE MEIDLAND ROSE		PLANTS, 3' O.C.
SPIRAEA x BUMALDA 'ANTHONY WATERER'	3 GAL.	3" HGT., FULL HEAVY
ANTHONY WATERER SPIREA		PLANTS, 3' O.C.
EUONYMUS FORTUNEI 'GREEN LANE'	2 GAL.	16" RUNNERS, 24" O.C.
'GREEN LANE' EUONYMUS		
<u>GROUND COVERS</u>		
EUONYMUS F. 'COLORATUS'	48/FLAT	4/SF
PURPLELEAF WINTERCREEPER		
<u>PERENNIALS</u>		
HEMEROCALLIS 'STELLA D'ORO'	2 GAL.	3 YR., 3 FANS MIN., 18" O.C.
STELLA D'ORO DAYLILY		
SALVIA N. 'MAY NIGHT'	2 GAL.	3 YR., 3 FANS MIN., 18" O.C.
MAY NIGHT SALVIA		
<u>BULBS</u>		
NARCISSUS 'LAS VEGAS'	BULB	12" O.C., PLANTING DEPTH-
LAS VEGAS DAFFODIL		3X BULB HGT.

Plant Material Standards

NO SCALE