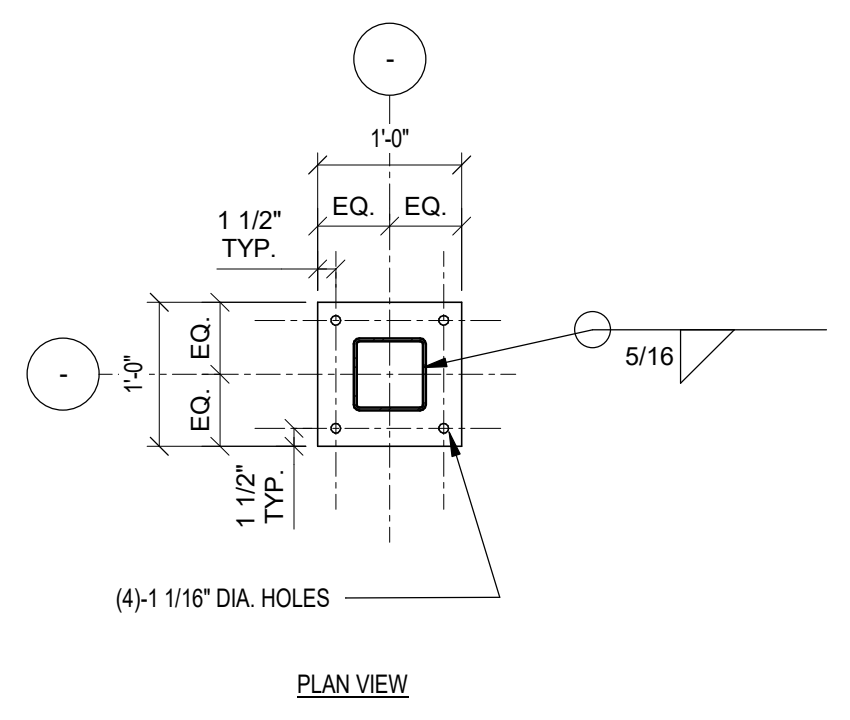
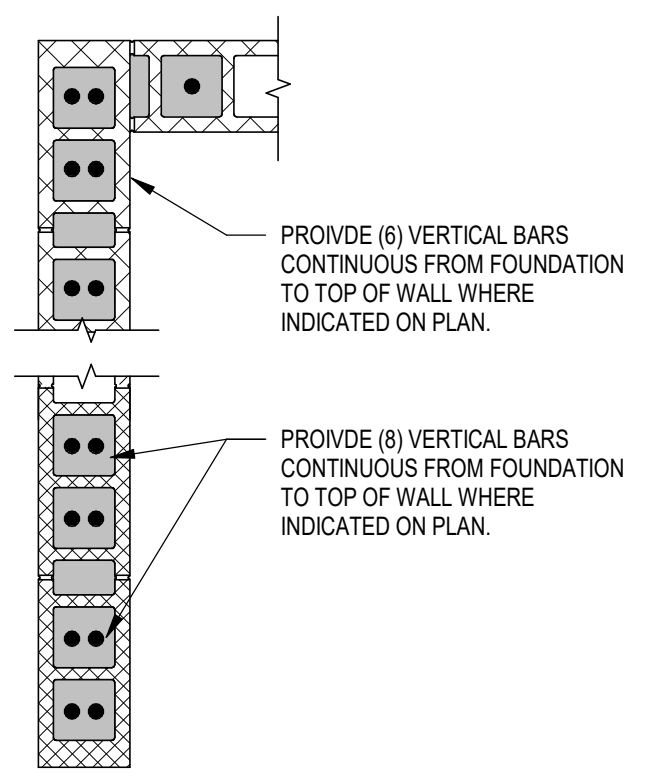


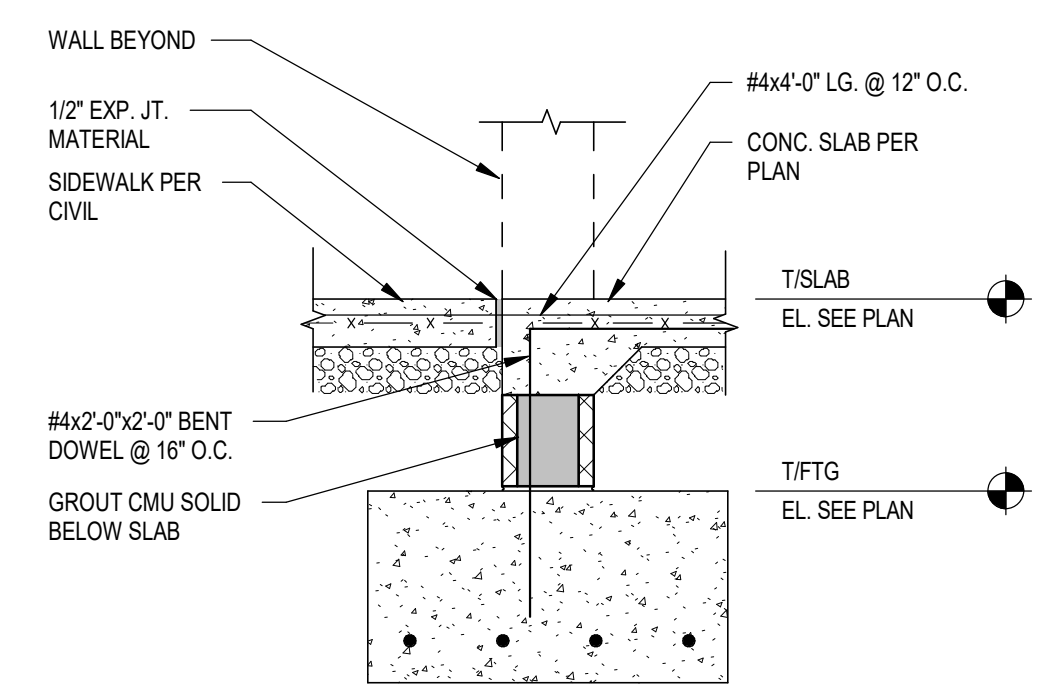
SECTION 3/4" = 1'-0" **17**



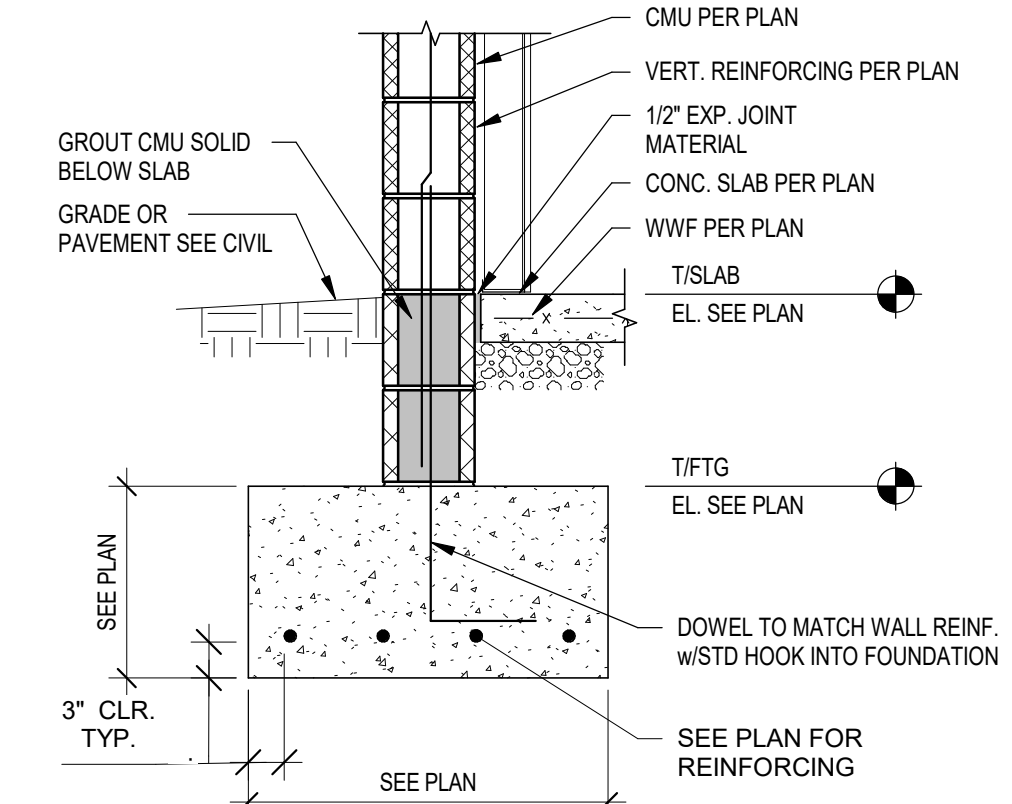
TYP. BASE PLATE DETAIL 3/4" = 1'-0" **13**



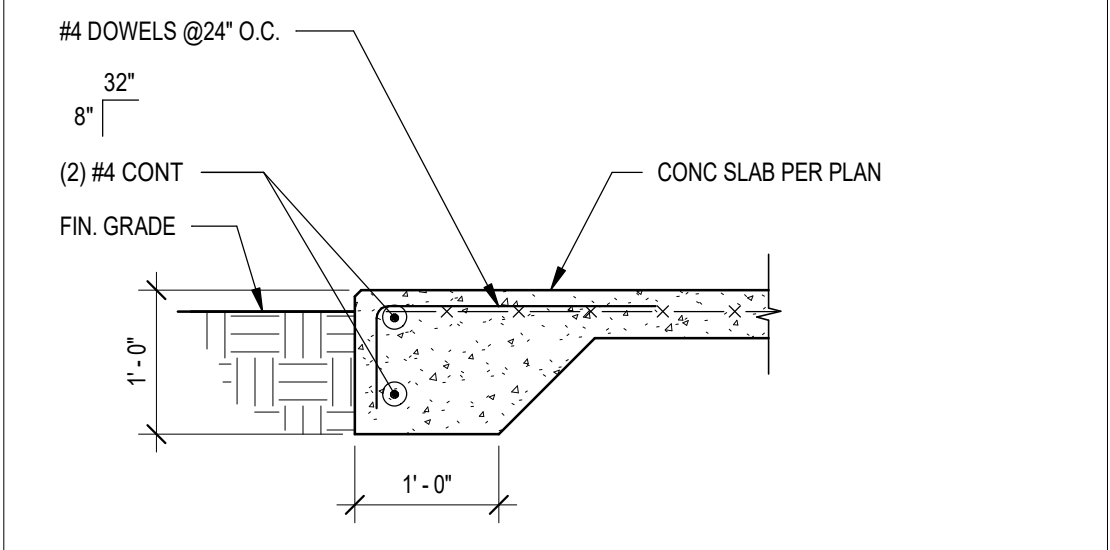
REINF. @ FRONT TOWER WALL 3/4" = 1'-0" **9**



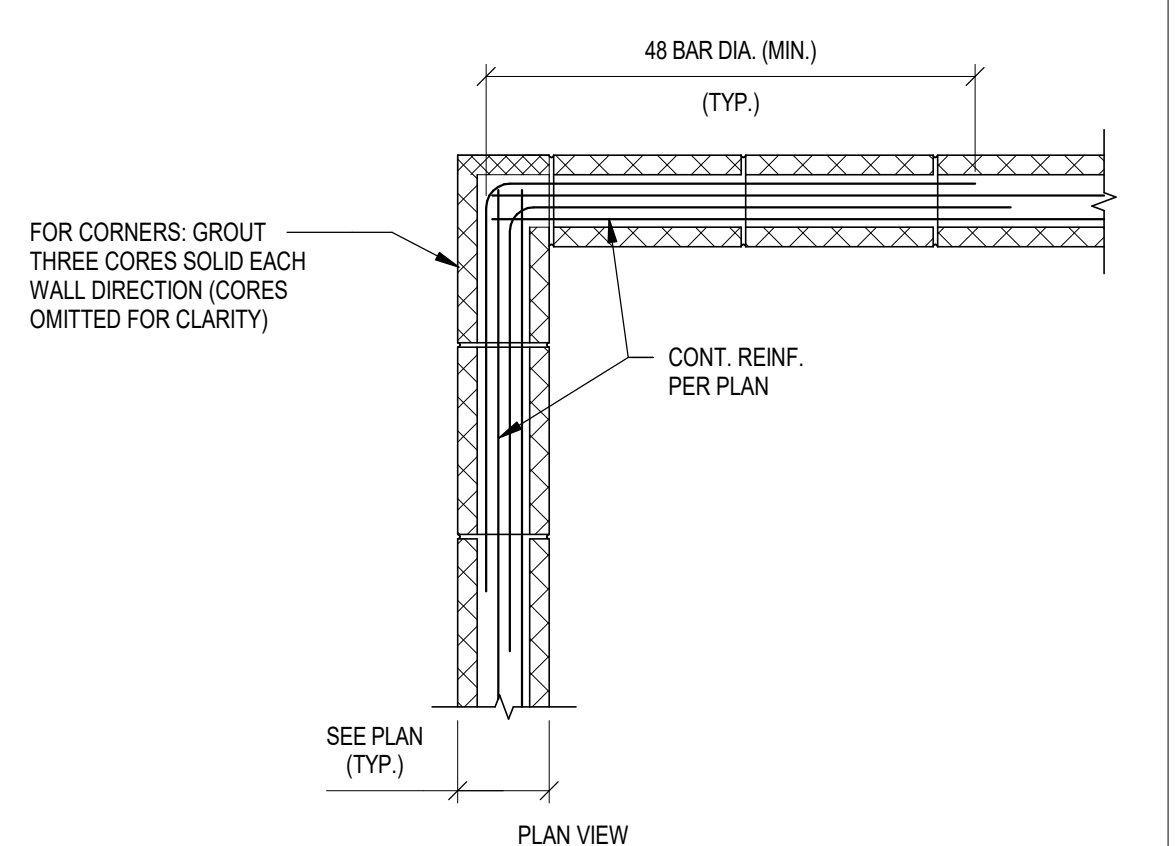
FOOTING @ DOOR OPENING 3/4" = 1'-0" **5**



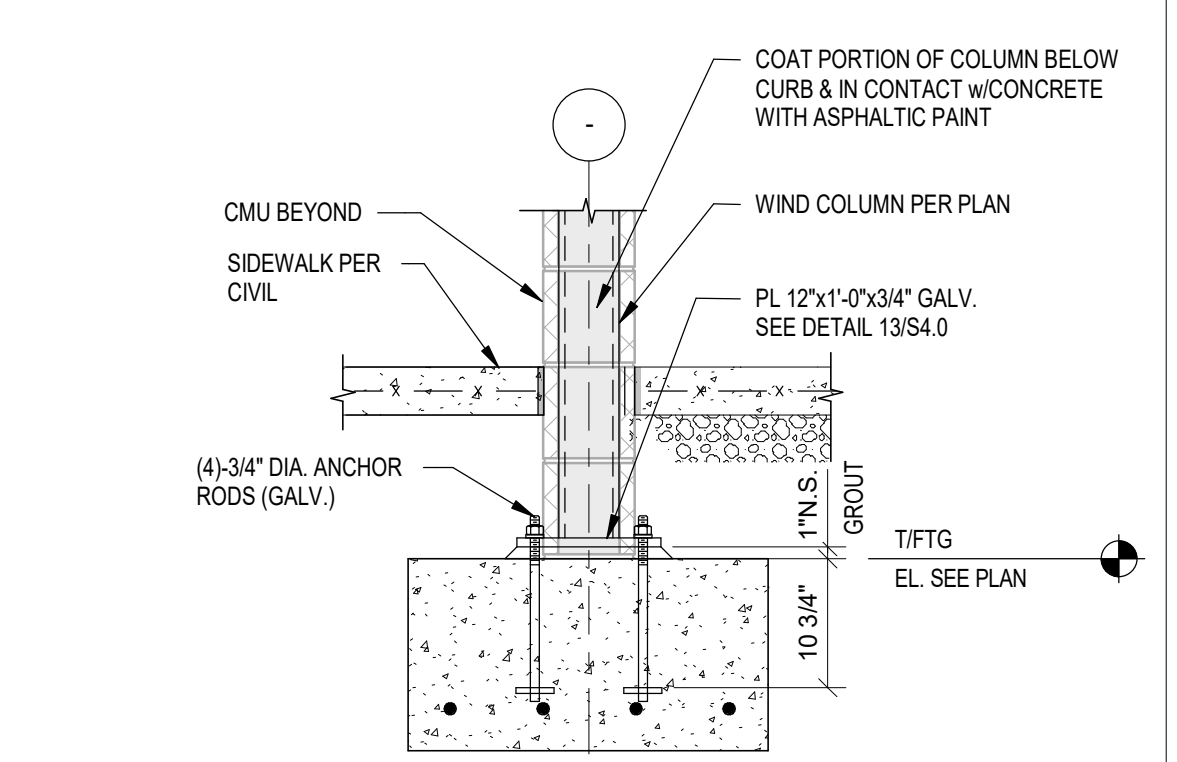
FOOTING @ SIDE & REAR WALLS 3/4" = 1'-0" **1**



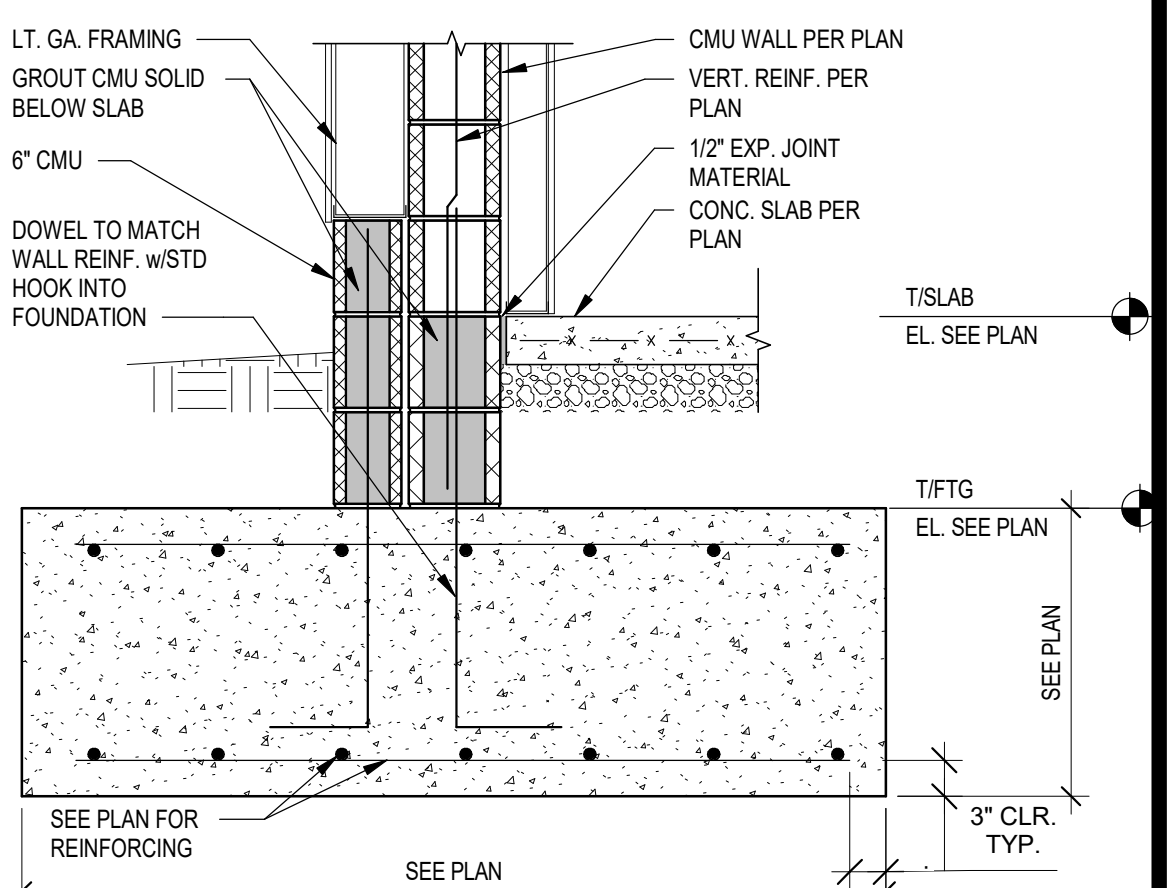
TYP. TURNDOWN DETAIL 3/4" = 1'-0" **14**



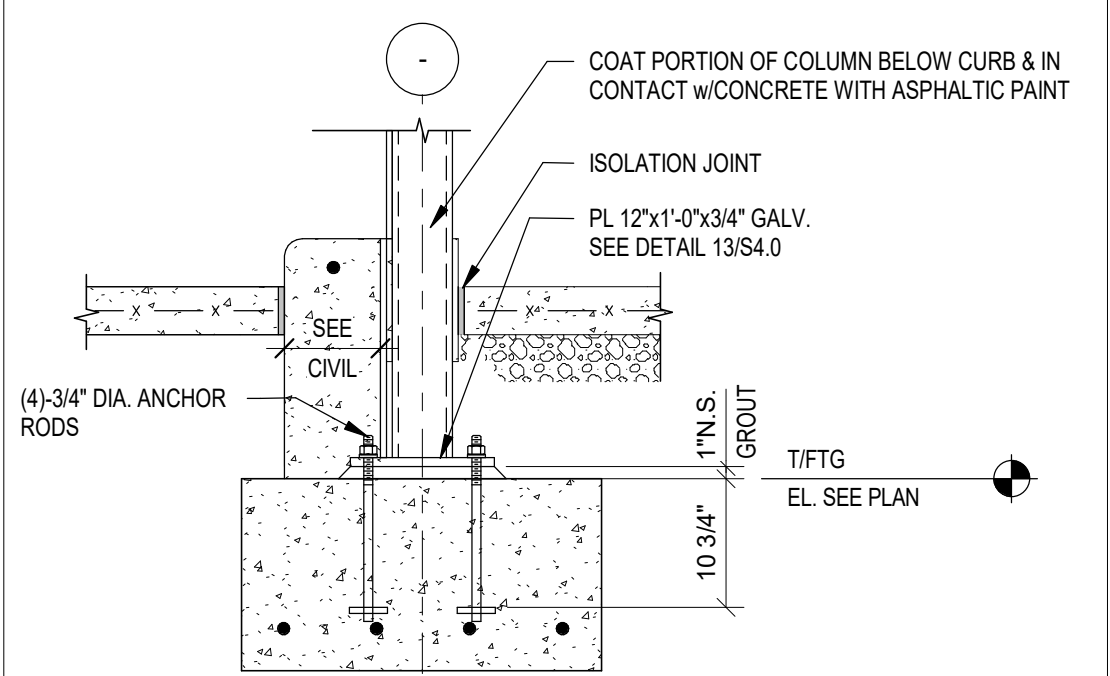
CMU BOND BEAM AT CORNER 3/4" = 1'-0" **10**



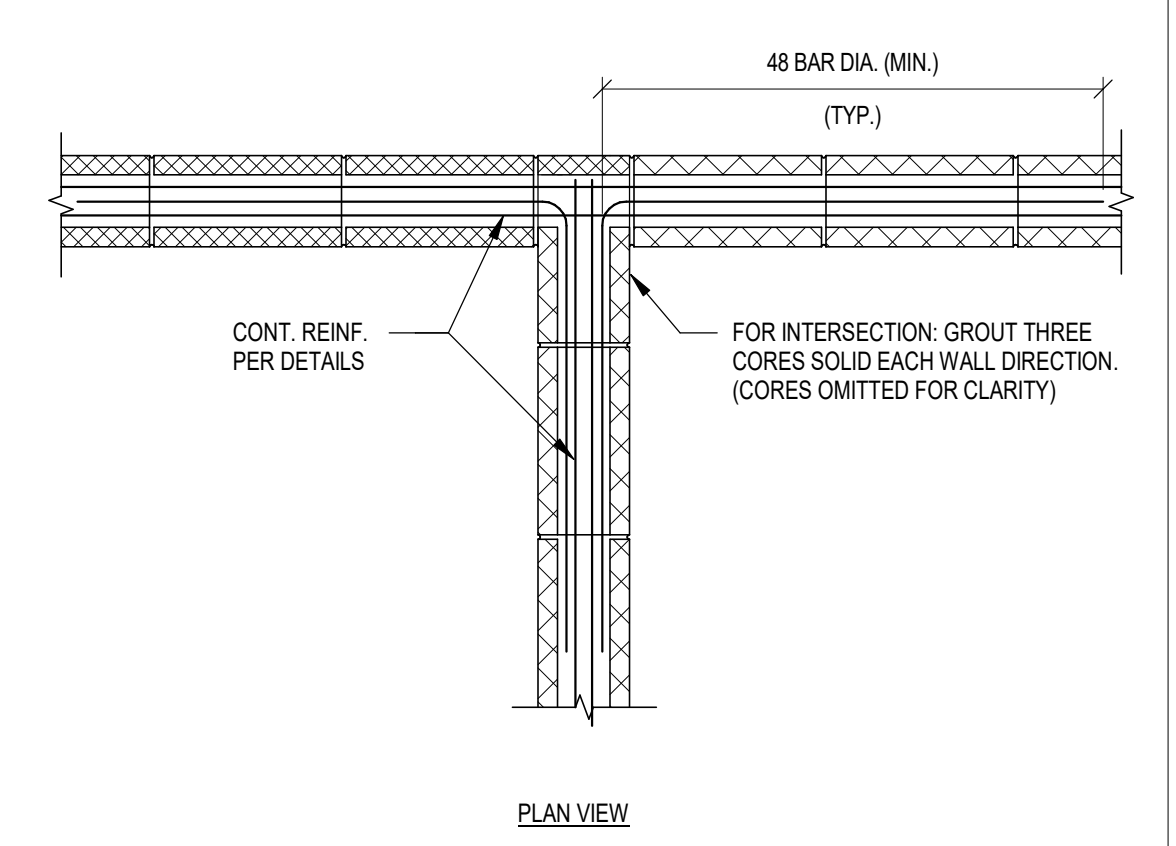
FOOTING @ WIND COLUMN 3/4" = 1'-0" **6**



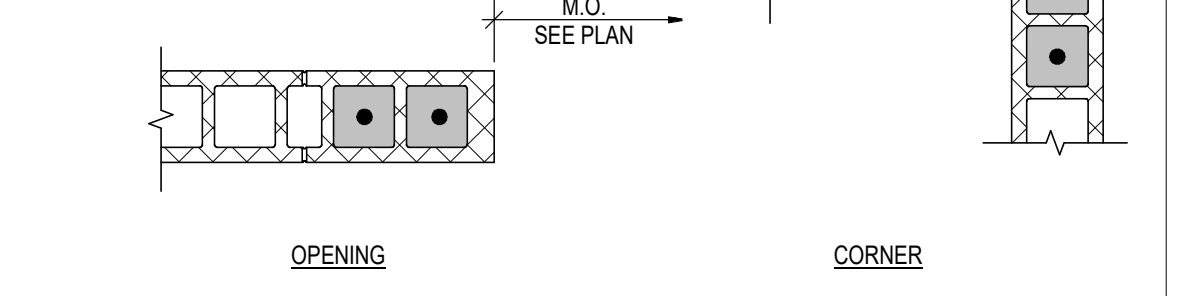
FOOTING @ FRONT TOWER LEG 3/4" = 1'-0" **2**



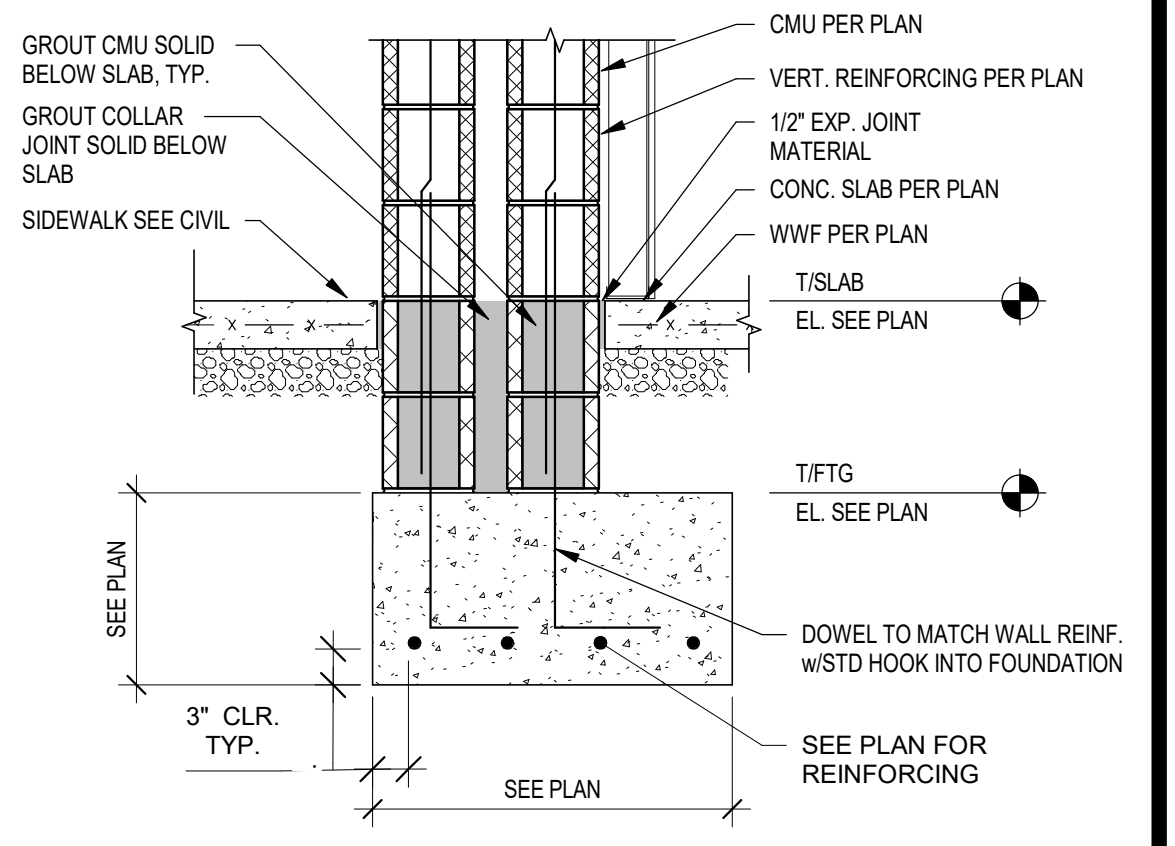
FOOTING @ COLUMN 3/4" = 1'-0" **15**



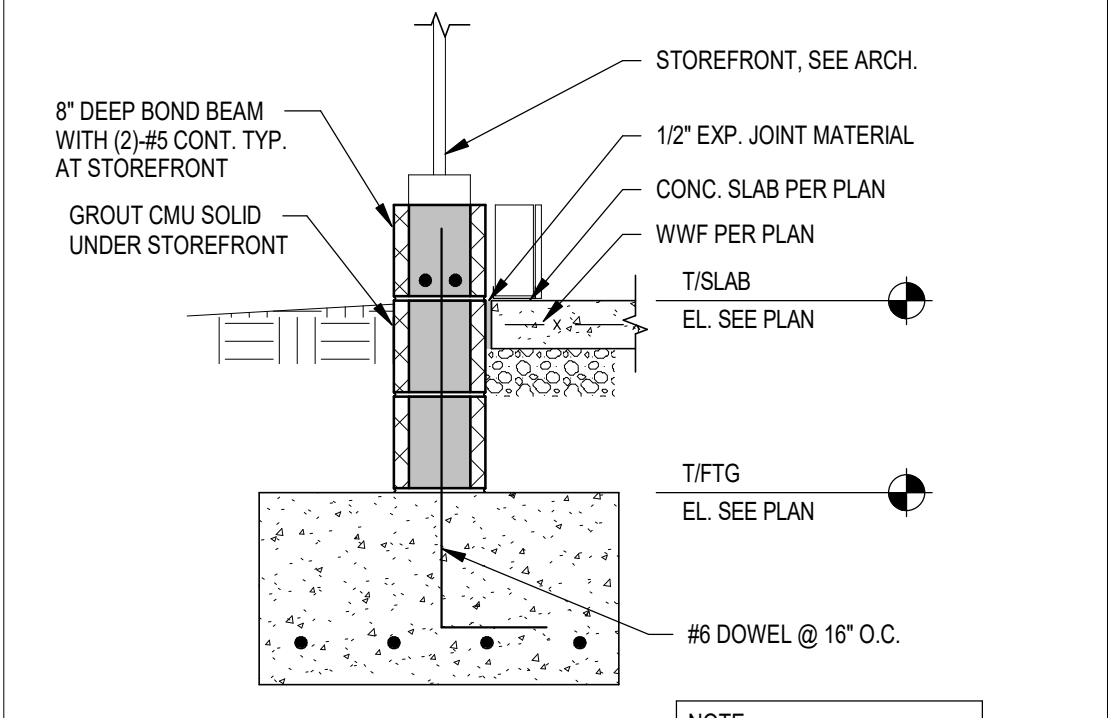
CMU BOND BEAM AT INTERSECTION 3/4" = 1'-0" **11**



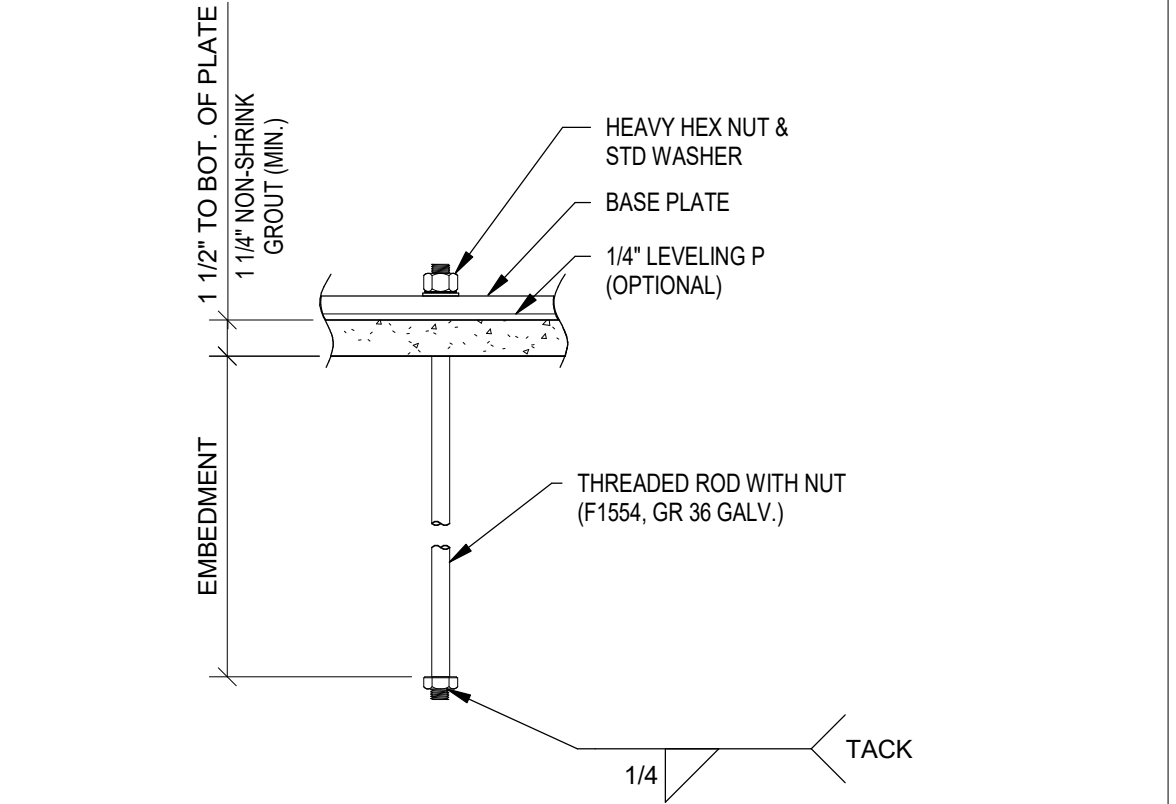
TYP. MASONRY REINFORCEMENT 3/4" = 1'-0" **7**



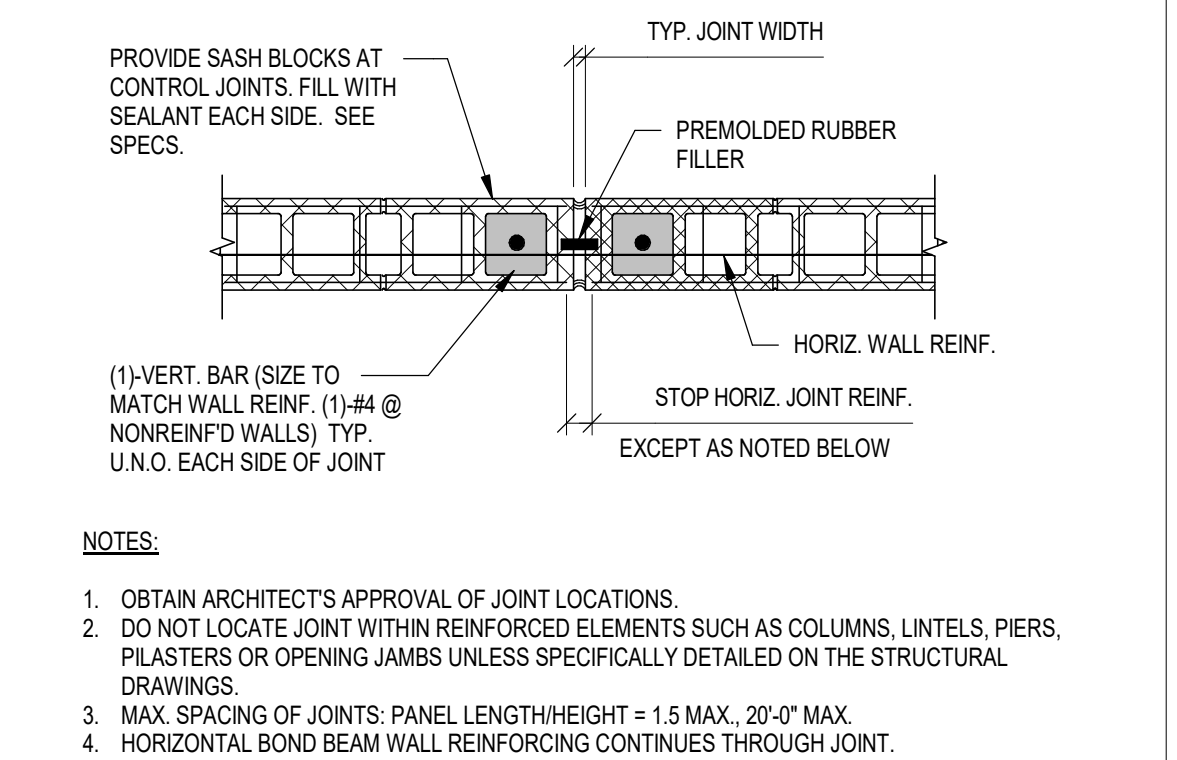
FOOTING @ ENTRANCE PORTAL 3/4" = 1'-0" **3**



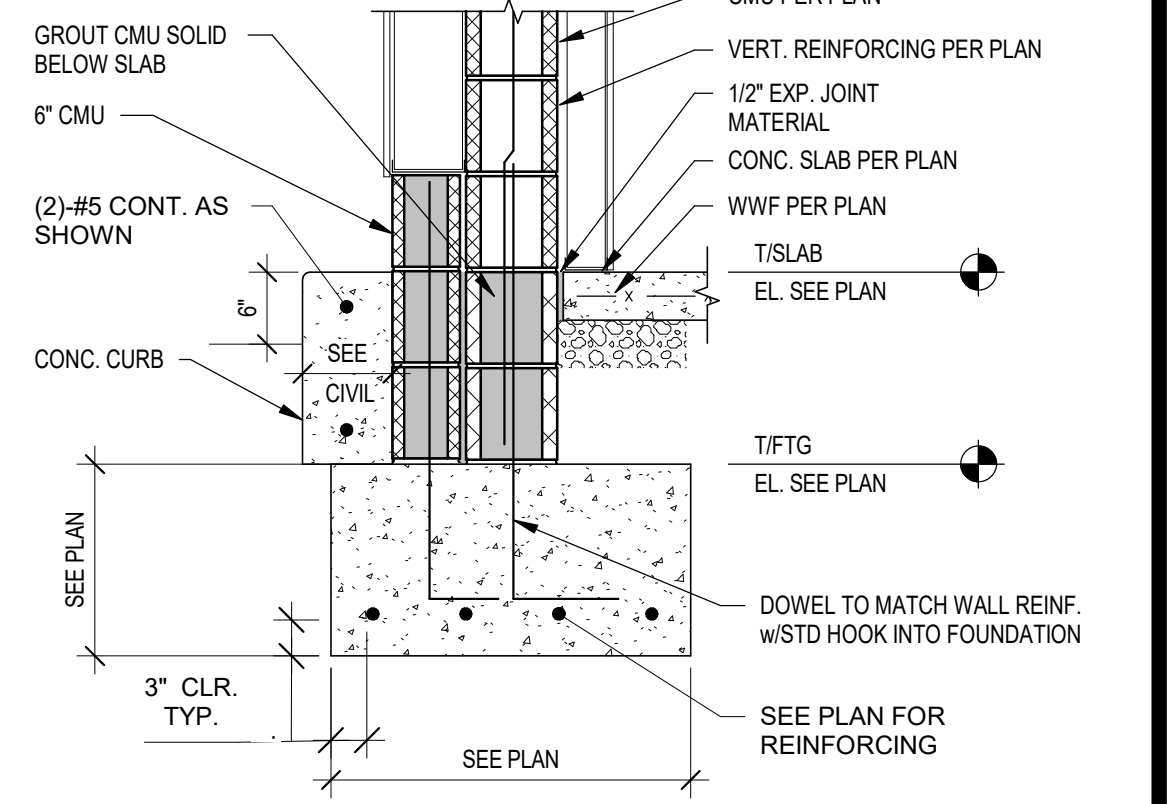
FOOTING @ STOREFRONT 3/4" = 1'-0" **16**



TYP. ANCHOR ROD DETAIL 3/4" = 1'-0" **12**



TYP. MASONRY CONTROL JOINT 3/4" = 1'-0" **8**



FOOTING @ DRIVE THRU 3/4" = 1'-0" **4**

| | |
|----------|-------------------|
| 04/06/18 | ISSUED FOR PERMIT |
| 07/25/18 | ISSUED FOR BID |
| | |
| | |
| | |
| | |
| | |
| | |
| | |
| | |

CONTRACT DATE: 01.08.18
 BUILDING TYPE: T40CAL-SOL
 PLAN VERSION: FEB 2018
 BRAND DESIGNER: GPD GROUP
 SITE NUMBER: 312032
 STORE NUMBER: 2018088.03

TACO BELL
 5070 W. ATLANTIC BLVD.
 DELRAY BCH, FL 33484

TACO BELL
 T40
 OPEN KITCHEN
 CALIFORNIA SOL

**STRUCTURAL
 DETAILS
 FOUNDATION**

S4.0

PLOT DATE: 7/25/2018 4:15:31 PM

- DIMENSIONS ON THIS DWG. ARE TO FRAME EDGE. REFER TO SHEETS A1.0 AND A5.0-AS 3 SHEETS FOR ROUGH OPENING DIMENSIONS.
- ALL STOREFRONT AND DRIVE-THRU WINDOW FRAMES SHALL BE DARK BRONZE. DRIVE THRU WINDOW <B-140> SHALL BE DARK BRONZE. DRIVE THRU WINDOW <B-140> SHALL BE THERMALLY BROKEN.
- ALL STOREFRONT GLAZING TO BE THERMALLY BROKEN.
- SEE SCHEDULE FOR GLASS TYPES.
- REFER TO FLOOR PLAN, ELEVATIONS AND WALL SECTIONS FOR ROUGH OPENING DIMENSIONS.
- ALL STOREFRONT MATERIAL AND GLAZING SHALL BE SUPPLIED AND INSTALLED BY G.C. U.O.N.
- ALL TEMPERED GLAZING SHALL BE IDENTIFIED BY A LABEL SPECIFYING THE LABELER, WHETHER THE MANUFACTURER OR INSTALLER, AND THE SAFETY GLAZING STANDARD WITH WHICH IT COMPLIES. THE LABEL SHALL BE ACID ETCHED, SAND BLASTED, CERAMIC FIRED, OR AN EMBOSSED MARK, WHICH ONCE APPLIED CANNOT BE REMOVED WITHOUT BEING DESTROYED.

NATIONAL ACCOUNT SUPPLIER

INTERIOR DOORS, FRAMES & HARDWARE

LOCKNET
CONSTRUCTION@LOCKNET.COM
800 JOHN C WATTS DRIVE
NICHOLASVILLE, KY 40356
800-887-4307 FAX: 859-887-4958

GLASS SCHEDULE

(A) 1-5/16" IMPACT RATED INSULATED LAMINATED GLAZING**
(B) 1" TINTED GLASS - 3M WINDOW FILM PRESTIGE PR70
(C) SAFETY GLASS BY MFR

NOTE:
** CLIMATE ZONES 1 AND 2. IGU AT STOREFRONT 0.60 U-FACTOR, SHGG PFX0.5=0.27 (1/4" CLEAR TEMPERED SOLARBAN 70XL LOW-E #2 + 1/2" AIR + 1/4" CLEAR + 0.90 SG + 1/4" CLEAR); CATEGORY II SAFETY GLASS

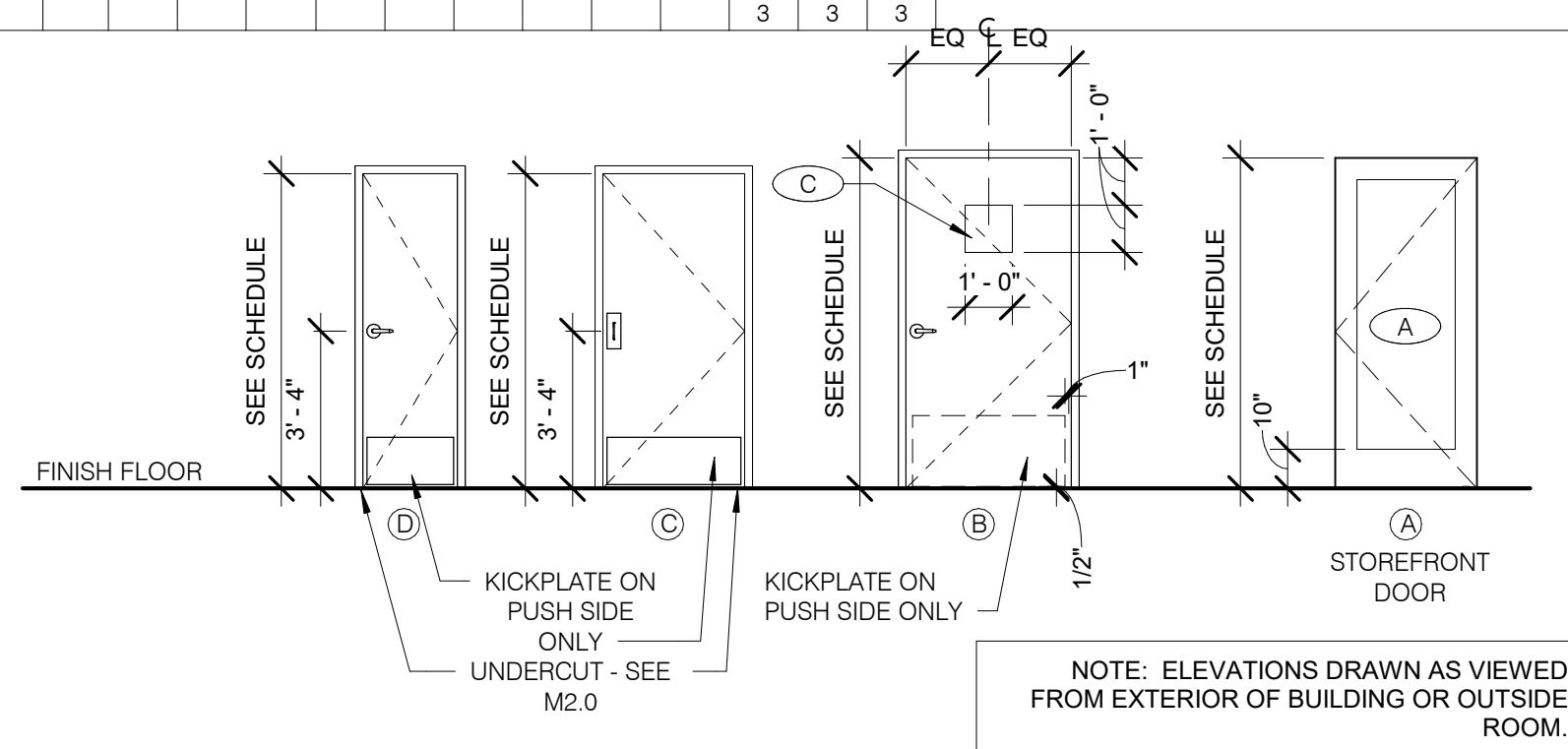
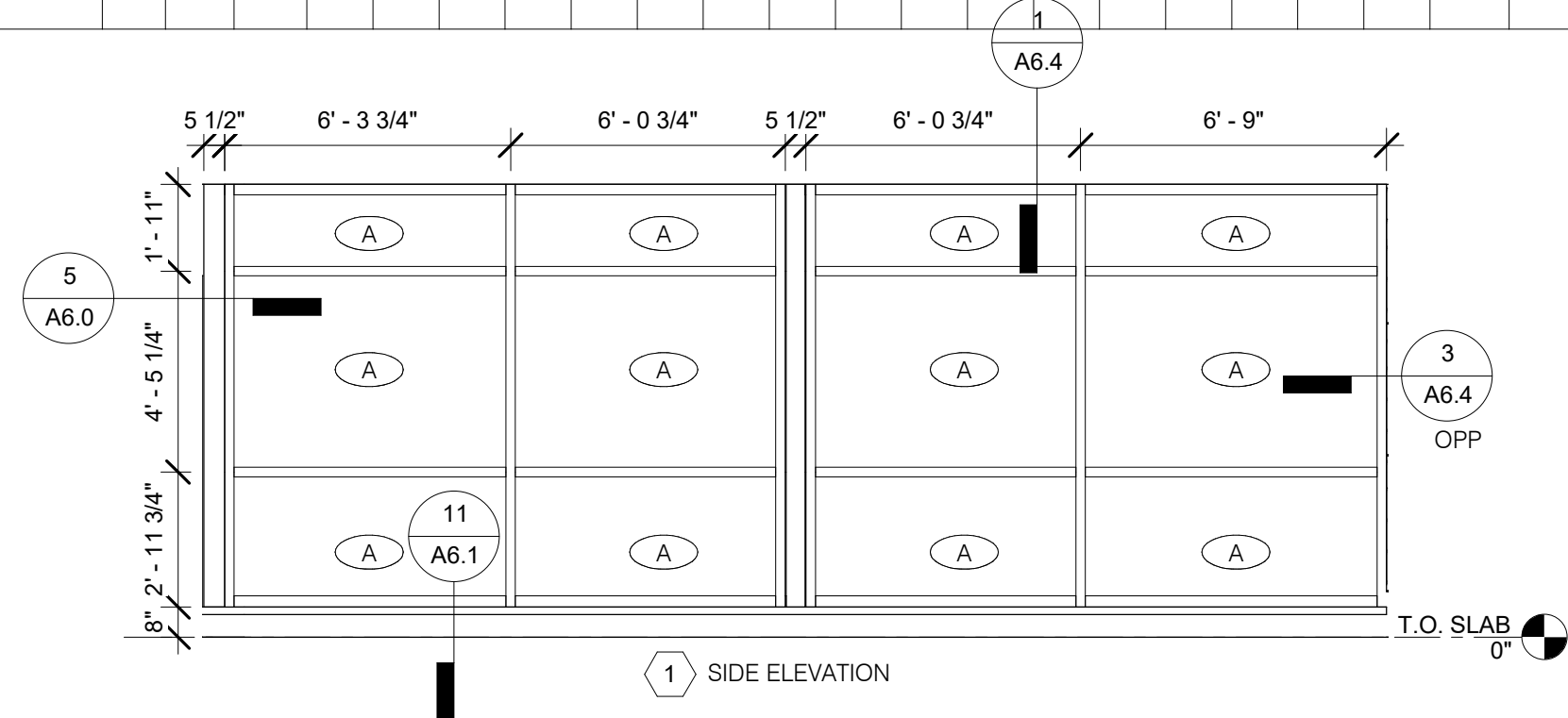
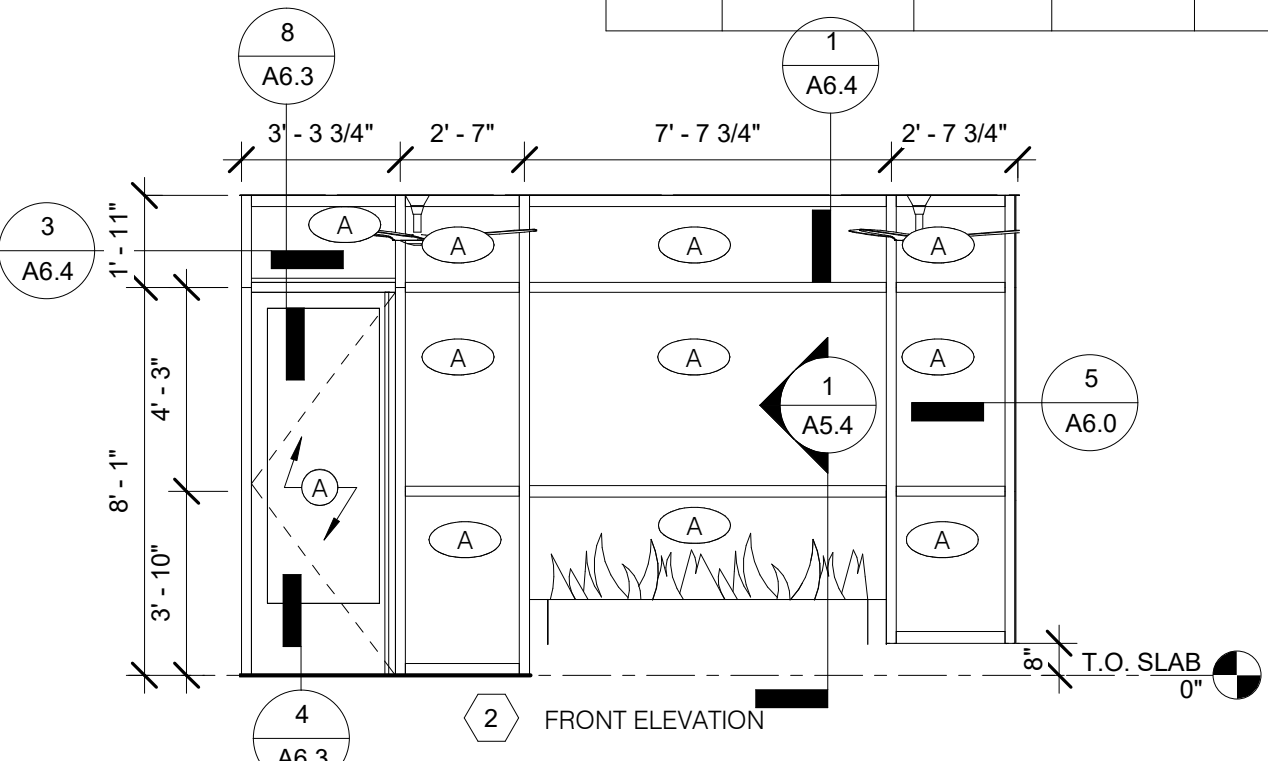
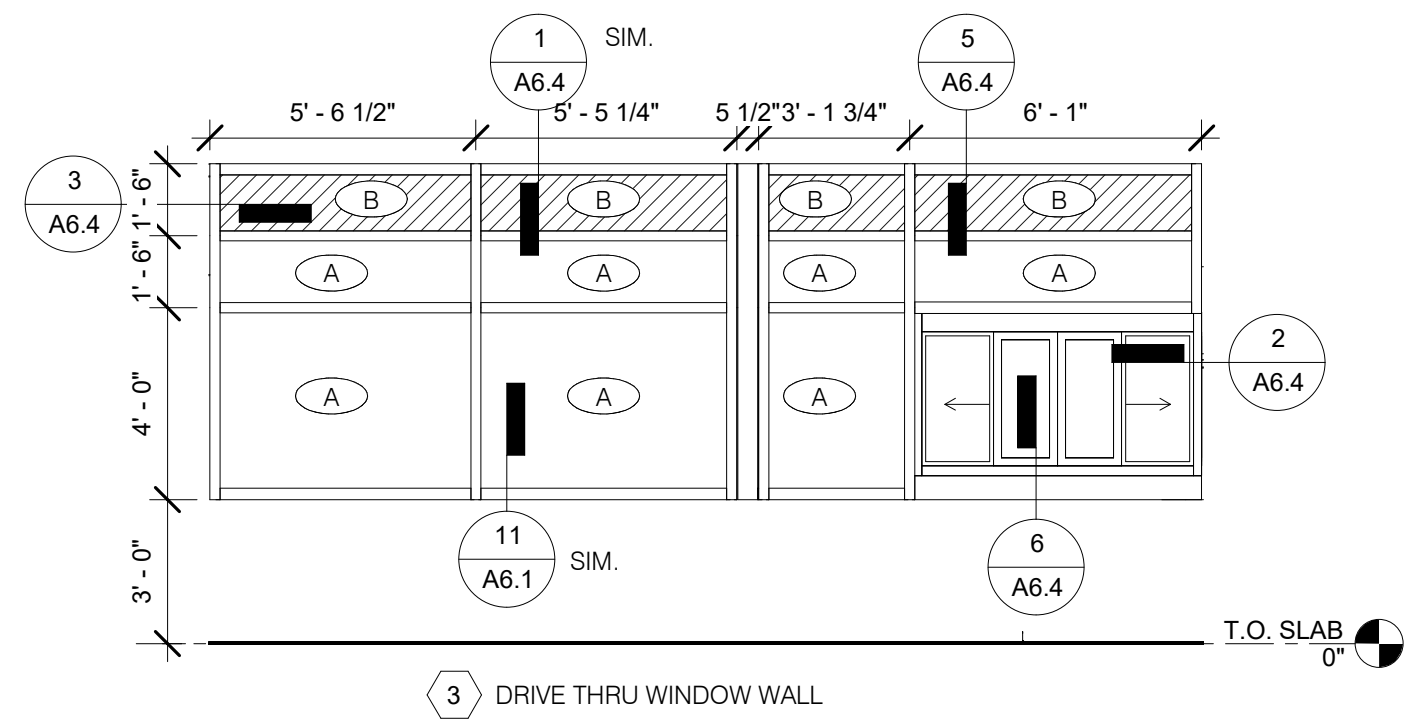
- LAMINATE DOORS 4, 5, & 6 AND PAINT FRAMES 4, 5, & 6. SEE FINISH SCHEDULE. SHEET A7.2.
- ALL HARDWARE SHALL BE US32D U.O.N.
- ALL HM FRAMES SHALL BE 16 GA STEEL U.O.N.
- ALL LOCKS SHALL BE FALCON 6 PIN INTERCHANGEABLE CORE SUPPLIED AND INSTALLED BY THE G.C. ALL EXTERIOR LOCKS SHALL BE PROVIDED WITH CONSTRUCTION CORES. ALL PERMANENT CORES SHALL BE KEYPED ALIKE. PERMANENT CORES SHALL BE SHIPPED TO THE RESTAURANT GENERAL MANAGER.
- MOUNT DOOR CLOSERS ON RESTROOM OR KITCHEN SIDE ONLY. COMPLETE DOOR, FRAME AND HARDWARE PACKAGE INCLUDING: VISION PANEL (WITH 18 GA. HOLLOW METAL FRAME), CONTINUOUS HINGE, HEAVY DUTY CLOSER, RAIN DRIP, DOOR BOTTOM/ SWEEP, WEATHERSTRIP, KICKPLATE AND PANIC HARDWARE. PROVIDED BY RSCS FACILITIES CONNECTIONS. PROVIDE PUSH/ PULL PLATES. IF REQUIRED BY LOCAL CODE, STOREFRONT DOOR PANIC HARDWARE SHALL BE : DOR-O-MATIC 2092 RIM PANIC HARDWARE AND EXTERIOR PULLS WITH QUALITY #520 DOOR PULL.
- MOUNT KICKPLATE ON PUSH SIDE ONLY.
- MAXIMUM DOOR OPERATING PRESSURE : 5 LBS INTERIOR : 15 LBS EXTERIOR.
- ADA COMPLIANT ACCESSIBILITY SIGNAGE WHERE REQUIRED (OR AS REQUIRED BY LOCAL JURISDICTION) - (1) MEN; (2) WOMEN; (3) EXIT
- INSTALL WITH REMOVABLE DOOR STOPS AND WEATHER STRIPS.
- PROVIDE LATCH AND STRIKE PLATE HARDWARE BY DOOR MFR. TO BE COMPATIBLE WITH LOCKS.
- PROVIDE MANUFACTURER'S INTEGRAL ASTRAGAL GC TO TRIM DOOR SWEEP TO FIT DOOR

Mark S. Salopek, LLC

3638 West Galloway Drive
Richfield, OH 44286
330.572.2100 Fax: 330.572.2102

NOTES N.T.S. **4**

DOOR SCHEDULE NOTES N.T.S. **1**



| DOOR NO. | NAME | DOOR SIZE | | | TYPE | DOOR | FRAME | BUTTS | LOCKS | CLOSERS | KICKPLATE | THRESHOLD | DOOR STOP | MISCELLANEOUS | DETAIL LOCATIONS | | | DOOR NOTES |
|----------|-----------------|------------|------------|-----------|------|------|-------|-------|-------|---------|-----------|-----------|-----------|---------------|------------------|--------|--------|--|
| | | WIDTH | HEIGHT | THICKNESS | | | | | | | | | | | HEAD | JAMB | SILL | |
| 1A | ENTRY | 3'-0 1/4" | 9'-9 1/2" | 1 3/4" | A | AL | AL | X | | | | | | X | 8/A6.3 | 4/A6.3 | 4/A6.3 | DOOR AND FRAME - DARK BRONZE FINISH - 4, 5, 7, 8, 10, 13, 15 |
| 1B | ENTRY | 2'-11 3/4" | 9'-9 1/2" | 1 3/4" | A | AL | AL | X | X | X | | | | X | 8/A6.3 | 4/A6.3 | 4/A6.3 | DOOR AND FRAME - DARK BRONZE FINISH - 4, 5, 8, 10, 13, 15 |
| 2 | ENTRY | 3'-0" | 7'-11 3/4" | 1 3/4" | A | AL | AL | X | X | X | | | | X | 3/A6.3 | 4/A6.3 | 4/A6.3 | DOOR AND FRAME - DARK BRONZE FINISH - 4, 5, 8, 10, 13, 15 |
| 3 | | 3'-0" | | | 1" | | | | | | | | | | | | | |
| 4 | MENS RESTROOM | 3'-0" | 6'-8" | 1 3/4" | C | WD | HM | X | | | X | X | | X | 5/A6.3 | 5/A6.3 | | DL-1 LAMINATE FINISH - 1, 2, 3, 4, 6, 9, 10, 11 |
| 5 | WOMENS RESTROOM | 3'-0" | 6'-8" | 1 3/4" | C | WD | HM | X | | | X | X | | X | 5/A6.3 | 5/A6.3 | | DL-1 LAMINATE FINISH - 1, 2, 3, 4, 6, 9, 10, 11 |
| 6 | CLOSET | 2'-0" | 6'-8" | 1 3/4" | D | WD | HM | X | | | | | X | | 5/A6.3 | 5/A6.3 | | DL-1 LAMINATE FINISH - 1, 2, 3, 10 |
| 10 | SECURITY | 2'-6" | 7'-0" | 1 3/4" | B | HM | HM | X | X | X | X | X | | X | 6/A6.3 | 2/A6.3 | 7/A6.3 | DOOR AND FRAME - DARK BRONZE FINISH - 4, 5, 7, 8, 10, 13, 15 |

| | |
|----------|-------------------|
| 04/06/18 | ISSUED FOR PERMIT |
| 07/25/18 | ISSUED FOR BID |
| | |
| | |
| | |
| | |
| | |
| | |
| | |
| | |

CONTRACT DATE: 01.08.18
BUILDING TYPE: T40M-O
PLAN VERSION: FEB 2018
BRAND DESIGNER: GPD GROUP
SITE NUMBER: 312032
STORE NUMBER: 2018088.03

TACO BELL
5070 W. ATLANTIC BLVD.
DELRAY BCH, FL 33484

TACO BELL
T40
OPEN KITCHEN
CALIFORNIA SOL

DOOR AND WINDOW ELEVATIONS & SCHEDULES

A1.1

PLOT DATE: 7/25/2018 3:04:21 PM

WINDOW TYPES 1/4" = 1'-0" **5**

DOOR TYPES **3**

EQUIPMENT SCHEDULE

| NO. | QTY | G.C. INSTALL | NO. | ITEM DESCRIPTION | MFR. & MODEL NUMBER | PLUMB | ELECT | GAS | REMARKS |
|---------------------------------------|-----|--------------|-----|--|---|-------|-------|-----|------------------------|
| B CONTRACTOR BUILDING ELEMENTS | | | | | | | | | |
| B-049 | 1 | X | | ROOF LADDER | PRECISION #FL184 | | | | 15'-4" W/ 8" EXTENSION |
| B-219 | 1 | X | | WATER HEATER DUNNAGE RACK | NEW AGE INDUSTRIAL CORP., INC #98147 | X | X | | |
| B-241 | 3 | X | | SOAP DISPENSER (WALL MOUNT) | KAY 3741 | | | | |
| B-251 | 2 | X | | SANITIZER DISPENSER (WALL MOUNT) | KAY 3741 | | | | |
| B-253 | 2 | X | | PAPER TOWEL DISPENSER / TRASH 12 GALLON | BOBRICK #B-3944 | | | | |
| B-265 | 2 | X | | MIRROR, 18" x 36" | BOBRICK #B-165-1836 | | | | |
| B-275 | 2 | X | | TOILET PAPER DISPENSER | BOBRICK #B-2890 | | | | |
| B-290 | 1 | X | | PAPER TOWEL DISPENSER | BOBRICK #B-262 | | | | |
| B-300 | 2 | X | | GRAB BAR 1-1/2" DIA. x 36" S.S. FIN. | BOBRICK #B6806X36 | | | | |
| B-305 | 2 | X | | GRAB BAR 1-1/2" DIA. x 42" S.S. FIN. | BOBRICK #B6806X42 | | | | |
| B-310 | 2 | X | | GRAB BAR VERTICAL 1-1/2" DIA. x 18" S.S. FIN. | BOBRICK #B6806X18 | | | | |
| B-381 | 1 | X | | CO2 CARBON DIOXIDE SENSOR/WARNING | AMPROBE CO2-200 | | X | | |
| B-400 | 1 | X | | WASTE BASKET - 32 GALLON | RUBBERMAID #2632 (GREY) | | | | |
| B-405 | 5 | X | | WASTE BASKET | RUBBERMAID SLIM JIM #3541 (GREY) | | | | |
| B-406 | 3 | X | | WASTE BASKET | RUBBERMAID 28 QT #2956 (BLACK) | | | | |
| B-410 | 1 | X | | SANITARY NAPKIN RECEPTACLE | RUBBERMAID #6140 | | | | |
| B-599 | 1 | X | | MOP SINK STATION | ISS #WST806Y | | | | |
| B-X01 | 1 | X | | FIREPLACE (2) - 40" UNITS | DIMPLEX OPTI-MYST PRO 1000, #CDFI1000-PRO | X | X | | |
| B-X10 | 1 | X | | 120 GALLON SOLAR STORAGE TANK WITH INTERNAL COIL HX, 28" DIAM. | LOCHINVAR 120 GALLON SOLAR STORAGE TANK | X | | | |
| B-X11 | 1 | X | | 3-GALLON EXPANSION TANK | CALEFFI APS-EXP-3G | X | | | |
| B-X12 | 1 | X | | SOLARHOT PUMP STATION | SOLARHOT APS-SOLVELOX PS | X | X | | |
| B-X13 | 1 | X | | TANKLESS WATER HEATER, 199,000BTUH | LOCHINVAR | X | X | X | |
| B-X14 | 1 | X | | SOLAR WATER HEATER DATA LOGGER | RESOL. DL2 | | X | | |
| B-X15 | 1 | X | | SOLAR WATER HEATER CONTROL PANEL | RESOL. DELTASOL BX | | X | | |
| B-XX1 | 1 | X | | 60"W X 36"H DRIVE-THRU WINDOW | QUICKSERV | | | | |

C COOKING EQUIPMENT

| | | | | | | | | | |
|-------|---|---|--|------------------------------|-------------------------------------|---|---|---|----------------------------|
| C-026 | 1 | X | | FRYER | PITCO #TB-SSHLV14-2/FD | | X | X | |
| C-107 | 1 | X | | REETHERMALIZER | PITCO #TB-SRTG14-2 | X | X | X | |
| C-203 | 2 | X | | SPLIT LID CLAM SHELL TOASTER | DOUGHPRO #SL1575TBA (STAR OPTIONAL) | | X | | POWERED BY PRODUCTION LINE |
| C-254 | 2 | X | | CHEESE MELTER (SINGLE) | A. J. ANTUNES # CM-100 | X | X | | POWERED BY PRODUCTION LINE |
| C-400 | 1 | X | | COOK TIMER | FAST #TBZAP12 | | X | | FOR THE RETHERMALIZER |

E EXHAUST HOODS/FIRE SUPP.

| | | | | | | | | | |
|-------|---|---|--|---------------------------------------|--|--|---|--|---|
| E-107 | 1 | X | | STRATOVENT 6'-3" EXHAUST HOOD | STRATOVENT MODEL # TBG3650SVBD6FT3IN | | X | | HOOD IS PRE-PIPED FOR ANSUL SUPPRESSION |
| E-108 | 1 | X | | STRATOVENT 106"H X 111" L BACK SPLASH | STRATOVENT MODEL #BACKSPLASH106X111FLA | | | | |
| E-272 | 1 | X | | TIMER BRACKET | | | X | | |

F OFFICE/EMPLOYEE/MUSIC/MISC.

| | | | | | | | | | |
|-------|---|---|--|---|----------------------------------|---|---|--|--------------------------------|
| F-014 | 1 | X | | FILE CABINET (2 DRAWER HIGH) 18" x 36" x 27"H | HON #582LL | | | | IN OFFICE AREA. SEE SHEET A8.2 |
| F-021 | 1 | X | | CHAIR - OFFICE | HON #4609AB10 | | | | IN OFFICE AREA. SEE SHEET A8.2 |
| F-022 | 1 | X | | LICENSE FRAME 8" X 10" (BLACK) | CREATIVE PALETTE TB30 | | | | IN OFFICE AREA. SEE SHEET A8.2 |
| F-026 | 1 | X | | DESK LAMP | EUR# EL01E | | | | IN OFFICE AREA. SEE SHEET A8.2 |
| F-030 | 2 | X | | COAT HOOKS | ISS #HOOK246R2Y | | | | |
| F-040 | 1 | | | OFFICE COMPUTER | POS PROVIDED | X | | | IN OFFICE AREA. SEE SHEET A8.2 |
| F-050 | 1 | | | CREDIT CARD SATELLITE ROUTER JUNCTION | YUM | | | | |
| F-060 | 1 | | | MONITOR - OFFICE | YUM | | | | |
| F-080 | 1 | | | OFFICE PRINTER/COPIER/FAX/SCANNER | POS PROVIDED | | X | | |
| F-090 | 5 | | | UPS (UN-INTERUPTABLE POWER SUPPLY) | POS PROVIDED | | X | | |
| F-102 | 1 | | | MONEY COUNTER | TELLER MATE #TIXR3000 | | X | | |
| F-131 | 1 | | | MUSIC SYSTEM | MUZAK #6848 | | | | |
| F-165 | 3 | X | | DROP SAFE | PERMA VAULT #PRO-10 | | | | |
| F-174 | 1 | X | | SAFE WITH TOUCH SCREEN CONTROLS | BRINKS TIDEL SENTINAL SIDE VAULT | | X | | |
| F-211 | 1 | X | | CLOCK | B&B SYSTEMS #02100100 | | | | IN OFFICE AREA. SEE SHEET A8.2 |
| F-262 | 1 | X | | EMPLOYEE LOCKERS - 6 COUNT | 12 X 15 X 72 GREY | | | | |
| F-270 | 1 | X | | FIRST AID KIT | PROSTAT FIRST AID LLC #2617 | | | | IN OFFICE AREA. SEE SHEET A8.2 |
| F-500 | 1 | X | | STACKABLE HIGH CHAIR | KOALA #KOA-KB103-01 | | | | |
| F-915 | 2 | X | | FLOOR MAT 3' X 5' | ENTRANCE, INC. #41150012 | | | | |

K WORKSTATIONS/SHELVING/CARTS

| | | | | | | | | | |
|-------|---|---|--|---------------------------------------|----------------|--|--|--|------------------|
| K-210 | 1 | X | | PREP SINK WORKSTATION 50" TRACK | ISS #WST255E | | | | |
| K-221 | 1 | X | | 3 COMP SINK WORKSTATION 96" TRACK | ISS #DS-1F | | | | |
| K-379 | 1 | | | FRY WORKSTATION 42"W x 30"D x 75"H | ISS # WST1710E | | | | |
| K-525 | 1 | | | 48X18 5-TIER RACK SHELVING | ISS #TBD | | | | |
| K-554 | 3 | | | 48X24 5-TIER RACK SHELVING | ISS #TBD | | | | |
| K-602 | 2 | | | 36X18 5-TIER RACK SHELVING | ISS #TBD | | | | |
| K-657 | 3 | | | 72X24 5-TIER RACK SHELVING | ISS #TBD | | | | |
| K-698 | 1 | | | 24X18 5-TIER RACK SHELVING | ISS #TBD | | | | |
| K-699 | 7 | | | 60X18 5-TIER RACK SHELVING | ISS #TBD | | | | |
| K-750 | 1 | X | | WATER SOFTENER UNIT HOLDER 14"X30"X9" | ISS #WATRK230Y | | | | OPTIONAL INSTALL |
| K-XX9 | 2 | | | 24X24 5-TIER RACK SHELVING | ISS #TBD | | | | |

L LIGHTING/SIGNAGE/MENUBOARDS

| | | | | | | | | | |
|-------|---|---|--|--|-------------------|--|--|--|--------------------------|
| L-132 | 1 | | | SIGN- TACO BELL RESTROOM WOMEN WITH BRAILLE 10'X6.5" | | | | | |
| L-133 | 1 | | | SIGN- TACO BELL RESTROOM MEN WITH BRAILLE 10'X6.5" | | | | | |
| L-150 | 1 | X | | SECURITY DOOR DANGER SIGN | ADVERCO#ADVCUSTOM | | | | ORDERED DIRECT FROM YRFS |
| L-949 | 3 | X | | NO SMOKING SIGN | VOLLRATH #4513 | | | | |
| L-XX1 | 1 | | | INTERIOR MENU BOARD DISPLAYS | LG #TBD | | | | |

N SINKS/DISHWASHERS

| | | | | | | | | | |
|-------|---|---|--|---|--------------------------------------|---|---|--|---|
| N-053 | 1 | X | | 3-COMP POWER SOAK 95"L x 31"D (L TO R) | METCRAFT #TBD | X | X | | W/ PRE-RINSE, CLICK & CLEAN SYSTEM & (2) T & SB-2466 FAUCETS OPTIONAL - N-706, N-075, N-076, N-077, N-078 |
| N-062 | 2 | X | | HAND SINK WITH FAUCET | AERO #HSK-A | X | | | |
| N-071 | 1 | X | | MOP SINK FAUCET | T&S #B-2465 | X | | | |
| N-130 | 1 | X | | 1 COMP SINK FAUCET | T&S FAUCET B-2465 | X | | | |
| N-146 | 2 | X | | FAUCET (RESTROOMS) | SLOAN # SF-2350 | X | | | FRANCHISE OPTION N-164 T&S B-2460 |
| N-171 | 1 | X | | 1 COMP. SINK WASTE DRAIN LEVER | T&S FAUCET S-20 | X | | | 2" TWIST TYPE, FOR N-698 |
| N-208 | 1 | X | | MOP SINK 24"X24" FLOOR MOUNT SINK | AERO MANUF. CO., INC. #3MP-2121-61/P | X | | | INCLUDES (2) 24"X36" WALL PANELS |
| N-698 | 1 | X | | 1 COMP PREP SINK 53"W X 27"D X 35 1/2"H | AERO #2F1211617LR | X | | | |

P FOOD PREPARATION

| | | | | | | | | | |
|-------|---|---|--|------------------------------|----------------------------|---|---|--|-------------------------------------|
| P-001 | 1 | X | | V-LINE | | | | | |
| P-002 | 1 | X | | V-LINE | | | | | |
| P-314 | 2 | X | | WATER PRESSURE REGULATOR KIT | A.J. ANTUNES & CO #7000314 | X | | | FOR PRODUCTION LINE |
| P-315 | 1 | X | | REVERSE OSMOSIS SYSTEM | CUNO #FSTM-07 | X | | | REQUIRES FLOOR SINK |
| P-417 | 1 | X | | 8 CHANNEL TIMER | FAST # KTRACK 2X4 TB | | X | | ALTERNATE- PRINCE CASTLE # 755HM8TB |
| P-452 | 2 | X | | HOT WATER SYSTEM | BUNN-MACHINE #43600.0014 | X | X | | |
| P-550 | 1 | X | | KNIFE RACK | EDLUND #KR-699 | | | | |
| P-673 | 1 | | | WORKTABLE, 36" x 30" | ISS #WST908YA | | | | |

EQUIPMENT SCHEDULE

| NO. | QTY | G.C. INSTALL | NO. | ITEM DESCRIPTION | MFR. & MODEL NUMBER | PLUMB | ELECT | GAS | REMARKS |
|--------------|-----|--------------|-----|---------------------------------|---------------------|-------|-------|-----|---------|
| PATIO | | | | | | | | | |
| T-080 | 1 | | | SINGLE TRASH ENCLOSURE | | | | | LARGE |
| T-452 | 2 | | | 30' X 48' PLYWOOD TABLE TOP ADA | | | | | LARGE |
| T-752 | 4 | | | RAILING + BENCH 48" | | | | | LARGE |
| T-753 | 3 | | | RAILING + BENCH 60" | | | | | LARGE |
| T-754 | 2 | | | 16' EXTERIOR RAILING | | | | | LARGE |
| T-XX1 | 6 | | | VEKINAS SIDE CHAIR BY KIAN | | | | | LARGE |
| T-XX2 | 2 | | | INTERLACE DINING TABLE BY KIAN | | | | | LARGE |

R REFRIGERATION

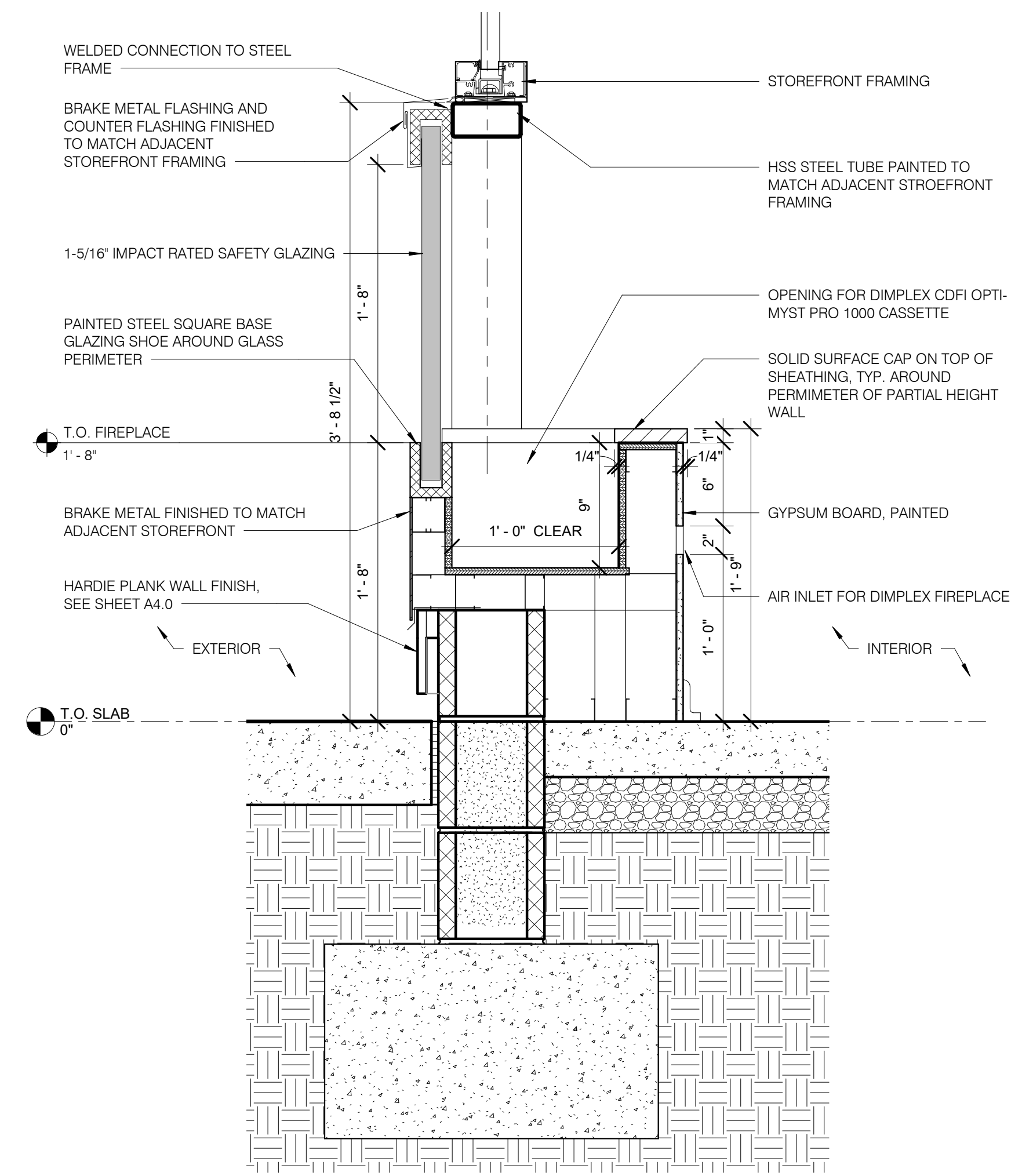
| | | | | | | | | | |
|-------|---|---|--|-----------------------------|--------------------|---|---|--|---|
| R-929 | 1 | X | | FULL HT FREEZER (RH HINGED) | DELFIELD #GBF1P-SH | | X | | OPTIONAL: R-038 U/C FREEZER - DELFIELD #407CA-DHL-TB3 |
| R-XX1 | 2 | X | | REMOTE ICE CUBE MACHINE | MANITOWOC | X | X | | |

S SERVING/DRIVE-THRU

| | | | | | | | | | |
|---------------|---|---|--|---|---------------------------------|---|---|---|---|
| S-023 | 1 | X | | WARMER EVO TACO TOWER TB 208V - R TO L UNIT | CARTER HOFFMAN # EVOL208 | | X | | MOUNT TO PRODUCTION LINE |
| S-024 | 1 | X | | WARMER EVO TACO TOWER TB 208V - L TO R UNIT | CARTER HOFFMAN # EVOR208 | | X | | MOUNT TO PRODUCTION LINE |
| S-026 | 2 | X | | HEAT CABINET - FULL HEIGHT - (1) RH | CRESCOR #H137S27D1TB | | X | | |
| S-204 | 1 | X | | DRIVE-THRU TIMER SYSTEM | HME #C11422TB | | X | | |
| S-254 | 1 | | | CONDIMENT RACK | PRONTO PRODUCTS #CHPW0446 | | | | |
| S-274 | 1 | X | | 61"(W) X 36"(D) DRIVE-THRU DRINK / POS TABLE | SPG WST1242YA | | | | |
| S-284 | 1 | X | | BEVERAGE DISPENSER | | X | X | | |
| S-285 | 1 | X | | BEVERAGE DISPENSER | | X | X | | OR CORNELIUS IDC255 PROGATE 5 (BY PEPSI) |
| S-286 | 1 | X | | WATER FILTER SYSTEM | SHURFLO #WB6-M3-22-003 | X | X | | FRANCHISEES CAN USE SELECTO #TBS/620-5 |
| S-349 / S-277 | 1 | | | PICK-UP DRIVE-THRU COUNTER (30' x 42') WITH 24" CONDIMENT STAND | LPSPG #WST 1344Y | | | | |
| S-444 | 1 | | | NAPKIN DISPENSER | SCA TISSUE #5555100 | | | | |
| S-458 | 1 | X | | 24"(W) X 36"(D) FRUTISTA TABLE | SPG WST1343Y | | | | |
| S-482 | 3 | | | | | | | | |
| S-489 | 2 | | | DIGITAL SCALE | EDLUND DS-10 | | | | FRANCHISEES CAN USE HOSHISAKI KMS-1230 |
| S-513 | 1 | X | | ICE MAKER PLACED ON TOP OF DRINK MACHINE | MANITOWOC # IY-1474C | X | X | | WITH REMOTE MOUNTED CONDENSORS |
| S-540 | 1 | X | | PEPSI BOOSTER TANK | | X | X | | SEE SCOPE OF WORK (PEPSI) |
| S-544 | 2 | | | TEA URNS | BUNN TDO-N-3.5 | | | | 3.5 GAL NARROW ICED BEVERAGE DISPENSER |
| S-546 | 1 | X | | ICED TEA BREWER | TETLEY TB3Q | X | X | | |
| S-547 | 1 | | | BUNN POD BREWER | MY CAFE AP AUTOPOD # 42300.0008 | | X | | |
| S-550 | 1 | | | BAG-IN-BOX SYRUP RACK | CORNELIUS/REMCOR BNB12B8P | X | | | FLO-3REG-2CRB (BY PEPSI) |
| S-570 | 2 | | | CARBONATOR | CORNELIUS/REMCOR | X | X | | SHELF MOUNTED BELOW EACH DRINK (BY PEPSI) |
| S-580 | 1 | | | CO2 (BULK) TANK | MVE #11805373 | | | | |
| S-600 | 2 | X | | BUNDLED SYRUP LINES | CORNELIUS/REMCOR TUBE BUNDLE | | X | | |
| S-739 | 1 | X | | FROZEN BEVERAGE DISPENSER | FBD #1273610021 | | X | X | |
| S-740 | 1 | | | REMOTE CONDENSOR FOR FROZEN BEVERAGE DISPENSER | FBD #12-3003-0006 | | X | X | |
| S-XX2 | 1 | X | | FLY FAN | TBD | | | | |

T-FURNITURE

| | | | | | | | | | |
|--------|----|--|--|------------------------------------|---------|--|--|--|--|
| T-101A | 16 | | | CHAIR - WOOD SEAT/ METAL BACK | | | | | |
| T-201A | 10 | | | 29" BARSTOOL | Generic | | | | |
| T-401B | 1 | | | HUB TABLE (SLICK BLUE) | | | | | |
| T-404C | 4 | | | 24" X 20" TABLE TOP AND ROUND BASE | | | | | |
| T-408C | 1 | | | 24"X48"X30" ADA TABLE | | | | | |
| T-706 | 1 | | | SINGLE TRASH RECEPTACLE | | | | | |
| TL-XX1 | 1 | | | | | | | | |



FIREPLACE SECTION DETAIL N.T.S. **1**

| | |
|----------|-------------------|
| 04/06/18 | ISSUED FOR PERMIT |
| 07/25/18 | ISSUED FOR BID |
| | |
| | |
| | |
| | |
| | |
| | |
| | |
| | |

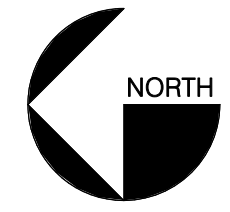
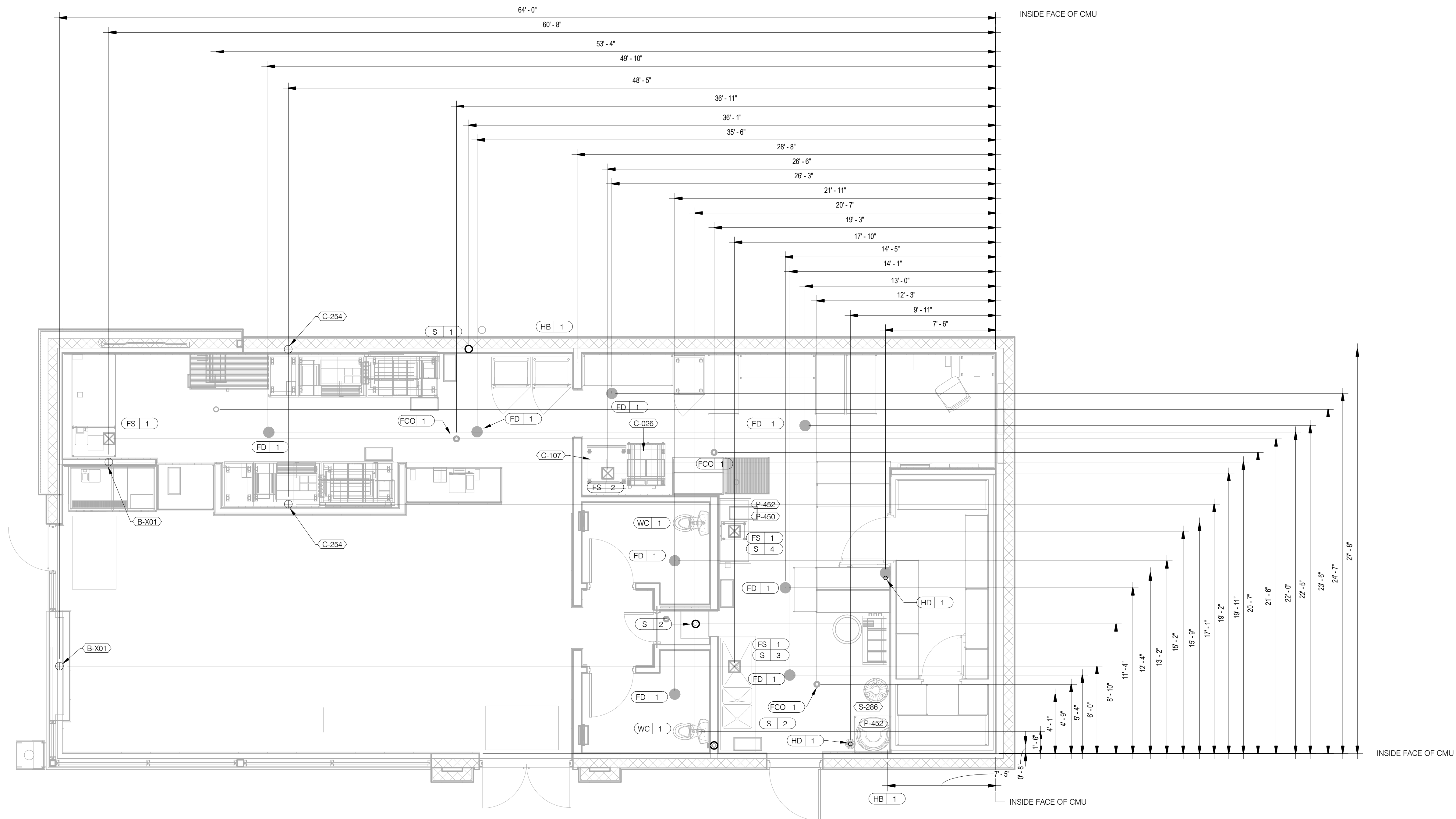
| | |
|-----------------|------------|
| CONTRACT DATE: | 01.08.18 |
| BUILDING TYPE: | T40CAL-SOL |
| PLAN VERSION: | FEB 2018 |
| BRAND DESIGNER: | GPD GROUP |
| SITE NUMBER: | 312032 |
| STORE NUMBER: | 2018088.03 |

TACO BELL
5070 W. ATLANTIC BLVD.
DELRAY BCH, FL 33484



WALL SECTIONS

A5.4



PLUMBING ROUGH-IN PLAN 1/4" = 1'-0" **1**

| EQUIP # | EQUIPMENT ITEM | TYPE | ELEVATION | REMARKS | EQUIP # | EQUIPMENT ITEM | TYPE | ELEVATION | REMARKS |
|---------|--------------------------|-------|-----------------|----------------------------|---------|---------------------------|-------|-------------|-------------------------------|
| FS 1 | FLOOR SINK | | | -- | S 3 | 3-COMPARTMENT SINK FAUCET | CW/HW | +38" A.F.F. | -- |
| FS 2 | FLOOR SINK | | | EPOXY COATED CAST IRON | S 4 | PREP SINK | W | +19" A.F.F. | -- |
| HD 1 | HUB DRAIN | | | -- | S 4 | PREP SINK FAUCET | CW/HW | +38" A.F.F. | -- |
| WH 1 | WATER HEATER | CW | | -- | WCO 1 | WALL CLEAN OUT | | | -- |
| WH 1 | WATER HEATER | G | +15" A.F.F. | -- | FCO 1 | FLOOR CLEAN OUT | | | -- |
| WC 1 | WATER CLOSET FLUSH VALVE | CW | +29" A.F.F. | BOTH HANDICAP AND REGULAR | HB 1 | HOSE BIB | | | -- |
| UR 1 | URINAL FLUSH VALVE | CW | +47" A.F.F. | WALL MOUNTED | B-X01 | FIRE PLCE | HW | +12" A.F.F. | |
| UR 1 | URINAL WASTE STUB | W | +16-1/2" A.F.F. | WALL MOUNTED | C-107 | RE THERMALIZER | HW | +8" A.F.F. | |
| L 1 | LAVATORY | TW | +20" A.F.F. | -- | C-107 | RE THERMALIZER | G | +12" A.F.F. | |
| L 1 | LAVATORY WASTE LINE | W | +16-1/2" A.F.F. | -- | C-026 | DUAL VAT FRYER | G | +12" A.F.F. | |
| RO 1 | REVERSE OSMOSIS | CW | +84" A.F.F. | -- | C-254 | CHEESE MELTER | FW | +12" A.F.F. | |
| S 1 | HAND SINK | TW | +18" A.F.F. | RIM OF LAV @ +2'-8" A.F.F. | S-286 | WATER FILTER SYSTEM | CW | +94" A.F.F. | INLET TO & OUTLET FROM FILTER |
| S 2 | MOP SINK | W | -6" A.F.F. | RECESSED IN FLOOR | P-452 | HOT WATER SYSTEM | CW | +24" A.F.F. | |
| S 2 | MOP SINK FAUCET | CW/HW | +36" A.F.F. | -- | | | | | |
| S 2 | MOP SINK FAUCET | CW/HW | +42" A.F.F. | CLOSET MOP SINK ONLY | | | | | |
| S 3 | 3-COMPARTMENT SINK | W | +19" A.F.F. | -- | | | | | |

PLUMBING ROUGH-IN SCHEDULE NTS **4**

- HOT WATER
- COLD WATER
- TEMPERED WATER
- ⊠ GAS
- ⊖ FLOOR DRAIN
- ⊠ FLOOR SINK
- HUB DRAIN
- ◆ WASTE OUTLET
- ⊖ FLOOR CLEANOUT
- ⊖ WALL CLEANOUT
- FILTERED WATER
- ◇ VENT UP FROM UNDER SLAB
- WATER LINE THRU FLOOR

SYMBOL LEGEND NTS **3**

- ALL DIMENSIONS TO FLOOR SINKS, FLOOR DRAINS AND HUB DRAINS ARE TO CENTER OF FIXTURE.
- IT IS THE RESPONSIBILITY OF THE CONTRACTOR TO COORDINATE THIS DATA ON THE LOCATION OF ALL PLUMBING ROUGH-INS WITH INFORMATION PROVIDED ON THE ARCHITECTURAL AND STRUCTURAL DRAWINGS AND THE EQUIPMENT ACTUALLY SUPPLIED AND TO CONFIRM THE CORRECTNESS OF ANY DIMENSIONS INDICATED HEREIN.

PLUMBING ROUGH-IN NOTES NTS **2**

| | |
|----------|-------------------|
| 04.06.18 | ISSUED FOR PERMIT |
| 07.25.18 | ISSUED FOR BID |
| | |
| | |
| | |
| | |
| | |
| | |
| | |
| | |

CONTRACT DATE: 01.08.18
 BUILDING TYPE: T40M-O
 PLAN VERSION: FEB 2018
 BRAND DESIGNER: GPD GROUP
 SITE NUMBER: 312032
 STORE NUMBER: 2018088.03

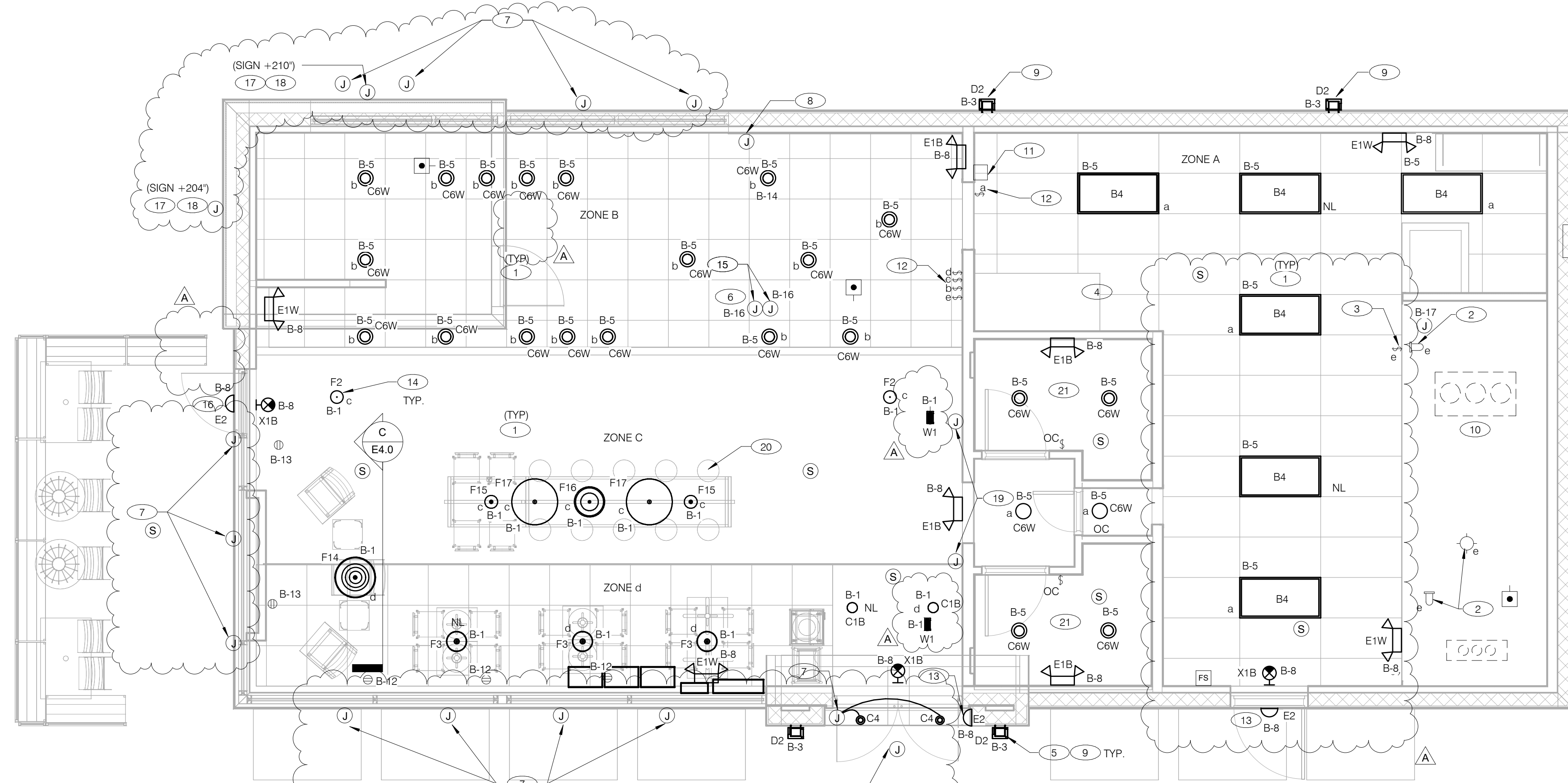
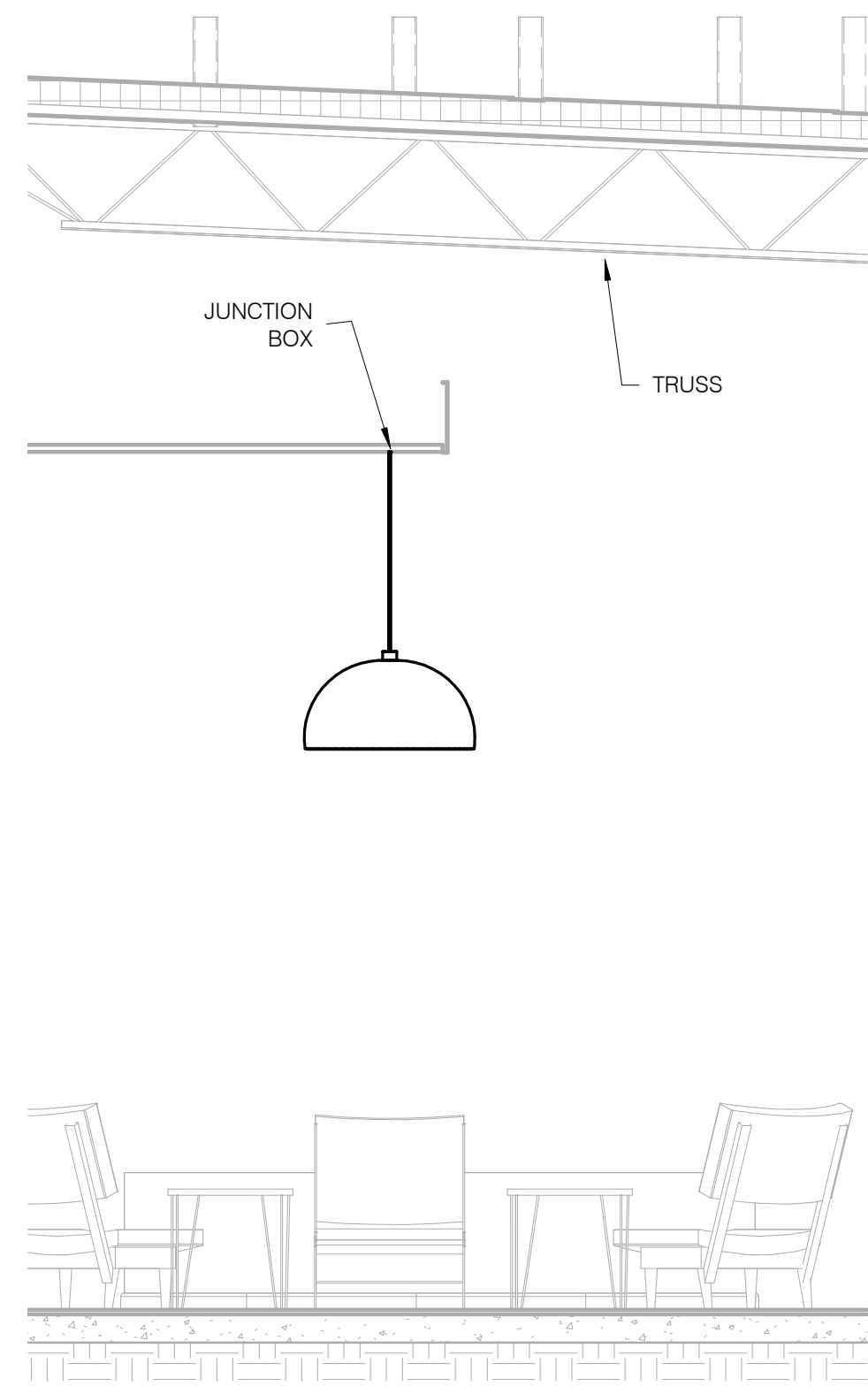
TACO BELL
 5070 W ATLANTIC BLVD.
 DELRAY BCH, FL 33484

TACO BELL
 T40
 OPEN KITCHEN
 CALIFORNIA SOL

PLUMBING ROUGH-IN PLAN

P4.0

PLOT DATE: 7/25/2018 3:13:01 PM



- GENERAL NOTES:**
- A. CONFIRM LIGHTING FIXTURE QUANTITIES WITH SUPPLIER.
 - B. EMERGENCY AND NORMAL LIGHTING MARKED WITH 'NL' SUBSCRIPT SHALL OPERATE CONTINUOUSLY. PROVIDE UNSWITCHED HOT TO NORMAL AND EMERGENCY BALLAST.
 - C. EMERGENCY LIGHTING NOT MARKED WITH 'NL' SUBSCRIPT SHALL OPERATE UNDER CONTROL OF LIGHTING SWITCH AS INDICATED. PROVIDE UNSWITCHED CONSTANT HOT TO EMERGENCY BALLAST AND SWITCHED HOT TO NORMAL BALLAST.
 - D. ALL CONDUITS ENTERING OR LEAVING COOLER/FREEZER SHALL BE PROVIDED WITH SEAL-OFF FITTING WITH COMPOUND PER NEC 300-(7a).
 - E. ALL INTERIOR LIGHTING CIRCUITS TO BE WIRED THROUGH TBCCB. SEE E6.0 THROUGH E6.3.
 - F. CONTRACTOR TO FIELD VERIFY CEILING TYPE AND PROVIDE PROPER MOUNTING HARDWARE.
 - G. ALL FIXTURES SUPPLIED WITH LAMPS.
 - H. ALL EXTERIOR NON-EMERGENCY LIGHT FIXTURES, BUILDING SIGNS, AND EXTERIOR SIGNS SHALL BE CONTROLLED THROUGH PHOTOCELL AND LIGHTING CONTROL RELAYS. SEE E6.0 THRU E6.3 FOR ADDITIONAL DETAILS.

PENDANT MOUNTING DETAIL NTS

ELECTRICAL LIGHTING PLAN 1/4" = 1'-0" A

| NO. | QTY | LOCATION | MANUFACTURER | CATALOG NUMBER | DESCRIPTION | MOUNTING | LAMP #/TYPE | BALLAST TYPE | ELECTRICAL DATA | REMARKS |
|-------|-----|----------------|--------------------|---|--|--------------------------|----------------------------------|--------------|-------------------------------|---|
| A1/A4 | 7 | SITE | SOLAR ILLUMINATION | | SL34 SOLAR LED PARKING LOT LIGHT SYSTEM. SIX SYSTEMS WITH A 20' POLES, EACH FITTED WITH 120W LED LUMINAIRE, 500W OF SOLAR PANEL, A PAIR OF 12V 245A-HR AGM BATTERIES ETC | | LED | | 120 V/1-0 VA | |
| B4 | 6 | BOH | MAXLITE | MLFP-24EP-4841 | 2X4 LED TROFFER | RECESSED GRID | LED | NA | 120 V/1-45 VA | |
| C1B | 2 | FOH | TCP | LED14DR5630KB95 | LED TRIM 14W 6" RECESSED 30K 80CRI BLACK TRIM, W/ ELITE B6IC-AT-W 6" IC AIR SHUT HOUSING | RECESSED | LED | | 120 V/1-0 VA | |
| C4 | 2 | EXTERIOR | SPECTRUM LIGHTING | SPC0304INC-PAR20-SM-MB | 3" DIAMETER CYLINDER/ PAR20 LAMP/ SURFACE MOUNT/ MATTE BLACK | | (1) SOLAIS LR20/40/27K/975/8K | | 120 V/1-12 VA | |
| C6W | 23 | FOH | MAXLITE | LED14DR5630KB95 | LED TRIM 19W 6" RECESSED 30K 90CRI WHITE TRIM, W/ ELITE B6IC-AT-W 6" IC AIR SHUT HOUSING | RECESSED | LED | | 120 V/1-14 VA | |
| D2 | 4 | EXTERIOR | KICHLER | 49800BKLED | 10"x24" ASHSTON 24 COLLECTION OUTDOOR LED SCORCE | WALL | LED | | 120 V/1-10 VA | |
| E1B | 4 | FOH | ELITE | ELM-809-B | EMERGENCY LIGHT FROG EYE - BLACK | WALL, TOP @ 9'-4" U.O.N. | - | EM | 120 V/1-12 VA | |
| E1W | 4 | BOH | ELITE | ELM-809-W | EMERGENCY LIGHT FROG EYE - WHITE | WALL, TOP @ 9'-4" U.O.N. | - | EM | 120 V/1-12 VA | |
| E2 | 3 | EXTERIOR | LIGHTALARMS | CAM-SD-DB-CW | CAMRAY LED EM WALL MNT, DRK BRNZ, QLD WEATHER | UNIVERSAL | - | EM | 120 V/1-16 VA | |
| F2 | 2 | DINING ROOM | SPECTRUM LIGHTING | SPC0310LEDXT10L27KWDE1 GL CP13 PM36" MB 3 | LED PENDANT - 3" | SURFACE | 1/LED | | 120 V/1-9 VA | |
| F3 | 3 | FOH | SONNEMAN | 4933.97 | 12" DIAMETER GLASS PENDANT TRIBECCA SCORCE. MED BASE RATED 60 WATT MAX | PENDANT | (1) AAMSCO LED-4W-T10HYBRID-DIM | | 120 V/1-4 VA | STEM LENGTH APPROXIMATELY 3'-6" |
| F14 | 1 | LOUNGE PENDANT | BASELITE | HD2478-EXT/59-INT/15LC8L/C LC25 WINC MAX | 24" DEEP BOWL PENDANT, BLACK EXTERIOR/ COOPERTONE INTERIOR BLACK CORD AND CANOPY/ MEDIUM BASE | PENDANT | (1) AAMSCO LED-6W-ST64HYBRID-DIM | | 120 V/1-0 VA | |
| F15 | 2 | LOUNGE PENDANT | BASELITE | PENB/78-59INT-LBLC-BLC25WIN C MAX | PENDANT WITH CHALKBOARD BLACK EXTERIOR COPPER TONE INTERIOR BLACK CORD MED BASE | PENDANT | (1) AAMSCO LED-6W-ST64HYBRID-DIM | | 120 V/1-6 VA | |
| F16 | 1 | LOUNGE PENDANT | BASELITE | PELB/78-59INT-LBLC-BLC25WIN C MAX | PENDANT WITH CHALKBOARD BLACK EXTERIOR COPPER TONE INTERIOR BLACK CORD MED BASE | PENDANT | (1) AAMSCO LED-6W-ST64HYBRID-DIM | | 120 V/1-6 VA | |
| F17 | 2 | LOUNGE PENDANT | BASELITE | PENB/78-59INT-LBLC-BLC25WIN C MAX | PENDANT WITH CHALKBOARD BLACK EXTERIOR COPPER TONE INTERIOR BLACK CORD MED BASE | PENDANT | (1) AAMSCO LED-6W-ST64HYBRID-DIM | | 120 V/1-6 VA | |
| W1 | 2 | | ConTech Lighting | CTL18 H/LA-18P | Stealth LED Wall Lighter Track Fixture | | LED | | Power Connector 120 V/1-14 VA | MOUNT IN MIDDLE OF CEILING TILE. AIM FIXTURE TO CENTER ON GRAPHIC WALL AT BOOTH |
| X1B | 3 | FOH/BOH | LIGHTALARMS | GRANNRB | LED UNIVERSAL MNTG THERMOPLASTIC EXIT, RED LETTERS, BLACK HSNB | UNIVERSAL | -LED | EM | 120 V/1-3 VA | |

- 1 UTILIZE TIME-CLOCK CONTROLS FOR DINING ROOM CIRCUITS. REFER TO DRAWINGS E6.0 AND E6.1.
- 2 FOR LIGHTING FIXTURES, CONDUIT, CONDUCTORS AND INSTALLATION RESPONSIBILITIES, REFER TO SCOPE OF WORK.
- 3 FIXTURE AND SWITCH FACTORY INSTALLED WITH UNIT. G.C. TO COMPLETE CIRCUITING.
- 4 EXHAUST HOOD LIGHT FIXTURES SUPPLIED WITH HOOD AND MTD IN PRE-WIRED J-BOX. COMPLETE CIRCUITING PER SHEETS E6.0-E6.3.
- 5 COORD. J-BOX LOCATION WITH WOOD FRAMING SO IT REMAINS CONCEALED BEHIND FIXTURE. VERIFY MOUNTING HEIGHT WITH ARCH. DWGS.
- 6 OUTLET FOR MENU BOARD: SEE SHEET E3.0. VERIFY POINT OF CONNECTION. 10 LIGHT PANELS WIRED IN SERIES. G.C. TO MAKE FINAL CONNECTION.
- 7 J-BOX FOR EVERBRITE LIGHTING SYSTEM IN CANOPY. PROVIDE DISCONNECTING MEANS FOR LIGHTING. COORDINATE WITH CANOPY MANUFACTURER FOR CONNECTION TO SOLAR PANEL CONTROLLER ON ROOF AND ANY ADDITIONAL DETAILS.
- 8 J-BOX FOR LIGHT TROUGH AGAINST WINDOW. VERIFY POINT OF CONNECTION. WIRE VIA EXTERIOR LIGHTING CONTACTOR.
- 9 REFER TO ARCHITECTURAL EXTERIOR ELEVATIONS FOR DIMENSIONED LOCATION OF FIXTURE.
- 10 SEAL ALL ELECTRICAL CONDUITS INTO THE WALK-IN COOLER.
- 11 ALERT LIGHT - ONLY APPLIES WHEN A GEN IV POWER SOAK IS USED. DISREGARD IF GEN III POWER SOAK IS USED. SEE SHEET E3.0 FOR POWER REQUIREMENTS.
- 12 PROVIDE LIGHT SWITCHES FOR CONTROL OF LIGHT FIXTURES AS SHOWN. COORDINATE WITH LIGHTING MANUFACTURER FOR TYPE OF SWITCH.
- 13 MOUNT 'E2' AT 8'-0" A.F.G. TO CENTER OF FIXTURE. REFER TO ARCHITECTURAL ELEVATIONS.
- 14 SUBSCRIPT 'x' CORRESPONDS TO LIGHTING CONTROL SWITCH.
- 15 J-BOX FOR SECURITY (U-052) AND INTERIOR MENU BOARD (L-XX1) RESPECTIVELY.
- 16 MOUNT 'E2' AT 8'-6" A.F.G. TO CENTER OF FIXTURE. REFER TO ARCHITECTURAL ELEVATIONS.
- 17 COORDINATE LOCATION OF J-BOX AND CONNECTION TO SOLAR PANEL CONTROL PANEL LOCATED ON ROOF WITH SIGN VENDOR. PROVIDE DISCONNECTING MEANS AS REQUIRED. SEE SCOPE OF WORK.
- 18 COORDINATE LOCATION OF J-BOX WITH TOWER VENDOR. SEE SCOPE OF WORK.
- 19 PROVIDE J-BOX TO END OF UNISTRUT FOR ROUTING OF LIGHTING CABLES TO PENDANT LIGHTING FIXTURES. SEE DETAIL C ON E4.0 FOR ADDITIONAL INFORMATION.
- 20 PENDANT FIXTURES TO BE MOUNTED FROM HUB TABLE CROSS BAR BY ELECTRICAL CONTRACTOR. COORDINATE PRE-DRILLED HOLES AND WIRING WITH FURNITURE VENDOR. FIXTURES TO BE HUNG AT STAGGERED LENGTHS DOWN FROM THE CROSS BAR. COORDINATE LENGTH WITH TACO BELL PROJECT MANAGER.
- 21 CIRCUIT RESTROOM LIGHTS AND OCCUPANCY SENSOR SWITCH AHEAD OF LIGHTING CONTROL BOX.

KEY NOTES - ELECTRICAL LIGHTING PLAN AND SCHEDULE NTS

| NO. | DATE | DESCRIPTION |
|-----|----------|-------------------|
| A | 06.06.18 | CLIENT REVISIONS |
| | 04.06.18 | ISSUED FOR PERMIT |
| | 07.25.18 | ISSUED FOR BID |

CONTRACT DATE: 01.08.18
 BUILDING TYPE: T40M-O
 PLAN VERSION: FEB 2018
 BRAND DESIGNER: GPD GROUP
 SITE NUMBER: 312032
 STORE NUMBER: 2018088.03

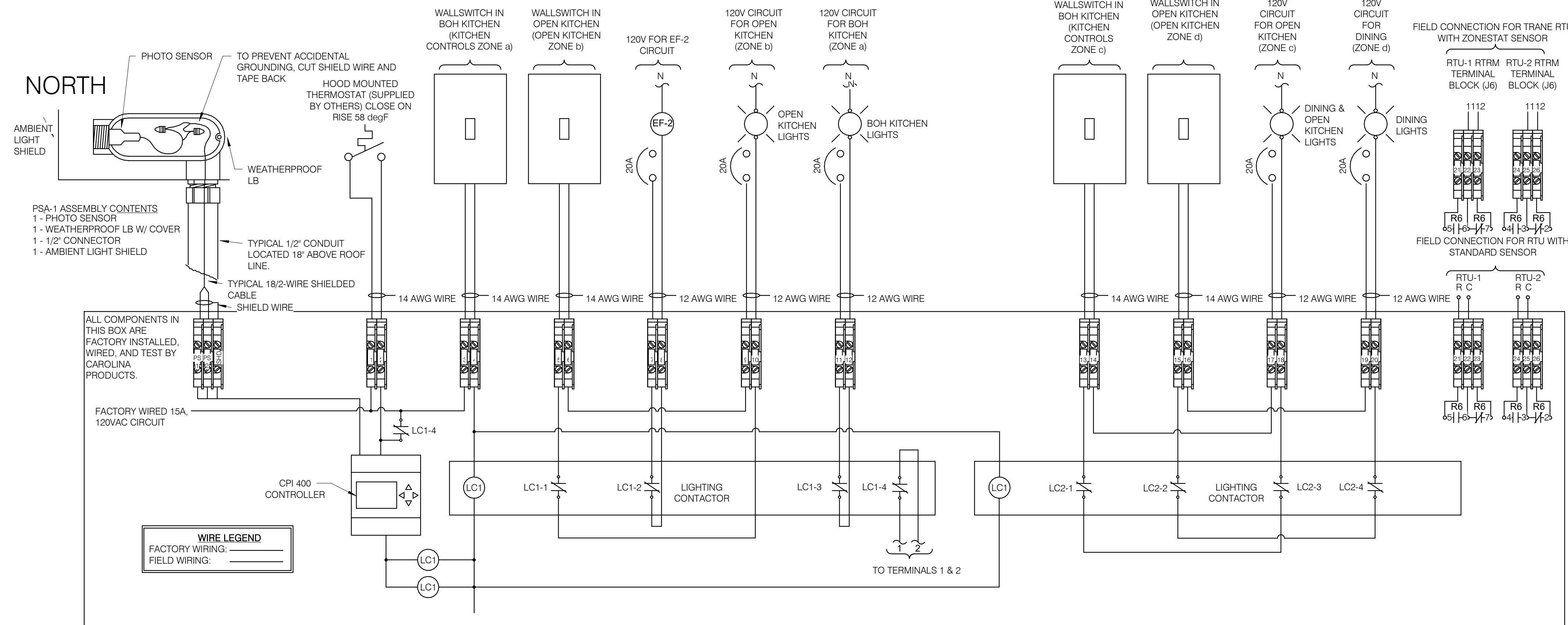
TACO BELL
 5070 W ATLANTIC BLVD.
 DELRAY BCH, FL 33484

TACO BELL
 T40
 OPEN KITCHEN
 CALIFORNIA SOL

LIGHTING PLAN AND DETAILS

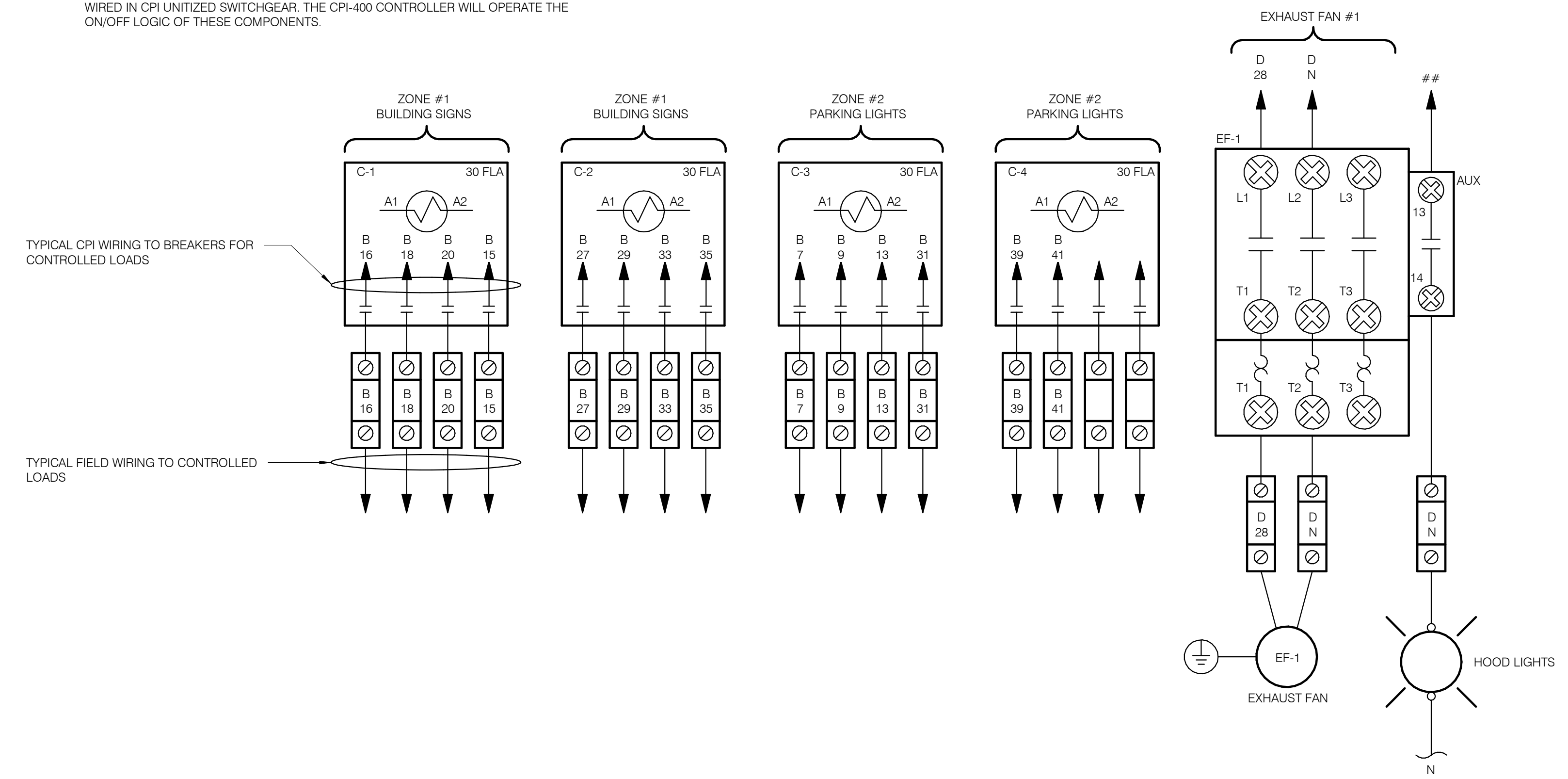
E4.0

PLOT DATE: 7/25/2018 3:12:16 PM



CPI SWITCHGEAR INTEGRATED CONTROL 6" = 1'-0" **1**

IMPORTANT NOTE:
 ALL LIGHTING CONTACTORS AND EXHAUST FAN (EF-1) ARE FACTORY INSTALLED AND WIRED IN CPI UNITIZED SWITCHGEAR. THE CPI-400 CONTROLLER WILL OPERATE THE ON/OFF LOGIC OF THESE COMPONENTS.



LIGHTING CONTACTORS AND EF-1 STARTER WIRING DETAIL N.T.S. **4**

| | |
|----------|-------------------|
| 04.06.18 | ISSUED FOR PERMIT |
| 07.25.18 | ISSUED FOR BID |
| | |
| | |
| | |
| | |
| | |
| | |
| | |
| | |

CONTRACT DATE: 01.08.18
 BUILDING TYPE: T40M-O
 PLAN VERSION: FEB 2018
 BRAND DESIGNER: GPD GROUP
 SITE NUMBER: 312032
 STORE NUMBER: 2018088.03

TACO BELL
 5070 W ATLANTIC BLVD.
 DELRAY BCH, FL 33484

TACO BELL
 T40
 OPEN KITCHEN
 CALIFORNIA SOL

**ELECTRICAL
 DETAILS - TBCCB**
 (FOR REFERENCE ONLY)

E6.1

PLOT DATE: 7/25/2018 3:12:26 PM

