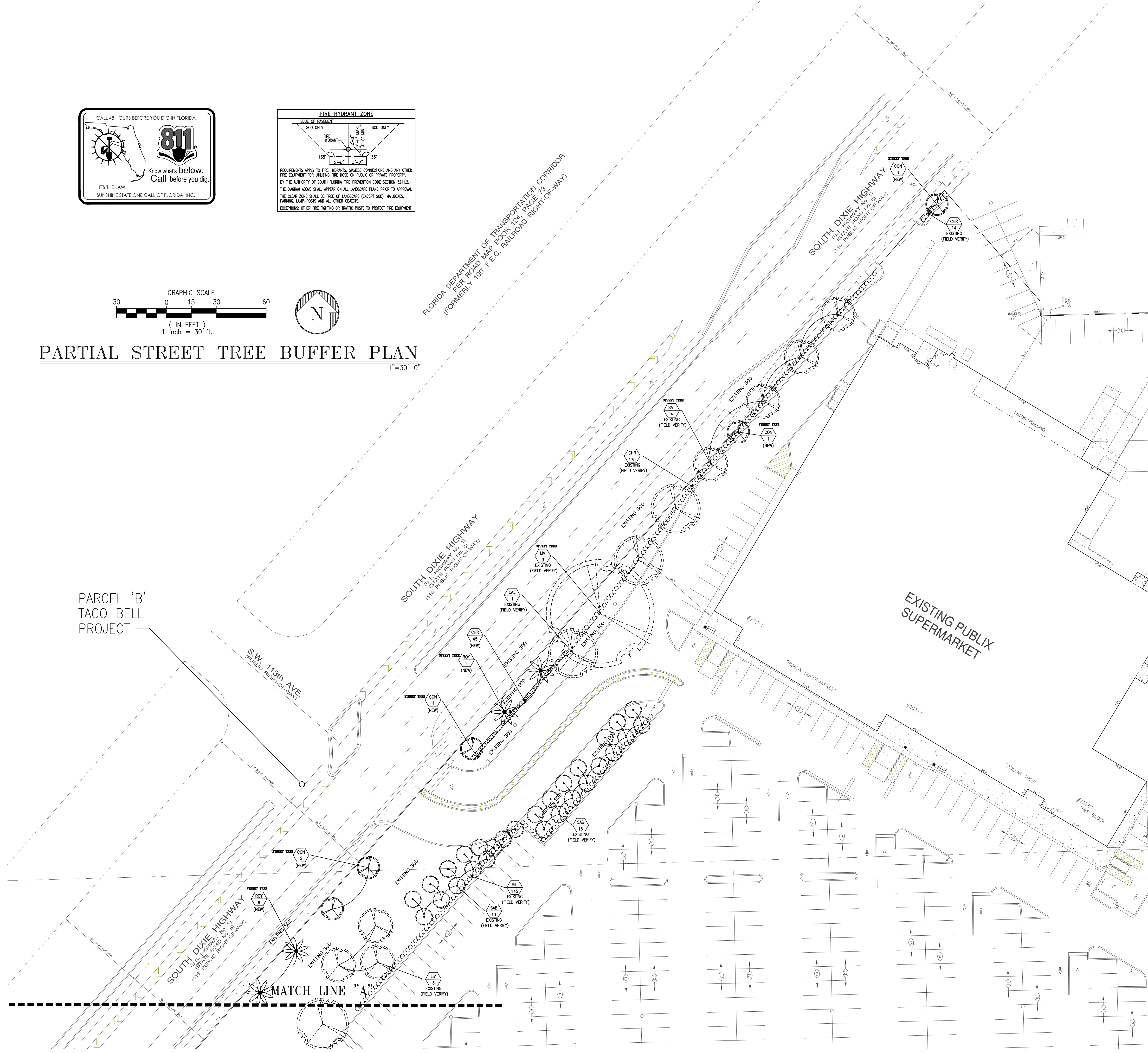


PARTIAL STREET TREE BUFFER PLAN

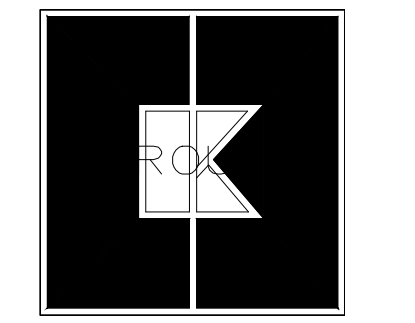
1"=30'-0"

FLORIDA DEPARTMENT OF TRANSPORTATION CORRIDOR (FORMERLY 100' F.E.C. RAILROAD RIGHT-OF-WAY)



PARCEL 'B' TACO BELL PROJECT

MATCH LINE "A"



CKE GROUP
INCORPORATED
engineering • architecture • planning

15500 NEW BARN ROAD
SUITE 106
MIAMI LAKES, FLORIDA 33014
PHONE: (305) 558-4124
FAX: (305) 826-0619
EB#0004432

SEAL
EDUARDO L. CARCACHE
CIVIL ENGINEER-PE 31914
ANA A. GONZALEZ VALDEZ
ARCHITECT-AR 97769

RICHARD BARTLETT LANDSCAPE, INC.
14417 STIRRUP LANE
WELLINGTON, FL 33414
TEL (561) 795-2445
LANDSCAPE ARCHITECTURE LC26000352
MICHAEL E. RAWLS SLA#0001633
EMAIL - rbarlett@rbls.com

© COPYRIGHT
THE FOLLOWING DRAWINGS ARE INSTRUMENTS OF SERVICES TO
THE LANDSCAPE ARCHITECTS. THEY ARE NOT PRODUCTS OF
DESIGN. ALL IDEAS, DESIGN, ARRANGEMENTS, AND PLANS
INDICATED OR REPRESENTED BY THIS DRAWING ARE OWNED BY
AND ARE THE PROPERTY OF RICK BARTLETT LANDSCAPE ARCHITECTS
AND WERE CREATED, DEVELOPED AND DEVELOPED FOR USE ON
AND IN CONNECTION WITH THE SPECIFIC PROJECT OR SITE
NONE OF SUCH IDEAS, DESIGN, ARRANGEMENTS, OR PLANS
AND SPECIFICATIONS BY OR DISCLOSED TO ANY PERSON, FIRM,
OR CORPORATION FOR ANY PURPOSE WHATSOEVER WITHOUT
THE WRITTEN PERMISSION OF THE DESIGNER.

SEAL

RBL#18-04-2101
DRAWN BY: RICK BARTLETT
06/25/2018
CHECKED BY: RGB/MER

NO.	DATE	DESCRIPTION
1	05-31-18	
2	06-25-18	

CONTRACT DATE: _____
BUILDING TYPE: EXP. LT. MED-40
PLAN VERSION: x
SITE NUMBER: 309797
STORE NUMBER: 420630

TACO BELL
20711 SO. DIXIE HWY
CUTLER BAY, FL



Explorer Lite

STREET TREE BUFFER

L-300

PLOT DATE: 07-06-2018