

TACO BELL - SOUTHGATE, MI

SHEET INDEX

- F1 TITLE PAGE**
- F2 FLOOR PLAN**
- F2a SEATING & DECOR SCHEDULE**
- F3 GENERAL CONTRACTOR PLAN**
- F4 FURNITURE PLACEMENT PLAN**
- F5 PRODUCT DETAILS**
- F5a PRODUCT DETAILS CONT.**
- F5b PRODUCT DETAILS CONT.**
- F5c PRODUCT DETAILS CONT.**
- F5d PRODUCT DETAILS CONT.**
- F5e PRODUCT DETAILS CONT.**
- F5f PRODUCT DETAILS CONT.**
- F5g PRODUCT DETAILS CONT.**
- F6 TYPICAL ELEVATION 1**
- F7 SPECIFICATIONS**
- F8 INSTALLATION DETAILS**
- F9 DIMENSION VERIFICATION PLAN**

DRAWING PHASE

- PRELIMINARY DRAWINGS**
NOT FOR CONSTRUCTION - FOR APPROVAL OF DESIGN ONLY
- FINAL DRAWINGS**
FOR CONSTRUCTION - DO NOT SCALE OFF PLANS

PROJECT REVISIONS

REV. NO	REVISION	REV. BY	DATE
	PROJECT LAUNCH		
	PRELIMINARY DRAWING SET ISSUED	RP	07.11.18
1	FDD DRAWING SET ISSUED POS, HANDOFF, O.K.W. LENGTHS REV.	RP	10.18.18
	--	--	00.00.00
	--	--	00.00.00
	--	--	00.00.00

DRAWING APPROVAL

- DRAWINGS APPROVED AS DRAWN**

FRANCHISEE SIGNATURE

GENERAL NOTES

GENERAL CONSTRUCTION

ALL WORK, CONSTRUCTION, AND MATERIALS SHALL COMPLY WITH ALL PROVISIONS OF THE INTERNATIONAL BUILDING CODE AND WITH OTHER RULES, REGULATIONS, AND ORDINANCES GOVERNING THE PLACE OF CONSTRUCTION.

IT IS THE RESPONSIBILITY OF ALL PARTIES SUPPLYING LABOR OR MATERIAL OR BOTH, TO BRING TO THE ATTENTION OF THE PROJECT MANAGER AND THE OWNER ANY DISCREPANCIES OR CONFLICT BETWEEN THE CODE REQUIREMENTS AND THESE PLANS.

THE APPLICABLE CODES SHALL INCLUDE, BUT SHALL NOT BE LIMITED TO THE INTERNATIONAL BUILDING CODE, UNIFORM PLUMBING CODE, UNIFORM MECHANICAL CODE, AMERICANS WITH DISABILITIES ACT, ICC/ANSI A117.1, AND NATIONAL FIRE PROTECTION ASSOCIATION CODES.

GENERAL CONTRACTOR SHALL BE RESPONSIBLE FOR PROVIDING ALL WORK AND MATERIALS IN ACCORDANCE WITH ALL LOCAL AND / OR CITY BUILDING CODES.

GENERAL CONTRACTOR SHALL BE RESPONSIBLE FOR ADHERING TO ALL AMERICANS WITH DISABILITIES ACT GUIDELINES.

GENERAL CONTRACTOR SHALL BE RESPONSIBLE FOR OBTAINING ALL REQUIRED BUILDING PERMITS.

GENERAL CONTRACTOR SHALL BE RESPONSIBLE FOR COPYING AND DISTRIBUTING IIX PLANS AND DOCUMENTS TO ALL SUBCONTRACTORS INVOLVED.

NEW AND REMODEL PROJECTS

WRITTEN DIMENSIONS HAVE PRECEDENCE OVER SCALE IN ALL CASES. DO NOT SCALE OFF PLANS.

THESE PLANS ARE THE PROPERTY OF IIX CORPORATION. THESE PLANS MAY NOT BE REPRODUCED OR USED IN ANY WAY, IN PART OR IN WHOLE, WITHOUT THE EXPRESS CONSENT OF IIX CORPORATION. UNAUTHORIZED USE WILL RESULT IN PAYMENT DUE FOR SERVICES RENDERED.

IIX REQUESTS CONFIRMATION OF FIELD DIMENSIONS FROM THE GENERAL CONTRACTOR FOR THE FABRICATION OF FURNITURE, DECOR, CORE DRILL, AND FLOOR PLANS.

IF SPECIFIED ITEMS ARE NOT AVAILABLE, CONTACT YOUR IIX PROJECT MANAGER LISTED IN PROJECT CONTACTS ON THIS DOCUMENT TITLE BLOCK.

THE GENERAL CONTRACTOR SHALL VERIFY ALL DIMENSIONS AND CONDITIONS AT THE JOB SITE AND NOTIFY IIX CORPORATION OF ALL DISCREPANCIES PRIOR TO STARTING WORK.

GENERAL CONTRACTOR IS TO PROVIDE A MINIMUM OF 45 LBS OF FLOOR TILE GROUT TO FINISH THE CORE DRILLED HOLES. IF SITE IS TO BE CORE DRILLED, PLEASE REFERENCE PLAN SET.

SPECIFIED WALLCOVERINGS AND CHAIR RAIL MUST RETURN INTO WINDOW.

GENERAL CONTRACTOR WILL BE RESPONSIBLE FOR DISPOSAL OF ALL PACKAGING MATERIAL FROM FURNITURE AND DECOR PRODUCTS.

VESTIBULE FINISHES ARE TO BE THE SAME AS THE MAIN DINING ROOM, UNLESS STATED OTHERWISE BY THE OWNER OR NOTED DIFFERENTLY ON IIX CORPORATE PLAN SET.

G.C. TO POSITION THERMOSTAT / VOLUME CONTROL / AND OTHER LIKE ITEMS TO NOT INTERFERE WITH THE DECOR PROVIDED BY IIX CORPORATION.

G.C. TO PROVIDE VERIFIED FIELD DIMENSIONS AS REQUESTED BY IIX CORPORATION.

IIX IS NOT RESPONSIBLE FOR ANCHORS TO BOLT DOWN TACO BELL HUB TABLE. GC MUST SOURCE AND INSTALL APPROPRIATE ANCHORS FOR SITE CONDITIONS.

GC IS RESPONSIBLE FOR PROVIDING SUBSTRATE AND ANY ADDITIONAL MATERIALS FOR THE INSTALLATION OF MARMOLEUM WAINSCOT WHEN WAINSCOT IS PROVIDED BY IIX CORPORATION.

IN CASES OF REMODELING; IT IS THE RESPONSIBILITY OF THE GENERAL CONTRACTOR/OWNER TO REMOVE ALL EXISTING SEATING, STEEL, DECOR, AND WALL FINISHES IN ACCORDANCE WITH THE DESIGN DRAWINGS PROVIDED BY IIX CORPORATION.

IN CASES OF REMODELING; FLOOR/ BASE TILE MUST BE IN GOOD REPAIR BEFORE ANY CORE DRILLING BEGINS.

IN CASES OF REMODELING; ALL DIMENSIONS ARE FROM EXISTING FINISHES. PLEASE MAKE APPROPRIATE ALLOWANCES FOR ANY NEW FINISHES.

IN CASES OF REMODELING; PLEASE CONTACT THE IIX PROJECT MANAGER CONCERNING ANY CONFLICTS BETWEEN IIX CORPORATION DECOR AND EXISTING/NEW ELECTRICAL OR HVAC PLACEMENT.

FLOORING REQUIREMENTS

A MINIMUM 5" CONCRETE SLAB IS REQUIRED FOR ALL CORE DRILLING, IIX CORPORATION IS NOT LIABLE FOR CORED STEEL THAT BECOMES UNSTABLE DUE TO DRILLING THROUGH A CONCRETE SLAB THAT IS LESS THAN 5" THICK.

ALL FLOOR AND COVE BASE TILE IS TO BE PROVIDED AND INSTALLED BY THE GENERAL CONTRACTOR.

NEW FLOOR AND BASE TILE TO BE INSTALLED AND GROUTED 48 HOURS PRIOR TO IIX CORPORATION PRODUCT INSTALLATION. REPAIRS WILL BE THE RESPONSIBILITY OF THE GENERAL CONTRACTOR IF DAMAGE OCCURS DUE TO INSUFFICIENT CURING TIME.

IIX CORPORATION IS NOT RESPONSIBLE FOR DAMAGE OF ANY MECHANICAL ELEMENTS LOCATED WITHIN 5' OF THE FINISHED FLOOR.



GLOBAL HEADQUARTERS
One Rider Trail Plaza, Suite 400
Earth City, MO 63045
T 314.739.4120
www.idxcorporation.com

CONFIDENTIAL:
This drawing and the information herein are the exclusive property of IIX Corporation. Any reproduction of use without express written consent is strictly forbidden.
C.A TITLE 17:
All composite wood products (MDF, PB, HWPW) are compliant. Place compliance label as shown within drawing (or per current standard) and do not remove after installation.
DIMENSIONS:
All dimensions are in inches unless noted otherwise - views are not to scale unless noted. Written dimensions take precedence over scale in all instances. Do not scale off drawings. Contact IIX Corporation for confirmation of any questionable dimensions.

PROJECT MANAGER
Dennis Caruana
T 909.212.8375

ACCOUNT EXECUTIVE
Gordon Bjorkman
T 413.207.4098

idX CUSTOMER SERVICE
Jonathan Dunn
T 909.635.3541

PLEASE CONTACT THE PARTIES LISTED ABOVE FOR ASSISTANCE WITH ANY CONCERNS OR QUESTIONS.

PROJECT CONTACTS

The General Contractor (GC) shall verify all dimensions and conditions at the job site and notify IIX Corporation of any/all discrepancies prior to starting work.

The GC is to review IIX Corporation plans against the architectural drawing set being used on site. The GC shall notify IIX Corporation immediately if there are discrepancies.

The GC is to install table bases on accessible table tops per ADAAG guidelines or per local code, whichever is most stringent.

GC/INSTALL NOTES



TACO BELL

PROJECT:
TACO BELL TRANSFORMATION
MODERN EXPLORER

LOCATION:
19000 NORTHLINE ROAD
SOUTHGATE, MI 48195

SET ISSUED DATE:
10/18/18

DRAWN BY:
RP

PROJECT INFORMATION

DRAWING TITLE:
TITLE PAGE

DRAWING SCALE:
NOT TO SCALE

PROJECT ID:
33808

SHEET:
F1 OF F8



GLOBAL HEADQUARTERS - 1 RIDER TRAIL PLAZA, SUITE 400, EARTH CITY, MO 63045



GLOBAL HEADQUARTERS
One Rider Trail Plaza, Suite 400
Earth City, MO 63045
T 314.739.4120
www.idxcorporation.com

CONFIDENTIAL:
This drawing and the information herein are the exclusive property of idx Corporation. Any reproduction of use without express written consent is strictly forbidden.
CA TITLE 17:
All composite wood products (MDF, PB, HWPW) are compliant. Place compliance label as shown within drawing (or per current standard) and do not remove after installation.
DIMENSIONS:
All dimensions are in inches unless noted otherwise - views are not to scale unless noted. Written dimensions take precedence over scale in all instances. Do not scale off drawings. Contact idx Corporation for confirmation of any questionable dimensions.

PROJECT MANAGER
Dennis Caruana
T 909.212.8375

ACCOUNT EXECUTIVE
Gordon Bjorkman
T 413.207.4098

idx CUSTOMER SERVICE
Jonathan Dunn
T 909.635.3541

PLEASE CONTACT THE PARTIES LISTED ABOVE FOR ASSISTANCE WITH ANY CONCERNS OR QUESTIONS.

PROJECT CONTACTS

The General Contractor (GC) shall verify all dimensions and conditions at the job site and notify idx Corporation of any/all discrepancies prior to starting work.

The GC is to review idx Corporation plans against the architectural drawing set being used on site. The GC shall notify idx Corporation immediately if there are discrepancies.

The GC is to install table bases on accessible table tops per ADAAG guidelines or per local code, whichever is most stringent.

GC/INSTALL NOTES



TACO BELL

PROJECT:
TACO BELL TRANSFORMATION
MODERN EXPLORER

ADDRESS:
19000 NORTHLINE ROAD
SOUTHGATE, MI 48195

SET ISSUED DATE:
10/18/18

DRAWN BY:
RP

PROJECT INFORMATION

DRAWING TITLE:
FLOOR PLAN

DRAWING SCALE:
1/4" = 1'-0"

PROJECT ID:
33808

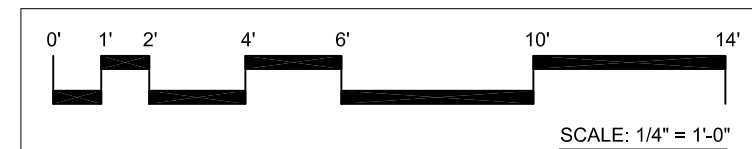
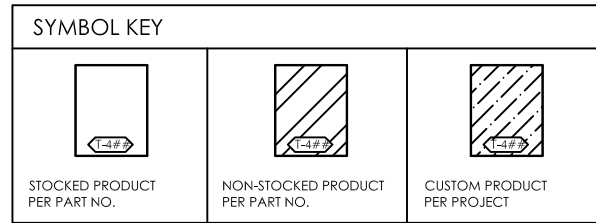
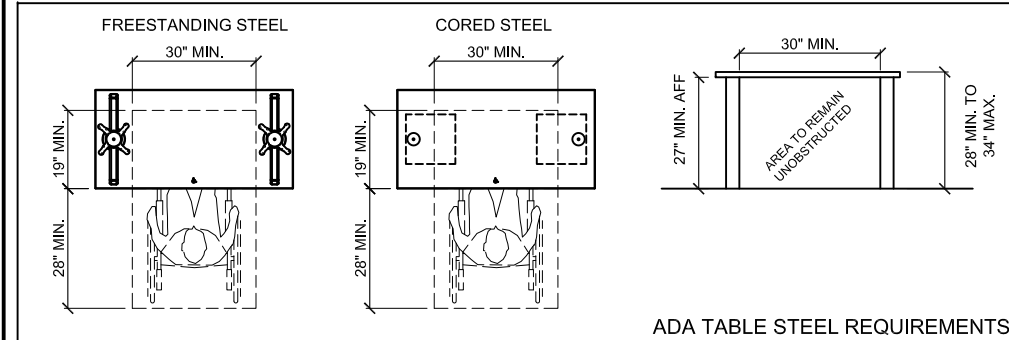
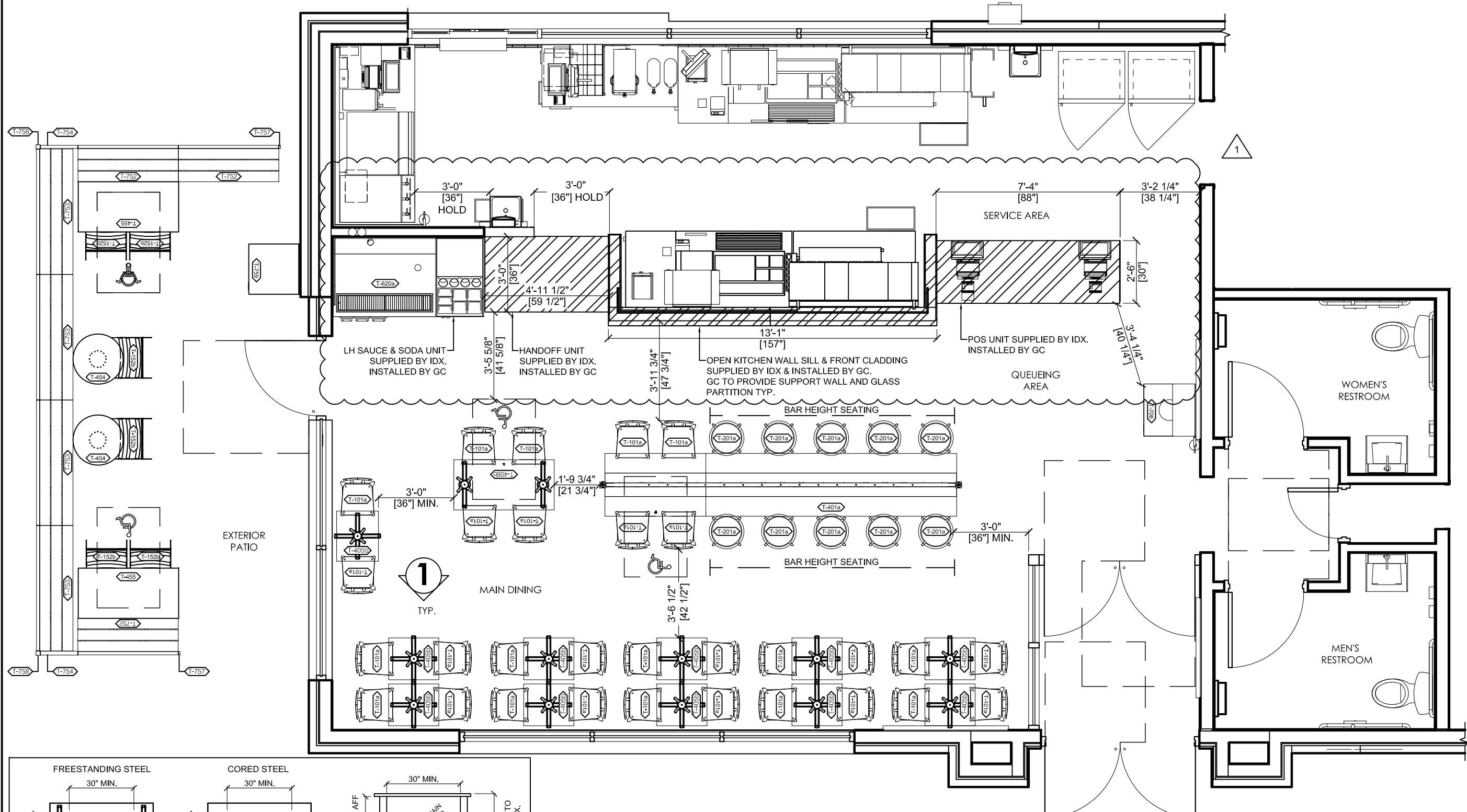
SHEET:
F2 OF F8

INTERIOR DINING

SEATING CAPACITY	40	REQUIRED ADA TABLES: 2					
SEAT TO TABLE RATIO	2.6	1	2	3	4	6	10
TABLE TOP BREAKDOWN	14	0	11	0	2	0	1

PATIO DINING

SEATING CAPACITY	12	REQUIRED ADA TABLES: 1					
SEAT TO TABLE RATIO	3	1	2	3	4	5	6
TABLE TOP BREAKDOWN	4	0	2	0	2	0	0





GLOBAL HEADQUARTERS
One Rider Trail Plaza, Suite 400
Earth City, MO 63045
T 314.739.4120
www.idxcorporation.com

CONFIDENTIAL:
This drawing and the information herein are the exclusive property of idx Corporation. Any reproduction of use without express written consent is strictly forbidden.
CA TITLE 17:
All composite wood products (MDF, PB, HWPW) are compliant. Place compliance label as shown within drawing (or per current standard) and do not remove after installation.
DIMENSIONS:
All dimensions are in inches unless noted otherwise - views are not to scale unless noted. Written dimensions take precedence over scale in all instances. Do not scale off drawings. Contact idx Corporation for confirmation of any questionable dimensions.

PROJECT MANAGER
Dennis Caruana
T 909.212.8375

ACCOUNT EXECUTIVE
Gordon Bjorkman
T 413.207.4098

idx CUSTOMER SERVICE
Jonathan Dunn
T 909.635.3541

PLEASE CONTACT THE PARTIES LISTED ABOVE FOR ASSISTANCE WITH ANY CONCERNS OR QUESTIONS.

PROJECT CONTACTS

The General Contractor (GC) shall verify all dimensions and conditions at the job site and notify idx Corporation of any/all discrepancies prior to starting work.

The GC is to review idx Corporation plans against the architectural drawing set being used on site. The GC shall notify idx Corporation immediately if there are discrepancies.

The GC is to install table bases on accessible table tops per ADAAG guidelines or per local code, whichever is most stringent.

GC/INSTALL NOTES



TACO BELL

PROJECT:
TACO BELL TRANSFORMATION
MODERN EXPLORER

ADDRESS:
19000 NORTHLINE ROAD
SOUTHGATE, MI 48195

SET ISSUED DATE:
10/18/18

DRAWN BY:
RP

PROJECT INFORMATION

DRAWING TITLE:
SEATING & DECOR SCHEDULE

DRAWING SCALE:
NOT TO SCALE

PROJECT ID:
33808

SHEET:
F2a OF F8

SEATING & DECOR SCHEDULE

QTY	DESCRIPTION	SKU
30	Retro Industrial Chair, Weathered Grey Seat, Black Frame, TB Transformational, TYAB3014.C	T-101a
10	Barrel Barstool, Weathered Grey Seat, Black Frame, TB Transformational, TYAB4001.C	T-201a
1	Hub Table with Stencil, ADA, Reclaimed Wood/White, TB Transformational, TYAB0208	T-401a
11	Table, Wood Veneer Ply, 24" x 20", Medium Brown, TB Transformational, #TYAB0225	T-405b
1	Table, Wood Veneer Ply, 24" x 48" ADA, Medium Brown, TB Transformational, #TYA10119	T-408b
1	Waste Enclosure, Metal Frame w/Solid Surface-Single w/ liner, TB Transf., #TYA10128.C	T-706
3	48" Fench, Unfinished Western Cedar, TB Transf., #TYAB0132.C	T-752
4	60" Fench, Unfinished Western Cedar, TB Transf., #TYAB0131	T-753
2	16" Railing, Black Wrinkle Powdercoat Steel, TB Transf., #TYAB0136.C	T-754
2	End Post, Black Wrinkle Powdercoat Steel, TB Transf., #TYAB0143.C	T-757
2	Corner Post, Black Wrinkle Powdercoat Steel, TB Transf., #TYAB0144.C	T-758
1	Exterior Trash Unit, TB Transformational, #TYAB2189, Domestic	T-###
6	Ellipse Aluminum Outdoor Chair, TB Transformational, #TYAB4132, Domestic	T-152b
2	ADA Exterior Aluminum Table, 24" x 48", TB Transformational, #TYAB2134, Domestic	T-455
2	Aluminum Exterior Table, 24" Dia., TB Transformational, #TYAB2135, Domestic	T-454
12	Chair Rail with Route, Painted Maple - Worldly Gray, 1 1/2" H X 3/4" W X 12'-0" L, #TYAB2175	Z-###
1	Wainscot - Laminate, Pepperdust, J-Channel, H-Channel, Inside/Outside Corner, 1 lot, Domestic	Z-###
4	Window Sills, 1/2" H x 6.5" W x 12'-0" L, Solid Surface, Bright White, #TYP10792, Domestic	Z-###
1	All in One Sauce and Soda Station, LH, TB Transformational, #TYAB2185.C, Domestic	T-620a
1	Open Kitchen Wall Sill and Front Cladding, Fired Steel Laminate, TB Transformational, Domestic	T-###
1	POS Cup Dispenser w/ Metal Legs, TB Transformational, #TYAB4111, Domestic	T-###
1	POS Handoff Unit, Rustic Slate Laminate, White SS Top, TB Transformational, Domestic	T-###
1	POS Unit, Rustic Slate Laminate, White SS Top, TB Transformational, Domestic	T-###

SEATING AND DECOR

TACO BELL TRANSFORMATIONAL - MODERN EXPLORER



GLOBAL HEADQUARTERS
 One Rider Trail Plaza, Suite 400
 Earth City, MO 63045
 T 314.739.4120
 www.idxcorporation.com

CONFIDENTIAL:
 This drawing and the information herein are the exclusive property of idx Corporation. Any reproduction of use without express written consent is strictly forbidden.
 CA TITLE 17:
 All composite wood products (MDF, PB, HWPW) are compliant. Place compliance label as shown within drawing (or per current standard) and do not remove after installation.
 DIMENSIONS:
 All dimensions are in inches unless noted otherwise - views are not to scale unless noted. Written dimensions take precedence over scale in all instances. Do not scale off drawings. Contact idx Corporation for confirmation of any questionable dimensions.

PROJECT MANAGER
 Dennis Caruana
 T 909.212.8375

ACCOUNT EXECUTIVE
 Gordon Bjorkman
 T 413.207.4098

idx CUSTOMER SERVICE
 Jonathan Dunn
 T 909.635.3541

PLEASE CONTACT THE PARTIES LISTED ABOVE FOR ASSISTANCE WITH ANY CONCERNS OR QUESTIONS.

PROJECT CONTACTS

The General Contractor (GC) shall verify all dimensions and conditions at the job site and notify idx Corporation of any/all discrepancies prior to starting work.

The GC is to review idx Corporation plans against the architectural drawing set being used on site. The GC shall notify idx Corporation immediately if there are discrepancies.

The GC is to install table bases on accessible table tops per ADAAG guidelines or per local code, whichever is most stringent.

GC/INSTALL NOTES



TACO BELL

PROJECT:
 TACO BELL TRANSFORMATION
 MODERN EXPLORER

LOCATION:
 19000 NORTHLINE ROAD
 SOUTHGATE, MI 48195

SET ISSUED DATE:
 10/18/18

DRAWN BY:
 RP

PROJECT INFORMATION

DRAWING TITLE:
 GC PLAN

DRAWING SCALE:
 1/4" = 1'-0"

PROJECT ID:
 33808

SHEET:
 F3 OF F8

WALL FINISH KEY

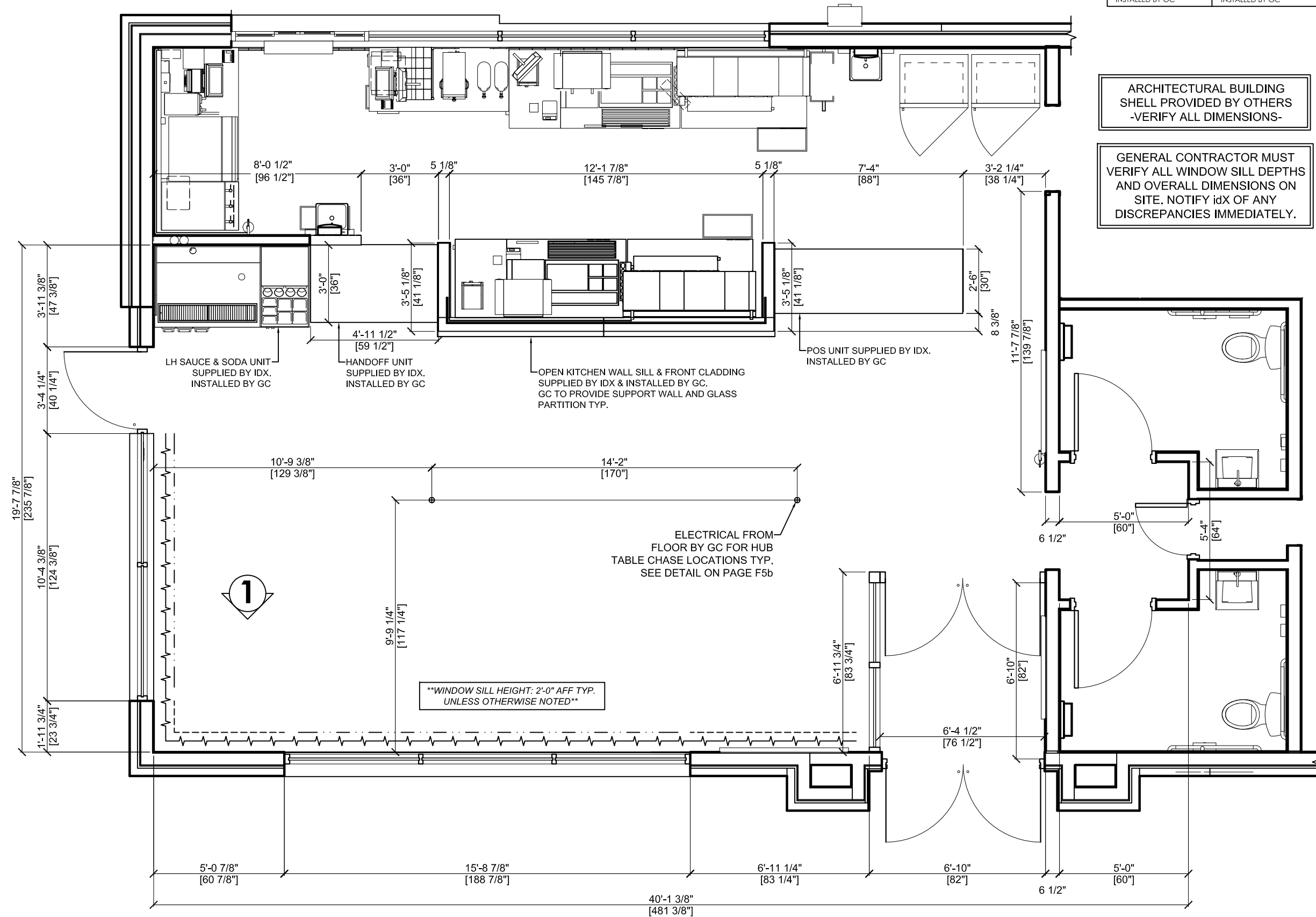
PL-2, WAINSCOT BY IDX, INSTALLED BY GC

P-1, PAINTED CHAIR RAIL BY IDX, INSTALLED BY GC

SOLID SURFACE WINDOW SILL BY IDX, INSTALLED BY GC

ARCHITECTURAL BUILDING SHELL PROVIDED BY OTHERS -VERIFY ALL DIMENSIONS-

GENERAL CONTRACTOR MUST VERIFY ALL WINDOW SILL DEPTHS AND OVERALL DIMENSIONS ON SITE. NOTIFY idx OF ANY DISCREPANCIES IMMEDIATELY.



1

****WINDOW SILL HEIGHT: 2'-0" AFF TYP. UNLESS OTHERWISE NOTED****

ELECTRICAL FROM FLOOR BY GC FOR HUB TABLE CHASE LOCATIONS TYP. SEE DETAIL ON PAGE F5b

LH SAUCE & SODA UNIT SUPPLIED BY IDX. INSTALLED BY GC

HANDOFF UNIT SUPPLIED BY IDX. INSTALLED BY GC

OPEN KITCHEN WALL SILL & FRONT CLADDING SUPPLIED BY IDX & INSTALLED BY GC. GC TO PROVIDE SUPPORT WALL AND GLASS PARTITION TYP.

POS UNIT SUPPLIED BY IDX. INSTALLED BY GC



GLOBAL HEADQUARTERS
 One Rider Trail Plaza, Suite 400
 Earth City, MO 63045
 T 314.739.4120
 www.idxcorporation.com

CONFIDENTIAL:
 This drawing and the information herein are the exclusive property of idx Corporation. Any reproduction of use without express written consent is strictly forbidden.
 CA TITLE 17:
 All composite wood products (MDF, PB, HWPW) are compliant. Place compliance label as shown within drawing (or per current standard) and do not remove after installation.
DIMENSIONS:
 All dimensions are in inches unless noted otherwise - views are not to scale unless noted. Written dimensions take precedence over scale in all instances. Do not scale off drawings. Contact idx Corporation for confirmation of any questionable dimensions.

PROJECT MANAGER
 Dennis Caruana
 T 909.212.8375

ACCOUNT EXECUTIVE
 Gordon Bjorkman
 T 413.207.4098

idx CUSTOMER SERVICE
 Jonathan Dunn
 T 909.635.3541

PLEASE CONTACT THE PARTIES LISTED ABOVE FOR ASSISTANCE WITH ANY CONCERNS OR QUESTIONS.

PROJECT CONTACTS

The General Contractor (GC) shall verify all dimensions and conditions at the job site and notify idx Corporation of any/all discrepancies prior to starting work.

The GC is to review idx Corporation plans against the architectural drawing set being used on site. The GC shall notify idx Corporation immediately if there are discrepancies.

The GC is to install table bases on accessible table tops per ADAAG guidelines or per local code, whichever is most stringent.

GC/INSTALL NOTES



TACO BELL

PROJECT:
 TACO BELL TRANSFORMATION
 MODERN EXPLORER

LOCATION:
 19000 NORTHLINE ROAD
 SOUTHGATE, MI 48195

SET ISSUED DATE:
 10/18/18

DRAWN BY:
 RP

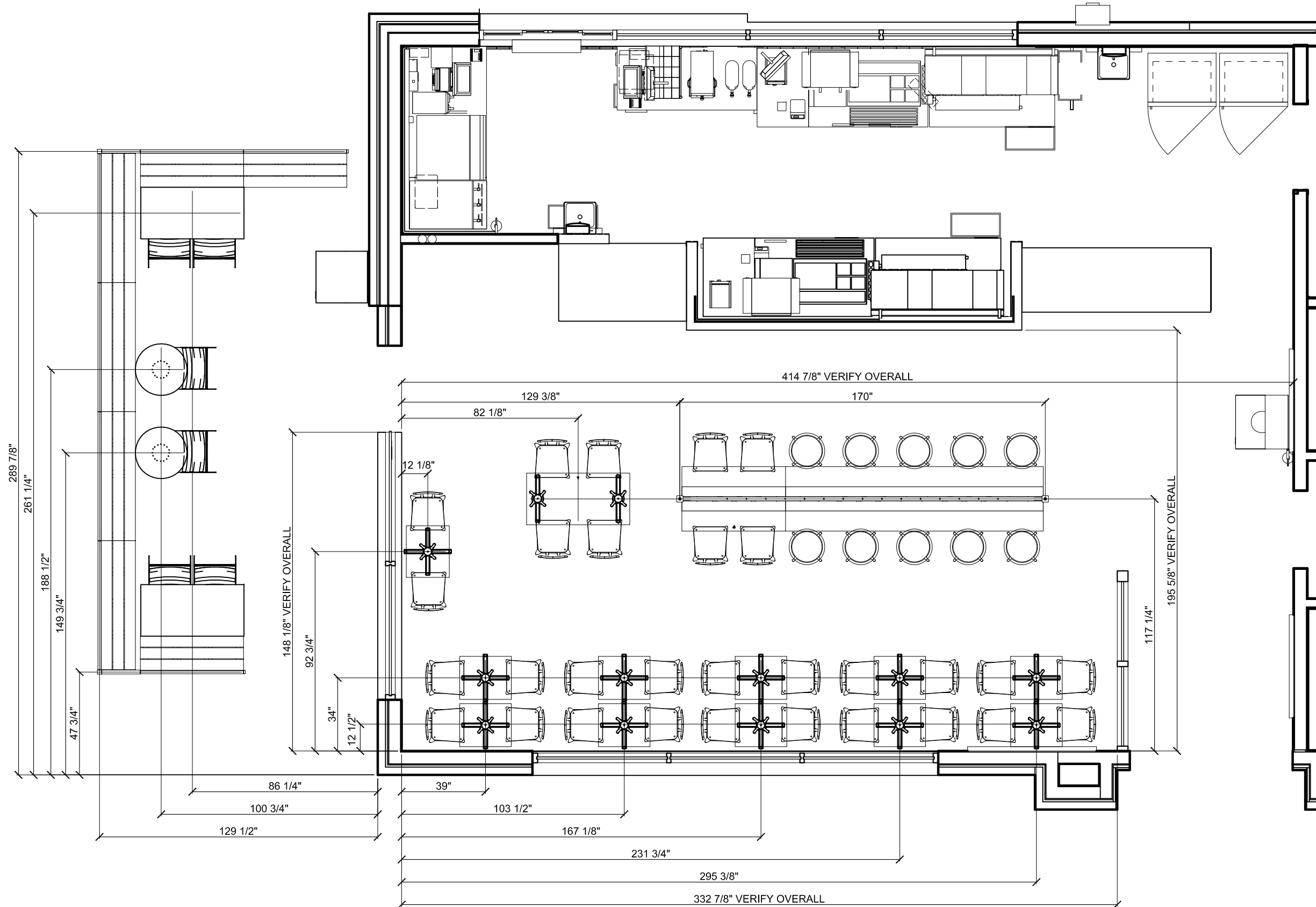
PROJECT INFORMATION

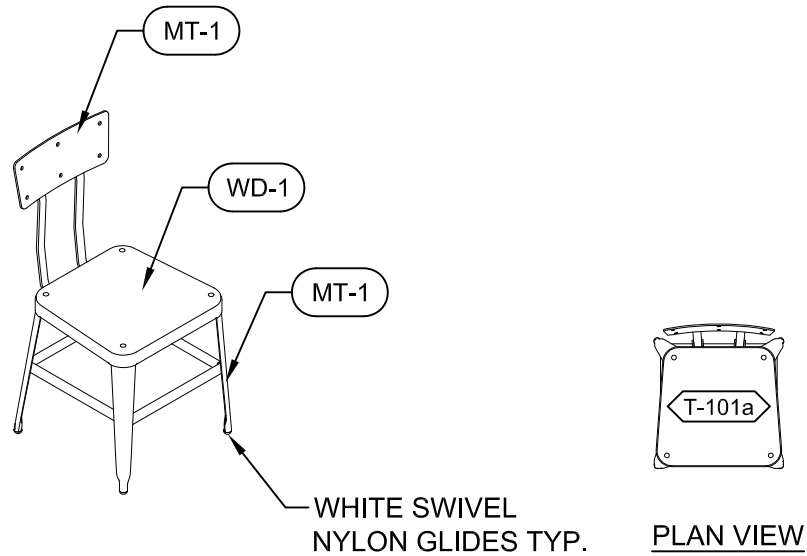
DRAWING TITLE:
 FURNITURE PLACEMENT PLAN

DRAWING SCALE:
 1/4" = 1'-0"

PROJECT ID:
 33808

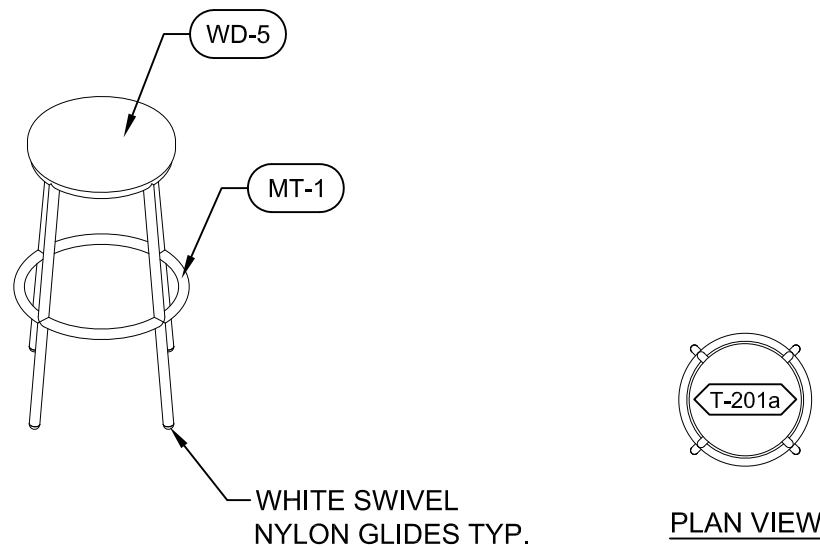
SHEET:
 F4 OF F8





WHITE SWIVEL
NYLON GLIDES TYP.

PLAN VIEW



WHITE SWIVEL
NYLON GLIDES TYP.

PLAN VIEW

Retro Industrial Chair, 18" TYAB3014.C

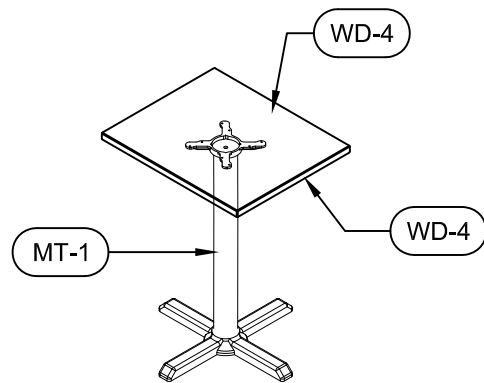
SCALE: NOT TO SCALE

T-101a

Barrel Stool, Bar Ht. TYAB4001.C

SCALE: NOT TO SCALE

T-201a

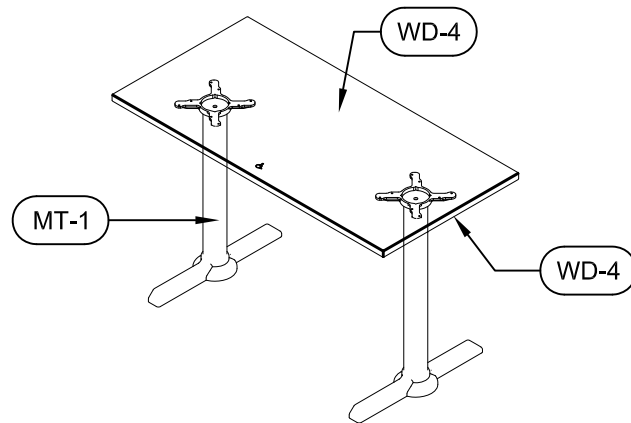


NOTES:
-TABLE + BASE REQUIRE FINAL
ASSEMBLY ON SITE BY INSTALLER

Tables, Brown TYAB0225

SCALE: NOT TO SCALE

T-405b

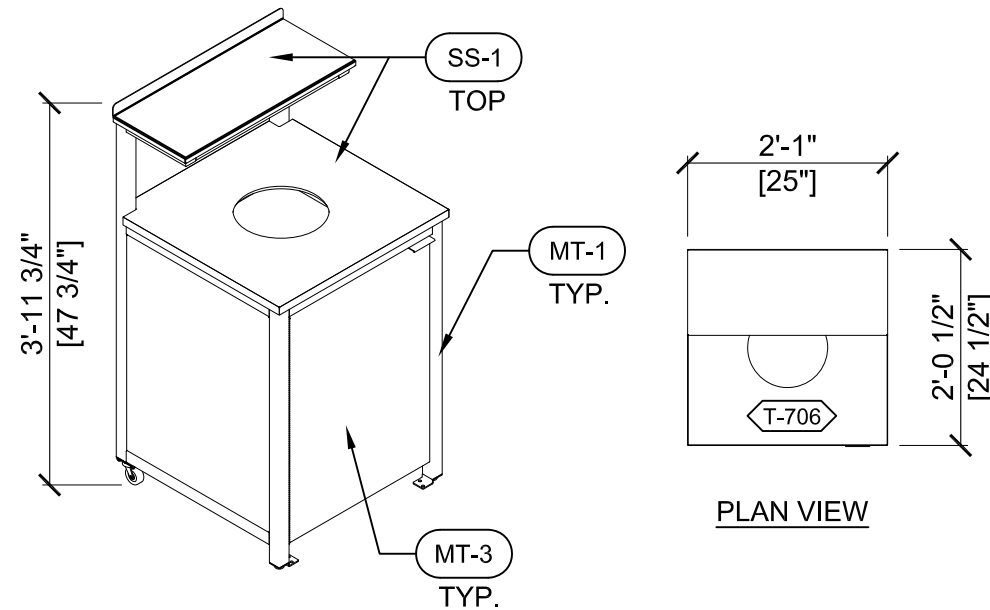


NOTES:
-BLACK ADA SYMBOL PROVIDED ON
SELECT TABLES - SEE PLAN
-TABLE + BASE REQUIRE FINAL
ASSEMBLY ON SITE BY INSTALLER

Tables, Brown TYA10119

SCALE: NOT TO SCALE

T-408b



NOTE: FRONT LEGS HAVE GLIDES, BACK LEGS HAVE 2" CASTERS

Waste Enclosure, Single TYA10128.C

SCALE: 1/2" = 1'-0"

T-706



GLOBAL HEADQUARTERS
One Rider Trail Plaza, Suite 400
Earth City, MO 63045
T 314.739.4120
www.idxcorporation.com

CONFIDENTIAL:
This drawing and the information herein are the exclusive property of idX Corporation. Any reproduction of use without express written consent is strictly forbidden.
CA TITLE 17:
All composite wood products (MDF, PB, HWPW) are compliant. Place compliance label as shown within drawing (or per current standard) and do not remove after installation.
DIMENSIONS:
All dimensions are in inches unless noted otherwise - views are not to scale unless noted. Written dimensions take precedence over scale in all instances. Do not scale off drawings. Contact idX Corporation for confirmation of any questionable dimensions.

PROJECT MANAGER
Dennis Caruana
T 909.212.8375

ACCOUNT EXECUTIVE
Gordon Bjorkman
T 413.207.4098

idX CUSTOMER SERVICE
Jonathan Dunn
T 909.635.3541

PLEASE CONTACT THE PARTIES LISTED
ABOVE FOR ASSISTANCE WITH ANY
CONCERNS OR QUESTIONS.

PROJECT CONTACTS

The General Contractor (GC) shall verify all dimensions and conditions at the job site and notify idX Corporation of any/all discrepancies prior to starting work.

The GC is to review idX Corporation plans against the architectural drawing set being used on site. The GC shall notify idX Corporation immediately if there are discrepancies.

The GC is to install table bases on accessible table tops per ADAAG guidelines or per local code, whichever is most stringent.

GC/INSTALL NOTES



TACO BELL

PROJECT:
TACO BELL TRANSFORMATION
MODERN EXPLORER

LOCATION:
19000 NORTHLINE ROAD
SOUTHGATE, MI 48195

SET ISSUED DATE:
10/18/18

DRAWN BY:
RP

PROJECT INFORMATION

DRAWING TITLE:
PRODUCT DETAILS

DRAWING SCALE:
1/2" = 1'-0"

PROJECT ID:
33808

SHEET:
F5 OF F8



GLOBAL HEADQUARTERS
One Rider Trail Plaza, Suite 400
Earth City, MO 63045
T 314.739.4120
www.idxcorporation.com

CONFIDENTIAL:
This drawing and the information herein are the exclusive property of idx Corporation. Any reproduction of use without express written consent is strictly forbidden.
CA TITLE 17:
All composite wood products (MDF, PB, HWPW) are compliant. Place compliance label as shown within drawing (or per current standard) and do not remove after installation.
DIMENSIONS:
All dimensions are in inches unless noted otherwise - views are not to scale unless noted. Written dimensions take precedence over scale in all instances. Do not scale off drawings. Contact idx Corporation for confirmation of any questionable dimensions.

PROJECT MANAGER
Dennis Caruana
T 909.212.8375

ACCOUNT EXECUTIVE
Gordon Bjorkman
T 413.207.4098

idx CUSTOMER SERVICE
Jonathan Dunn
T 909.635.3541

PLEASE CONTACT THE PARTIES LISTED ABOVE FOR ASSISTANCE WITH ANY CONCERNS OR QUESTIONS.

PROJECT CONTACTS

The General Contractor (GC) shall verify all dimensions and conditions at the job site and notify idx Corporation of any/all discrepancies prior to starting work.

The GC is to review idx Corporation plans against the architectural drawing set being used on site. The GC shall notify idx Corporation immediately if there are discrepancies.

The GC is to install table bases on accessible table tops per ADAAG guidelines or per local code, whichever is most stringent.

GC/INSTALL NOTES



TACO BELL

PROJECT:
TACO BELL TRANSFORMATION
MODERN EXPLORER

LOCATION:
19000 NORTHLINE ROAD
SOUTHGATE, MI 48195

SET ISSUED DATE:
10/18/18

DRAWN BY:
RP

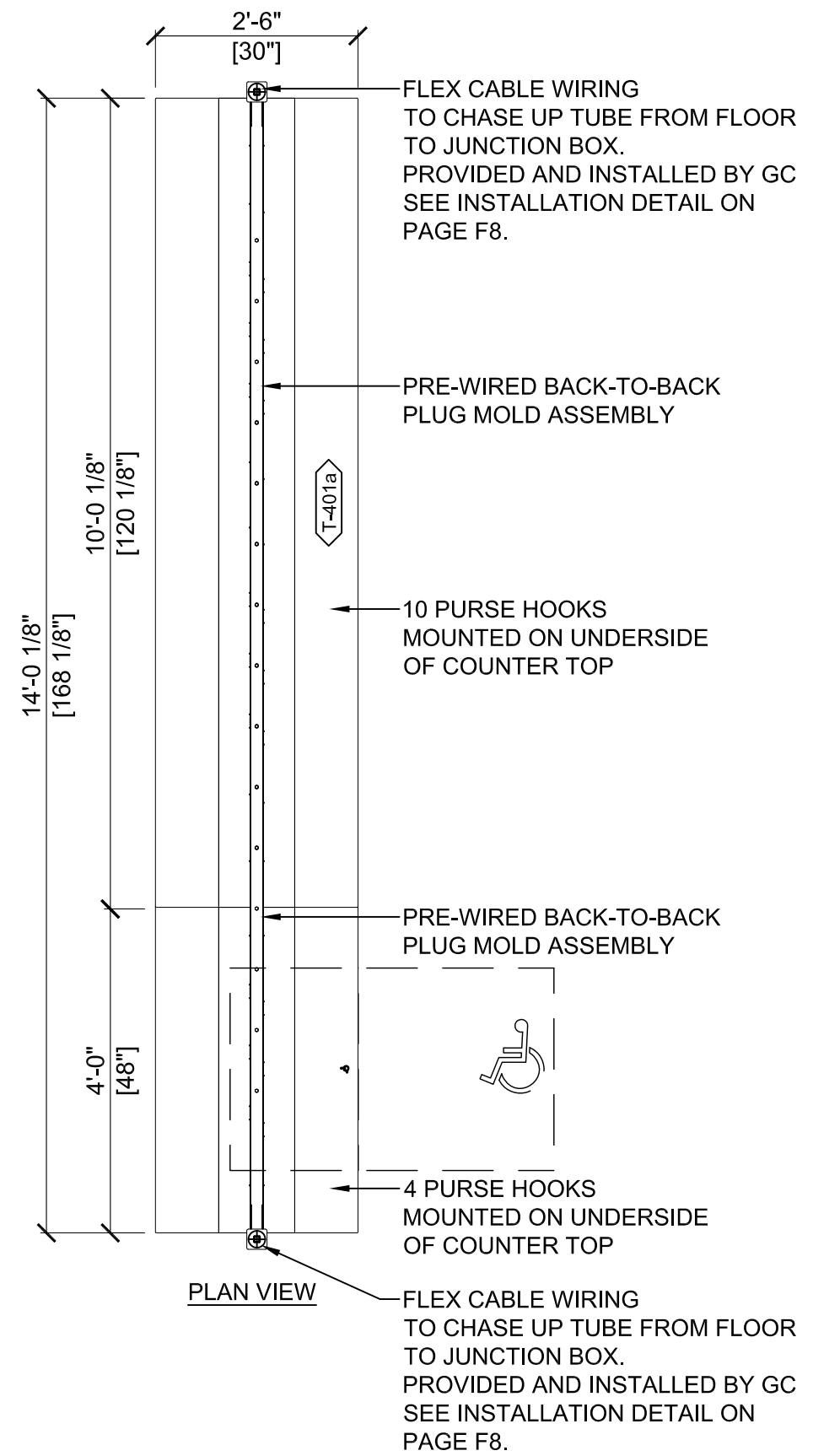
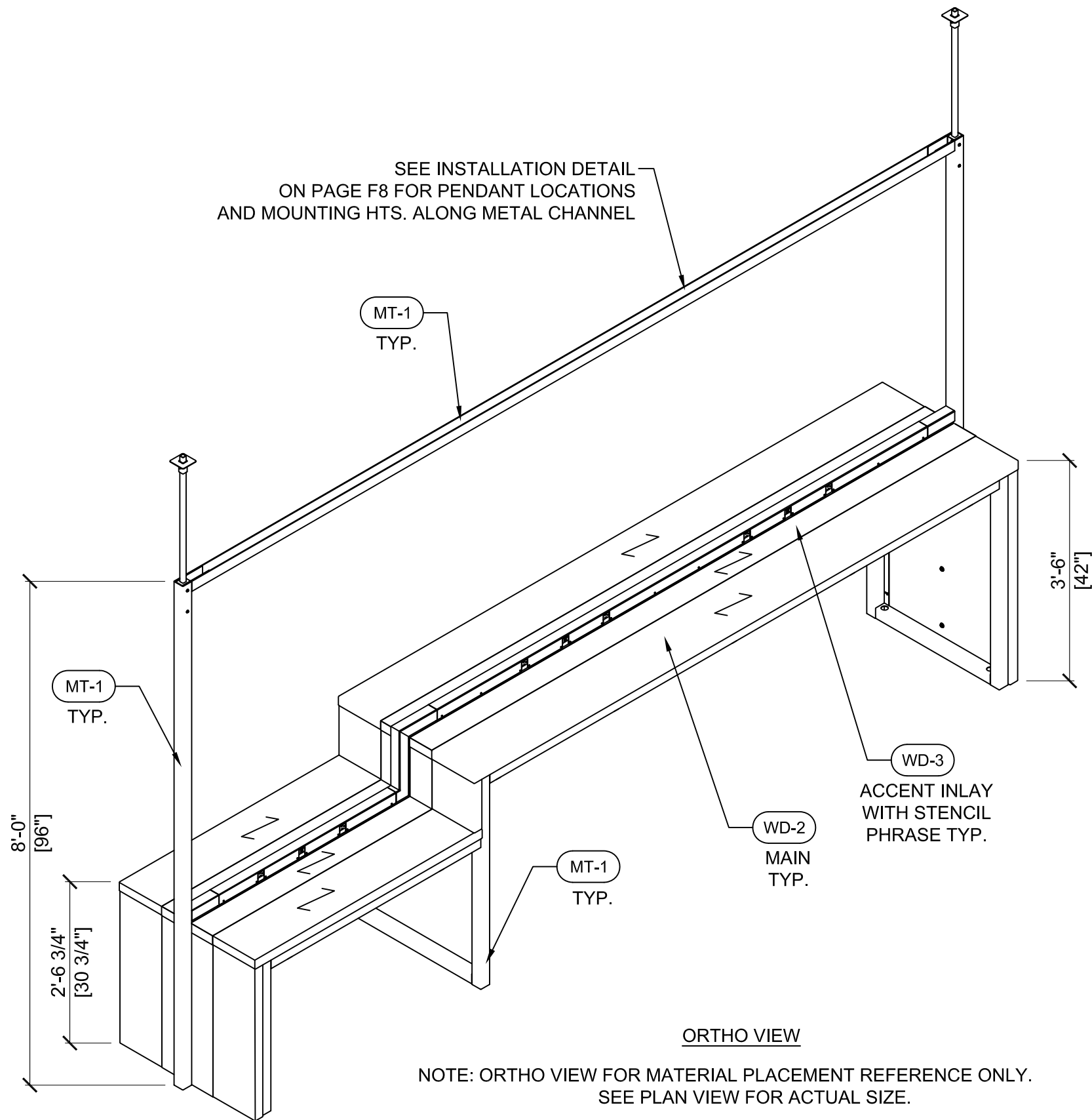
PROJECT INFORMATION

DRAWING TITLE:
PRODUCT DETAILS

DRAWING SCALE:
1/2" = 1'-0"

PROJECT ID:
33808

SHEET:
F5a of F8

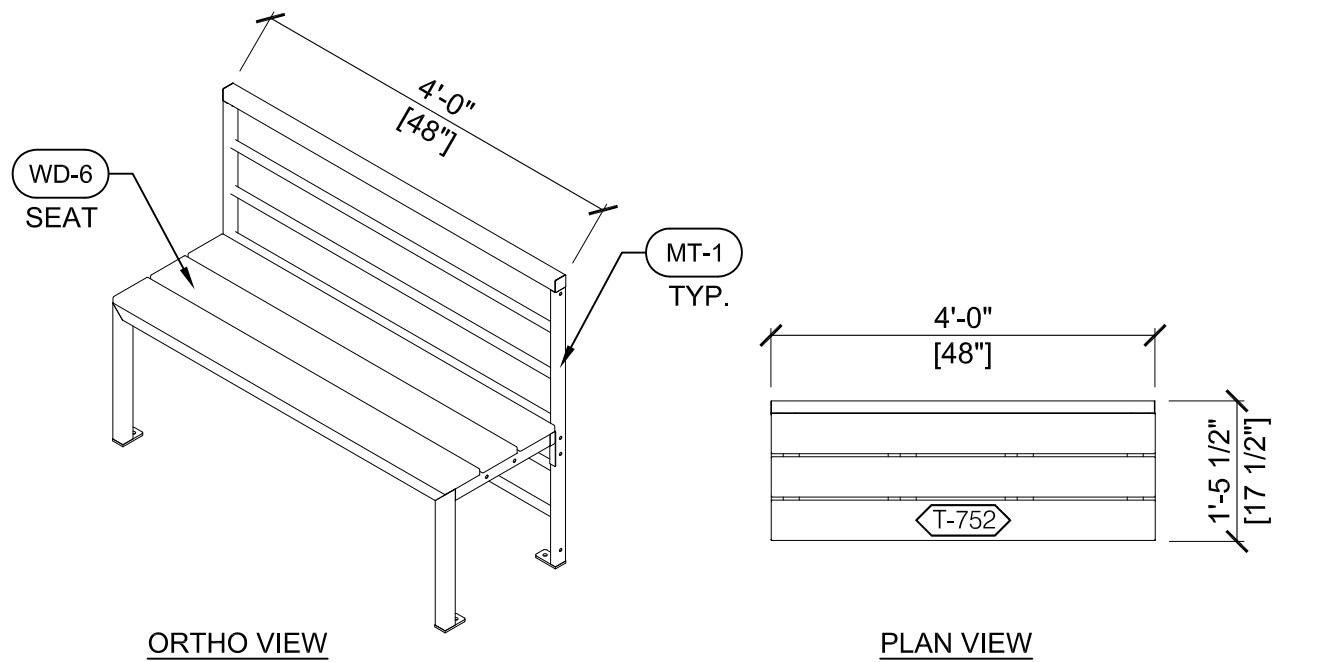


Hub Table with Stencil, ADA

SCALE: 1/2" = 1'-0"

TYAB0208

T-401a

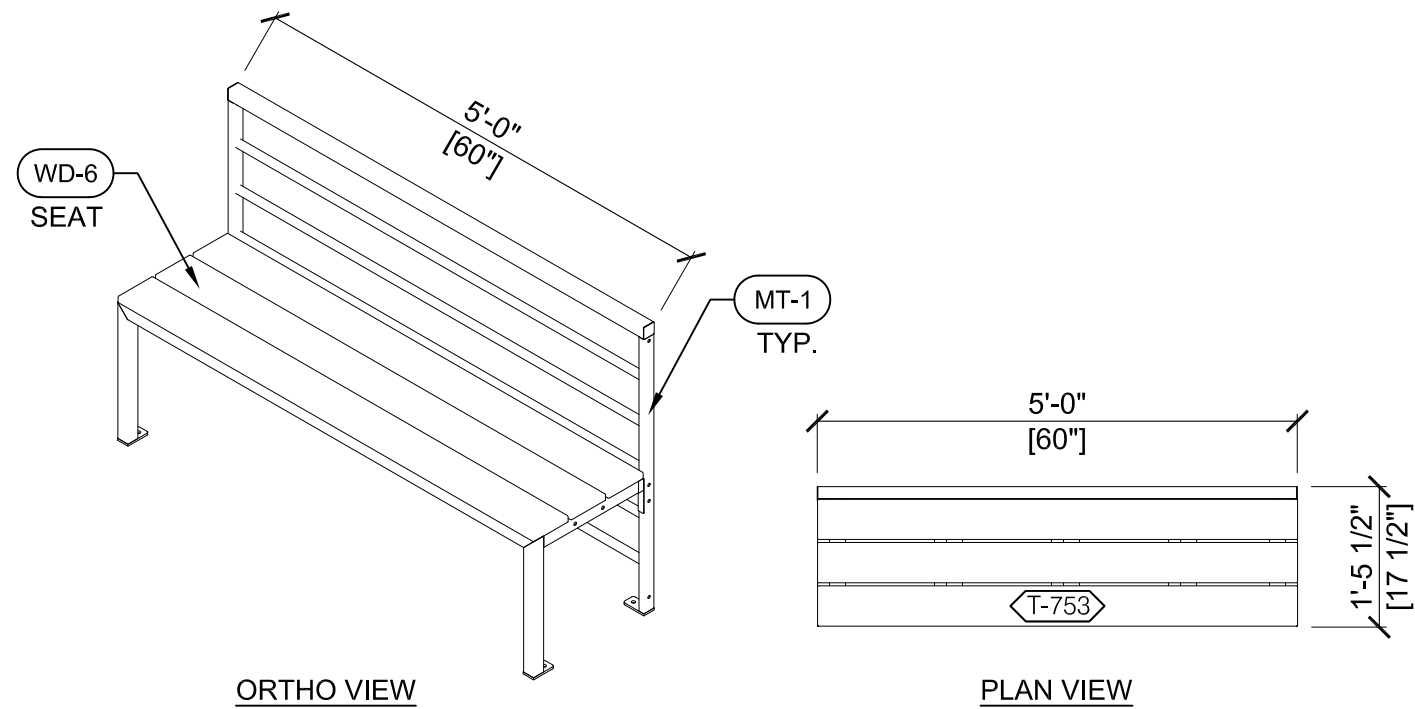


Outdoor Bench, 48"

SCALE: 1/2" = 1'-0"

TYAB0132.C

T-752

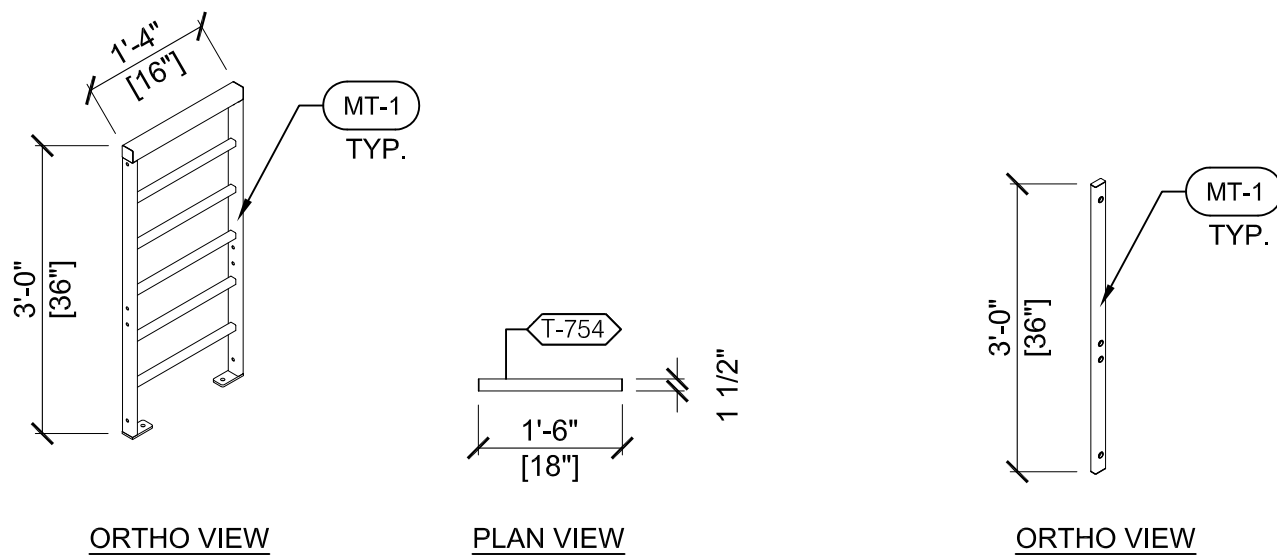


Outdoor Bench, 60"

SCALE: 1/2" = 1'-0"

TYAB0131

T-753

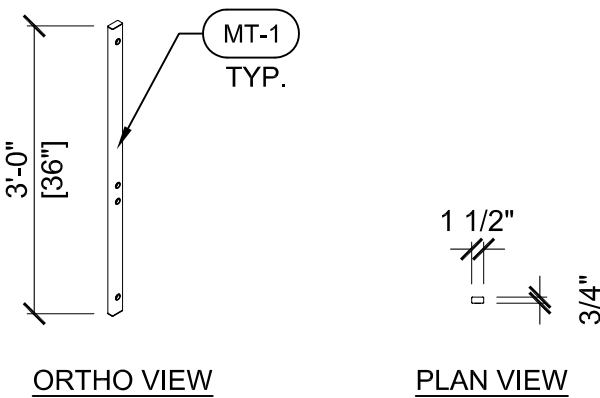


Outdoor Railing, 16"

SCALE: 1/2" = 1'-0"

TYAB0136.C

T-754

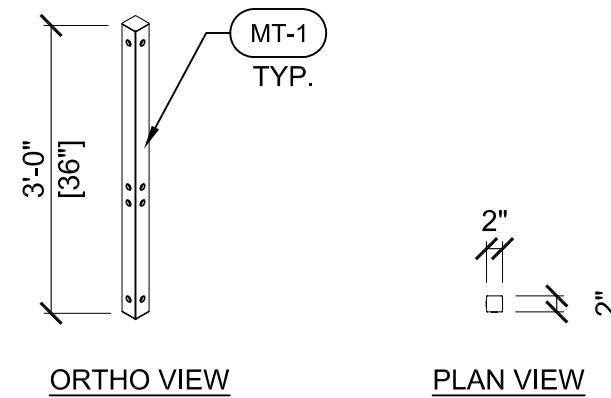


Outdoor End Post

SCALE: 1/2" = 1'-0"

TYAB0143.C

T-757



Outdoor Corner Post

SCALE: 1/2" = 1'-0"

TYAB0144.C

T-758



GLOBAL HEADQUARTERS
One Rider Trail Plaza, Suite 400
Earth City, MO 63045
T 314.739.4120
www.idxcorporation.com

CONFIDENTIAL:
This drawing and the information herein are the exclusive property of idx Corporation. Any reproduction of use without express written consent is strictly forbidden.
CA TITLE 17:
All composite wood products (MDF, PB, HWPW) are compliant. Place compliance label as shown within drawing (or per current standard) and do not remove after installation.
DIMENSIONS:
All dimensions are in inches unless noted otherwise - views are not to scale unless noted. Written dimensions take precedence over scale in all instances. Do not scale off drawings. Contact idx Corporation for confirmation of any questionable dimensions.

PROJECT MANAGER
Dennis Caruana
T 909.212.8375

ACCOUNT EXECUTIVE
Gordon Bjorkman
T 413.207.4098

idx CUSTOMER SERVICE
Jonathan Dunn
T 909.635.3541

PLEASE CONTACT THE PARTIES LISTED ABOVE FOR ASSISTANCE WITH ANY CONCERNS OR QUESTIONS.

PROJECT CONTACTS

The General Contractor (GC) shall verify all dimensions and conditions at the job site and notify idx Corporation of any/all discrepancies prior to starting work.

The GC is to review idx Corporation plans against the architectural drawing set being used on site. The GC shall notify idx Corporation immediately if there are discrepancies.

The GC is to install table bases on accessible table tops per ADAAG guidelines or per local code, whichever is most stringent.

GC/INSTALL NOTES



TACO BELL

PROJECT:
TACO BELL TRANSFORMATION
MODERN EXPLORER

LOCATION:
19000 NORTHLINE ROAD
SOUTHGATE, MI 48195

SET ISSUED DATE:
10/18/18

DRAWN BY:
RP

PROJECT INFORMATION

DRAWING TITLE:
PRODUCT DETAILS

DRAWING SCALE:
1/2" = 1'-0"

PROJECT ID:
33808

SHEET:

F5b of F8



ALUMINUM FINISH
MATTE BLACK M3

*NOTE - CHAIR FINISH PER WRITTEN SPECIFICATION
IMAGE FOR REPRESENTATIONAL PURPOSES ONLY

Ellipse Chair - Exterior TYAB4132

T-152b

SCALE: 1/2" = 1'-0"



MILD STEEL
MATTE BLACK

*NOTE - TABLE FINISH PER WRITTEN SPECIFICATION
IMAGE FOR REPRESENTATIONAL PURPOSES ONLY

24" Dia. Table - Exterior TYAB2135

T-454

SCALE: 1/2" = 1'-0"



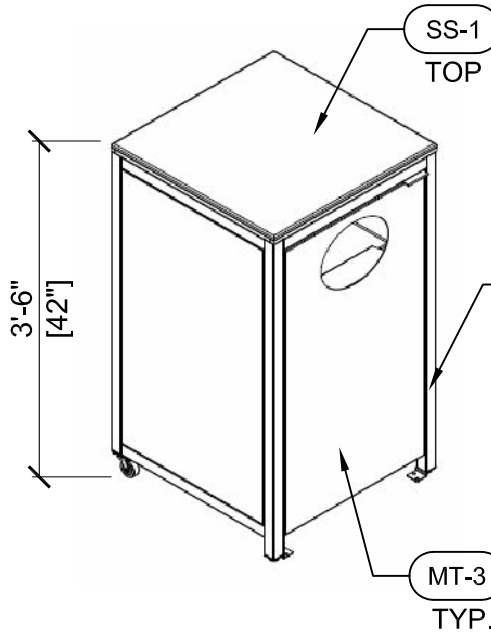
ALUMINUM FRAME-
TEXTURED GREY FINISH,
GREY ARTWOOD TOP

*NOTE - TABLE FINISH PER WRITTEN SPECIFICATION
IMAGE FOR REPRESENTATIONAL PURPOSES ONLY

24" x 48" ADA Table - Exterior TYAB2134

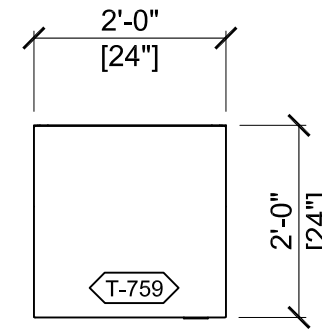
T-455

SCALE: 1/2" = 1'-0"



MT-1
TYP.

MT-3
TYP.



PLAN VIEW

NOTE: FRONT LEGS HAVE GLIDES, BACK LEGS HAVE 2" CASTERS

Exterior Waste Enclosure, Single TYAB2189

T-759

SCALE: 1/2" = 1'-0"



GLOBAL HEADQUARTERS
One Rider Trail Plaza, Suite 400
Earth City, MO 63045
T 314.739.4120
www.idxcorporation.com

CONFIDENTIAL:
This drawing and the information herein are the exclusive property of idX Corporation. Any reproduction of use without express written consent is strictly forbidden.
CA TITLE 17:
All composite wood products (MDF, PB, HWP/W) are compliant. Place compliance label as shown within drawing (or per current standard) and do not remove after installation.
DIMENSIONS:
All dimensions are in inches unless noted otherwise - views are not to scale unless noted. Written dimensions take precedence over scale in all instances. Do not scale off drawings. Contact idX Corporation for confirmation of any questionable dimensions.

PROJECT MANAGER
Dennis Caruana
T 909.212.8375

ACCOUNT EXECUTIVE
Gordon Bjorkman
T 413.207.4098

idX CUSTOMER SERVICE
Jonathan Dunn
T 909.635.3541

PLEASE CONTACT THE PARTIES LISTED ABOVE FOR ASSISTANCE WITH ANY CONCERNS OR QUESTIONS.

PROJECT CONTACTS

The General Contractor (GC) shall verify all dimensions and conditions at the job site and notify idX Corporation of any/all discrepancies prior to starting work.
The GC is to review idX Corporation plans against the architectural drawing set being used on site. The GC shall notify idX Corporation immediately if there are discrepancies.
The GC is to install table bases on accessible table tops per ADAAG guidelines or per local code, whichever is most stringent.

GC/INSTALL NOTES



TACO BELL

PROJECT:
TACO BELL TRANSFORMATION
MODERN EXPLORER

LOCATION:
19000 NORTHLINE ROAD
SOUTHGATE, MI 48195

SET ISSUED DATE:
10/18/18

DRAWN BY:
RP

PROJECT INFORMATION

DRAWING TITLE:
PRODUCT DETAILS

DRAWING SCALE:
1/2" = 1'-0"

PROJECT ID:
33808

SHEET:
F5c OF F8



GLOBAL HEADQUARTERS
 One Rider Trail Plaza, Suite 400
 Earth City, MO 63045
 T 314.739.4120
 www.idxcorporation.com

CONFIDENTIAL:
 This drawing and the information herein are the exclusive property of idx Corporation. Any reproduction of use without express written consent is strictly forbidden.
 CA TITLE 17:
 All composite wood products (MDF, PB, HWPW) are compliant. Place compliance label as shown within drawing (or per current standard) and do not remove after installation.
 DIMENSIONS:
 All dimensions are in inches unless noted otherwise - views are not to scale unless noted. Written dimensions take precedence over scale in all instances. Do not scale off drawings. Contact idx Corporation for confirmation of any questionable dimensions.

PROJECT MANAGER
 Dennis Caruana
 T 909.212.8375

ACCOUNT EXECUTIVE
 Gordon Bjorkman
 T 413.207.4098

idx CUSTOMER SERVICE
 Jonathan Dunn
 T 909.635.3541

PLEASE CONTACT THE PARTIES LISTED ABOVE FOR ASSISTANCE WITH ANY CONCERNS OR QUESTIONS.

PROJECT CONTACTS

The General Contractor (GC) shall verify all dimensions and conditions at the job site and notify idx Corporation of any/all discrepancies prior to starting work.
 The GC is to review idx Corporation plans against the architectural drawing set being used on site. The GC shall notify idx Corporation immediately if there are discrepancies.
 The GC is to install table bases on accessible table tops per ADAAG guidelines or per local code, whichever is most stringent.

GC/INSTALL NOTES



TACO BELL

PROJECT:
 TACO BELL TRANSFORMATION
 MODERN EXPLORER

LOCATION:
 19000 NORTHLINE ROAD
 SOUTHGATE, MI 48195

SET ISSUED DATE:
 10/18/18

DRAWN BY:
 RP

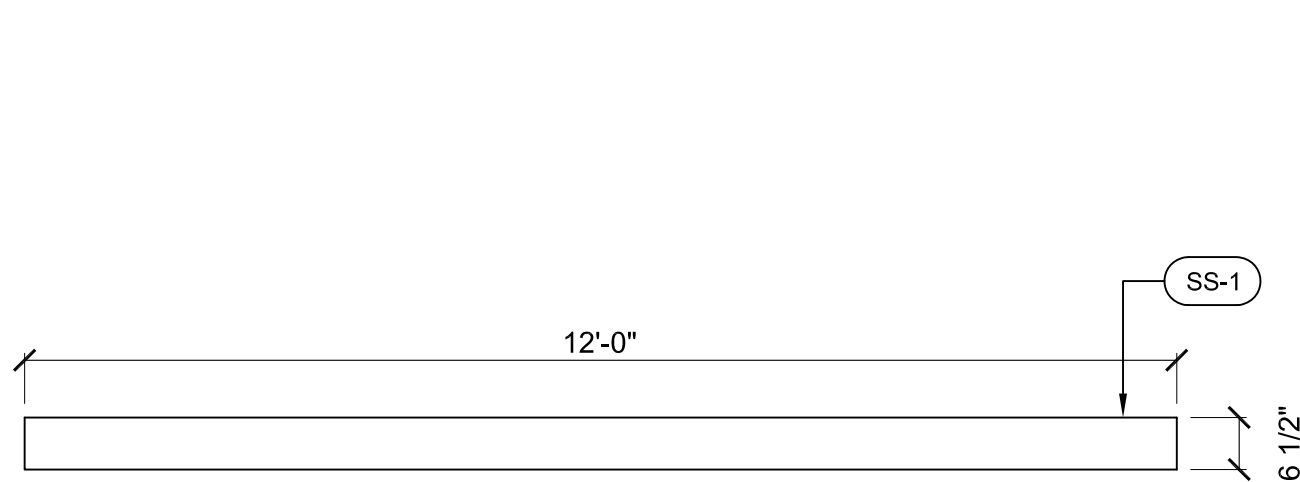
PROJECT INFORMATION

DRAWING TITLE:
 PRODUCT DETAILS

DRAWING SCALE:
 1/2" = 1'-0"

PROJECT ID:
 33808

SHEET:
 F5d of F8

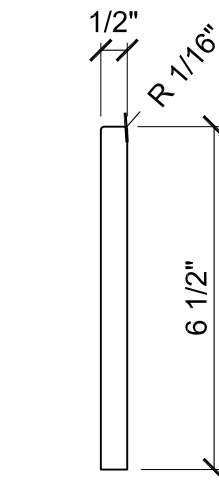


PLAN VIEW

NOTE: GC TO RIP, TRIM, AND INSTALL WINDOW SILL ON SITE AS INDICATED ON PAGE F4

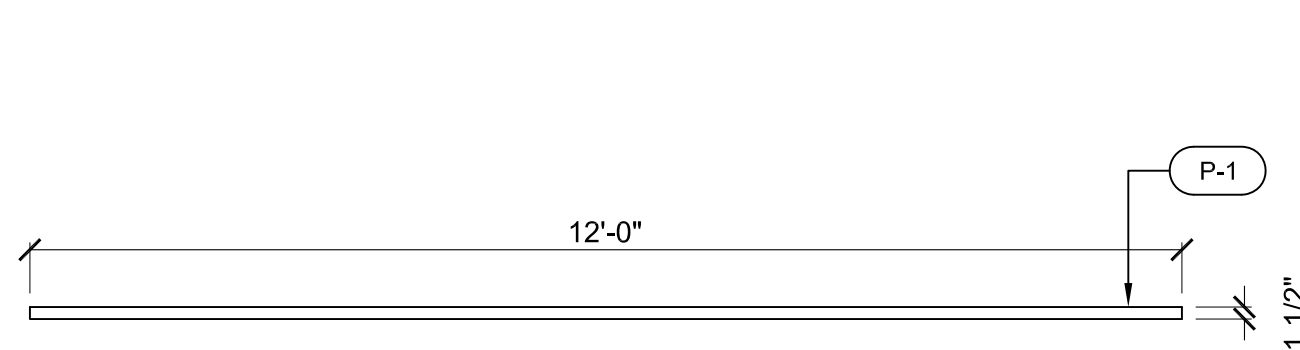
Window Sill, 6.5"

SCALE: 1/2" = 1'-0"



PROFILE DETAIL - N.T.S.

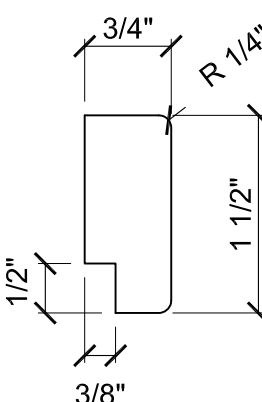
TYP10792 T-###



ELEV. VIEW

Chair Rail, 1.5"

SCALE: 1/2" = 1'-0"



PROFILE DETAIL - N.T.S.

TYAB2175 T-###



GLOBAL HEADQUARTERS
One Rider Trail Plaza, Suite 400
Earth City, MO 63045
T 314.739.4120
www.idxcorporation.com

CONFIDENTIAL:
This drawing and the information herein are the exclusive property of idx Corporation. Any reproduction of use without express written consent is strictly forbidden.
CA TITLE 17:
All composite wood products (MDF, PB, HWPW) are compliant. Place compliance label as shown within drawing (or per current standard) and do not remove after installation.
DIMENSIONS:
All dimensions are in inches unless noted otherwise - views are not to scale unless noted. Written dimensions take precedence over scale in all instances. Do not scale off drawings. Contact idx Corporation for confirmation of any questionable dimensions.

PROJECT MANAGER
Dennis Caruana
T 909.212.8375

ACCOUNT EXECUTIVE
Gordon Bjorkman
T 413.207.4098

idx CUSTOMER SERVICE
Jonathan Dunn
T 909.635.3541

PLEASE CONTACT THE PARTIES LISTED ABOVE FOR ASSISTANCE WITH ANY CONCERNS OR QUESTIONS.

PROJECT CONTACTS

The General Contractor (GC) shall verify all dimensions and conditions at the job site and notify idx Corporation of any/all discrepancies prior to starting work.

The GC is to review idx Corporation plans against the architectural drawing set being used on site. The GC shall notify idx Corporation immediately if there are discrepancies.

The GC is to install table bases on accessible table tops per ADAAG guidelines or per local code, whichever is most stringent.

GC/INSTALL NOTES



TACO BELL

PROJECT:
TACO BELL TRANSFORMATION
MODERN EXPLORER

LOCATION:
19000 NORTHLINE ROAD
SOUTHGATE, MI 48195

SET ISSUED DATE:
10/18/18

DRAWN BY:
RP

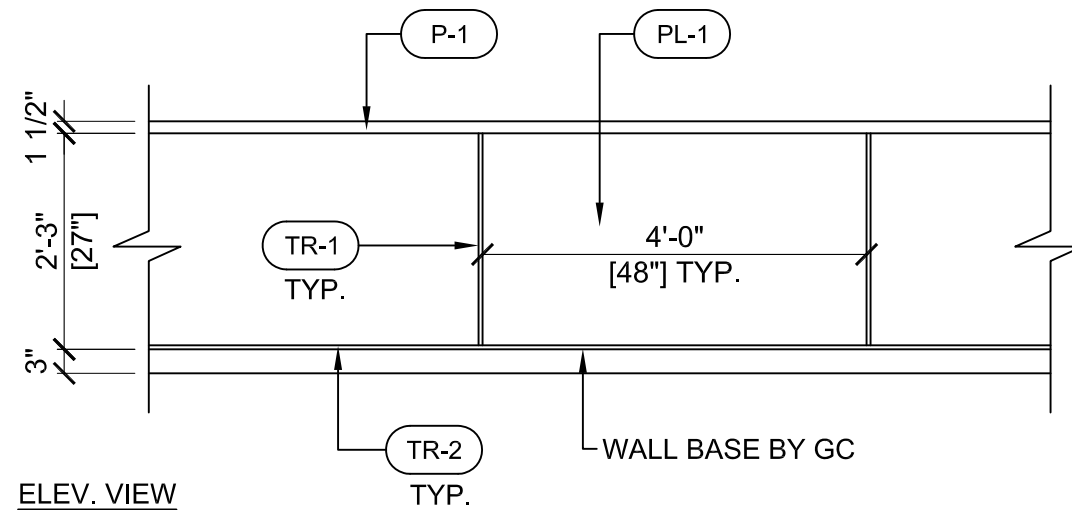
PROJECT INFORMATION

DRAWING TITLE:
PRODUCT DETAILS

DRAWING SCALE:
1/2" = 1'-0"

PROJECT ID:
33808

SHEET:
F5e of F8



ELEV. VIEW

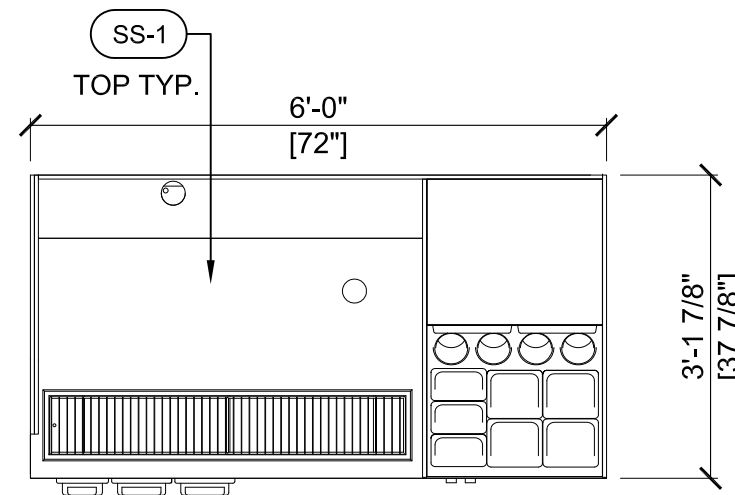
TR-3 - INSIDE/OUTSIDE CORNER TRIM AS NEEDED

NOTE: MATERIAL SENT AT 3'-0" H, GC TO TRIM IN FIELD AS NECESSARY
GC TO APPLY WAINSCOT PANELS WITH FRP ADHESIVE & TROWEL
SEE INSTALLATION DETAIL ON PAGE F8

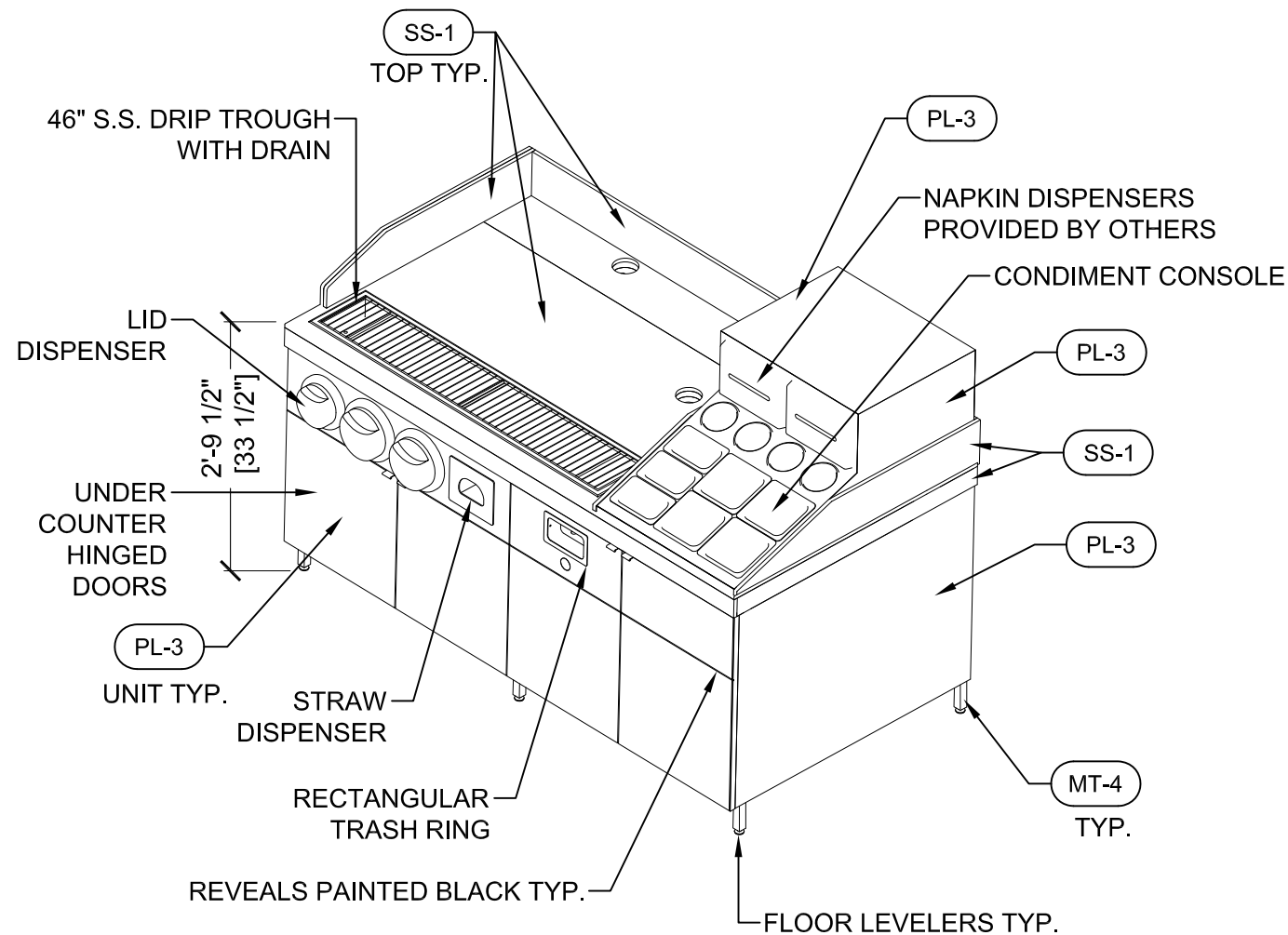
Wainscot

SCALE: 1/2" = 1'-0"

Z-###



PLAN VIEW



ORTHO VIEW

NOTE: INTERIOR FINISH - MEL-2
SEE INSTALLATION INSTRUCTIONS PROVIDED BY IDX FOR FURTHER DETAIL OF INSTALL ON SITE

All in One Sauce & Soda Station, Left Hand

SCALE: 1/2" = 1'-0"

TYAB2185.C

T-620a



GLOBAL HEADQUARTERS
 One Rider Trail Plaza, Suite 400
 Earth City, MO 63045
 T 314.739.4120
 www.idxcorporation.com

CONFIDENTIAL:
 This drawing and the information herein are the exclusive property of idx Corporation. Any reproduction of use without express written consent is strictly forbidden.
 CA TITLE 17:
 All composite wood products (MDF, PB, HWP/W) are compliant. Place compliance label as shown within drawing (or per current standard) and do not remove after installation.
 DIMENSIONS:
 All dimensions are in inches unless noted otherwise - views are not to scale unless noted. Written dimensions take precedence over scale in all instances. Do not scale off drawings. Contact idx Corporation for confirmation of any questionable dimensions.

PROJECT MANAGER
 Dennis Caruana
 T 909.212.8375

ACCOUNT EXECUTIVE
 Gordon Bjorkman
 T 413.207.4098

idx CUSTOMER SERVICE
 Jonathan Dunn
 T 909.635.3541

PLEASE CONTACT THE PARTIES LISTED ABOVE FOR ASSISTANCE WITH ANY CONCERNS OR QUESTIONS.

PROJECT CONTACTS

The General Contractor (GC) shall verify all dimensions and conditions at the job site and notify idx Corporation of any/all discrepancies prior to starting work.

The GC is to review idx Corporation plans against the architectural drawing set being used on site. The GC shall notify idx Corporation immediately if there are discrepancies.

The GC is to install table bases on accessible table tops per ADAAG guidelines or per local code, whichever is most stringent.

GC/INSTALL NOTES



TACO BELL

PROJECT:
 TACO BELL TRANSFORMATION
 MODERN EXPLORER

LOCATION:
 19000 NORTHLINE ROAD
 SOUTHGATE, MI 48195

SET ISSUED DATE:
 10/18/18

DRAWN BY:
 RP

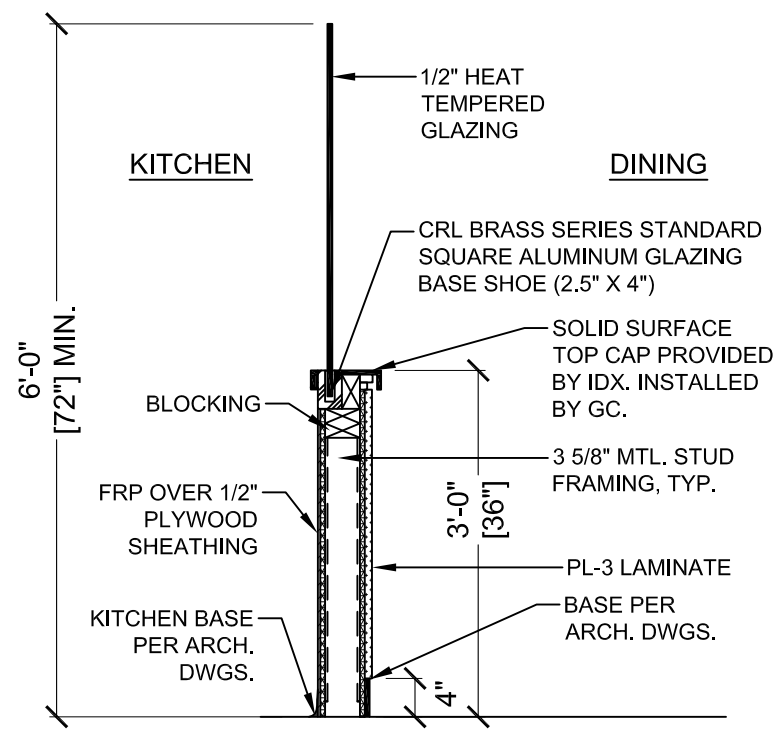
PROJECT INFORMATION

DRAWING TITLE:
 PRODUCT DETAILS

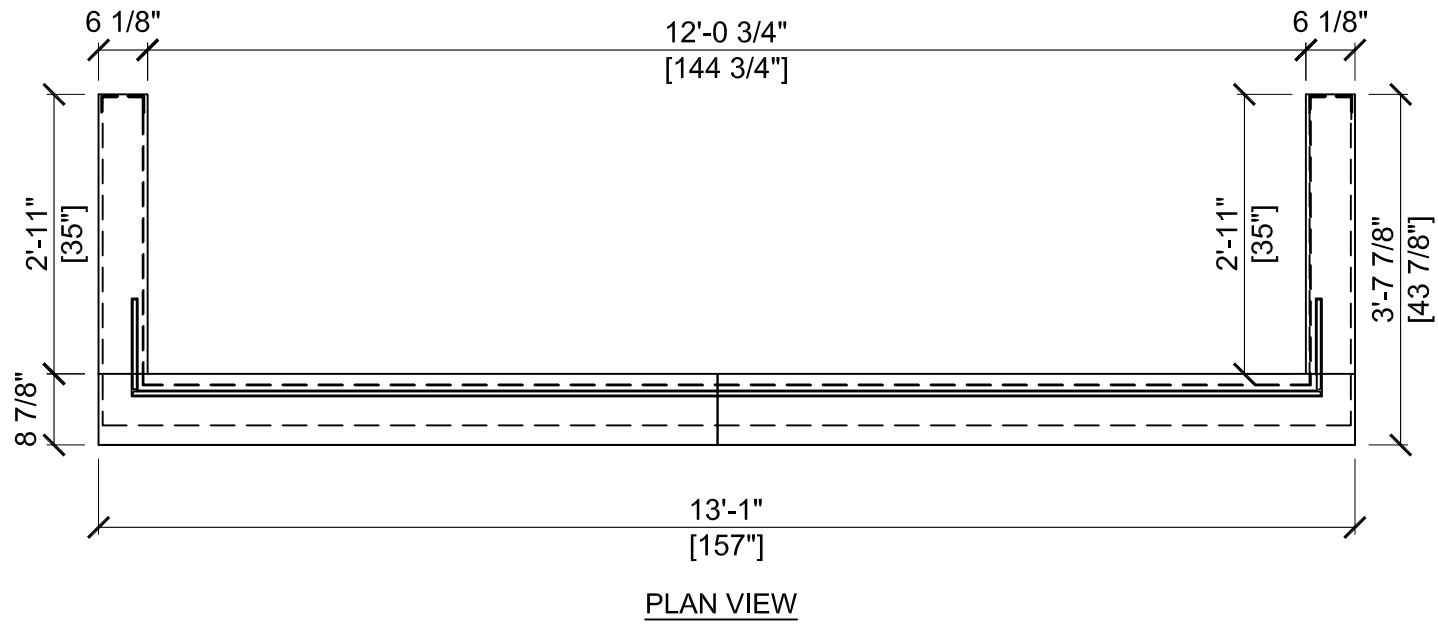
DRAWING SCALE:
 1/2" = 1'-0"

PROJECT ID:
 33808

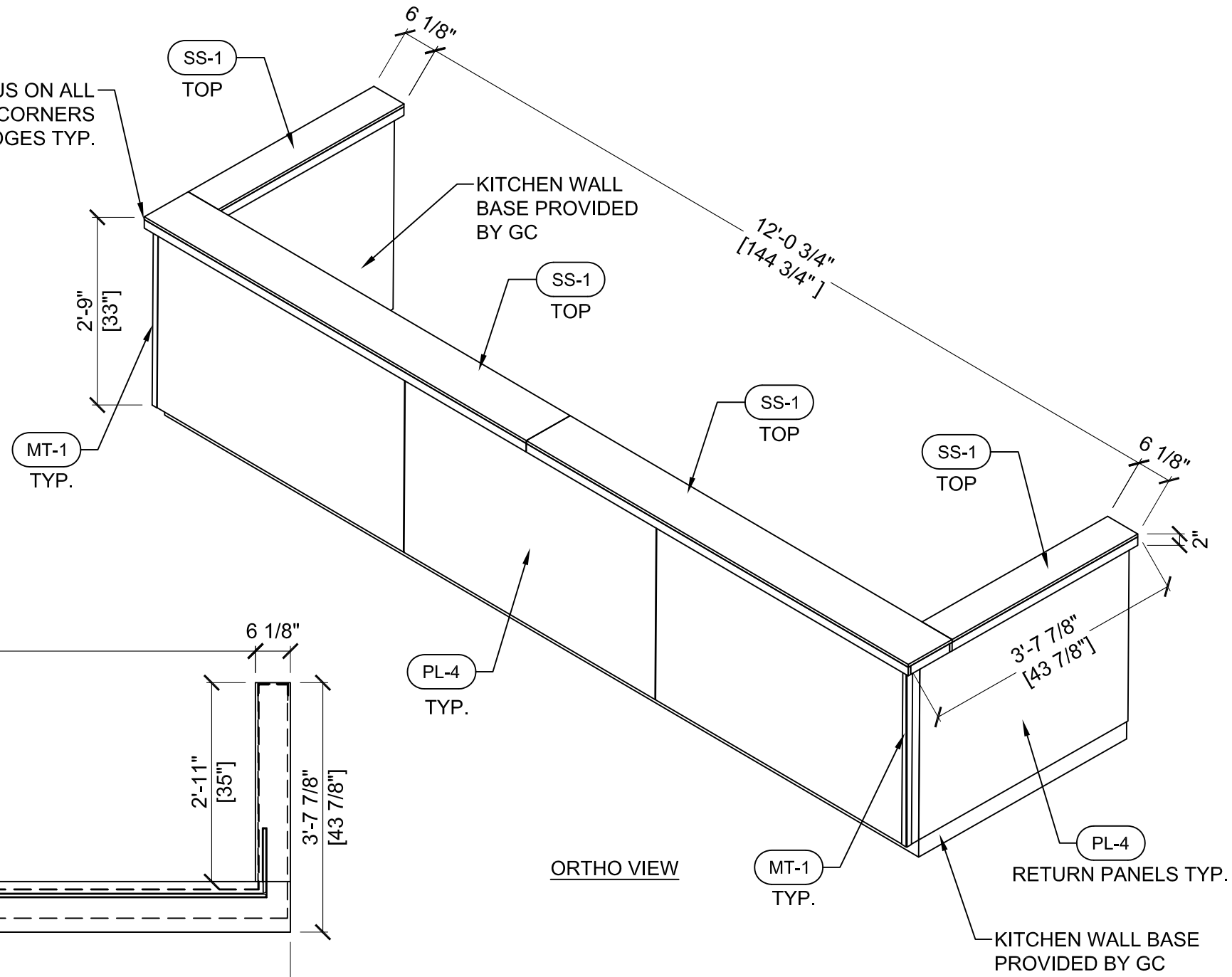
SHEET:
 F5f OF F8



WALL CONSTRUCTION BY GC AS SHOWN
 SECTION VIEW - N.T.S.



PLAN VIEW



ORTHO VIEW

NOTE: IDX TO PROVIDE OPEN KITCHEN WALL SILL AND FRONT CLADDING, GC TO INSTALL AND SCRIBE ON SITE AS NECESSARY
 GC TO PROVIDE AND INSTALL GLASS PARTITION AS SHOWN IN DETAIL ABOVE

Open Kitchen Wall Sill and Front Cladding

SCALE: 1/2" = 1'-0"

T-###

1



GLOBAL HEADQUARTERS
One Rider Trail Plaza, Suite 400
Earth City, MO 63045
T 314.739.4120
www.idxcorporation.com

CONFIDENTIAL:
This drawing and the information herein are the exclusive property of idx Corporation. Any reproduction of use without express written consent is strictly forbidden.
CA TITLE 17:
All composite wood products (MDF, PB, HWPW) are compliant. Place compliance label as shown within drawing (or per current standard) and do not remove after installation.
DIMENSIONS:
All dimensions are in inches unless noted otherwise - views are not to scale unless noted. Written dimensions take precedence over scale in all instances. Do not scale off drawings. Contact idx Corporation for confirmation of any questionable dimensions.

PROJECT MANAGER
Dennis Caruana
T 909.212.8375

ACCOUNT EXECUTIVE
Gordon Bjorkman
T 413.207.4098

idx CUSTOMER SERVICE
Jonathan Dunn
T 909.635.3541

PLEASE CONTACT THE PARTIES LISTED ABOVE FOR ASSISTANCE WITH ANY CONCERNS OR QUESTIONS.

PROJECT CONTACTS

The General Contractor (GC) shall verify all dimensions and conditions at the job site and notify idx Corporation of any/all discrepancies prior to starting work.

The GC is to review idx Corporation plans against the architectural drawing set being used on site. The GC shall notify idx Corporation immediately if there are discrepancies.

The GC is to install table bases on accessible table tops per ADAAG guidelines or per local code, whichever is most stringent.

GC/INSTALL NOTES



TACO BELL

PROJECT:
TACO BELL TRANSFORMATION
MODERN EXPLORER

LOCATION:
19000 NORTHLINE ROAD
SOUTHGATE, MI 48195

SET ISSUED DATE:
10/18/18

DRAWN BY:
RP

PROJECT INFORMATION

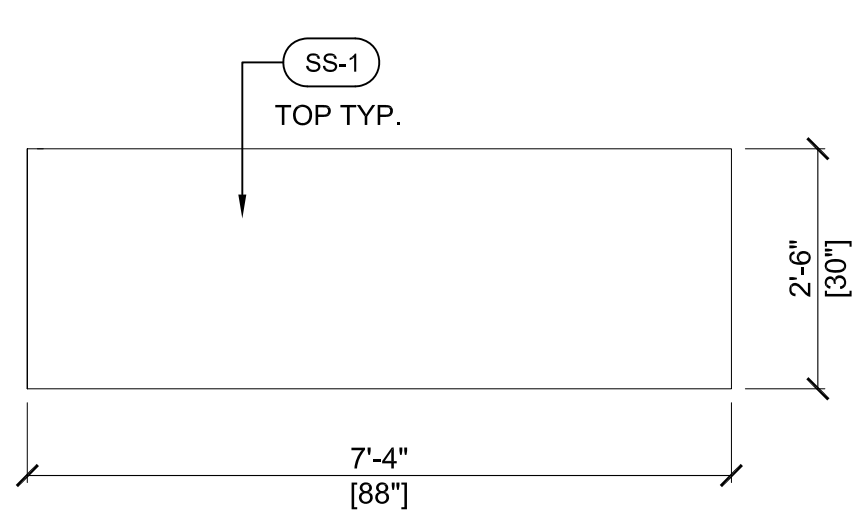
DRAWING TITLE:
PRODUCT DETAILS

DRAWING SCALE:
1/2" = 1'-0"

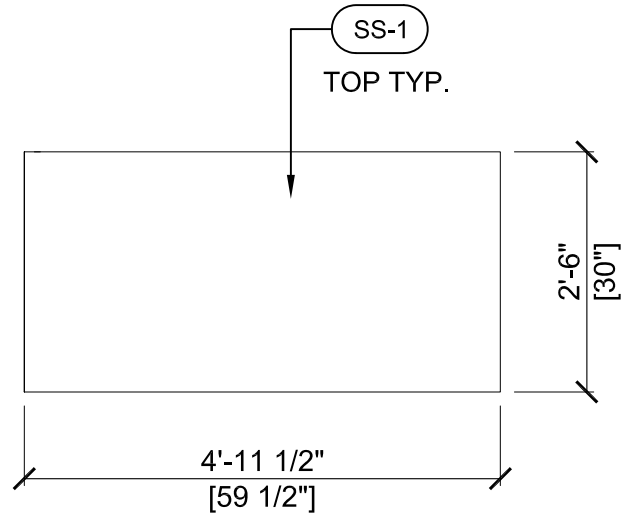
PROJECT ID:
33808

SHEET:
F5g of F8

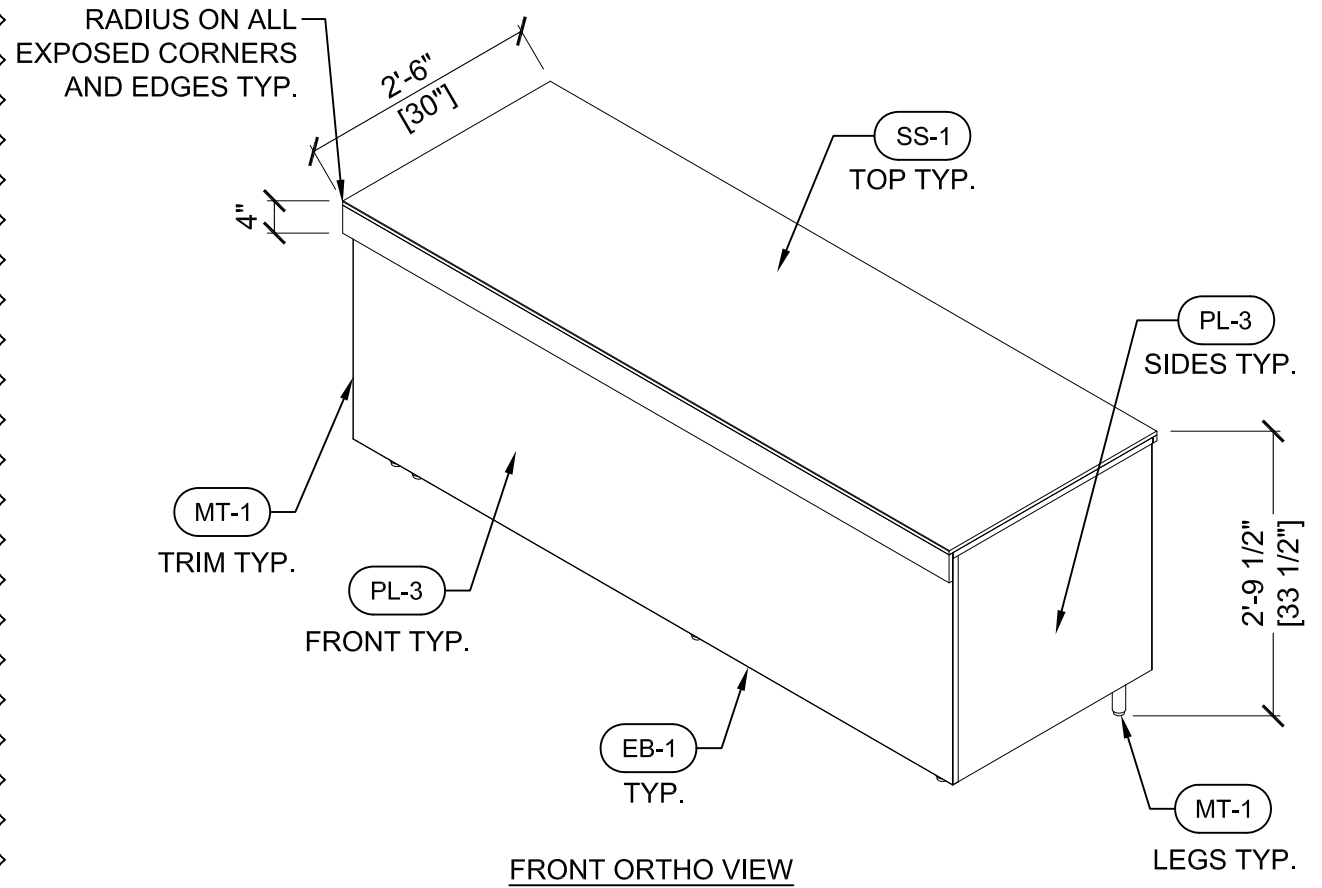
1



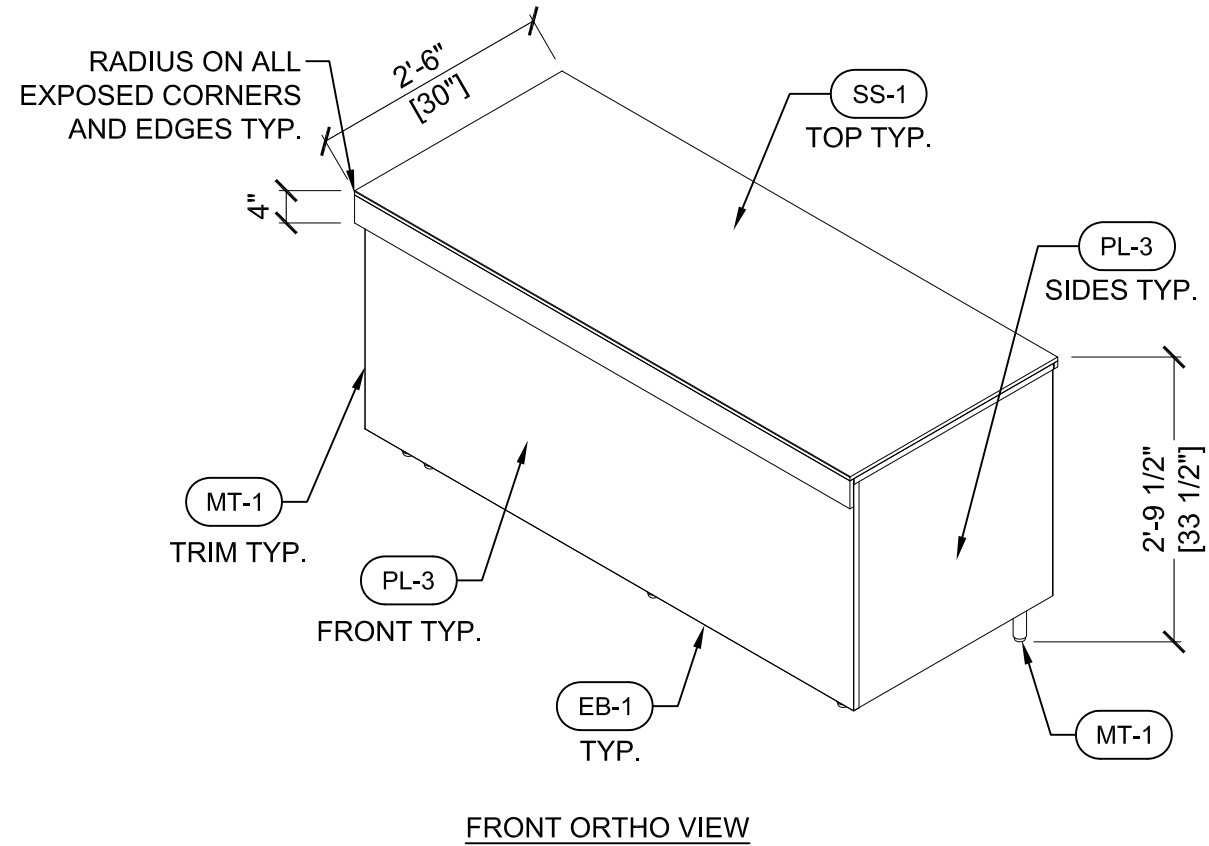
PLAN VIEW



PLAN VIEW



FRONT ORTHO VIEW



FRONT ORTHO VIEW

NOTE: ELECTRICAL ACCESS FROM THE WORKING SIDE OF THE POS UNIT ONLY

POS Unit

SCALE: 1/2" = 1'-0"

T-###

Handoff Unit

SCALE: 1/2" = 1'-0"

T-###



GLOBAL HEADQUARTERS
 One Rider Trail Plaza, Suite 400
 Earth City, MO 63045
 T 314.739.4120
 www.idxcorporation.com

CONFIDENTIAL:
 This drawing and the information herein are the exclusive property of idx Corporation. Any reproduction of use without express written consent is strictly forbidden.
 CA TITLE 17:
 All composite wood products (MDF, PB, HWPW) are compliant. Place compliance label as shown within drawing (or per current standard) and do not remove after installation.
 DIMENSIONS:
 All dimensions are in inches unless noted otherwise - views are not to scale unless noted. Written dimensions take precedence over scale in all instances. Do not scale off drawings. Contact idx Corporation for confirmation of any questionable dimensions.

PROJECT MANAGER
 Dennis Caruana
 T 909.212.8375

ACCOUNT EXECUTIVE
 Gordon Bjorkman
 T 413.207.4098

idx CUSTOMER SERVICE
 Jonathan Dunn
 T 909.635.3541

PLEASE CONTACT THE PARTIES LISTED ABOVE FOR ASSISTANCE WITH ANY CONCERNS OR QUESTIONS.

PROJECT CONTACTS

The General Contractor (GC) shall verify all dimensions and conditions at the job site and notify idx Corporation of any/all discrepancies prior to starting work.

The GC is to review idx Corporation plans against the architectural drawing set being used on site. The GC shall notify idx Corporation immediately if there are discrepancies.

The GC is to install table bases on accessible table tops per ADAAG guidelines or per local code, whichever is most stringent.

GC/INSTALL NOTES



TACO BELL

PROJECT:
 TACO BELL TRANSFORMATION
 MODERN EXPLORER

LOCATION:
 19000 NORTHLINE ROAD
 SOUTHGATE, MI 48195

SET ISSUED DATE:
 10/18/18

DRAWN BY:
 RP

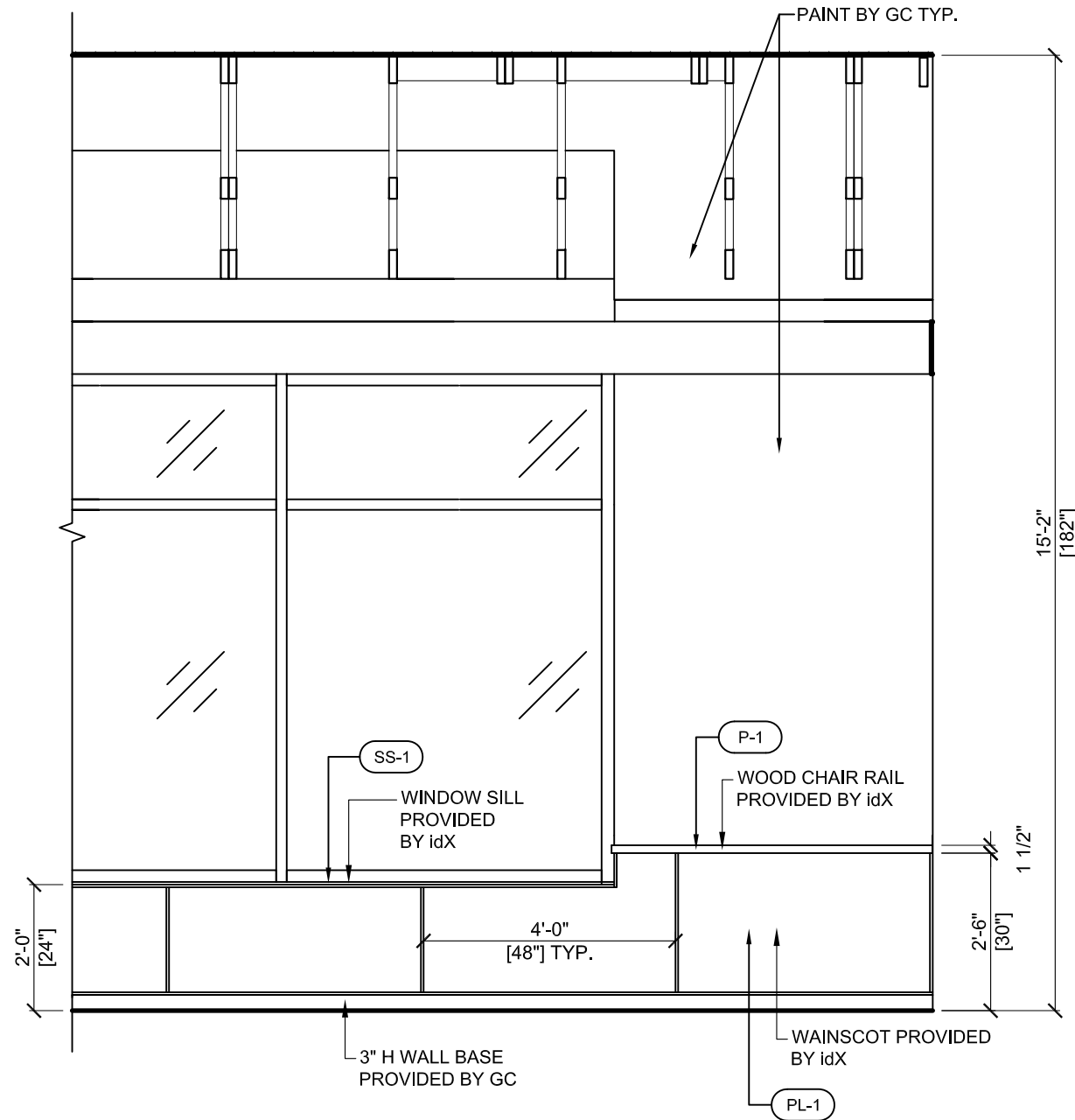
PROJECT INFORMATION

DRAWING TITLE:
 ELEVATIONS

DRAWING SCALE:
 3/8" = 1'-0"

PROJECT ID:
 33808

SHEET:
 F6 OF F8



1

TYPICAL BUILDING WALL ELEVATION

SCALE: 3/8" = 1'-0"

idX Specifications - Taco Bell
Transformational - Modern Explorer

WOOD FINISHES					
CODE	MANUFACTURER	PRODUCT NAME	FINISH	SUPPLIER	CONTACT
WD-1	idX Corporation	Rustic Oak Veneer Plywood, ST-3, Weathered Grey Hue #1	Conversion Varnish, 20% Sheen	idX Corporation	-
WD-2	idX Corporation	Solid White Oak, ST-3, Weathered Grey, Random Hue	Conversion Varnish, 20% Sheen	idX Corporation	-
WD-3	idX Corporation	Reclaimed Wood with WD-10 White Stain and Stencil Lettering	-	idX Corporation	-
WD-4	idX Corporation	Rustic Oak Veneer Plywood, ST-4, Medium Brown	Conversion Varnish, 20% Sheen	idX Corporation	-
WD-5	idX Corporation	Solid White Oak, ST-3, Weathered Grey Hue #1	Conversion Varnish, 20% Sheen	idX Corporation	-
WD-6	idX Corporation	Solid Unfinished Western Cedar	-	idX Corporation	-
METAL FINISHES					
CODE	MANUFACTURER	PRODUCT NAME	FINISH	SUPPLIER	CONTACT
MT-1	idX Corporation	Powdercoat, PC-4 - Black Wrinkle	Exterior	idX Corporation	-
MT-2	idX Corporation	Perforated Metal Panel, Powdercoat, PC-4 - Black Wrinkle	Exterior	idX Corporation	-
MT-3	idX Corporation	Metal, Powdercoat, PC-10, Bronze Metallic	Bronze Fine Texture Exterior	idX Corporation	-
MT-4	idX Corporation	Stainless Steel	Brushed	idX Corporation	-
LAMINATE FINISHES					
CODE	MANUFACTURER	PRODUCT NAME	FINISH	SUPPLIER	CONTACT
PL-1	Wilsonart	D327-60, Pepperdust (Wainscot)	Matte Finish	idX Corporation	-
PL-2	Wilsonart	1595-60, Black (POS counter)	Matte Finish	idX Corporation	-
PL-3	Wilsonart	4888-38, Rustic Slate (POS/Pick Up Fascia, Sauce & Soda)	Fine Velvet Finish	idX Corporation	-
PL-4	Wilsonart	4994-22, Fired Steel (Open Kitchen Wall Fascia)	Antique Finish	idX Corporation	-
EDGE BAND FINISHES					
CODE	MANUFACTURER	PRODUCT NAME	FINISH	SUPPLIER	CONTACT
EB-1	-	PVC, 0.5mm Black	-	idX Corporation	-
TRIM FINISHES					
CODE	MANUFACTURER	PRODUCT NAME	FINISH	SUPPLIER	CONTACT
TR-1	-	H Channel Trim, 12' Length	Satin Anodized	idX Corporation	-
TR-2	-	J Channel Trim, 12' Length	Satin Anodized	idX Corporation	-
TR-3	-	Inside/Outside Corner Trim, 12' Length	Satin Anodized	idX Corporation	-
MELAMINE FINISHES					
CODE	MANUFACTURER	PRODUCT NAME	FINISH	SUPPLIER	CONTACT
MEL-1	-	Melamine, Olympic White	-	idX Corporation	-
MEL-2	-	Melamine, Black	-	idX Corporation	-
PAINT FINISHES					
CODE	MANUFACTURER	PRODUCT NAME	FINISH	SUPPLIER	CONTACT
P-1	Sherwin Williams	SW-7043, Worldy Gray	Eggshell Latex	idX Corporation	-
SOLID SURFACE FINISHES					
CODE	MANUFACTURER	PRODUCT NAME	FINISH	SUPPLIER	CONTACT
SS-1	Samsung	Staron, Bright White, BW010	#5 Sheen	idX Corporation	-



GLOBAL HEADQUARTERS
One Rider Trail Plaza, Suite 400
Earth City, MO 63045
T 314.739.4120
www.idxcorporation.com

CONFIDENTIAL:
This drawing and the information herein are the exclusive property of idX Corporation. Any reproduction of use without express written consent is strictly forbidden.
CA TITLE 17:
All composite wood products (MDF, PB, HWP/W) are compliant. Place compliance label as shown within drawing (or per current standard) and do not remove after installation.
DIMENSIONS:
All dimensions are in inches unless noted otherwise - views are not to scale unless noted. Written dimensions take precedence over scale in all instances. Do not scale off drawings. Contact idX Corporation for confirmation of any questionable dimensions.

PROJECT MANAGER
Dennis Caruana
T 909.212.8375
ACCOUNT EXECUTIVE
Gordon Bjorkman
T 413.207.4098
idX CUSTOMER SERVICE
Jonathan Dunn
T 909.635.3541
PLEASE CONTACT THE PARTIES LISTED ABOVE FOR ASSISTANCE WITH ANY CONCERNS OR QUESTIONS.

PROJECT CONTACTS

The General Contractor (GC) shall verify all dimensions and conditions at the job site and notify idX Corporation of any/all discrepancies prior to starting work.
The GC is to review idX Corporation plans against the architectural drawing set being used on site. The GC shall notify idX Corporation immediately if there are discrepancies.
The GC is to install table bases on accessible table tops per ADAAG guidelines or per local code, whichever is most stringent.

GC/INSTALL NOTES



PROJECT:
TACO BELL TRANSFORMATION
MODERN EXPLORER

LOCATION:
19000 NORTHLINE ROAD
SOUTHGATE, MI 48195

SET ISSUED DATE:
10/18/18

DRAWN BY:
RP

PROJECT INFORMATION

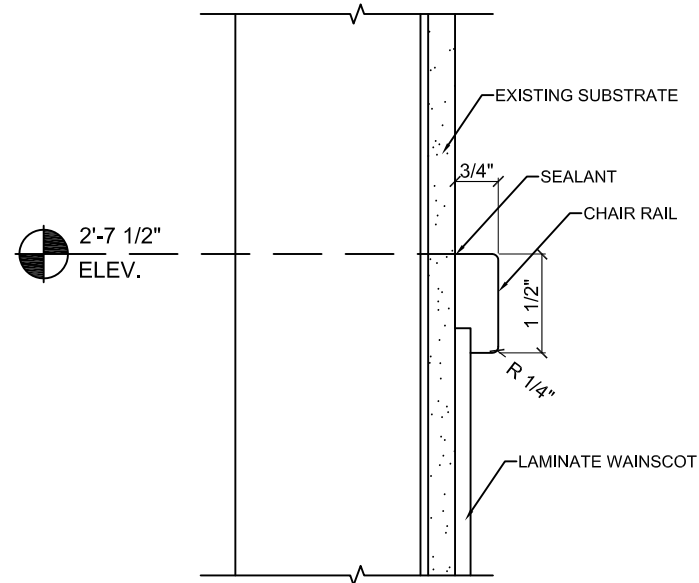
DRAWING TITLE:
SPECIFICATIONS

DRAWING SCALE:
NOT TO SCALE

PROJECT ID:
33808

SHEET:
F7 OF F8

NOTE: SEE INTERIOR ELEVATIONS FOR FINISHES

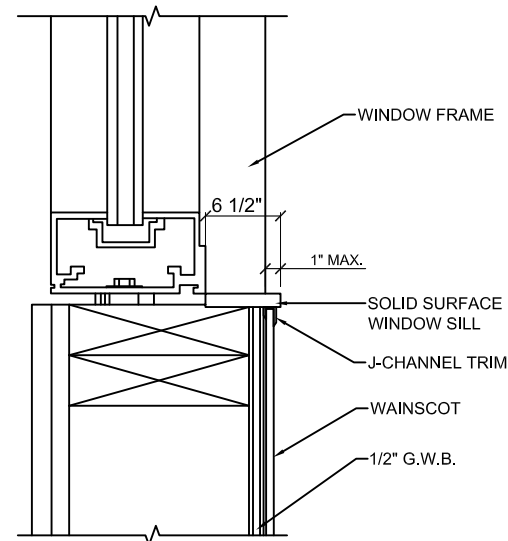


CHAIR RAIL DETAIL

SUPPLIED BY IDX, INSTALLED ON SITE BY GC

NOT TO SCALE

NOTE: SEE INTERIOR ELEVATIONS FOR FINISHES



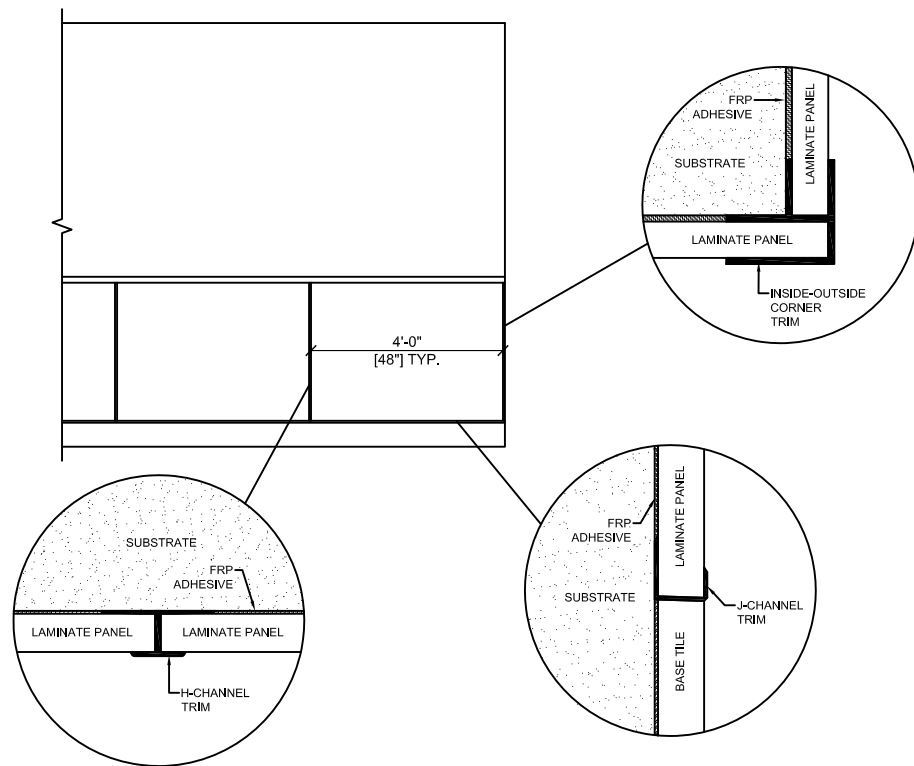
WINDOW SILL DETAIL

SUPPLIED BY IDX, INSTALLED ON SITE BY GC

NOT TO SCALE

IMPORTANT NOTES

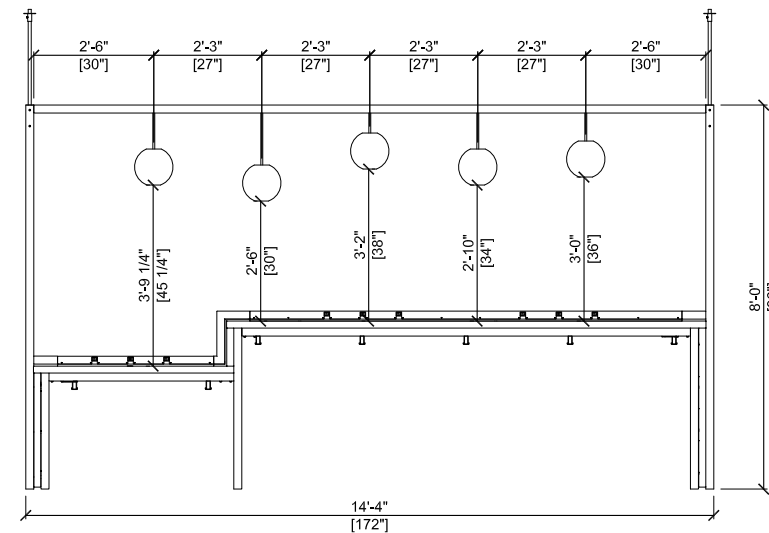
- GC TO INSTALL J-CHANNEL TRIM AT BASE OF LAMINATE PANELS & UNDER ALL WINDOW SILLS
- GC TO INSTALL INSIDE-OUTSIDE CORNER TRIM ON ALL CORNERS
- GC TO INSTALL H-CHANNEL TRIM BETWEEN 4'-0" LAMINATE PANEL WIDTHS
- MODIFICATIONS TO TRIM PIECES ON SITE ARE NOT PERMITTED



LAMINATE WAINSCOT DETAIL

SUPPLIED BY IDX, INSTALLED ON SITE BY GC

NOT TO SCALE



HUB TABLE DETAIL

*INSTALLER NOTE: GC TO DRILL METAL CHANNEL TO ACCOMMODATE MOUNTING PENDANT LIGHTS PER DIMENSIONS SPECIFIED. HOLE TO BE CENTERED IN CHANNEL TO ACCOMMODATE PENDANT LIGHT.

SUPPLIED BY IDX, INSTALLED ON SITE BY GC

NOT TO SCALE



GLOBAL HEADQUARTERS
 One Rider Trail Plaza, Suite 400
 Earth City, MO 63045
 T 314.739.4120
 www.idxcorporation.com

CONFIDENTIAL:
 This drawing and the information herein are the exclusive property of idx Corporation. Any reproduction of use without express written consent is strictly forbidden.
 CA TITLE 17:
 All composite wood products (MDF, PB, HWPW) are compliant. Place compliance label as shown within drawing (or per current standard) and do not remove after installation.
DIMENSIONS:
 All dimensions are in inches unless noted otherwise - views are not to scale unless noted. Written dimensions take precedence over scale in all instances. Do not scale off drawings. Contact idx Corporation for confirmation of any questionable dimensions.

PROJECT MANAGER
 Dennis Caruana
 T 909.212.8375

ACCOUNT EXECUTIVE
 Gordon Bjorkman
 T 413.207.4098

idx CUSTOMER SERVICE
 Jonathan Dunn
 T 909.635.3541

PLEASE CONTACT THE PARTIES LISTED ABOVE FOR ASSISTANCE WITH ANY CONCERNS OR QUESTIONS.

PROJECT CONTACTS

The General Contractor (GC) shall verify all dimensions and conditions at the job site and notify idx Corporation of any/all discrepancies prior to starting work.

The GC is to review idx Corporation plans against the architectural drawing set being used on site. The GC shall notify idx Corporation immediately if there are discrepancies.

The GC is to install table bases on accessible table tops per ADAAG guidelines or per local code, whichever is most stringent.

GC/INSTALL NOTES



TACO BELL

PROJECT:
 TACO BELL TRANSFORMATION
 MODERN EXPLORER

LOCATION:
 19000 NORTHLINE ROAD
 SOUTHGATE, MI 48195

SET ISSUED DATE:
 10/18/18

DRAWN BY:
 RP

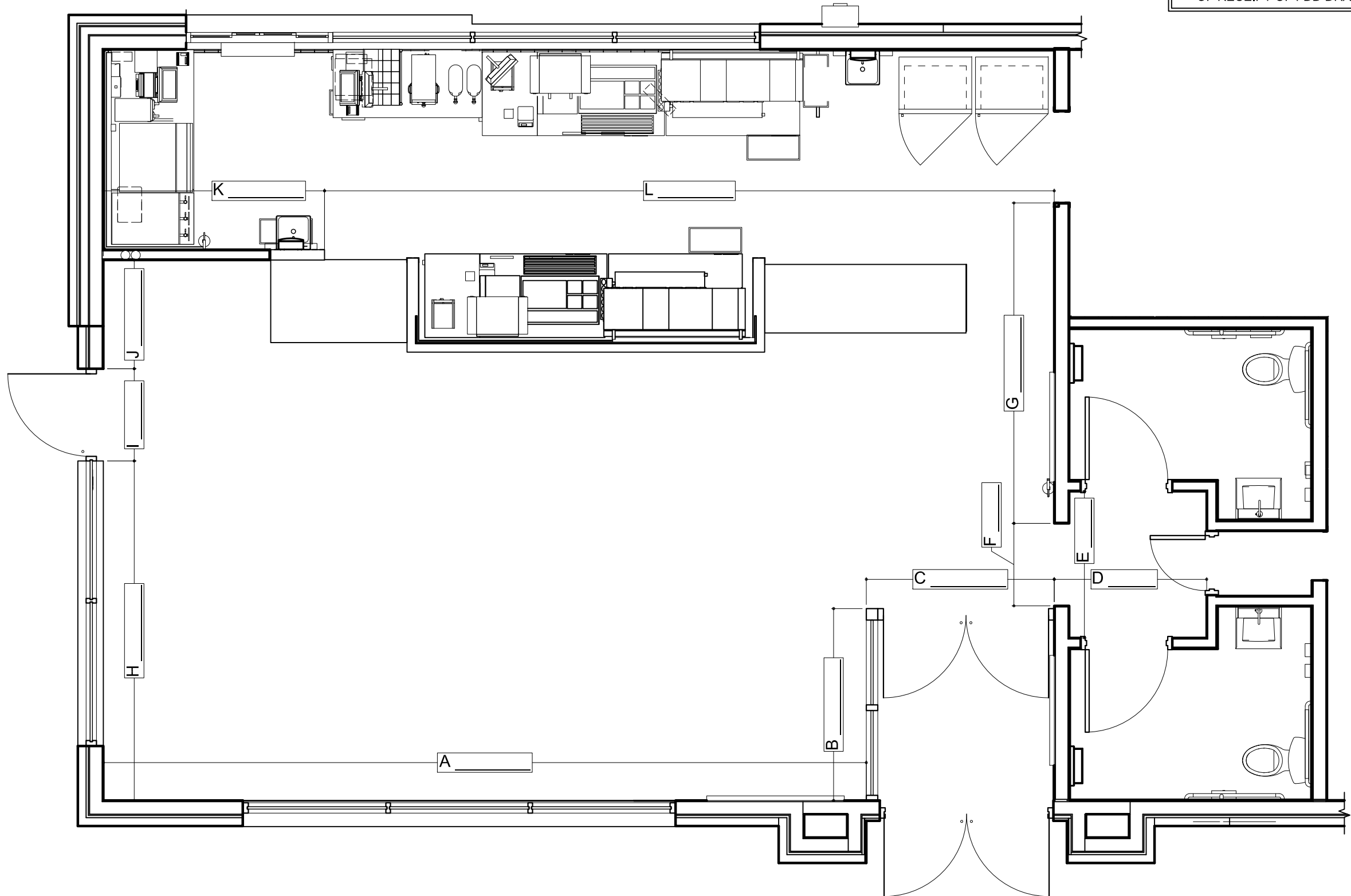
PROJECT INFORMATION

DRAWING TITLE:
 INSTALLATION DETAILS

DRAWING SCALE:
 NOT TO SCALE

PROJECT ID:
 33808

SHEET:



GENERAL CONTRACTOR MUST VERIFY ALL NOTED DIMENSIONS ON SITE AND RETURN COMPLETED DIMENSION VERIFICATION PAGE(S) TO IDX PROJECT MANAGER WITHIN 5 DAYS OF RECEIPT OF FDD DRAWINGS.

idx
 GLOBAL HEADQUARTERS
 One Rider Trail Plaza, Suite 400
 Earth City, MO 63045
 T 314.739.4120
 www.idxcorporation.com

CONFIDENTIAL:
 This drawing and the information herein are the exclusive property of idx Corporation. Any reproduction of use without express written consent is strictly forbidden.
 CA TITLE 17:
 All composite wood products (MDF, PB, HWPW) are compliant. Place compliance label as shown within drawing (or per current standard) and do not remove after installation.
DIMENSIONS:
 All dimensions are in inches unless noted otherwise - views are not to scale unless noted. Written dimensions take precedence over scale in all instances. Do not scale off drawings. Contact idx Corporation for confirmation of any questionable dimensions.

PROJECT MANAGER
 Dennis Caruana
 T 909.212.8375
ACCOUNT EXECUTIVE
 Gordon Bjorkman
 T 413.207.4098
idx CUSTOMER SERVICE
 Jonathan Dunn
 T 909.635.3541
 PLEASE CONTACT THE PARTIES LISTED ABOVE FOR ASSISTANCE WITH ANY CONCERNS OR QUESTIONS.

PROJECT CONTACTS

The General Contractor (GC) shall verify all dimensions and conditions at the job site and notify idx Corporation of any/all discrepancies prior to starting work.
 The GC is to review idx Corporation plans against the architectural drawing set being used on site. The GC shall notify idx Corporation immediately if there are discrepancies.
 The GC is to install table bases on accessible table tops per ADAAG guidelines or per local code, whichever is most stringent.

GC/INSTALL NOTES



PROJECT:
 TACO BELL TRANSFORMATION
 MODERN EXPLORER

LOCATION:
 19000 NORTHLINE ROAD
 SOUTHGATE, MI 48195

SET ISSUED DATE:
 10/18/18

DRAWN BY:
 RP

PROJECT INFORMATION

DRAWING TITLE:
 DIMENSION VERIFICATION PLAN

DRAWING SCALE:
 1/4" = 1'-0"

PROJECT ID:
 33808

SHEET:
 F9 OF F9