

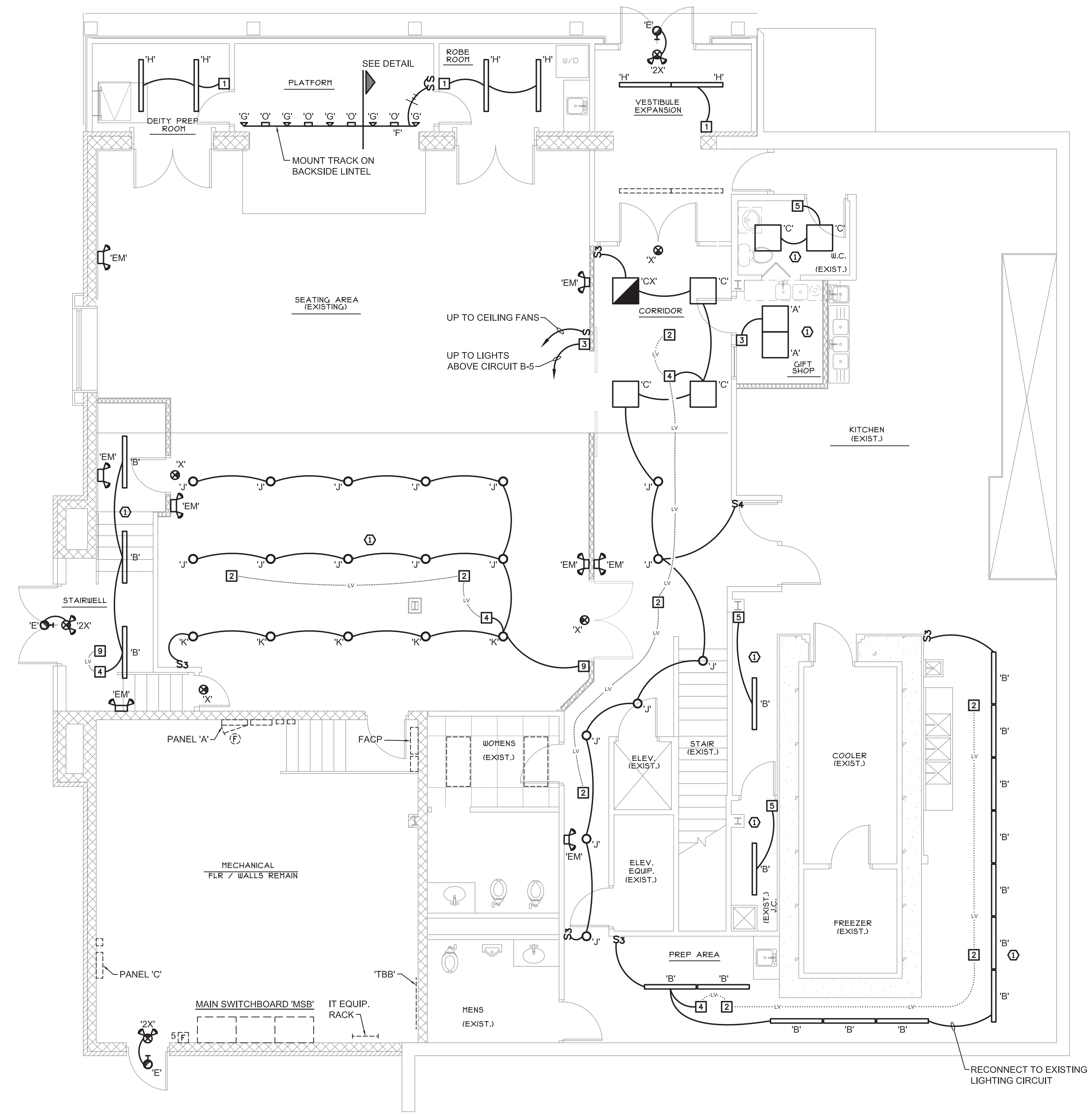
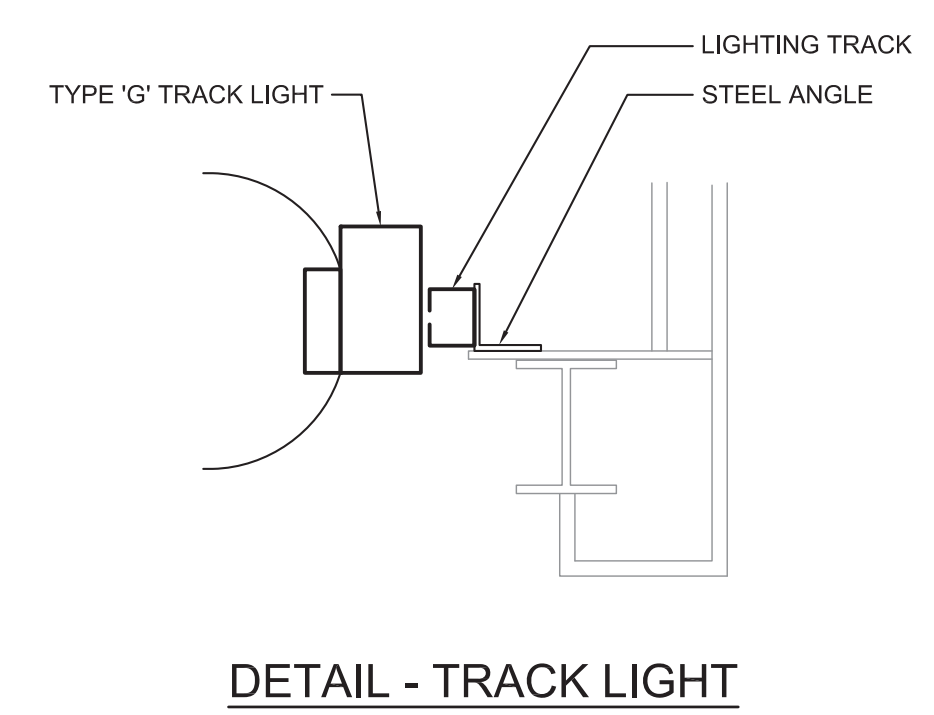
Lindhout Associates  
architects aia pc  
10465 citation drive, brighton, michigan 48116-9510  
www.lindhout.com (810)227-5668 fax: (810)227-5855



mechanical electrical engineering consultants  
145 Goshorn  
Plymouth, Michigan 48178  
P 734-454-8877 F 734-454-8877  
CONSTRUCTION SET  
PERMIT REVIEW  
issued for

NEW ADDITION AND REMODEL FOR:  
MICHIGAN BHAKTI CENTER  
FARYINGTON HILLS, MICHIGAN  
FIRST FLOOR PLAN - LIGHTING

E3.1  
1421



KEYED NOTES

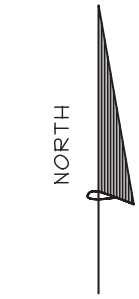
- ① CONNECT TO EXISTING LIGHTING CIRCUIT.

AUTOMATIC LIGHTING CONTROL LEGEND

- 1 PASSIVE / INFRARED OCCUPANCY SENSOR WITH 0-10V LED DIMMING CONTROL. ACUITY #WSX-EZ-D-WH
- 2 LOW VOLTAGE DUAL TECHNOLOGY OCCUPANCY SENSOR. ACUITY #CM PDT 9
- 3 PROGRAMMABLE TIMER SWITCH. GREEN GATE #TSW-MV
- 4 120/277VOLT RELAY / POWER PACK (MOUNT IN ACCESSIBLE CEILING) ACUITY #PP20
- 5 AUTOMATIC WALL SWITCH P.I.R. ACUITY #WSD
- 6 HALLWAY P.I.R. MOTION SENSOR. ACUITY #CM11
- 7 ON-OFF / RAISE-LOWER DIMMING SWITCH POD. ACUITY #SPDMRD-EZ-WH
- 8 LINE VOLTAGE DUAL TECHNOLOGY OCCUPANCY SENSOR. ACUITY #CMR PDT9
- 9 LINE VOLTAGE LED DIMMER. SYNERGY #1SD 600 I 120 WH/IV

NOTES:

- 1. SET TIME-DELAY OF EACH SENSOR TO 15 MINUTES.
- 2. PRODUCTS BY ALTERNATE MANUFACTURERS OF EQUAL QUALITY AND PERFORMANCE ARE ACCEPTABLE.
- 3. EQUIPMENT SHOWN SOLID IS NEW.
- 4. EQUIPMENT SHOWN DASHED IS EXISTING TO REMAIN.



THIS DRAWING IS DIAGRAMMATIC AND SHOULD BE USED TO DETERMINE THE DESIGN INTENT. THE CONTRACTOR SHALL FIELD VERIFY ALL WORK AND SHALL NOTIFY THE ARCHITECT IMMEDIATELY OF ANY DISCREPANCIES IN THE DOCUMENTS BEFORE PROCEEDING. FAILURE TO DO SO WILL RESULT IN THE CONTRACTOR TAKING FULL RESPONSIBILITY AND LIABILITY FOR SAID DISCREPANCIES. NOTICE: THIS DRAWING AND THE DESIGN ARE THE PROPERTY OF MECHANICAL, POWER ENGINEERING CONSULTANTS, P.C. AND NO ALTERATIONS AND/OR TRANSFER OF WORK ARE PERMITTED UNLESS WRITTEN APPROVAL IS GRANTED BY MECHANICAL POWER ENGINEERING CONSULTANTS, P.C.