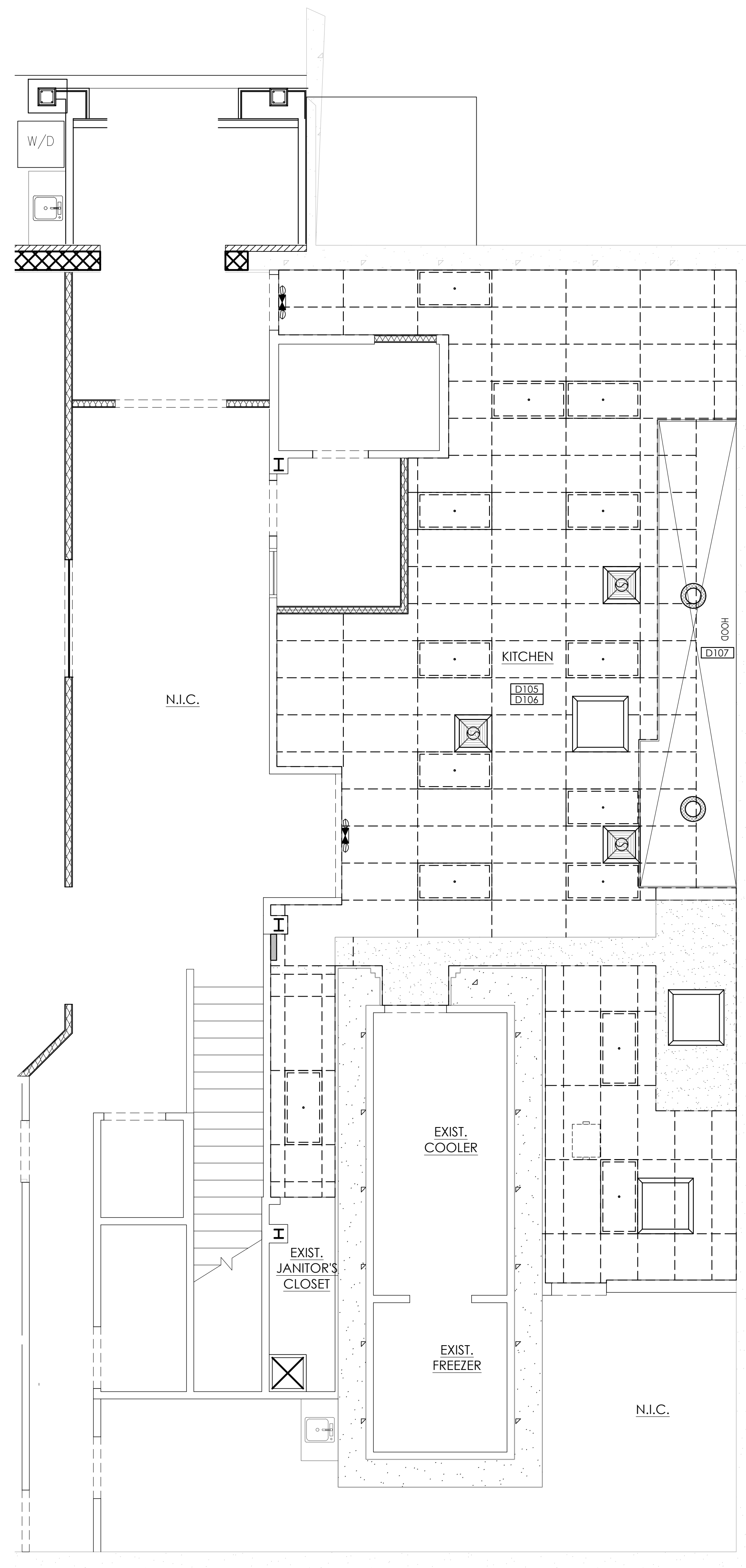


1 DEMO FLOOR PLAN
SCALE: 1/4" = 1'-0"



2 DEMO REFLECTED CEILING PLAN
SCALE: 1/4" = 1'-0"

WALL TYPE/GRAPHIC LEGEND	
	EXISTING WALL TO REMAIN
	DEMO

- GENERAL NOTES**
- G.C. TO PREPARE SLAB FOR NEW FINISHES. PATCH AND REPAIR ANY DAMAGE CAUSED BY REMOVAL OF PRE-EXISTING CONSTRUCTION.
 - G.C. TO PATCH AND REPAIR EXISTING WALLS AS NEEDED FOR NEW FINISHES.

SCOPE OF PROPOSED WORK	
I. KITCHEN	
D100	DEMO FLOOR TILE AND BASE. PATCH AREAS AS NECESSARY FROM DEMOLITION PROCESS.
D101	REMOVE EXISTING EQUIPMENT AND TO EXCLUDE HAND SINKS, PREP SINK & SCULLERY.
D102	REMOVE EQUIPMENT AND RETAIN, TO BE REINSTALLED.
D103	DEMO FRP ON WALLS.
D104	TRENCH FLOOR AS NECESSARY FOR NEW PLUMBING AND ELECTRICAL. SEE P-1 AND E-1 DRAWINGS.
D105	DEMO CEILING TILES, GRID AND LIGHT FIXTURES.
D106	DEMO HVAC SUPPLY REGISTERS.
D107	EXISTING HOOD TO REMAIN.

No.	1	Date	2.2.18	By	DEB	Notes	SUBMITTED FOR PERMITTING
Drawn By: DEB							
Checked: SB							
Scale: AS NOTED							
Date: 1.30.18							

ALL RIGHTS RESERVED. NO PART OF THESE DRAWINGS OR SPECIFICATIONS MAY BE COPIED, REPRODUCED OR USED IN CONNECTION WITH ANY WORK, OTHER THAN THE SPECIFIC PROJECT FOR WHICH THEY HAVE BEEN PREPARED, WITHOUT PRIOR WRITTEN AUTHORIZATION FROM THE ARCHITECT.

GOVINDA
36600 GRAND RIVER AVE.
FARMINGTON HILLS, MI 48335

TECHNICAL GROUP, INC.
Farmington Hills, MI 48331
(248) 426-8000
FAX (248) 426-7004

PROJECT
GOVINDAS
36600 GRAND RIVER AVE.
FARMINGTON HILLS, MI 48335

SHEET TITLE
DEMOLITION FLOOR
PLAN/REFLECTED CEILING

DO NOT SCALE THIS PRINT. USE FIGURED DIMENSIONS ONLY.

JOB #
TG-18502

SHEET
D-1