

4.13.2017 Jakiya Mixon C:\Vault Workspace\Project Files1 - Projects\Burger King\Lansing, MI (7416 W Saginaw) BK#6183\Lansing, MI #161314\Design\Lansing, MI #161314 BK#6183 IMPROVED.dwg



P: 770.423.9575 F: 770.423.9402  
811 PICKENS INDUSTRIAL DR MARIETTA, GA 30062

# BURGER KING RESTAURANT

## LANSING, MI

04.20.17  
BRAND REVIEW  
APPROVED

7416 W SAGINAW

NATIONAL STORE #: BK6183

CDG JOB #: 161314

STORE TYPE: REMODEL

PACKAGE: 20/20 LO2 IMPROVED

ACCOUNT MANAGER: JOHN HARRISON (770) 337-0931

DESIGNER OF RECORD: EHW/JRM

**PRE-CONSTRUCTION DRAWINGS**  
PLANS ARE PRODUCED FROM ARCHITECTURAL DRAWINGS  
RECEIVED: 04.10.2017

**DISCLOSURE OF COMPENSATION FOR PROFESSIONAL SERVICE:**  
INTERIOR DESIGN DOCUMENTS WHICH ARE PREPARED BY A REGISTERED INTERIOR DESIGNER SHALL CONTAIN A STATEMENT THAT THESE DOCUMENTS ARE NOT AN ARCHITECTURAL OR ENGINEERING STUDY, DRAWING, SPECIFICATION, OR DESIGN AND ARE NOT TO BE USED FOR CONSTRUCTION OF ANY LOAD BEARING COLUMNS, LOAD BEARING FRAMING OR WALLS OF STRUCTURES, OR ISSUANCE OF ANY BUILDING PERMIT, EXCEPT AS OTHERWISE PROVIDED BY LAW.

ALL IDEAS, DESIGNS, ARRANGEMENTS AND PLANS INDICATED OR REPRESENTED BY THIS DRAWING ARE OWNED BY, AND THE PROPERTY OF CASABLANCA DESIGN GROUP AND WERE CREATED, EVOLVED AND DEVELOPED FOR USE ON, AND IN CONNECTION WITH THE SPECIFIED PROJECT. NONE OF SUCH IDEAS, DESIGNS, ARRANGEMENTS OR PLANS SHALL BE USED BY OR DISCLOSED TO ANY PERSON, FIRM OR CORPORATION FOR ANY PURPOSE WHATSOEVER WITHOUT THE WRITTEN PERMISSION OF C.D.G. WRITTEN DIMENSIONS ON THESE DWG'S. SHALL TAKE PRECEDENCE OVER SCALED DIMENSIONS. CONTRACTORS SHALL VERIFY AND BE RESPONSIBLE FOR ALL DIMENSIONS AND CONDITIONS ON THE JOB AND THIS OFFICE MUST BE NOTIFIED OF ANY VARIATIONS FROM THE DIMENSIONS AND CONDITIONS SHOWN BY THESE DRAWINGS.

TABLE OF CONTENTS	
ID-01	COVER SHEET
ID-02	GENERAL NOTES
ID-03	FLOOR PLAN
ID-04	FINISH PLAN
ID-05	PARTITION PLAN (FORTHCOMING)
ID-06	CORE-DRILL PLAN
ID-07	CORE-DRILL DETAILS (FORTHCOMING)
ID-08	ELECTRICAL PLAN
ID-09	REFLECTED CEILING PLAN
ID-10	CEILING SCHEDULES & DETAILS
ID-11	ELEVATIONS
ID-12	ELEVATIONS
ID-13	ELEVATIONS
ID-14	FURNITURE DETAILS
ID-15	FURNITURE DETAILS
ID-16	WAYFINDING GRAPHICS
ID-17	FURNITURE SCHEDULE
ID-18	DECOR SCHEDULE
ID-19	BUILDING FINISH SCHEDULE
ID-20	BUILDING FINISH SCHEDULE
ID-21	BUILDING FINISH SCHEDULE

FINISHES SHALL COMPLY WITH 2020 LIGHT  
FINISH SCHEDULE AND GUIDELINE AND  
CANNOT DEVIATE FROM THE IMAGE

**PERMIT PLANS**

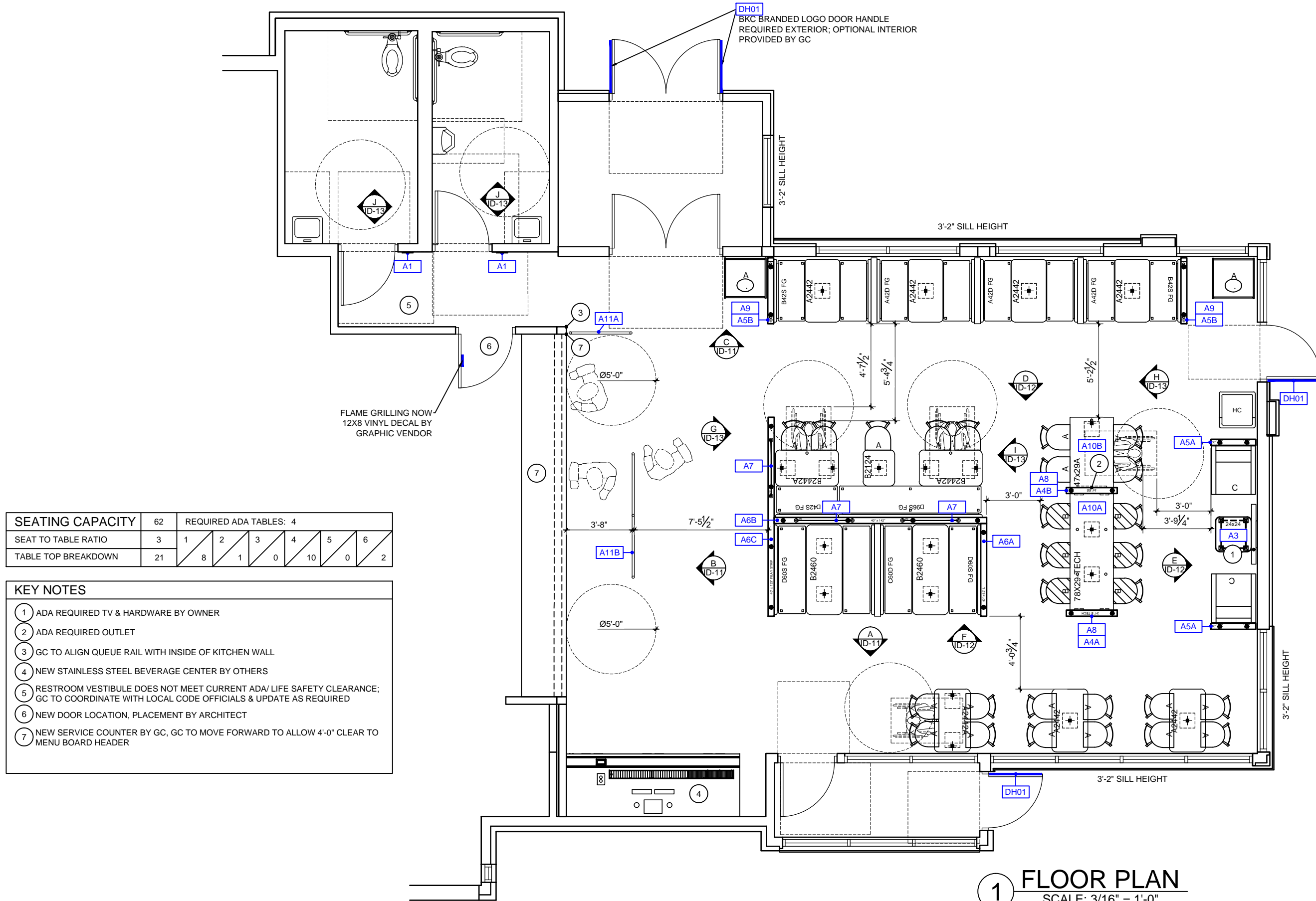


P: 770.423.9575 F: 770.423.9402  
811 PICKENS INDUSTRIAL DR MARIETTA, GA 30062

DATE	ISSUE / REVISION / DESCRIPTION
02.24.17	SNS- PRELIM PARTIAL DRAWINGS RELEASED

**Burger King Restaurant**  
LANSING, MI 161314: BK#6183:  
20/20 LO2 IMPROVED  
7416 W SAGINAW  
EHW/JRM

SHEET TITLE  
COVER SHEET  
SHEET  
**ID-01**



SEATING CAPACITY	62	REQUIRED ADA TABLES: 4					
SEAT TO TABLE RATIO	3	1	2	3	4	5	6
TABLE TOP BREAKDOWN	21	8	1	0	10	0	2

- KEY NOTES**
- ADA REQUIRED TV & HARDWARE BY OWNER
  - ADA REQUIRED OUTLET
  - GC TO ALIGN QUEUE RAIL WITH INSIDE OF KITCHEN WALL
  - NEW STAINLESS STEEL BEVERAGE CENTER BY OTHERS
  - RESTROOM VESTIBULE DOES NOT MEET CURRENT ADA/ LIFE SAFETY CLEARANCE; GC TO COORDINATE WITH LOCAL CODE OFFICIALS & UPDATE AS REQUIRED
  - NEW DOOR LOCATION, PLACEMENT BY ARCHITECT
  - NEW SERVICE COUNTER BY GC, GC TO MOVE FORWARD TO ALLOW 4'-0" CLEAR TO MENU BOARD HEADER

FLAME GRILLING NOW  
12X8 VINYL DECAL BY  
GRAPHIC VENDOR

DH01  
BKC BRANDED LOGO DOOR HANDLE  
REQUIRED EXTERIOR; OPTIONAL INTERIOR  
PROVIDED BY GC

**1 FLOOR PLAN**  
SCALE: 3/16" = 1'-0"

DATE	ISSUE / REVISION / DESCRIPTION
02.24.17	SNS- PRELIM PARTIAL DRAWINGS RELEASED

**Burger King Restaurant**  
LANSING, MI 161314: BK#6183:  
20/20 LO2 IMPROVED  
7416 W SAGINAW  
EHW/JRM

SHEET TITLE  
**FLOOR PLAN**

SHEET  
**ID-03**

4.13.2017 Jakiya Mixon C:\Vault Workspace\Project Files1 - Projects\Burger King\Lansing, MI (7416 W Saginaw) BK#6183\Lansing, MI #161314 Design\Lansing, MI #161314 BK#6183 IMPROVED.dwg

**GRAPHIC / SIGNAGE VENDERS  
PURCHASED & INSTALLED  
BY GC**

MOSS / RETAIL & ENVIRONMENTS  
2643 WEST CHICAGO AVE.  
CHICAGO, IL 60622-4519

ROB LORTS - 773.435.7600 EXT. 655  
rlorts@mossinc.com  
DJ SCANDIFF - 773.435.7600 EXT. 617  
djscandiff@mossinc.com

VISUAL GRAPHIC SYSTEMS, INC.  
300 WASHINGTON AVE  
CARLSTADT, NJ 07072

GREG MOROZ - 330.268.7587  
burgerking@vgs-inc.com  
Fax: 201.528.0890  
Phone: 1.800.203.0301  
www.vgsonline.com  
(NO VERBAL PHONE ORDER ACCEPTED)

**FLOOR FINISH KEY**

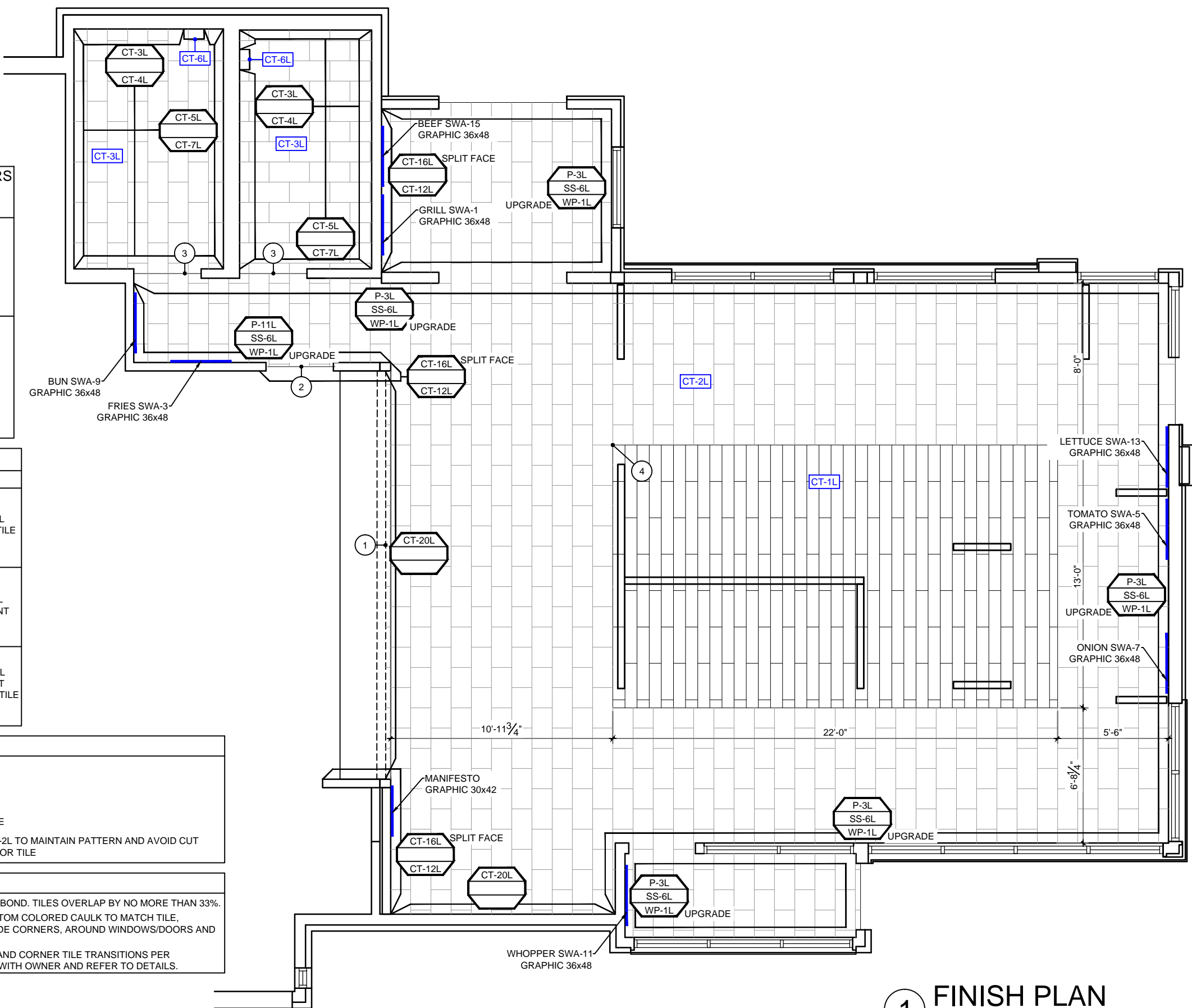
SYMBOL	TAG
	CT-2L FIELD TILE
	CT-1L ACCENT TILE
	CT-3L REST ROOM TILE

**KEY NOTES**

- 1 TILE TO CONTINUE TO KNEE WALL
- 2 TRANSITION TO KITCHEN TILE HERE
- 3 TRANSITION TO RESTROOM TILE HERE
- 4 FIRST TILE LOCATION FOR CT-1L & CT-2L TO MAINTAIN PATTERN AND AVOID CUT TILES AT PERIMETER OF ACCENT FLOOR TILE

**GENERAL NOTES**

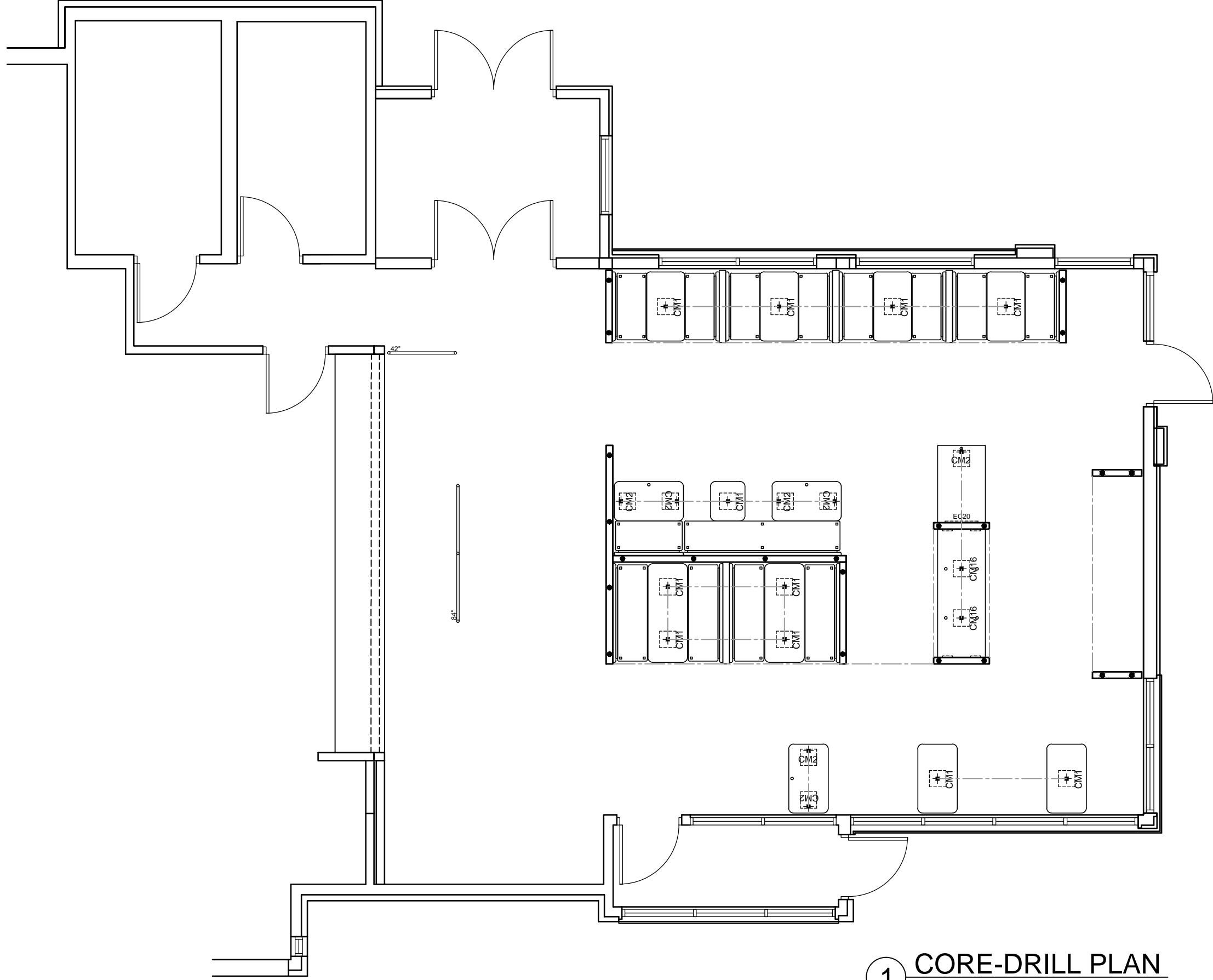
- 1. CT-1L & CT-2L PATTERNS ARE RUNNING BOND. TILES OVERLAP BY NO MORE THAN 33%.
- 2. GC TO INSTALL CUSTOME GROUT'S CUSTOM COLORED CAULK TO MATCH TILE, SANDED FINISH, AT ALL INSIDE AND OUTSIDE CORNERS, AROUND WINDOWS/DOORS AND TO TRANSITION BETWEEN FINISHES.
- 3. GC TO INSTALL SCHULTER COVE BASE AND CORNER TILE TRANSITIONS PER OWNER'S REQUEST - GC TO COORDINATE WITH OWNER AND REFER TO DETAILS.



**1 FINISH PLAN**  
SCALE: 3/16" = 1'-0"

DATE	ISSUE / REVISION / DESCRIPTION
02.24.17	SNS- PRELIM PARTIAL DRAWINGS RELEASED

**Burger King Restaurant**  
LANSING, MI 161314: BK#6183:  
20/20 LO2 IMPROVED  
7416 W SAGINAW  
EHW/JRM



**1** CORE-DRILL PLAN  
SCALE: 3/16" = 1'-0"

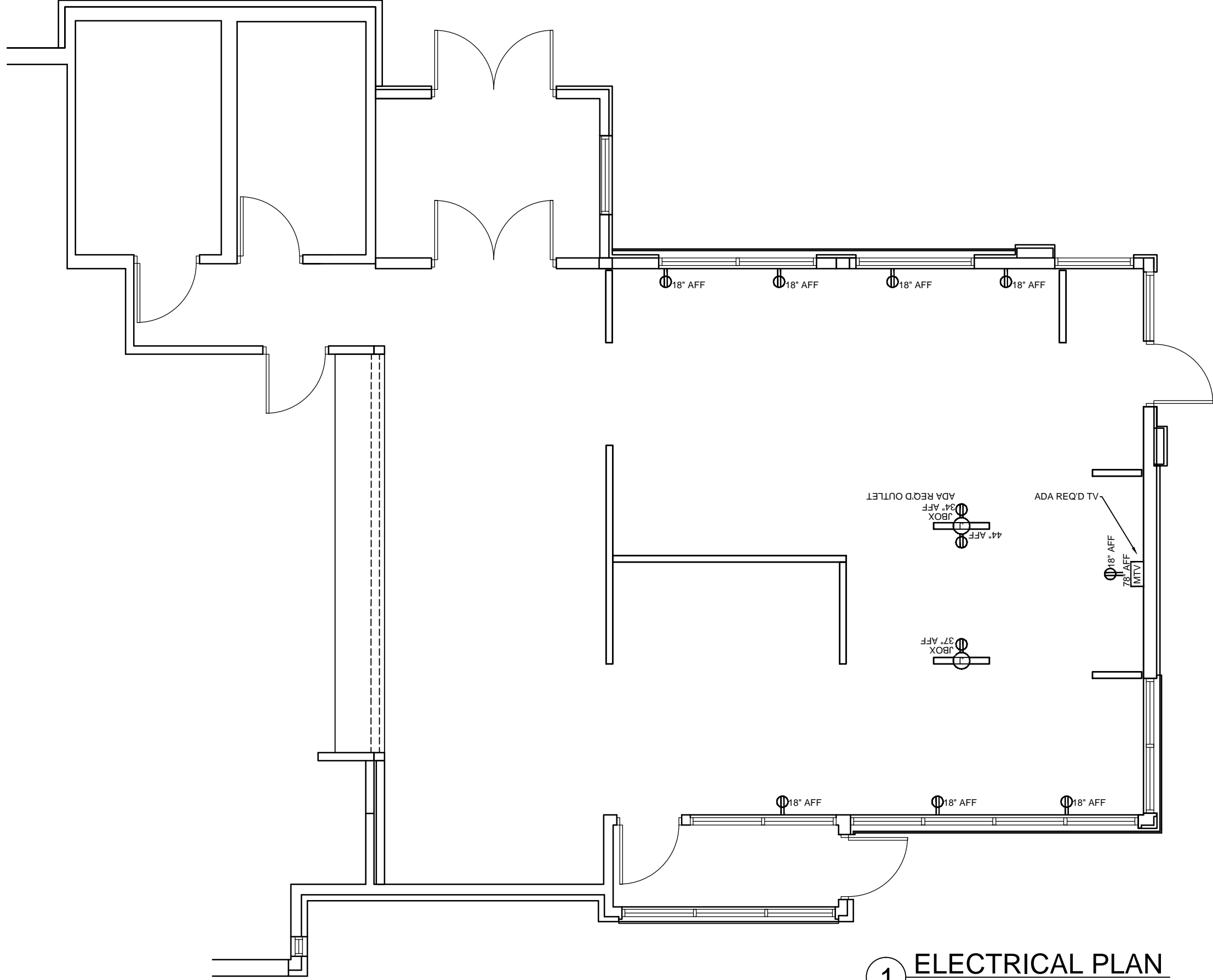
**NOTE: FOR CORE-DRILL COUNTS ONLY, DIMENSIONS ARE FORTHCOMING**

**Burger King Restaurant**  
LANSING, MI 161314: BK#6183:  
20/20 LO2 IMPROVED  
7416 W SAGINAW  
EHW/JRM

SHEET TITLE  
CORE-DRILL  
PLAN

SHEET  
**ID-06**

DATE	ISSUE / REVISION / DESCRIPTION
02.24.17	SNS- PRELIM PARTIAL DRAWINGS RELEASED

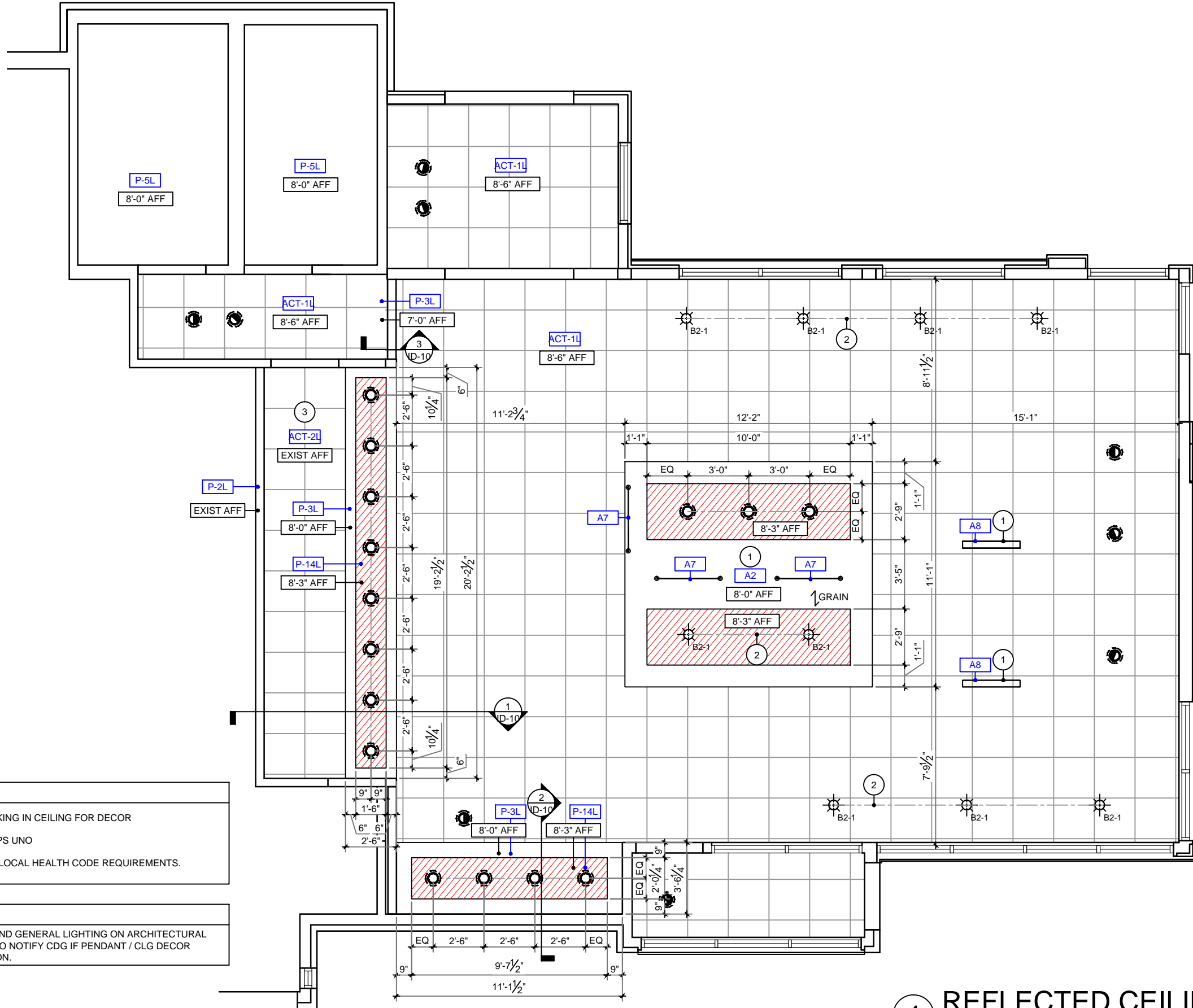


**1** ELECTRICAL PLAN  
SCALE: 3/16" = 1'-0"

**NOTE: FOR ELECTRICAL COUNTS ONLY, DIMENSIONS ARE FORTHCOMING**

<p><b>Burger King Restaurant</b> LANSING, MI 161314: BK#6183: 20/20 LO2 IMPROVED 7416 W SAGINAW EHW/JRM</p>		<p>DATE</p> <p>02.24.17</p>	<p>ISSUE / REVISION / DESCRIPTION</p> <p>SNS- PRELIM PARTIAL DRAWINGS RELEASED</p>
<p>SHEET TITLE</p> <p>ELECTRICAL PLAN</p>			
<p>SHEET</p> <p><b>ID-08</b></p>			

4.13.2017 Jakiya Mixon C:\Vault Workspace\Project Files1 - Projects\Burger King\Lansing, MI (7416 W Saginaw) BK#6183\Lansing, MI #161314\Design\Lansing, MI #161314 BK#6183 IMPROVED.dwg



**KEY NOTES**

- GC TO PROVIDE EXTRA WOOD BLOCKING IN CEILING FOR DECOR
- CENTER PENDANTS OVER TABLE TOPS UNO
- GC TO ENSURE CEILING TILE MEETS LOCAL HEALTH CODE REQUIREMENTS.

**GENERAL NOTES**

- GC TO COORDINATE HVAC DIFFUSERS AND GENERAL LIGHTING ON ARCHITECTURAL DWGS WITH LIGHTING PLAN SHOWN. GC TO NOTIFY CDG IF PENDANT / CLG DECOR LOCATIONS INTERFERE WITH INSTALLATION.

**1 REFLECTED CEILING PLAN**  
SCALE: 3/16" = 1'-0"

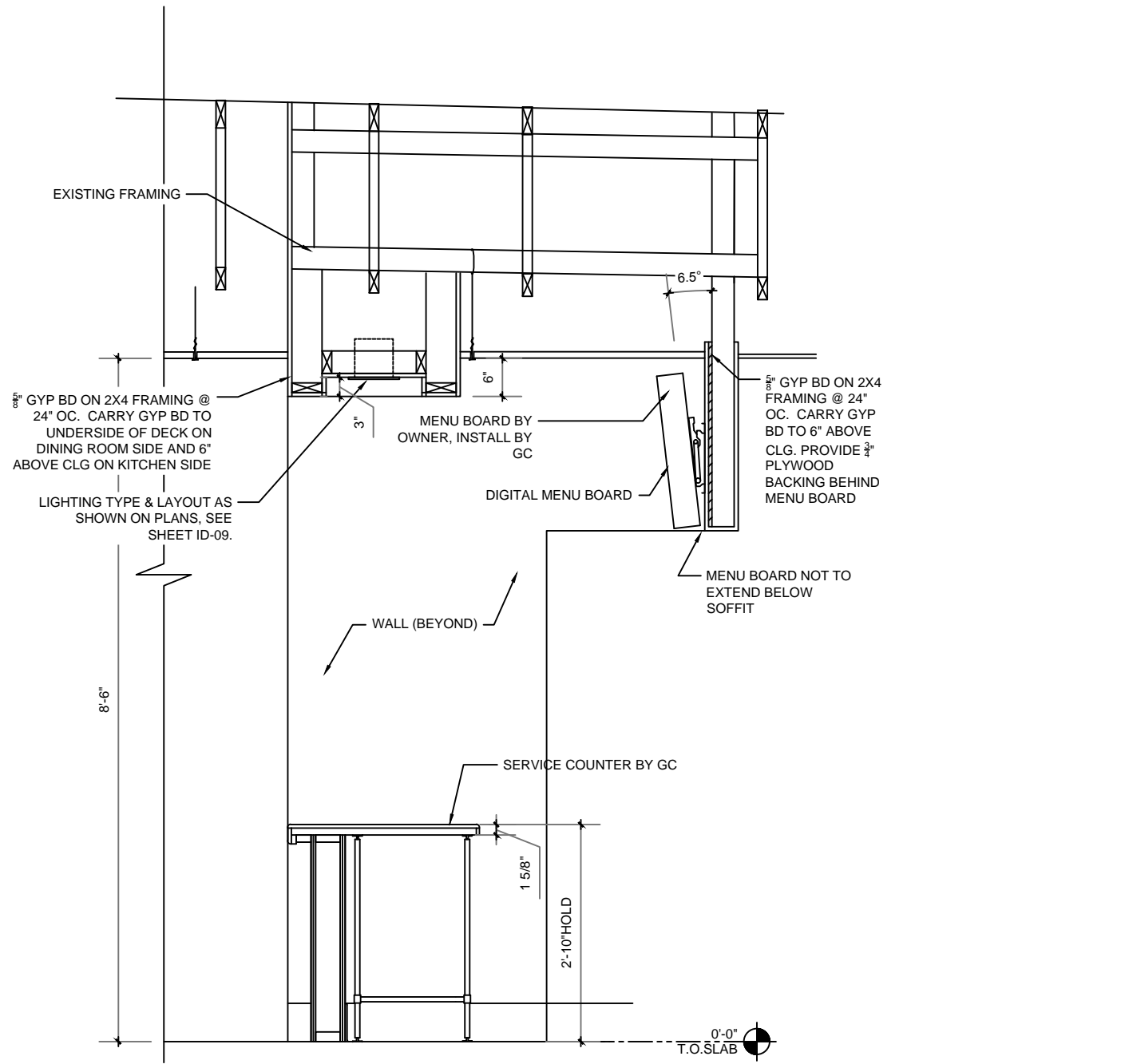
DATE	ISSUE / REVISION / DESCRIPTION
02.24.17	SNS- PRELIM PARTIAL DRAWINGS RELEASED

**Burger King Restaurant**  
LANSING, MI 161314: BK#6183:  
20/20 LO2 IMPROVED  
7416 W SAGINAW  
EHW/JRM

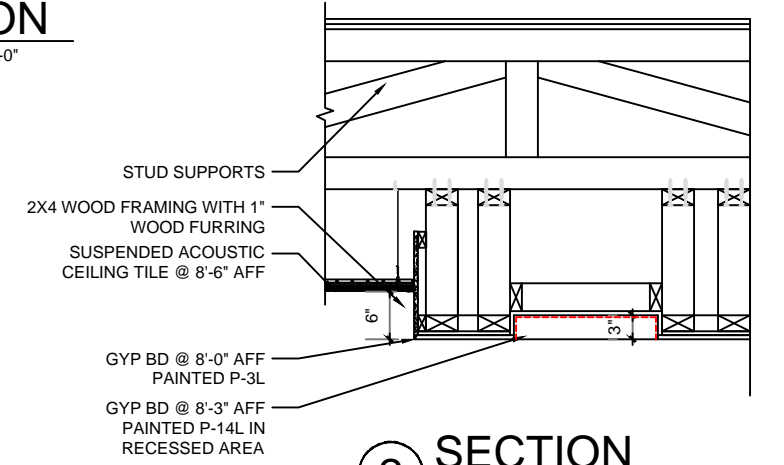
SHEET TITLE  
**REFLECTED CEILING PLAN**

SHEET  
**ID-09**





**1 SECTION**  
SCALE: 1/2" = 1'-0"



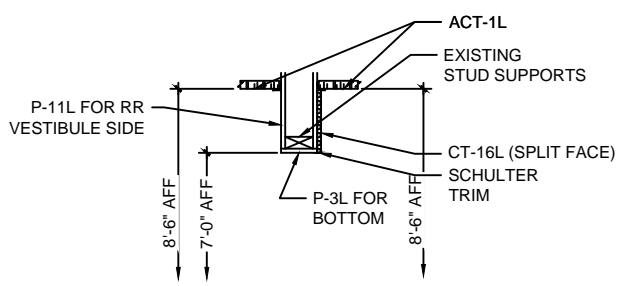
**2 SECTION**  
SCALE: 1/2" = 1'-0"

**CEILING FINISH SCHEDULE** ALL ITEMS SUPPLIED & INSTALLED BY GC, UNO

SYMBOL	DESCRIPTIONS/ PART #	HVAC, DIFFUSERS, & SPEAKER COVERS	COMMENTS
ACT-1L	24"X24" CEILING TILE, SEE ID-19 FOR SPECIFICATIONS	N/A	MAIN LOBBY & RR VESTIBULE CEILING TILE & GRID
ACT-2L	24"X24" CEILING TILE, SEE ID-19 FOR SPECIFICATIONS	N/A	KITCHEN AREA CEILING TILE & GRID
P-2L	EGGSHELL PAINT, SEE ID-21 FOR SPECIFICATIONS	N/A	PAINT FINISH FOR MENUBOARD BULKHEAD
P-3L	EGGSHELL PAINT, SEE ID-21 FOR SPECIFICATIONS	N/A	PAINT FINISH FOR SOFFIT OVER SERVICE COUNTER, DRINK STATION & RR VESTIBULE BULKHEAD
P-5L	SEMI-GLOSS PAINT, SEE ID-21 FOR SPECIFICATIONS	P-5L	PAINT FINISH FOR RESTROOM GYP BD CEILINGS
P-14L	EGGSHELL PAINT, SEE ID-21 FOR SPECIFICATIONS	N/A	ACCENT PAINT AT SOFFIT OVER SERVICE COUNTER & DRINK STATION

**ELECTRICAL / LIGHTING SCHEDULE** ALL ITEMS SUPPLIED & INSTALLED BY GC, UNO

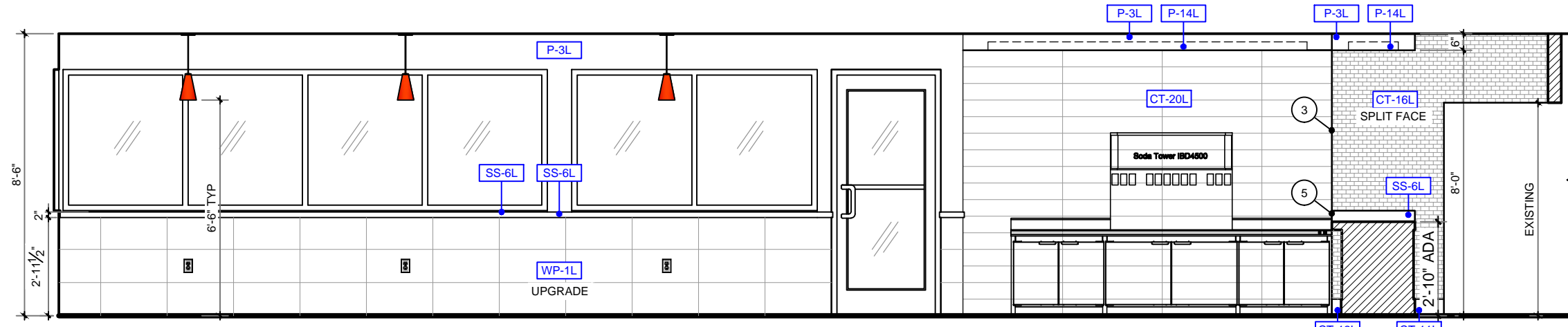
SYMBOL	QTY	CONTACT	DESCRIPTIONS/ PART #	COMMENTS
☉	15	LSI INDUSTRIES INC. RON LARIMORE 1-800-436-7800 X-3375	6" RECESSED LIGHT FIXTURE PDL6K LED HO WW 120 SD, 14 WATT, 3000K	LOCATED OVER DRINK STATION & IN SOFFITS
		SECURITY LIGHTING ERIC HILLESLAND 630-636-8493	6" RECESSED LIGHT FIXTURE SL5DBXQL/LB6LEDA30K WH; 14 WATT; 3000K	
		CREE / HERMITAGE WYATT CULVER 615-843-3379 STEVE FRIEDMAN 262-504-5479	6" RECESSED LIGHT FIXTURE LRS-10L-30K-120-A-DR W/ RC6-12W-GU24; 11 WATT; 3000K	
☉	9	CREE / HERMITAGE WYATT CULVER 615-843-3379 STEVE FRIEDMAN 262-504-5479	6" ADJUSTABLE RECESSED WALL WASHER LIGHT FIXTURE E.RIN6AT W/ E.T6730WH	LOCATED AT WALL GRAPHICS
☉ B2-1	9	LSI INDUSTRIES INC. RON LARIMORE 1-800-436-7800 X-3375	BESA CIERRO TYPE P4 "RUBY MATTE" (1 PENDANT FIXTURE) 1JT-4124RM-SN-LAMP; GU-24	PENDANT TO BE CENTERED OVER TABLE TOPS WITH BOTTOM OF FIXTURE @ 6'-6" AFF PENDANT INCLUDES: (1) 3", (1) 6", (1) 12", (1) 18" STEM LENGTHS- IF MORE LENGTH IS REQUIRED ADDITIONAL STEM KITS MUST BE PURCHASED
		SECURITY LIGHTING ERIC HILLESLAND 630-636-8493	BESA CIERRO TYPE P4 "RUBY MATTE" (1 PENDANT FIXTURE) 1JT-4124RM-SN-LAMP; GU-24	
		CREE / HERMITAGE WYATT CULVER 615-843-3379 STEVE FRIEDMAN 262-504-5479	BESA CIERRO TYPE P4 "RUBY MATTE" (1 PENDANT FIXTURE) 1JT-4124RM-SN-LAMP; GU-24	
☉ B2-2	ALT FOR ABOVE IF OUT OF STOCK	TREND LIGHTING JULIE SCHNEIDEWIND 626-506-6973	BKP-003 W BULB LED	PENDANT TO BE CENTERED OVER TABLE TOPS WITH BOTTOM OF FIXTURE @ 6'-6" AFF PENDANT INCLUDES: 80" OF HEIGHT
⚡ AFF	11		DUPLEX RECEPTACLE OUTLET	GC TO PROVIDE STAINLESS STEEL COVER PLATE
J	2		JBOX	GC TO HARDWIRE JBOX ABOVE CEILING
MTV 78" AFF	1			CCTV COAXIAL CABLE/ POWER



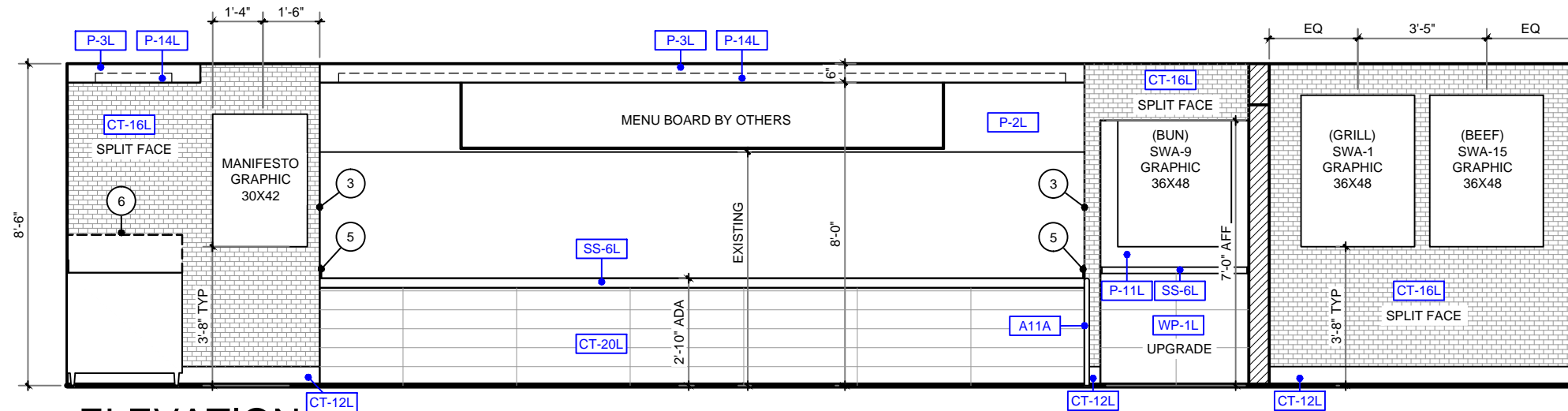
**3 SECTION**  
SCALE: 1/2" = 1'-0"

DATE	ISSUE / REVISION / DESCRIPTION
02.24.17	SNS- PRELIM PARTIAL DRAWINGS RELEASED

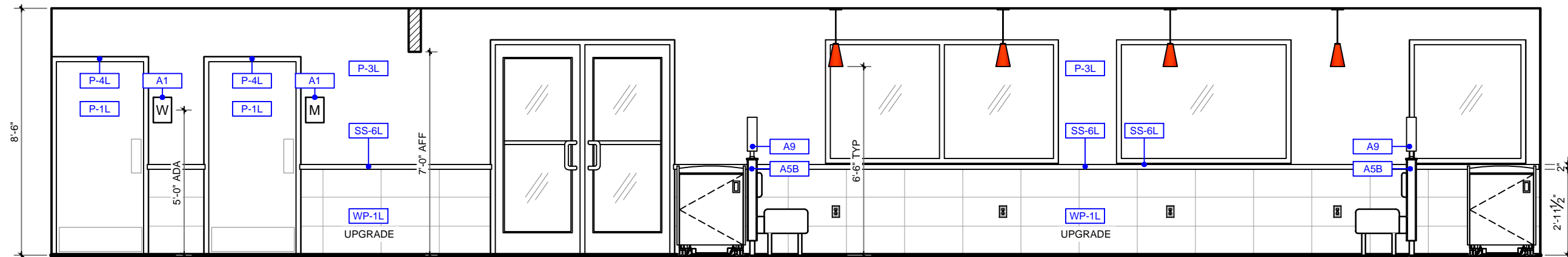
**Burger King Restaurant**  
LANSING, MI 161314: BK#6183:  
20/20 LO2 IMPROVED  
7416 W SAGINAW  
EHW/JRM



**A** ELEVATION  
SCALE: 1/4" = 1'-0"



**B** ELEVATION  
SCALE: 1/4" = 1'-0"



**C** ELEVATION  
SCALE: 1/4" = 1'-0"

**KEY NOTES**

- 1 GC TO PROVIDE EXTRA WOOD BLOCKING IN CEILING FOR DECOR
- 2 GC TO PROVIDE POWER FOR DECOR FROM CEILING OR ADJACENT WALL
- 3 GC TO WRAP FINISHES BACK
- 4 ADA REQ'D TV & HARDWARE BY OWNER
- 5 GC TO PROVIDE SIDE SPLASH; MOUNT FLUSH TO WALL
- 6 GC TO PROVIDE SCHULTER TRANSITION B/T FINISHES, COORDINATE WITH OWNER
- 7 ADA REQ'D OUTLET
- 8 BRANDED WOOD DOOR HANDLES WITH METAL BRACKETS REQUIRED FOR EXTERIOR USE; INTERIOR SIDE OPTIONAL BY GC ; GC TO COORD W/ OWNER

**GENERAL NOTES**

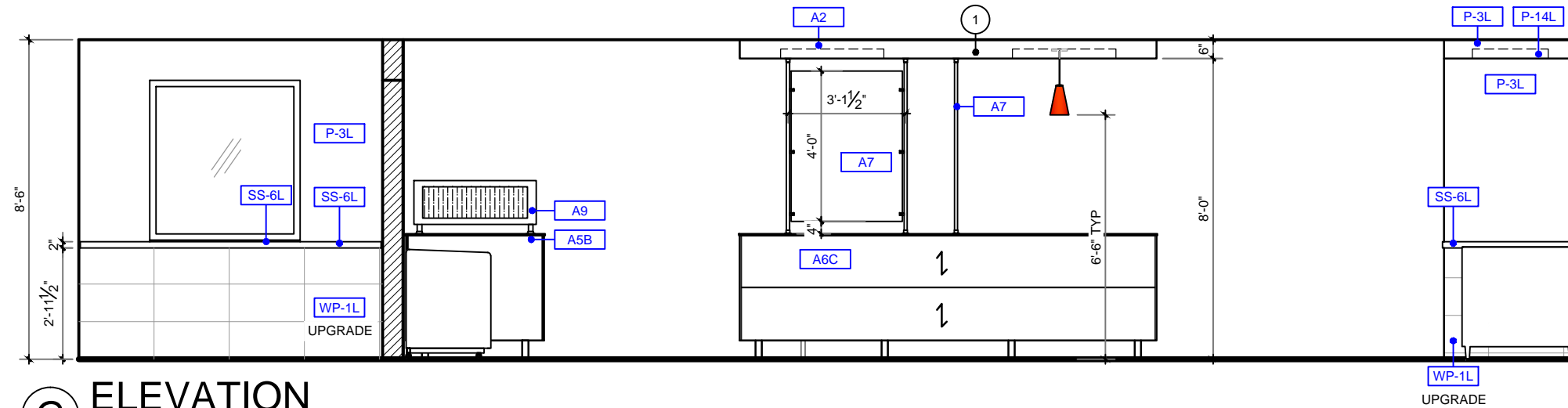
1. TILE PATTERNS ARE SHOWN ON ELEVATIONS FOR REPRESENTATION OF INSTALLATION PATTERN ONLY; DO NOT SCALE
2. PREFERRED GROUT JOINT WIDTH FOR WALL TILE IS 3/8"
3. CEILING HEIGHTS ARE SHOWN ON ARCHITECTURAL PLANS
4. GRAPHICS ARE CENTERED HORIZONTALLY ON WALLS, UNO

DATE	ISSUE / REVISION / DESCRIPTION
02.24.17	SNS- PRELIM PARTIAL DRAWINGS RELEASED

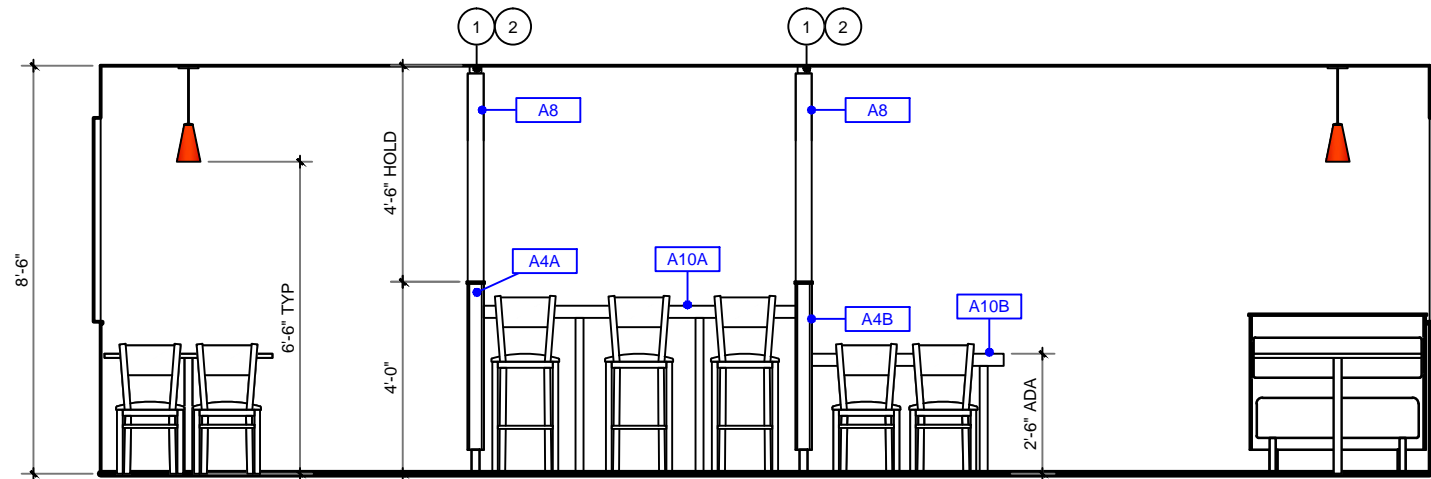
**Burger King Restaurant**  
LANSING, MI 161314: BK#6183:  
20/20 LO2 IMPROVED  
7416 W SAGINAW  
EHW/JRM



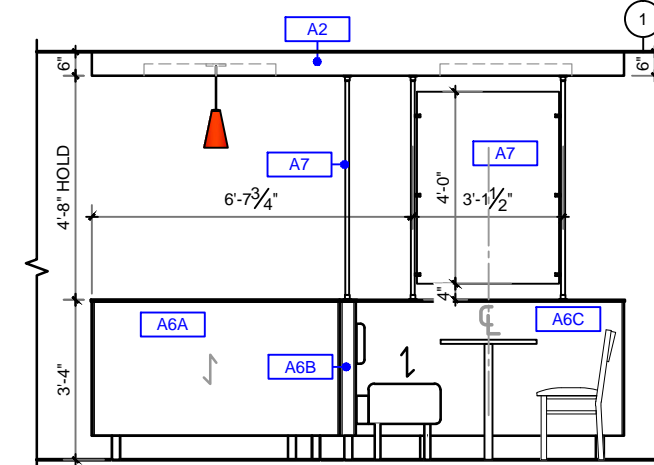




**G** ELEVATION  
SCALE: 1/4" = 1'-0"



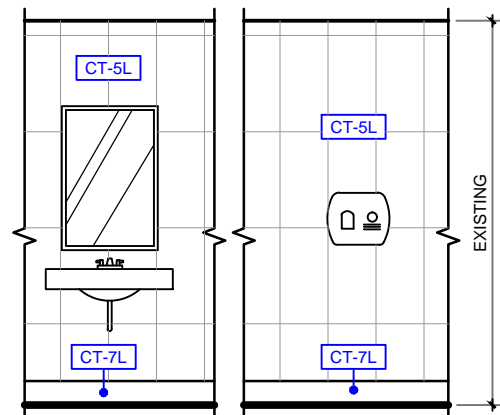
**H** ELEVATION  
SCALE: 1/4" = 1'-0"



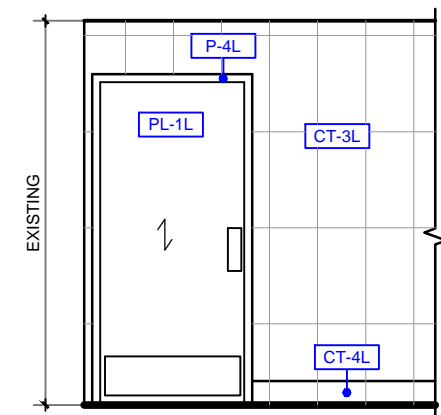
**I** ELEVATION  
SCALE: 1/4" = 1'-0"

- KEY NOTES**
- GC TO PROVIDE EXTRA WOOD BLOCKING IN CEILING FOR DECOR
  - GC TO PROVIDE POWER FOR DECOR FROM CEILING OR ADJACENT WALL
  - GC TO WRAP FINISHES BACK
  - ADA REQ'D TV & HARDWARE BY OWNER
  - GC TO PROVIDE SIDE SPLASH; MOUNT FLUSH TO WALL
  - GC TO PROVIDE SCHULTER TRANSITION B/T FINISHES, COORDINATE WITH OWNER
  - ADA REQ'D OUTLET
  - BRANDED WOOD DOOR HANDLES WITH METAL BRACKETS REQUIRED FOR EXTERIOR USE; INTERIOR SIDE OPTIONAL BY GC ; GC TO COORD W/ OWNER

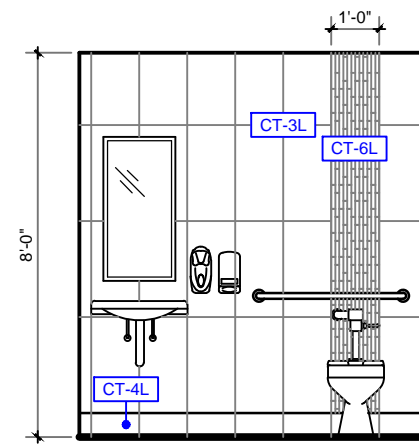
- GENERAL NOTES**
- TILE PATTERNS ARE SHOWN ON ELEVATIONS FOR REPRESENTATION OF INSTALLATION PATTERN ONLY; DO NOT SCALE
  - PREFERRED GROUT JOINT WIDTH FOR WALL TILE IS 3/8"
  - CEILING HEIGHTS ARE SHOWN ON ARCHITECTURAL PLANS
  - GRAPHICS ARE CENTERED HORIZONTALLY ON WALLS, UNO



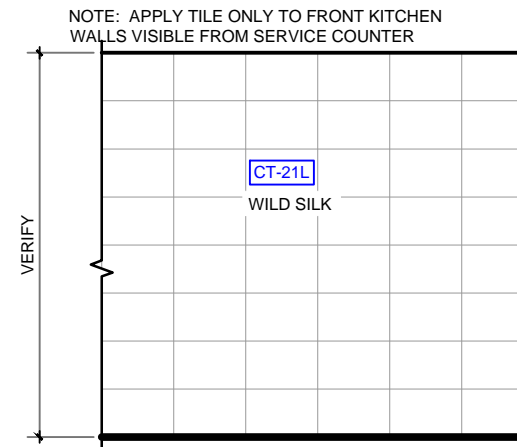
**J** TYP. ELEVATION  
SCALE: 1/4" = 1'-0"



**J** TYP. ELEVATION  
SCALE: 1/4" = 1'-0"



**J** TYP. ELEVATION  
SCALE: 1/4" = 1'-0"



**K** TYP. FRONT KITCHEN ELEV  
SCALE: 1/4" = 1'-0"

NOTE: APPLY TILE ONLY TO FRONT KITCHEN WALLS VISIBLE FROM SERVICE COUNTER

**casablanca** DESIGN GROUP

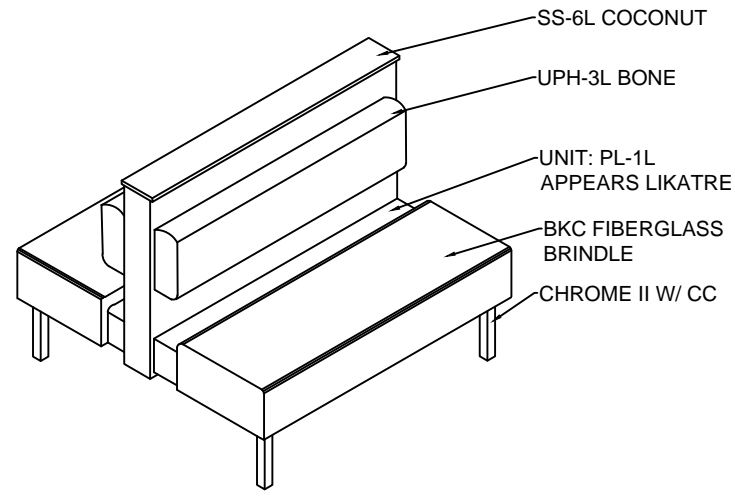
**Burger King Restaurant**  
LANSING, MI 161314: BK#6183:  
20/20 LO2 IMPROVED  
7416 W SAGINAW  
EHW/JRM

DATE	ISSUE / REVISION / DESCRIPTION
02.24.17	SNS- PRELIM PARTIAL DRAWINGS RELEASED

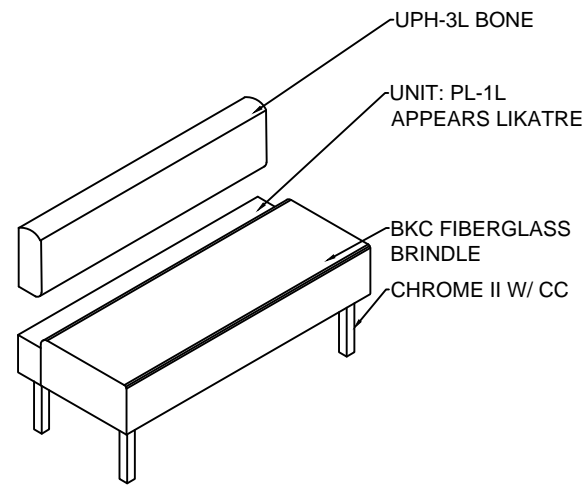
SHEET TITLE  
ELEVATIONS

SHEET  
**ID-13**

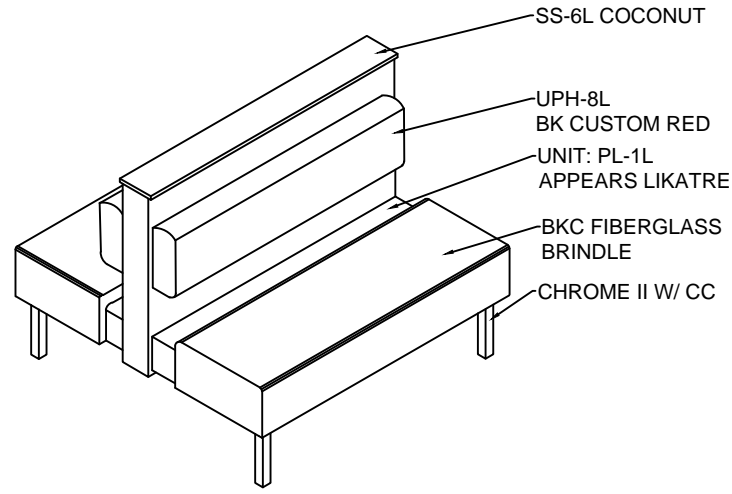
P: 770.423.9575  
F: 770.423.9402  
811 PICKENS INDUSTRIAL DR MARIETTA, GA 30062



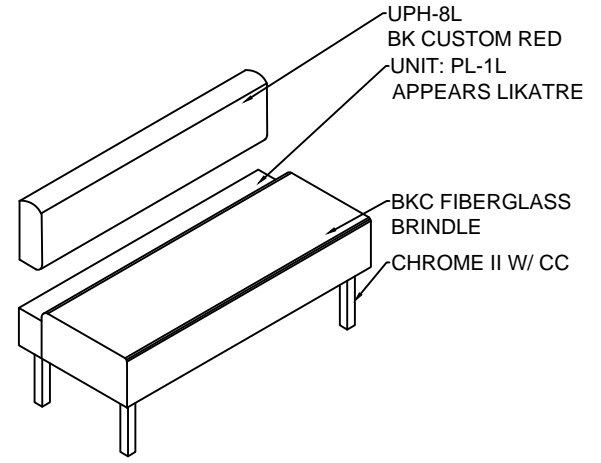
1 STANDARD DOUBLE BOOTH "A"



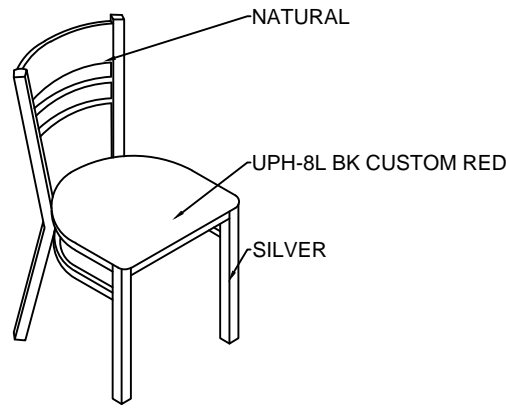
2 SETTEE WALL MOUNT BOOTH "B"



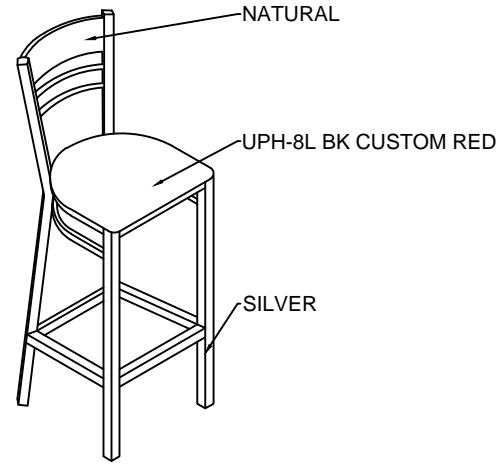
3 STANDARD DOUBLE BOOTH "C"



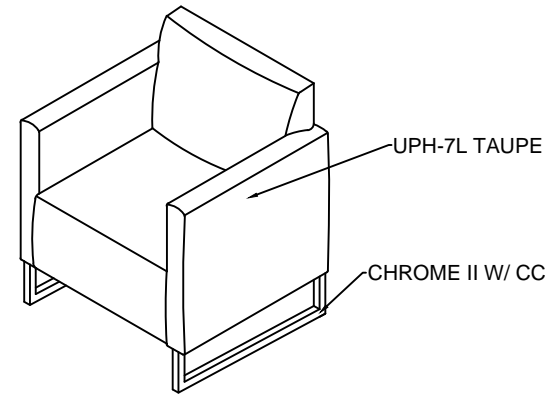
4 SETTEE WALL MOUNT BOOTH "D"



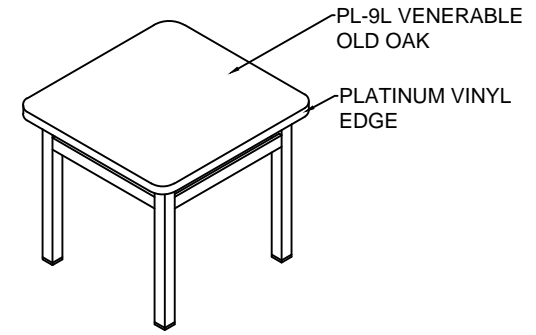
5 WOOD & STEEL CHAIR "A"



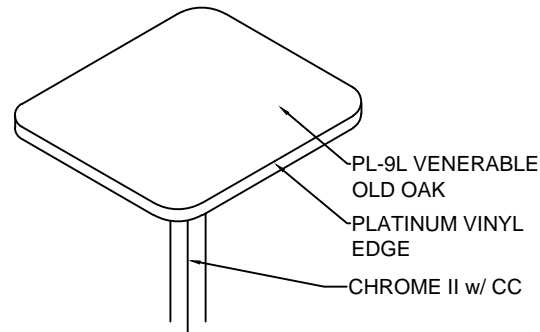
6 WOOD & STEEL CHAIR "B"



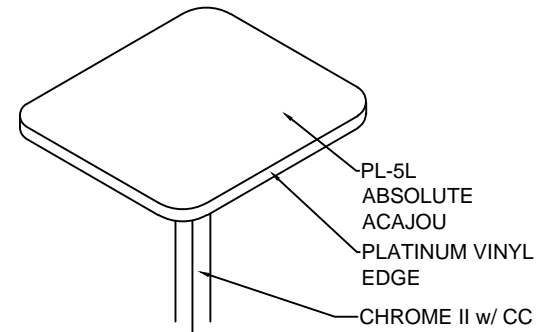
7 LOUNGE CHAIR "C"



8 LOUNGE TABLE



9 TABLE TOP "A"



10 TABLE TOP "B"

DATE	ISSUE / REVISION / DESCRIPTION
02.24.17	SNS- PRELIM PARTIAL DRAWINGS RELEASED

**Burger King Restaurant**  
LANSING, MI 161314: BK#6183:  
20/20 LO2 IMPROVED  
7416 W SAGINAW  
EHW/JRM







4.13.2017 Jakiya Mixon C:\Vault Workspace\Project Files1 - Projects\Burger King\Lansing, MI (7416 W Saginaw) BK#6183\Lansing, MI #161314\Design\Lansing, MI #161314 BK#6183 IMPROVED.dwg

**BKC 20/20 LIGHT (IMPROVED- BK CUSTOM RED) FURNITURE & DECOR (ALL ITEMS BY CDG UNO)**

CATEGORY	TYPE	QTY	SKU	DESCRIPTION/ PRODUCT NAME	CODE	FINISHES	COMMENTS
BANQUETTES- FIBERGLASS	A 42D FG	3	BS-BK3000-42D-00006	42" DOUBLE BOOTH FIBERGLASS	UPH-3L SS-6L PL-1L	BACKPAD: CF STINSON, AVANT AV130 BONE SEAT: BKC FIBERGLASS BRINDLE TOPCAP: LG SURFACES HI-MACS COCONUT SEAT FRAME & WALL: PIONITE, WP115-F APPEARS LIKATRE, SUPERMATTE FINISH METAL LEG SUPPORTS: CHROME II, W CC	
	B 42S FG	2	BS-BK3000-42S-00000	42" SINGLE BOOTH FIBERGLASS WALL MOUNTED W/ REAR SUPPORT LEGS	UPH-3L PL-1L	BACKPAD: CF STINSON, AVANT AV130 BONE SEAT: BKC FIBERGLASS BRINDLE SEAT FRAME: PIONITE, WP115-F APPEARS LIKATRE, SUPERMATTE FINISH METAL LEG SUPPORTS: CHROME II, W CC	
	C 60D FG	1	BS-BK3000-60D-00406	60" DOUBLE BOOTH FIBERGLASS	UPH-8L SS-6L PL-1L	BACKPAD: CF STINSON, BK CUSTOM RED SEAT: BKC FIBERGLASS BRINDLE TOPCAP: LG SURFACES HI-MACS COCONUT SEAT FRAME & WALL: PIONITE, WP115-F APPEARS LIKATRE, SUPERMATTE FINISH METAL LEG SUPPORTS: CHROME II, W CC	
	D 42S FG	1	BS-BK3000-42S-00400	42" SINGLE BOOTH FIBERGLASS WALL MOUNTED W/ REAR SUPPORT LEGS	UPH-8L PL-1L	BACKPAD: CF STINSON, BK CUSTOM RED SEAT: BKC FIBERGLASS BRINDLE SEAT FRAME: PIONITE, WP115-F APPEARS LIKATRE, SUPERMATTE FINISH METAL LEG SUPPORTS: CHROME II, W CC	
	D 60S FG	2	BS-BK3000-60S-00400	60" SINGLE BOOTH FIBERGLASS WALL MOUNTED W/ REAR SUPPORT LEGS	UPH-8L PL-1L	BACKPAD: CF STINSON, BK CUSTOM RED SEAT: BKC FIBERGLASS BRINDLE SEAT FRAME: PIONITE, WP115-F APPEARS LIKATRE, SUPERMATTE FINISH METAL LEG SUPPORTS: CHROME II, W CC	
	D 96S FG	1	BS-BK3000-96S-00400	96" SINGLE BOOTH FIBERGLASS WALL MOUNTED W/ REAR SUPPORT LEGS	UPH-8L PL-1L	BACKPAD: CF STINSON, BK CUSTOM RED SEAT: BKC FIBERGLASS BRINDLE SEAT FRAME: PIONITE, WP115-F APPEARS LIKATRE, SUPERMATTE FINISH METAL LEG SUPPORTS: CHROME II, W CC	
CHAIRS & STOOLS	A	21	CH-BK1900-U502	2020 METAL FRAME LADDER BACK CHAIR W/ WOOD BACK	UPH-8L	SEAT: CF STINSON, BK CUSTOM RED BACK: NATURAL FRAME: SILVER	
	B	6	CH-BK1910-U502	2020 METAL FRAME LADDER BACK BAR STOOL W/ WOOD BACK	UPH-8L	SEAT: CF STINSON, BK CUSTOM RED BACK: NATURAL FRAME: SILVER	
	C	2	US-CB500-U506	CDG JAYDEN LOUNGE CHAIR	UPH-7L	FINISH: MAHARAM; LARIAT 440401, TAUPE 010 METAL LEG: CHROME II W/ CC	
STEEL	CM1	11	CM1-CHROME	CM-1 32-3/4" TABLE STAND, UPGRADED FINISH		TCI 9911-01007-1 STEEL POWDERCOAT: TCI 9911-01007-1 NEARLY CHROME	
	CM2	7	CM2-CHROME	CM-2 32-3/4" OFFSET TABLE STAND, UPGRADED FINISH		TCI 9911-01007-1 STEEL POWDERCOAT: TCI 9911-01007-1 NEARLY CHROME	
	CM16	2	CM16-CHROME	CM-16 44-3/4" TABLE STAND, UPGRADED FINISH		TCI 9911-01007-1 STEEL POWDERCOAT: TCI 9911-01007-1 NEARLY CHROME	
	EC20	1	ST-CB-EC20-CHROME	20" METAL CTR END CLEAT; COUNTERS OVER 23" DP; UPGRADED FINISH		TCI 9911-01007-1 STEEL POWDERCOAT: TCI 9911-01007-1 NEARLY CHROME	
TABLE TOPS	A2442	6	TT-BK100-2442-LM509	24" X 42" LAMINATE TABLE TOP W/ VBE	PL-9L	TOP: NEVAMAR, WK0017T VENERABLE OLD OAK EDGE: PLATINUM VINYL BUMPER	
	A2442A	1	TT-BK100-2442A-LM509	24" X 42" LAMINATE TABLE TOP W/ VBE & ADA LOGO	PL-9L	TOP: NEVAMAR, WK0017T VENERABLE OLD OAK EDGE: PLATINUM VINYL BUMPER	
	B2124	1	TT-BK100-2124-LM505	21" X 24" LAMINATE TABLE TOP W/ VBE	PL-5L	TOP: PIONITE, WY160-N G48 ABSOLUTE ACAJOU EDGE: PLATINUM VINYL BUMPER	
	B2442A	2	TT-BK100-2442A-LM505	24" X 42" LAMINATE TABLE TOP W/ VBE & ADA LOGO	PL-5L	TOP: PIONITE, WY160-N G48 ABSOLUTE ACAJOU EDGE: PLATINUM VINYL BUMPER	
	B2460	2	TT-BK100-2460-LM505	24" X 60" LAMINATE TABLE TOP W/ VBE	PL-5L	TOP: PIONITE, WY160-N G48 ABSOLUTE ACAJOU EDGE: PLATINUM VINYL BUMPER	



P: 770423.9575  
811 PICKENS INDUSTRIAL DR MARIETTA, GA 30062  
F: 770.423.9402

DATE	ISSUE / REVISION / DESCRIPTION
02.24.17	SNS- PRELIM PARTIAL DRAWINGS RELEASED

**Burger King Restaurant**  
LANSING, MI 161314: BK#6183:  
20/20 LO2 IMPROVED  
7416 W SAGINAW  
EHW/JRM

SHEET TITLE  
**FURNITURE SCHEDULE**

SHEET  
**ID-17**



4.13.2017 Jakiya Mixon C:\Vault\Workspace\Project Files1 - Projects\Burger King\Lansing, MI (7416 W Saginaw) BK#6183\Lansing, MI #161314\Design\Lansing, MI #161314 BK#6183 IMPROVED.dwg

BKC 20/20 LIGHT (IMPROVED- BK CUSTOM RED) FURNITURE & DECOR (ALL ITEMS BY CDG UNO)							
CATEGORY	TYPE	QTY	SKU	DESCRIPTION/ PRODUCT NAME	CODE	FINISHES	COMMENTS
TRASH	A	2	WR-BK110-0106-G1	BKC SINGLE TRASH UNIT, EXTRA LARGE, 44 GAL LINER	PL-1L SS-6L	BODY & MAIN DOOR: WP115 APPEARS LIKATRE, SUPERMATTE FINISH TOP: LG SURFACES HI-MACS COCONUT EDGEBANDING: 3MM x 15/16" SLATE GREY TRASH BODY TEE MOULD: SILVER 1" CENTER BARB METAL FINISH: CHROME II W/ CC	
		1	WR-CB110-CHROME	EXTRA LINER, 44 GAL W/ STEEL TROLLEY & CASTERS		TROLLEY: CHROME II W/ CC	
SIGNAGE	A1	1 SET	MS-CB100-PL501	BLUE MEN & WOMEN'S RR SIGNS- NO WOOD PLAQUE		BLUE	
CEILING DÉCOR	A2	1	SC-BK200-146X133-0103	BKC CEILING SOFFIT W/ 2 ACCENT RECESSES 146X133X6	PL-1 PL-6L	MAIN LAM: WP115 APPEARS LIKATRE, SUPERMATTE FINISH RECESS ACCENT LAM: FORMICA, 6902-58 GRENADINE	GC TO PROVIDE EXTRA WOOD BLOCKING ABOVE CEILING TO MOUNT DÉCOR & CUT HOLES & PROVIDE LIGHT FIXTURES IN SOFFIT
TABLES: LOUNGE	A3	1	TC-BK1100-2424-LM509	BKC LOUNGE TABLE LAM VBE METAL 24X24X22	PL-9L	LAM: NEVAMAR, WK0017T VENERABLE OLD OAK EDGE: PLATINUM VBE FRAME: CHROME II W/ CC	
PARTITIONS: 48" AFF W/ ELECTRICAL OUTLETS	A4A	1	DC-BK1100-34E-TECH-0106	BKC FLOATING CD DIVIDER WALL ELEC UNDER TABLE FOR TECH TOP 34X48X4	PL-1L SS-6L	LAM: PIONITE, WP115 APPEARS LIKATRE, SUPERMATTE FINISH TOP CAP: LG SURFACES HI-MACS COCONUT METAL LEG FINISH: CHROME II W/ CC	GC TO PROVIDE POWER FROM CEILING THROUGH A8; GC TO RUN POWER TO TECHTOP A10A; (2) 3.5" DIA. CORE DRILL HOLES REQ'D, CDG TO PROVIDE TEMPLATE
	A4B	1	DC-BK1100-34EE-0106	BKC FLOATING CD DIVIDER WALL W/ ELEC BOTH SIDES 34X48X4	PL-1L SS-6L	LAM: PIONITE, WP115 APPEARS LIKATRE, SUPERMATTE FINISH TOP CAP: LG SURFACES HI-MACS COCONUT METAL LEG FINISH: CHROME II W/ CC	GC TO PROVIDE POWER FROM CEILING THROUGH A8; (2) 3.5" DIA. CORE DRILL HOLES REQ'D, CDG TO PROVIDE TEMPLATE
PARTITIONS: 40" AFF	A5A	2	DC-BK1200-30-0106	BKC FLOATING CD DIVIDER WALL 30X40X4	PL-1L SS-6L	LAM: PIONITE, WP115 APPEARS LIKATRE, SUPERMATTE FINISH TOP CAP: LG SURFACES HI-MACS COCONUT METAL LEG FINISH: CHROME II W/ CC	(2) 3.5" DIA. CORE DRILL HOLES REQ'D, CDG TO PROVIDE TEMPLATE
	A5B	2	DC-BK1200-44-0106	BKC FLOATING CD DIVIDER WALL 44X40X4	PL-1L SS-6L	LAM: PIONITE, WP115 APPEARS LIKATRE, SUPERMATTE FINISH TOP CAP: LG SURFACES HI-MACS COCONUT METAL LEG FINISH: CHROME II W/ CC	(2) 3.5" DIA. CORE DRILL HOLES REQ'D, CDG TO PROVIDE TEMPLATE
	A6A	1	DC-BK1200-62L-0106	BKC FLOATING CD DIVIDER WALL 62X40X4 W/ LEFT FINISHED END	PL-1L SS-6L	LAM: PIONITE, WP115 APPEARS LIKATRE, SUPERMATTE FINISH TOP CAP: LG SURFACES HI-MACS COCONUT METAL LEG FINISH: CHROME II W/ CC	(2) 3.5" DIA. CORE DRILL HOLES REQ'D, CDG TO PROVIDE TEMPLATE
	A6B	1	DC-BK1200-142-0106	BKC FLOATING CD DIVIDER WALL 142X40X4	PL-1L SS-6L	LAM: PIONITE, WP115 APPEARS LIKATRE, SUPERMATTE FINISH TOP CAP: LG SURFACES HI-MACS COCONUT METAL LEG FINISH: CHROME II W/ CC	(4) 3.5" DIA. CORE DRILL HOLES REQ'D, CDG TO PROVIDE TEMPLATE
	A6C	1	DC-BK1220-133-0106	BKC FLOATING CD DIVIDER WALL W/ TRIM STRIP 133X40X4	PL-1L SS-6L	LAM: PIONITE, WP115 APPEARS LIKATRE, SUPERMATTE FINISH TOP CAP: LG SURFACES HI-MACS COCONUT TRIM STRIP: SATIN STAINLESS INLAY METAL LEG FINISH: CHROME II W/ CC	(4) 3.5" DIA. CORE DRILL HOLES REQ'D, CDG TO PROVIDE TEMPLATE
PARTITION: SCREENS	A7	3	DC-BK5300-36-AC501	BKC 3/8" PLEX SCREEN 36"W X 48"H PANEL W/ 1" DIA S STEEL POSTS	R-1L	PLEX: 3FROM, VARIA ECORESIN, TING TING, 3/8" EDGE-POLISHED FINISH, PATENT FINISH - FRONT AND BACK RODS AND CLIPS: MACHINED ALUMINUM/ CLEAR SATIN ANNODIZED	GC TO PROVIDE EXTRA BLOCKING IN CEILING FOR DÉCOR
	A8	2	DC-BK5420-34X54-01031	BKC TALL SCREEN LAM W/ PLEX 34" X 54" X 4"	PL-1L PL-6L R-1L	PLEX: 3FROM, VARIA ECORESIN, TING TING, 3/8" EDGE-POLISHED FINISH, PATENT FINISH - FRONT AND BACK HARDWARE" 1" DIA S STEEL POSTS W/ FLANGES	GC TO PROVIDE EXTRA BLOCKING IN CEILING FOR DÉCOR
	A9	2	DC-BK5800-39-0101	BKC PLEX DIVIDER SCREEN LAM 39X17X4	PL-1L R-1L	LAM: PIONITE, WP115 APPEARS LIKATRE, SUPERMATTE FINISH PLEX: 3FROM, VARIA ECORESIN, TING TING, 3/8" PATENT FINISH - FRONT AND BACK SUPPORT POST FINISH: STAINLESS STEEL TUBING	
COMMUNITY TABLES	A10A	1	TC-BK1012-6-SS516-TECH	BKC COMMUNITY TABLE W/ 2 LONG 3" APRONS W/ 4 TECH TOP CHARGING PADS & CUSTOM END CLEATS 78X29X3	SS-6L	TOP & APRONS: LG SURFACES HI-MACS COCONUT 4 TECH TOP CHARGING PADS END CLEATS: CHROME II W/ CC	
	A10B	1	TC-BK1013-4A-SS516	BKC COMMUNITY TABLE W/ (3) 3" APRONS W ADA LOGO 47X29X3	SS-6L	TOP & APRONS: LG SURFACES HI-MACS COCONUT	
QUEUE RAILING	A11A	1	QR-BK100-42	BKC SSTEEL QUEUE RAILING 42 W/RADIUS CORNERS			(2) 3" DIA. CORE DRILL HOLES REQ'D
	A11B	1	QR-BK100-84	BKC SSTEEL QUEUE RAILING 84 W/RADIUS CORNERS			(3) 3" DIA. CORE DRILL HOLES REQ'D



P: 770423.9575  
811 PICKENS INDUSTRIAL DR MARIETTA, GA 30062

DATE	ISSUE / REVISION / DESCRIPTION
02.24.17	SNS- PRELIM PARTIAL DRAWINGS RELEASED

**Burger King Restaurant**  
LANSING, MI 161314: BK#6183:  
20/20 LO2 IMPROVED  
7416 W SAGINAW  
EHW/JRM

SHEET TITLE  
**DECOR SCHEDULE**

SHEET  
**ID-18**

4.13.2017 Jakiya Mixon C:\Vault Workspace\Project Files1 - Projects\Burger King\Lansing, MI (7416 W Saginaw) BK#6183\Lansing, MI #161314\Design\Lansing, MI #161314 BK#6183 IMPROVED.dwg

BURGER KING- 20/20 LIGHT INTERIOR							
INTERIOR MATERIALS & FINISH SCHEDULE **TO BE USED WITH 20/20 LIGHT GUIDELINES DOC.							
2/7/2017							
CODE	MATERIAL	LOCATION	MANUFACTURER	DESCRIPTION			ADDITIONAL INFORMATION
				PRODUCT	COLOR	DIMENSION	
ACOUSTICAL CEILING							
ACT-1L	ACOUSTICAL CEILING TILE	DINING	ARMSTRONG	FINE FISSURED #1732	WHITE GRID: 2 x2 ANGLED TEGULAR 15/16 GRID COLOR: WHITE	2' X 2' X 3/4"	CONTACT: LOUIS J. JOHN - NATIONAL ACCOUNTS MANAGER 407-697-6768 LJOHN@ARMSTRONG.COM
ACT-1L UPGRADE	ACOUSTICAL CEILING TILE	DINING		FINE FISSURED #1732	ADOBE GRID: 2 x2 ANGLED TEGULAR 15/16 GRID COLOR: ADOBE	2' X 2' X 3/4"	
ACT-2L	ACOUSTICAL CEILING TILE	BACK OF HOUSE					GC TO REFER TO ARCHITECTURAL DRAWINGS, PER OWNERS REQUEST
FLOOR & WALL FINISHES AT DINING, RESTROOMS & BACK OF HOUSE							
DECORATIVE FLOOR & WALL TILES OPTION A							
CT-2L	CERAMIC TILE	FIELD TILE	INTERCERAMIC	ADVANCED GRIGIO	ADVANCED GRIGIO	12" X 24"	NOTE: USE WITH GR-8L
CT-9L	CERAMIC TILE	FOOD PREP		IC BRITE	ULTA WHITE	8" X 10"	NOTE: USE WITH GR-5L
CT-12L	CERAMIC TILE	DINING AREA BASE		ADVANCED GRIGIO	ADVANCED GRIGIO	6" X 24" (CUT TILE)	NOTE: USE WITH GR-8L
CT-12L	CERAMIC TILE	BULLNOSE DINING AREA BASE		ADVANCED GRIGIO	ADVANCED GRIGIO LIPICA	3" X 24" BULLNOSE	NOTE: USE WITH GR-8L
DECORATIVE FLOOR & WALL TILES OPTION B							
CT-6L	CERAMIC TILE	RESTROOMS TOILET WALL	GRANITI FIANDRE	EUROWEST	ISHI BAMBOO MOSAIC	MOSAIC	CONTACT: JAN DETER AT EUROWEST (714) 309-9551 JOY KLEIN 813-334-3302 jklein@transceramica.com NOTE: USE WITH GR-12L; TO BE APPLIED BEHIND TOILET. RUN VERTICALLY.
DECORATIVE FLOOR & WALL TILES OPTION C							
CT-1L	CERAMIC TILE	ACCENT TILE	EMSER TILE	ALPINE	ESPRESSO	6" X 36"	CONTACT: TAMARA RAMSEY (303) 902-3992 NOTE: USE WITH GR-1L
CT-3L	CERAMIC TILE	RESTROOMS		SPECULAR	NYSHIRA	12"X12"	NOTE: USE WITH GR-3L
CT-4L	CERAMIC TILE	COVE BASE RESTROOMS		SPECULAR	NYSHIRA COVE	6" X 12"	NOTE: USE WITH GR-3L
CT-5L	CERAMIC TILE	RESTROOMS		SPECULAR	ACAMAR	12"X12"	NOTE: USE WITH GR-4L
CT-7L	CERAMIC TILE	COVE BASE RESTROOMS		SPECULAR	ACAMAR	6" X 12"	NOTE: USE WITH GR-4L
CT-8L	CERAMIC TILE	BULLNOSE RESTROOMS		SPECULAR	ACAMAR	3" X 12"	NOTE: USE WITH GR-4L
DECORATIVE FLOOR & WALL TILES OPTION D							
GROUT							
GR-1L	GROUT	ACCENT TILE	CUSTOM BUILDING PRODUCTS	POLYBLEND SANDED	#185 - NEW TAUPE		NOTE: USE WITH CT-1L *** FOR SETTING MATERIALS USE COMPLETE CONTACT RAPID SET
			MAPEI	SANDED	#09 GRIS		NOTE: USE WITH CT-1L *** FOR SETTING MATERIALS USE MAPEI ULTRA-CONTACT-GRAY
GR-2L	GROUT	WALL TILE	CUSTOM BUILDING PRODUCTS	POLYBLEND SANDED	#101 QUARTZ		NOTE: USE WITH CT-16L/CT-21L *** FOR SETTING MATERIALS USE COMPLETE CONTACT RAPID SET
			MAPEI	SANDED	#14 BISCUIT		NOTE: USE WITH CT-16L/CT-21L *** FOR SETTING MATERIALS USE MAPEI ULTRA-CONTACT-GRAY
GR-3L	GROUT	RESTROOMS	CUSTOM BUILDING PRODUCTS	POLYBLEND SANDED	#19 PEWTER		NOTE: USE WITH CT-3L, CT-4L *** FOR SETTING MATERIALS USE COMPLETE CONTACT RAPID SET
			MAPEI	SANDED	#47 CHARCOAL		NOTE: USE WITH CT-3L, CT-4L *** FOR SETTING MATERIALS USE MAPEI ULTRA-CONTACT-GRAY
GR-4L	GROUT	RESTROOMS	CUSTOM BUILDING PRODUCTS	POLYBLEND SANDED	#101 QUARTZ		NOTE: USE WITH CT-5L, CT-7L, CT-8L *** FOR SETTING MATERIALS USE COMPLETE CONTACT RAPID SET
			MAPEI	SANDED	#44 PALE UMBER		NOTE: USE WITH CT-5L, CT-7L, CT-8L *** FOR SETTING MATERIALS USE MAPEI ULTRA-CONTACT-GRAY
GR-5L	GROUT	FOOD PREP	CUSTOM BUILDING PRODUCTS	POLYBLEND SANDED	#381 - BRIGHT WHITE		NOTE: USE WITH CT-9L *** FOR SETTING MATERIALS USE COMPLETE CONTACT RAPID SET
			MAPEI	ULTRA COLOR UNSANDED	#38 AVALANCHE		NOTE: USE WITH CT-9L *** FOR SETTING MATERIALS USE MAPEI ULTRA-CONTACT-GRAY
GR-8L	GROUT	FIELD TILE	CUSTOM BUILDING PRODUCTS	POLYBLEND SANDED	#386 OYSTER GRAY		NOTE: USE WITH CT-2L *** FOR SETTING MATERIALS USE COMPLETE CONTACT RAPID SET
			MAPEI	ULTRA COLOR UNSANDED	#02 PEWTER		NOTE: USE WITH CT-2L *** FOR SETTING MATERIALS USE MAPEI ULTRA-CONTACT-GRAY
GR-11L	GROUT	FIELD TILE	CUSTOM BUILDING PRODUCTS	POLYBLEND SANDED	#145 LIGHT SMOKE		NOTE: USE WITH WP-1L *** FOR SETTING MATERIALS USE COMPLETE CONTACT RAPID SET
			MAPEI	ULTRA COLOR UNSANDED	#05 CHAMOIS		NOTE: USE WITH WP-1L
GR-12L	GROUT	RESTROOM	LATICRETE	POLYBLEND SANDED	#24 NATURAL GREY		NOTE: USE WITH CT-6L *** FOR SETTING MATERIALS USE COMPLETE CONTACT RAPID SET
GR-14L	GROUT	FSC KNEEWALL / ACCENT WALL	CUSTOM BUILDING PRODUCTS	POLYBLEND SANDED	#52 TOBACCO BROWN		NOTE: USE WITH CT-20L*** FOR SETTING MATERIALS USE COMPLETE CONTACT RAPID SET

P: 770.423.9575  
811 PICKENS INDUSTRIAL DR MARIETTA, GA 30062

DATE

ISSUE / REVISION / DESCRIPTION

02.24.17

SNS- PRELIM PARTIAL DRAWINGS RELEASED

**Burger King Restaurant**

LANSING, MI 161314: BK#6183:  
20/20 LO2 IMPROVED

7416 W SAGINAW  
EHW/JRM

SHEET TITLE

BUILDING FINISH  
SCHEDULE

SHEET

ID-19

SHEET

4.13.2017 Jakiya Mixon C:\Vault Workspace\Project Files1 - Projects\Burger King\Lansing, MI (7416 W Saginaw) BK#6183\Lansing, MI #161314\Design\Lansing, MI #161314 BK#6183 IMPROVED.dwg

BURGER KING- 20/20 LIGHT INTERIOR							
INTERIOR MATERIALS & FINISH SCHEDULE **TO BE USED WITH 20/20 LIGHT GUIDELINES DOC.							
2/7/2017							
CODE	MATERIAL	LOCATION	MANUFACTURER	DESCRIPTION			ADDITIONAL INFORMATION
				PRODUCT	COLOR	DIMENSION	
BACK OF HOUSE FLOOR TILE							
CT-10L	QUARRY TILE	BACK OF HOUSE FLOORING	DAL-TILE	QUARRY TILE	0Q42 ARID GRAY ***ADD ABRASIVE GRAIN	6" X 6"	<b>NOTE: USE WITH GR-6L</b>
CT-11L	QUARRY TILE BASE	BACK OF HOUSE COVE BASE	DAL-TILE	QUARRY TILE	Q-3565 COVE BASE - ARID GRAY	5" X 6"	<b>NOTE: USE WITH GR-6L</b>
GR-6L	GROUT	BACK OF HOUSE	LATICRETE	SPECTRALOCK 2000 IG	# 45 "RAVEN"		<b>NOTE: USE WITH CT-10L, CT-11L</b> CONTACT: KIRBY DAVIS AT LATICRETE (203) 671-7210
TS -1L	TRANSITION STRIP	CERAMIC TILE TO CERAMIC TILE	SCHLUTER SYSTEMS	TRANSITION PROFILES FOR FLOORS	SCHIENE (RADIUS) AE 100 - R, SATIN ANODIZED ALUMINUM 3/8" - 10MM		CONTACT: EARL MAICUS AT SCHLUTER SYSTEMS 800-267-0817 EMAICUS@SCHLUTER.COM
WALL FINISHES / PAINT							
CT-16L	STONE	WALL ACCENT	EMSER TILE	SPLIT FACE OFFSET BEIGE	ANTIQUÉ & TUMBLED STONE MOSAIC NOTE: GC TO SEAL STONE	12" x 12"	CONTACT: TAMARA RAMSEY (303) 902-3992 <b>NOTE: USE WITH GR-2L</b> Manufacturer Recommended Sealer: Miracle Sealants 511 Impregnator
CT-20L	CERAMIC TILE	FSC KNEE WALL & ACCENT WALL	GRANITI FIANDRE	LEGNI HIGH TECH	ROVERE MOKA	6" X 36" STACKED BOND	CONTACT: JAN DETER AT EUROWEST (714) 309-9551 JOY KLEIN 813-334-3302 jklein@transceramica.com <b>NOTE: USE WITH GR-14L</b>
CT-21L	CERAMIC TILE	WALL ACCENT	GRANITI FIANDRE	T577	WILD SILK	12" x 24"	CONTACT: JAN DETER AT EUROWEST (714) 309-9551 JOY KLEIN 813-334-3302 jklein@transceramica.com NOTE: CAN BE PROVIDED FOR LOCATION THAT REQUIRES LIGHTER COLOR TILES BEHIND BEVERAGE STATION <b>NOTE: USE WITH GR-2L</b> Exception form to include building department health requirements which does not allow the use of a natural stone on the FSC corner wall.
FRP-1L	FIBERGLASS REINFORCED PANEL	BACK OF HOUSE					GC TO REFER TO ARCHITECTURAL DRAWINGS, PER OWNERS REQUEST
MT-1L	METAL	FRONT COUNTER ACCENT	PPG	BAR STOCK	CLEAR ALUMINUM	1/4" X 1/4"	Contact: Rick Garlin PPG Corporate National Accounts Manager phone: 317-318-5800 email: garlin@ppg.com
P-2L	PAINT	EXPOSED CEILING ACCENT- BLACK MENU BOARD SOFFIT		<b>PRIMER:</b> 17-921 (Primer Color Grey) <b>PAINT:</b> PPG 6-411 (Alt. PPG 25-250) Eggshell	DEEP ONYX 00NN 07/000		
P-3L	PAINT	INTERIOR WALLS		<b>PRIMER:</b> 6-2 <b>PAINT:</b> PPG 6-411 Eggshell	WRIGHT STONE 10YY 30/106		
P-4L	PAINT	INTERIOR DOOR FRAMES		<b>PRIMER:</b> 6-212 <b>PAINT:</b> 6-1110XI	WRIGHT STONE 10YY 30/106		
P-5L	PAINT	RESTROOM CEILING		<b>PRIMER:</b> 6-2 <b>PAINT:</b> PPG 6-411 Eggshell	WHITE ON WHITE 30GY 88/014		
P-11L	PAINT	INTERIOR WALLS ACCENT		<b>PRIMER:</b> 6-2 <b>PAINT:</b> PPG 6-411 Eggshell	TRADITIONAL TAN 20YY 47/145		
P-14L (SEE NOTE FOR USAGE)	PAINT	ACCENT PAINT SOFFIT		<b>PRIMER:</b> 6-212 <b>PAINT:</b> PPG 6-411 (Alt. PPG 25-250) Eggshell	FLAMING RED Custom Formula		



P: 770.423.9575  
F: 770.423.9402  
8111 PICKENS INDUSTRIAL DR MARIETTA, GA 30062

DATE	ISSUE / REVISION / DESCRIPTION
02.24.17	SNS- PRELIM PARTIAL DRAWINGS RELEASED

**Burger King Restaurant**  
LANSING, MI 161314: BK#6183:  
20/20 LO2 IMPROVED  
7416 W SAGINAW  
EHW/JRM

SHEET TITLE  
**BUILDING FINISH SCHEDULE**

SHEET  
**ID-20**

4.13.2017 Jakiya Mixon C:\Vault\Workspace\Project Files1 - Projects\Burger King\Lansing, MI (7416 W Saginaw) BK#6183\Lansing, MI #161314\Design\Lansing, MI #161314 BK#6183 IMPROVED.dwg

**BURGER KING- 20/20 LIGHT INTERIOR**

**INTERIOR MATERIALS & FINISH SCHEDULE \*\*TO BE USED WITH 20/20 LIGHT GUIDELINES DOC.**

**2/7/2017**

CODE	MATERIAL	LOCATION	MANUFACTURER	DESCRIPTION			ADDITIONAL INFORMATION
				PRODUCT	COLOR	DIMENSION	
PL-1L	PLASTIC LAMINATE	DOORS (SEE PLANS)	PIONITE	PLASTIC LAMINATE	APPEARS LIKATRE WP115-SUPERMATTE Note: BK finish is Super matte. No finish substitutions		CONTACT: NICOLE LEE AT PANOLAM INDUSTRIES 561-353-6840 Nicole_lee@panolam.com BK LAMINATE ORDER THROUGH JOHN TRULOCK 407-618-3732 John_Trulock@panolam.com
PL-1L	PLASTIC LAMINATE	DOORS (SEE PLANS)	WILSONART	PLASTIC LAMINATE	11101K-12 NORTHERN PINE		CONTACT: PATTY GOFFE@ WILSONART 678-296-7271
TR-1L	METAL TRIM	DINING FLOOR TRANSITION	SCHLUTER	AE 100 D	SATIN ANODIZED ALUMINUM	3/8" TILE THICKNESS	CONTACT: EARL MAICUS @ SCHLUTER SYSTEMS 800-267-0817 EMAICUS@SCHLUTER.COM
TR-2L	METAL TRIM	GENERAL DINING TRANSITION		RECTANGULAR BAR STOCK	BRUSHED ALUMINUM	1" X 1/4"	
TR-3L	METAL TRIM	GENERAL WALL TRANSITION		CORNER GUARD	BRUSHED ALUMINUM	1/2" X 1/2"	
TR-4L	METAL TRIM	TRANSITION TILED WALL CHAIRRAIL		SCHLUTER RONDEC-AE	SATIN ANODIZED ALUMINUM		
TR-5L	METAL TRIM	TRANSITION COVE BASE		SCHLUTER DILEX EHK	STAINLESS STEEL		
TR-6L	METAL TRIM	TRANSITION TILED CORNERS		SCHLUTER RONDEC-AE	SATIN ANODIZED ALUMINUM		
WP-1L UPGRADE	CERAMIC TILE	GENERAL WAINSCOTING & COVE BASE	GRANITI FIANDRE	EUROWEST	HAZELNUT TAN	12" X 24"	CONTACT: JAN DETER AT EUROWEST (714) 309-9551 JOY KLEIN 813-334-3302 jklein@transceramica.com <b>NOTE: USE WITH GR-11L</b>
<b>SOLID SURFACE</b>							
SS-6L	SOLID SURFACE	FIXTURES AS NOTED	LG SURFACES	SOLID SURFACE	HI-MACS COCONUT	1/2" THICKNESS	CONTACT: CHERI RUKAVINA @ LG SURFACES (404) 435-8092
<b>DÉCOR</b>							
DH01	DÉCOR	DOOR HANDLE	NAUTICAL FURNISHINGS, LLC	BRANDED WOOD DOOR HANDLES WITH METAL BRACKETS	IPE WOOD 8" X 3.4" WITH 1" X 1/8" WITH 1" POWDER COATED METAL BRACKETS TO MATCH	35" X 8"	CONTACT: MICHAEL HOGLUND 954.771.1100 MHOGLUND@NAUTICALFURNISHINGS.COM



P: 770.423.9575  
811 PICKENS INDUSTRIAL DR MARIETTA, GA 30062  
F: 770.423.9402

DATE	ISSUE / REVISION / DESCRIPTION
02.24.17	SNS- PRELIM PARTIAL DRAWINGS RELEASED

**Burger King Restaurant**  
LANSING, MI 161314: BK#6183:  
20/20 LO2 IMPROVED  
7416 W SAGINAW  
EHW/JRM

SHEET TITLE  
**BUILDING FINISH  
SCHEDULE**

SHEET  
**ID-21**