



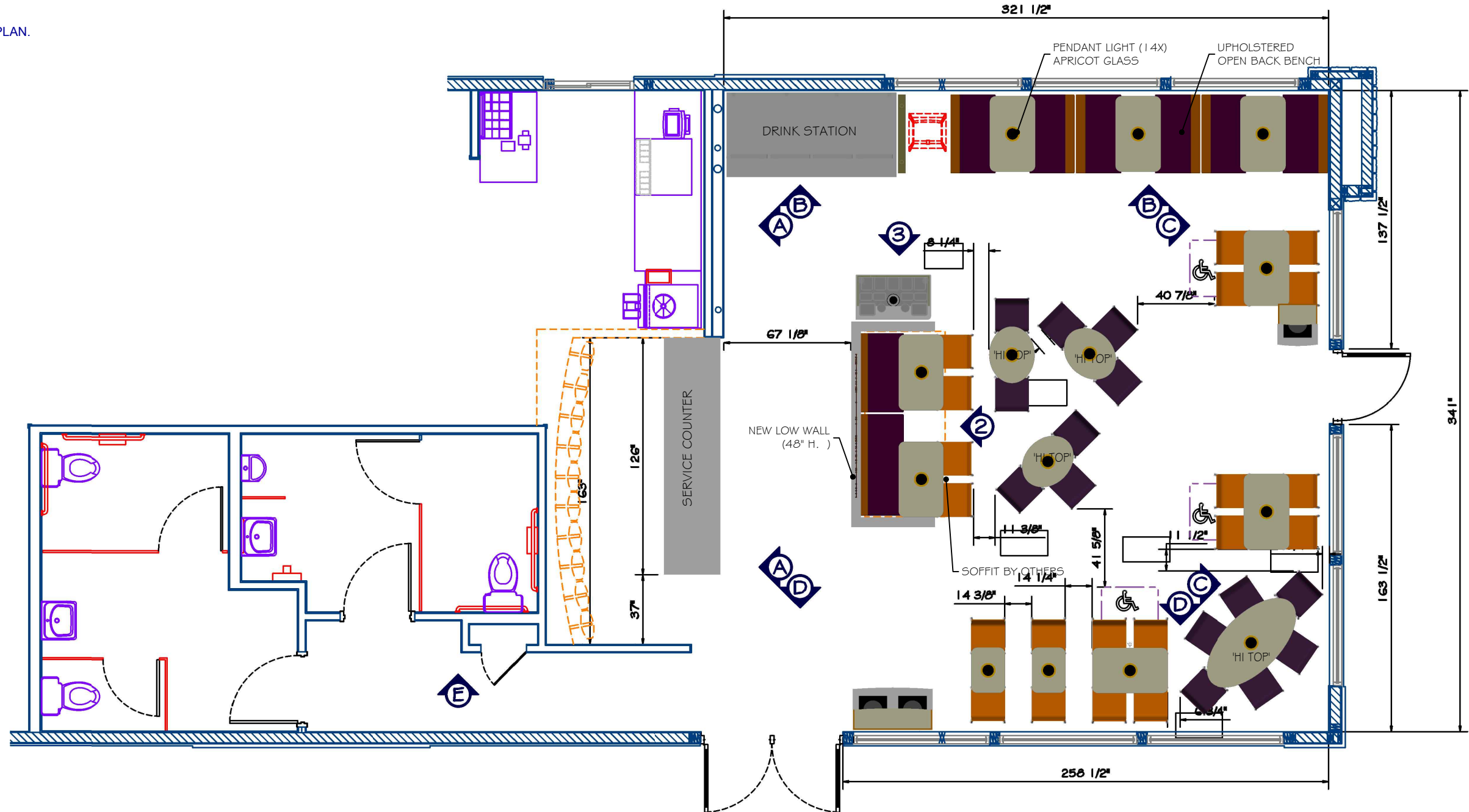
All Dimensions of the site and/or building are supplied by the customer or his agent. Dimensions of items not provided but marked "HOLD" by CMI must be exactly maintained to assure proper tie-in with CMI's provided items. Customer has agreed to assume responsibility of control of all dimensions of the site and/or building and items not provided by CMI, and for any added costs if such dimensions are not held to normal construction tolerances.  
Any reproduction or use of this material without written consent of CMI is prohibited.



STORE #: -  
PROJECT #: 02734\_00  
ADDRESS: Freeport Road  
CITY/ST: Natrona Heights, PA

**NOTES:**

1. COMPLIANCE WITH "A.D.A." (AMERICANS WITH DISABILITIES ACT) IS THE SOLE RESPONSIBILITY OF THE OWNER
2. VERIFY ALL BOXED DIMENSIONS.
3. DO NOT BUILD DIVIDER WALLS FROM THIS PLAN. EXACT DIMENSIONS AND LOCATIONS TO FOLLOW WITH INSTALLATION DRAWINGS. BUILDING DIMENSIONS SUBJECT TO VERIFICATION.
4. DO NOT CORE DRILL FROM THIS PLAN.



NEW SEATING CAPACITY = 50


STORE No.:

**Natrona Heights, PA**



REVISION	DATE	BY

SHEET TITLE: SEATING PLAN  
 SCALE: 3/16" = 1'-0"  
 ADDRESS: Freeport Road  
 Natrona Heights, PA



ACCOUNT: TB  
 DESIGN BY: Henry  
 DATE: 5/4/17  
 PROJECT NO.: F\_02734  
 REVISION: 00 SHEET NO.: 1



MTS BAR STOOL



MTS CHAIR

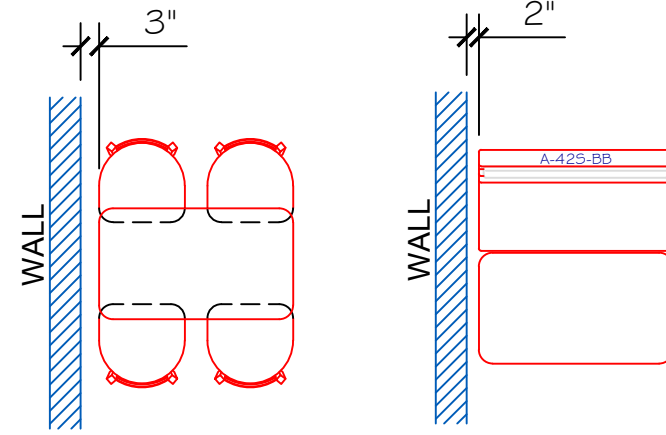
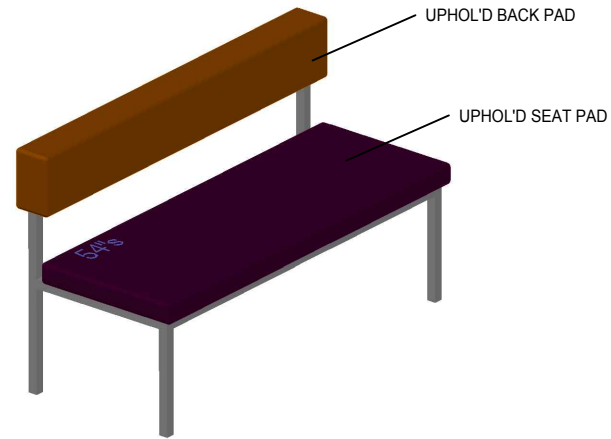


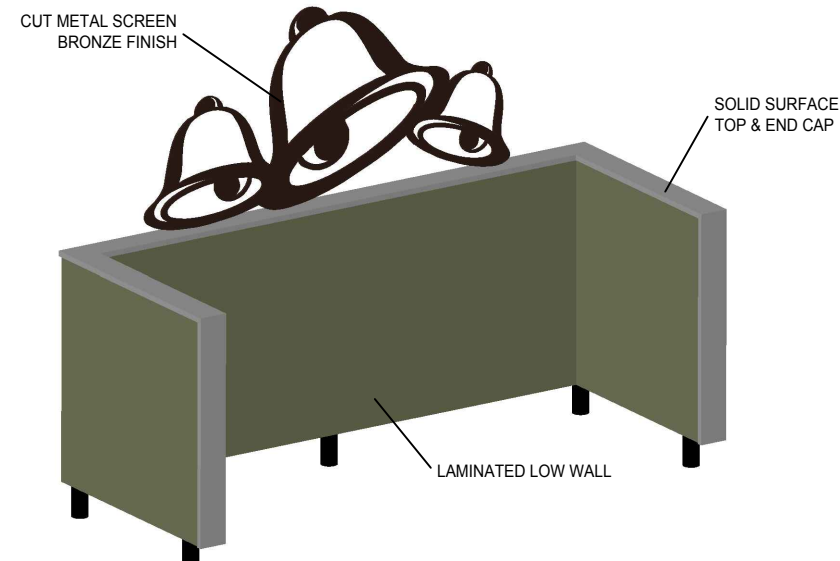
TABLE TOP / CHAIRS

TABLE TOP / BOOTH

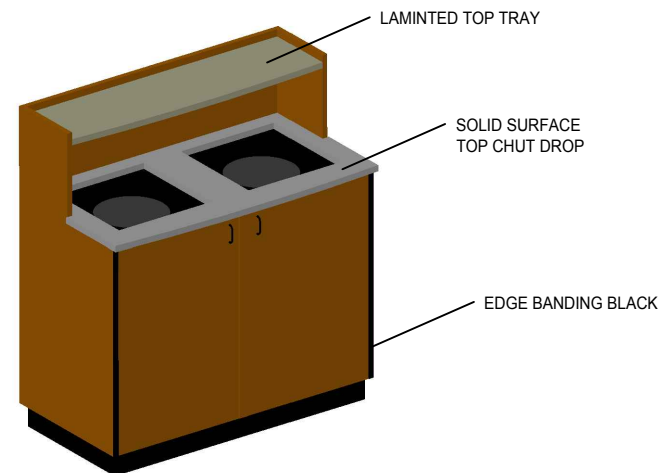
TYPICAL WALL SPACING



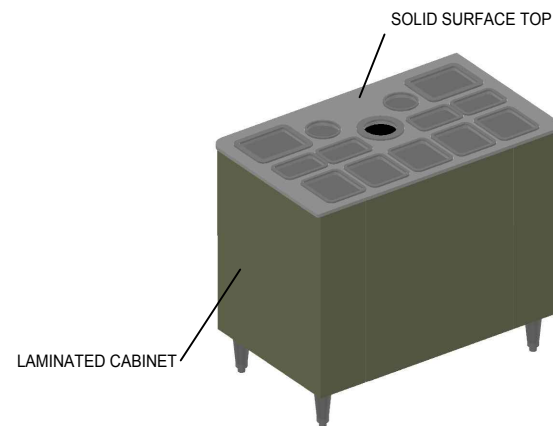
UPHOLSTERED OPEN BACK BOOTH



LOW WALL WITH METAL SCREEN



WASTE CABINET WITH TRAY



COND. CABINET

STORE No.:

REVISION	DATE	BY

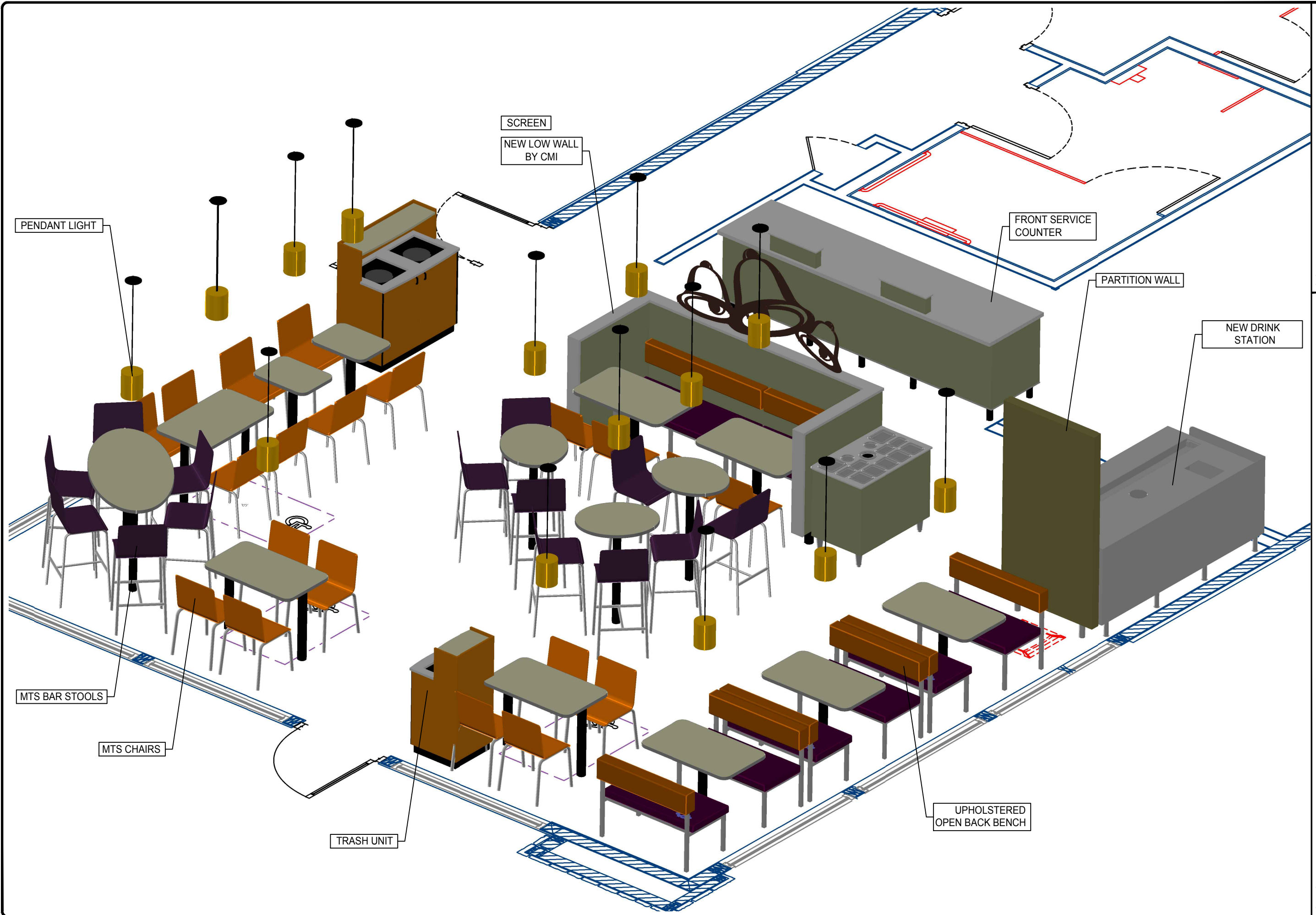
SHEET TITLE: PRODUCT LINE  
SCALE: N.T.S.  
ADDRESS: Freeport Road  
Natrona Heights, PA

**TACO BELL**  
ACCOUNT: TB  
DESIGN BY: Henry  
DATE: 5/4/17  
PROJECT NO.: **PL\_02734**  
REVISION: 00 SHEET NO.: 2



**Natrona Heights, PA**

CITY, ST



1 | 2 | 3 | 4 | 5 | 6 | 7

STORE No.:

**Natrona Heights, PA**

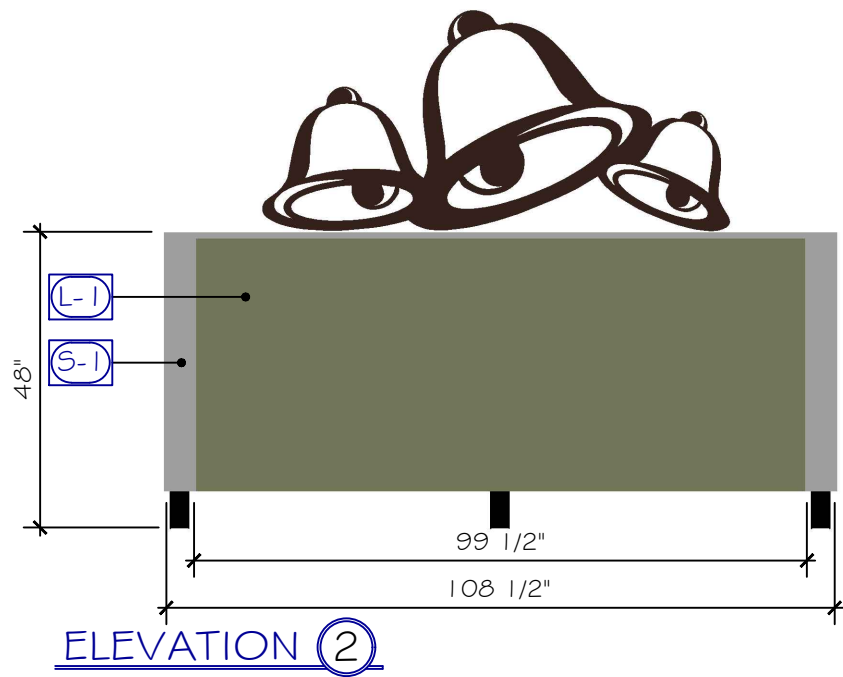
CITY, ST

Commercial Millwork & Installation L.L.C.  
356 Industrial Road - Newport, TN 37821

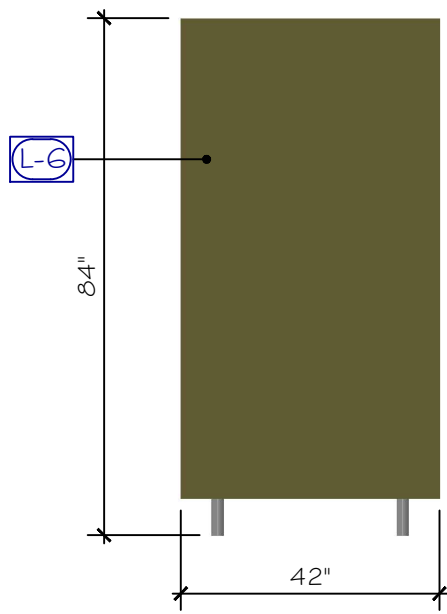
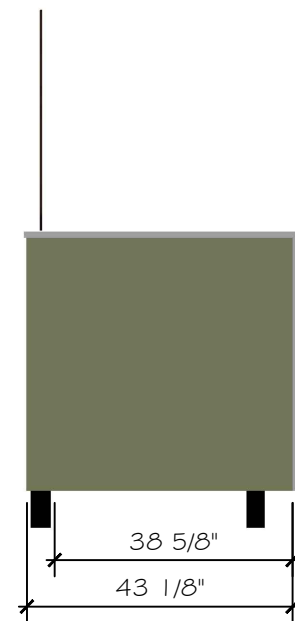
BY	DATE	REVISION

SHEET TITLE: PRODUCT LINE LAYOUT  
SCALE: N.T.S.  
ADDRESS: Freeport Road  
Natrona Heights, PA

ACCOUNT: TB  
DESIGN BY: Henry  
DATE: 5/4/17  
PROJECT NO.: PL1\_02734  
REVISION: 00 SHEET NO.: 3



**ELEVATION ③**



UNLESS OTHERWISE SPECIFIED

- L-1** MATL: WILSONART LAMINATE  
COLOR: LODEN ZEPHYR
- L-2** MATL: WILSONART LAMINATE  
COLOR: SPICED ZEPHYR
- L-4** FINISH: NEVAMAR  
COLOR: CARMEL SAGAWOOD
- L-5** MATL: WILSONART LAMINATE  
COLOR: ANTIQUE BRUSH

- L-6** MATL: NEVAMAR MR5004T  
COLOR: SHALE GREEN MATRIX
- S-1** MATL: WILSONART SOLID SURFACE  
COLOR: AVALANCHE MELANGE
- WC-4** MATL: FORBO MARMOLEUM  
COLOR: 3141 HIMALAYA
- WC-5** MATL: FORBO MARMOLEUM WALTON  
COLOR: 173 PAVING

- TM-1** WOOD STAIN  
COLOR: TO MATCH DALEY'S #45
- P-1** DISTRIBUTOR: SHERWIN WILLIAMS  
COLOR: SW7069 IRON ORE (DK. GREY)
- P-5** DISTRIBUTOR: SHERWIN WILLIAMS  
COLOR: SW6839 KIMONO VIOLET
- P-6** DISTRIBUTOR: SHERWIN WILLIAMS  
COLOR: SW6167 GARDEN GATE

- P-7** DISTRIBUTOR: SHERWIN WILLIAMS  
COLOR: SW7069 IRON ORE (GLOSS)
- P-8** DISTRIBUTOR: SHERWIN WILLIAMS  
COLOR: SW6116 TATAMI TAN
- P-9** DISTRIBUTOR: SHERWIN WILLIAMS  
COLOR: SW6108 LATTE
- P-13** DISTRIBUTOR: SHERWIN WILLIAMS  
COLOR: SW7008 ALABASTER WHITE

- WT-2** MATL: DAL TILE  
COLOR: SOLEIL LINEN #F687 - 12"X12"
- WT-4** MATL: DAL TILE  
COLOR: SOLEIL LINEN #F687 - 12"X24"
- WT-5** MATL: DAL TILE  
COLOR: SOLEIL LINEN #F687 - 3-1/2" X 12"
- B-1** MATL: (BASE TILE) DAL TILE TERRA ANTIQUA  
COLOR: ROSSO TA-02 - 6"X12" COVE BASE

STORE No.:

**Natrona Heights, PA**

CITY, ST

REVISION	DATE	BY

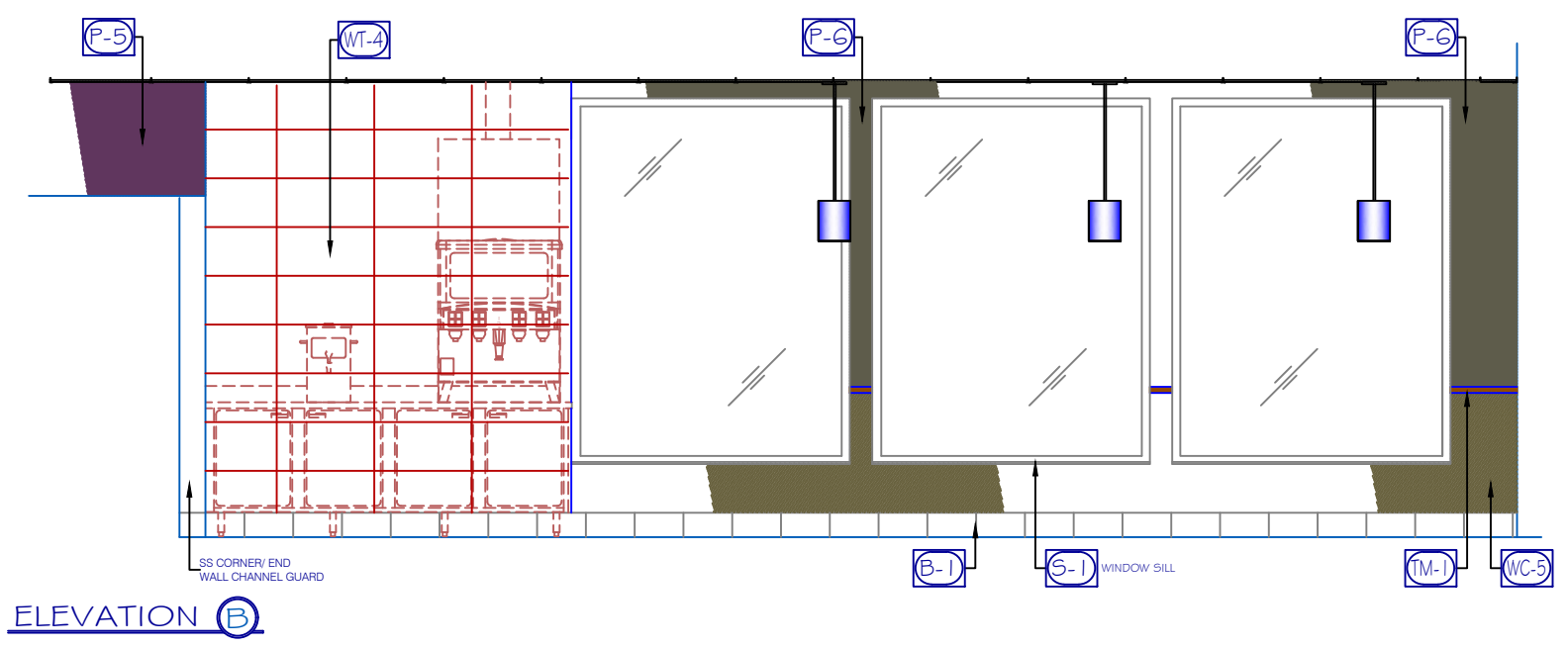
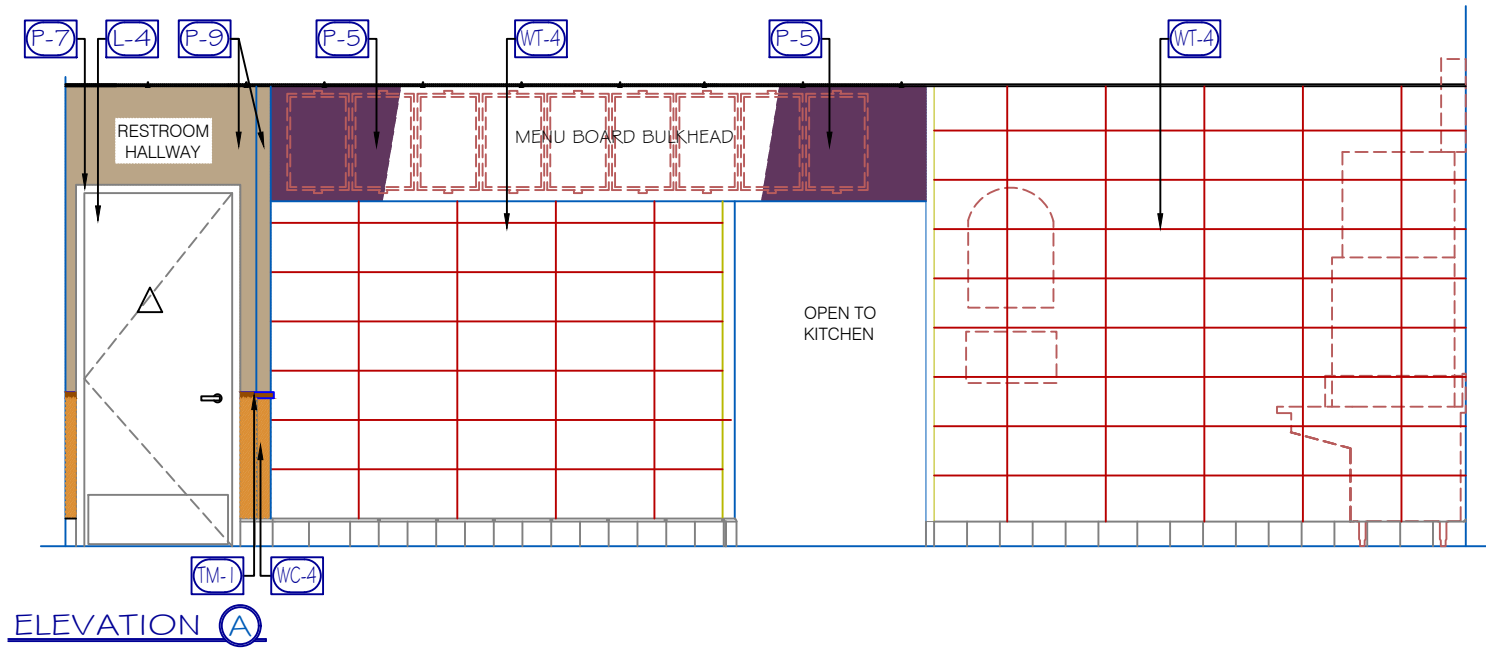
SHEET TITLE: LOW WALLS  
SCALE: 1/4" = 1'-0"  
ADDRESS: Freeport Road  
Natrona Heights, PA



ACCOUNT: TB  
DESIGN BY: Henry  
DATE: 5/4/17  
PROJECT NO.: LW 02734  
REVISION: 00 SHEET NO.: 4



Commercial Millwork & Installation LLC.  
356 Industrial Road - Newport, TN 37821



UNLESS OTHERWISE SPECIFIED

- L-1** MATL: WILSONART LAMINATE  
COLOR: LODEN ZEPHYR
- L-2** MATL: WILSONART LAMINATE  
COLOR: SPICED ZEPHYR
- L-4** FINISH: NEVAMAR  
COLOR: CARMEL SAGAWOOD
- L-5** MATL: WILSONART LAMINATE  
COLOR: ANTIQUE BRUSH

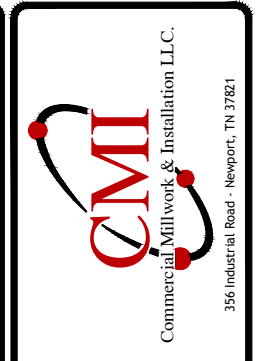
- L-6** MATL: NEVAMAR MR5004T  
COLOR: SHALE GREEN MATRIX
- S-1** MATL: WILSONART SOLID SURFACE  
COLOR: AVALANCHE MELANGE
- WC-4** MATL: FORBO MARMOLEUM  
COLOR: 3141 HIMALAYA
- WC-5** MATL: FORBO MARMOLEUM WALTON  
COLOR: 173 PAVING

- TM-1** WOOD STAIN  
COLOR: TO MATCH DALEY'S #45
- P-1** DISTRIBUTOR: SHERWIN WILLIAMS  
COLOR: SW7069 IRON ORE (DK. GREY)
- P-5** DISTRIBUTOR: SHERWIN WILLIAMS  
COLOR: SW6839 KIMONO VIOLET
- P-6** DISTRIBUTOR: SHERWIN WILLIAMS  
COLOR: SW6167 GARDEN GATE

- P-7** DISTRIBUTOR: SHERWIN WILLIAMS  
COLOR: SW7069 IRON ORE (GLOSS)
- P-8** DISTRIBUTOR: SHERWIN WILLIAMS  
COLOR: SW6116 TATAMI TAN
- P-9** DISTRIBUTOR: SHERWIN WILLIAMS  
COLOR: SW6108 LATTE
- P-13** DISTRIBUTOR: SHERWIN WILLIAMS  
COLOR: SW7008 ALABASTER WHITE

- WT-2** MATL: DAL TILE  
COLOR: SOLEIL LINEN #F687 - 12"X12"
- WT-4** MATL: DAL TILE  
COLOR: SOLEIL LINEN #F687 - 12"X24"
- WT-5** MATL: DAL TILE  
COLOR: SOLEIL LINEN #F687 - 3-1/2" X 12"
- B-1** MATL: (BASE TILE) DAL TILE TERRA ANTIQUA  
COLOR: ROSSO TA-02 - 6"X12" COVE BASE

CITY, ST **Natrona Heights, PA** STORE No.:



REVISION	DATE	BY

SHEET TITLE: ELEVATIONS  
SCALE: 1/4" = 1'-0"  
ADDRESS: Freeport Road  
Natrona Heights, PA

ACCOUNT: TB  
DESIGN BY: Henry  
DATE: 5/4/17  
PROJECT NO.: E1\_02734  
REVISION: 00 SHEET NO.: 5

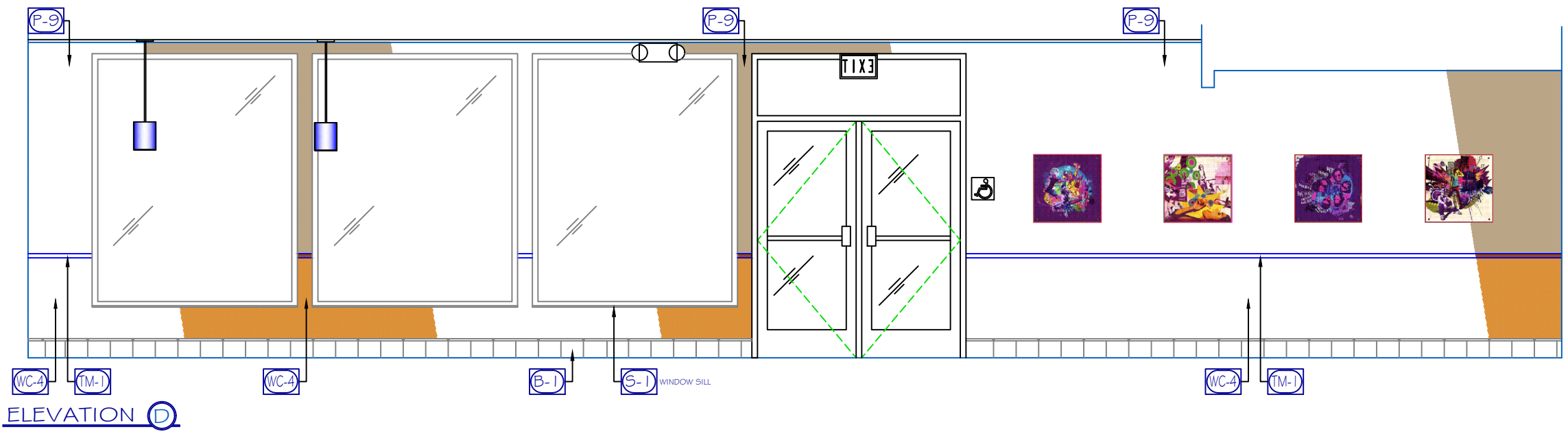
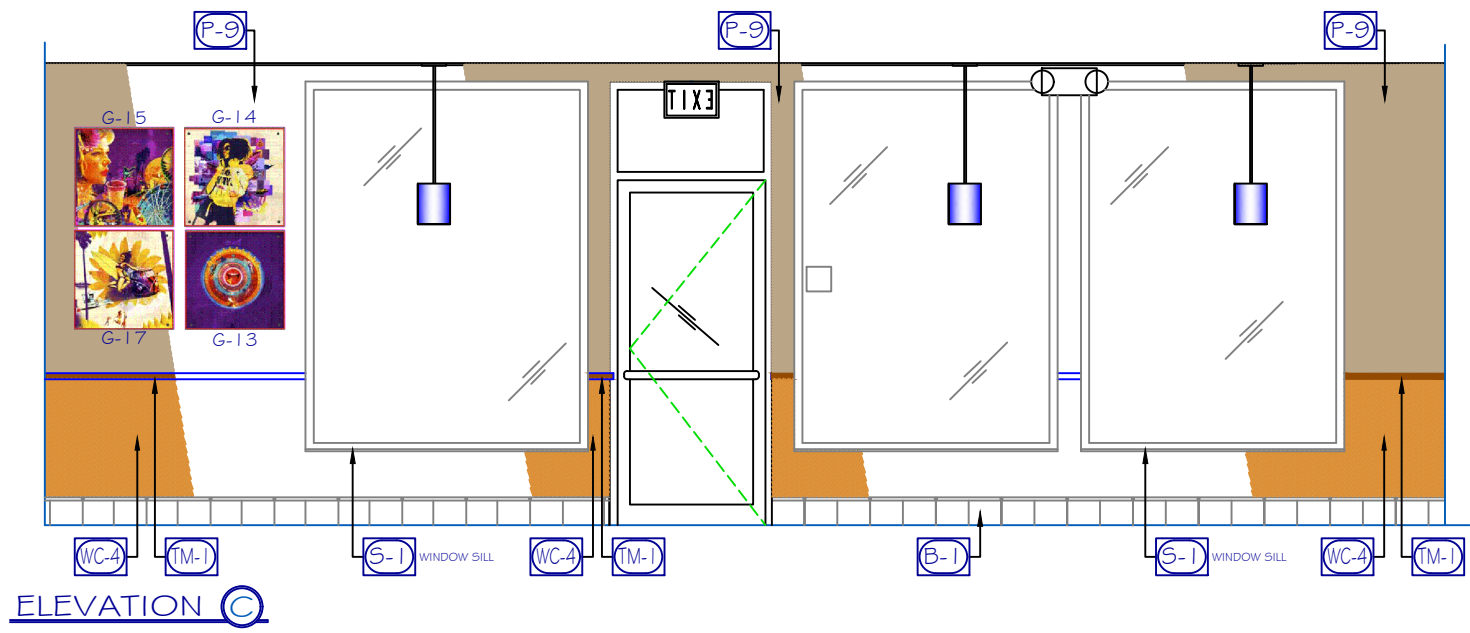
E

D

C

B

A



UNLESS OTHERWISE SPECIFIED

- (L-1)** MATL: WILSONART LAMINATE  
COLOR: LODEN ZEPHYR
- (L-2)** MATL: WILSONART LAMINATE  
COLOR: SPICED ZEPHYR
- (L-4)** FINISH: NEVAMAR  
COLOR: CARMEL SAGAWOOD
- (L-5)** MATL: WILSONART LAMINATE  
COLOR: ANTIQUE BRUSH

- (L-6)** MATL: NEVAMAR MR5004T  
COLOR: SHALE GREEN MATRIX
- (S-1)** MATL: WILSONART SOLID SURFACE  
COLOR: AVALANCHE MELANGE
- (WC-4)** MATL: FORBO MARMOLEUM  
COLOR: 3141 HIMALAYA
- (WC-5)** MATL: FORBO MARMOLEUM WALTON  
COLOR: 173 PAVING

- (TM-1)** WOOD STAIN  
COLOR: TO MATCH DALEY'S #45
- (P-1)** DISTRIBUTOR: SHERWIN WILLIAMS  
COLOR: SW7069 IRON ORE (DK. GREY)
- (P-5)** DISTRIBUTOR: SHERWIN WILLIAMS  
COLOR: SW6839 KIMONO VIOLET
- (P-6)** DISTRIBUTOR: SHERWIN WILLIAMS  
COLOR: SW6167 GARDEN GATE

- (P-7)** DISTRIBUTOR: SHERWIN WILLIAMS  
COLOR: SW7069 IRON ORE (GLOSS)
- (P-8)** DISTRIBUTOR: SHERWIN WILLIAMS  
COLOR: SW6116 TATAMI TAN
- (P-9)** DISTRIBUTOR: SHERWIN WILLIAMS  
COLOR: SW6108 LATTE
- (P-13)** DISTRIBUTOR: SHERWIN WILLIAMS  
COLOR: SW7008 ALABASTER WHITE

- (WT-2)** MATL: DAL TILE  
COLOR: SOLEIL LINEN #F687 - 12"X12"
- (WT-4)** MATL: DAL TILE  
COLOR: SOLEIL LINEN #F687 - 12"X24"
- (WT-5)** MATL: DAL TILE  
COLOR: SOLEIL LINEN #F687 - 3-1/2" X 12"
- (B-1)** MATL: (BASE TILE) DAL TILE TERRA ANTIQUA  
COLOR: ROSSO TA-02 - 6"X12" COVE BASE

STORE No.:

**Natrona Heights, PA**

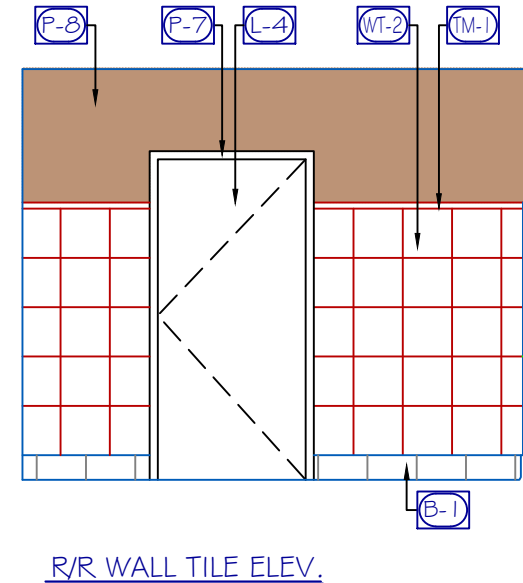
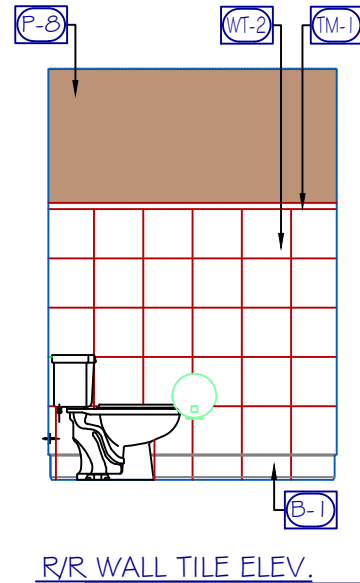
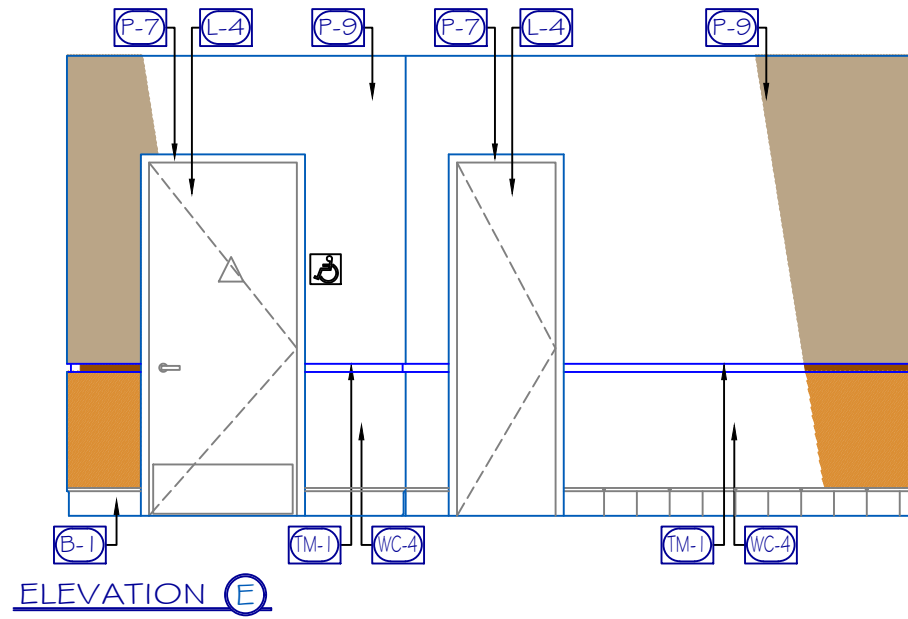
CITY, ST

REVISION	DATE	BY

SHEET TITLE: ELEVATIONS  
SCALE: 1/4" = 1'-0"  
ADDRESS: Freeport Road  
Natrona Heights, PA



ACCOUNT: TB  
DESIGN BY: Henry  
DATE: 5/4/17  
PROJECT NO.: E2\_02734  
REVISION: 00 SHEET NO.: 6



UNLESS OTHERWISE SPECIFIED

- L-1** MATL: WILSONART LAMINATE  
COLOR: LODEN ZEPHYR
- L-2** MATL: WILSONART LAMINATE  
COLOR: SPICED ZEPHYR
- L-4** FINISH: NEVAMAR  
COLOR: CARMEL SAGAWOOD
- L-5** MATL: WILSONART LAMINATE  
COLOR: ANTIQUE BRUSH

- L-6** MATL: NEVAMAR MR5004T  
COLOR: SHALE GREEN MATRIX
- S-1** MATL: WILSONART SOLID SURFACE  
COLOR: AVALANCHE MELANGE
- WC-4** MATL: FORBO MARMOLEUM  
COLOR: 3141 HIMALAYA
- WC-5** MATL: FORBO MARMOLEUM WALTON  
COLOR: 173 PAVING

- TM-1** WOOD STAIN  
COLOR: TO MATCH DALEY'S #45
- P-1** DISTRIBUTOR: SHERWIN WILLIAMS  
COLOR: SW7069 IRON ORE (DK. GREY)
- P-5** DISTRIBUTOR: SHERWIN WILLIAMS  
COLOR: SW6839 KIMONO VIOLET
- P-6** DISTRIBUTOR: SHERWIN WILLIAMS  
COLOR: SW6167 GARDEN GATE

- P-7** DISTRIBUTOR: SHERWIN WILLIAMS  
COLOR: SW7069 IRON ORE (GLOSS)
- P-8** DISTRIBUTOR: SHERWIN WILLIAMS  
COLOR: SW6116 TATAMI TAN
- P-9** DISTRIBUTOR: SHERWIN WILLIAMS  
COLOR: SW6108 LATTE
- P-13** DISTRIBUTOR: SHERWIN WILLIAMS  
COLOR: SW7008 ALABASTER WHITE

- WT-2** MATL: DAL TILE  
COLOR: SOLEIL LINEN #F687 - 12"X12"
- WT-4** MATL: DAL TILE  
COLOR: SOLEIL LINEN #F687 - 12"X24"
- WT-5** MATL: DAL TILE  
COLOR: SOLEIL LINEN #F687 - 3-1/2" X 12"
- B-1** MATL: (BASE TILE) DAL TILE TERRA ANTIQUA  
COLOR: ROSSO TA-02 - 6"X12" COVE BASE


STORE No.:

**Natrona Heights, PA**

CITY, ST

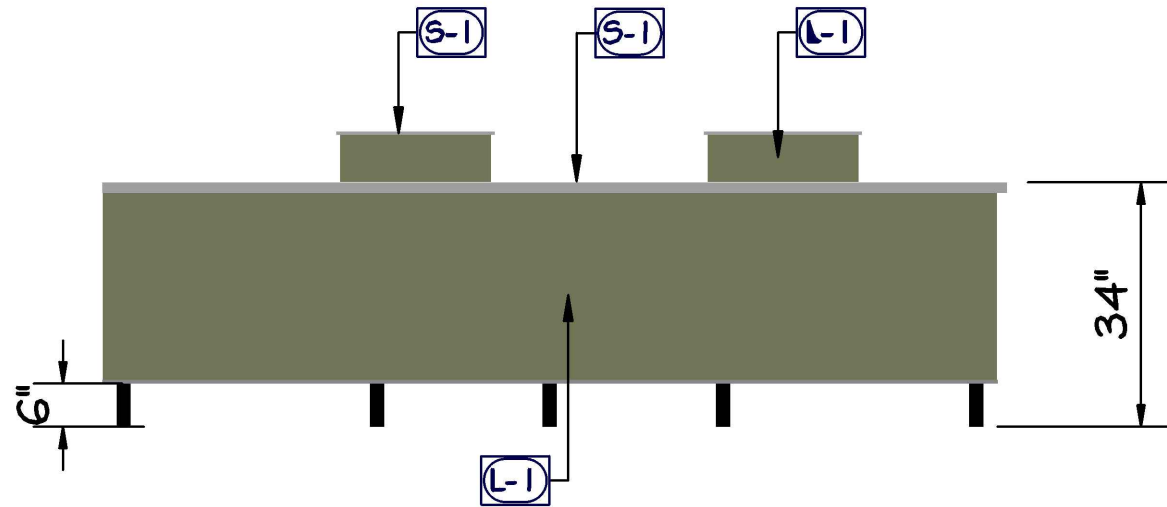
REVISION	DATE	BY

SHEET TITLE: ELEVATIONS  
SCALE: 1/4" = 1'-0"  
ADDRESS: Freeport Road  
Natrona Heights, PA



ACCOUNT: TB  
DESIGN BY: Henry  
DATE: 5/4/17  
PROJECT NO.: **E3\_02734**  
REVISION: 00 SHEET NO.: 7





FSC DETAIL

UNLESS OTHERWISE SPECIFIED

(L-1) MATL: WILSONART LAMINATE  
COLOR: LODEN ZEPHYR

(L-2) MATL: WILSONART LAMINATE  
COLOR: SPICED ZEPHYR

(L-4) FINISH: NEVAMAR  
COLOR: CARMEL SAGAWOOD

(L-5) MATL: WILSONART LAMINATE  
COLOR: ANTIQUE BRUSH

(L-6) MATL: NEVAMAR MR5004T  
COLOR: SHALE GREEN MATRIX

(S-1) MATL: WILSONART SOLID SURFACE  
COLOR: AVALANCHE MELANGE

(WC-4) MATL: FORBO MARMOLEUM  
COLOR: 3141 HIMALAYA

(WC-5) MATL: FORBO MARMOLEUM WALTON  
COLOR: 173 PAVING

(TM-1) WOOD STAIN  
COLOR: TO MATCH DALEY'S #45

(P-1) DISTRIBUTOR: SHERWIN WILLIAMS  
COLOR: SW7069 IRON ORE (DK. GREY)

(P-5) DISTRIBUTOR: SHERWIN WILLIAMS  
COLOR: SW6839 KIMONO VIOLET

(P-6) DISTRIBUTOR: SHERWIN WILLIAMS  
COLOR: SW6167 GARDEN GATE

(P-7) DISTRIBUTOR: SHERWIN WILLIAMS  
COLOR: SW7069 IRON ORE (GLOSS)

(P-8) DISTRIBUTOR: SHERWIN WILLIAMS  
COLOR: SW6116 TATAMI TAN

(P-9) DISTRIBUTOR: SHERWIN WILLIAMS  
COLOR: SW6108 LATTE

(P-13) DISTRIBUTOR: SHERWIN WILLIAMS  
COLOR: SW7008 ALABASTER WHITE

(WT-2) MATL: DAL TILE  
COLOR: SOLEIL LINEN #F687 - 12"X12"

(WT-4) MATL: DAL TILE  
COLOR: SOLEIL LINEN #F687 - 12"X24"

(WT-5) MATL: DAL TILE  
COLOR: SOLEIL LINEN #F687 - 3-1/2" X 12"

(B-1) MATL: (BASE TILE) DAL TILE TERRA ANTIQUA  
COLOR: ROSSO TA-02 - 6"X12" COVE BASE

STORE No.:

**Natrona Heights, PA**

CITY, ST

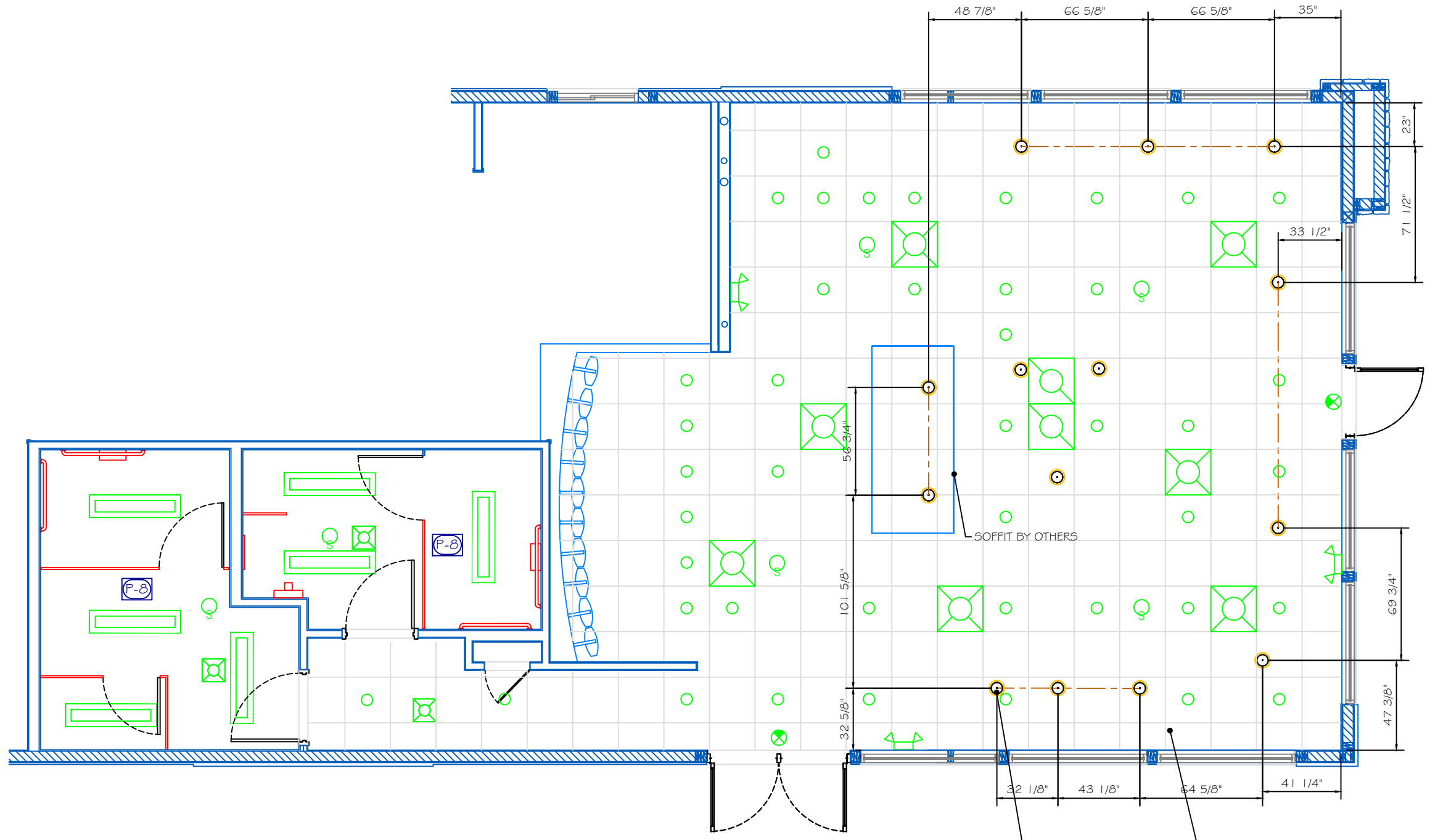


REVISION	DATE	BY

SHEET TITLE: DETAILS  
SCALE: 3/8" = 1'-0"  
ADDRESS: Freeport Road  
Natrona Heights, PA



ACCOUNT: TB  
DESIGN BY: Henry  
DATE: 5/4/17  
PROJECT NO.: **D\_02734**  
REVISION: 00 SHEET NO.: 8



**NOTES:**  
 BUILDING DIMENSIONS SUBJECT TO VERIFICATION.

LIGHTING SUPPLIED BY OWNER.  
 ALL PENDANT LIGHTS TO BE CENTERED OVER TABLE TOPS.  
 SEE FLOORPLAN FOR PLACEMENT OF TABLE TOPS.

PENDANTS TO BE 72" FROM FLOOR TO BOTTOM OF PENDANT FIXTURE.

PENDANT LIGHT (ØX)  
 LBL H55 I 80APBL  
 APRICOT GLASS

CEILING TILE (24X24)  
 USG - FROST 414  
 205 FLAT BLACK

STORE No.:

**Natrona Heights, PA**

CITY, ST

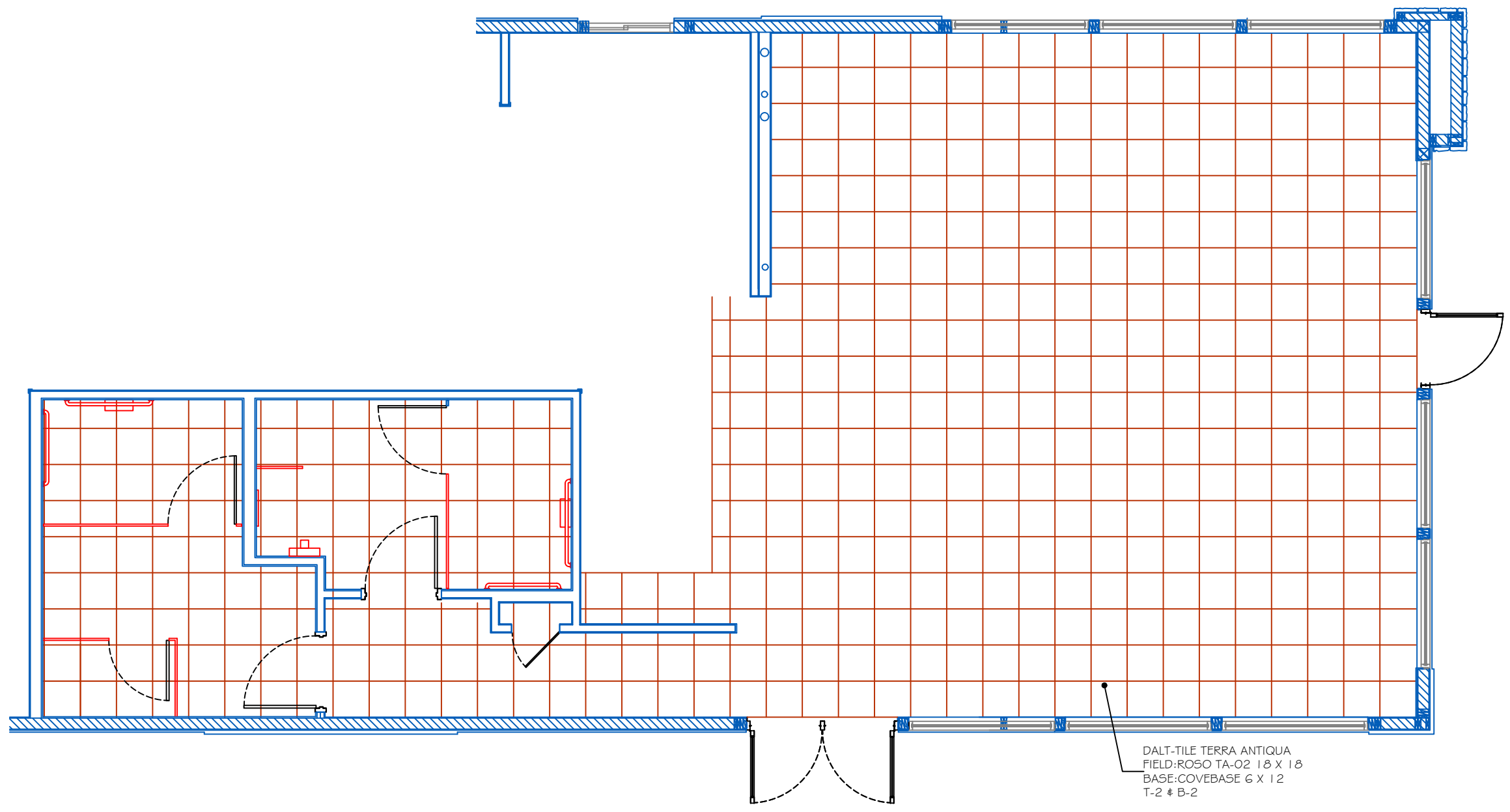
REVISION	DATE	BY

SHEET TITLE: REFLECTED CEILING PLAN  
 SCALE: 3/16" = 1'-0"  
 ADDRESS: Freeport Road  
 Natrona Heights, PA

**TACO BELL**

ACCOUNT: TB  
 DESIGN BY: Henry  
 DATE: 5/4/17  
 PROJECT NO.: RCP\_02734  
 REVISION: 00 SHEET NO.: 9

**CMI**  
 Commercial Millwork & Installation L.L.C.  
 356 Industrial Road - Newport, TN 37821



DALT-TILE TERRA ANTIQUA  
 FIELD:ROSO TA-02 18 X 18  
 BASE:COVEBASE 6 X 12  
 T-2 # B-2

STORE No.:

**Natrona Heights, PA**

CITY, ST

REVISION	DATE	BY

SHEET TITLE: FLOOR TILE PLAN  
 SCALE: 3/16" = 1'-0"  
 ADDRESS: Freeport Road  
 Natrona Heights, PA

**TACO BELL**  
 ACCOUNT: TB  
 DESIGN BY: Henry  
 DATE: 5/4/17  
 PROJECT NO.: **FTP\_02734**  
 REVISION: 00 SHEET NO.: 10



**TB - DECOR SPECIFICATIONS**

**GENERAL NOTE:** IT IS THE RESPONSIBILITY OF THE GENERAL CONTRACTOR ("GC") TO REVIEW ALL "GC" FINISHES AND DETAILS CONTAINED WITHIN THIS SET OF DÉCOR DRAWINGS WITH THE FINAL CUSTOMER. CMI HAS PROVIDED THE FINISH SCHEDULE AND DETAILS AS A SERVICE TO THE CUSTOMER, BUT WILL NOT BE HELD ACCOUNTABLE FOR ANY "GC" SUPPLIED AND INSTALLED ITEMS. THE "GC" SHOULD REVIEW THESE DRAWINGS WITH SAMPLE FINISHES THEY HAVE ACQUIRED FROM THEIR SUPPLIERS TO VERIFY THEY MEET THE CUSTOMER'S EXPECTATIONS. CMI WILL BE HAPPY TO ASSIST IN MAKING ANY CHANGES TO THE DRAWINGS/"GC" FINISH SPECIFICATIONS THAT ARE REQUIRED.

**INTERIOR FINISHES**

**PROVIDED BY**

**TABLE TOP:**  
SERIES: VINYL EDGE  
FINISH: WILSONART - LODEN ZEPHYR # 4844-60  
VINYL EDGE: #1 BLACK

**CMI**

**TABLE BASE:**  
STANDARD AND BARSTOOL HEIGHT  
SERIES: COREDRILLED  
FINISH: R100 BLACK WRINKLE

**CMI**

**CHAIRS / BAR HEIGHT (FREESTANDING):**  
- CHAIR SERIES: MTS #6-SQ-A10162  
SEAT: BEECHWOOD SHELL W/ CUSTOM STAIN  
FRAME: STEEL  
FRAME FINISH: POWDERCOAT SILVER

**CMI**

- BAR HEIGHT CHAIR BACKLESS SERIES: MTS #N6-SQL-TB  
SEAT: BEECHWOOD SHELL W/ CUSTOM STAIN  
UPHOLSTERY FINISH: STEEL  
FRAME FINISH: STEEL - POWDERCOAT SILVER

**CMI**

- STOOL SERIES: (BELL STOOL) UPH. ROUND W/ METAL FRAME  
SEAT: UPHOLSTERED  
UPHOLSTERY MFR: THE SYMPHONY COLLECTION  
SERIES: CLASSIC COLOR  
UPH. COLOR: SAFFRON  
FRAME STEEL FINISH: POWDERCOAT SILVER

**N/A**

- BARSTOOL SERIES: MTS - BACKLESS BARSTOOL  
SEAT: UPHOLSTERED 2" SQUARE BOX STYLE PADDED SEAT  
UPHOLSTERY MFR: THE SYMPHONY COLLECTION  
SERIES: CLASSIC COLOR  
UPH. 'A' COLOR: GRAPE - (MTS #TB 919-30-A)  
UPH. 'B' COLOR: SAFFRON - (MTS #TB 919-30-B)  
FRAME STEEL FINISH: POWDERCOAT SILVER

**N/A**

**INTERIOR FINISHES CONTINUED**

**PROVIDED BY**

**BOOTHS:**  
- OPEN BACK SERIES: UPHOLSTERED BOOTH - W/ POWDER  
COATED STEEL FRAME AND LEGS.

**CMI**

SEAT AND BACK: UPHOLSTERED  
UPH. MFR: THE SYMPHONY COLLECTION  
SERIES: CLASSIC COLOR  
UPH. SEAT COLOR: GRAPE  
UPH. BACK COLOR: SAFFRON

FRAME FINISH: POWDER COAT SILVER GLOSS - RAL#9007

**SERVICE COUNTER:**  
DESCRIPTION: KNEE WALL W/ LAMINATED FASCIA AND SOLID SURFACE  
COUNTER TOP.

**CMI**

TOP AND DROP DOWN SIDES: WILSONART #9175ML AVALANCHE MELANGE  
FASCIA FINISH: WILSONART #4844-60 LODEN ZEPHYR

**DRINK CABINET:**  
TO BE DETERMINED

**OWNER**

**CONDIMENT CABINET:**  
SERIES: YUM TB INNOVATION  
DESCRIPTION: CABINET WITH SOLID SURFACE TOP, NAPKIN DISPENSERS AND  
BLACK PLASTIC CROCKS  
TOP FINISH: WILSONART #9175ML - AVALANCHE MELANGE  
CABINET FINISH: WILSONART #4844-60 - LODEN ZEPHYR  
DOOR FINISH: WILSONART #4844-60 - LODEN ZEPHYR  
REQUIREMENTS:  
(2) BLACK PLASTIC ROUND CROCK (CAMBRO #CP12)  
(1) TRASH RING - STAINLESS STEEL (UFPC #E05205580)  
(5) 1/6 X 6" D. BLACK PLASTIC PANS (CAMBRO #66CW)  
(4) 1/9 X 4" D. BLACK PLASTIC PAN W/ DIVIDER (CAMBRO #94CW)  
(2) BUILT-IN NAPKIN DISPENSERS (DISPENSE-RITE #CMND-1)  
(1) RUBBERMAID WASTE BASKET #2956 LARGE BLACK  
SUPPORT: 6" ADJUSTABLE STAINLESS STEEL LEGS

**CMI**

**DRIVE THRU - CABINETS:**  
TO BE DETERMINED

**OWNER**

**WASTE CABINET:**  
SERIES: YUM TB INNOVATION (SINGLE & DOUBLE)  
DESCRIPTION: TOP DROP WASTE CABINET W/ SOLID SURFACE TOP AND  
FIBERGLASS CHUTES & 10" WIDE RAISED SHELF  
SIZE: 46.75 H. X 21" D.  
A) TOP FINISH: WILSONART #9175ML AVALANCHE MELANGE  
B) RAISED SHELF FINISH: WILSONART #4170-60 BEIGE PAMPAS  
C) CABINET & DOOR FINISH: WILSONART #10745-60 FONTHILL PEAR  
D) BASE FINISH: TIGER DRYLAC BLACK SMOOTH GLOSSY #49-81950 RAL/9004  
TOP CHUTE (FIBERGLASS): BLACK

**CMI**

**PARTITION WALL:**  
MATL: NEVAMAR MR5004T  
COLOR: SHALE GREEN MATRIX  
SIZE: 42 X 84

**CMI**

**INTERIOR FINISHES CONTINUED**

**PROVIDED BY**

**DIVIDER WALL (BELLS):**  
DESCRIPTION: 5" THICK DIVIDER WALL W/ COUNTER AND SOLID SURFACE TOP  
CAP.  
WALL HEIGHT: 48" OVERALL HEIGHT  
WALL (OUTTER) FINISH: WILSONART # 4844-60 LODEN ZEPHYR  
WALL (INNER CENTER) FINISH: WILSONART # D14-60 PORT  
TOP CAP FINISH: WILSONART #9175ML AVALANCHE MELANGE  
COUNTER FINISH: WILSONART #4170-60 BEIGE PAMPAS  
SUPPORT: COREDRILLED 6" A.F.F.

**CMI**

**DINING ROOM PAINT "P1":**  
MFR: SHERWIN WILLIAMS SATIN/EGGSHELL LATEX  
COLOR: SW7069 IRON ORE (DK GREY)  
LOCATION: CEILING CL1

**G.C.**

**DINING ROOM PAINT "P5":**  
MFR: SHERWIN WILLIAMS SATIN/EGGSHELL LATEX  
COLOR: SW6839 KIMONO ( PRUPLE )  
LOCATION: MENU BOARD BULKHEAD

**G.C.**

**DINING ROOM PAINT "P6":**  
MFR: SHERWIN WILLIAMS SATIN/EGGSHELL ENAMEL  
COLOR: SW6167 GARDEN GATE  
LOCATION: PERIMETER WALL ONLY BY DRINK CABINET SIDE

**G.C.**

**DINING ROOM PAINT "P7":**  
MFR: SHERWIN WILLIAMS GLOSS FINISH ENAMEL  
COLOR: SW7069 IRON ORE (DK GREY)  
LOCATION: DOOR FRAMES

**G.C.**

**DINING ROOM PAINT "P8":**  
MFR: SHERWIN WILLIAMS SATIN/EGGSHELL ENAMEL  
COLOR: SW6116 TATAMI TAN  
LOCATION: RESTROOM CEILING AND UPPER WALL

**G.C.**

**DINING ROOM PAINT "P9":**  
MFR: SHERWIN WILLIAMS SATIN/EGGSHELL ENAMEL  
COLOR: SW6108 LATTE  
LOCATION: FRONT, SIDE ENTRY AND BACK WALLS

**G.C.**

**DINING ROOM PAINT "P13":**  
MFR: SHERWIN WILLIAMS SEMI-GLOSS  
COLOR: SW7008 ALABASTER WHITE  
LOCATION: SOFFITS

**G.C.**

**WAINSCOTING "WC-4":**  
MARMOLEUM 3141 HIMALAYA  
LOCATION: FRONT, SIDE ENTRY AND BACK WALLS  
NOTE:  
TRIM AND J MOLDING TO MATCH RAL 8023.

**CMI**

**WAINSCOTING "WC-5":**  
WALTON UNI 173 PAVING  
LOCATION: PERIMETER WALL ONLY BY DRINK CABINET SIDE  
NOTE:  
TRIM AND J MOLDING TO MATCH RAL 5007.

**CMI**

STORE No.:

**Natrona Heights, PA**



Table with columns: REVISION, DATE, BY. Contains a grid for tracking changes.

SHEET TITLE: SPECIFICATIONS  
SCALE: N.T.S.  
ADDRESS: Freeport Road  
Natrona Heights, PA



ACCOUNT: TB  
DESIGN BY: Henry  
DATE: 5/4/17  
PROJECT NO.: SPECS 02734  
REVISION: 00 SHEET NO.: 11

**TB - DECOR SPECIFICATIONS**

**INTERIOR FINISHES CONTINUED**

**PROVIDED BY**

**CHAIR RAIL "TM-1":** CMI  
 DESCRIPTION: 2" x 3/4" SOLID MAPLE - 37-1/2" A.F.F. TO TOP  
 FINISH:T.B. FINISH TAG #287311  
 NOTE:  
 RABBET FOR WAINSCOT AND WITH 1/4" RADIUS TOP & BOTTOM CORNERS.

**WINDOW SILLS "S-1":** CMI  
 SOLID SURFACE - WILSONART #9175ML 'AVALANCHE MELANGE'

**INTERIOR DOORS:** G.C.  
 DOOR: LAMINATED - NEVAMAR CARMEL SAGAWOOD WM8350T W/ 10" S.S. KICK PLATE (BOTH SIDES)  
 FRAME: SHERWIN WILLIAMS SW7069 'IRON ORE' (GLOSS)

**ARTWORK SCHEDULE**

**PROVIDED BY**

**ARTWORK:** OWNER  
 TO BE DETERMINED

**RESTROOM ADA SIGN:** G.C.  
 DESCRIPTION: ARCH GREY PLAQUE WITH WHITE INTERNATIONAL SIGNAGE ON SOLID SURFACE BACKGROUND  
 SOLID SURFACE: WILSONART SOLID SURFACE OLIVE FRESCO 9059CC

SIGN: 'MEN' (TRIANGLE)  
**RESTROOM ADA SIGN:** G.C.  
 DESCRIPTION: ARCH GREY PLAQUE WITH WHITE INTERNATIONAL SIGNAGE ON SOLID SURFACE BACKGROUND  
 SOLID SURFACE: WILSONART SOLID SURFACE OLIVE FRESCO 9059CC  
 SIGN: 'WOMEN' (CIRCLE)

**RESTROOM ADA SIGN:** G.C.  
 DESCRIPTION: ARCH GREY PLAQUE WITH WHITE INTERNATIONAL SIGNAGE ON SOLID SURFACE BACKGROUND  
 SOLID SURFACE: WILSONART SOLID SURFACE OLIVE FRESCO 9059CC  
 SIGN: 'RESTROOM'

**TILE WORK**

**PROVIDED BY**

**FLOOR AND BASE TILE:** G.C.  
 MFR: DAL TILE - TERRA ANTIQUA CERAMIC TILE  
 COLOR: ROSSO TA-02  
 FIELD TILE: 18" X 18" OR 12"X 12"  
 BASE TILE: 6" X 12" - TERRA ANTIQUA - ROSSO TA-02  
 GROUT: CUSTOM #95 SABLE BROWN

**BEHIND FSC / DRINK CABINET WALLS "WT-4":** G.C.  
 DAL TILE - FABRIQUE  
 FIELD TILE: 12" X 24" - SOLEIL LINEN #P687 (HORIZONTAL GRAIN)  
 GROUT: MAPEI #06 HARVEST

**DRINK CABINET WALLS "WT-5":** G.C.  
 DAL TILE - FABRIQUE  
 3" X 12" - BULLNOSE SOLEIL LINEN #P687 (VERTICAL APP. ONLY))  
 GROUT: MAPEI #06 HARVEST

**INTERIOR FINISHES CONTINUED**

**PROVIDED BY**

**RESTROOM WALL TILE / PAINT:** G.C.  
 DAL TILE - FABRIQUE  
 FIELD TILE: 12" X 12" - SOLEIL LINEN #P687 - UNPOLISHED  
 GROUT: MAPEI #06 HARVEST  
 PAINT: SHERWIN WILLIAMS SW6116 'TATAMI TAN'  
 SEMI GLOSS LATEX  
 (SEE WALL ELEVATION DETAIL)

**CEILING AND LIGHTING**

**PROVIDED BY**

**HVAC, FLUORESCENT FIXTURES, THERMOSTATS AND EXIT SIGNS:** G.C.  
 PER THE STANDARD ARCHITECTURAL SPECIFICATIONS.

**SUSPENDED CEILING TILE AND T-BAR GRID "CL-1":** G.C.  
 MFR: USG  
 TYPE: FROST 414 ( 24" X 24" )  
 COLOR 205 FLAT BLACK  
 GRID: ARMSTRONG PRELUDE XL  
 GRID TYPE: ARMSTRONG PRELUDE XL  
 GRID FINISH: TECH BLACK 15/16" EXPOSED TEE SYSTEM  
 LOCATION: DINING ROOM

**SUSPENDED CEILING TILE AND T-BAR GRID "CL-2":** G.C.  
 MFR: USG  
 TYPE: VINYL FACED, STIPPLE SHELL FIREDCODE  
 COLOR: WHITE  
 GRID: USG INT. INC. BY DONN # 272606-ZXA  
 GRID TYPE: ARMSTRONG PRELUDE XL  
 GRID FINISH: FLAT WHITE #050  
 LOCATION: KITCHEN

**PENDANT LIGHTS:** G.C.  
 PL-LBL-HS-5180-AP-BL-2D-60 (VERIFY)  
 FINISH: APRICOT WITH BLACK CORD

**TILE WORK CONTINUED**

**PROVIDED BY**

STORE No.:



REVISION	DATE	BY

SHEET TITLE: SPECIFICATIONS  
 SCALE: N.T.S.  
 ADDRESS: Freeport Road  
 Natrona Heights, PA



ACCOUNT: TB  
 DESIGN BY: Henry  
 DATE: 5/4/17  
 PROJECT NO.:  
**SPECS1\_02734**  
 REVISION: 00 SHEET NO.: 12

**Natrona Heights, PA**

CITY, ST