

**ROUGH OPENINGS ARE NOT NECESSARILY TO STUD. SEE DETAILS ON SHEET A6.1 FOR R.O. LOCATIONS.**

NOTE: MECHANICAL ACTIVATION FOR HOOD SUPPRESSION SYSTEM SHALL BE PROVIDED IN PATH OF EGRESS AND SHALL IDENTIFY HAZARD PROTECTED. MANUAL ACTUATION DEVICE SHALL BE LOCATED A MINIMUM OF 10 FEET AND A MAXIMUM OF 20 FEET FROM THE KITCHEN EXHAUST SYSTEM. MANUAL ACTUATION DEVICE SHALL BE MOUNTED BETWEEN 42 INCHES AND 48 INCHES ABOVE THE FINISHED FLOOR. IBC 904.12.1 NFPA 96, 10.5.1 ALTERNATE AGENT SUPPRESSION SYSTEMS SHALL COMPLY WITH IBC SECTION 904. NFPA 101 SECTION 9.7 AND EXECUTIVE REGULATION 19-13. SUBMIT PLANS FOR REVIEW AND OBTAIN A SEPARATE FIRE PROTECTION SYSTEM PERMIT PRIOR TO A NEW INSTALLATION OR ALTERATION. [COMMERCIAL COOKING SYSTEMS SHALL COMPLY WITH 904.12 AND MANUAL SYSTEMS SHALL COMPLY WITH 904.12.1]

WALK IN COOLER & FREEZER: IN NON SPRINKLERED BUILDING, FOAM PLASTIC HAVING A THICKNESS OF 4" OR LESS AND A MAXIMUM FLAME SPREAD INDEX OF 75 IS PERMITTED WHERE THE FLOOR AREA OF WALK-IN COOLER DOES NOT EXCEED 400 SQUARE FEET AND THE FOAM PLASTIC IS COVERED BY A METAL FACING NOT LESS THAN 0.032-INCH THICK ALUMINUM OR CORROSION RESISTANT STEEL HAVING A MINIMUM BASE METAL THICKNESS OF 0.016-INCH. PROVIDE DOCUMENTATION TO INSPECTOR THAT WALK-IN COOLER ASSEMBLY MEETS THE MINIMUM CHARACTERISTICS. IBC 2603.4.1.3

**FLOOR PLAN** 1/4"=1'-0" **A**

WALL LEGEND	
	TYPICAL EXTERIOR WALL: 2x6 WD STUDS AT 16" O.C. W/ SHEATHING AS SCHEDULED (SEE STRUCT. DWGS.) AND R-19 KRAFT-FACED FIBERGLASS BATT INSULATION U.O.N. GC SHALL PROVIDE 2 LAYERS OF GRADE 'D' 60 lb BUILDING PAPER.
	INTERIOR SOUND-RATED WALL: TYPICAL INTERIOR WALL W/ 3-1/2" UNFACED FIBERGLASS BATT INSULATION.
	TYPICAL INTERIOR WALL: 2x4 WD STUDS AT 16" O.C. (2x6 OR 2x8 WHERE NOTED.)
	HOODWALL: TYPICAL EXTERIOR WALL WITH 20 GA. S.S. PANEL BEHIND HOOD. REFER TO DETAIL 2/M3.0 FOR EXTENT OF S.S. PANEL.

WALL SUBSTRATES:  
 - DINING ROOM:  
 1/2" GYPSUM WALLBOARD FROM T.O. CURB TO 6" ABOVE CEILING HEIGHT U.O.N. SEE 6, 8 & 16 / A6.3. (NOTE: THE CEMENT BOARD SPECIFICATION IS DESIGNED TO ALLOW THE G.C. FLEXIBILITY.)  
 - KITCHEN WALLS AND DINING ROOM CLOSET:  
 1/2" CEMENT WALLBOARD FROM T.O. SLAB WITH 1/2" CDX PLYWOOD W/FRP SURFACE FINISH TO 6" ABOVE CEILING HEIGHT U.O.N. IF DOUBLE SIDED SHEAR WALL PLYWD IS SPECIFIED THE PLYWOOD SHALL BE CONTINUOUS FROM SILL PLATE TO TOP PLATE. SEE 4, 11 & 20 / A6.3.  
 - RESTROOM WALLS:  
 5/8" CEMENT WALLBOARD FROM T.O. SLAB OR T.O. CONCRETE CURB TO 48" A.F.F. WITH 5/8" HI-IMPACT BRAND XP WALLBOARD, TYPE X CORE FROM T.O. CEMENT BOARD TO 6" ABOVE CEILING HEIGHT U.O.N.. NO SUBSTITUTIONS ALLOWED. FINISH AS SCHEDULED. SEE 11 (SIM), 12 / A6.3.  
 - ALL OTHER FRAME WALL CONDITIONS:  
 1/2" CEMENT WALLBOARD FROM T.O. SLAB OR T.O. CONCRETE CURB TO 48" A.F.F., WITH 1/2" GYPSUM WALLBOARD FROM T.O. CEMENT BOARD TO 6" ABOVE CEILING HEIGHT U.O.N. FINISH AS SCHEDULED.

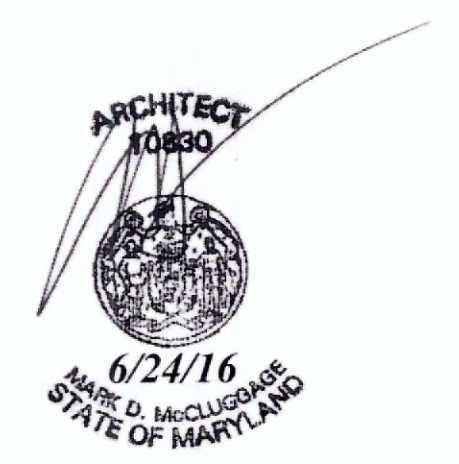
FLOOR PLAN NOTES	
<b>DIMENSIONS:</b>	A. ALL DIMENSIONS ARE TO FACE OF STUD U.O.N. REFER TO FOUNDATION PLAN FOR FACE OF CONC. DIMENSIONS. B. DIMENSIONS NOTED AS "CLEAR" OR "HOLD" ARE MIN. REQ'D. NET CLEARANCE FROM FACE OF WALL / WAINSCOT FINISH. VERIFY FINAL EQUIPMENT SIZES W/ VENDOR PRIOR TO INT. WALL FRAMING.
<b>WINDOWS / DOORS:</b>	A. SEE SHT. A1.1 FOR WINDOW TYPES AND DOOR SCHEDULE. B. ALL DOOR AND WINDOW OPENING DIMENSIONS ARE TO ROUGH OPENING.
<b>FINISH SUBSTRATES:</b>	A. PROVIDE 1/2" THICK CEMENTITIOUS BD. FROM FLOOR SLAB TO 12" A.F.F. MIN. IN LIEU OF GYP. BD. AT ALL WALLS EXCEPT SHEARWALL SURFACES, U.O.N. B. ALL JOINTS, GAPS OR SPACES LEADING TO ALL HOLLOW OR INACCESSIBLE SPACES SHALL BE SEALED WITH NSF INTERNATIONAL APPROVED SEALANTS. C. ALL BACK OF HOUSE AND OFFICE WALLS SHALL HAVE 1/2" CDX PLYWOOD SUBSTRATE, U.O.N.
<b>DECOR:</b>	A. SEE A2.0 FOR SEATING PLAN AND DETAILS. B. SEE A7.0 FOR FLOOR FINISHES. C. SEE A8.0 - A8.3 FOR WALL FINISHES. D. SEE A7.1 FOR CEILING FINISHES.
<b>GENERAL:</b>	A. PROVIDE FOUR FIRE EXTINGUISHERS - (2) 10 lb. BC and (1) 10 lb. ABC and (1) 10 lb. TYPE K - TO COMPLY WITH LOCAL FIRE CODE. LOCATE PER DIRECTION OF FIRE MARSHALL OR LOCAL AUTHORIZING AGENT. B. DRAWINGS ARE BASED UPON WOOD FRAMING. UTILIZATION OF METAL STUDS ON NON-BEARING INTERIOR PARTITIONS, BULKHEADS AND SOFFITS IS ACCEPTABLE. C. ALL ATTACHMENTS MADE THROUGH E.I.F.S. SHALL BE BUSHED TO PREVENT DAMAGE TO THE FINISH. PER 9/A6.2. D. ALL PENETRATIONS THROUGH E.I.F.S. SHALL BE SEALED USING MFRS. APPROVED METHOD.

1	STARTING POINT. ALL SUB-TRADES SHALL USE THIS POINT AS A BEGINNING LAY-OUT (INSIDE FACE OF EXT. WALL STUDS.)	15	START OF CHAIR RAIL.
2	NO FRP BEHIND (W-059) WALK-IN COOLER/FREEZER.	16	CONTINUE CHAIR RAIL AROUND CORNER TO WINDOW JAMB.
3	PIPE BOLLARD. SEE CIVIL DETAIL.	17	REMOVABLE MULLION FROM THE INSIDE.
4	HOOD WALL, SEE WALL LEGEND.	18	PROVIDE 5 1/2" METAL STUDS BEHIND HOOD AND 18" TO EACH SIDE
5	ELECTRICAL MAIN SWITCH BOARD. REFER TO ELECT. DWGS.	19	INDICATES WATER HEATER LOCATION. COMES WITH METAL STAND.
6	CO2 FILL BOX LOCATION. SEE 5/A6.2.	20	SPLASH GUARD. SEE DETAIL 9/A6.3. INSTALLATION SHALL BE COORDINATED WITH INSTALLATION OF MOP SINK.
7	TILE TO CONCRETE METAL THRESHOLD.	21	ROOF LADDER. SEE 7/A6.0.
8	KEEP CLEAR FOR UTILITIES & SYRUP LINES. SEE DETAIL 14 & 19/A6.4 FOR STUD LAYOUT REQUIREMENTS.	22	ADD SECOND 2X4 WALL ON KITCHEN SIDE.
9	MOP SINK. REFER TO SHEET A2.0 & A2.1.	23	CASED OPENING. REFER TO DETAIL 6/A6.4 DOOR OPTIONAL, REFER TO DOOR SCHEDULE ON A1.1. (DOOR #6).
10	S.S. CORNER GUARD / WALL CAP. TYP. ALL CORNERS IN BACK-OF-HOUSE FROM REAR WALL TO THE KITCHEN SIDE OF THE SERVICE COUNTER. SEE DETAIL 19/A6.3.	24	GAS SERVICE METER. SEE MECH. DRAWINGS.
11	ELECT. PANELS RECESSED IN 2x6 WALL.		
12	LIGHTING CONTROL PANEL SURFACE MOUNTED. REFER TO ELECT. DWGS.		
13	SYRUP LINE CHASE (ABOVE). SEE DETAIL 19/A6.4.		
14	14"x14" HORIZONTAL OPENING FOR SYRUP TUBES. COORDINATE WALL PENETRATION WITH COUNTER INSTALLER. SEAL CHASE TO COUNTER. SEE 11/A6.4.		

**KEY NOTES** **B**

**MARK D. MCCLURGAGE AIA, CCS**  
 1525 E. ...  
 ...  
 ...

PROFESSIONAL CERTIFICATION:  
 I HEREBY CERTIFY THAT THESE DOCUMENTS WERE PREPARED OR APPROVED BY ME, AND THAT I AM A DULY LICENSED PROFESSIONAL ARCHITECT UNDER THE LAWS OF THE STATE OF MARYLAND, LICENSE NUMBER 10830, EXPIRATION DATE: 08/19/2016.



15025.000

△	ADDRESS CHANGE
△	COUNTY COMMENTS 4/7/16
△	HEALTH DEPT COMMENTS 6/24/16
△	
△	
△	
△	
△	
△	

DATE: JULY 15, 2015  
 BUILDING TYPE: MED-40-MOD  
 PLAN VERSION: JUNE 2015  
 SITE NUMBER:  
 ENTITY NUMBER:

1300 HOLTON LANE  
 TAKOMA PARK, MD 20912



**FLOOR PLAN**

**A1.0**

PLOT DATE: 6-24-16

PROFESSIONAL CERTIFICATION:  
 I HEREBY CERTIFY THAT THESE DOCUMENTS WERE PREPARED OR APPROVED BY ME, AND THAT I AM A DULY LICENSED PROFESSIONAL ARCHITECT UNDER THE LAWS OF THE STATE OF MARYLAND, LICENSE NUMBER 10830 EXPIRATION DATE: 08/19/2016.



15025.000

▲ ADDRESS CHANGE  
 ▲ COUNTY COMMENTS 4/7/16  
 ▲ HEALTH DEPT COMMENTS 6/24/16  
 ▲  
 ▲  
 ▲  
 ▲  
 ▲  
 ▲

DATE: JULY 15, 2015  
 BUILDING TYPE: MED-40-MOD  
 PLAN VERSION: JUNE 2015  
 SITE NUMBER:  
 ENTITY NUMBER:

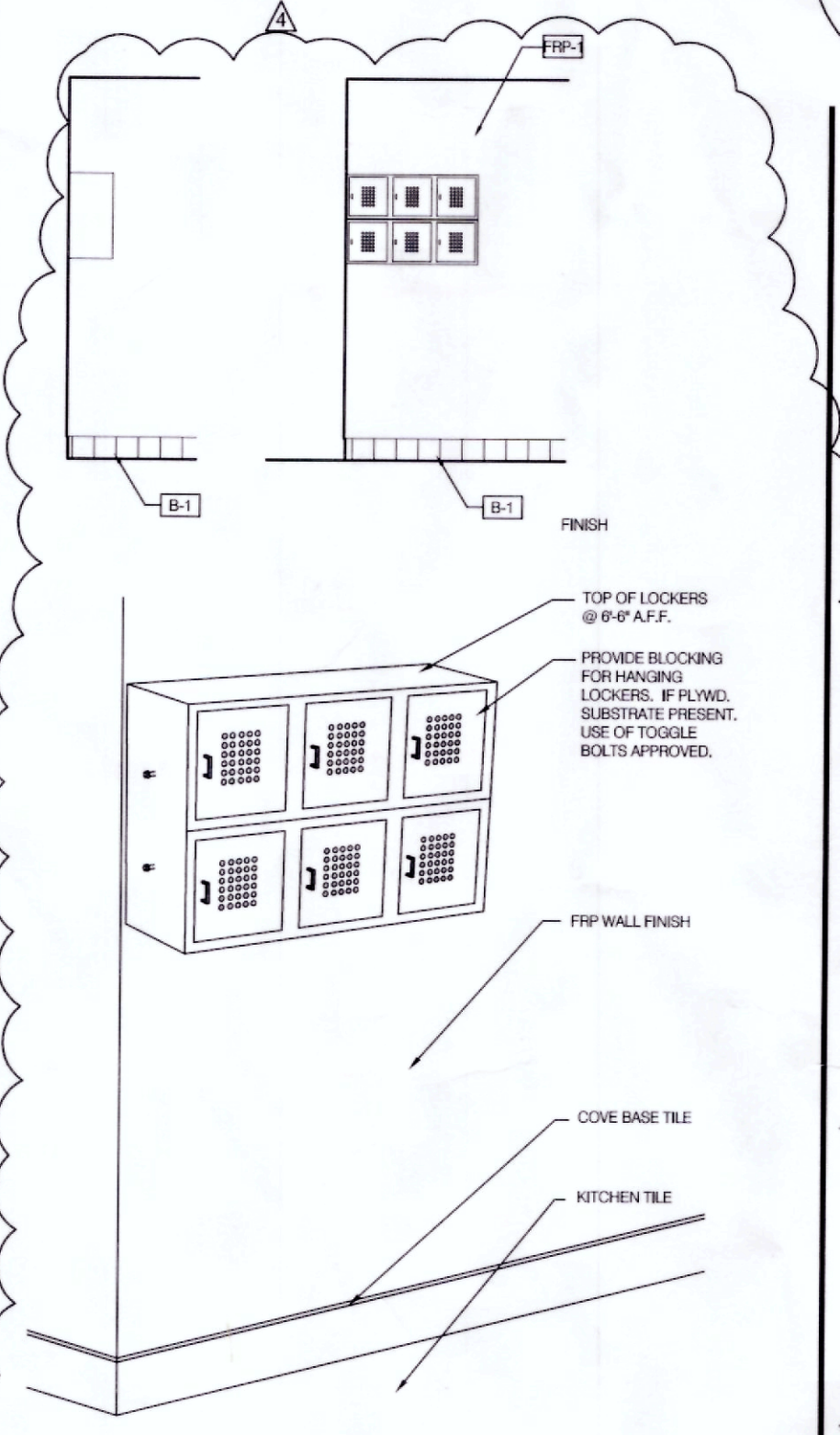
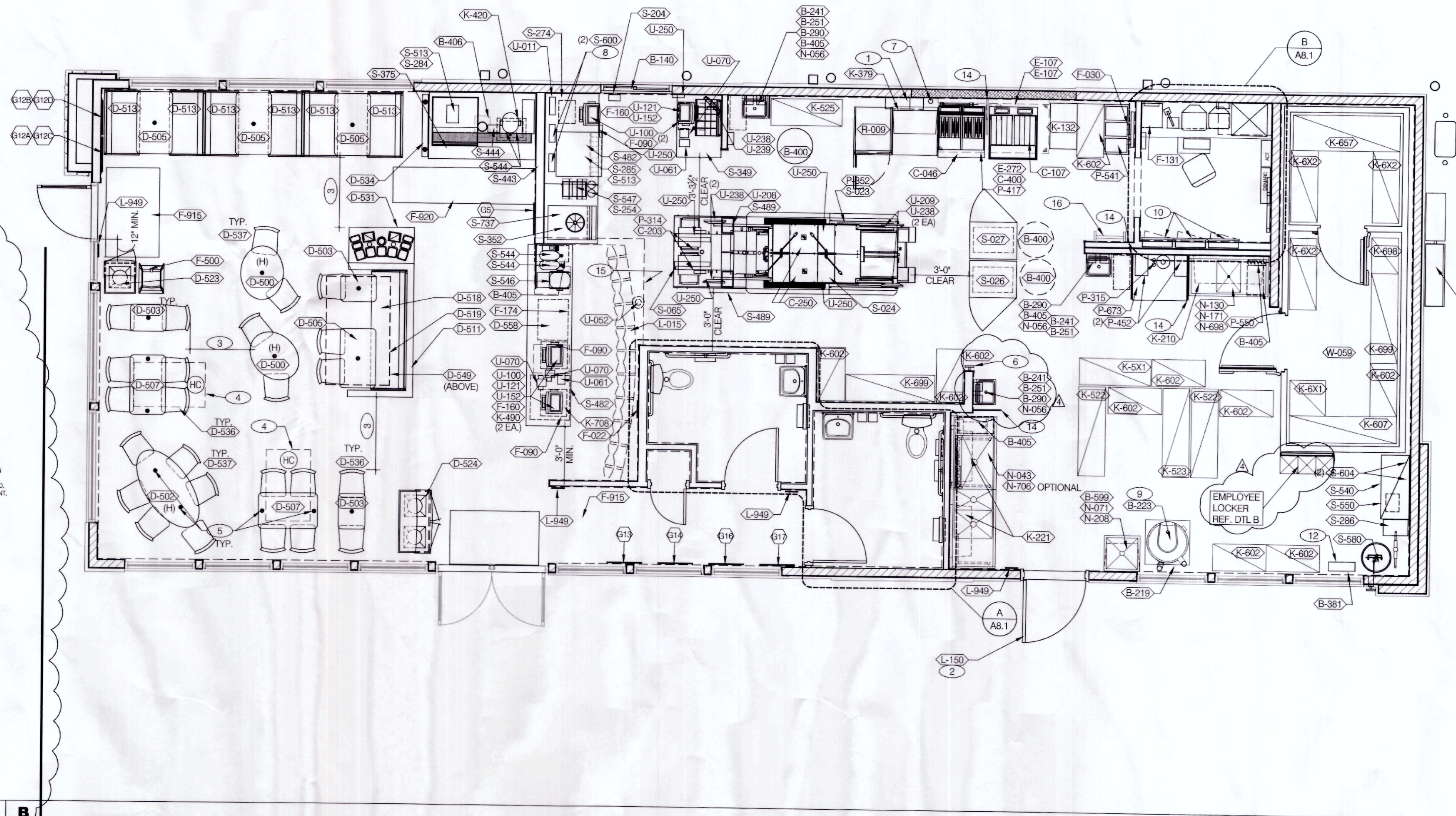
1300 HOLTON LANE  
 TAKOMA PARK, MD 20912



**EQUIPMENT AND SEATING PLAN**  
**A2.0**

PLOT DATE: 6-24-16

L-090 → SITE ITEM



**EMPLOYEE LOCKER UNITS** N.T.S. **B**

SYM.	QTY.	ITEM
D-500	2	TABLE - OVAL - BAR HEIGHT - 24" X 30" - CORE DRILL BASE
D-502	1	TABLE - OVAL - BAR HEIGHT - 30" X 60" - CORE DRILL BASE
D-503	3	TABLE - RECTANGLE - STD HEIGHT - 18" X 24" - CORE DRILL BASE
D-505	4	TABLE - RECTANGLE - STD HEIGHT - 24" X 40" - CORE DRILL BASE
D-507	2	TABLE - RECTANGLE - STD HEIGHT - 24" X 40" - CORE DRILL BASE (ADA)
D-511	1	DIVIDER WALL - 90" LONG
D-513	6	OPEN BACK BENCH SETTEE - 42"
D-518	1	BACKLESS BENCH SETTEE - 38"
D-519	1	BACKLESS BENCH SETTEE - 42"
D-523	1	SINGLE TRASH RECEPTACLE
D-524	1	DOUBLE TRASH RECEPTACLE
D-558	1	SERVICE COUNTER - 122"
D-531	1	CONDIMENT COUNTER - SQUARE CORNERS

**SEATING PACKAGE - BY SEATING VENDOR U.O.N. (TOTAL SEATS = 40)** **E**

SYM.	QTY.	ITEM
D-534	1	SCREEN WALL
D-536	15	FORMED WOOD SHELL DINING CHAIR
D-537	10	FORMED WOOD SHELL DINING CHAIR
D-549	1	SOFFIT BY DISTRIBUTOR.

X	QTY.	ITEM	REMARKS
E129	1	TASTE EXPLOSION 1 OF 4	SEE A8.0 FOR LOCATION
E128	1	TASTE EXPLOSION 2 OF 4	SEE A8.0 FOR LOCATION
E127	1	TASTE EXPLOSION 3 OF 4	SEE A8.0 FOR LOCATION
E126	1	TASTE EXPLOSION 4 OF 4	SEE A8.0 FOR LOCATION
E13	1	VOLCAHO TARGET	SEE A8.0 FOR LOCATION
E12	1	NYC TACO TAXI	SEE A8.0 FOR LOCATION
E11	1	TACO NIGHT TIME	SEE A8.0 FOR LOCATION
E10	1	TACO BEACH BELL	SEE A8.0 FOR LOCATION
E9	1	NUTRITION BOARD	SEE A8.0 FOR LOCATION

**ARTWORK SCHEDULE** **D**

DECOR  
 1. REFER TO SC SHEETS FOR SCOPE OF WORK RESPONSIBILITIES.  
 2. (H) - SYMBOL DENOTES A HIGH TABLE OR DINING COUNTER WITH STOOLS.  
 3. (HC) - SYMBOL DENOTES A HANDICAP ACCESSIBLE TABLE.

STORAGE TYPE	LINEAR FT.
DRY STORAGE	63
COLD STORAGE	22
FROZEN STORAGE	14

**SHELVING QUANTITIES REQUIRED** **C2**

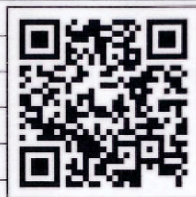
- EQUIPMENT/SEATING PLAN** 1/4"=1'-0" **A**
- HOOD FIRE SUPPRESSION SYSTEM (ANSUL R-102 OR EQUAL).
  - SEE SHEET A1.1 FOR SECURITY DOOR PACKAGE.
  - MAINTAIN 36" MIN CLEAR AISLE EGRESS PATHS TO EXIT DOORS.
  - 30" x 48" CLEAR FLOOR SPACE FOR HANDICAP ACCESS.
  - DOT INDICATES CORE DRILL LOCATION. CORE DRILL LAYOUT TO BE PROVIDED BY THE SEATING VENDOR. SEE DETAIL 7/A6.3 AND SCOPE OF WORK. CHANGE CORE DRILL BITS TO MATCH DECOR BASE SIZE TO MAINTAIN 3/8" MAX GROUT LINE AROUND BASE.
  - PULL STATION @ 3'-8" A.F.F.
  - GAS LINE DOWN TO EQUIPMENT.
  - COORDINATE LOCATION OF HORIZ PVC SYRUP CHASE THRU WALL TO COUNTER.
  - 6" HIGH WATER HEATER PLATFORM.
  - SWITCHGEAR / ELECTRIC PANELS.
  - NOT USED.
  - 8' LADDER.
  - NOT USED.
  - SPLASH GUARD.
  - ALERT LIGHT BOX FOR 3-COMP POWER SOAK.
  - ROOF LADDER (B-049) AND ROOF HATCH (B-050).

**KEYNOTES** **B**

**GENERAL NOTES** **C1**

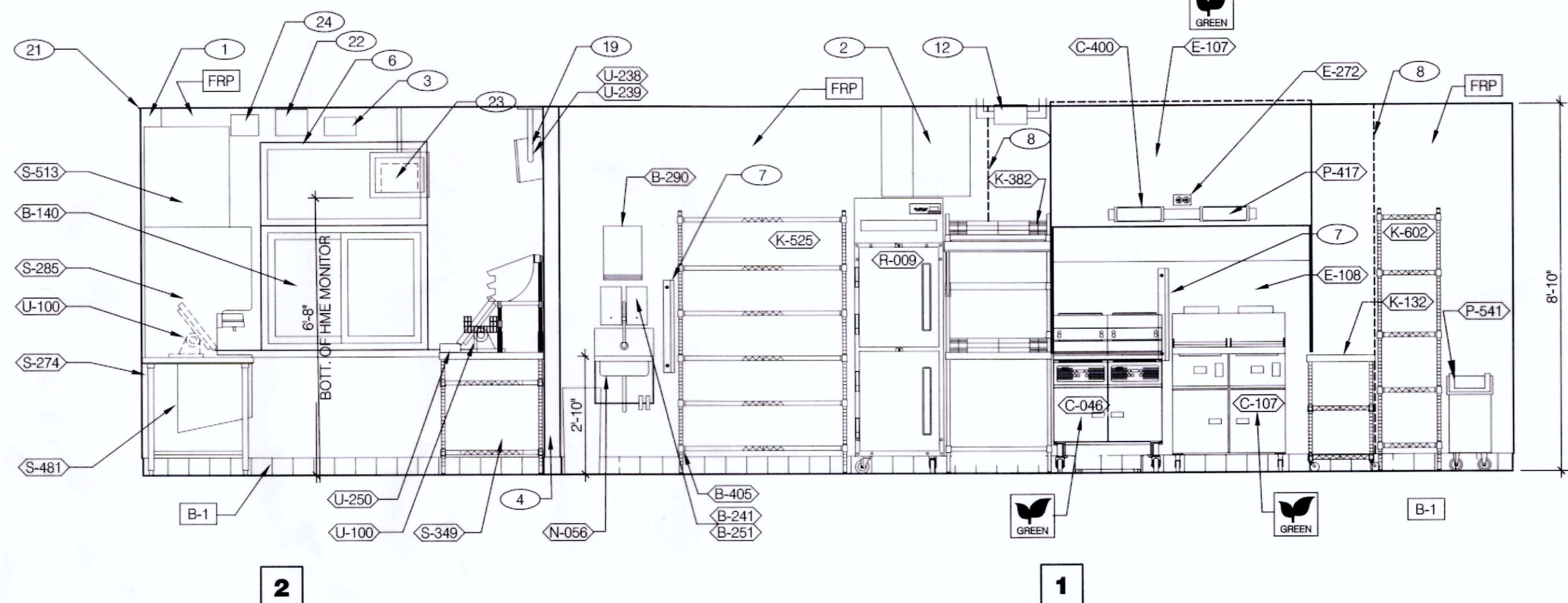
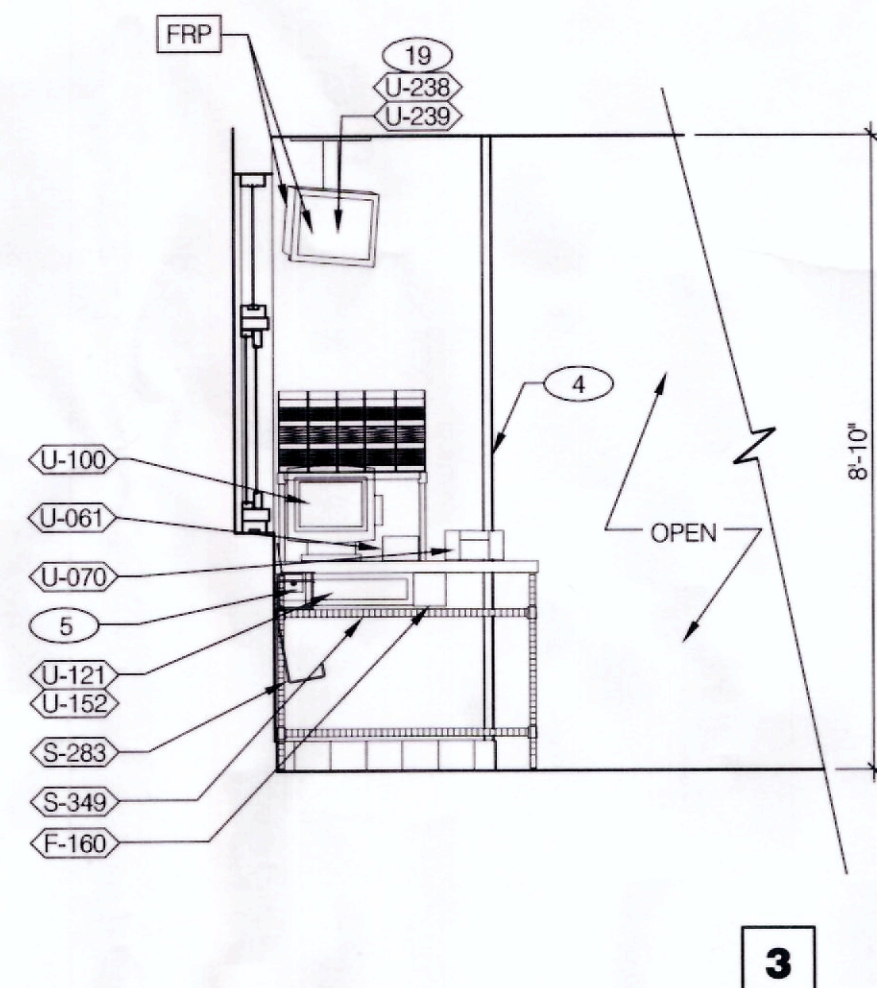
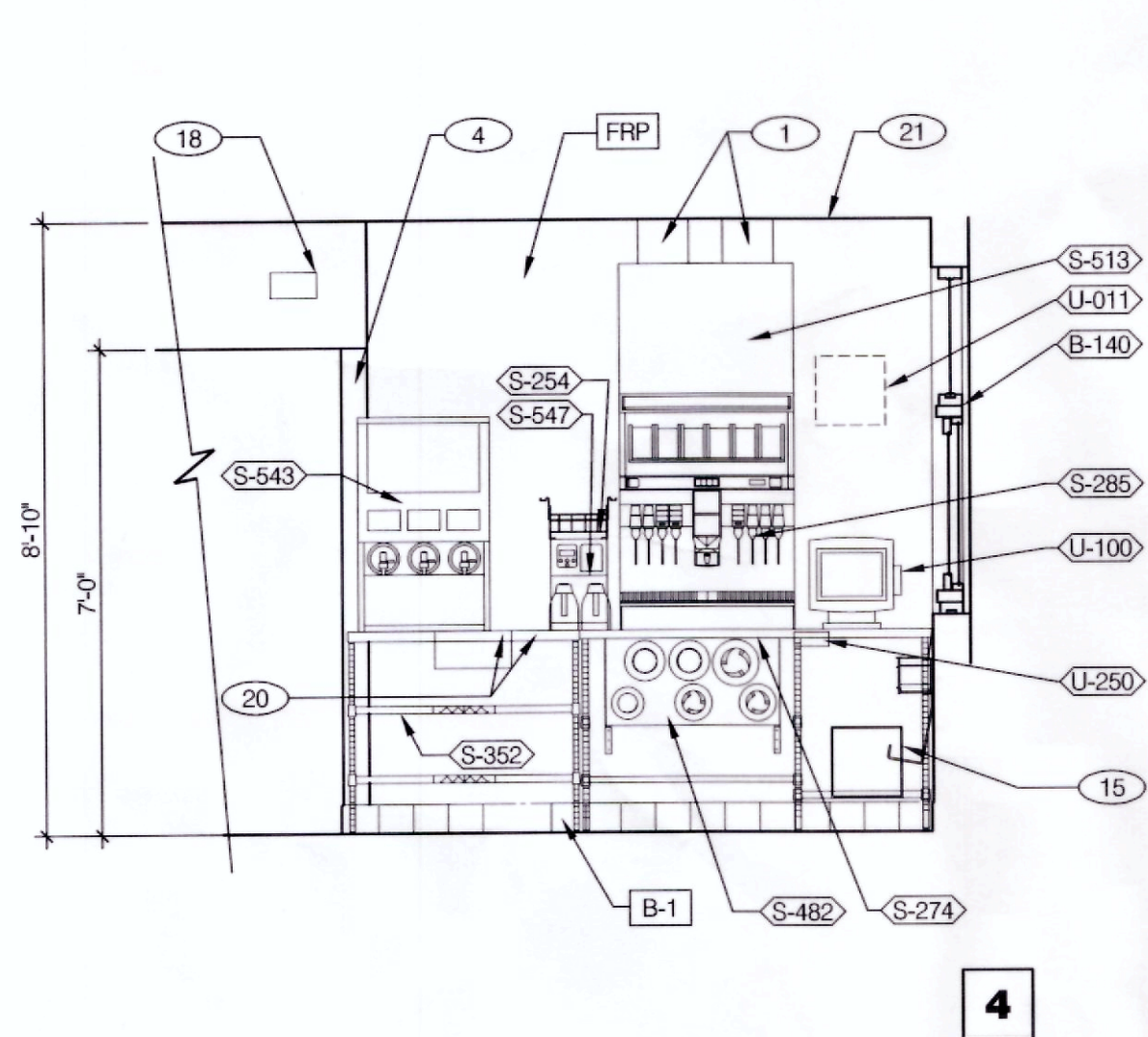
**EQUIPMENT SCHEDULE**

NO.	QTY	G.C.	INST.	ITEM DESCRIPTION	MFR. & MODEL NUMBER	PLUMB	ELECT	GAS	REMARKS	NO.
<b>B CONTRACTOR BUILDING ELEMENTS</b>										
B-049	1	X		ROOF LADDER	PRECISION #FL184				15'-4" WITH 8" EXTENSION	B-049
B-050	1	X		ROOF HATCH	PRECISION #PH-G2-6Y3-0"				2'-6" X 3'-0" CLEAR OPENING	B-050
B-140	1	X		DRIVE-THRU WINDOW	QUICKSERV #SC-4030BR				G.C. TO PROVIDE TRANSOM - DARK BRONZE ANODIZED	B-140
B-219	1	X		WATER HEATER DUNNAGE RACK	NEW AGE INDUSTRIAL CORP., INC. #98147	X		X		B-219
B-223	1	X		WATER HEATER	AO SMITH BTH 120 60 CYCLONE HE	X		X		B-223
B-241	1	X		SOAP DISPENSER (WALL MOUNT)	KAY 3741				SURFACE MTD	B-241
B-251	1	X		SANITIZER DISPENSER	KAY 3741				SURFACE MTD.	B-251
B-265	2	X		MIRROR, 18" X 36"	BOBRICK #B-165-1836				SURFACE MTD	B-265
B-275	2	X		TOILET PAPER DISPENSER	BOBRICK #B-2890				SURFACE MTD	B-275
B-290	1	X		PAPER TOWEL DISPENSER	BOBRICK #B-262				SURFACE MTD.	B-290
B-292	2	X		PAPER TOWEL DISPENSER / TRASH 12 GALLON	BOBRICK #B-3942				SEMI-RECESSED	B-292
B-300	2	X		GRAB BAR 1-1/2"DIA X 36" S.S. FIN.	BOBRICK #B6806X36				SURFACE MTD	B-300
B-305	2	X		GRAB BAR 1-1/2"DIA X 42" S.S. FIN.	BOBRICK #B6806X42				SURFACE MTD	B-305
B-311	2	X		GRAB BAR 1-1/2"DIA X 18" S.S. FIN.	BOBRICK #B6806X18				SURFACE MTD	B-311
B-381	1	X		CO2 CARBON DIOXIDE SENSOR/WARNING	AMPHOBE CO2-200		X			B-381
B-400	3	X		WASTE BASKET - 32 GALLON	RUBBERMAID #2632 (GREY)					B-400
B-405	6	X		WASTE BASKET	RUBBERMAID SLIM JIM #3541 (GREY)					B-405
B-406	1	X		WASTE BASKET	RUBBERMAID 28 QT #2956 (BLACK)					B-406
B-410	1	X		SANITARY NAPKIN RECEPTACLE	RUBBERMAID #6140				INCLUDES ACCESSORY KIT & MOUNTING HARDWARE	B-410
B-599	1	X		MOP SINK STATION	ISS #WST806Y	X				B-599
<b>C COOKING EQUIPMENT</b>										
C-046	1	X		DUAL OPEN FRYER W/ UNDER-FRYER FILTER SYSTEM	FRYMASTER #FPPH255SD		X	X	COMES WITH GAS HOSE KIT. OPTION: WITHOUT FILTER	C-046
C-107	1	X		RE THERMALIZER	PITCO #TB-SRTG14-2	X	X	X	COMES WITH GAS HOSE KIT	C-107
C-203	2	X		SPLIT LID CLAM SHELL TOASTER	PROLINE PROGRILL SL1577YA		X		POWERED BY PRODUCTION LINE	C-203
C-250	2	X		CHEESE MELTER (SINGLE)	A. J. ANTUNES # CM-100	X	X		POWERED BY PRODUCTION LINE	C-250
C-400	1	X		COOK TIMER	FAST #TBZAP12		X		FOR THE RETHERMALIZER	C-400
<b>E EXHAUST HOODS/FIRE SUPP.</b>										
E-107	1	X		STRATOVENT 6'-3" EXHAUST HOOD	STRATOVENT MODEL # TBG3650SVBD6FT3IN		X		PRE-PIPED FOR ANSUL SUPPRESSION	E-107
E-108	1	X		STRATOVENT 106"H X 111" L BACK SPLASH	STRATOVENT MODEL # BACKSPLASH106X111FLA		X			E-108
E-272	1	X		TIMER OUTLET			X			E-272
<b>F OFFICE/EMPLOYEE/MUSIC/MISC.</b>										
F-014	1	X		FILE CABINET (2 DRAWER HIGH) 18" x 36" x 27"H	HON #58266				IN OFFICE. SEE SHEET A8.1	F-014
F-021	1	X		CHAIR - OFFICE	HON #5831				IN OFFICE. SEE SHEET A8.1	F-021
F-022	1	X		LICENSE FRAME 8" X 10" (BLACK)	CREATIVE PALETTE TB30				IN OFFICE. SEE SHEET A8.1	F-022
F-030	1	X		COAT HOOKS	ISS #HOOK246R2Y					F-030
F-040	1	X		OFFICE COMPUTER	POS PROVIDED		X		IN OFFICE. SEE SHEET A8.1	F-040
F-050	1	X		CREDIT CARD SATELLITE ROUTER JUNCTION	YUM		X			F-050
F-060	1	X		MONITOR-OFFICE	YUM				IN OFFICE. SEE SHEET A8.1	F-060
F-080	1	X		OFFICE PRINTER/ COPIER/ FAX/ SCANNER	POS PROVIDED		X		IN OFFICE. SEE SHEET A8.1	F-080
F-090	5	X		UPS (UN-INTERRUPTABLE POWER SUPPLY)	POS PROVIDED		X			F-090
F-102	1	X		MONEY COUNTER	TELLERMATE #TX3000		X			F-102
F-131	1	X		MUSIC SYSTEM	MUZAK #6848. LOCAL LEASE		X		MUZAK (LOCAL LEASE)	F-131
F-160	3	X		DROP SAFE	PERMA VAULT #PRO-10				3-DOOR	F-160
F-174	1	X		SAFE WITH TOUCH SCREEN CONTROLS	BRINKS SAFE A-GALILEO 111-01		X			F-174
F-211	1	X		CLOCK	B&B SYSTEMS #03060425				IN OFFICE. SEE SHEET A8.1	F-211
F-270	1	X		FIRST AID KIT	PROSTAT FIRST AID LLC #2617				IN OFFICE. SEE SHEET A8.1	F-270
F-500	2	X		STACKABLE HIGH CHAIR	KOALA KOA-KB103-01				RUBBERIZED	F-500
F-915	2	X		FLOOR MAT 3' X 5'	ENTRANCE, INC. #41150012				RUBBERIZED @ DRINK STATION	F-915
F-920	1	X		FLOOR MAT 2' X 8'	ENTRANCE #4-4450				RUBBERIZED @ DRINK STATION	F-920
<b>K WORKSTATIONS/SHELVING/CARTS</b>										
K-132	1	X		CLOSING CART	ISS #WST1434Y					K-132
K-210	1	X		PREP SINK WORKSTATION 50" TRACK	ISS #WST255E				WALL TRACK SHELVING	K-210
K-221	1	X		3 COMP. SINK WORKSTATION 96" TRACK	ISS #DS-1F				WALL TRACK SHELVING	K-221
K-382	1	X		FRY WORKSTATION 30"W x 30"D x 75"H	ISS #FRYTAB3030YA					K-382
K-420	1	X		CARBONATOR PLATFORM SHELF 18" X 24"	ISS #WST34Y					K-420
K-490	2	X		FRONT COUNTER SHELVING 18" x 24" x 24" (2 TIER)	ISS #WST440Y				UNDER SERVING COUNTER	K-490
K-517	1	X		PREP RACK 18" X 60" X 76" (6 TIER)	ISS #WST1469Y					K-517
K-5X1	1	X		FUTURE RACK 18" X 48" X 76" (5 TIER)	ISS #WST					K-5X1
K-522	2	X		SMALL PKG. RACK 18" X 60" 76" (5 TIER)	ISS #WST1548Y					K-522
K-523	1	X		CUP & LID RACK 18" X 60" X 76" (3 TIER)	ISS #WST1580Y					K-523
K-525	1	X		FUTURE RACK 18" X 48" X 76" (5 TIER)	ISS #WST1613Y					K-525
K-6X1	1	X		FUTURE RACK 18" X 24" X 76" (5 TIER)	ISS #WST					K-6X1
K-6X2	3	X		FUTURE RACK 18" X 48" X 76" (5 TIER)	ISS #WST					K-6X2
K-602	9	X		SHELVING UNIT 18" X 36" X 86"H (5 TIER)	ISS #WST238Y					K-602
K-604	2	X		SHELVING UNIT 18" X 48" X 86"H (5 TIER)	ISS #WSTSU1848-5Y				WALK IN COOLER	K-604
K-607	1	X		SHELVING UNIT 18" X 72" X 86"H (4 TIER)	ISS #SU187285Y				WALK-IN COOLER	K-607
K-657	2	X		SHELVING UNIT 24" X 72" X 86"H (5 TIER)	ISS #SU247285Y				WALK-IN COOLER	K-657
K-699	3	X		SHELVING UNIT 18" X 60" X 74"H (5 TIER)	ISS #SU186075Y				WALK IN COOLER	K-699
K-708	1	X		DUNNAGE RACK	ISS #WST1702Y				UNDER FRONT COUNTER	K-708
K-698	1	X		SHELVING UNIT 18" X 24" X 74" (5 TIER)	ISS #SU182475Y				GOLD BOND	K-698



**EQUIPMENT SCHEDULE**

NO.	QTY	G.C.	INST.	ITEM DESCRIPTION	MFR. & MODEL NUMBER	PLUMB	ELECT	GAS	REMARKS	NO.
<b>L LIGHTING/SIGNAGE/MENUBOARDS</b>										
L-015	1	X		INTERIOR MENU BOARD PACKAGE - ROTATING, 10-PANEL	EVERBRITE KTO2060P		X		LED INTERNALLY ILLUMINATED	L-015
L-090	1	X		OCB	HYPERACTIVE #TDM-HX1-H05-TCB				FRANCHISE OPTION L-095 TEXAS DIGITAL #AV150CEAVNG60	L-090
L-150	1	X		SECURITY DOOR DANGER SIGN	ADVERCO #ADVFCUSTOM				ORDERED DIRECT FROM YRFS	L-150
L-949	4	X		NO SMOKING SIGN	VOLLRATH #4513				PROVIDE PER JURISDICTIONAL REQUIREMENTS	L-949
<b>N SINKS/DISHWASHERS</b>										
N-043	1	X		3-COMP POWER SOAK 102"L x 31"D (R TO L)	METCRAFT #PS6750	X	X		W/ PRE-RINSE,CLICK&CLEAN SYSTEM & (2) T & SB-2466 FAUCETS	N-043
N-056	1	X		HAND SINK (KITCHEN)	AERO #HSK		X			N-056
N-071	1	X		MOP SINK FAUCET	T&S #B-2456-W-MAX		X			N-071
N-130	1	X		1 COMP. SINK FAUCET	T&S FAUCET B-2465		X		FOR N-699	N-130
N-141	2	X		FAUCET (RESTROOMS)	T&S FAUCET B-0831-WA		X		FRANCHISE OPTION N-134: T&S B-2465	N-141
N-171	1	X		1 COMP. SINK WASTE DRAIN LEVER	T&S FAUCET S-20		X		2" TWIST TYPE, FOR N-699	N-171
N-208	1	X		MOP SINK 24"X24" FLOOR MOUNT SINK	AERO MANUF. CO., INC. #3MP-2121-6/1P		X		INCLUDES (2) 24"X36" WALL PANELS	N-208
N-698	1	X		1 COMP PREP SINK 53"W X 27"D X 35 1/2"H	AERO #2F1211617LR		X			N-698
<b>P FOOD PREPARATION</b>										
P-314	1	X		WATER PRESSURE REGULATOR KIT	A.J. ANTUNES & CO. #7000314		X			P-314
P-315	1	X		REVERSE OSMOSIS SYSTEM	CUNO #FSTM-HP		X		REQUIRES FLOOR SINK	P-315
P-352	1	X		DUAL LINE, 157" READY TO ACCEPT EVO CABINETS	DELFIELD #TB00PF7 (DUKE OPTIONAL)		X	X	DUKE - WEST / DELFIELD EAST	P-352
P-417	1	X		8-CHANNEL TIMER	FAST #TRACK24TB			X	ALTERNATE: PRINCE CASTLE #755HM8TB	P-417
P-452	2	X		HOT WATER SYSTEM	BUNN-MACHINE #43600.0014		X	X	W/ BRACKET, FRONT MOUNT.	P-452
P-541	1	X		STORAGE BINS	B4B SYSTEMS #0307010					P-541
P-550	1	X		KNIFE RACK	EDLUND #KR-99					P-550
P-673	1	X		WORK TABLE, 36" X 30"	ISS #WST906A				FOR RETHERMALIZER AND HOT WATER	P-673
<b>R REFRIGERATION</b>										
R-009	1	X		REACH-IN FREEZER	DELFIELD 6100XL			X		R-009
<b>S SERVING/DRIVE-THRU</b>										
S-004	1	X		HEAT CABINET - FULL HEIGHT - (1) LH	BEVLES #CS82-CH8 120LH			X	W/ 8 SHELVES EACH	S-004
S-005	1	X		HEAT CABINET - FULL HEIGHT - (1) RH	BEVLES #CS82-CH8 120RH			X	W/ 8 SHELVES EACH	S-005
S-023	1	X		WARMER,EVO TACO TOWER,TB,208V, L TO R UNIT	CARTER HOFFMAN #EVOR208		X		MOUNT ON PRODUCTION LINE OVER SHELF	S-023
S-024	1	X		WARMER,EVO TACO TOWER,TB,208V, R TO L UNIT	CARTER HOFFMAN #EVOR208		X		MOUNT ON PRODUCTION LINE OVER SHELF	S-024
S-065	1	X		DESSERT TOWER	HATCO #GRBW-24D			X	MOUNT ON PRODUCTION LINE OVER SHELF	S-065
S-204	1	X		DRIVE-THRU TIMER SYSTEM	HME #C11422TB			X	MOUNT ON DT WINDOW HEADER	S-204
S-254	1	X		CONDIMENT RACK	PRONTO PRODUCTS #CHPW0446				W/ ISS #CONDOW24L	S-254
S-274	1	X		BEVERAGE COUNTER DRIVE THRU (36" x 61")	ISS #WST1242YA				W/ ISS #CONDOW24L	S-274
S-284	1	X		BEVERAGE DISPENSER - SELF-SERVE	CORNELIUS 611067625		X	X	BY PEPSI	S-284
S-285	1	X		BEVERAGE DISPENSER - DRIVE THRU	SERVEND NGF-2500D		X	X	OR CORNELIUS IDC255 PROGATE 5 (BY PEPSI)	S-285
S-286	1	X		WATER FILTER SYSTEM	SHURFLO # W66-M3-22-003		X	X	FRANCHISEES CAN USE SELECTO #TB51620-5	S-286
S-349	1	X		30" x 42" DRIVE-THRU COUNTER	ISS # WST 1344Y					S-349
S-352	1	X		40" x 36" DRIVE-THRU DRINK TABLE	# TBD					S-352
S-375	1	X		SELF-SERVE DRINK COUNTER	CARTER HOFFMAN #CH3TDS72N55					S-375
S-443	1	X		18"Hx23"Dx10"W STRAW - LID DISPENSER	CAL-MIL ADA TB103					S-443
S-444	1	X		NAPKIN DISPENSOR	#5555100					S-444
S-482	2	X		CUP DISPENSER	A.J. ANTUNES #DACS60				FRANCHISEES CA USE HOSHISAKI KMS-1230	S-482
S-489	2	X		DIGITAL SCALE	EDLUND DS-10			X		S-489
S-513	2	X		ICE MAKER (PLACED ON TOP OF DRINK MACHINES)	MANITOWOC #SY-1474C		X	X	W/ ROOF MOUNTED CONDENSERS	S-513
S-540	1	X		PEPSI BOOSTER TANK			X	X	SEE SCOPE OF WORK (PEPSI)	S-540
S-543	1	X		FROZEN BEVERAGE DISPENSER	CORNELIUS VIPER #621380041TB		X	X	W/ BOOSTER AND INSTALLATION KIT	S-543
S-544	4	X		ICED TEA DISPENSER	BUNN TDO-N-3.5				3.5 GALLON NARROW ICED BEVERAGE DISPENSER	S-544
S-546	1	X		ICED TEA BREWER	TETLEY TB3Q		X	X		S-546
S-547	1	X		BUNN POD BREWER	MY CAFE AP AUTOPOD # 42300 0001			X		S-547
S-550	1	X		BAG-IN-BOX SYRUP RACK	CORNELIUS/REMCOR BNB12B8P</					

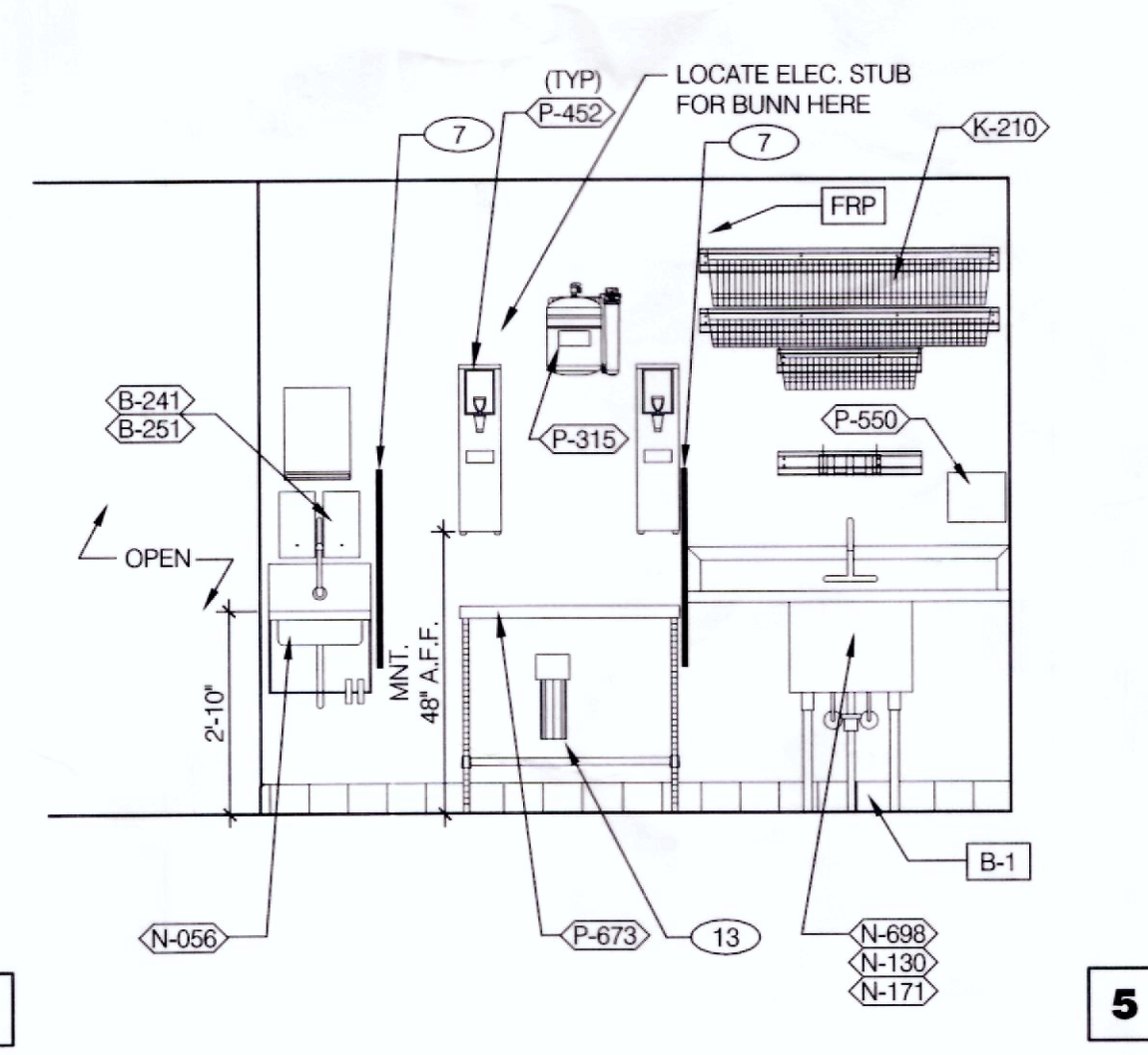
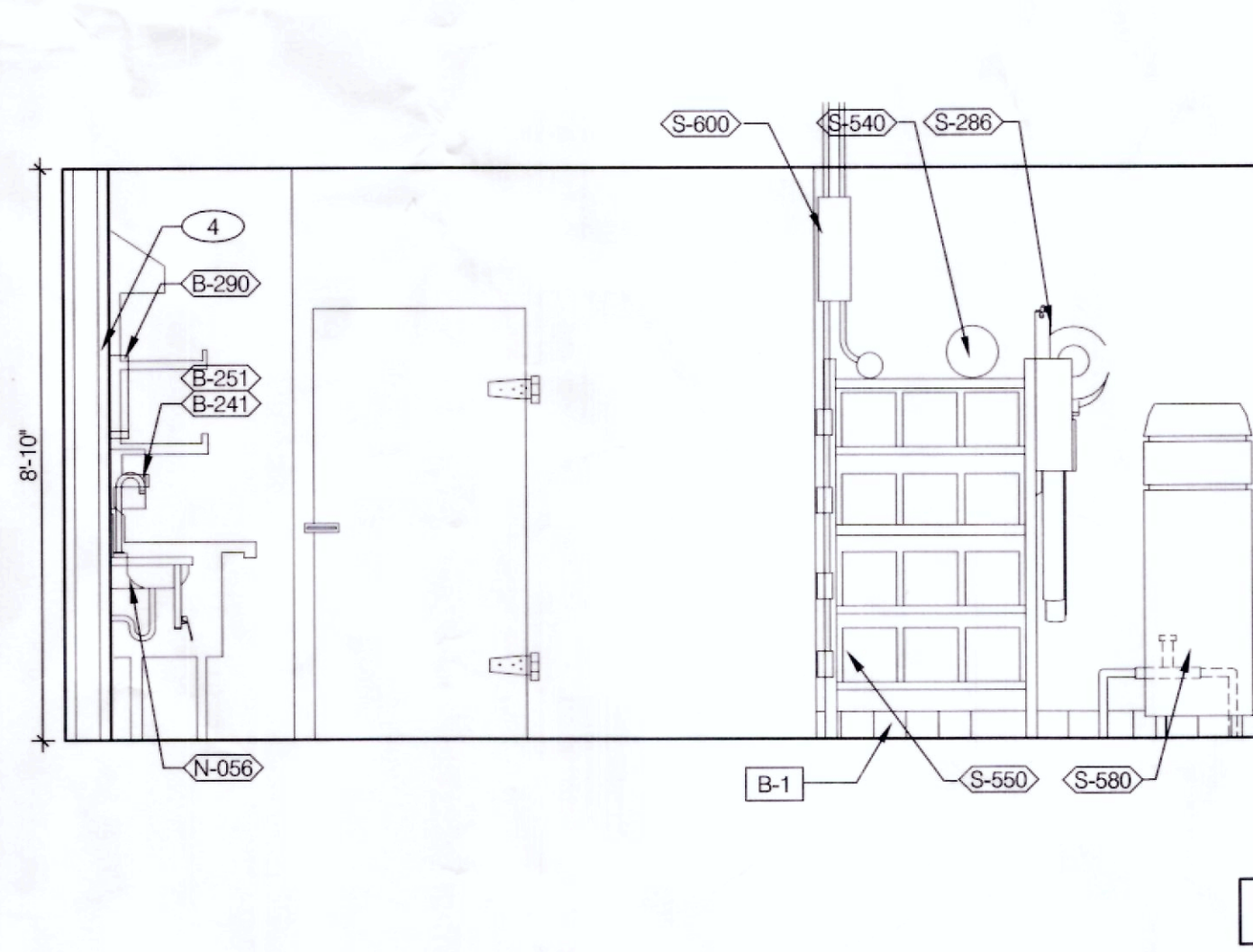
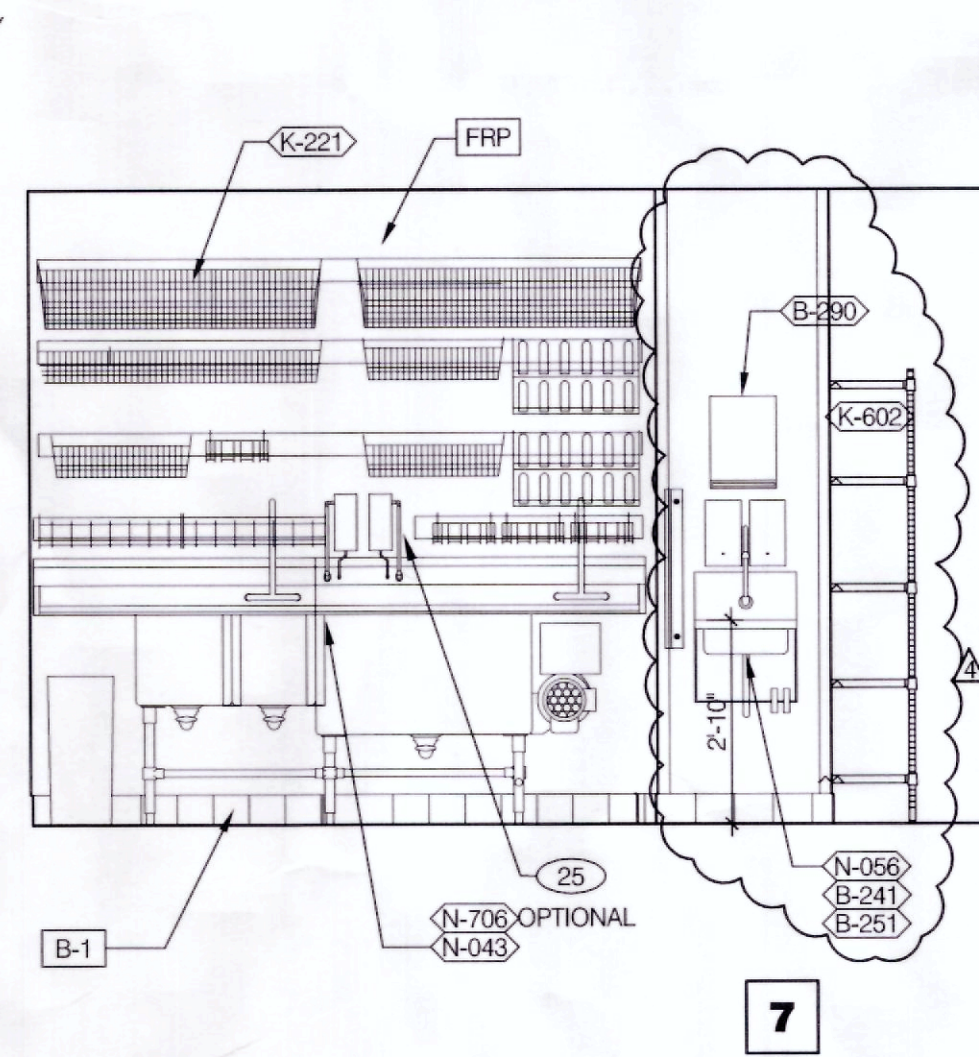
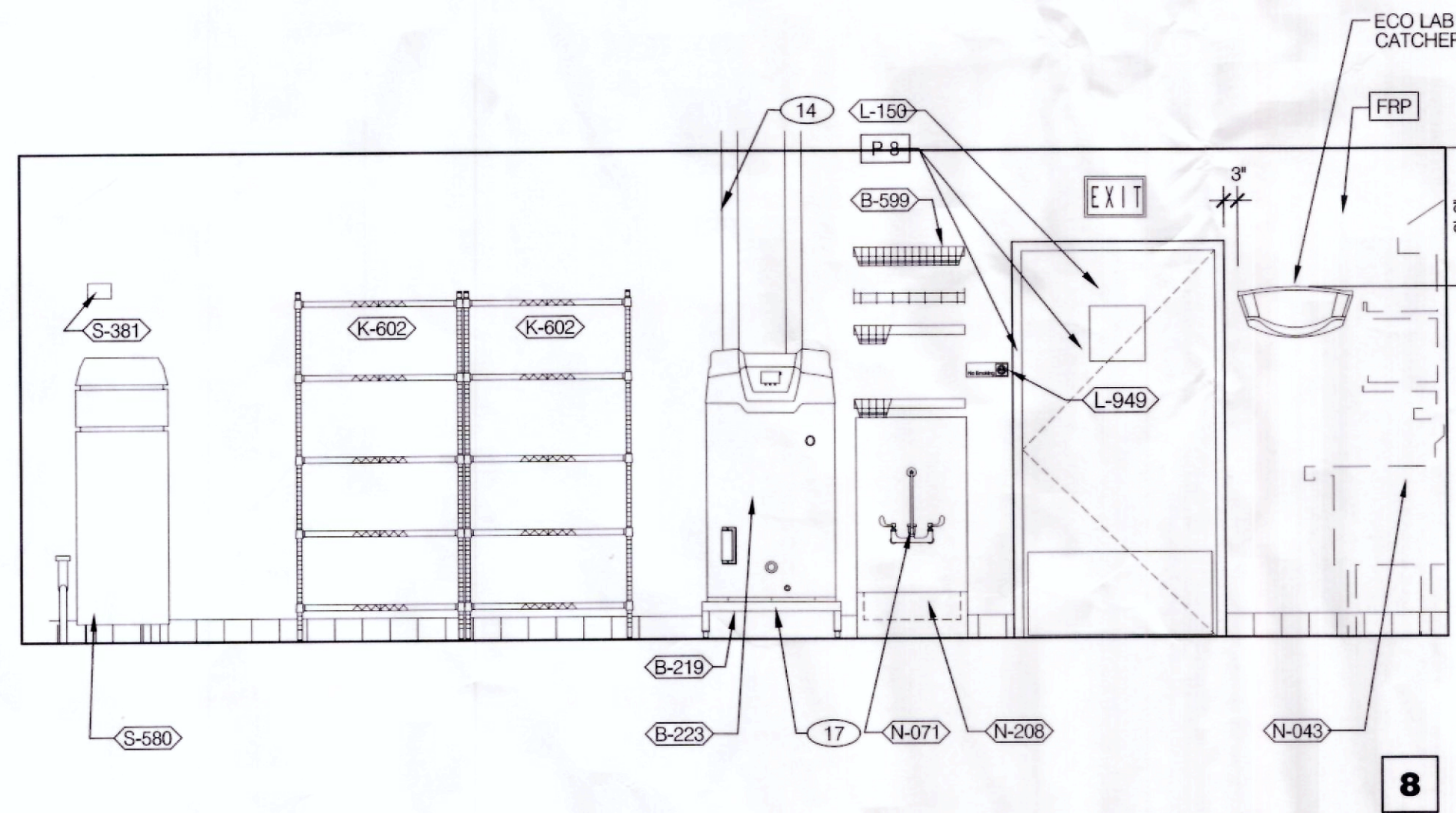


**DRIVE-THRU** 3/8" = 1'-0"

**DRIVE-THRU** 3/8" = 1'-0"

**DRIVE-THRU** 3/8" = 1'-0"

**TB COOK** 3/8" = 1'-0"

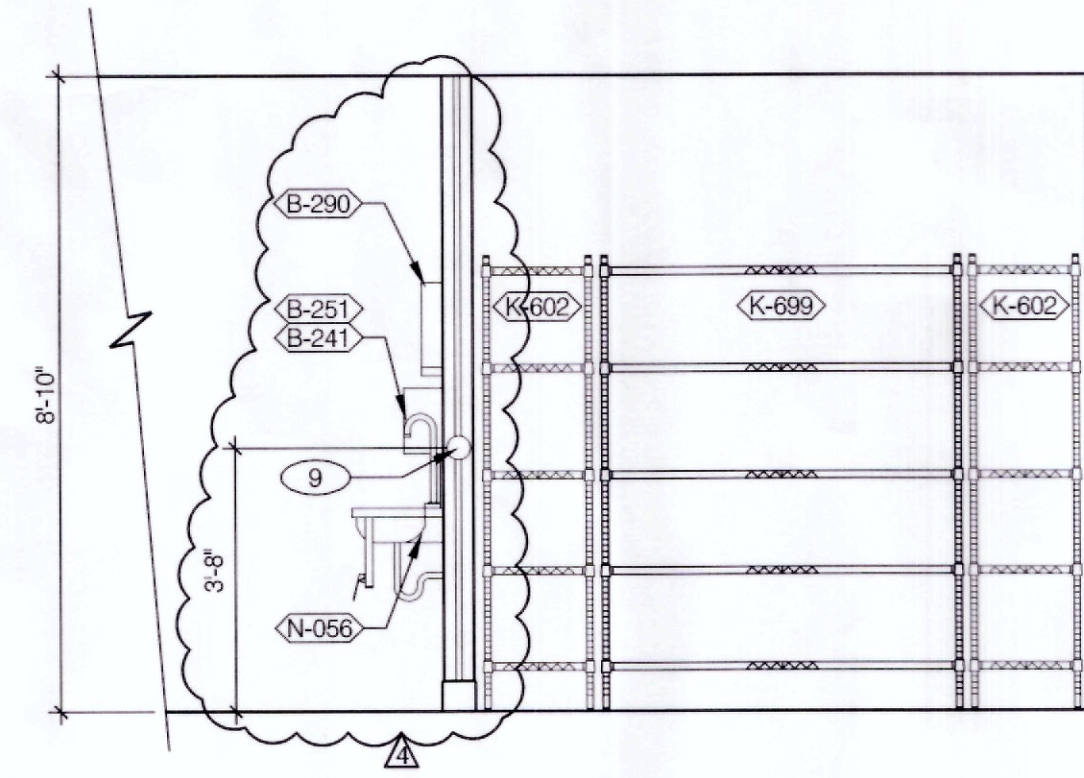


**UTILITY** 3/8" = 1'-0"

**WARE WASHING** 3/8" = 1'-0"

**UTILITY** 3/8" = 1'-0"

**WARE WASHING** 3/8" = 1'-0"



**DRY STORAGE** 3/8" = 1'-0"

- 1 STAINLESS STEEL CHASE FOR SYRUP LINES & ICE MACHINE REFRIGERANT LINES. SEE DETAIL 19/A6.4
- 2 ANSUL CABINET.
- 3 DRIVE-THRU TIMER DISPLAY UNIT.
- 4 SS CORNER / END WALL CHANNEL GUARD, FULL HEIGHT. SEE DETAIL 19/A6.3.
- 5 HOLD-UP BUTTON.
- 6 SS CORNER GUARDS AT PERIMETER OF D/T WINDOW. SEE DETAILS 5 & 8/A6.1 AND SCOPE OF WORK FOR RESPONSIBILITIES.
- 7 SPLASHGUARD. SEE DETAIL 9/A6.3.
- 8 EDGE OF SS PANEL BEHIND HOOD.
- 9 ANSUL PULL STATION.
- 10 J-BOX AND OUTLET INCLUDED WITH HOOD. INSET WITH FLUSH WITH FACE OF HOOD.
- 11 20 GA. STAINLESS STEEL PANEL BEHIND HOOD.
- 12 GAS SHUT-OFF VALVE.
- 13 FILTER FOR HOT WATER SYSTEM.
- 14 WATER HEATER FLUE. SEE PLUMBING DRAWINGS.
- 15 OPENING FINISHED WITH FRP FOR SYRUP TUBES. SEE DETAIL 11/A6.4.
- 16 NOT USED
- 17 6" HIGH WATER HEATER PLATFORM.
- 18 ALERT LIGHT BOX FOR 3-COMP POWER SOAK.
- 19 CEILING MOUNT MONITOR BRACKET. SEE DETAIL 2/A6.3.
- 20 ADJACENT TABLE TOPS TO BE INSTALLED AT SAME LEVEL. ADJUST IN THE FIELD AS REQUIRED.
- 21 RAISE INDICATED SECTION OF CEILING TO 8'-10". SEE SHEET A7.1.
- 22 DT TIMER SIGNAL PROCESSOR.
- 23 DT TIMER MONITOR AND CONTROL UNIT.
- 24 DT TIMER ETHERNET SWITCH.
- 25 CUT WALL-HANGING TRACK TO ALLOW SPACE FOR CLICK&CLEAN SYSTEM

**KEY NOTES**

**A**



PROFESSIONAL CERTIFICATION:  
I HEREBY CERTIFY THAT THESE DOCUMENTS WERE PREPARED OR APPROVED BY ME, AND THAT I AM A DULY LICENSED PROFESSIONAL ARCHITECT UNDER THE LAWS OF THE STATE OF MARYLAND.  
LICENSE NUMBER 10830.  
EXPIRATION DATE: 08/19/2016.



15025.000

- △ ADDRESS CHANGE
- △ COUNTY COMMENTS 4/7/16
- △ HEALTH DEPT COMMENTS 6/24/16
- △
- △
- △
- △
- △

DATE: JULY 15, 2015  
BUILDING TYPE: MED-40-MOD  
PLAN VERSION: JUNE 2015  
SITE NUMBER: \_\_\_\_\_  
ENTITY NUMBER: \_\_\_\_\_

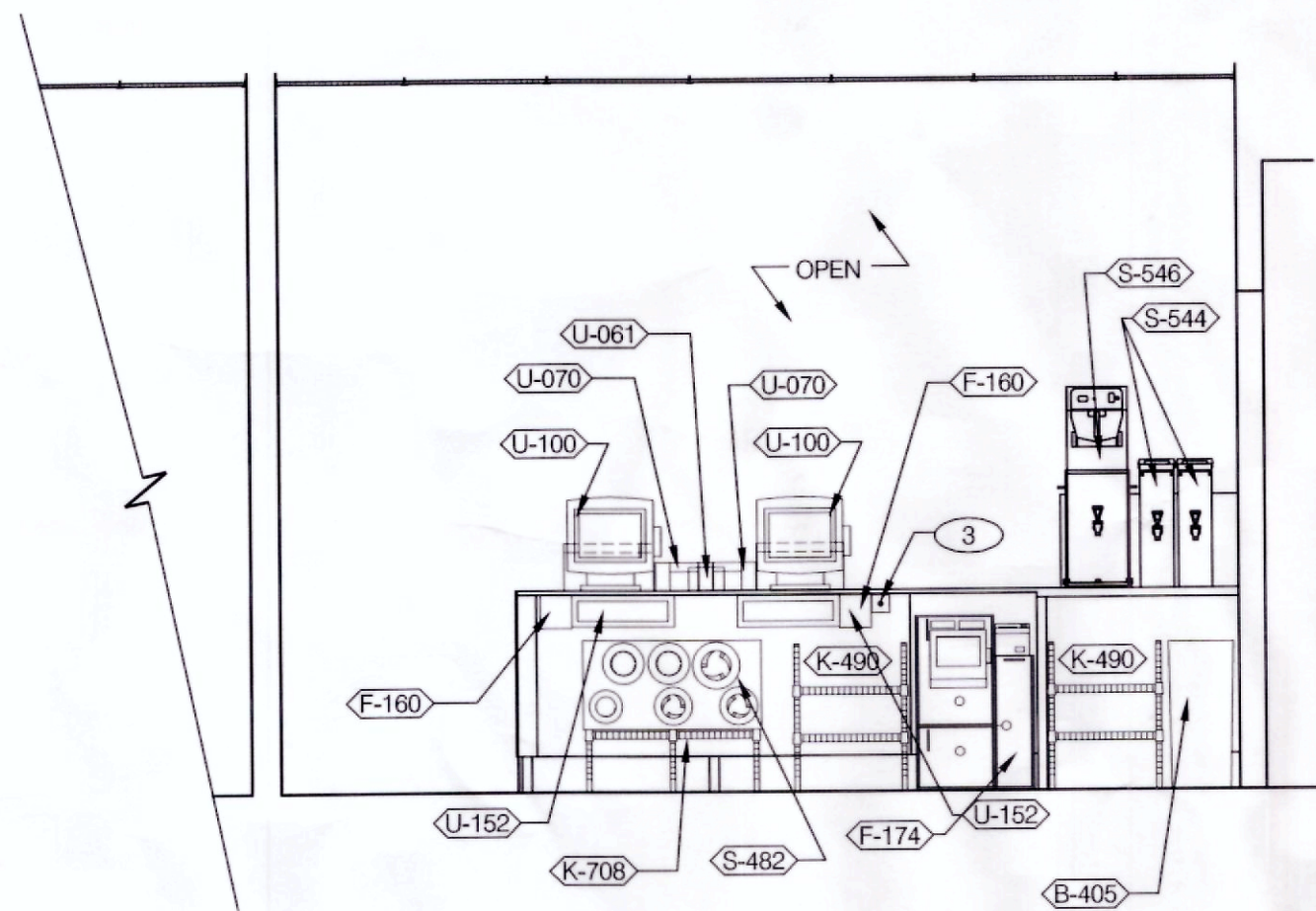
1300 HOLTON LANE  
TAKOMA PARK, MD 20912



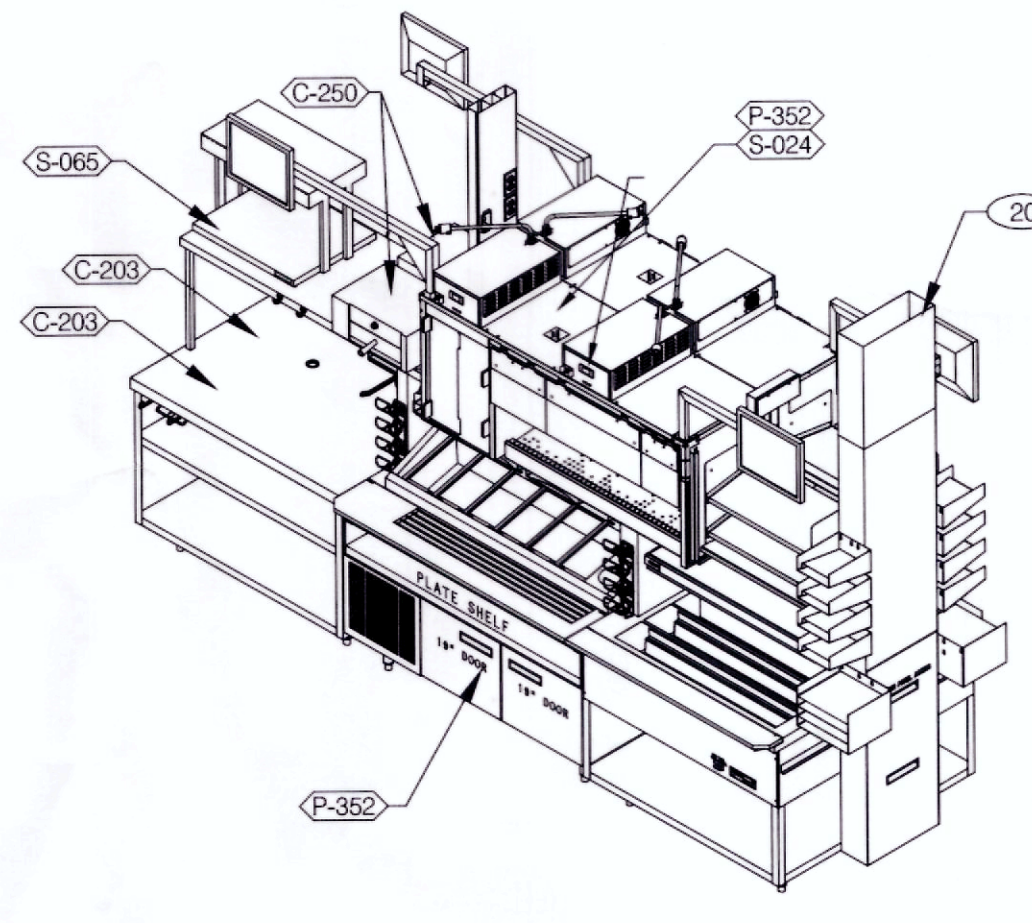
**INTERIOR ELEVATIONS KITCHEN**

**A8.2**

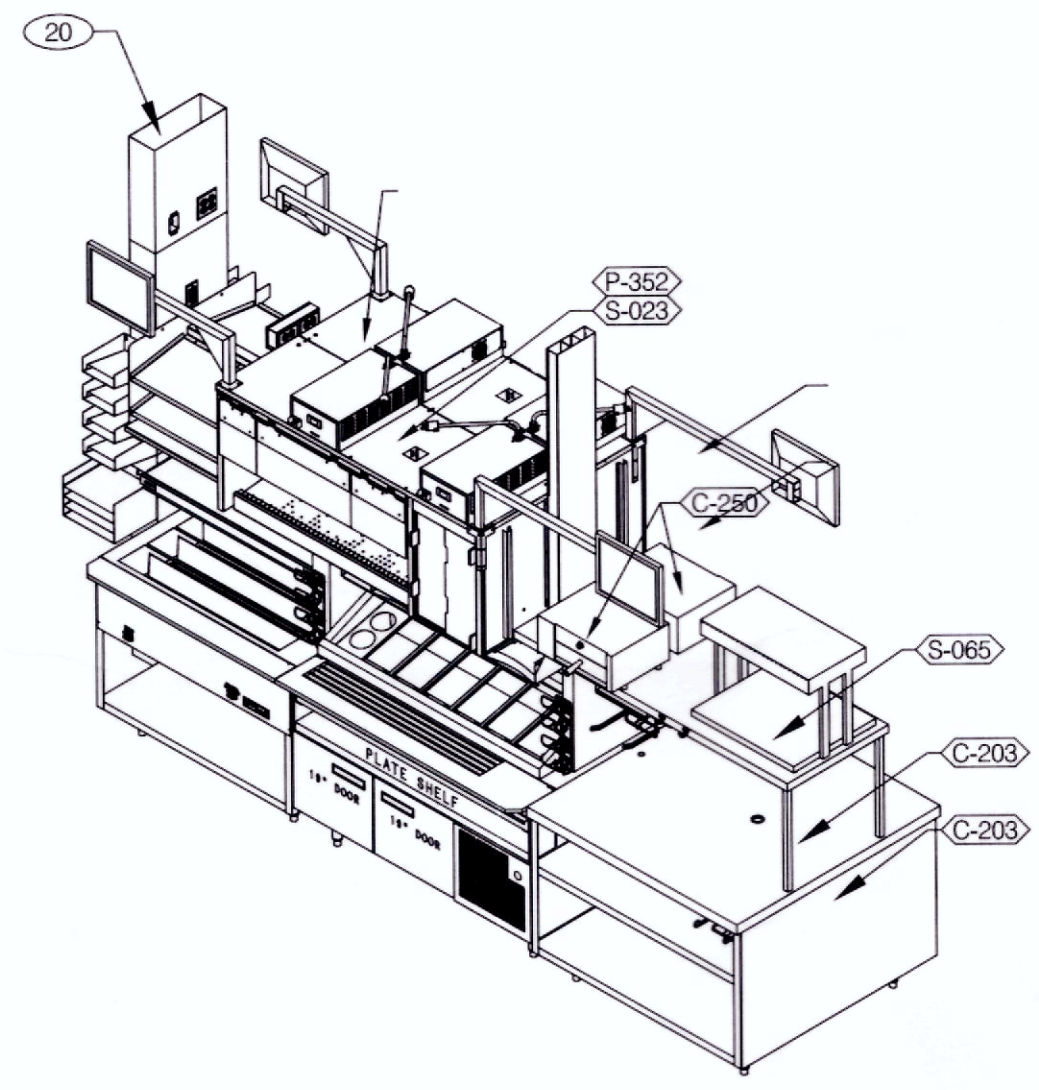
PLOT DATE: 6-24-16



3



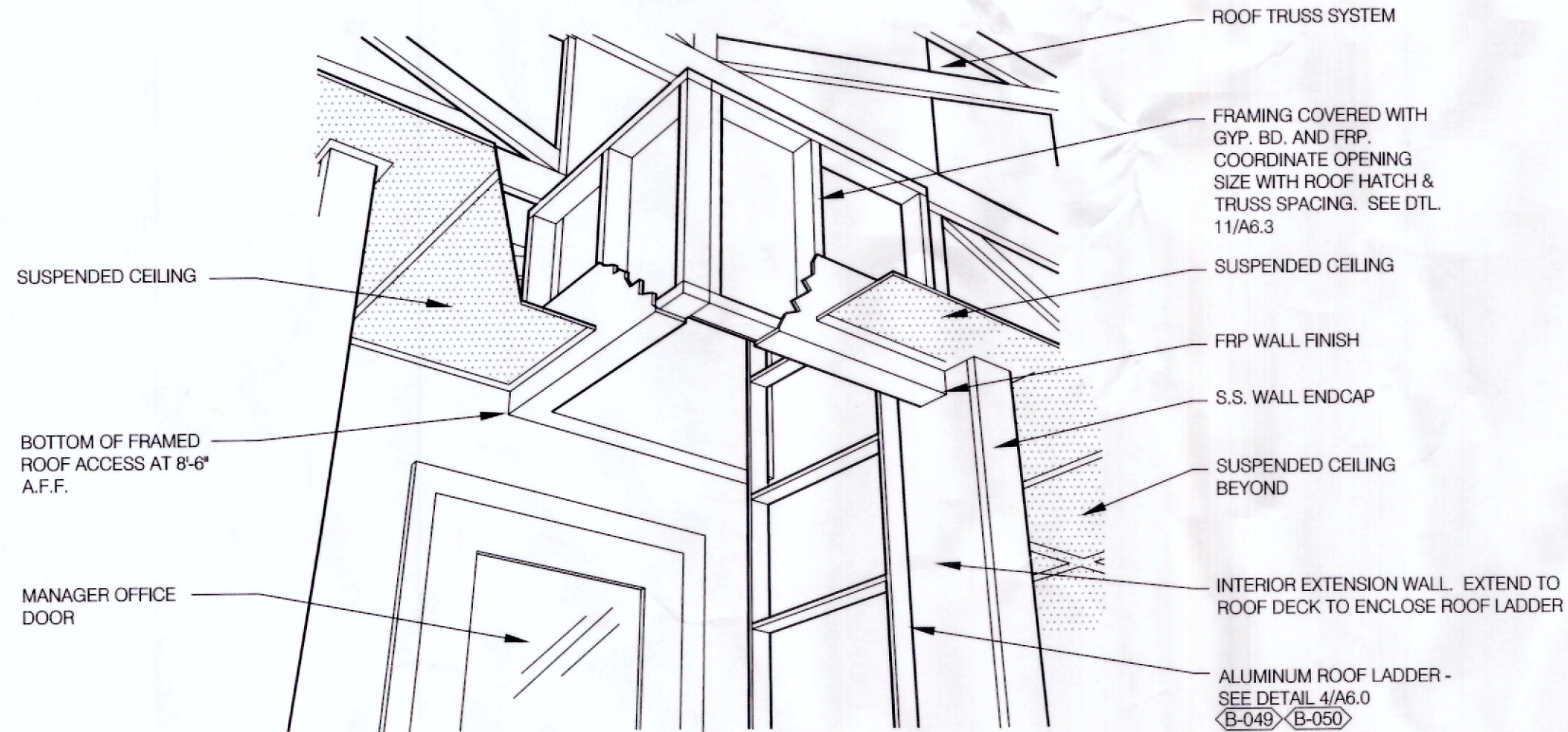
2



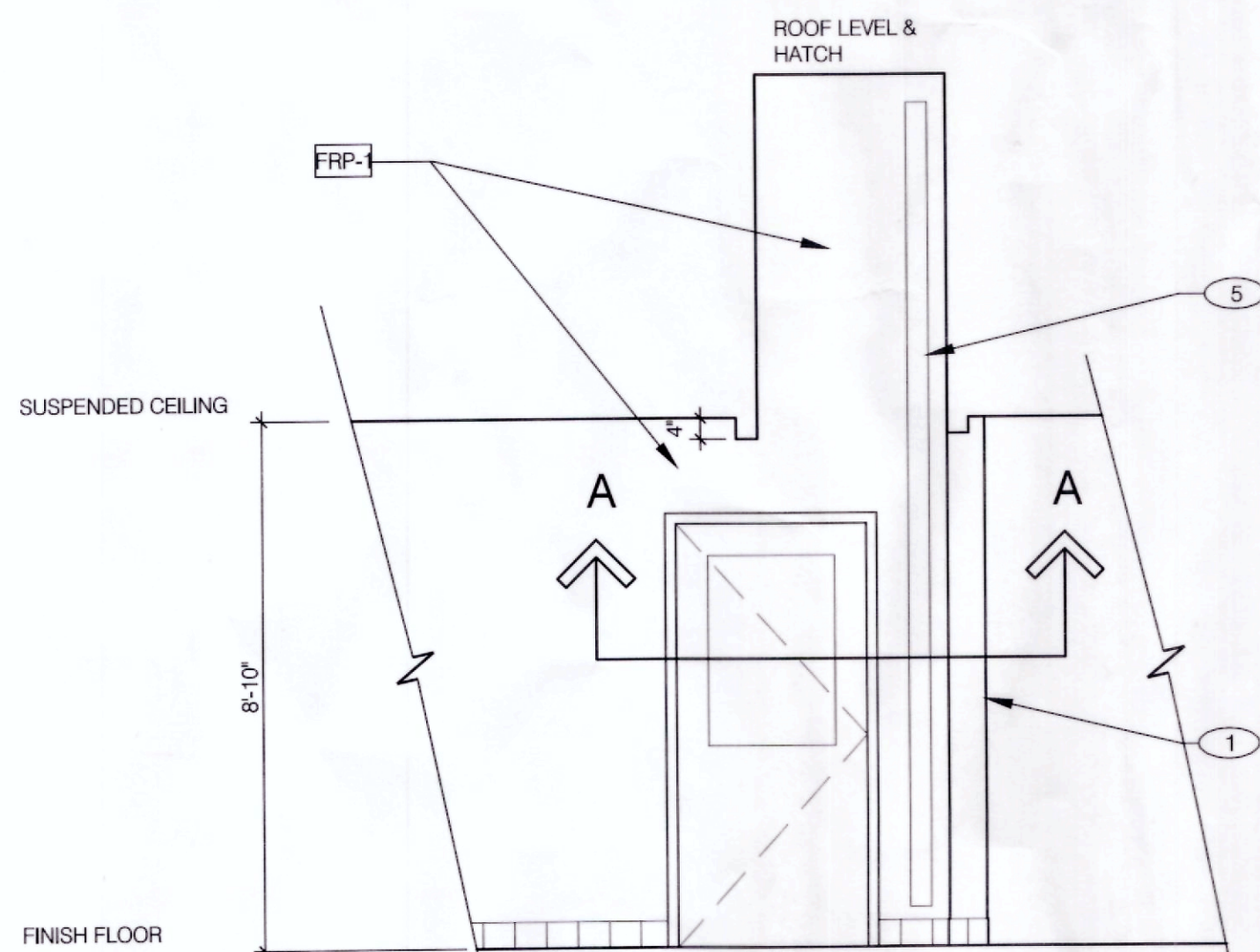
1

**SERVING** 3/8" = 1'-0"

**EVO DUAL LINE** 3/8" = 1'-0"

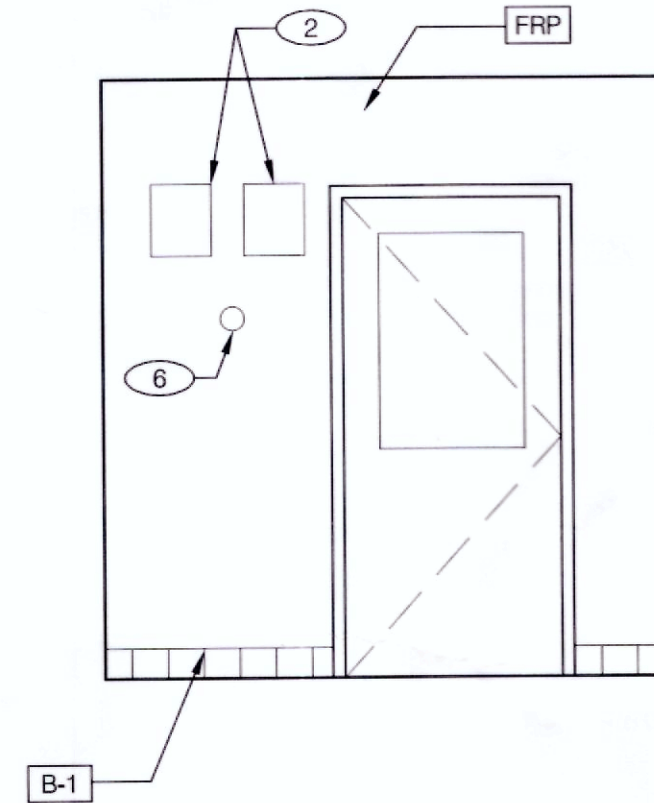


A - ROOF LADDER VIEW



5

**ROOF ACCESS PASSAGEWAY** N.T.S. **B**



4

**EMPLOYEE / STORAGE** 3/8" = 1'-0"

5

### Taco Bell Mop Sink Installation

**Dispenser Tap:**  
 Degreaser - White  
 Floor Care  
 Quarry Tile - Turquoise  
 Xcelerator - Purple  
 Glass & Multi-Surface Cleaner - Tan

**Note:** Most Taco Bell installations use Degreaser in gallons, not bags.

**Note:** Side kick - must provide for hanging wet tools at mop sink.

**Note:** All connections should be made per local plumbing codes.

**Note:** Use clips (# 8730-1891) to secure all tube connections.

**INSTALL IN ACCORDANCE WITH STATE AND LOCAL PLUMBING CODES.**  
 In states or municipalities requiring dedicated or hard-plumbed water lines, the dispensing unit at the 3-compartment sink must be connected to a "TEMPERED" water source. This may require the installation of a mixing/tempering valve.

**ECOLAB** Ray Chemical Company  
 8300 Capital Circle  
 Greensboro, NC 27409-9790, USA 800.529.5458

©2012 Ray Chemical Company. All Rights Reserved.

**MOP SINK INSTALLATION** **C**

- 1 SS CORNER / END WALL CHANNEL GUARD, FULL HEIGHT. SEE 19/A6.3.
- 2 FAN MOTOR STARTERS, SURFACE MOUNTED. TYP. OF 2.
- 3 HOLD-UP BUTTON
- 4 UTILITY CHASE.
- 5 ROOF LADDER. SEE 7/A6.0.
- 6 TEMPERATURE SENSOR. SEE MECHANICAL DRAWINGS.

**KEY NOTES** **A**

**MARK D. MCCLUGGAGE AIA, CCS**  
 1833 E. Douglas Wichita, KS 67211  
 Tel: (316) 265-5446  
 Fax: (316) 265-5446  
 www.gdm.com

PROFESSIONAL CERTIFICATION:  
 I HEREBY CERTIFY THAT THESE DOCUMENTS WERE PREPARED OR APPROVED BY ME, AND THAT I AM A FULLY LICENSED PROFESSIONAL ARCHITECT UNDER THE LAWS OF THE STATE OF MARYLAND. LICENSE NUMBER 10830. EXPIRATION DATE: 08/19/2016.

15025.000

- ADDRESS CHANGE
- COUNTY COMMENTS 4/7/16
- HEALTH DEPT COMMENTS 6/24/16
- 
- 
- 
- 
- 
- 

DATE: JULY 15, 2015  
 BUILDING TYPE: MED-40-MOD  
 PLAN VERSION: JUNE 2015  
 SITE NUMBER: \_\_\_\_\_  
 ENTITY NUMBER: \_\_\_\_\_

1300 HOLTON LANE  
 TAKOMA PARK, MD 20912

**LIVE MAS**  
 MEDIUM40 - MODIFIED

**INTERIOR ELEVATIONS KITCHEN**

**A8.3**

PLANT DATE: 6-24-16

1. ALL WORK SHALL BE DONE IN ACCORDANCE WITH ALL CURRENT STATE AND LOCAL CODES AND LAWS.
2. SOIL AND WASTE PIPE SHALL SLOPE 2% MINIMUM, UNLESS OTHERWISE NOTED OR REQUIRED BY CODE.
3. ALL DRAIN WATER AND GAS LINES SHALL BE KEPT TIGHT TO THE UNDERSIDE OF EQUIPMENT AND SECURED IN PLACE.
4. VERIFY THE LOCATION OF THE SANITARY SEWER ON THE SITE PLAN AND SHALL REQUEST THE SEWER SYSTEM AS REQUIRED.
5. PROVIDE TRAP PRIMERS FOR FLOOR DRAINS IN RESTROOMS, WHERE REQUIRED BY CODES. PROVIDE DEEP SEAL TRAPS FOR FLOOR DRAINS WITHOUT TRAP PRIMERS.
6. ALL CLEANOUTS SHALL BE INSTALLED WHERE READILY ACCESSIBLE. THE CONTRACTOR SHALL COORDINATE ALL CLEANOUT LOCATIONS WITH EQUIPMENT, CABINETS, ETC. AND THE OWNERS REPRESENTATIVE PRIOR TO ANY INSTALLATION.
7. ALL VALVES, TRAP PRIMERS, WATER HAMMER ARRESTORS OR OTHER EQUIPMENT SHOWN IN WALLS OR ABOVE NON-ACCESSIBLE CEILINGS SHALL BE INSTALLED BEHIND AN ACCESS PANEL.
8. ALL FLOORING FINISH SHALL BE INSTALLED A MINIMUM OF 12 INCHES FROM ANY VERTICAL SURFACE AND 10 FEET FROM ANY OUTSIDE AIR INTAKE.
9. PROVIDE GAS PIPING TO UNITS AND ALL FINAL CONNECTIONS REQUIRED FOR OPERATION.
10. INSTALL SHUT-OFF VALVES ON ALL HOT AND COLD WATER LINES TO FIXTURE OR APPLIANCE. ALL EXPOSED WATER AND WASTE LINES TO BE CHROME PLATED.
11. PROVIDE A LABEL HANDLE GAS SHUT-OFF VALVE IN THE BRANCH BRING OF EACH APPLIANCE OR PIECE OF EQUIPMENT. FOR EACH APPLIANCE INSTALL QUICK DISCONNECT FLEXIBLE PIPE WHEN ALLOWED BY CODE AND RESTRAINING DEVICE FURNISHED BY OWNER. PROVIDE PRESSURE REDUCING VALVES AT EACH PIECE OF EQUIPMENT OR APPLIANCE. IF GAS PRESSURE GREATER THAN 10"/sq. IN IS USED DOWNSTREAM FROM THE GAS METER.
12. ALL VALVES, UNIONS, ETC. SHALL BE SAME SIZE AS PIPE UNLESS OTHERWISE INDICATED ON DRAWINGS.
13. REFER TO KITCHEN EQUIPMENT DRAWINGS FOR PUMPING ROUGH-IN SCHEDULE AND FOR ADDITIONAL WORK TO BE FURNISHED AND INSTALLED BY CONTRACTOR. ALL ROUGH-IN PIPING AND FINAL CONNECTIONS TO KITCHEN EQUIPMENT SHALL BE MADE BY THE CONTRACTOR UNLESS OTHERWISE NOTED.
14. REFER TO MECHANICAL SHEETS FOR HVAC AND HOOD PUMPING REQUIREMENTS.
15. ALL GAS LINES SHALL BE SUPPORTED SEE SPECS.
16. ALL FLOOR SINKS AND FLOOR DRAINS IN TRAFFIC AREAS SHALL BE INSTALLED FLUSH TO FLOOR SURFACE.
17. PROVIDE WATER HAMMER ARRESTOR FOR ALL HAND SINKS AND URINAL WATER LINES.
18. PROVIDE AIR GAPS FOR INDIRECT DRAINS AS REQUIRED BY CODE. AIR GAP SHALL BE MINIMUM 2 TIMES THE DIAMETER OF THE INDIRECT DRAIN.
19. PRIOR TO COMMENCING WORK ON THIS PROJECT, VERIFY DEPTH, SIZE, LOCATION AND CONDITION OF ALL EXISTING UTILITIES IN FIELD. SHOULD CONDITIONS EXIST OTHER THAN THOSE INDICATED WHICH WOULD CAUSE THE DESIGN TO BE ALTERED, CONTRACTOR SHALL NOTIFY OWNER IMMEDIATELY.
20. COORDINATE INSTALLATION OF PUMPING WORK WITH ALL OTHER TRADES SO AS TO AVOID UNNECESSARY DELAY OR INTERFERENCES. CONTRACTOR SHALL REVIEW ARCHITECTURAL AND EQUIPMENT SHEETS.
21. REMOVE AND INSTALL ALL AIRFLOW PROTECTION DEVICES REQUIRED BY AGENCIES HAVING JURISDICTION. BACKFLOW DEVICES REQUIRING TESTING SHALL BE INSTALLED NO HIGHER THAN 5'-0" A.F.F.
22. PROVIDE CONDENSATE DRAIN FROM A/C UNITS TO APPROVED DRAIN. GAS PIPING TO UNITS AND ALL FINAL CONNECTIONS REQUIRED FOR OPERATION.
23. THE OWNER OR KITCHEN EQUIPMENT SUPPLIER MAY SUBSTITUTE EQUIPMENT OR THE EQUIPMENT MAY VARY FROM WHAT IS SHOWN. THEREFORE, VERIFY ALL CRITICAL DIMENSIONS WITH THE OWNER PRIOR TO CONSTRUCTION. FAILURE OF THE CONTRACTOR TO VERIFY THESE DIMENSIONS SHALL PLACE THE RESPONSIBILITY FOR ANY SUBSEQUENT RELOCATION DIRECTLY UPON THE CONTRACTOR.
24. ALL WATER LINES SHALL BE RIN OVERHEAD UNLESS OTHERWISE NOTED.
25. ALL WATER LINES SHALL BE FLUSHED PRIOR TO CONNECTING ANY FIXTURES OR EQUIPMENT.
26. PROVIDE EXPANSION PLATES AND SILLCOCK SEALANT AT ALL UTILITY PENETRATIONS INTO WALLS, CEILINGS, AND FLOORS. DO NOT USE SHIMS OR EXPANSION FOAMS FOR SEALANT.
27. CIPC SCHEDULE 40 WASTE PIPE CAN BE SUBSTITUTED FOR BLACK IRON WASTE PIPE WHERE ALLOWED BY LOCAL MUNICIPALITIES.
28. PEX PLASTIC TUBING AND FITTING CAN BE USED AS AN OPTION. ALL INSTALLATION SHALL BE INSTALLED IN ACCORDANCE WITH THE MANUFACTURER'S INSTALLATION INSTRUCTIONS AND SHALL COMPLY WITH ALL CURRENT STATE AND LOCAL CODES AND LAWS.

**GENERAL NOTES**

GREASE INTERCEPTOR SIZING	
BEHLS	INTERCEPTOR VOLUME GALS.
8	500
21	750
35	1000
17	1500
216	2000
307	2500
342	3000
400	4000
576	5000

CONTRACTOR SHALL INSTALL (1) 1,000 GALLON INTERCEPTOR.

CONTRACTOR SHALL INSTALL A MINIMUM 1,000 GALLON GREASE INTERCEPTOR. SIZE AND INSTALLATION BASED ON 2013 WASHINGTON SUBURBAN SANITARY COMMISSION PLUMBING AND TIE-IN SPEC CODES.

**GREASE INTERCEPTOR SIZING**

SYMBOLS	ABBREV.	DESCRIPTION
YARD BOX	Y.B.	YARD BOX
ROOF DRAIN	R.D.	ROOF DRAIN
ACCESS PANEL	A.P.	ACCESS PANEL
VENT THRU ROOF	V.T.R.	VENT THRU ROOF
VENT BELOW FLOOR	V.B.F.	VENT BELOW FLOOR
UTR	UTR	UP THRU ROOF
WIRED CLAY PIPE	V.C.P.	WIRED CLAY PIPE
CAST IRON	C.I.	CAST IRON
ASBESTOS CEMENT PIPE	A.C.P.	ASBESTOS CEMENT PIPE
NEW	(N)	NEW
EXISTING	(E)	EXISTING
FLOOR DRAIN	F.D.	FLOOR DRAIN
HUB DRAIN	H.D.	HUB DRAIN
OVERFLOW DRAIN	O.F.D.	OVERFLOW DRAIN
FLOOR SINK	F.S.	FLOOR SINK
GAS LINE	G.L.	GAS LINE
ABOVE FINISHED FLOOR	A.F.F.	ABOVE FINISHED FLOOR
PLUMBING EQUIPMENT DESIGNATION	(K-1) (1000)	PLUMBING EQUIPMENT DESIGNATION
KITCHEN EQUIPMENT NUMBER REFER TO KITCHEN EQUIP. DRAWINGS FOR DESCRIPTION	SS	KITCHEN EQUIP. NUMBER REFER TO KITCHEN EQUIP. DRAWINGS FOR DESCRIPTION
SOIL OR WASTE (SANITARY)/ WASTE STUB	SW	SOIL OR WASTE (SANITARY)/ WASTE STUB
COLD WATER / CW STUB	CW	COLD WATER / CW STUB
HOT WATER / HW STUB	HW	HOT WATER / HW STUB
HOT WATER RETURN	H.W.R.	HOT WATER RETURN
SANITARY VENT	V.	SANITARY VENT
CONDENSATE DRAIN	S.D.	CONDENSATE DRAIN
FLOOR CLEANOUT OR CLEANOUT TO GRADE	F.C.O.	FLOOR CLEANOUT OR CLEANOUT TO GRADE
WALL CLEANOUT	W.C.O.	WALL CLEANOUT
PREHEATED TEMPERATURE WATER	P.T.W.	PREHEATED TEMPERATURE WATER
HOSE BIBB	H.B.	HOSE BIBB
SHUT-OFF GATE VALVE	S.O.V.	SHUT-OFF GATE VALVE
SHUT-OFF GAS COCK	S.G.C.	SHUT-OFF GAS COCK
CHECK VALVE	C.V.	CHECK VALVE
PRESS-TEMPERATURE RELIEF VALVE	P.T.R.V.	PRESS-TEMPERATURE RELIEF VALVE
COLD WATER BELOW GRADE	C.W.	COLD WATER BELOW GRADE
EXTENSION CLEAN OUT	E.C.O.	EXTENSION CLEAN OUT
BACK FLOW PREVENTER	B.F.P.	BACK FLOW PREVENTER
UNLESS OTHERWISE NOTED	F.U.	UNLESS OTHERWISE NOTED
POLYVINYLCHLORIDE	P.V.C.	POLYVINYLCHLORIDE
EMERGENCY	EMER	EMERGENCY

**PLUMBING LEGEND**

**NOT USED**

ITEM	FIXTURE	SOIL OR WASTE	VENT	COLD WATER	HOT WATER	TEMPD WATER	DESCRIPTION	MANUFACTURER / MODEL NUMBER
(E.C.O. 1)	EXTENSION CLEANOUT	-	-	-	-	-	CAST IRON CLEANOUT WITH THREADED ADJUSTABLE HOUSING. ROUND SCRAMATED HEAVY CAST IRON COVER.	JOSAM / MODEL: 69000 WAGE / MODEL: 6900Z ZURN / MODEL: Z-1400
(F.S. 1)	FLOOR SINK	4"	2"	-	-	-	LIGHT DUTY ACO RESISTANCE WHITE PVC FLOOR SINK WITH 2" SQUARE WHITE PVC HALF GRATE AND STAINLESS STEEL BRASS BUBBLE WITH FINISH BRASS P.V.C. 1/2" SQUARE FLOOR SINK 6" DEEP WITH ALUMINUM DOME STRAINER AND NICKEL BRASS COVER.	SQUOX / MODEL: 881-4-PND SQUOX / MODEL: 881-4-PND
(F.S. 2)	FLOOR SINK	4"	2"	-	-	-	LIGHT DUTY ADJUSTABLE PVC WITH THREADED ADAPTOR AND 5" DIAMETER NICKEL BRONZE CAST IRON CLEANOUT WITH THREADED ADJUSTABLE HOUSING. ROUND SCRAMATED HEAVY CAST IRON COVER.	ZURN / MODEL: F129210 ZURN / MODEL: F129210 OATEV / MODEL: 72000
(F.D. 1)	FLOOR DRAIN	3"	2"	-	-	-	CAST IRON CLEANOUT WITH INTEGRAL VACUUM BREAKER. BRONZE CASING AND NICKEL BRASS BOX.	JOSAM / MODEL: 69000 WAGE / MODEL: 6900Z ZURN / MODEL: Z-1400
(F.C.O. 1)	FLOOR CLEANOUT	-	-	-	-	-	CAST IRON CLEANOUT WITH INTEGRAL VACUUM BREAKER. BRONZE CASING AND NICKEL BRASS BOX.	JOSAM / MODEL: 69010 WAGE / MODEL: 69010 ZURN / MODEL: Z-1448-BP
(H.B. 1)	HOSE BIBB	-	-	3/4"	-	-	NON-RESEAL WALL MOUNTED WITH INTEGRAL VACUUM BREAKER. BRONZE CASING AND NICKEL BRASS BOX.	JOSAM / MODEL: 69000 WAGE / MODEL: 6900Z ZURN / MODEL: Z-1400
(W.C. 1)	WALL CLEANOUT	-	-	-	-	-	WHITE WITEROUS CHINA WALL HUNG. TOP INLET. ADA COMPLIANT. 1/8 GPF. WITH WALL HANGER.	AM. STD. - WASHROOM / 6690, 625 SILKOW WEIHS 1000 1801-41-13-ES-S
(W.C. 2)	WATER CLOSET	4"	2"	1/2"	-	-	WHITE WITEROUS CHINA WALL HUNG. TOP INLET. ADA COMPLIANT. 1/8 GPF. WITH WALL HANGER.	AM. STD. - WASHROOM / 6690, 625 SILKOW WEIHS 1000 1801-41-13-ES-S
(U.R. 1)	URINAL	2"	1-1/2"	3/4"	-	-	WHITE WITEROUS CHINA WALL HUNG. WITH CONCEALED ARMS SUPPORT. 4" CENTERS. WITH INTEGRAL BACKFLUSH ADA ACCESSIBLE. FLAT GRATE STRAINER. BRASS WATER LINES WITH FLOOR FLANGE. 1/2" DIA. ADA COMPLIANT. SEE BR910 FOR ADA SUPPORT DETAIL.	A.S. COMPANY / MODEL: 01241, 151 CRANE / HANMICH / MODEL: 1412V
(L. 1)	LAVATORY	1-1/4"	1-1/2"	-	1/2"	-	WHITE WITEROUS CHINA WALL HUNG. WITH CONCEALED ARMS SUPPORT. 4" CENTERS. WITH INTEGRAL BACKFLUSH ADA ACCESSIBLE. FLAT GRATE STRAINER. BRASS WATER LINES WITH FLOOR FLANGE. 1/2" DIA. ADA COMPLIANT. SEE BR910 FOR ADA SUPPORT DETAIL.	A.S. COMPANY / MODEL: 01241, 151 CRANE / HANMICH / MODEL: 1412V
(S. 1)	HAND SINK	1-1/2"	1-1/2"	-	-	1/2"	WHITE WITEROUS CHINA WALL HUNG. WITH CONCEALED ARMS SUPPORT. 4" CENTERS. WITH INTEGRAL BACKFLUSH ADA ACCESSIBLE. FLAT GRATE STRAINER. BRASS WATER LINES WITH FLOOR FLANGE. 1/2" DIA. ADA COMPLIANT. SEE BR910 FOR ADA SUPPORT DETAIL.	A.S. COMPANY / MODEL: 01241, 151 CRANE / HANMICH / MODEL: 1412V
(S. 2)	MOP SINK	3"	2"	1/2"	1/2"	-	MOP SINK. APPROX. 212 X 18 X 4 1/2 IN. S.S. LEFT SIDE AND RIGHT SIDE. APPROX. 1/2" DIA. ADA COMPLIANT. SEE BR910 FOR ADA SUPPORT DETAIL.	A.S. COMPANY / MODEL: 01241, 151 CRANE / HANMICH / MODEL: 1412V
(S. 3)	3-COMP. SINK	INDIRECT	-	1/2"	1/2"	-	MOP SINK. APPROX. 212 X 18 X 4 1/2 IN. S.S. LEFT SIDE AND RIGHT SIDE. APPROX. 1/2" DIA. ADA COMPLIANT. SEE BR910 FOR ADA SUPPORT DETAIL.	A.S. COMPANY / MODEL: 01241, 151 CRANE / HANMICH / MODEL: 1412V
(S. 4)	PREP SINK	INDIRECT	-	1/2"	1/2"	-	MOP SINK. APPROX. 212 X 18 X 4 1/2 IN. S.S. LEFT SIDE AND RIGHT SIDE. APPROX. 1/2" DIA. ADA COMPLIANT. SEE BR910 FOR ADA SUPPORT DETAIL.	A.S. COMPANY / MODEL: 01241, 151 CRANE / HANMICH / MODEL: 1412V
(G.I. 1)	GREASE INTERCEPTOR	4"	-	-	-	-	JENSEN PRECAST 1,000 GALLON GREASE INTERCEPTOR WITH 9AMP LE BOX. FINAL SIZE TO BE DETERMINED BY LOCAL BUILDING AUTHORITY.	POWERS SERIES: F486 LEONARDOS SERIES: 170
(W.V. 1)	WATER VALVE	-	-	1/2"	1/2"	-	THEIRGASTIC 1/2" PTFE 300°F BRONZE BODY. STAINLESS STEEL. NYLON LINER. CHECK VALVES. SIZE PER PIPE CONNECTIONS.	POWERS SERIES: F486 LEONARDOS SERIES: 170
(W.H. 1)	WATER HEATER	-	-	1-1/4"	1-1/4"	-	GAS FIBER WATER HEATER. 60 GPM. THERMAL EFF. 70% ON. 80 GAL. STORAGE TANK. 1/2" NPT. VALVE. ELECTRONIC IGNITION SYSTEM AND ELECTRONIC CONTROLS. CMR 800-475-1985. Option #1 for National Appliance Price & Service.	POWERS SERIES: F486 LEONARDOS SERIES: 170
(E.T. 1)	EXPANSION TANK	-	-	3/4"	-	-	EXPANSION TANK. STEEL. EXPANSION MEMBRANE 190 PSI. 160" F. 12 GALLON CAPACITY.	POWERS SERIES: F486 LEONARDOS SERIES: 170
(B.F.P. 1)	BACKFLOW PREVENTER	-	-	VERIFY	-	-	REDUCED PRESSURE ZONE BACKFLOW PREVENTER. CAST BRONZE. CONSTRUCTION WITH QUARTER TURN FULL PORT BALL VALVES AND BRASS STRAINER.	POWERS SERIES: F486 LEONARDOS SERIES: 170
(S.A. 1)	SHOCK ABSORBER	-	-	1/2"	-	-	STAINLESS STEEL CASING WITH STAINLESS STEEL BELOW. PRE-CHARGED WITH NITROGEN. SIZED PER PLUMBING.	POWERS SERIES: F486 LEONARDOS SERIES: 170
(H.O. 1)	REVERSE OSMOSIS	INDIRECT	-	1/2"	-	-	BRASS GASKETS. FILTER SYSTEM. BY OWNER. DETAIL 9P98.0.	POWERS SERIES: F486 LEONARDOS SERIES: 170
(H.D. 1)	HUB DRAIN	3"	2"	-	-	-	CAST IRON DEEP SEAL P-TRAP WITH FUNNEL. NO HUB OUTLET AND BRASS GASKETED CLEANOUT FLUG.	POWERS SERIES: F486 LEONARDOS SERIES: 170
(B.F.P. 2)	BACKFLOW PREVENTER (EQUIPMENT)	-	-	VERIFY	-	-	DUAL CHECK VALVES - BRONZE BODY. STAINLESS STEEL SPRINGS. SILICONE DISC. PLASTIC DISC MODULES.	POWERS SERIES: F486 LEONARDOS SERIES: 170

**PLUMBING SCHEDULE**

1300 HOLLTON LANE  
TAKOMA PARK, MD 20912

**LIVE MAS**  
MEDICAL - MODIFIED

**PLUMBING SCHEDULES AND NOTES**

**P1.0**

1-04-16

DESIGNED BY: MAS  
CHECKED BY: AMP

Professional Certification:  
I, **Mark D. McCluggage**, hereby certify that I am a duly licensed professional engineer under the laws of the State of Maryland. License No. 42320  
Expiration Date: 01/02/2017

15025 000

ADDRESS CHANGE 01/04/2016

DATE: JULY 19, 2015  
BUILDING TYPE: MED-40-MOD  
PLAN VERSION: JUNE 2015  
SITE NUMBER:  
ENTRY NUMBER:

MARK D. MCCLUGGAGE AIA, CCS  
1825 E. Douglas Wichita, KS 67211  
Tel: (316) 265-5646  
Fax: (316) 265-5646  
www.gimv.com

**DEVITA & ASSOCIATES**  
PO Box 1596  
Greenville, SC 29602  
Phone: 864-232-6642  
Fax: 864-242-4875  
E-Mail: Corp@devita.com

DAI PROJECT: 15025-28

**GREASE WASTE LOAD CALC.**

MARK	FIXTURE/EQUIPMENT	QUANTITY	WASTE	
			WASTE F.U. PER FIXTURE	TOTAL F.U. PER FIXTURE
FD-1	FLOOR DRAIN	4	6.0	24.0
FS-1	FLOOR SINK	3	8.0	24.0
FS-2	FLOOR SINK	1	8.0	8.0
S-2	MOP SINK	1	3.0	3.0
TOTALS				59.0

MAXIMUM WASTE DEMAND AT 59.0 D.F.U. = 4" GREASE WASTE

**SANITARY SEWER LOAD CALC.**

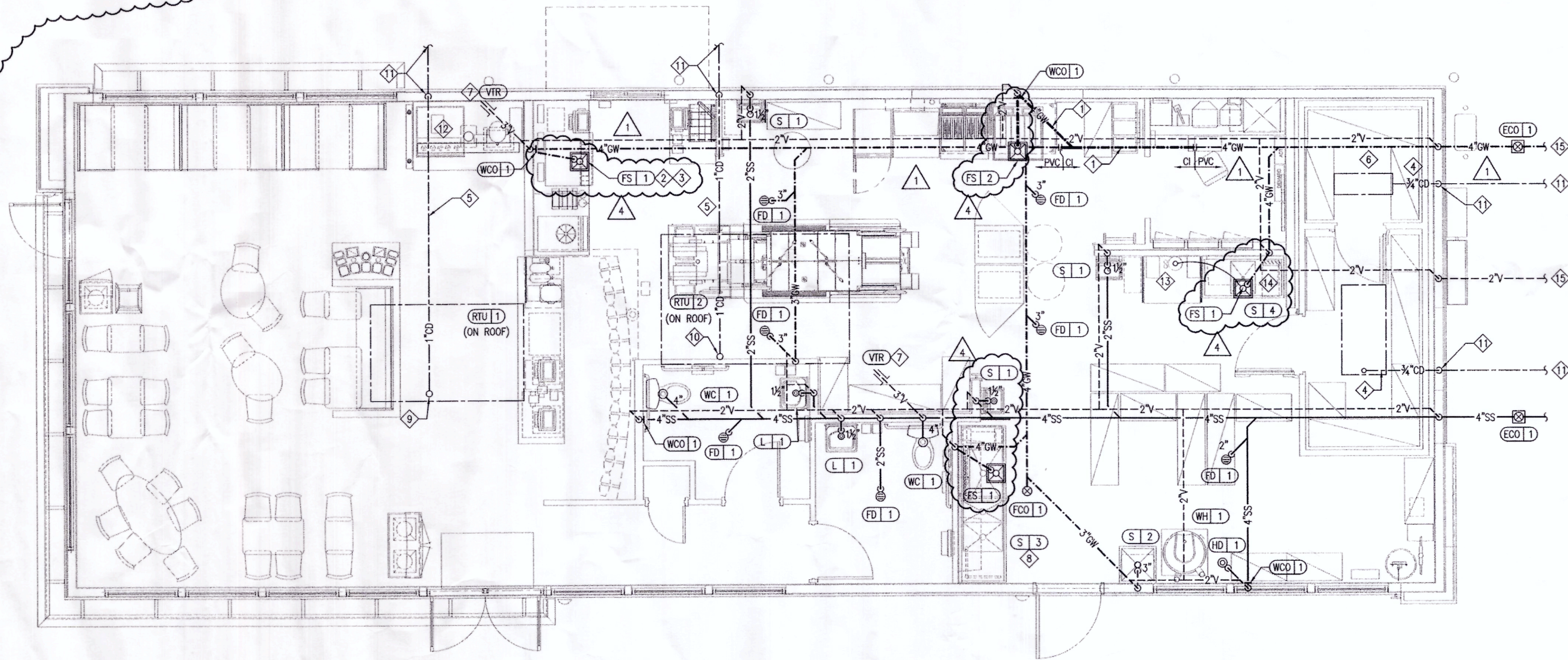
MARK	FIXTURE/EQUIPMENT	QUANTITY	WASTE	
			WASTE F.U. PER FIXTURE	TOTAL F.U. PER FIXTURE
FD-1	FLOOR DRAIN	3	6.0	18.0
HD-1	HUB DRAIN	1	6.0	6.0
WC-1	ADA WATER CLOSET	2	6.0	12.0
L-1	LAVATORY	2	2.0	4.0
S-1	HAND SINK	2	2.0	4.0
TOTALS				44.0

MAXIMUM WASTE DEMAND AT 44.0 D.F.U. = 4" SANITARY SEWER WASTE

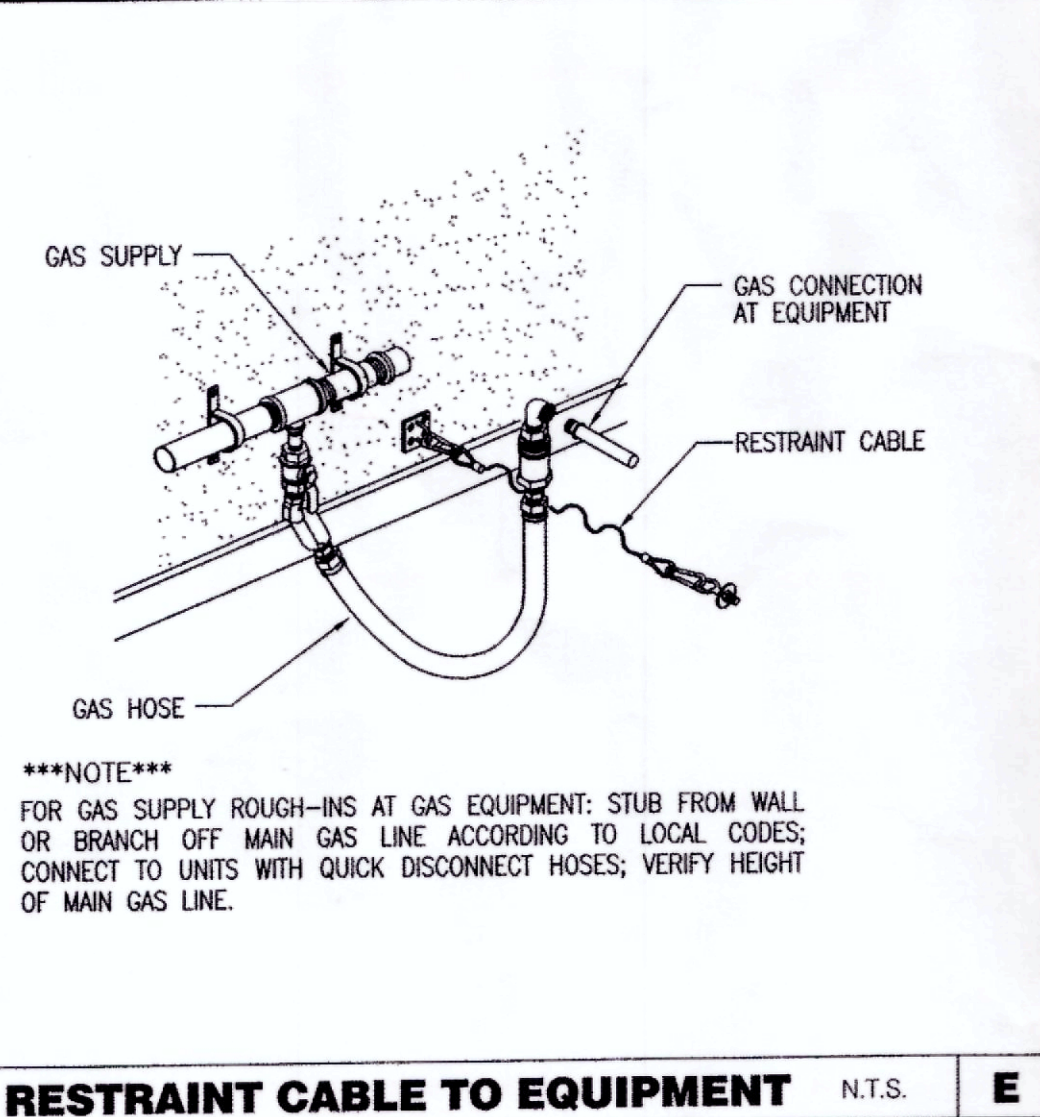
**GREASE INTERCEPTOR SIZING**

DFU'S	INTERCEPTOR VOLUME GALS.
8	500
21	750
35	1000
90	1250
172	1500
216	2000
307	2500
342	3000
428	4000
576	5000

CONTRACTOR SHALL INSTALL A MINIMUM 1250 GALLON GREASE INTERCEPTOR, SIZE AND INSTALLATION BASED ON 2006 UNIFORM PLUMBING WITH 2015 WASHINGTON SUBURBAN SANITARY COMMISSION PLUMBING AND FUEL GAS CODE.

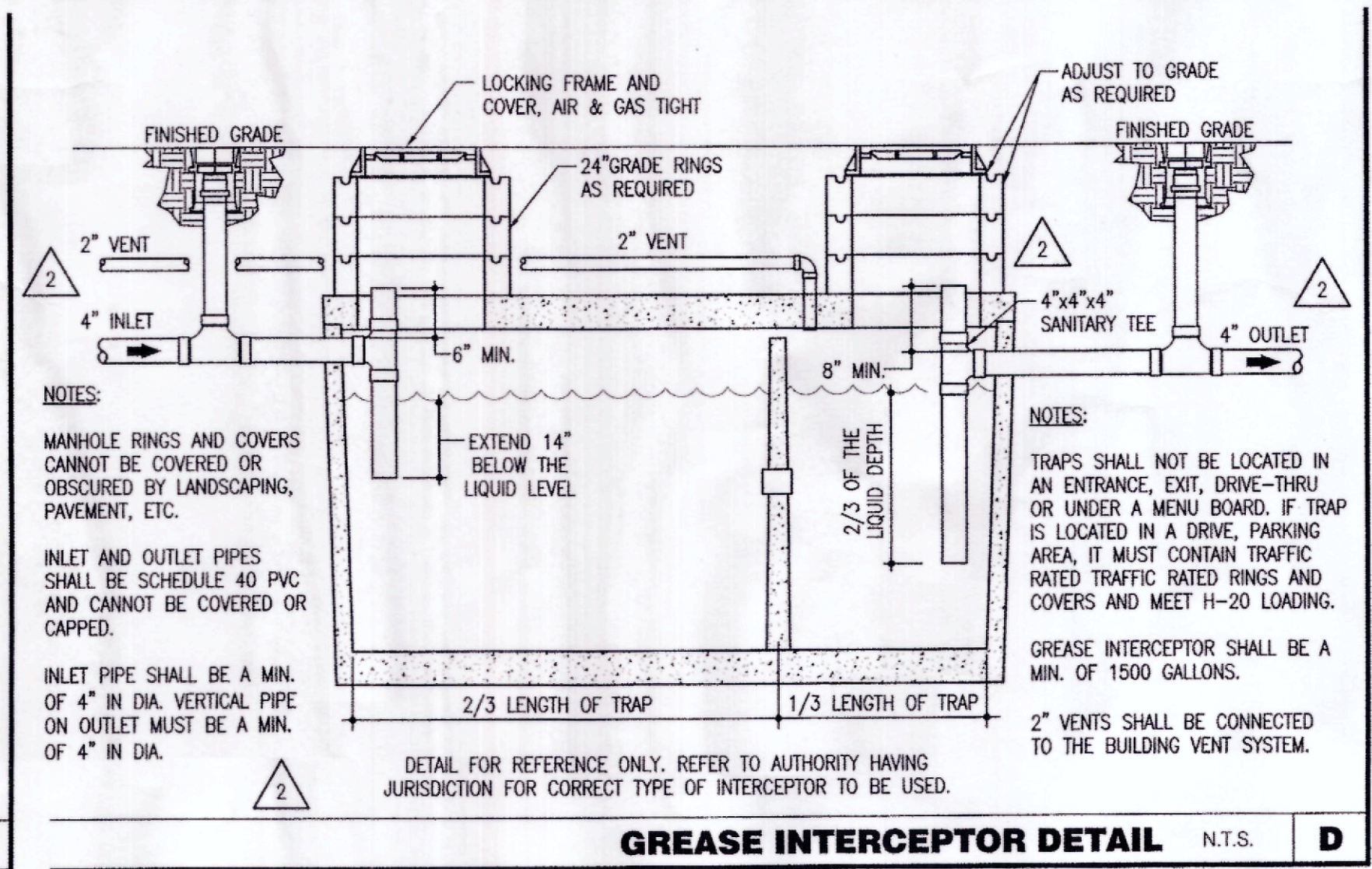


**WASTE & VENT PLAN 1/4"=1'-0" A**



\*\*\*NOTE\*\*\*  
FOR GAS SUPPLY ROUGH-INS AT GAS EQUIPMENT: STUB FROM WALL OR BRANCH OFF MAIN GAS LINE ACCORDING TO LOCAL CODES; CONNECT TO UNITS WITH QUICK DISCONNECT HOSES; VERIFY HEIGHT OF MAIN GAS LINE.

**RESTRAINT CABLE TO EQUIPMENT N.T.S. E**



NOTES:  
MANHOLE RINGS AND COVERS CANNOT BE COVERED OR OBSCURED BY LANDSCAPING, PAVEMENT, ETC.  
INLET AND OUTLET PIPES SHALL BE SCHEDULE 40 PVC AND CANNOT BE COVERED OR CAPPED.  
INLET PIPE SHALL BE A MIN. OF 4" IN DIA. VERTICAL PIPE ON OUTLET MUST BE A MIN. OF 4" IN DIA.

NOTES:  
TRAPS SHALL NOT BE LOCATED IN AN ENTRANCE, EXIT, DRIVE-THRU OR UNDER A MENU BOARD. IF TRAP IS LOCATED IN A DRIVE, PARKING AREA, IT MUST CONTAIN TRAFFIC RATED TRAFFIC RATED RINGS AND COVERS AND MEET H-20 LOADING.  
GREASE INTERCEPTOR SHALL BE A MIN. OF 1500 GALLONS.  
2" VENTS SHALL BE CONNECTED TO THE BUILDING VENT SYSTEM.

**GREASE INTERCEPTOR DETAIL N.T.S. D**

- WASTE & VENT PLAN NOTES C**
- NOTIFY GENERAL CONTRACTOR OF PENETRATIONS THROUGH ROOF MEMBRANE. REFER TO ROOF PLAN FOR LOCATIONS.
  - REFER TO RISER DIAGRAM ON SHEET P5.0 FOR ALL WASTE AND VENT SIZES.
  - SEE ARCHITECTURAL PLANS FOR DOWNSPOUT LOCATIONS.
  - VERIFY WITH THE LOCAL BUILDING AUTHORITY THAT CONDENSATE DRAINAGE CAN BE ROUTED TO THE MOP SINK.

- UNDERGROUND GREASE WASTE PIPE SHALL BE HUB CAST IRON PIPE FOR THE FIRST 10 FEET FROM CONNECTION TO FLOOR SINK FS-2, OUTWARD.
- PROVIDE CONDENSATE LINE AND DRAIN LINE FROM ICE MACHINE TO FLOOR SINK, PROVIDE AIR GAP PER LOCAL CODE.
- PROVIDE WASTE LINES FROM BEVERAGE UNIT TO FLOOR SINK, PROVIDE AIR GAP PER LOCAL CODE.
- PROVIDE 3/4" COPPER CONDENSATE FROM COOLER/FREEZER EVAPORATOR DRAIN PROVIDED BY VENDOR TO OUTFALL TO THE OUTSIDE (HEAT ROPE IS SUPPLIED WITH FREEZER CONDENSATE). PIPE 3/4" DRAIN FROM REVERSE OSMOSIS SYSTEM TO FLOOR SINK.
- COPPER CONDENSATE DRAIN FROM HVAC UNITS ON ROOF, RUN ABOVE CEILING TO DRYWELL. PIPING SHALL SLOPE 1/4" PER FOOT AND SHALL BE INSULATED WITH 1" CLOSED CELLULAR INSULATION. REFER TO RISER DIAGRAM ON SHEET P5.0 FOR PIPE SIZES.
- DRAIN LINES TO INLET OF EXTERIOR GREASE INTERCEPTOR AND OUTLET OF INTERCEPTOR TO CONNECTION AT SANITARY MAIN SHALL BE SCHEDULE 40 PVC DWV OR AS REQUIRED BY THE AUTHORITY HAVING JURISDICTION.
- 3" VENT UP THROUGH ROOF.
- PIPE WASTE FROM 3-COMPARTMENT SINK TO FLOOR SINK WITH AIR GAP PER CODE. ROUTE DRAIN FROM EACH COMPARTMENT TO FLOOR SINK INDIVIDUALLY.
- 1" CONDENSATE DRAIN DOWN FROM RTU-1. SEE DETAIL 13 ON DRAWING P6.0.
- 1" CONDENSATE DRAIN DOWN FROM RTU-2. SEE DETAIL 13 ON DRAWING P6.0.
- 2" CONDENSATE DRAIN PIPE DOWN TO DRYWELL. IF REQUIRED RUN CONDENSATE PIPING TO EXTERIOR DRYWELL, RETENTION AREA OR STORM SEWER AS DIRECTED BY THE AUTHORITY HAVING JURISDICTION.
- RUN DRAIN LINE FROM S/S DRINK MACHINE THRU WALL OPENING TO OUTFALL AT FLOOR SINK BENEATH D/T DRINK MACHINE.
- 3/4" DRAIN FOR REVERSE OSMOSIS.
- PIPE WASTE FROM PREP SINK TO FLOOR SINK WITH AIR GAP PER CODE.
- ROUTE TO GREASE INTERCEPTOR. SEE CIVIL DRAWINGS FOR EXACT LOCATION.

**KEY NOTES B**

DAI PROJECT: 15002-26

DESIGNED BY: MAS  
CHECKED BY: AMP  
Professional Certification.

I hereby certify that these documents were prepared or approved by me, and that I am a duly licensed professional engineer under the laws of the State of Maryland License No. 29285  
Expiration Date: 06/10/2017



FOR REVISION 4 ONLY  
15025.000

- ADDRESS CHANGE 01.04.2016
- CIVIL COORDINATION 04.01.2016
- HEALTH DEPT COMMENTS 06.24.16

DATE: JULY 15, 2015  
BUILDING TYPE: MED-40-MOD  
PLAN VERSION: JUNE 2015  
SITE NUMBER: \_\_\_\_\_  
ENTITY NUMBER: \_\_\_\_\_

1300 HOLTON LANE  
TAKOMA PARK, MD 20912



**PLUMBING WASTE FLOOR PLAN**

**P2.0**

PLOT DATE: 6-27-16



### WATER FIXTURE LOAD CALCULATIONS

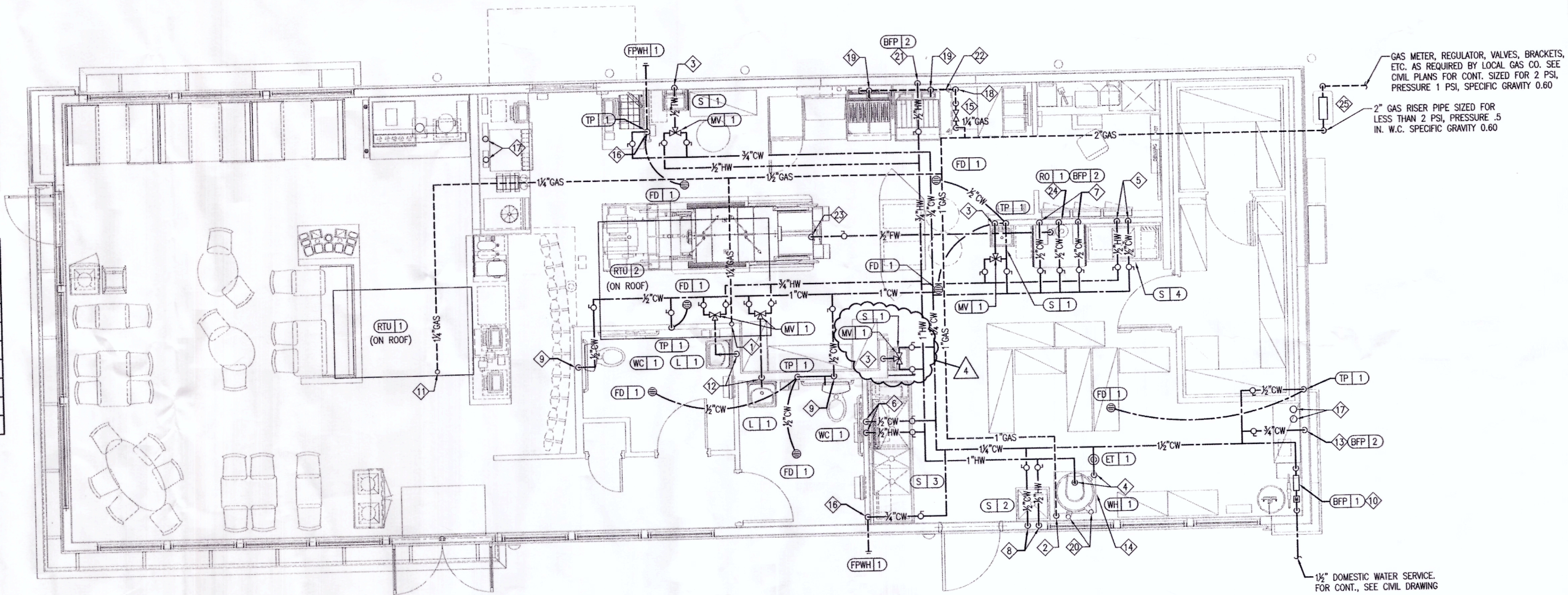
MARK	FIXTURE/EQUIPMENT	QUANTITY	WATER			TOTAL F.U. PER FIXTURE
			CW F.U. PER FIXTURE	HW F.U. PER FIXTURE	TOTAL WSFU PER TYPE	
HWC-1	ADA WATER CLOSET	2	5.0	-	5.0	10.0
L-1	LAVATORY	2	1.5	1.5	2.0	4.0
S-1	HAND SINK	2	1.5	1.5	2.0	4.0
S-2	MOP SINK	1	3.0	3.0	4.0	4.0
S-3	3 COMP. SINK	1	3.0	3.0	4.0	4.0
S-4	PREP SINK	1	1.5	1.5	2.0	2.0
FPWH-1	F.P. WALL HYDRANT	1	3.0	-	3.0	3.0
RETH-1	REETHERMALIZER	1	-	1.0	1.0	1.0
P-450	HOT WATER FILTER	2	1.0	-	1.0	2.0
P-315	REVERSE OSMOSIS	1	1.0	-	1.0	1.0
S-286	WATER FILTER	1	5.0	-	5.0	5.0
TOTALS						40.0

MAXIMUM WATER DEMAND AT 40.0 F.U. = 26.3 GPM = 1 1/2" WATER MAIN SUPPLY

### GAS DEMAND LOAD CALCULATIONS

MARK	FIXTURE/EQUIPMENT	QUANTITY	UNIT DEMAND BTUH	TOTAL DEMAND BTUH	TOTAL CFH	CONNECTION PIPE SIZE
RTU-1	ROOFTOP UNIT 1	1	120,000	120,000	120.0	3/4"
RTU-2	ROOFTOP UNIT 2	1	250,000	250,000	250.0	3/4"
C-015	FRYER	1	160,000	160,000	160.0	3/4"
C-105	REETHERMALIZER	1	110,000	110,000	110.0	3/4"
WH-1	WATER HEATER	1	120,000	120,000	120.0	3/4"
TOTAL			760,000	760.0		

2" GAS LINE REQUIRED BASED ON 150'-0" TOTAL LENGTH OF PIPE AT LESS THAN 2 PSI



**MARK D. MCCLUGGAGE AIA, CCS**  
 1225 E. Douglas Wichita, KS 67211  
 Tel: (316) 268-8877  
 Fax: (316) 268-8877  
 www.gdm.com

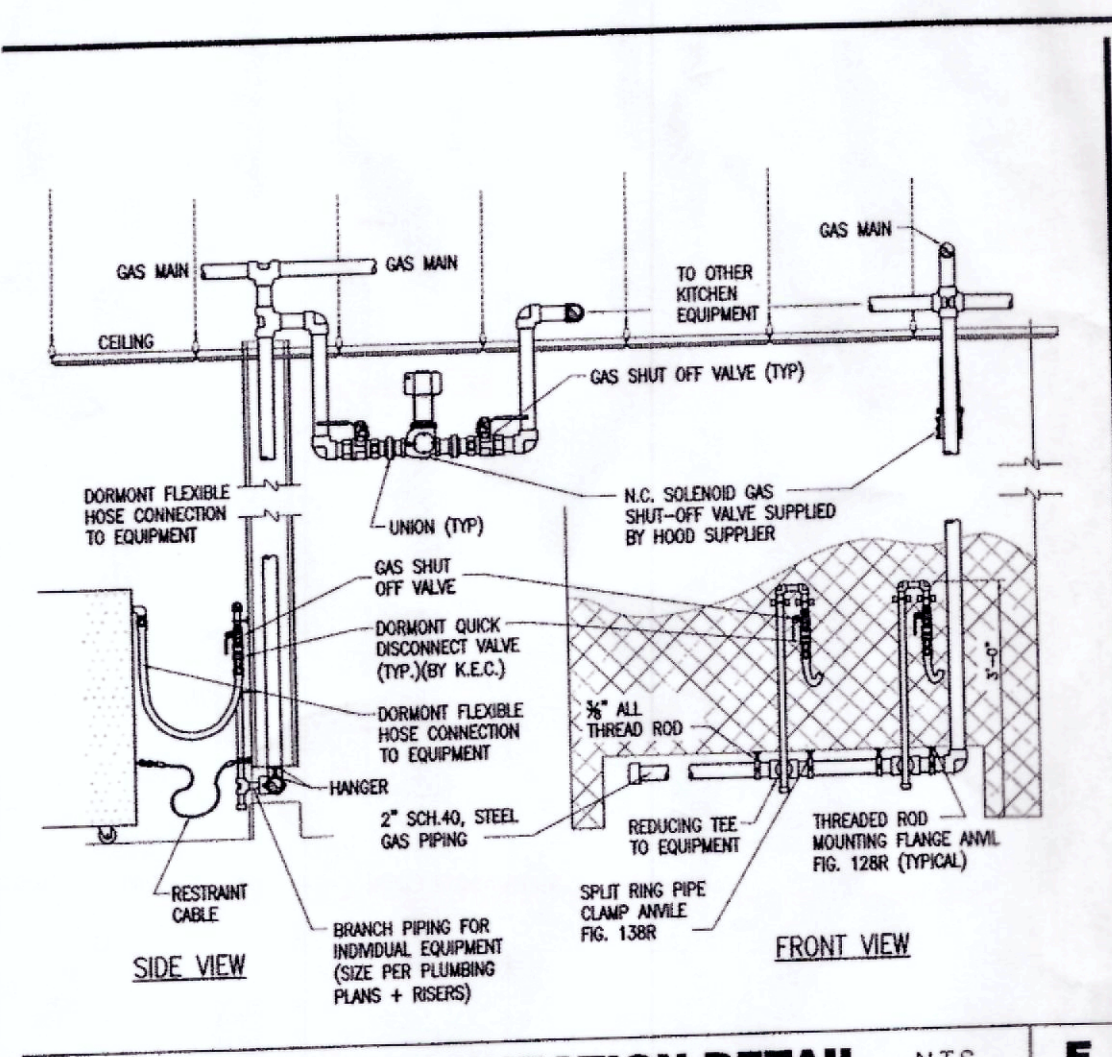
**DEVITA & ASSOCIATES**  
 PO Box 1596  
 Greenville, SC 29602  
 Phone: 864-232-6642  
 FAX: 864-242-4878  
 E-Mail: Corp@devita-inc.com

DAI PROJECT: 15002-26  
 DESIGNED BY: MAS  
 CHECKED BY: AMP  
 Professional Certification.  
 I hereby certify that these documents were prepared or approved by me, and that I am a duly licensed professional engineer under the laws of the State of Maryland License No. 29285  
 Expiration Date: 06/10/2017

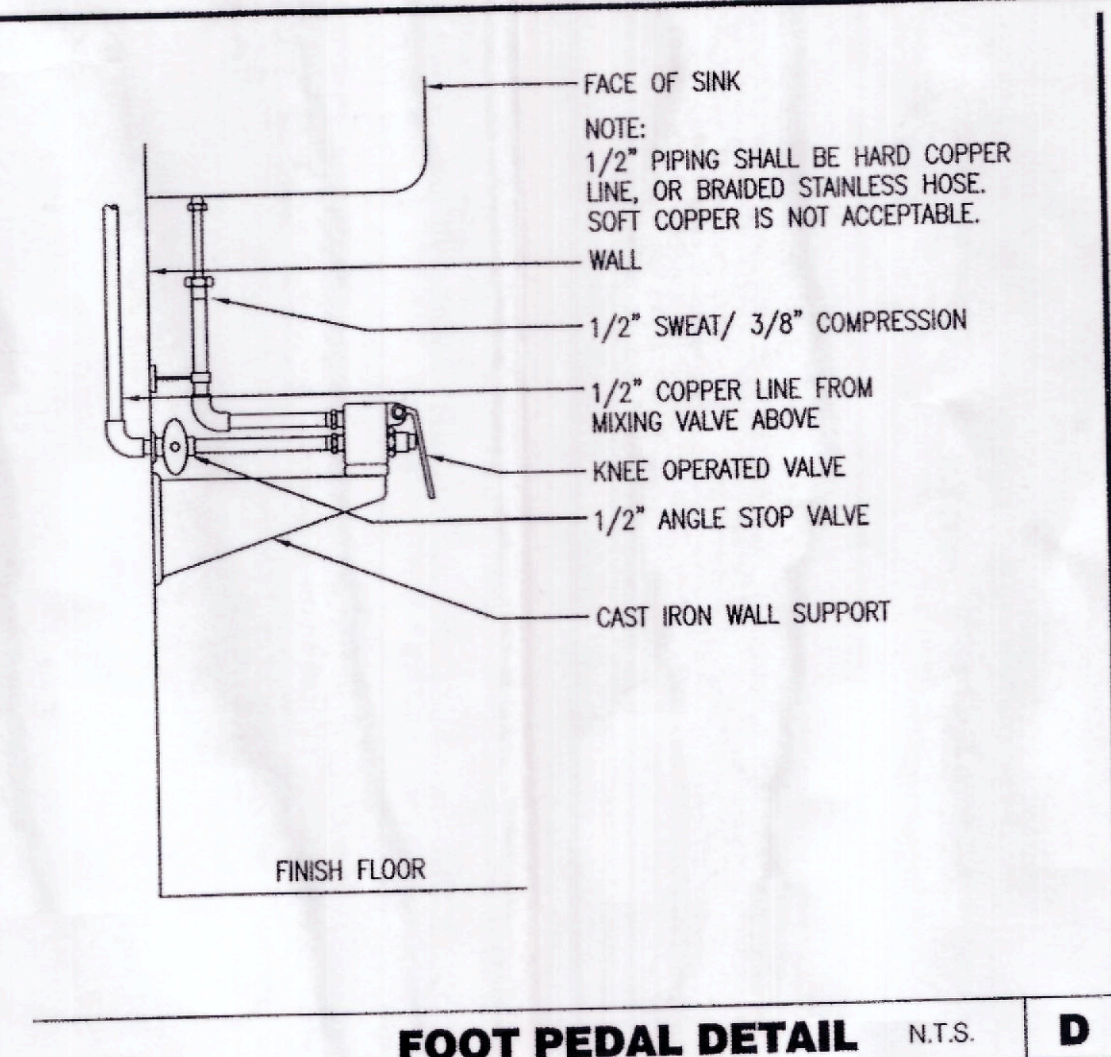
FOR REVISION 4 ONLY  
 15025.000

ADDRESS CHANGE 01.04.2016  
 HEALTH DEPT COMMENTS 06.24.16  
 DATE: JULY 15, 2015  
 BUILDING TYPE: MED-40-MOD  
 PLAN VERSION: JUNE 2015  
 SITE NUMBER:  
 ENTITY NUMBER:

### WATER & GAS PLAN 1/4"=1'-0" A



**GAS CONNECTION DETAIL** N.T.S. **E**



**FOOT PEDAL DETAIL** N.T.S. **D**

- WATER & GAS PLAN NOTES** **C**
- WATER DISTRIBUTION PIPING IS SHOWN ABOVE FINISH CEILING. UNDER SLAB DISTRIBUTION ALLOWED AT CONTRACTOR OPTION. COORDINATE ALL DETAILS.
  - NO ROOF PENETRATIONS PERMITTED WITHIN THE ROOF "WATER VALLEYS", REFER TO ROOF PLAN FOR LOCATIONS.
  - REFER TO SHEET P4.0 FOR ROUGH-IN LOCATIONS.
  - REFER TO SHEET P5.0 FOR WATER AND GAS ISOMETRIC DRAWINGS.
  - FLUSH ALL WATER SUPPLY LINES OF ALL DEBRIS AND IMPURITIES PRIOR TO CONNECTING TO WATER FILTERS.
  - PROVIDE REDUCED PRESSURE BACK FLOW TO SERVE CARBONATOR, DRAIN RELIEF TO FLOOR SINK WITH AIR GAP.

- 1 1/4" GAS UP TO RTU-2 WITH DIRT LEG, GAS COCK AND UNION.
- 1" GAS DOWN TO WATER HEATER WITH GAS COCK, DIRT LEG, UNION, AND PAINTED YELLOW.
- 1/2" TEMPERED WATER DOWN IN WALL TO HAND SINK.
- 1" HOT AND 1" COLD WATER LINES DOWN TO WATER HEATER.
- 1/2" HOT AND COLD WATER LINES DOWN IN WALL TO PREP SINK.
- 1/2" HOT AND COLD WATER LINES DOWN IN WALL TO THREE COMPARTMENT SINK.
- 1/2" COLD WATER 2"-0" A.F.F. CONNECT TO WATER FILTER FOR HOT WATER SYSTEM P-450. PROVIDE SHUT-OFF VALVE PRIOR TO CONNECTION TO THE WATER FILTER.
- 1/2" COLD AND HOT WATER DOWN IN THE WALL TO THE MOP SINK.
- 1/2" CW DOWN IN WALL TO WATER CLOSET FLUSHMETER TANK.
- METER AND REDUCED PRESSURE BACKFLOW PREVENTER PER LOCAL UTILITY REQ'S. PROVIDE SHUT-OFF VALVES AT BOTH SIDES OF METER. PIPE BFP RELIEF TO HUB DRAIN. VERIFY LOCATIONS WITH CIVIL DWGS.
- 1-1/4" GAS UP TO RTU-1 WITH DIRT LEG, GAS COCK, UNION.
- 1/2" TEMPERED WATER LINES DOWN IN WALL TO LAVATORY.
- 3/4" CW DOWN ALONG WALL TO WATER FILTER S-286.
- WATER HEATER (WH-1) PIPE CONDENSATE LINE, T & P DISCHARGE AND DRAIN PAN TO HUB DRAIN. SEE WATER DETAIL 2/P6.0.
- EMERGENCY GAS SHUT-OFF VALVE LOCATED BELOW CEILING.

- 3/4" CW DOWN IN WALL TO EXTERIOR HOSE BIBB.
- BUNDLED SYRUP LINES TO BEVERAGE DISPENSERS S-284 & S-285 AND FILTERED WATER LINES TO ICE MAKERS S-513 AND FROZEN BEVERAGE DISPENSER S-543. SEE DRAWINGS A2.0 AND P5.0.
- 1-1/4" GAS DOWN ALONG WALL TO TACO BELL COOKING EQUIPMENT. VERTICAL GAS PIPING IN WALL SHALL NOT BE RIGIDLY SECURED AND ADEQUATE PIPE PROTECTION SHALL BE PROVIDED.
- 3/4" GAS DIRT LEG W/ GAS COCK TO COOKING EQUIPMENT. PROVIDE FLEXIBLE GAS HOSE KIT FOR CONNECTION TO COOKING EQUIPMENT.
- 3" PVC EXHAUST AND INTAKE FLUES FROM WATER HEATER, PIPE THRU ROOF AS RECOMMENDED BY MANUFACTURER TO LOCATIONS SHOWN ON SHEET M2.0 SEE DETAIL 2/P6.0. SEE M2.0. NOTE 16.
- 1/2" HOT WATER DOWN IN WALL TO TB RETHERMALIZER. PROVIDE SHUT-OFF VALVE OUTSIDE OF WALL FOR CONNECTION TO RETHERMALIZER.
- RUN GAS PIPE 18" A.F.F. WITH DIRT LEGS FOR GAS HOSE KITS TO COOKING EQUIPMENT. HARD GAS LINE BEHIND COOKING EQUIPMENT SHALL NOT BE MORE THAN 6" MAX. FROM THE WALL SURFACE.
- 1/4" FILTER WATER LINE DOWN IN UTILITY CHASE OF DRY PRODUCTION LINE. PROVIDE SHUT-OFF VALVE ON FW PIPING IN CEILING NEAR CHASE.
- 1/2" COLD WATER TO REVERSE OSMOSIS FILTER P-305 AND 1/2" FILTER WATER FROM REVERSE OSMOSIS FILTER. PROVIDE SHUT-OFF VALVE ON CW PIPE PRIOR TO CONNECTION TO FILTER. SEE DETAIL 9 / P6.0.
- GAS METER REGULATOR VALVES, BRACKETS, ETC. AS REQUIRED BY LOCAL GAS CO. SEE CIVIL DRAWINGS FOR CONTINUATION.

### KEY NOTES

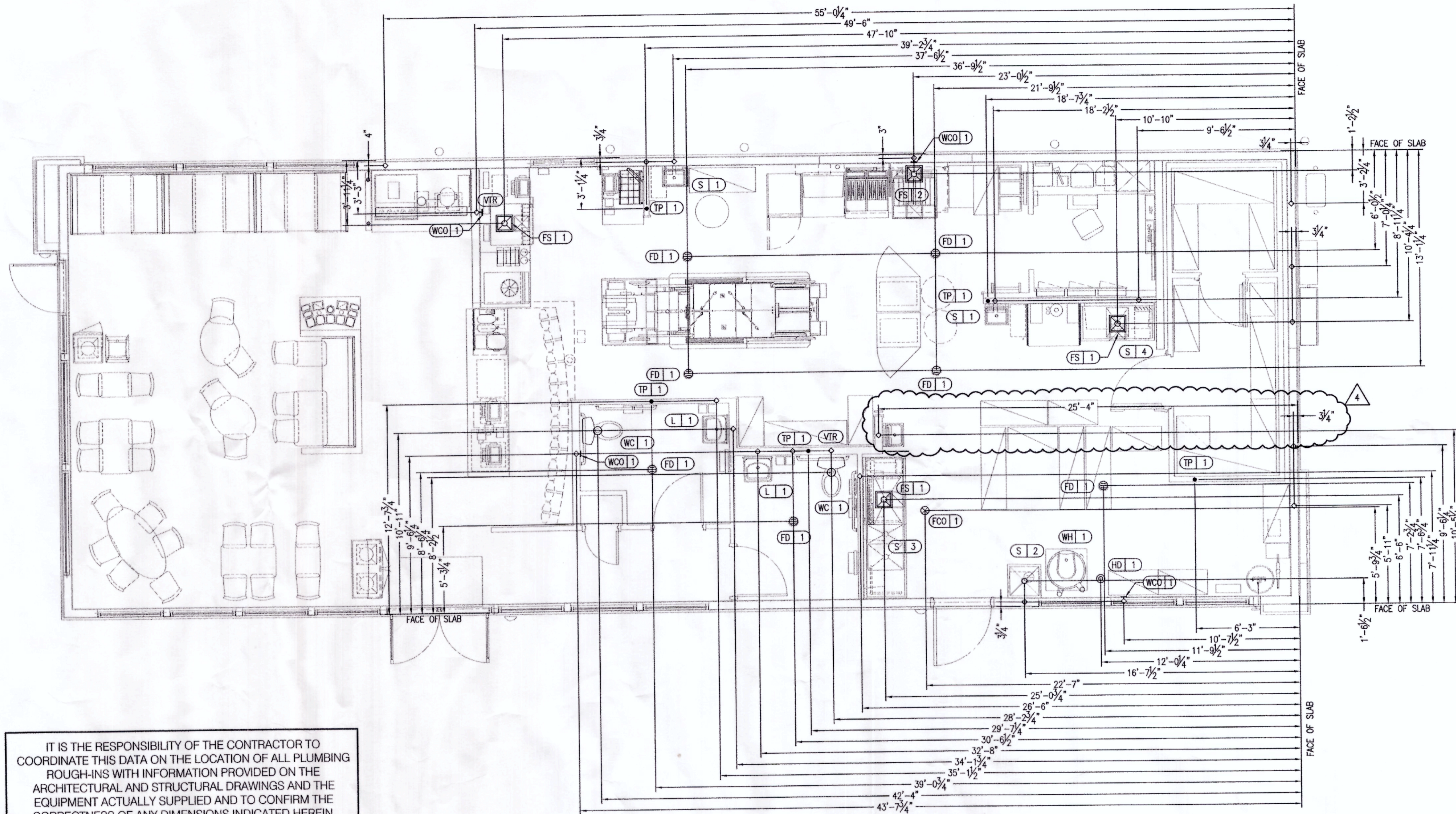
1300 HOLTON LANE  
 TAKOMA PARK, MD 20912

**LIVE MAS**  
 MEDIUM40 - MODIFIED

**PLUMBING WATER & GAS FLOOR PLAN**

**P3.0**

PLOT DATE: 6-27-16



IT IS THE RESPONSIBILITY OF THE CONTRACTOR TO COORDINATE THIS DATA ON THE LOCATION OF ALL PLUMBING ROUGH-INS WITH INFORMATION PROVIDED ON THE ARCHITECTURAL AND STRUCTURAL DRAWINGS AND THE EQUIPMENT ACTUALLY SUPPLIED AND TO CONFIRM THE CORRECTNESS OF ANY DIMENSIONS INDICATED HEREIN.

DAI PROJECT: 15002-26  
 DESIGNED BY: MAS  
 CHECKED BY: AMP  
 Professional Certification.  
 I hereby certify that these documents were prepared or approved by me, and that I am a duly licensed professional engineer under the laws of the State of Maryland License No. 29285 Expiration Date: 06/10/2017



FOR REVISION 4 ONLY  
 15025.000

- △ ADDRESS CHANGE 01.04.2016
- △ HEALTH DEPT COMMENTS 06.24.16
- △
- △
- △
- △
- △
- △
- △

DATE: JULY 15, 2015  
 BUILDING TYPE: MED-40-MOD  
 PLAN VERSION: JUNE 2015  
 SITE NUMBER: -----  
 ENTITY NUMBER: -----

**PLUMBING ROUGH-IN PLAN 1/4"=1'-0" A**

EQUIP #	EQUIPMENT ITEM	TYPE	ELEVATION	REMARKS	EQUIP #	EQUIPMENT ITEM	TYPE	ELEVATION	REMARKS
FS 1	FLOOR SINK				S 3	3-COMPARTMENT SINK FAUCET	CW/HW	+38" A.F.F.	--
FS 2	FLOOR SINK			EPOXY COATED CAST IRON	S 4	PREP SINK	W	+19" A.F.F.	--
HD 1	HUB DRAIN				S 4	PREP SINK FAUCET	CW/HW	+38" A.F.F.	--
WH 1	WATER HEATER	CW			WCO 1	WALL CLEAN OUT	CI	--	--
WH 1	WATER HEATER	G	+15" A.F.F.						
WC 1	WATER CLOSET FLUSH VALVE	CW	+29" A.F.F.	BOTH HANDICAP AND REGULAR					
UR 1	URINAL FLUSH VALVE	CW	+47" A.F.F.	WALL MOUNTED	S-513	ICE MAKER	FW	-	VIA SYRUP BUNDLE
UR 1	URINAL WASTE STUB	W	+16-1/2" A.F.F.	WALL MOUNTED	C-107	RE THERMALIZER	HW	+8" A.F.F.	
L 1	LAVATORY	TW	+20" A.F.F.		C-107	RE THERMALIZER	G	+12" A.F.F.	
L 1	LAVATORY WASTE LINE	W	+16-1/2" A.F.F.		C-048	DOUBLE OPEN FRYER	G	+12" A.F.F.	
RO 1	REVERSE OSMOSIS	CW	+84" A.F.F.						
S 1	HAND SINK	TW	+18" A.F.F.	RIM OF LAV @ +2'-8" A.F.F.	S-286	WATER FILTER SYSTEM	CW	+94" A.F.F.	INLET TO & OUTLET FROM FILTER
S 2	MOP SINK	W	-6" A.F.F.	RECESSED IN FLOOR	P-250	UTILITY CHASE FOR M.A.P.S. LINE	HW/FW	CLG.	STUB AT CLG.
S 2	MOP SINK FAUCET	CW/HW	+36" A.F.F.		P-452	HOT WATER SYSTEM	CW	+24" A.F.F.	
S 2	MOP SINK FAUCET	CW/HW	+42" A.F.F.	CLOSET MOP SINK ONLY					
S 3	3-COMPARTMENT SINK	W	+19" A.F.F.						

**PLUMBING ROUGH-IN SCHEDULE D**

- SYMBOL LEGEND C**
- HOT WATER
  - COLD WATER
  - TEMPERED WATER
  - GAS
  - ⊖ FLOOR DRAIN
  - ⊗ FLOOR SINK
  - ⊙ HUB DRAIN
  - ◆ WASTE OUTLET
  - ⊕ FLOOR CLEANOUT
  - ⊖ WALL CLEANOUT
  - FILTERED WATER
  - ◇ VENT UP FROM UNDER SLAB
  - WATER LINE THRU FLOOR.

- PLUMBING ROUGH-IN NOTES B**
- ALL DIMENSIONS TO FLOOR SINKS, FLOOR DRAINS AND HUB DRAINS ARE TO CENTER OF FIXTURE.
  - IT IS THE RESPONSIBILITY OF THE CONTRACTOR TO COORDINATE THIS DATA ON THE LOCATION OF ALL PLUMBING ROUGH-INS WITH INFORMATION PROVIDED ON THE ARCHITECTURAL AND STRUCTURAL DRAWINGS AND THE EQUIPMENT ACTUALLY SUPPLIED AND TO CONFIRM THE CORRECTNESS OF ANY DIMENSIONS INDICATED HEREIN.
- CHILLED & FILTERED.

1300 HOLTON LANE  
 TAKOMA PARK, MD 20912

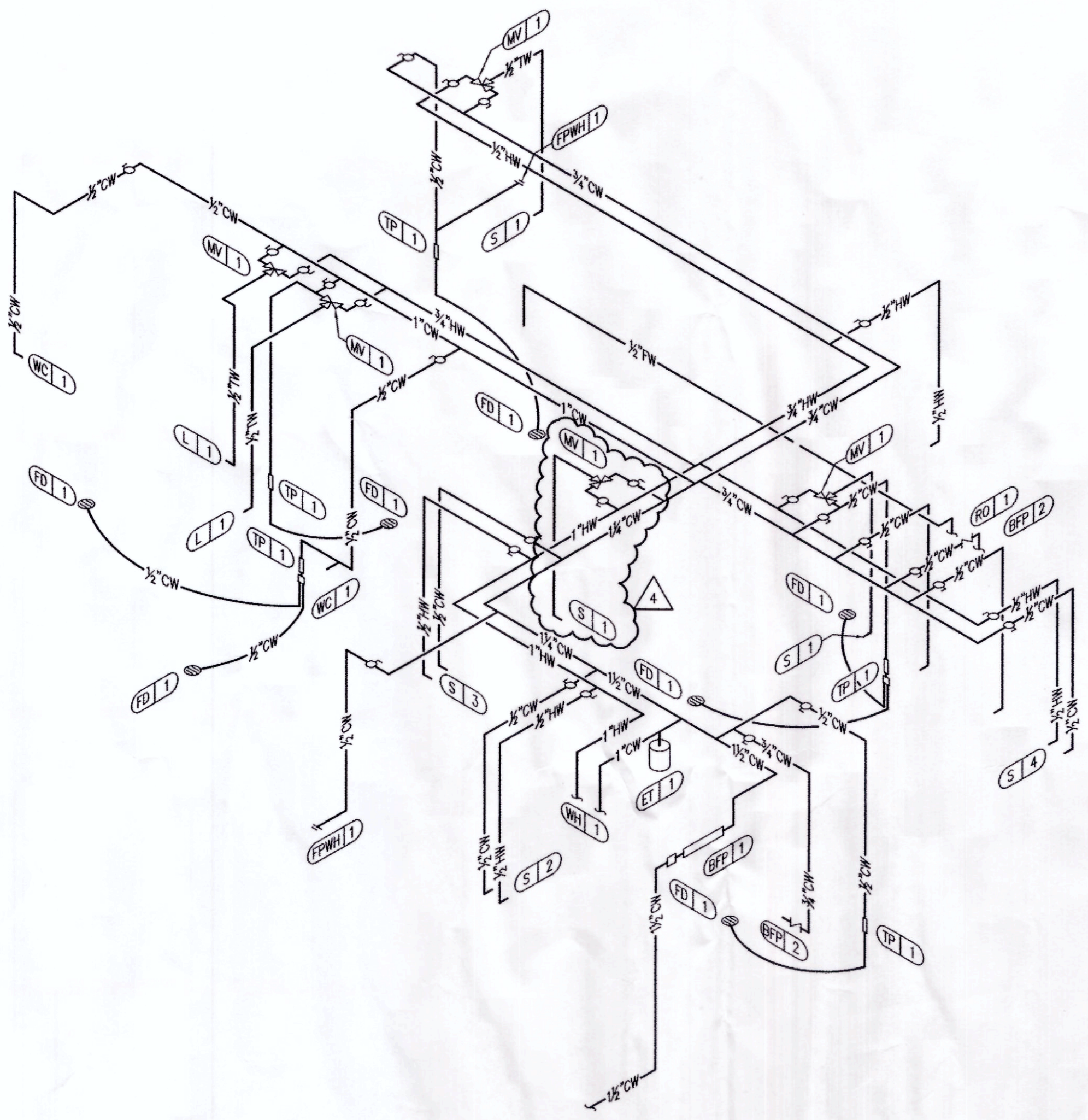


**LIVE MAS**  
 MEDIUM40 - MODIFIED

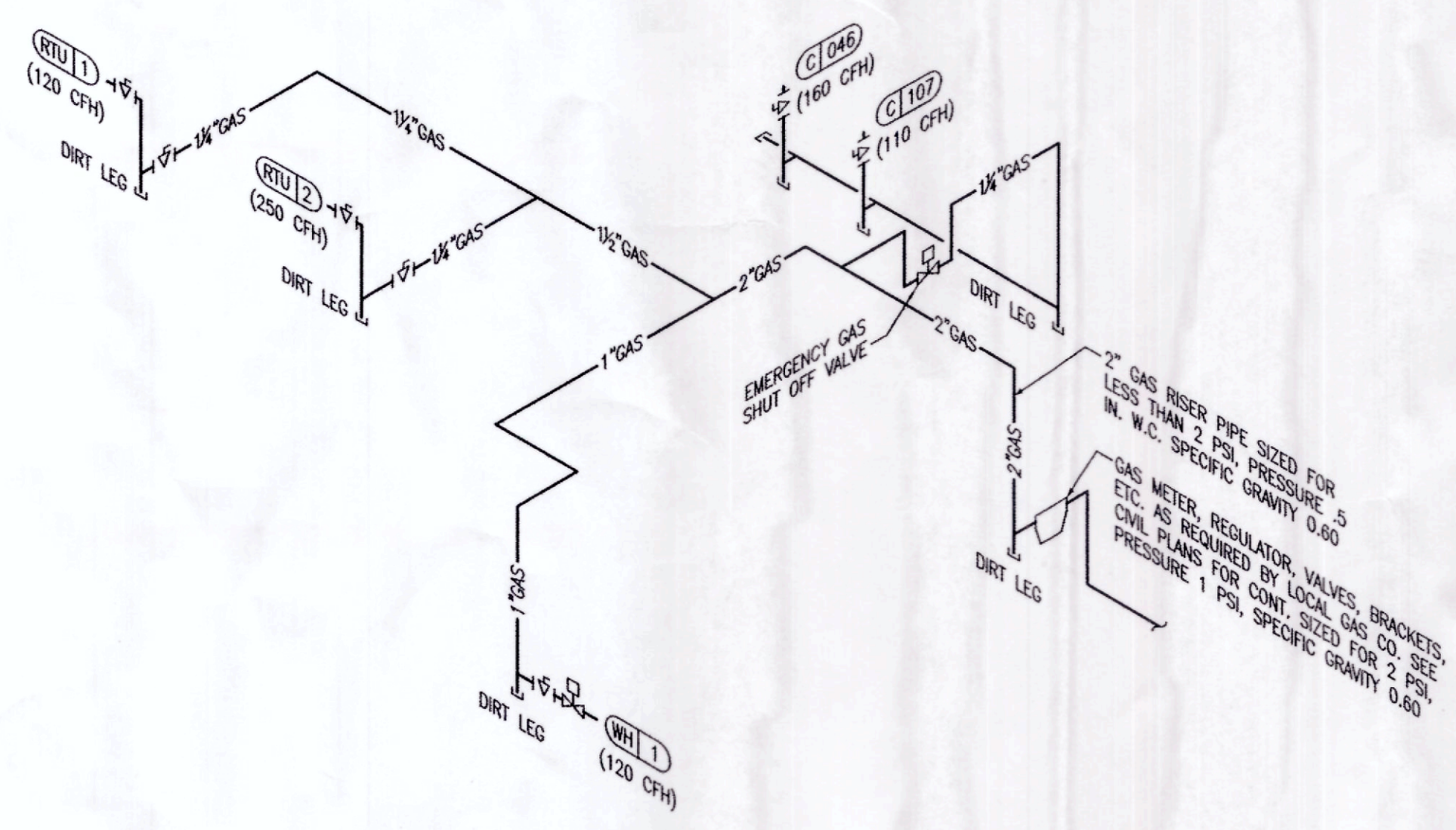
**PLUMBING ROUGH-IN FLOOR PLAN**

**P4.0**

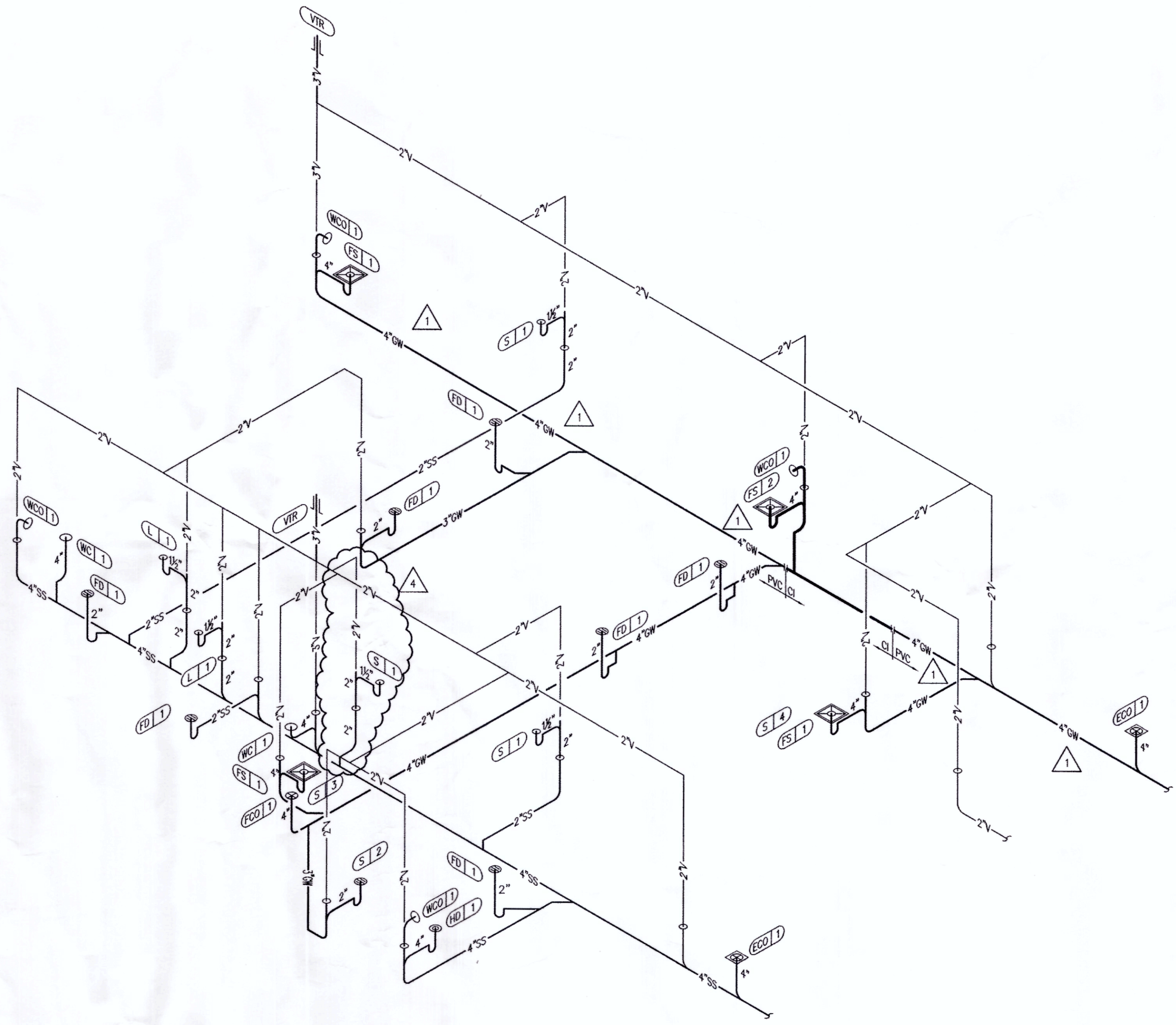
PLOT DATE: 6-27-16



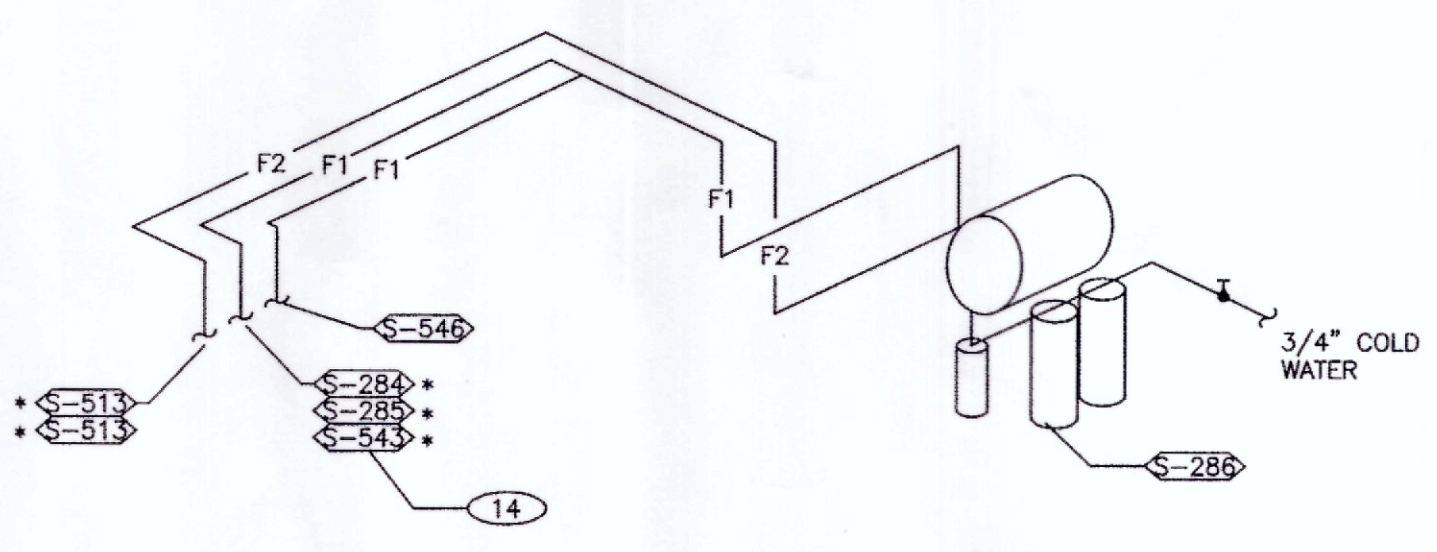
**WATER ISOMETRIC** N.T.S. **3**



**GAS ISOMETRIC** N.T.S. **4**



**WASTE AND VENT ISOMETRIC** N.T.S. **1**



- FILTERED EQUIPMENT AND LINES:**
- S-286 - WATER FILTER
- FILTERED LINE (COLD WATER)**
- S-513 - ICE MAKER - ABOVE SELF-SERVE BEVERAGE DISPENSER \*
  - S-513 - ICE MAKER - ABOVE DRIVE-THRU BEVERAGE DISPENSER \*
  - S-286 - DRIVE-THRU BEVERAGE DISPENSER \*
  - S-284 - SELF-SERVE BEVERAGE DISPENSER \*
  - S-546 - ICED TEA BREWER
  - S-543 - FROZEN BEVERAGE DISPENSER
- \* FILTERED WATER SUPPLIED VIA SYRUP BUNDLE. REFER TO 11/P6.0. SEE SCOPE OF WORK FOR RESPONSIBILITIES.

**FILTERED WATER ISOMETRIC** N.T.S. **2**



**DEVITA & ASSOCIATES**  
 PO Box 1596  
 Greenville, SC 29602  
 Phone: 864-232-6642  
 FAX: 864-242-4878  
 E-Mail: Corp@devitainc.com

**DAI PROJECT:** 15002-26  
**DESIGNED BY:** MAS  
**CHECKED BY:** AMP  
 Professional Certification.  
 I hereby certify that these documents were prepared or approved by me, and that I am a duly licensed professional engineer under the laws of the State of Maryland.  
 License No. 29285  
 Expiration Date: 06/10/2017

6-27-16  
**FOR REVISION 4 ONLY**  
**15025.000**

ADDRESS CHANGE	01.04.2016
HEALTH DEPT COMMENTS	06.24.16

**DATE:** JULY 15, 2015  
**BUILDING TYPE:** MED-40-MOD  
**PLAN VERSION:** JUNE 2015  
**SITE NUMBER:** .....  
**ENTITY NUMBER:** .....

1300 HOLTON LANE  
 TAKOMA PARK, MD 20912



**RISER DIAGRAMS**  
**P5.0**

**PLAT DATE:** 6-27-16

