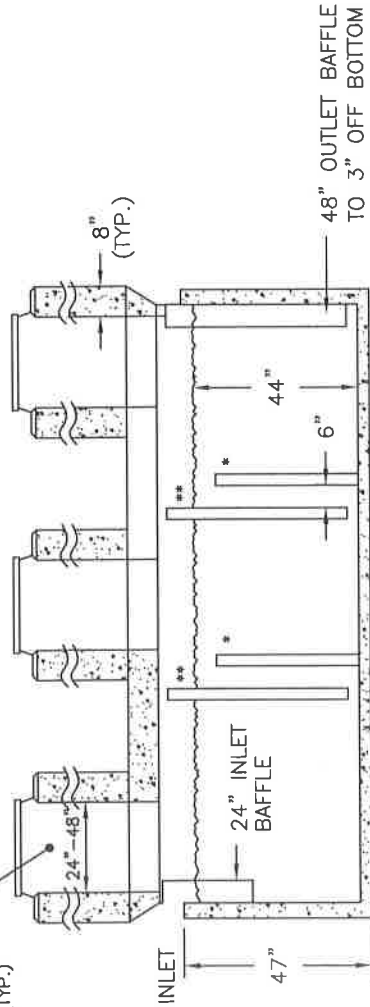


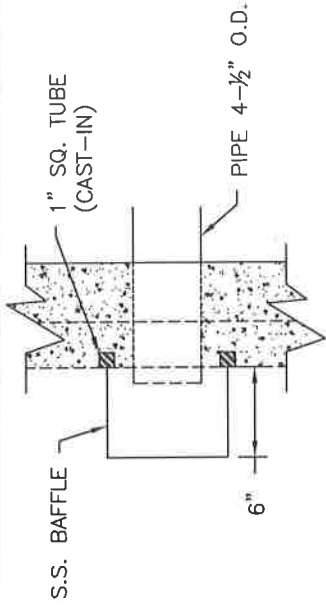
PLAN
SCALE: NTS

SEE PAGE 2 OF 2 FOR MANHOLE DIMENSIONS (TYP.)

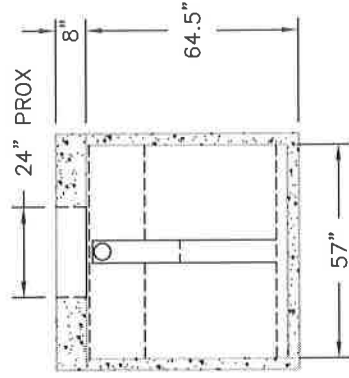


ELEVATION
SCALE: NTS

- * RAISED BAFFLE WALLS, 3" OFF BOTTOM, 1/2"-1" FROM TOP.
- ** LOWER BAFFLE WALLS SHALL BE STRUCTURAL CONCRETE ONLY. TERMINATE 6" BELOW LIQUID LEVEL.



BAFFLE DETAIL
SCALE: NTS



CROSS SECTION
SCALE: NTS

DATE: 9-9-08
SHEET NO. 1
OF 2

1600 GALLON CONCRETE INTERCEPTOR GREASE OR SAND/OIL

REGULATORY SERVICES GROUP
THESE DOCUMENTS CONTAIN PRIVILEGED AND CONFIDENTIAL INFORMATION WHICH SHALL NOT BE REDISTRIBUTED WITHOUT PRIOR WSSC APPROVAL

GREASE OR SAND/OIL INTERCEPTOR

- TANKS AND MANHOLES IN TRAFFIC-BEARING LOCATIONS SHALL MEET OR EXCEED H20 (SHA) LOADING DESIGN.
- 6" INCHES OF BEDDING AND THE BACKFILL ALL SIDES (UP TO TOP OF TANK), SHALL BE MD#6 OR SMALLER AGGREGATE.
- BAFFLES SHALL BE 16 GAUGE (.059 INCH) OR HEAVIER, TYPE 302 OR 304 STAINLESS STEEL.
- BAFFLE TRACKS SHALL BE 3/4" OR 1" STAINLESS STEEL OR ALUMINUM, TRACK ANCHORS SHALL BE WELDED TO BACK OF TRACK ANCHOR IN THE WALL CASING.
- MANHOLE COVERS SHALL HAVE THE WORD "INTERCEPTOR" CAST IN

MODIFICATIONS FOR UNTRAPPED GARAGE DRAINS

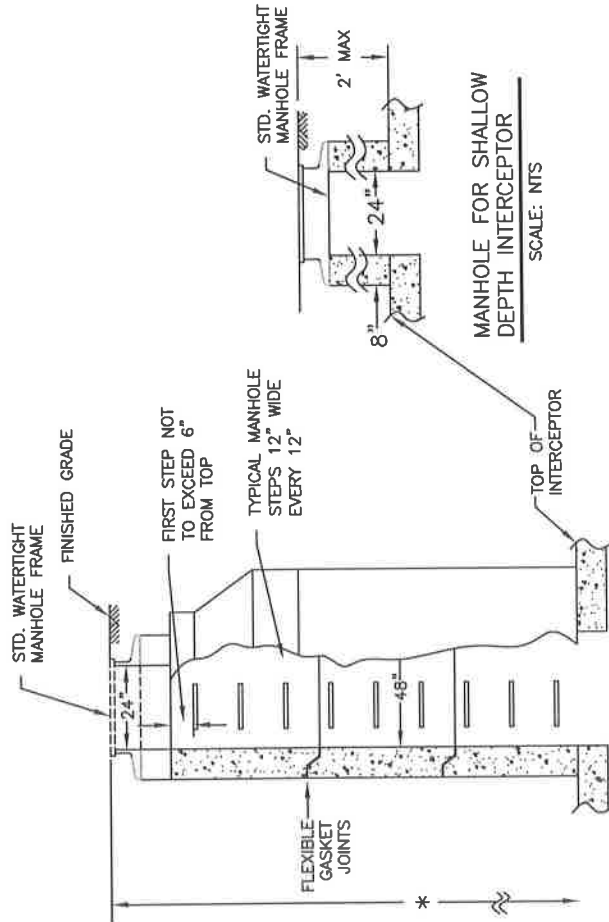
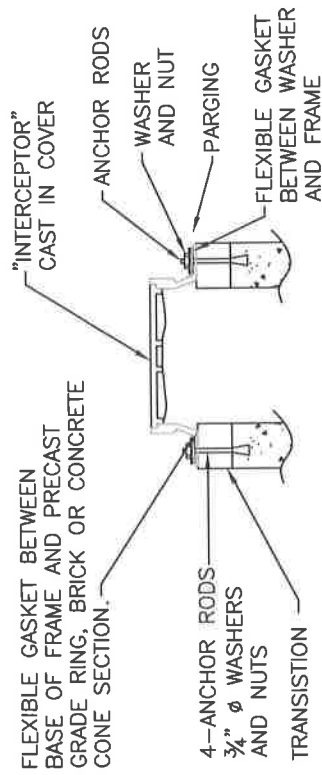
- MANUFACTURER SHALL NOT INSTALL AN INLET BAFFLE.
- PLUMBER SHALL INSTALL INLET PIPE AS SHOWN ON DETAIL.
- THE TANK MUST BE VENTED AS SHOWN ON DETAIL.

DATE: 9-9-08
SHEET NO. 2
OF 2

REGULATORY SERVICES GROUP
THESE DOCUMENTS CONTAIN PRIVILEGED AND
CONFIDENTIAL INFORMATION WHICH SHALL NOT BE
REDISTRIBUTED WITHOUT PRIOR WSSC APPROVAL



WASHINGTON SUBURBAN SANITARY COMMISSION



* TOTAL DEPTH FROM BOTTOM OF INTERCEPTOR TO PUMP TRUCK STAGGING ELEVATION NOT TO EXCEED 20 FEET.

MANHOLE FOR DEPTHS OVER 2 FEET.
SCALE: NTS

**CONCRETE INTERCEPTOR
DETAILS AND SPECIFICATIONS**

REGULATORY SERVICES GROUP
THESE DOCUMENTS CONTAIN PRIVILEGED AND
CONFIDENTIAL INFORMATION WHICH SHALL NOT BE
REDISTRIBUTED WITHOUT PRIOR WSSC APPROVAL