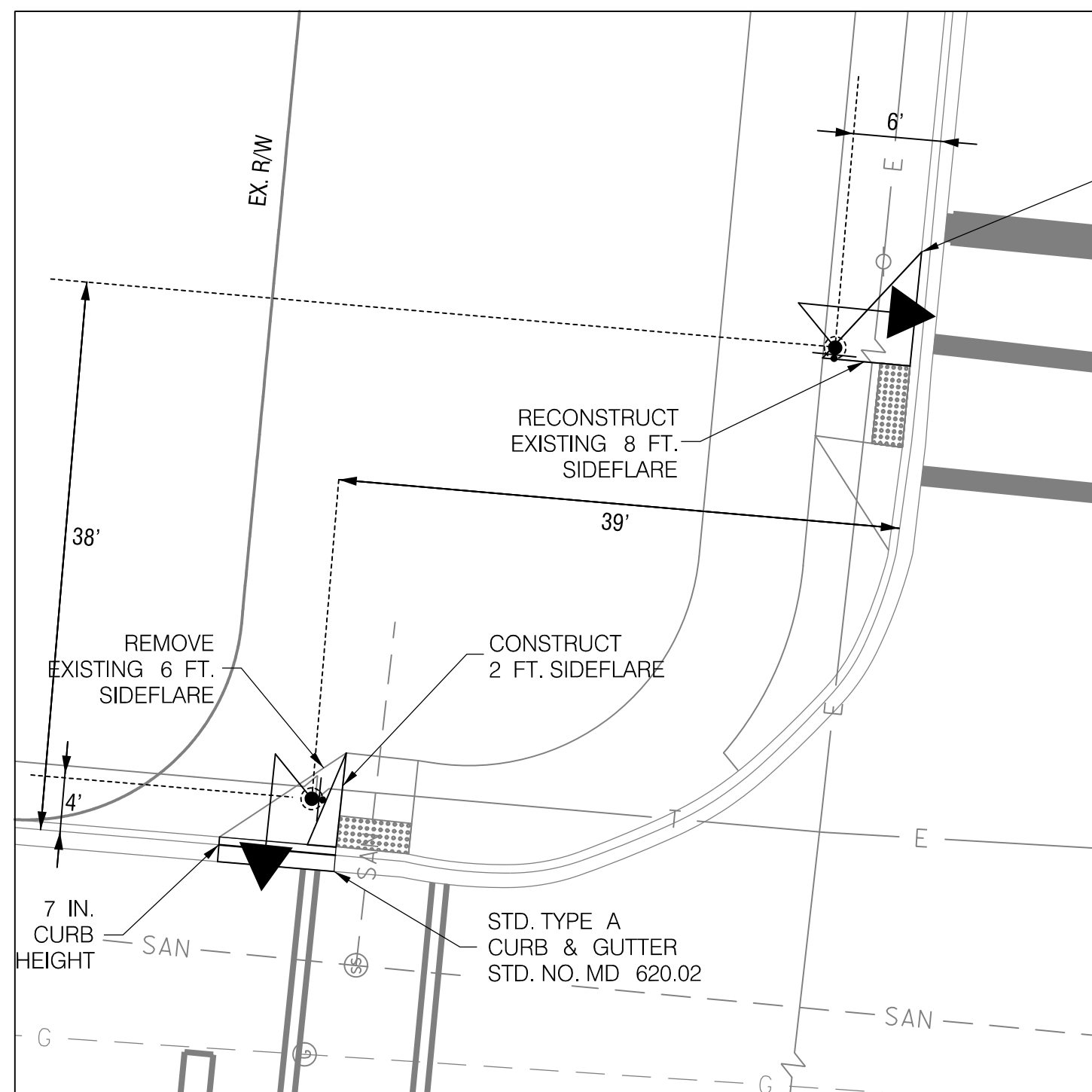
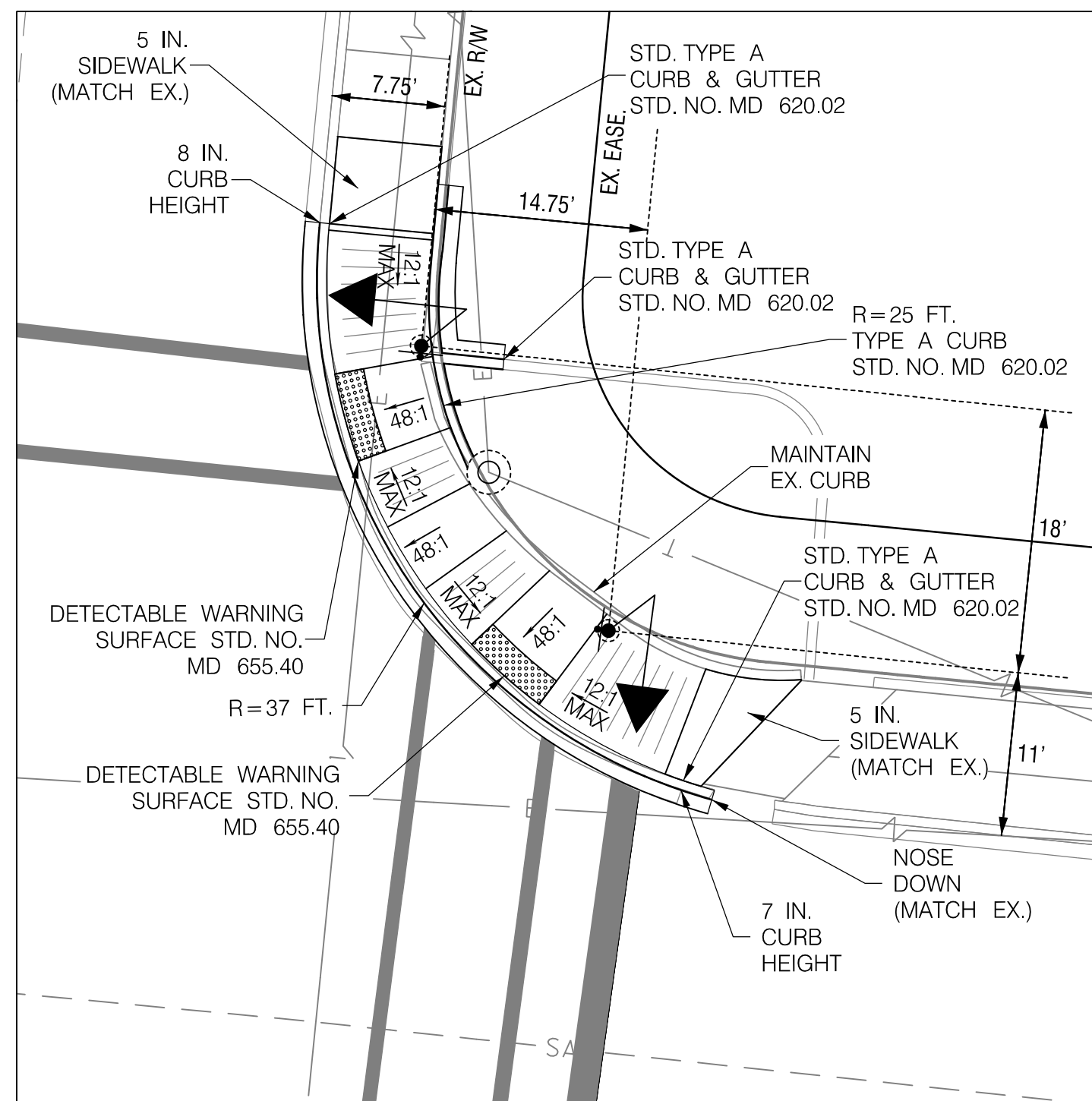


MD 650 IS ASSUMED TO RUN IN A NORTH-SOUTH DIRECTION

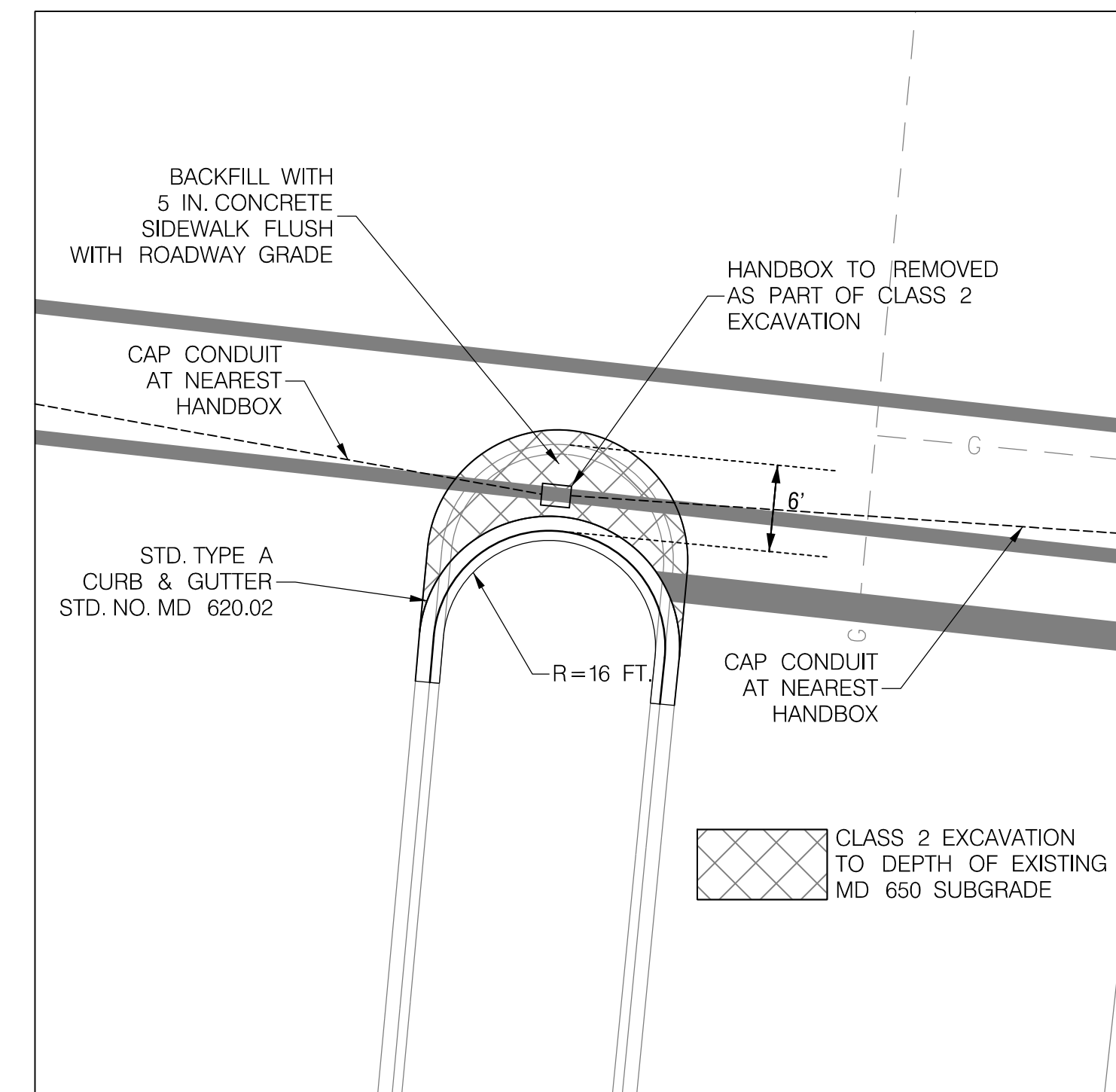
ADA SIDEWALK RAMP AND TRAFFIC SIGNAL DETAIL
NW CORNER - 1"=10'



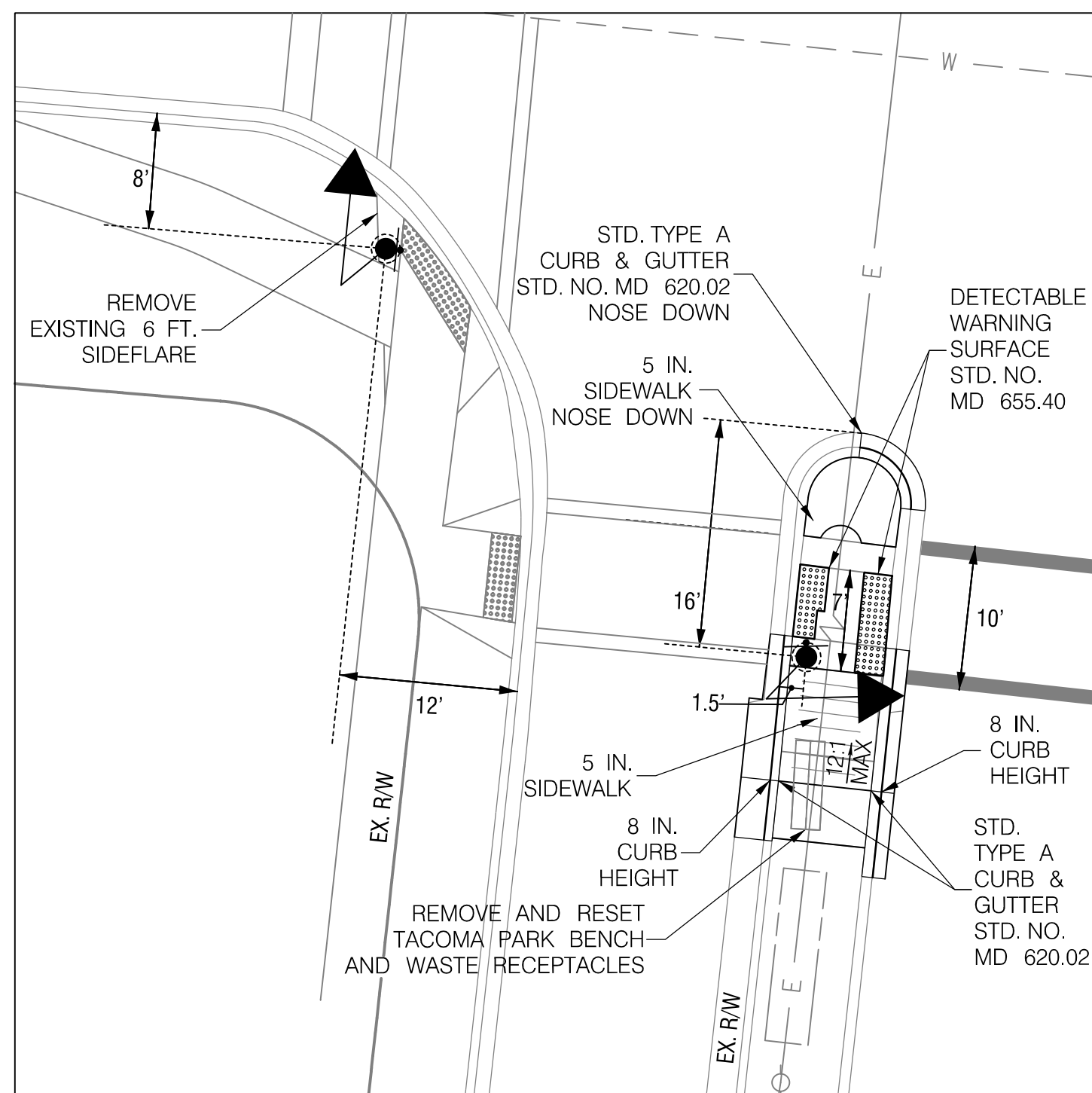
ADA SIDEWALK RAMP AND TRAFFIC SIGNAL DETAIL
NE CORNER - 1"=10'



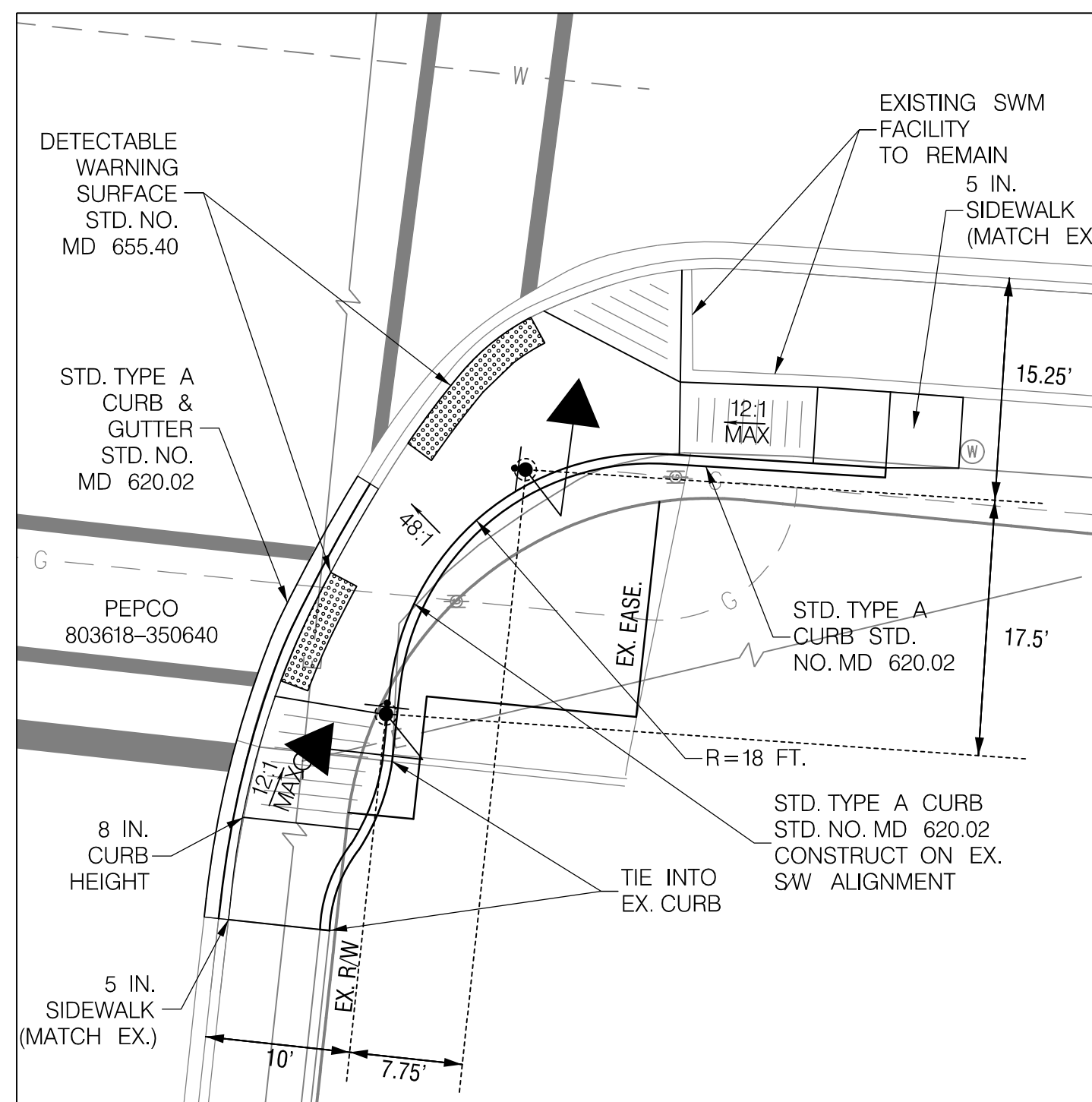
MD 650 SOUTH LEG
MEDIAN IMPROVEMENTS
1"=10'



ADA SIDEWALK RAMP AND TRAFFIC SIGNAL DETAIL
SW CORNER - 1"=10'



ADA SIDEWALK RAMP AND TRAFFIC SIGNAL DETAIL
SE CORNER - 1"=10'



NOTE:
THESE PLANS ARE APPROVED FOR CONSTRUCTION FOR A PERIOD OF ONE (1) YEAR. SHOULD CONSTRUCTION NOT BEGIN WITHIN THIS TIME FRAME, THESE PLANS SHALL BE NULL AND VOID WITH A RE-REVIEW REQUIRED FROM THE TRAFFIC ENGINEERING DESIGN DIVISION.
AMD PERMIT NO. 15APM0039XX



STATE OF MARYLAND
DEPARTMENT OF TRANSPORTATION
STATE HIGHWAY ADMINISTRATION
OFFICE OF TRAFFIC & SAFETY
TRAFFIC ENGINEERING DESIGN DIVISION
MD 650 (NEW HAMPSHIRE AVENUE) AT
HOLTON LANE
(LANGLEY PARK, MARYLAND)

GENERAL INFORMATION-02

SCALE	NTS	DATE	MARCH 2016	CONTRACT NO.	BW966M82
DESIGNED BY	LTCBAB	COUNTY	MONTGOMERY		
DRAWN BY	LTCBAB	LOGMILE	15065000.83		
CHECKED BY	LTCBAB	TIMS NO.	N423		
F.A.P. NO.		TOD NO.			

PROFESSIONAL CERTIFICATION: I HEREBY CERTIFY THAT THESE DOCUMENTS WERE PREPARED OR APPROVED BY ME AND THAT I AM A FULLY LICENSED PROFESSIONAL ENGINEER UNDER THE LAWS OF THE STATE OF MARYLAND. LICENSE NO. 20094. EXPIRATION DATE: 09/30/21

PLOTTED: Friday, March 11, 2016 AT 12:15 PM

LENHART TRAFFIC CONSULTING, INC.
645 BALTIMORE ANNAPOLIS BOULEVARD, SUITE 214
SEVERNA PARK, MD 21146
TEL: (410) 216-3333
FAX: (443) 782-2288
www.lenharttraffic.com