



Popeyes Louisiana Kitchen
400 Perimeter Center Terrace, Suite 1000
Atlanta, GA 30346

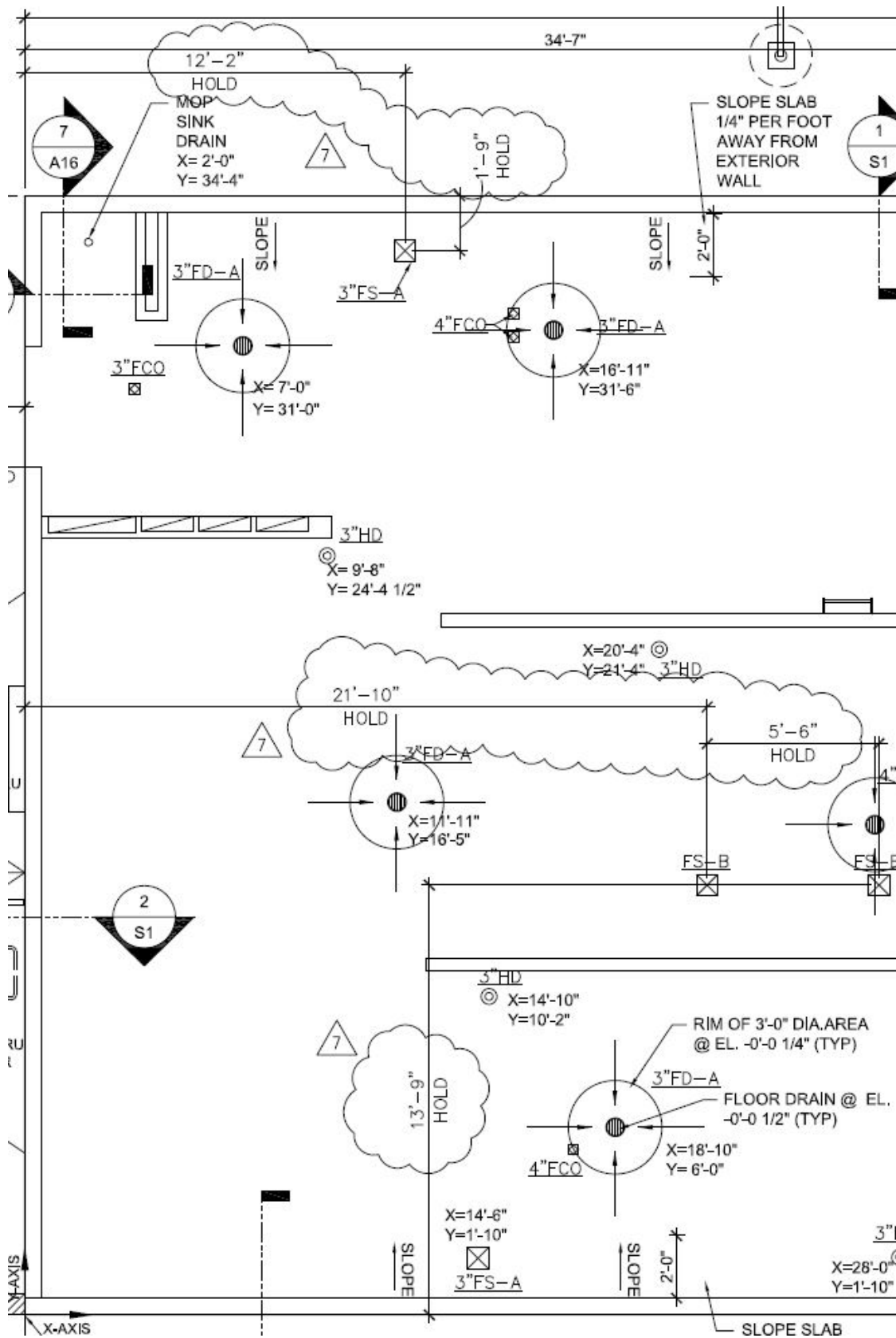
Design & Construction Field Bulletin

Date	June 6, 2016 (Issuance #002)
Field Bulletin No.	FB-007 2016 (3 pages)
Category	Structural / Plumbing
Subject	Floor Sink Locations
Prototype Set Referenced	PLK 15 Series Drawings
Prototype Drawings Referenced	Sheet S1 – Foundation Plan
D&C Contact	design@popeyes.com

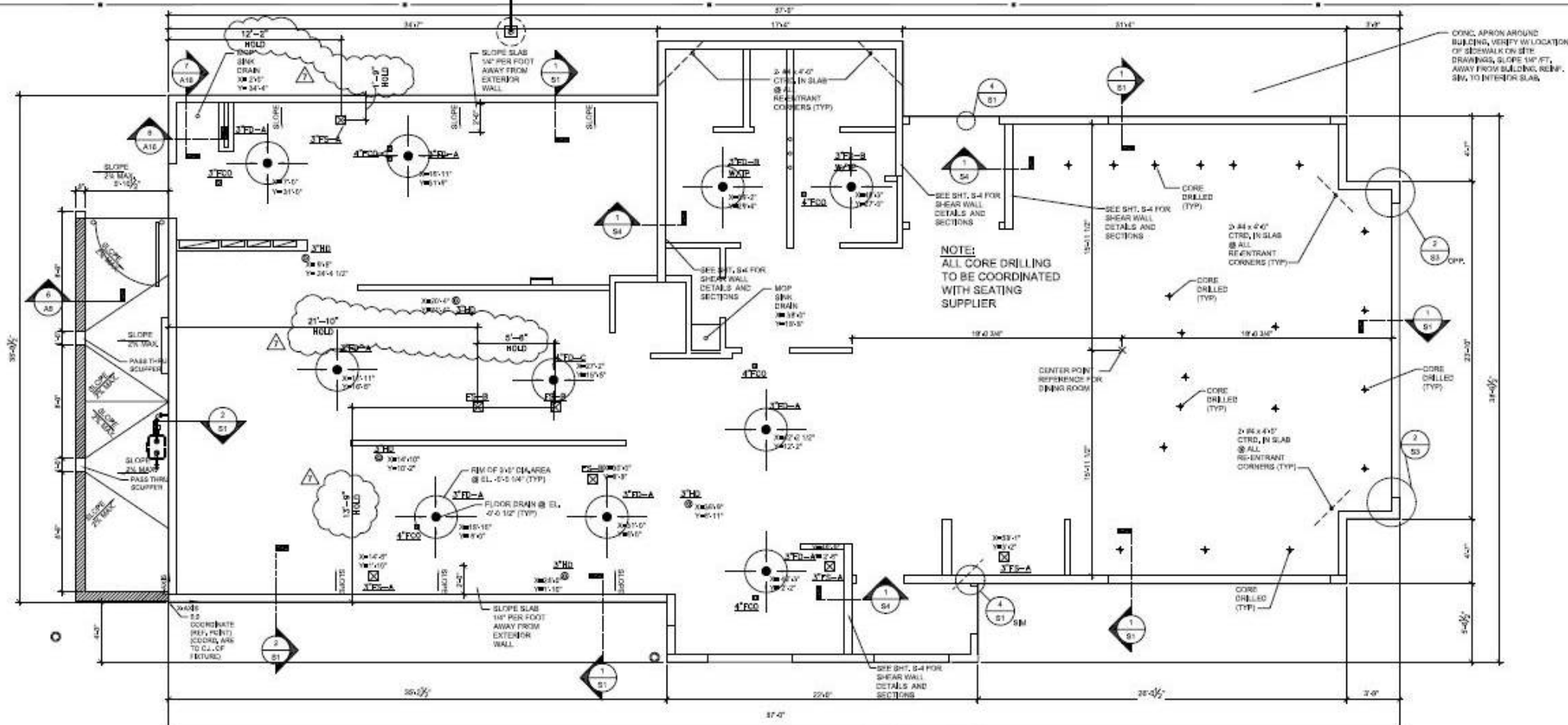
Comments

In some cases, the locations of the floor sinks and the legs of equipment are in conflict when installed. The dimensions showing the locations of the floor sinks have been revised to avoid conflict.

Floor Sink dimensions



8 FOUNDATION PLAN
S1 1/4"=1'-0"



POPEYES
 1400 PETER QUINN DRIVE
 NEW ORLEANS, LA 70115
 PHONE: 504.585.1400
 FAX: 504.585.1401
 WWW.POPEYES.COM
 THESE DOCUMENTS ARE THE PROPERTY OF POPEYES. NO PARTS MAY BE REPRODUCED OR TRANSMITTED IN ANY FORM OR BY ANY MEANS, ELECTRONIC OR MECHANICAL, INCLUDING PHOTOCOPYING, RECORDING, OR BY ANY INFORMATION STORAGE AND RETRIEVAL SYSTEM, WITHOUT THE WRITTEN PERMISSION OF POPEYES. THE USER ASSUMES ALL LIABILITY FOR THE USE OF THESE DOCUMENTS.

THESE DOCUMENTS ARE NOT FOR PERMIT IN CONSTRUCTION. THEY MUST BE COMPLETED AND APPROVED BY A LICENSED ARCHITECT AND ENGINEER TO CONFORM TO ALL APPLICABLE REGULATIONS AND CODES. THERE IS NO WARRANTY, EXPRESSED OR IMPLIED, IN THESE DOCUMENTS. THE USER ASSUMES ALL LIABILITY FOR THE USE OF THESE DOCUMENTS. THE USER ASSUMES ALL LIABILITY FOR THE USE OF THESE DOCUMENTS. THE USER ASSUMES ALL LIABILITY FOR THE USE OF THESE DOCUMENTS.

POPEYES
PLK1562 HP PROTOTYPE
E.L.F.S. / SIMULATED STONE
 LOUISIANA KITCHEN PLK DESIGN STANDARDS
 62 SEATS / DUAL-LINE HIGH PRODUCTION



POPEYES

REFERENCES:
 4 42118 FLOOR SHEK DR.

DATE: 11/13/18

S1

FOUNDATION PLAN
 CHECKED: HR

GENERAL NOTES:

- TYPICAL SLAB CONSTRUCTION TO BE 4" 3000 PSI CONCRETE WITH #4 WAF FLATS OVER 6 MIL VAPOR BARRIER, AND COMPACTED THERM-TREATED FILL AS REQUIRED.
- FOUNDATION IS DESIGNED FOR ALLOWABLE SOIL PRESSURE OF 2000 P.S.F., R_C TO VERIFY SOIL BEARING CAPACITY IS IN ACCORDANCE WITH FOUNDATION DESIGN. STRUCTURAL ENGINEER OF RECORD SHALL REVISIT FOOTING SIZES IF A LOWER BEARING CAPACITY IS RECOMMENDED BY THE GEOTECHNICAL REPORT.
- PLUMBING ITEMS ARE SHOWN FOR GENERAL INFORMATION ONLY. CONTRACTOR TO COORDINATE EXACT LOCATION OF ITEMS WITH PLUMBING SHEETS AND EQUIPMENT LAYOUT DIAGRAMS. VERIFY WITH EQUIP. SUPPLIER.
- COORDINATE EXACT LOCATION & TYPE OF ALL REQUIRED DRAINS W/ PLUMBING PLANS.
- FINISH FLOOR TO BE SLOPED TO FLOOR DRAINS AT KITCHEN/STROOM AREA, R_C TO VERIFY EXACT TOP ELEVATION OF ALL PLUMBING FIXTURES PRIOR TO CONSTRUCTION.
- IF IS THE CONTRACTOR'S OPTION TO USE EITHER THE MONOLITHIC SLAB METHOD OR THE WALL FOOTING METHOD.
- PROVIDE SAWN CONTROL JOINTS 1/4 OF SLAB THICKNESS @ 17'-0" O.C. MAX. EACH DIRECTION.
- GO TO CONFIRM WITH BUILDING OFFICIAL THAT OAH POWER (IF BEING USED) DOES NOT ENDOGRACH THE BASEMENT OF THE POWER LINE AT REAR OF BUILDING.

- LEGEND:**
- FD - FLOOR DRAIN
 - FS - FLOOR SINK
 - CD - CLEANOUT
 - HD - HUB DRAIN

NOTES:

- SEE SEATING VENDOR PLAN, FOR CORE DRILLED LOCATION FOR THE LOW WALL AND TABLE BASE POSTS.
- SEE SHEET S4 FOR SHEAR WALL REINFORCEMENT AT EXTERIOR BUILDING WALLS.
- EXTERIOR DIMENSIONS ARE FROM EDGE OF FOUNDATION, REFER TO ARCHITECTURAL DRAWINGS.

SOILS:
 FOUNDATION DESIGN REQUIRES MINIMUM 2500 P.S.F. SOIL BEARING CAPACITY

