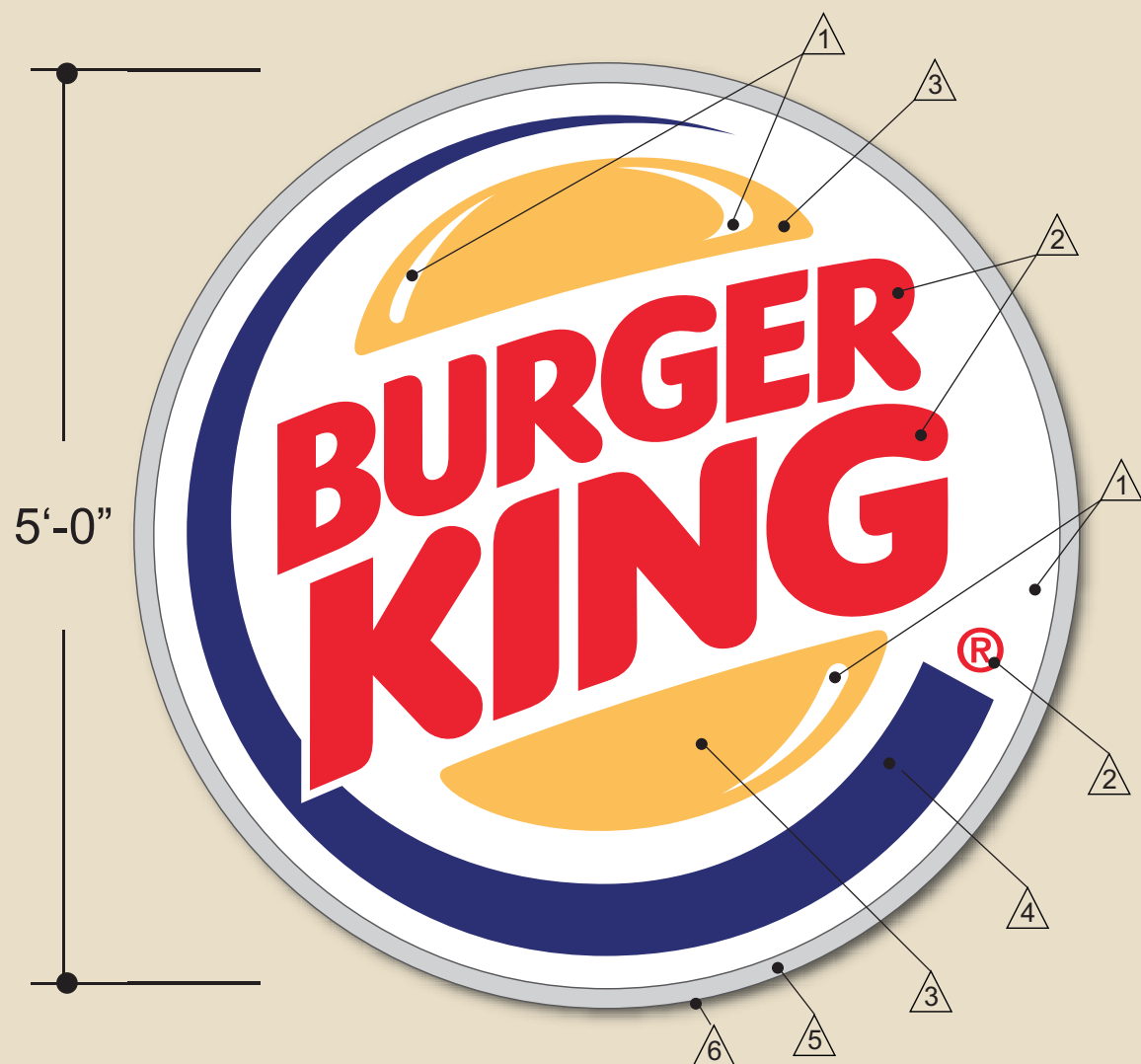




# SINGLE FACE WALL SIGN



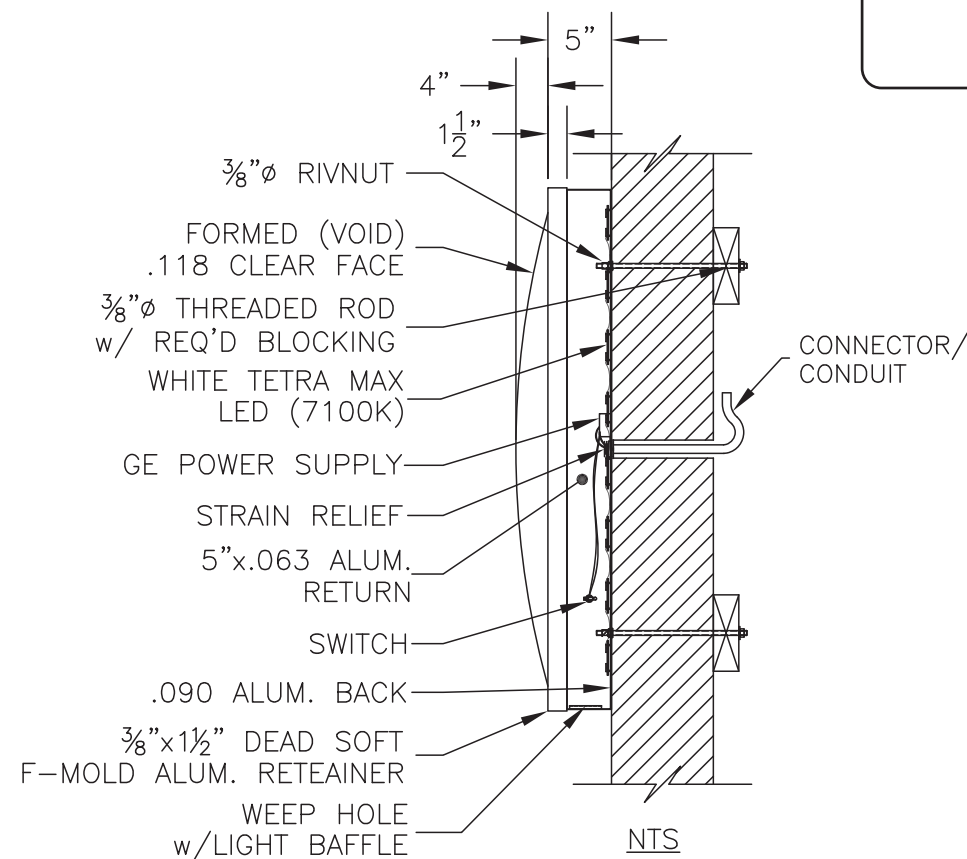
- ① 3M White Diffuser #3635-30 - Second Surface
- ② 3M Translucent Vinyl #3630-33 Red (PMS 485C) - Second Surface
- ③ 3M Translucent Vinyl #3630-125 Yellow (PMS 1235C) - Second Surface
- ④ 3M Translucent Vinyl #3630-8703 Blue (PMS274C) - Second Surface
- ⑤ Return Color - Natural Matte Aluminum Finish
- ⑥ Retainer - Paint to Match Matte Aluminum Finish

## SPECIFICATIONS

- Clear polycarbonate faces with translucent vinyl applied second surface and dish formed.
- Fabricated aluminum cabinet painted.
- Aluminum extrusion retainer painted.
- Internally illuminated with LED's.
- Exterior wall mount.

## ELECTRICAL

Total Amps: .85  
 Total Circuits: (1) 20 amp  
 Volts: 120  
 25 SQ. FT.



**PART # 116-WS-5-LED-GE**



THIS IS AN ORIGINAL UNPUBLISHED DRAWING CREATED FOR YOUR PERSONAL USE IN CONNECTION WITH A PROJECT PLANNED FOR YOU BY CUMMINGS SIGNS. IT IS NOT TO BE SHOWN OUTSIDE YOUR ORGANIZATION NOR USED, REPRODUCED, COPIED, OR EXHIBITED IN ANY FASHION UNLESS AUTHORIZED IN WRITING BY AN OFFICER OF CUMMINGS SIGNS.

CUSTOMER APPROVAL:

DATE: \_\_\_\_\_

Rev. #	DATE	BY	Rev. #	DATE	BY
Rev. #1	_____	_____	Rev. #4	_____	_____
Rev. #2	_____	_____	Rev. #5	_____	_____
Rev. #3	_____	_____	Rev. #6	_____	_____



DRAWING NO:

**67978D1**

DATE: 2-27-2012

S. Hawke

THIS DESIGN REMAINS OUR EXCLUSIVE PROPERTY AND CANNOT BE DUPLICATED WITHOUT WRITTEN CONSENT