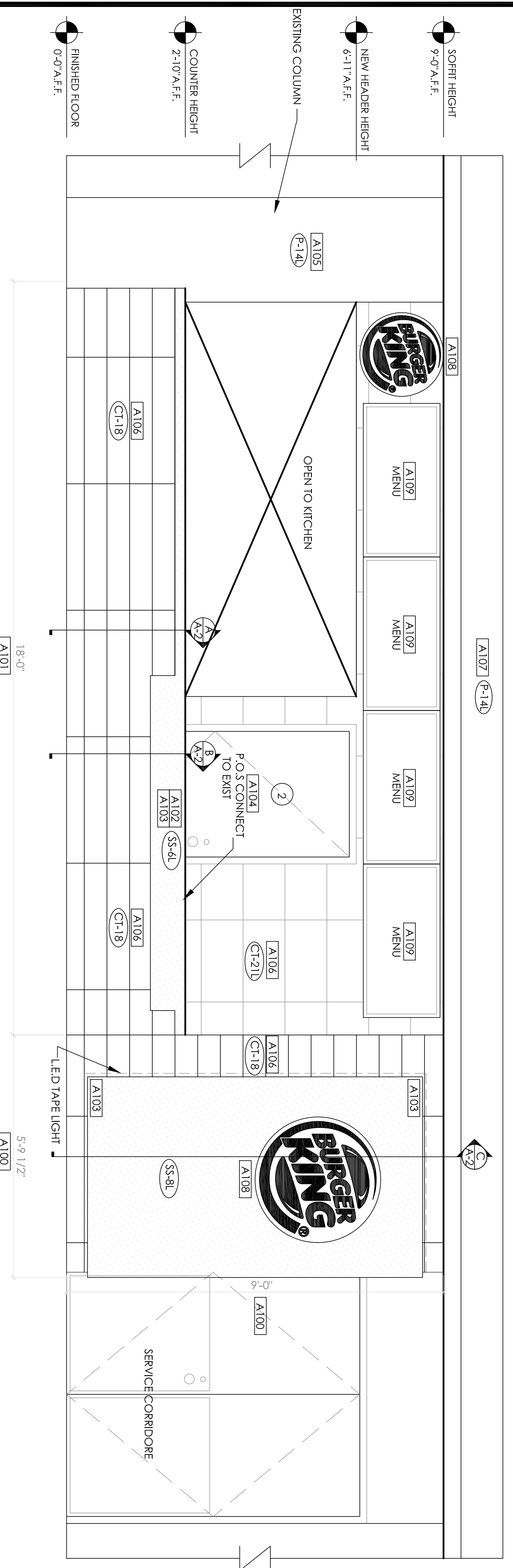
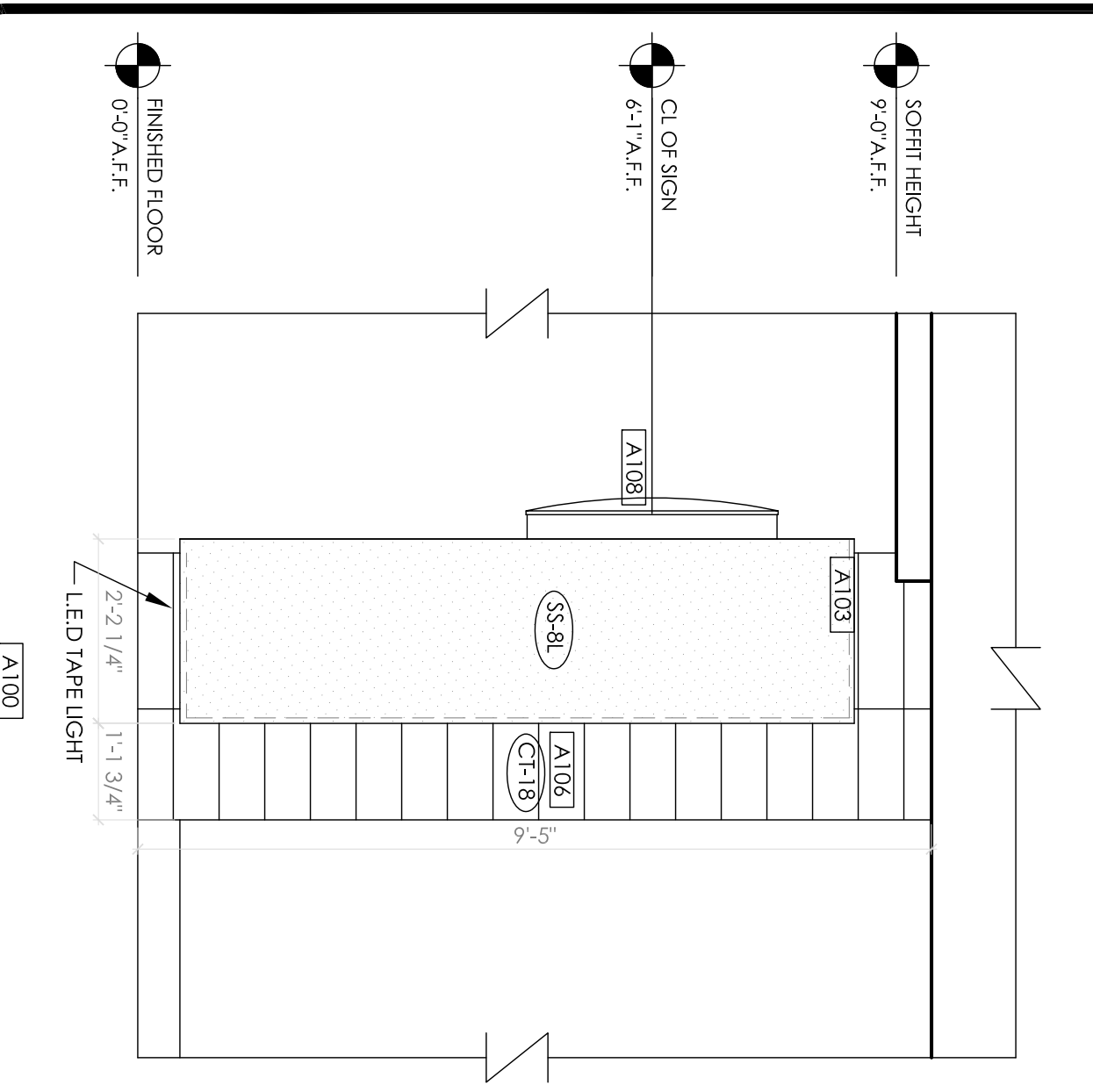


**1 DEMO ELEVATION**  
SCALE: 1/2" = 1'-0"



**2 PROPOSED ELEVATION**  
SCALE: 1/2" = 1'-0"

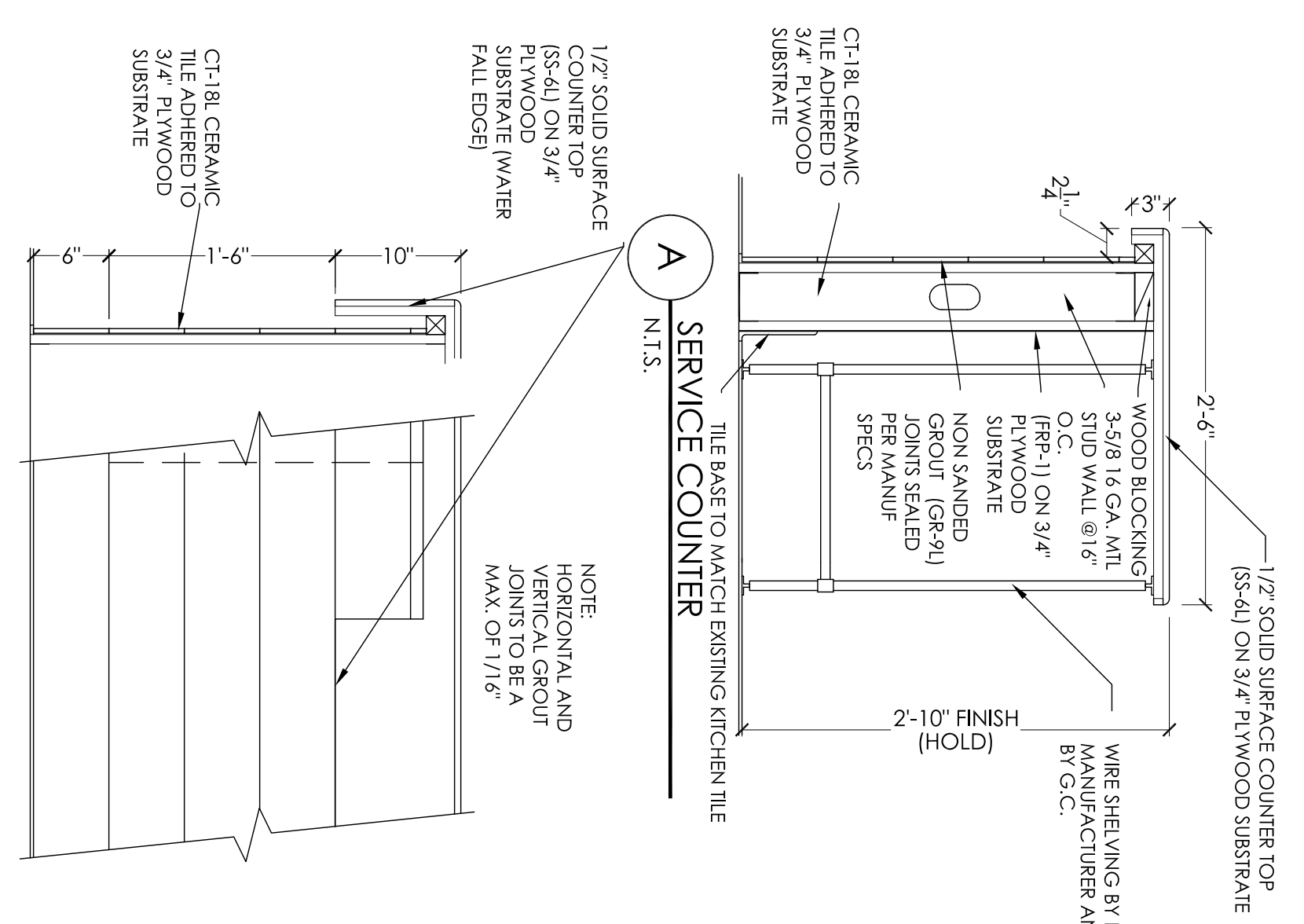


**C TOWER SECTION**  
SCALE: 1" = 1'-0"

TAG	ELEVATION TAG	SECTION TAG	SCORE TAG	WALL TAG	DOOR TAG	FINISH TAG
SEE SHEET A-2	▲	▲	▲	▲	▲	▲
SEE SHEET A-1	▲	▲	▲	▲	▲	▲

**LEGEND**

EXISTING WALL TO REMAIN  
EXISTING ITEM, CONSTRUCTION SYSTEM TO BE REMOVED  
NEW WALL



**DEMO SCOPE OF WORK**

- [D100] DEMO COUNTER KNEE WALL.
- [D101] DEMO COUNTER TOP.
- [D102] REMOVE EXISTING LOGO SIGN AND RETAIN.
- [D103] REMOVE MENU BOARD AND RETAIN.
- [D104] REMOVE DOOR AND RETAIN. TO BE REFINISHED.
- [D105] DEMO SECTION OF HEADER AS SHOWN.

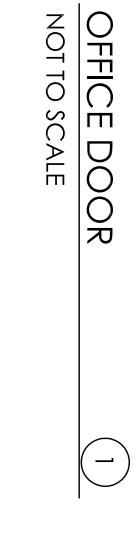
**PROPOSED SCOPE OF WORK**

- [A100] INSTALL NEW FULL HEIGHT WALL AS PER LAYOUT.
- [A101] INSTALL COUNTER KNEE WALL AND TILE AS PER LAYOUT AND SPECIFICATION (WALL COUNTER H: 34").
- [A102] INSTALL NEW COUNTER TOP WITH WATERFALL EDGE.
- [A103] INSTALL NEW LED TAPE LIGHT AROUND TOWER REVEAL CONNECT TO EXISTING ELECTRICAL.
- [A104] REFINISH KITCHEN DOOR TO MATCH 2020. PAINT FRAME P-9L.
- [A105] PREP WALLS AND PAINT PER SPECIFICATION (P-14).
- [A106] INSTALL WALL TILE PER LAYOUT AND SPECIFICATION.
- [A107] PAINT CEILING AND SOFFITS IN SERVICE AREA P-14L.
- [A108] RELOCATE EXISTING LOGO SIGN. E.C. TO PROVIDE JUNCTION BOX.
- [A109] RELOCATE MENU BOARDS AS PER REFLECTED CEILING PLAN. E.C. TO USE EXISTING ELECTRICAL CONNECTIONS.

\* ALL FINISH SPECIFICATIONS TO BE 2020 IMAGE.

**DOOR SCHEDULE**

DOOR	DOOR
<b>DOOR</b> OPENING: 3'-0" x 6'-8" MATERIAL: SOLID CORE HPL/GLASS FINISH: REFLECTED ID SHEETS <b>HARDWARE</b> EACH DOOR TO RECEIVE: HINGES: 3 EACH HANGER, 881279 4 1/2 x 4 1/2 LOCKSET: 1 EACH SCHLAGE, A158PD SMT X 626 FLOOR STOP: 1 EACH HANGER 241F X US260 (PASSAGE) KICK PLATES: 2 EACH HANGER 1935 10x27 LDM 628 (INSTALL WITH/IN HEAD PHILLIPS HEAD SCREWS) SILENCERS: 3 EACH HANGER 307D RBR	<b>DOOR</b> OPENING: 3'-0" x 6'-8" MATERIAL: SOLID CORE HPL/GLASS FINISH: REFLECTED ID SHEETS <b>HARDWARE</b> EACH DOOR TO RECEIVE: HINGES: 3 EACH HANGER, 881279 4 1/2 x 4 1/2 x 652 LOCKSET: 1 EACH SCHLAGE, A158PD SMT X 626 FLOOR STOP: 1 EACH HANGER 241F X US260 (PASSAGE) KICK PLATES: 2 EACH HANGER 1935 10x27 LDM 628 (INSTALL WITH/IN HEAD PHILLIPS HEAD SCREWS) SILENCERS: 3 EACH HANGER 307D RBR



**MATERIALS & FINISH SCHEDULE**

TAG	MATERIAL	LOCATION	MANUFACTURER	PRODUCT	COLOR	DIMENSION
P-9L	PAINT	DOOR FRAME/GYP SURFACES	PPG	PRIMER 4-212 PAINT 5-110M	WRIGHT STONE 1097 30/150	
SS-8L	SOLID SURFACE	COUNTER TOP	SAMSUNG/SARON	SOLID SURFACE	ASPERI LILY AL446	1/2" THICKNESS
CT-21L	CERAMIC TILE	SERVICE AREA WALL	GRANITIT HANDRE	FORMALIT ROVERE ANITCO	ROSSO MONZO	1/2" THICKNESS
CT-18	CERAMIC TILE	COUNTER KNEE WALL & TOWER	GRANITIT HANDRE	FORMALIT ROVERE ANITCO	WILD SILK	12"x24"
FRP-1	FIBERGLASS REINFORCED PANELS	SERVICE AREA	MARLITE	STANDARD FRP	ROVERE ANITCO	6' X36"
GR-9L	GROUT	COUNTER KNEE WALL & TOWER	LATICRETE	POLY BLEND SANDED	#66 CHESTNUT BROWN	USE WITH CT-18L

PROJECT  
BURGER KING #  
200 RENAISSANCE CENTER #A-204,  
DETROIT, MI 48226

SHEET TITLE  
DEMO ELEVATION  
PROPOSED ELEVATION

JOB #  
TG-16398

SHEET  
A-2



TECHNICAL GROUP, INC.  
3771 6 Hills Tech Drive  
Farmington Hills, MI 48331  
(248) 426-8000  
FAX (248) 426-7004

No.	Date	By	Notes

Checked by: SS  
Scale: AS NOTED  
Date: 04.19.16

ALL RIGHTS RESERVED. NO PART OF THESE DRAWINGS OR SPECIFICATIONS MAY BE COPIED, REPRODUCED OR USED IN CONNECTION WITH ANY WORK OTHER THAN THE SPECIFIC PROJECT FOR WHICH THEY HAVE BEEN PREPARED. WITHOUT PRIOR WRITTEN AUTHORIZATION FROM THE ARCHITECT.