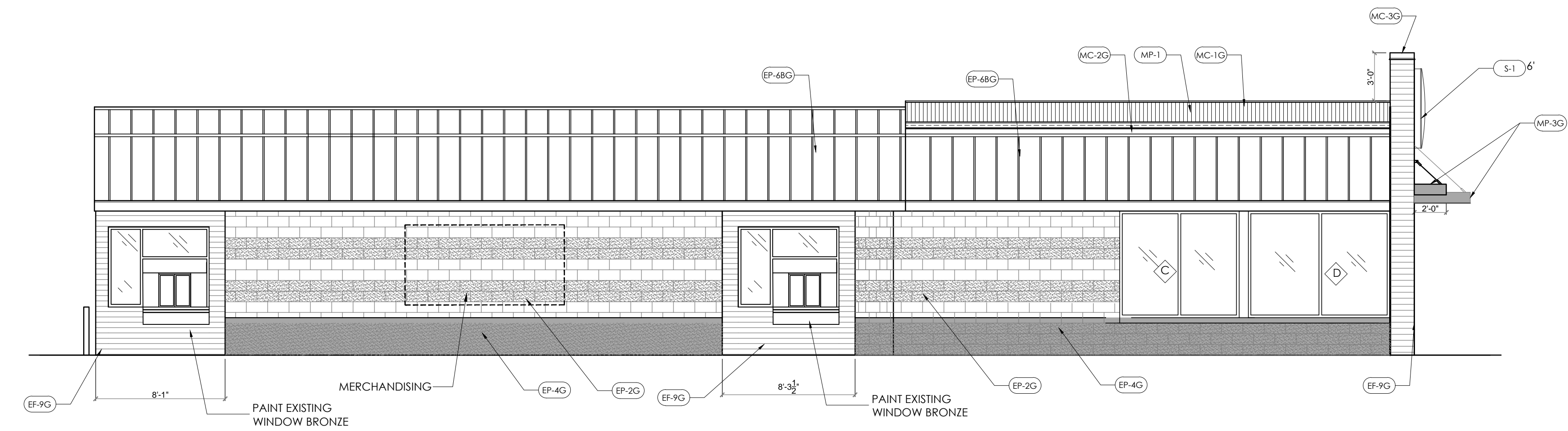
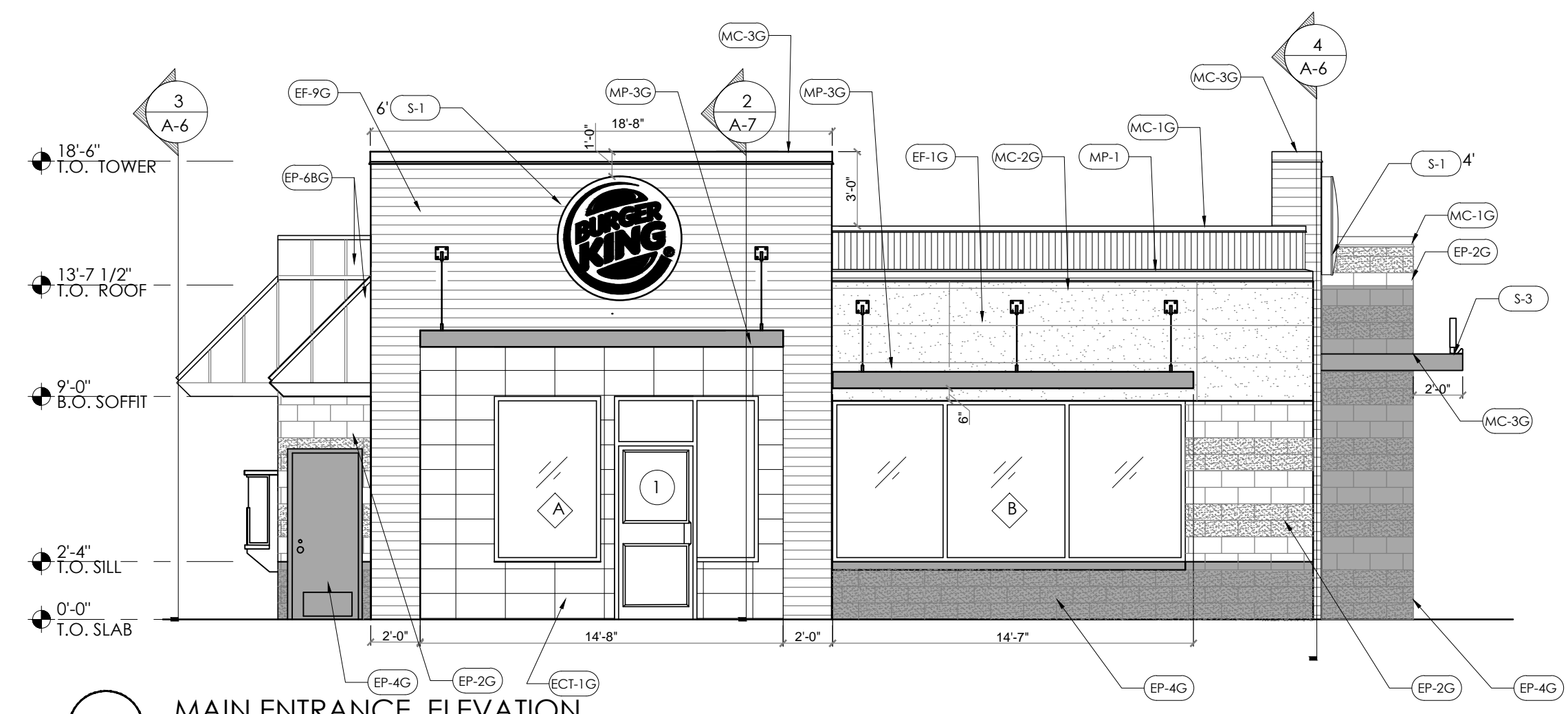


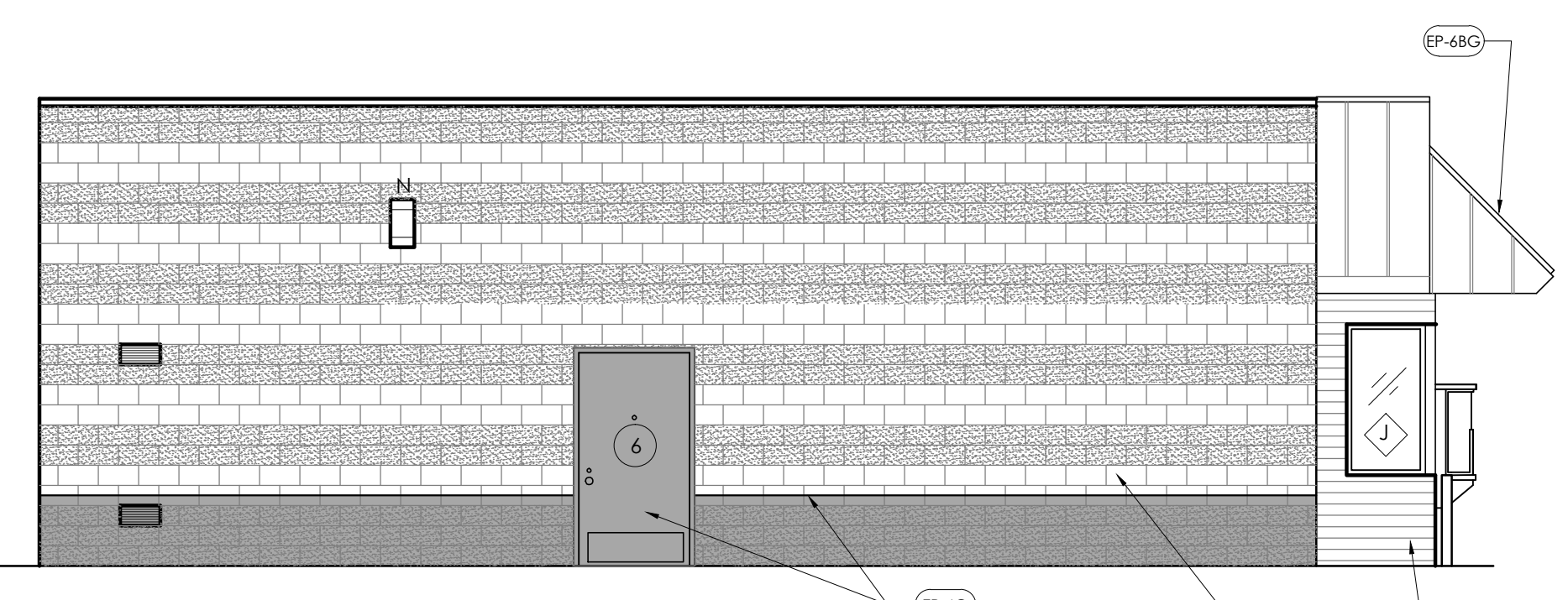
1 SIDE ENTRANCE ELEVATION
SCALE: 3/16" = 1'-0"



2 DRIVE THRU ELEVATION
SCALE: 3/16" = 1'-0"



3 MAIN ENTRANCE ELEVATION
SCALE: 3/16" = 1'-0"



4 REAR ELEVATION
SCALE: 3/16" = 1'-0"

GENERAL NOTES

MERCHANDISING AND GRAPHICS NOTE:
WALL FINISHES PER SCHEDULE ARE REQUIRED ON WALL BEHIND GRAPHICS AND MERCHANDISING.

FINISH NOTES:
ALL FINISHES AS PER 20/20 FINISH SCHEDULE.

FOR CLARIFICATION:
*LIGHT BAND IS A SCREENED UNIT. ONLY THE LIGHT WASH IS SEEN AS PART OF THE BANDING UNIT.

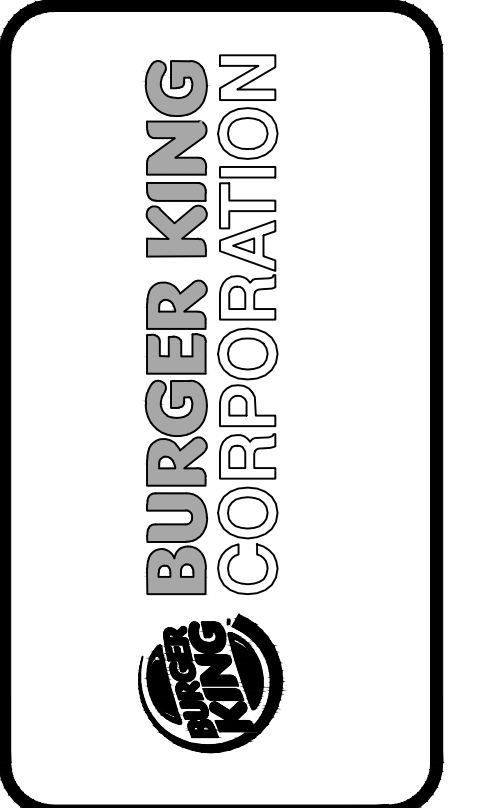
*ALL HARDIE BOARD & NICHHA PANEL THAT IS TO BE INSTALLED IS TO BE INSTALLED AS PER MANUFACTURERS SPECIFICATIONS.

FOR HARDIE PANEL/NICHHA BOARD INSTALLATION DETAILS AND INFORMATION REFER TO THE WEB SITES LISTED BELOW FOR MORE INFORMATION:
<http://www.jameshardiecommercial.com/>
<http://www.nichiha.com/resources/cad>

| SECTION TAG | SCOPE TAG | DOOR TAG | WINDOW TAG | MATERIAL TAG |
|-------------|-----------|-----------------|-----------------|---------------|
| | | | | |
| | | SEE SHEET A-1.1 | SEE SHEET A-1.1 | SEE SHEET A-2 |

| EXTERIOR MATERIALS & FINISH SCHEDULE | | | | | |
|--------------------------------------|---|---|---------------------------|---|---|
| TAG | MATERIAL | LOCATION | MANUFACTURER | PRODUCT | COLOR |
| EB-1G | EXTERIOR BRICK | GENERAL | PINE HALL BRICK | FACE BRICK | OLD IRVINGTON O/S |
| EF-1G | FIBER CEMENT SIDING PANELS | | NICHHA CEMENT PANELS | NICHHA ARCHITECTURAL BLOCK - LARGE - 18" X 6" | COLOR TO MATCH EP-2G 'TAUPE TONE' - STACKED BOND. (PANELS CAN COME PRE-PAINTED) |
| EF-4G | EXTERIOR STUCCO FINISH | GENERAL | STO OR APPROVED EQUAL | STO POWERWALL STUCCO SYSTEM TEXTURE: FINE SAND | COLOR TO MATCH EP-4G 'MONTERREY CLIFFS' COLOR TO MATCH EP-7G 'FLAMING RED' |
| EF-9G | EXTERIOR FINISH FIBER CEMENT SIDING | EXTERIOR SIGN ARCHONS | NICHHA | NICHHA BOARD : VINTAGE WOOD EF762 | CEDAR |
| TR-1G | ALUMINUM TRIMS | | | | |
| EP-2G | EXTERIOR PAINT | EXTERIOR GENERAL | | PRIMER: 17-921 PAINT: 6-2045XI | TAUPE TONE CUSTOM FORMULA |
| EP-4G | EXTERIOR PAINT | EXTERIOR WAINSCOT | | PRIMER: 17-921 PAINT: 6-2045XI | MONTERREY CLIFFS10Y 14/080 |
| EP-6G | EXTERIOR PAINT | EXTERIOR ACCENT FOR METAL SUBSTRATES ONLY | PPG | PRIMER: 6-212 PAINT: 6-230 | BURGER KING SILVER CUSTOM FORMULA |
| EP-68G | EXTERIOR PAINT | EXISTING STANDING SEAMMETAL ROOF | | PRIMER: 90-712 PAINT: 90-1110 | MARCH WIND CUSTOM FORMULA |
| EP-8G | EXTERIOR PAINT | METAL COPING AT ARCHON TOWERS | | PRIMER: 17-921 PAINT: 6-2045XI | CEDAR CUSTOM FORMULA |
| EXT-G | EXTERIOR PAINT | POLES & SIGNS | | PRIMER: 90-712 PAINT: 90-353 | BLACK |
| ECT-1G | EXTERIOR CERAMIC TILE | EXTERIOR ACCENT | GRANITE FIANDRE/ EUROWEST | SENSIBLE STONE ED5052 (USE EGR-4G) | RED NATURAL STACKED BOND PATTERN 12" X24" |
| MC-1G | METAL COPING | TOP OF LIGHT BAND WALL CAP | | PERMA SNAP PLUS | A-30 SILVERSMITH |
| MC-2G | METAL COPING | BELOW LIGHT BAND | W.P. HICKMAN SYSTEMS | PERMA SNAP PLUS | FACTORY FINISH TO MATCH EP-2G (TAUPE TONE) |
| MC-3G | METAL COPING | TOP OF ARCHON | | PERMA SNAP PLUS | COPING TO BE PAINTED EP-8G (CEDAR) |
| MP-1 | CORRUGATED METAL L.E.D. LIGHT BAND | PARAPET BAND | LEKTRON | LED LIGHT BAND | |
| MP-3G | METAL CANOPY | ABOVE DOORS/WINDOWS | W.P. HICKMAN SYSTEMS | CUSTOM METAL CANOPY | FACTORY FINISH TO MATCH EP-1 CLEAR ANODIZED |
| MP-4 | METAL AWNING/ABOVE WINDOWS/MANSARD ROOF | MANSARD ROOFING/ABOVE WINDOWS | FIRESTONE METAL PRODUCTS | STANDING SEAM METAL ROOF UC-4 PROFILE | SILVER METALLIC SR |
| S-1 | LOGO SIGN: 4' OR 3' Ø | AT TOWER | CUSTOM | | |
| S-3 | FLAME GRILLING | AT ENTRY TOWER | CUSTOM | | |

| | | | |
|-----------------|------|----|-------|
| No. | Date | By | Notes |
| | | | |
| Drawn By: TC | | | |
| Checked: SB | | | |
| Scale: AS NOTED | | | |
| Date: 04.01.16 | | | |



TECHNICAL CORP., INC.
37716 Hills Tech Drive
Farmington Hills, MI 48331
(248) 426-8000
(248) 426-7004



PROJECT
BURGER KING #13916
34897 GROSSBECK HWY.
CLINTON TWP., MI 48035

SHEET TITLE
PROPOSED EXTERIOR ELEVATIONS

DO NOT SCALE THIS PRINT. USE FIGURED DIMENSIONS ONLY.

JOB #
TG-16350

SHEET
A-2