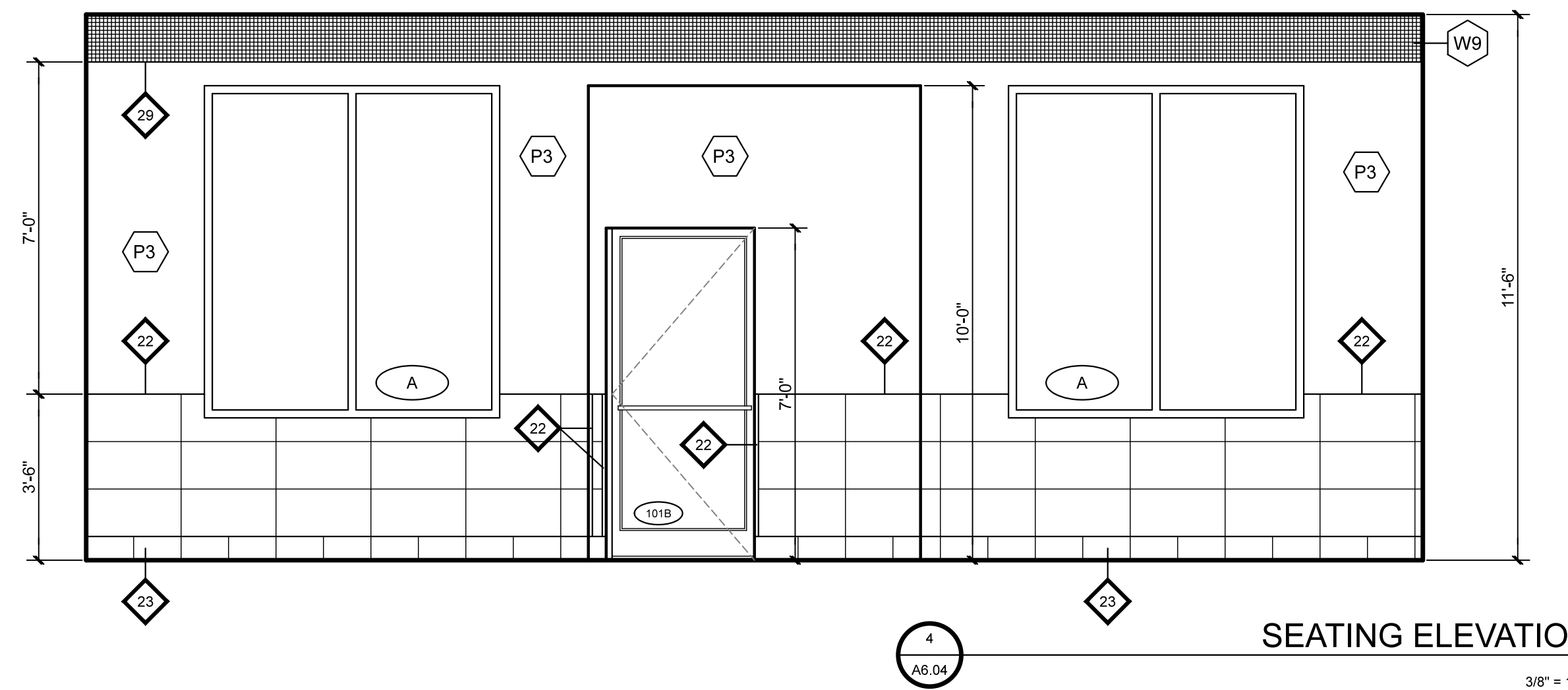




SONIC
SONIC DRIVE-IN RESTAURANT
2321 E. MARKLAND AVENUE
KOKOMO, IN 46901
STORE #6534

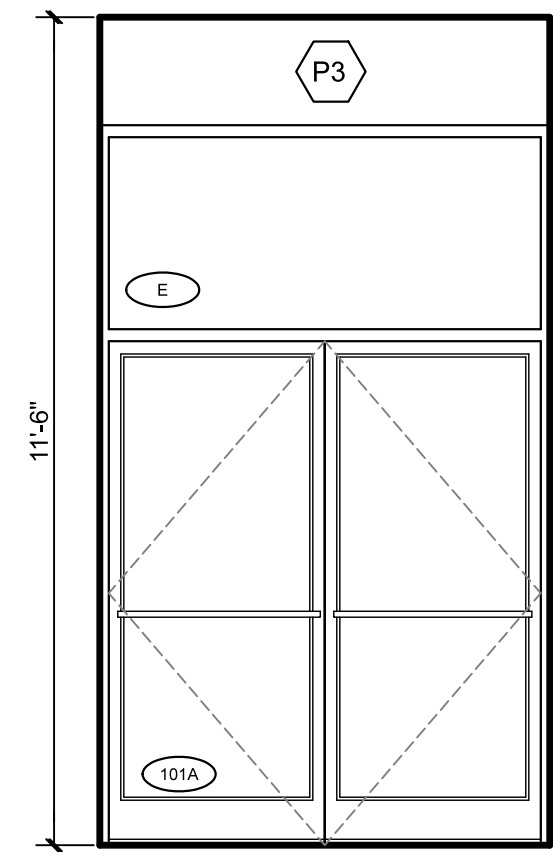


SEATING ELEVATION

3/8" = 1'-0"

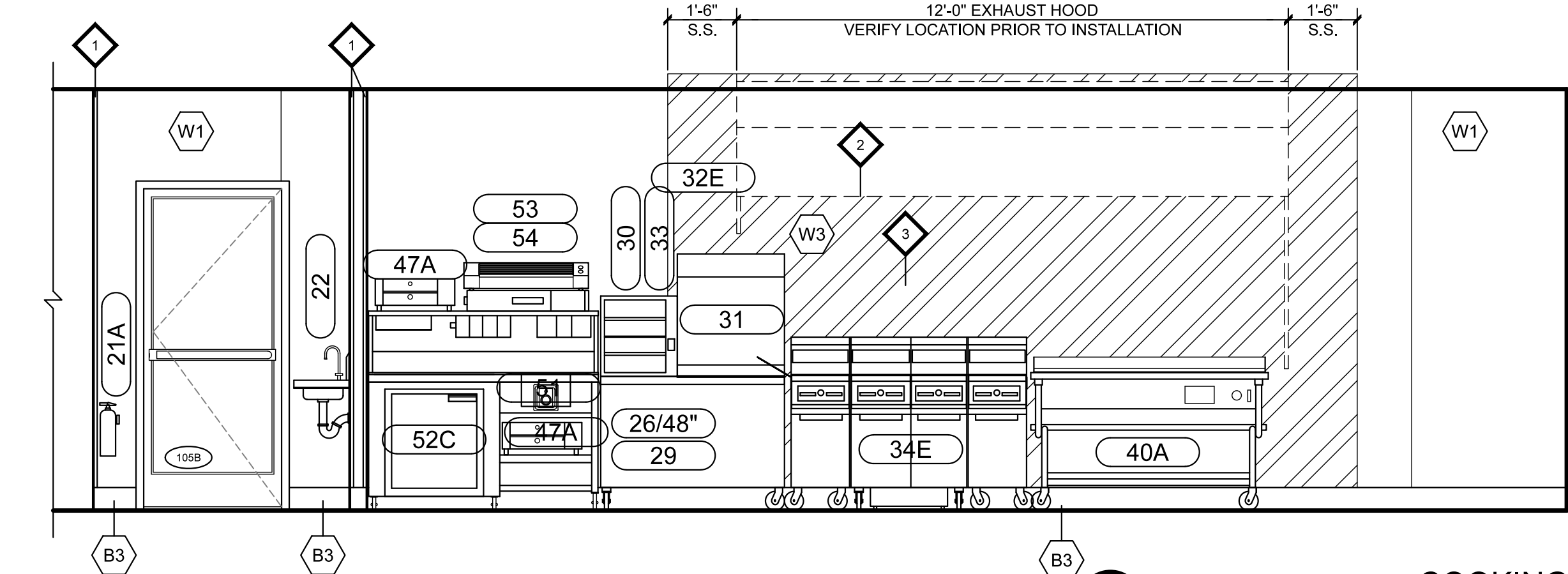
ELEVATION KEY NOTES

- ◆ KITCHEN CORNER GUARD - REFER TO 4/A5.02
- ◆ DASHED LINE INDICATES EXHAUST HOOD - REFER TO MECHANICAL DRAWINGS FOR EXACT LOCATION
- ◆ 24 GA. STAINLESS STEEL WALL PANEL TO EXTEND FROM TOP OF BASE TO 6" ABOVE CEILING (BY GENERAL CONTRACTOR)
- ◆ GRAB BAR - REFER TO B1.01
- ◆ SANITARY NAPKIN DISPOSAL UNIT (WOMENS ONLY)
- ◆ TOILET TISSUE DISPENSER - REFER TO B1.01
- ◆ MIRROR - REFER TO B1.01
- ◆ LAVATORY - REFER TO SHEET B1.01
- ◆ WATER CLOSET - REFER TO SHEET B1.01
- ◆ NOT USED
- ◆ PAPER TOWEL DISPENSER - REFER TO SHEET B1.01
- ◆ DASHED LINE INDICATES EXTENTS OF COOLER/FREEZER
- ◆ ELECTRICAL PANELS - REFER TO ELECTRICAL DRAWINGS FOR PLACEMENT AND QUANTITY
- ◆ SCONCE LIGHT FIXTURE - REFER TO ELECTRICAL DRAWINGS
- ◆ PROVIDE BACKING AS NECESSARY - REFER TO DIMENSION FOR MOUNTING HEIGHT
- ◆ NOT USED
- ◆ AVANT BOLD FONT IN CAST CLEAR ANODIZED ALUMINUM LETTERING BY SIGN LETTERS - 4" RESTROOM & 6-8" ORDER
- ◆ VERTICAL BABY CHANGER - REFER TO SHEET B1.01
- ◆ DASHED LINE INDICATES ORDER COUNTER
- ◆ ORDER MENU BOARD - MOUNT BOTTOM OF BOARD AT TOP OF TILE WAINSCOT
- ◆ URINAL - REFER TO SHEET B1.01
- ◆ SOAP DISPENSER - REFER TO SHEET B1.01
- ◆ BRUSHED STAINLESS STEEL SCHLUTER STRIP FOR TILE TRANSITION - MODEL QUADEC - REFER TO 1/A5.03
- ◆ TILE WAINSCOT & HIGH GLASS ACCENT - REFER TO 6/A6.02 ELEVATION 'D'
- ◆ FULL TILE WALL - REFER TO 6/A6.02 ELEVATION 'B'
- ◆ PORCELAIN & GLASS TILE WALL - REFER TO 6/A6.02 ELEVATION 'C'
- ◆ DASHED LINE INDICATES ROOF JOISTS
- ◆ CEILING FAN ATTACHED TO ROOF JOISTS - BOTTOM OF FAN @ 10'-0" A.F.F.
- ◆ PENDANT LIGHTS ATTACHED TO ROOF JOISTS - BOTTOM OF LIGHT @ 12'-6" A.F.F.
- ◆ BRUSHED STAINLESS STEEL TILE TRANSITION



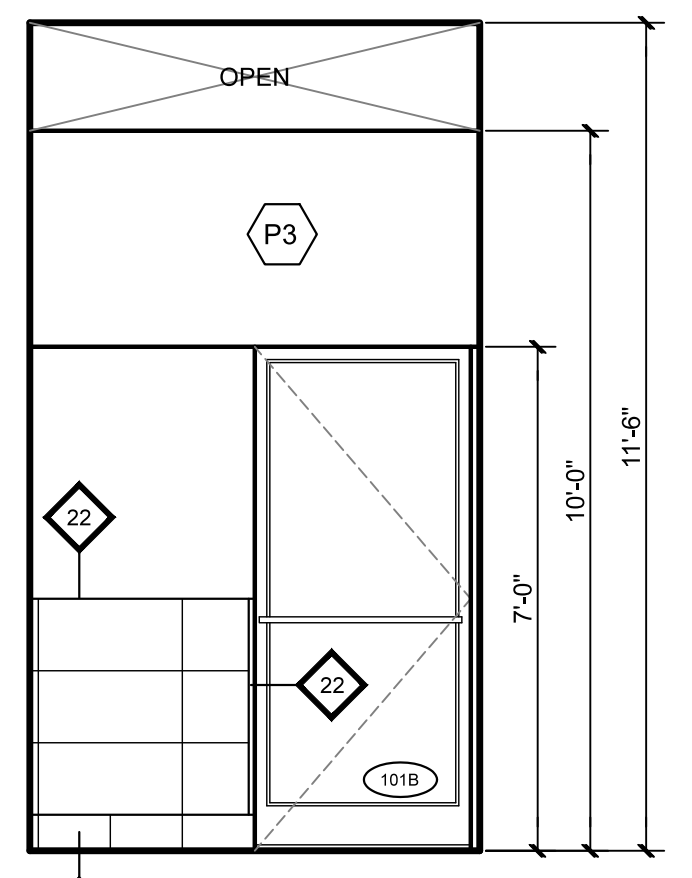
ENTRY ELEVATION

3/8" = 1'-0"



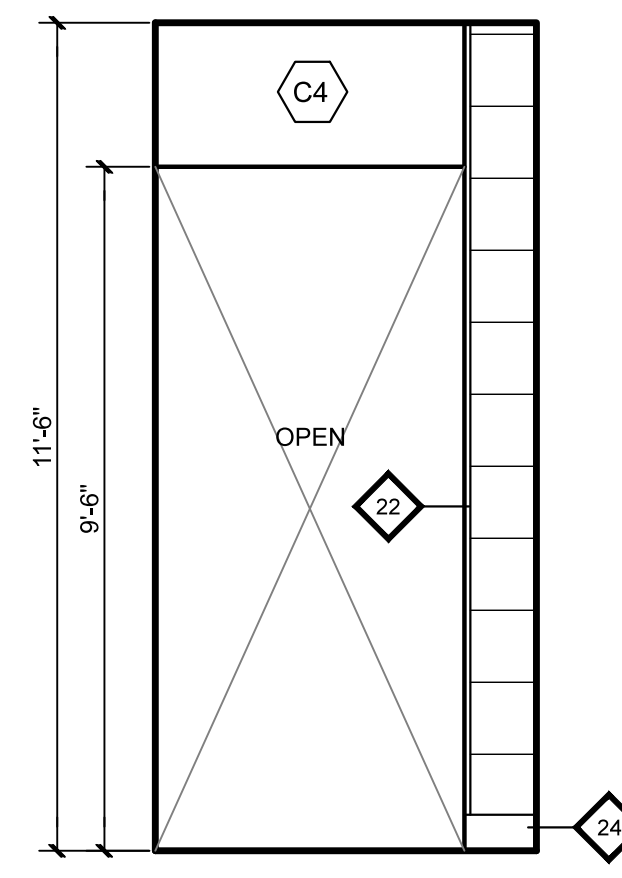
COOKING ELEVATION

3/8" = 1'-0"



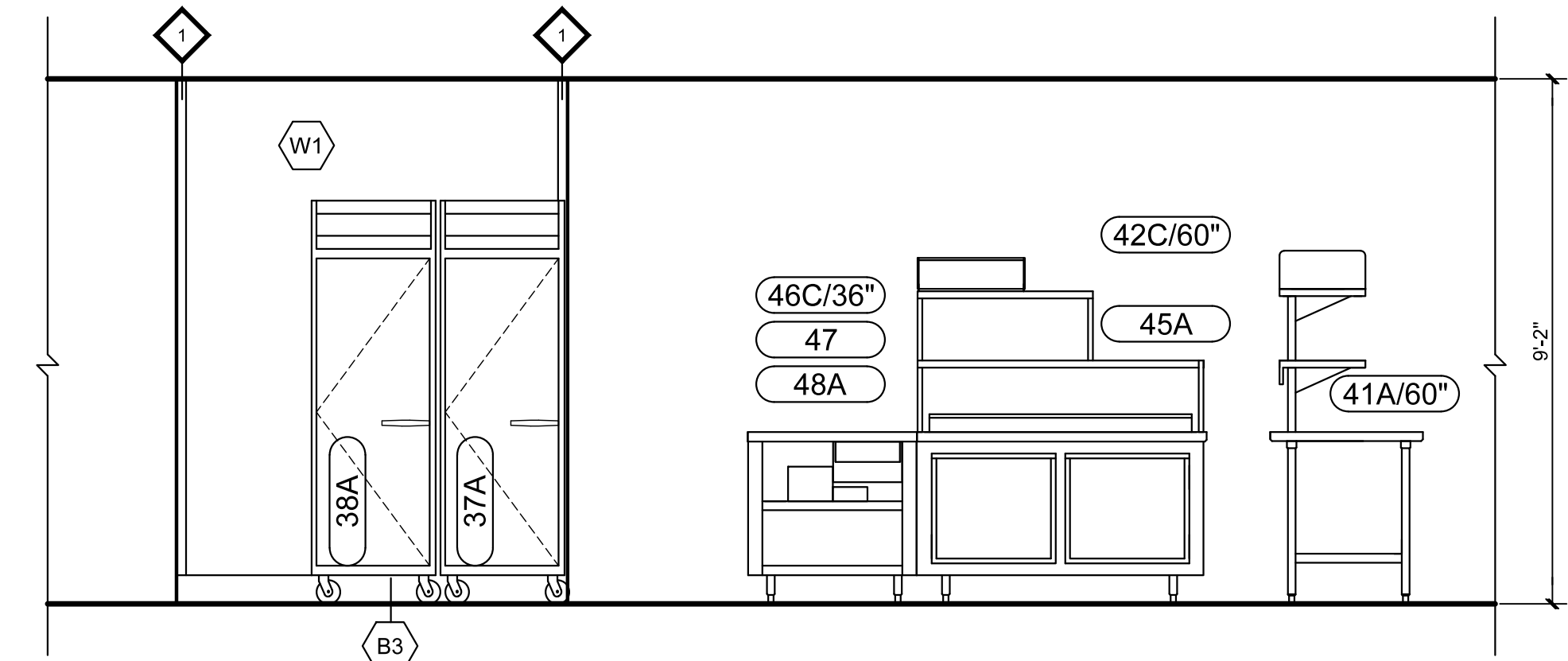
ENTRY ELEVATION

3/8" = 1'-0"



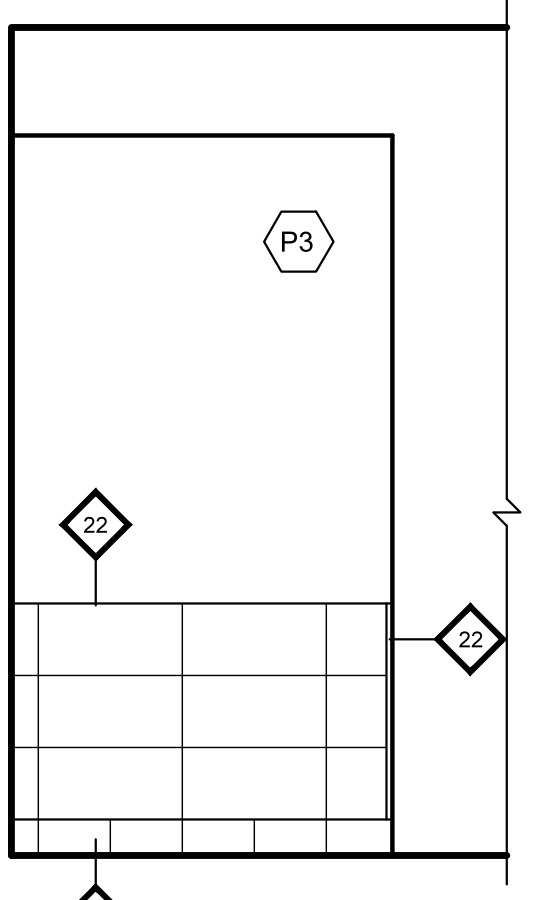
ENTRY ELEVATION

3/8" = 1'-0"



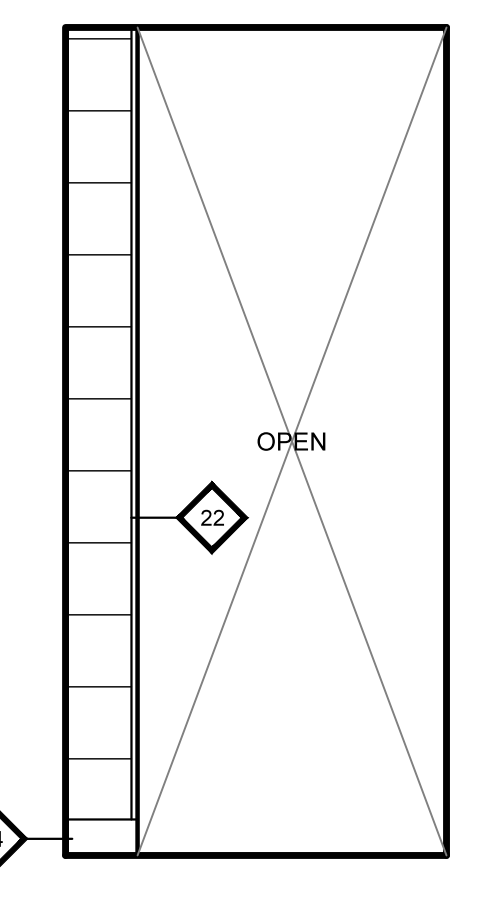
DUAL LINE ELEVATION

3/8" = 1'-0"



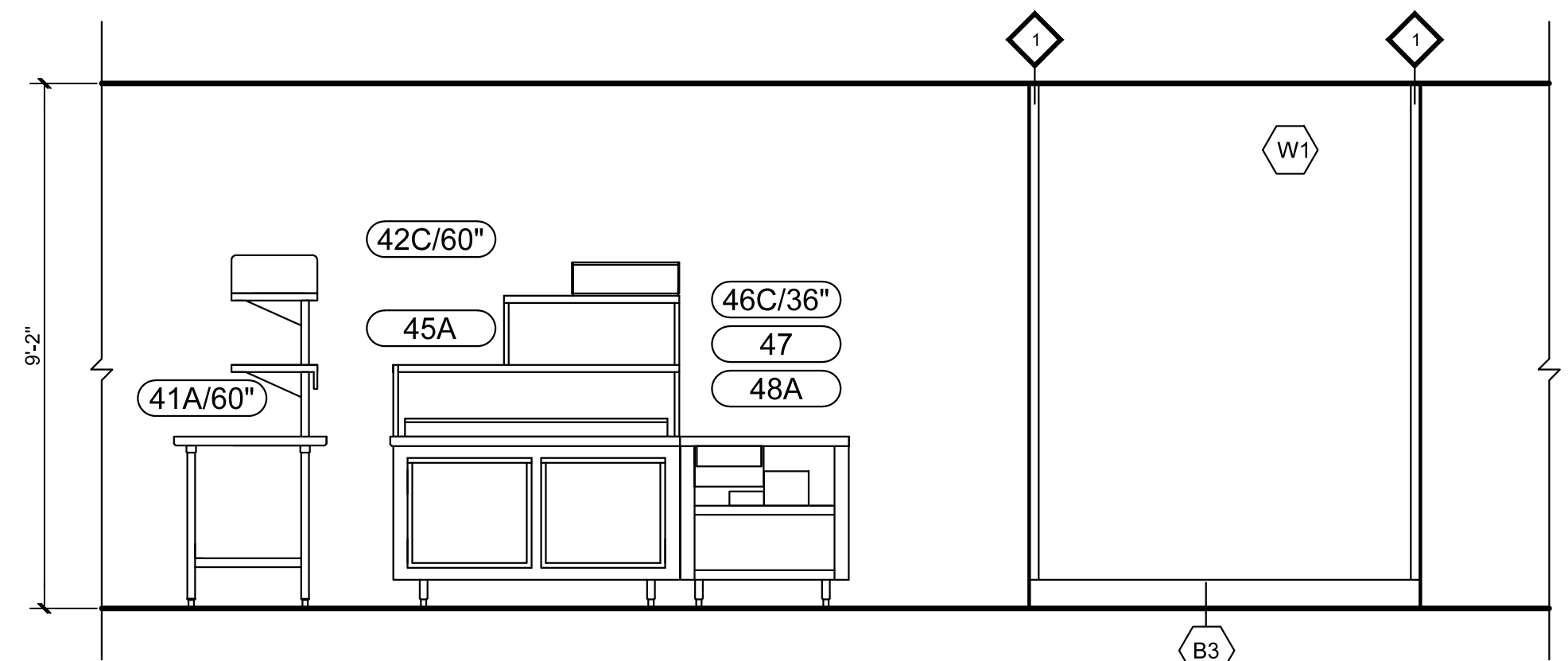
ENTRY ELEVATION

3/8" = 1'-0"



ENTRY ELEVATION

3/8" = 1'-0"



DUAL LINE ELEVATION

3/8" = 1'-0"