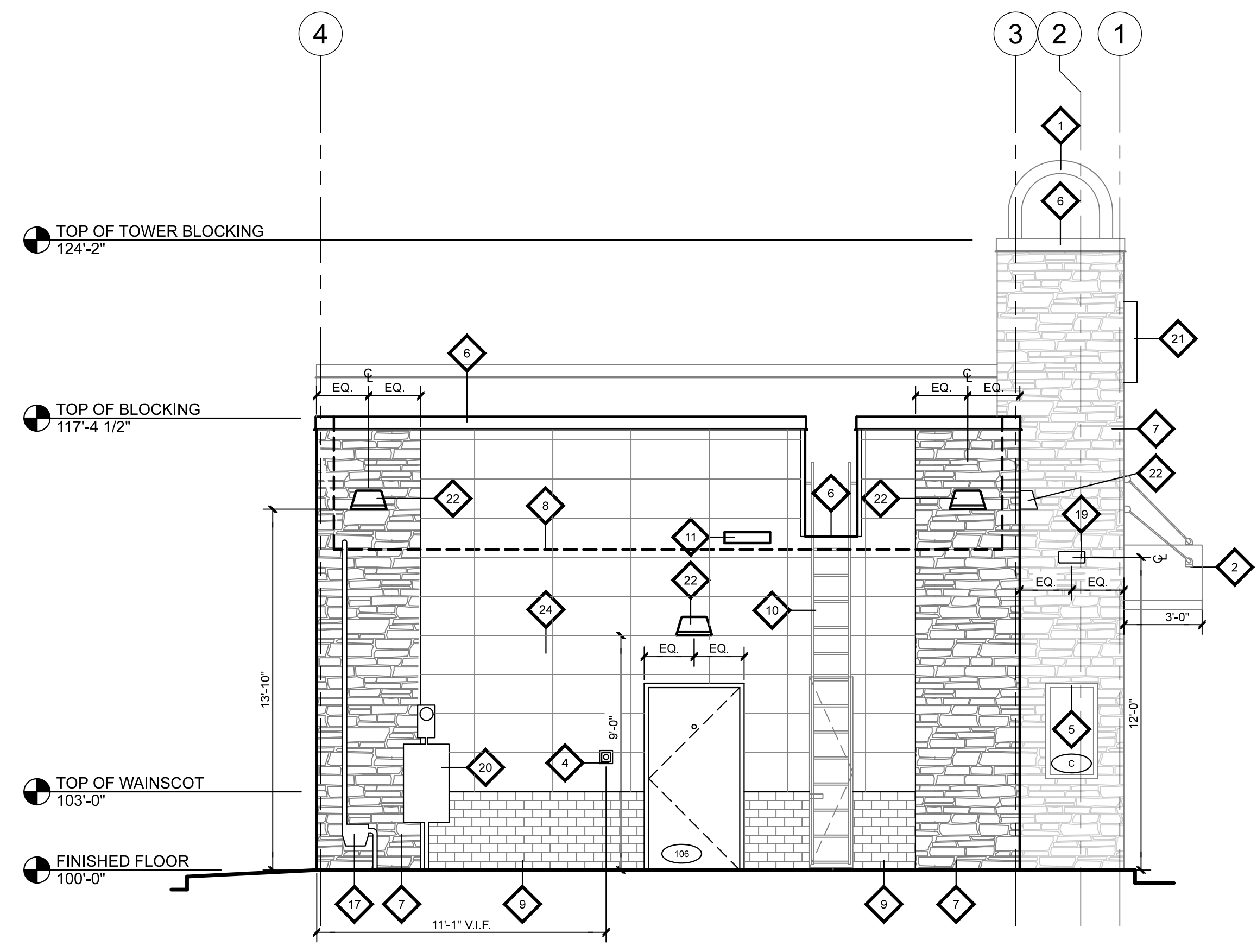
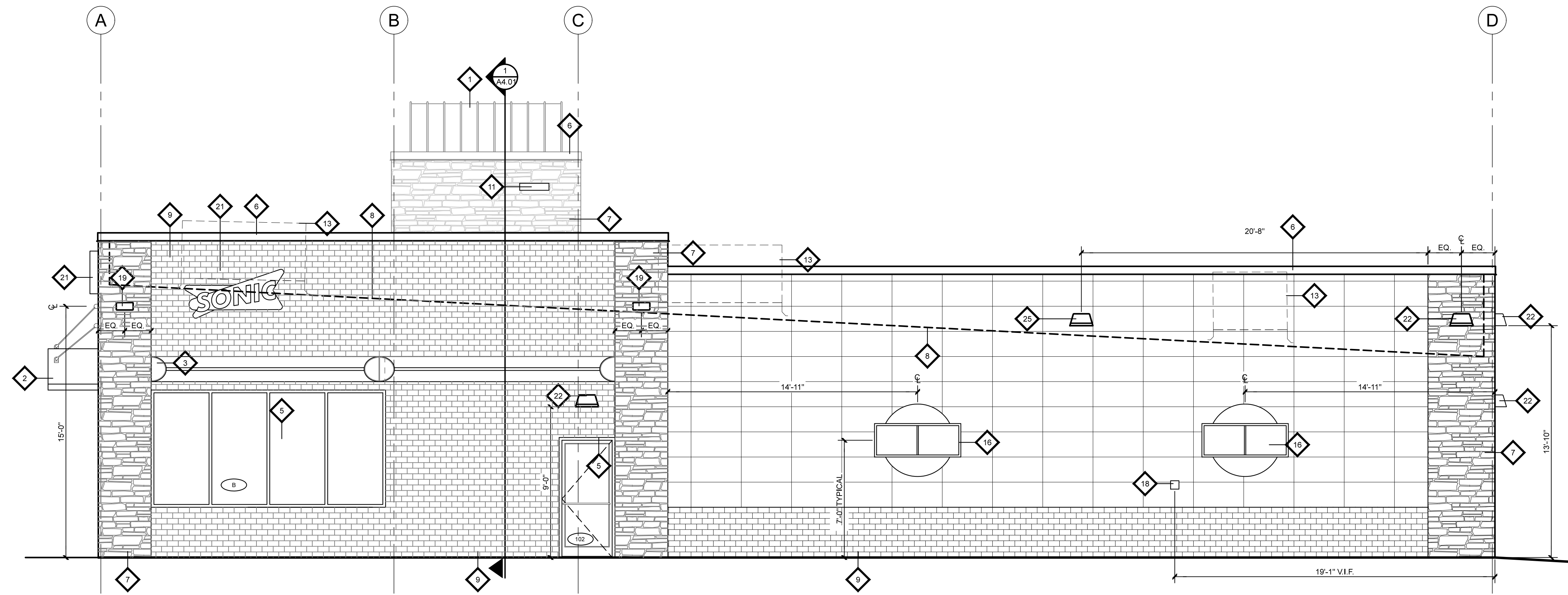


DRAWING LEGEND

GENERAL NOTES	
- DIMENSIONS OF REVEALS ARE TO CENTERLINE	
- VERIFY GRADE PRIOR TO CONSTRUCTION	
- DO NOT SCALE DRAWINGS	
- CONTACT ARCHITECT FOR ANY DISCREPANCIES ARE FOUND	
- REFER TO CANOPY DRAWINGS FOR ADDITIONAL PREMANUFACTURED CANOPY INFORMATION	
KEYED NOTES	
1. PREMANUFACTURED METAL YELLOW ROOF DOME WITH BLUE L.E.D. LIGHT STRIP LIGHTS - PROVIDED BY CANOPY VENDOR - REFER TO 13A5.01	18. LED SIGN OVER WINDOW, "FULL MENU ALL DAY" AND "FRESH EVERY TIME" - SIGN SUPPLIED BY OWNER AND INSTALLED BY GENERAL CONTRACTOR. UTILIZE SIGN OUTLET(S) AT INTERIOR. RUN LOW VOLTAGE WIRE THRU WALL TO SIGNS. (CENTER OVER WINDOW)
2. PREMANUFACTURED YELLOW METAL AWNING WITH L.E.D. STRIP LIGHTS - SUPPLIED BY CANOPY VENDOR - REFER TO 13A5.01	19. POSTER DISPLAY BOARD WITH BLUE DISK SUPPLIED BY OWNER. ELECTRICAL CONTRACTOR TO PROVIDE ELECTRICAL.
3. PREMANUFACTURED SILVER ALUMINUM CANOPY FASCIA WITH YELLOW AND RED L.E.D. STALL STARS - SUPPLIED AND INSTALLED BY CANOPY VENDOR - REFER TO 3A5.03	20. GAS SERVICE - PAINT TO MATCH COLOR #5
4. CO2 ACCESS PANEL 4'-4" A.F.F. TO CENTER	21. GREASE EXTRACTION SYSTEM CONNECTION 4'-4" TO CENTER
5. STOREFRONT DOORS AND WINDOW FRAMES - COLOR #1	22. SCIENCE DOWN LIGHT FIXTURE - REFER TO ELECTRICAL DRAWINGS - PROVIDE BACKING AS NECESSARY - REFER TO DIMENSION FOR MOUNTING HEIGHT
6. PREFINISHED METAL - COLOR #2	23. ELECTRICAL SERVICE - PAINT TO MATCH COLOR #5
7. STONE FINISH - COLOR #4	24. AVAILABLE SIGN LOCATION AS DETERMINED BY OWNER PER LOCAL SIGN ORDINANCES. SIGNS BY SIGN COMPANY. GENERAL CONTRACTOR TO PROVIDE ELECTRICAL.
8. DASHED LINE INDICATES ROOF LINE BEYOND	25. DOWN LIGHT FIXTURE - REFER TO ELECTRICAL DRAWINGS - PROVIDE BACKING AS NECESSARY - REFER TO DIMENSION FOR MOUNTING HEIGHT
9. BRICK FINISH - COLOR #5	26. PAYS STATION - 4" A.F.F. TO CENTER - REFER TO ELECTRICAL FOR ADDITIONAL INFORMATION
10. ROOF LADDER - REFER TO 3A5.02	27. SAND STONE FINISH - COLOR #6
11. OVERFLOW SCUPPER - REFER TO 11A5.02	
12. ADDRESS NUMBERS PER LOCAL FIRE DEPARTMENT / AUTHORITY - PROVIDED AND INSTALLED BY GENERAL CONTRACTOR	
13. DASHED LINES INDICATE ROOF MOUNTED EQUIPMENT - BEYOND	
14. ROUND LED DRIVE-THRU SIGN SUPPLIED BY OWNER. ELECTRICAL CONTRACTOR TO PROVIDE ELECTRICAL CONNECTION.	
COLOR SCHEDULE	
COLOR #1 WINDOW AND STOREFRONT FRAMES COLOR: DARK BRONZE ANODIZED MANUF: US ALUMINUM COOP.	COLOR #4 FIBER CEMENT BOARD PANEL - STONE MANUF: NICHHA MODEL: STACKED STONE - KURA STONE COLOR: DESERT
COLOR #2 PREFINISHED METAL SILL/CAP FLASHING PAINT COLOR: SW#7055 ENDURING BRONZE	COLOR #5 FIBER CEMENT BOARD - BRICK MANUF: NICHHA MODEL: PLYMOUTH BRICK COLOR: CRIMSON
COLOR #3 EXTERIOR HOLLOW METAL DOOR AND FRAMES PAINT COLOR: SW#7055 ENDURING BRONZE (INTERIOR DOOR NOTE: OIL PRIMER AND TOP COAT)	COLOR #6 FIBER CEMENT BOARD - SAND STONE MANUF: NICHHA MODEL: SAND STONE COLOR: DESERT BEIGE



2 EAST EXTERIOR ELEVATION
A3.02
1/4" = 1'-0"



1 SOUTH EXTERIOR ELEVATION
A3.02
1/4" = 1'-0"

CONSULTANT:

15 Ninth Avenue North, Hopkins, MN 55343
Phone: 952.941.8860 www.wilkusarch.com

CLIENT:

GEAUX SONIC LLC
1012 SOUTH COOPER STREET
GREENTOWN, IN 46901

PROJECT INFORMATION:

SONIC DRIVE-IN RESTAURANT
2321 E. MARKLAND AVENUE
KOKOMO, IN 46901
STORE #6534

SEAL:

THIS DOCUMENT IS CERTIFIED BY MICHAEL J. WILKUS, ARCHITECT.

SIGNATURE
MICHAEL J. WILKUS, ARCHITECT
LICENSE NUMBER: AR00570040
EXPIRATION DATE: 12-31-16

03-18-16
DATE

PROJECT NO.: 2015-1674
DRAWN BY: J.A.K.
CHECKED BY: M.J.W.

ISSUE: _____ DATE: _____
PERMIT SET: _____ 03-18-16

REVISION: _____ DATE: _____

PROJECT LOCATION:
KOKOMO, IN

SHEET NUMBER / TITLE:
A3.02
EXTERIOR ELEVATIONS