

DRAWING LEGEND

GENERAL NOTES

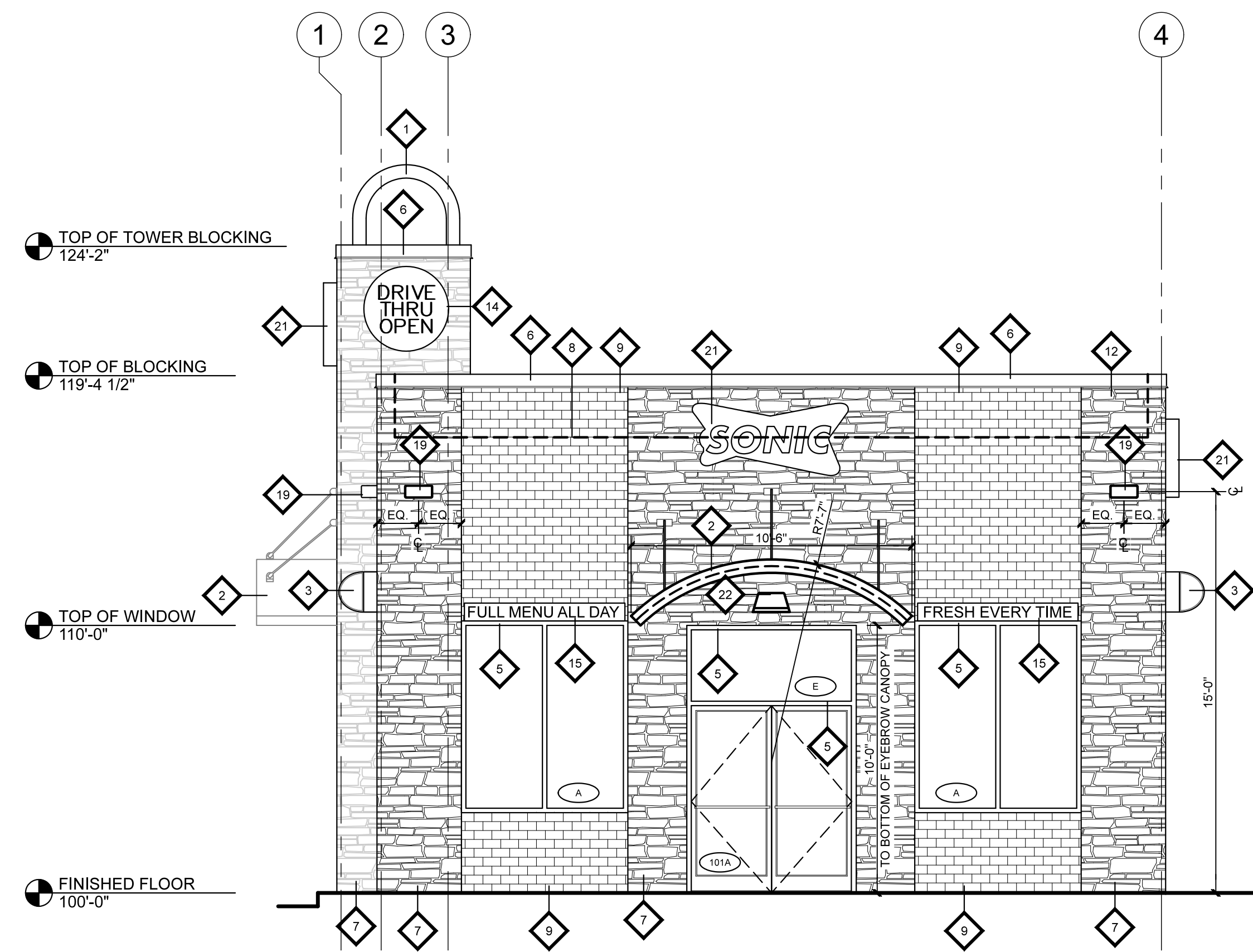
- DIMENSIONS OF REVEALS ARE TO CENTERLINE
- VERIFY GRADE PRIOR TO CONSTRUCTION
- DO NOT SCALE DRAWINGS
- CONTACT ARCHITECT FOR ANY DISCREPANCIES ARE FOUND
- REFER TO CANOPY DRAWINGS FOR ADDITIONAL PREMANUFACTURED CANOPY INFORMATION

KEYED NOTES

- 1. PREMANUFACTURED METAL YELLOW ROOF DOME WITH BLUE L.E.D. LIGHT STRIP LIGHTS - PROVIDED BY CANOPY VENDOR - REFER TO 13A5.01
- 2. PREMANUFACTURED YELLOW METAL AWNING WITH L.E.D. STRIP LIGHTS - SUPPLIED BY CANOPY VENDOR - REFER TO 13A5.01
- 3. PREMANUFACTURED SILVER ALUMINUM CANOPY FASCIA WITH YELLOW AND RED L.E.D. STALL STARS - SUPPLIED AND INSTALLED BY CANOPY VENDOR - REFER TO 3A5.03
- 4. CO2 ACCESS PANEL 4'-4" A.F.F. TO CENTER
- 5. STOREFRONT DOORS AND WINDOW FRAMES - COLOR #1
- 6. PREFINISHED METAL - COLOR #2
- 7. STONE FINISH - COLOR #4
- 8. DASHED LINE INDICATES ROOF LINE BEYOND
- 9. BRICK FINISH - COLOR #5
- 10. ROOF LADDER - REFER TO 3A5.02
- 11. OVERFLOW SCUPPER - REFER TO 11A5.02
- 12. ADDRESS NUMBERS PER LOCAL FIRE DEPARTMENT AUTHORITY - PROVIDED AND INSTALLED BY GENERAL CONTRACTOR
- 13. DASHED LINES INDICATE ROOF MOUNTED EQUIPMENT - BEYOND
- 14. ROUND LED DRIVE-THRU SIGN SUPPLIED BY OWNER - ELECTRICAL CONTRACTOR TO PROVIDE ELECTRICAL CONNECTION.
- 15. LED SIGN OVER WINDOW "FULL MENU ALL DAY" AND "FRESH EVERY TIME" - SIGN SUPPLIED BY OWNER AND INSTALLED BY GENERAL CONTRACTOR. UTILIZE SIGN OUTLET(S) AT INTERIOR - RUN LOW VOLTAGE WIRE THRU WALL TO SIGN. (CENTER OVER WINDOW)
- 16. POSTER DISPLAY BOARD WITH BLUE DISK SUPPLIED BY OWNER. ELECTRICAL CONTRACTOR TO PROVIDE ELECTRICAL.
- 17. GAS SERVICE - PAINT TO MATCH COLOR #5
- 18. GREASE EXTRACTION SYSTEM CONNECTION 4'-4" TO CENTER
- 19. SCISSOR DOWN LIGHT FIXTURE - REFER TO ELECTRICAL DRAWINGS - PROVIDE BACKING AS NECESSARY - REFER TO DIMENSION FOR MOUNTING HEIGHT
- 20. ELECTRICAL SERVICE - PAINT TO MATCH COLOR #5
- 21. AVAILABLE SIGN LOCATION AS DETERMINED BY OWNER PER LOCAL SIGN ORDINANCES. SIGNS BY SIGN COMPANY. GENERAL CONTRACTOR TO PROVIDE ELECTRICAL.
- 22. DOWN LIGHT FIXTURE - REFER TO ELECTRICAL DRAWINGS - PROVIDE BACKING AS NECESSARY - REFER TO DIMENSION FOR MOUNTING HEIGHT
- 23. PAYS STATION - 4" A.F.F. TO CENTER - REFER TO ELECTRICAL FOR ADDITIONAL INFORMATION
- 24. SAND STONE FINISH - COLOR #6

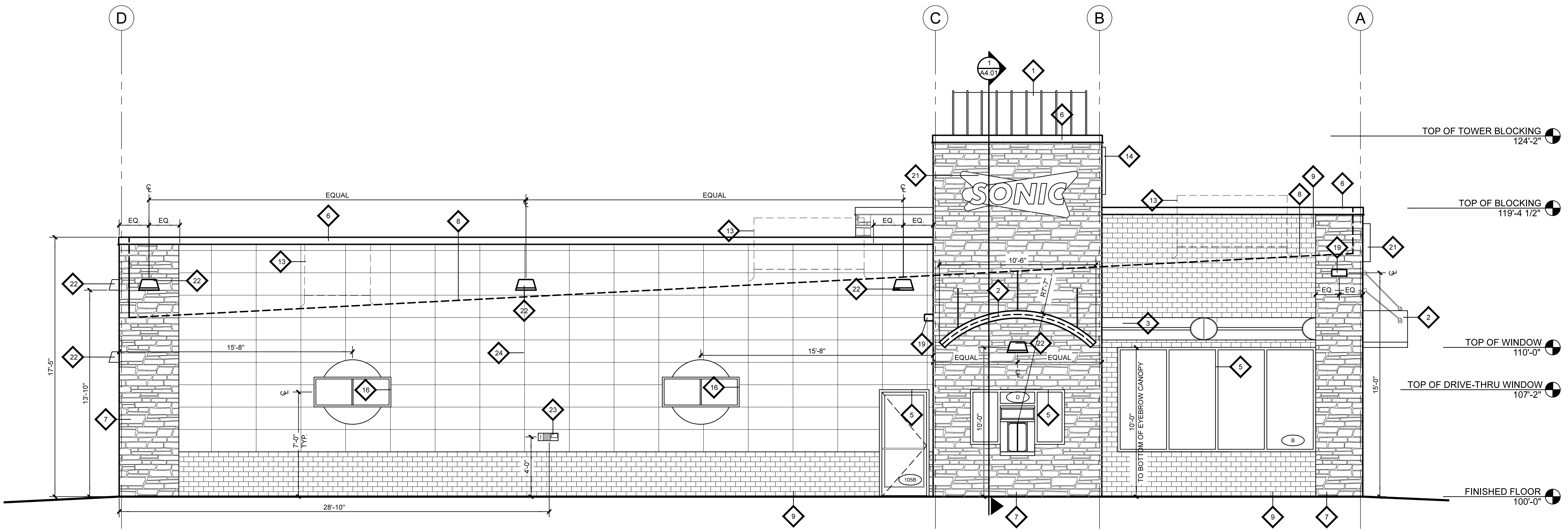
COLOR SCHEDULE

COLOR #1 WINDOW AND STOREFRONT FRAMES COLOR: DARK BRONZE ANODIZED MANUF. US ALUMINUM CORP.	COLOR #4 FIBER CEMENT BOARD PANEL - STONE MANUF. NICHHA MODEL: STACKED STONE - KURA STONE COLOR: DESERT
COLOR #2 PREFINISHED METAL SILLCAP FLASHING PAINT COLOR: SW#7055 ENDURING BRONZE	COLOR #5 FIBER CEMENT BOARD - BRICK MANUF. NICHHA MODEL: PLYMOUTH BRICK COLOR: CRIMSON
COLOR #3 EXTERIOR HOLLOW METAL DOOR AND FRAMES PAINT COLOR: SW#7055 ENDURING BRONZE (INTERIOR DOOR NOTE: OIL PRIMER AND TOP COAT)	COLOR #6 FIBER CEMENT BOARD - SAND STONE MANUF. NICHHA MODEL: SAND STONE COLOR: DESERT BEIGE



WEST EXTERIOR ELEVATION

1/4" = 1'-0"



NORTH EXTERIOR ELEVATION

1/4" = 1'-0"



CLIENT:

GEAUX SONIC LLC
1012 SOUTH COOPER STREET
GREENTOWN, IN 46901

PROJECT INFORMATION:

SONIC
SONIC DRIVE-IN RESTAURANT
2321 E. MARKLAND AVENUE
KOKOMO, IN 46901
STORE #6534

SEAL:
THIS DOCUMENT IS CERTIFIED BY MICHAEL J. WILKUS, ARCHITECT.

SIGNATURE
MICHAEL J. WILKUS, ARCHITECT
LICENSE NUMBER: AR00570040
EXPIRATION DATE: 12-31-16

03-18-16
DATE

PROJECT NO.: 2015-1674
DRAWN BY: J.A.K.
CHECKED BY: M.J.W.

ISSUE: _____ DATE: _____
PERMIT SET: _____ 03-18-16

REVISION: _____ DATE: _____

PROJECT LOCATION:
KOKOMO, IN

SHEET NUMBER / TITLE:
A3.01
EXTERIOR ELEVATIONS