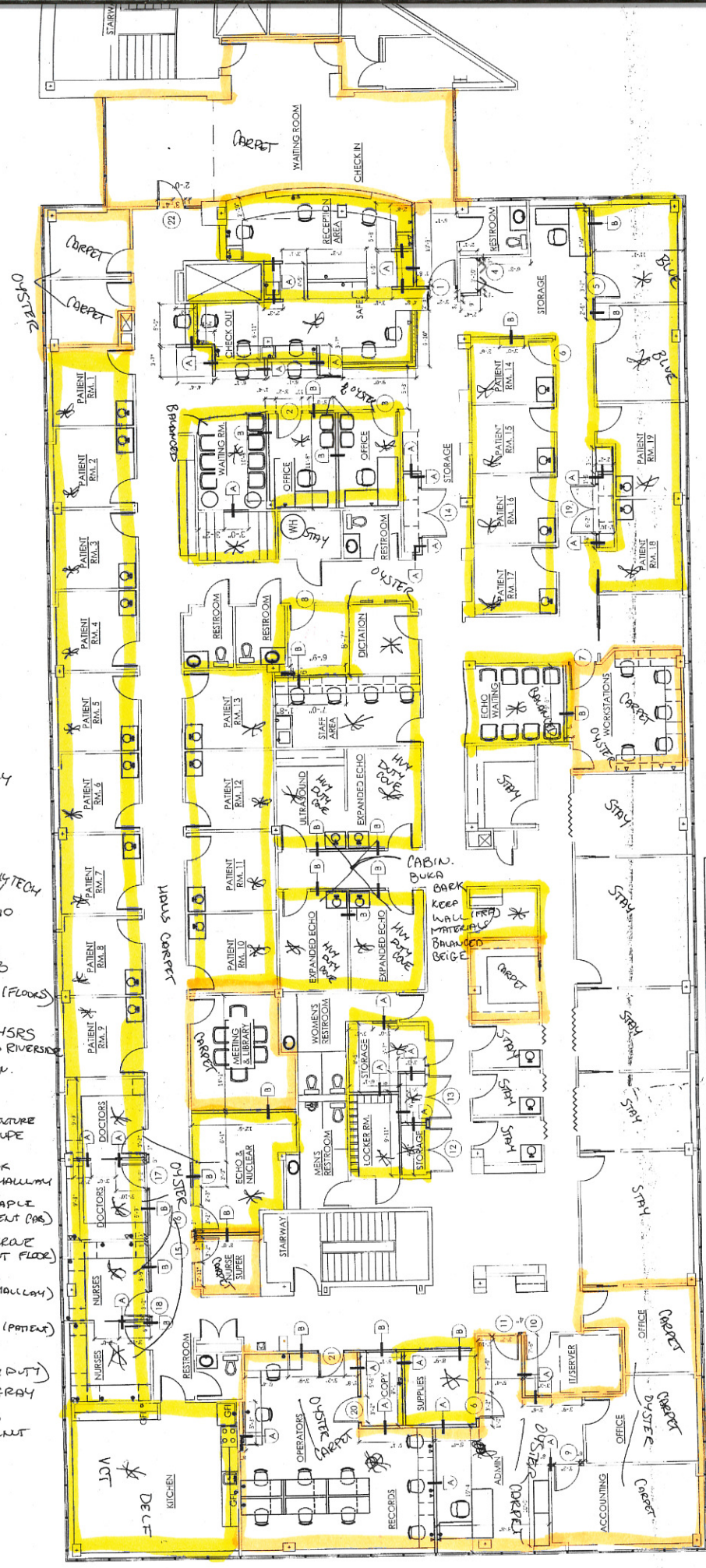


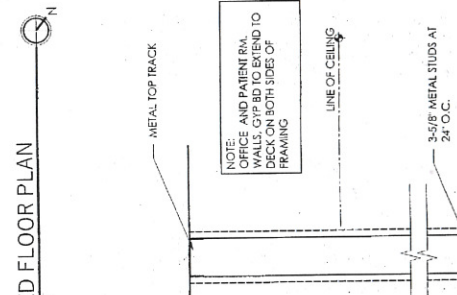
ELEVATION TAG	SECTION TAG	SCOPE TAGS	WALL TAG	DOOR TAG	WINDOW TAG
(A)	(1)	(A)	(A)	(A)	(A)
SEE SHEET A-2	SEE SHEET A-1	SEE SHEET A-1.1	SEE SHEET A-1.1	SEE SHEET A-1.1	SEE SHEET A-1.1

- PROTECT ALL OFFICES OYSTER BAY
- HOLYTECH CARPET DOMINO
- REFUGE 6228
- POWER (FLOOR)
- 9045RS WOODLAND RIVERSIDE WHITE CABIN.
- KITCHEN IMPERIAL TEXTURE 51901 TRAUDE
- BUKA BARK (CABIN) HALLWAY
- FUSION MAPLE (PATIENT FLS)
- WALNUT GRAPE (PATIENT FLOOR)
- BALANCED BEIGE (HALLWAY)
- MEDA RAINFALL (PATIENT)
- ECHO (HALLWAY) DARK GRAY
- COLUMBIAN LANT



DOOR TYPE SCH

TAG	DESCRIPTION	MATCH	HEIGHT
1	ENTRY DOOR	A	7'-0"
2	OFFICE DOOR	A	7'-0"
3	OFFICE DOOR	A	7'-0"
4	CLOSET BIFOLD DOOR	C	7'-0"
5	OFFICE DOOR	A	7'-0"
6	SUPPLY ROOM DOOR	A	7'-0"
7	WORK STATION DOOR	A	7'-0"
8	DICTATION ROOM DOOR	A	7'-0"
9	ACCOUNTANT ROOM DOOR	A	7'-0"
10	IT/RECEIVER ROOM DOOR	A	7'-0"
11	ADMIN ROOM DOOR	A	7'-0"
12	STORAGE ROOM DOOR	B	7'-0"
13	STORAGE ROOM DOOR	B	7'-0"



1 PROPOSED FLOOR PLAN
SCALE: 1/8" = 1'-0"

Vinyl Floor
Carpet
(ALL HALLS CARPET)

DOOR SCHEDULE

DOOR
FRAMING: 3'-2 1/2" x 3'-4 1/2" x 3/4" V.D. #16
MATERIAL: ALUMINUM
FINISH: PAINT TO MATCH EXIST.

HARDWARE
DOOR TO RECEIVE: 3 EACH HAGER 88129 4 1/2 A 1/2 A 652
PASSAGE: 1 EACH SCHLAGE AL 65 SAT 4 626
CLOSURE: 1 EACH HAGER 21 FX US28
SENICERS: 3 EACH HAGER 3072 RB8

