

NORTHPOINTE HEART CENTER

SUITE #300 - 27901 WOODWARD AVE

BERKLEY, MI

FLOOR PLAN SYMBOL LEGEND

| EXISTING | NEW | DEMOLITION | DESCRIPTION |
|----------|-----|------------|---|
| | | | WALL |
| | | | DOOR *EXISTING DOORS MAY BE REUSED FOR NEW LOCATIONS |
| | | | DUPLEX OUTLET |
| | | | DATA AND/OR PHONE - BY TENANTS VENDOR |
| | | | QUAD OUTLET |
| | | | DEDICATED OUTLET |
| | | | JUNCTION BOX |
| | | | FLOOR CORED POWER & VOICE DATA |
| | | | FLOOR CORED FURNITURE CONNECTION |



NEW IT ROOM CONFIGURATION MAY REQUIRE RELOCATION OF SERVER RACKS FOR EASIER ACCESS

PRELIMINARY FLOOR PLAN
1/8" = 1'-0"

CONSULTING ARCHITECT

Job Number: _____

FRIEDMAN
INTEGRATED REAL ESTATE SOLUTIONS 333D
34975 W. Twelve Mile Road, Suite 200
Farmington Hills, MI 48334
Phone: 248.348.2000 Fax: 248.848.3506
Web: www.friedmanrealestate.com

PRELIMINARY FLOOR PLAN
NORTHPOINTE HEART CENTER
27901 WOODWARD AVE #300
BERKLEY, MI

| DATE | ISSUED FOR: |
|-----------|-------------|
| 6-24-2015 | PRELIMINARY |
| 8-5-2015 | REVISION 1 |

DRAWN BY: CWL
CHECKED BY:

SEAL

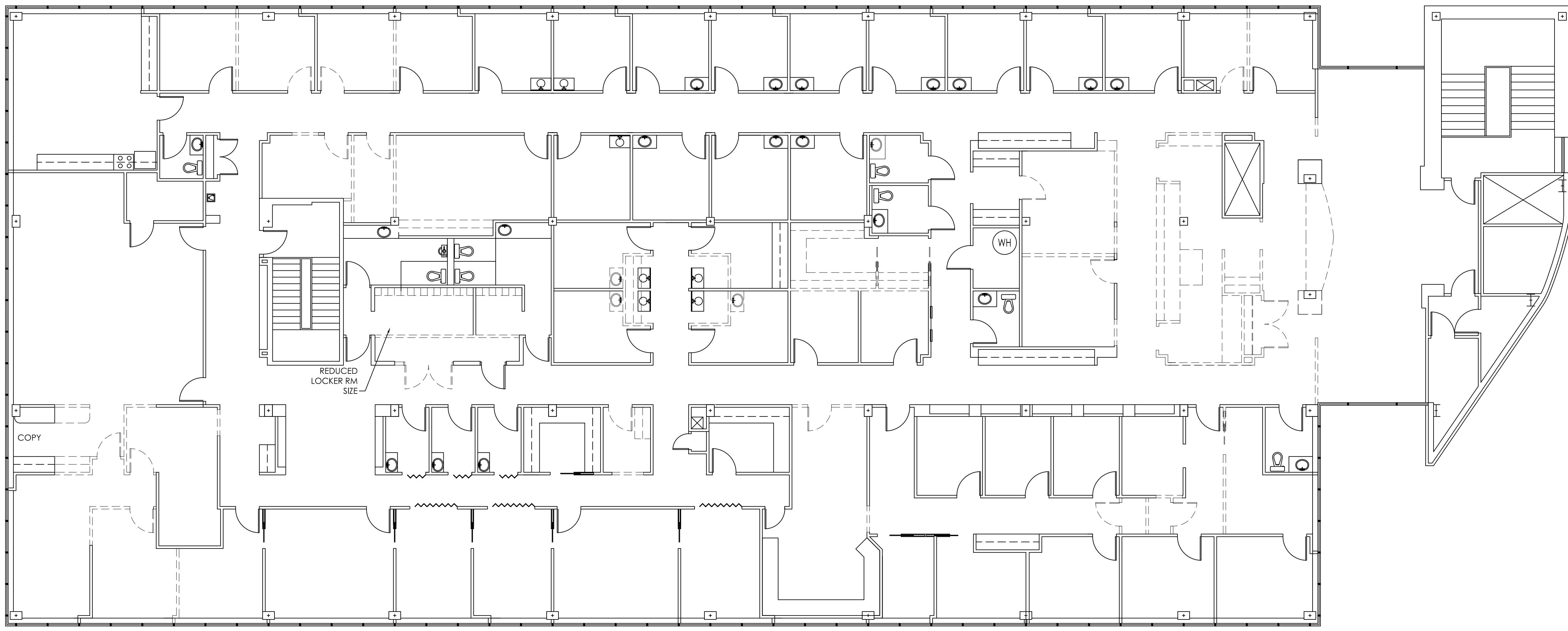
SHEET

P1



FLOOR PLAN SYMBOL LEGEND

| EXISTING | NEW | DEMOLITION | DESCRIPTION |
|----------|-----|------------|---|
| | | | WALL |
| | | | DOOR *EXISTING DOORS MAY BE REUSED FOR NEW LOCATIONS |
| | | | DUPLEX OUTLET |
| | | | DATA AND/OR PHONE - BY TENANTS VENDOR |
| | | | QUAD OUTLET |
| | | | DEDICATED OUTLET |
| | | | JUNCTION BOX |
| | | | FLOOR CORED POWER & VOICE DATA |
| | | | FLOOR CORED FURNITURE CONNECTION |



REQUIRED DEMOLITION
 1/8" = 1'-0"

PRELIMINARY FLOOR PLAN

NORTHPOINTE HEART CENTER

27901 WOODWARE AVE #300
BERKLEY, MI

| DATE | ISSUED FOR: |
|-----------|-------------|
| 6-26-2015 | PRELIMINARY |
| 8-5-2015 | REVISION 1 |
| | |
| | |

DRAWN BY: CWL
 CHECKED BY:

SEAL

SHEET

P1

