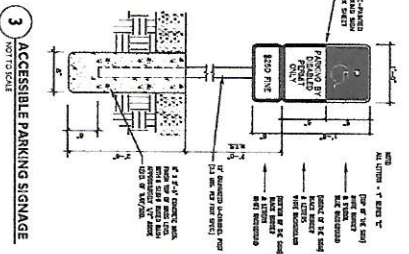
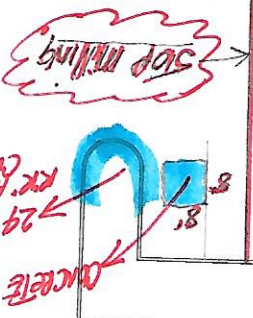
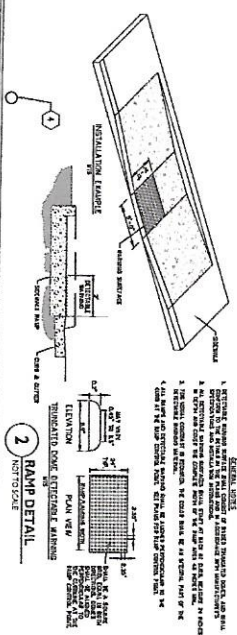
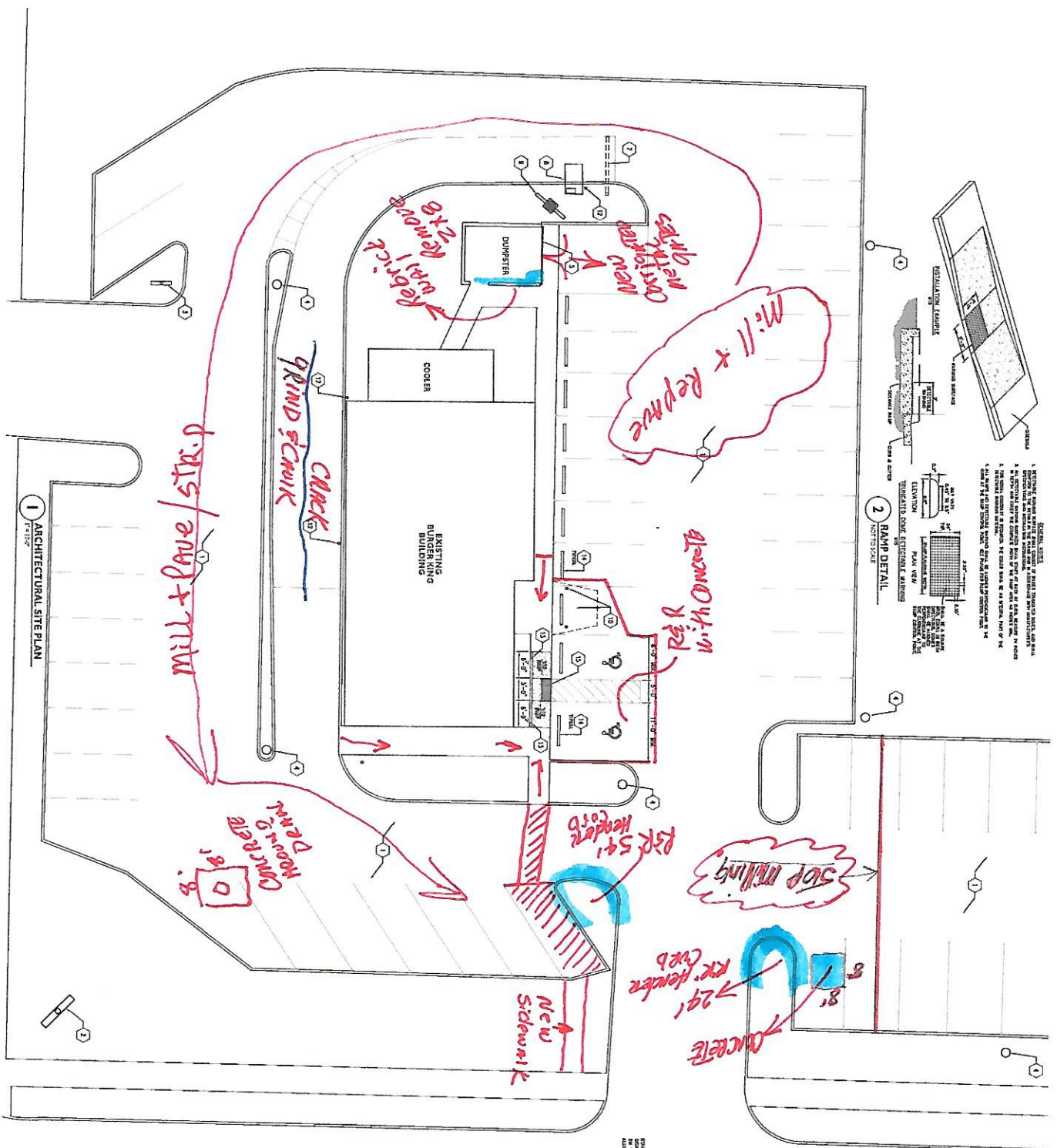


121 Carls R/R



- ### KEY NOTES
1. EXISTING CURB TO BE REMOVED FOR MILLING. SET BACK TO EXISTING 8' CURB. 8" x 8" SLAB ON STRIPS TO BE INSTALLED.
  2. EXISTING PAVEMENT TO BE MILLED AND REPAVED TO MATCH EXISTING PAVEMENT.
  3. EXISTING SIGNAGE TO BE REMOVED AND REPLACED WITH NEW SIGNAGE.
  4. EXISTING SIGNAGE TO BE REMOVED AND REPLACED WITH NEW SIGNAGE.
  5. EXISTING SIGNAGE TO BE REMOVED AND REPLACED WITH NEW SIGNAGE.
  6. EXISTING SIGNAGE TO BE REMOVED AND REPLACED WITH NEW SIGNAGE.
  7. EXISTING SIGNAGE TO BE REMOVED AND REPLACED WITH NEW SIGNAGE.
  8. EXISTING SIGNAGE TO BE REMOVED AND REPLACED WITH NEW SIGNAGE.
  9. EXISTING SIGNAGE TO BE REMOVED AND REPLACED WITH NEW SIGNAGE.
  10. EXISTING SIGNAGE TO BE REMOVED AND REPLACED WITH NEW SIGNAGE.
  11. EXISTING SIGNAGE TO BE REMOVED AND REPLACED WITH NEW SIGNAGE.
  12. EXISTING SIGNAGE TO BE REMOVED AND REPLACED WITH NEW SIGNAGE.
  13. EXISTING SIGNAGE TO BE REMOVED AND REPLACED WITH NEW SIGNAGE.
  14. EXISTING SIGNAGE TO BE REMOVED AND REPLACED WITH NEW SIGNAGE.
  15. EXISTING SIGNAGE TO BE REMOVED AND REPLACED WITH NEW SIGNAGE.
  16. EXISTING SIGNAGE TO BE REMOVED AND REPLACED WITH NEW SIGNAGE.
  17. EXISTING SIGNAGE TO BE REMOVED AND REPLACED WITH NEW SIGNAGE.
  18. EXISTING SIGNAGE TO BE REMOVED AND REPLACED WITH NEW SIGNAGE.
  19. EXISTING SIGNAGE TO BE REMOVED AND REPLACED WITH NEW SIGNAGE.
  20. EXISTING SIGNAGE TO BE REMOVED AND REPLACED WITH NEW SIGNAGE.

**BURGER KING**

RENOVEL, TO:  
BURGER KING # 6776  
1981 VAN DYKE AVENUE  
DETROIT, MICHIGAN 48213

2100 REVERDE PARKWAY  
SUITE 800  
ATLANTA, GA 30328  
P : 770 931 5033  
F : 770 931 5034

GPS  
HOSPITALITY

**CURRAN ARCHITECTURE**

5719 LAWTON LOOP E. DR. #212  
INDIANAPOLIS, IN 46216  
P : 317 288 0753  
F : 317 288 0753

PROJECT NUMBERS: 152045  
ARCHITECTURAL SITE PLAN  
**ASI.1**