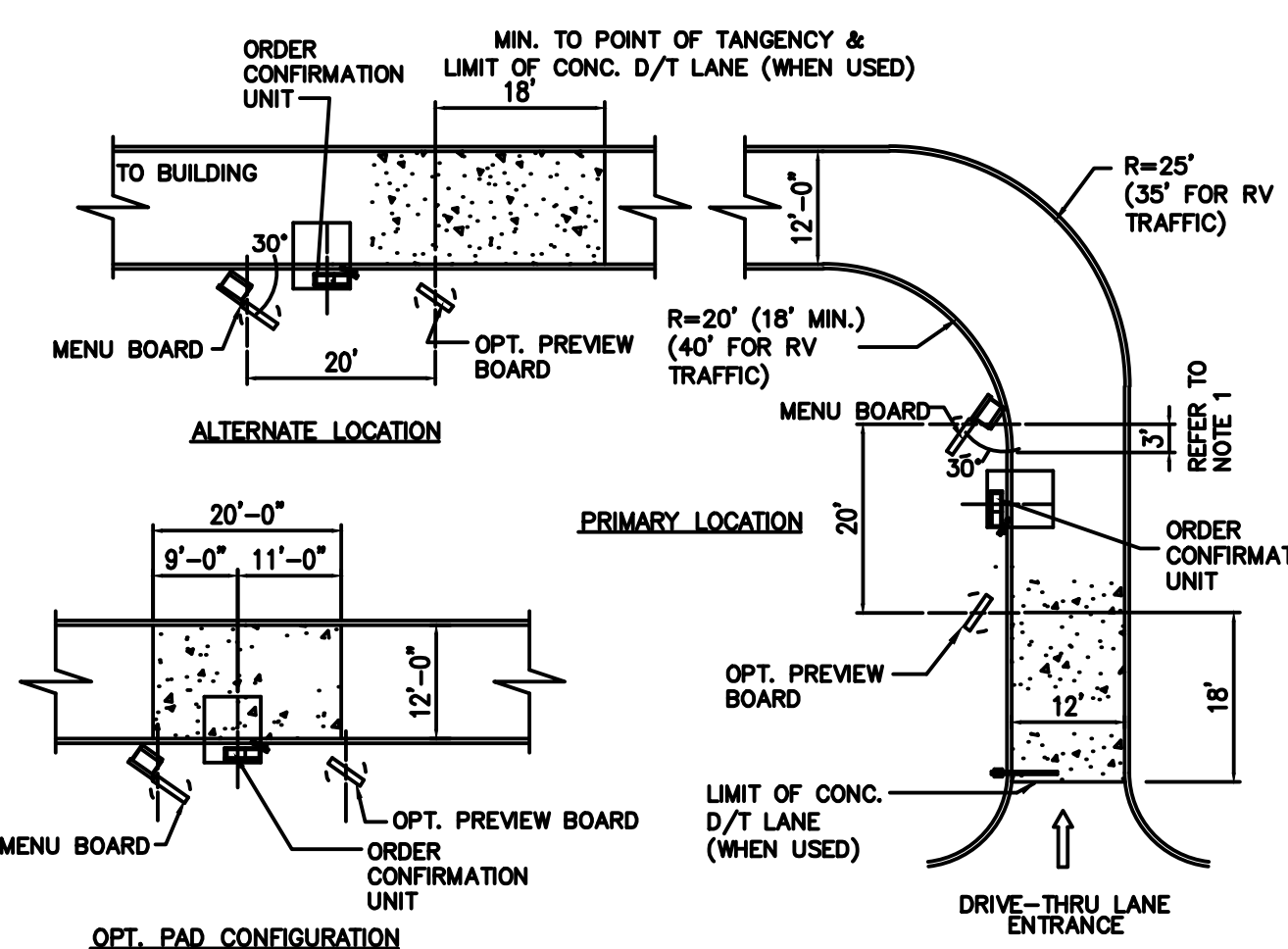


SEAL:

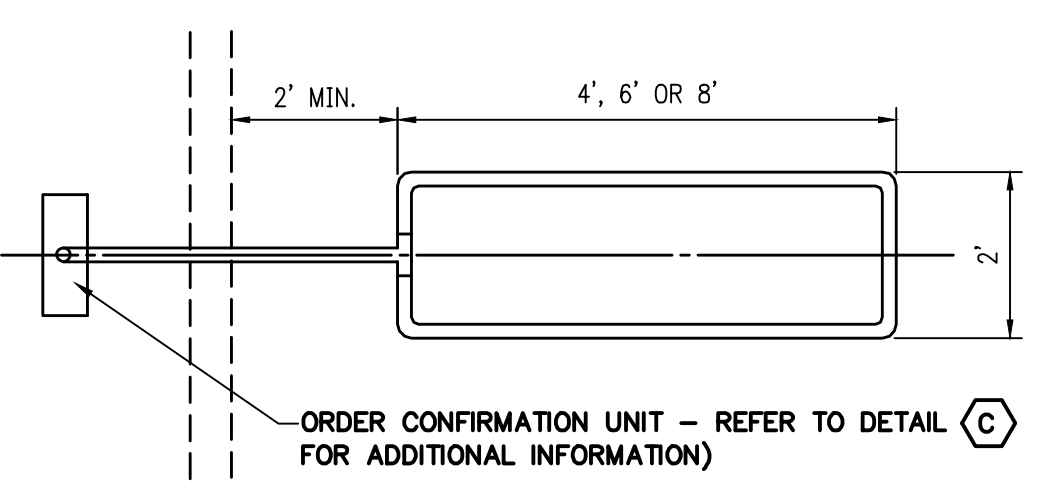


NOTES:

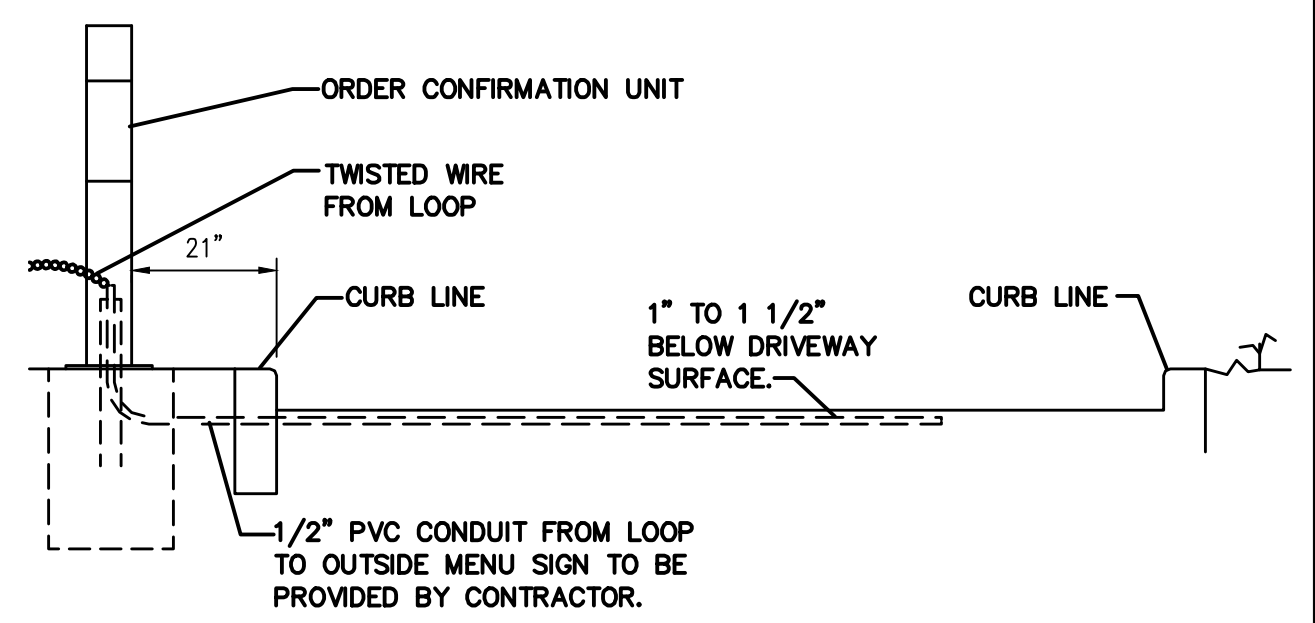
- DRAWING REFLECTS MENU BOARD IN PREFERRED LOCATIONS. FOR OPTIONAL LOCATION AND ADDITIONAL INFORMATION, REFER TO DETAIL I OF VIII AND SITE DETAIL CA.
- ORDER CONFIRMATION UNITS SHOULD BE 100' (MIN.) FROM FOOD DELIVERY WINDOW.
- IN NO CASE SHOULD THE ORDER STATIONS BE PLACED ON THE CURVE.
- CONCRETE DRIVE-THRU LANE IS OPTIONAL. WHEN USED, IT IS TO BE CONTINUOUS AS INDICATED ON THIS DRAWING TO 9' PAST CENTER OF CUSTOMER COURTESY POST AS INDICATED ON DETAIL TEMPLATE VII OF VIII. CONCRETE TO BE 3,500 P.S.I., 6" THICK, WITH 6X6-W2.9XW2.9 W.W.M. WITH PREMOULDED BITUMINOUS NON-EXTRUDING EXPANSION JOINTS AT 10' O.C. OPTIONAL TO POUR A 4" BASE SLAB OF 3000 P.S.I. CONCRETE, IMMEDIATELY FOLLOWED BY A 2" SURFACE SLAB OF 3500 P.S.I. CONCRETE DYED BLACK USING ADMIXTURE (CHROMIX C-24 "CHARCOAL" BY SCHOFIELD CO., OR EQUAL) INSURE THE 2" WEARING SURFACE BONDS TO THE BASE SLAB.
- IN LIEU OF FULL CONCRETE D/T LANE, 12' X 20' (MIN.) CONCRETE PAD MAY BE USED. (ALSO OPTIONAL)

GENERAL NOTES:

- IF LONGER LOOP PATTERNS (OTHER THAN SPECIFIED) ARE NEEDED, CONTACT MANUFACTURER/SUPPLIER.
- SEE LOOP SIZE AND PLACEMENT FOR THE PROPER NUMBER OF TURNS.
- IF NO CONDUIT IS PROVIDED, SAW CUT LEAD- IN SHOULD CONTINUE THRU CONC. CURB TO BASE OF ORDER CONFIRMATION UNIT.
- MITER CORNERS OF SAW CUT TO PREVENT SHARP TURNS WHICH COULD CUT THE WIRE INSULATION.
- DETECTOR LOOPS ARE REQUIRED AT DRIVE THRU ORDER CONFIRMATION UNIT AND AT EACH DRIVE THRU WINDOW. REFER TO MANUFACTURER'S INSTALLATION INSTRUCTIONS.
- FOR TECHNICAL ASSISTANCE AND PARTS CONTACT:
3M SOUND PRODUCT (800) 328-0633
OR
HM ELECTRONICS, INC. (800) 989-6684



TOP VIEW
NTS



SIDE VIEW
NTS

LOOP SIZE	NO. OF TURNS
2 FT X 4 FT	6
2 FT X 6 FT	5
2 FT X 8 FT	4

2 PRE-FAB DETECTOR LOOP NTS

OPT. PAD CONFIGURATION

1 SINGLE DRIVE THROUGH CONFIGURATION 1"=20'

DEMOLITION NOTES

- PRIOR TO COMMENCEMENT OF DEMOLITION THE CONTRACTOR WILL COORDINATE HIS ACTIVITIES WITH ALL THE UTILITY COMPANIES SERVING THIS AREA. CONTRACTOR IS TO COORDINATE FULLY WITH UTILITY COMPANIES ON EXACT LOCATION OF UNDERGROUND UTILITIES PRIOR TO EXCAVATION.
- THE CONTRACTOR IS RESPONSIBLE FOR PROPER DISPOSAL OF ALL WASTE MATERIAL.
- WHERE PAVING OR STRUCTURES ARE TO BE REMOVED WHICH ABUT OR ARE A PART OF CONNECTED FACILITIES THAT ARE OFF-SITE, RESTORATION OF ANY DAMAGE THAT MIGHT RESULT FROM DEMOLITION IS TO BE RESTORED TO A CONDITION EQUAL TO OR BETTER THAN EXISTING UNLESS SPECIFICALLY EXEMPTED BY THE PLANS. THE COST FOR SUCH RESTORATION SHALL BE INCIDENTAL TO OTHER CONSTRUCTION AND NO EXTRA COMPENSATION WILL BE ALLOWED.
- THE LOCATION OF ALL EXISTING UTILITIES, STORM DRAINAGE AND TREES SHOWN ON THE PLANS HAVE BEEN DETERMINED FROM AVAILABLE INFORMATION AND IS GIVEN FOR THE CONVENIENCE OF THE CONTRACTOR. THE OWNER OR ENGINEER ASSUMES NO RESPONSIBILITY FOR ACCURACY. PRIOR TO THE START OF DEMOLITION THE CONTRACTOR SHALL VISIT THE SITE AND DETERMINE THE EXISTENCE & LOCATION OF ALL STRUCTURES, UTILITIES & TREES SHOWN OR NOT ON THE PLANS, WHICH WOULD NEED TO BE REMOVED OR PRESERVED.
- THE CONTRACTOR IS TO COORDINATE THE RELOCATION OR REMOVAL OF ALL OVERHEAD/UNDERGROUND UTILITIES, UTILITY POLES, LIGHTS AND LINES IN THE RIGHT-OF-WAY AND ON THE PROPERTY WITH THE APPROPRIATE SERVICE PROVIDER.
- THE CONTRACTOR SHALL REFERENCE AND RESTORE PROPERTY CORNERS AND LAND MARKERS DISTURBED DURING CONSTRUCTION. (UNDER THE DIRECTION OF A STATE REGISTERED LAND SURVEYOR).

SITE NOTES:

- CONCRETE DRIVE-THRU APPROACH TO BE 3,500 PSI CONCRETE 6" THICK WITH 6X6-W2.9XW2.9 W.W.M. WITH PREMOULDED BITUMINOUS NON-EXTRUDING EXPANSION JOINTS AT 10' O.C.
- EXISTING SANITARY SEWER AND WATER SERVICE TO THE EXISTING BUILDING ARE TO REMAIN.
- NOTIFY THE ARCHITECT IMMEDIATELY OF ANY DISCREPANCIES BETWEEN THE PLAN AND FIELD ELEVATIONS.
- REPAIR ALL EXISTING DAMAGE CURB; REPAIR POT HOLES WITHIN PARKING AREAS; SOD ALL AREAS DISTURBED DURING CONSTRUCTION AND ALL OPEN AREAS. INCLUDE THE COST OF REPAIRS AND SOODING IN BID PACKAGE.
- LANDSCAPING BY LANDSCAPING CONTRACTOR (BY OWNER).

SITE CONCRETE NOTES

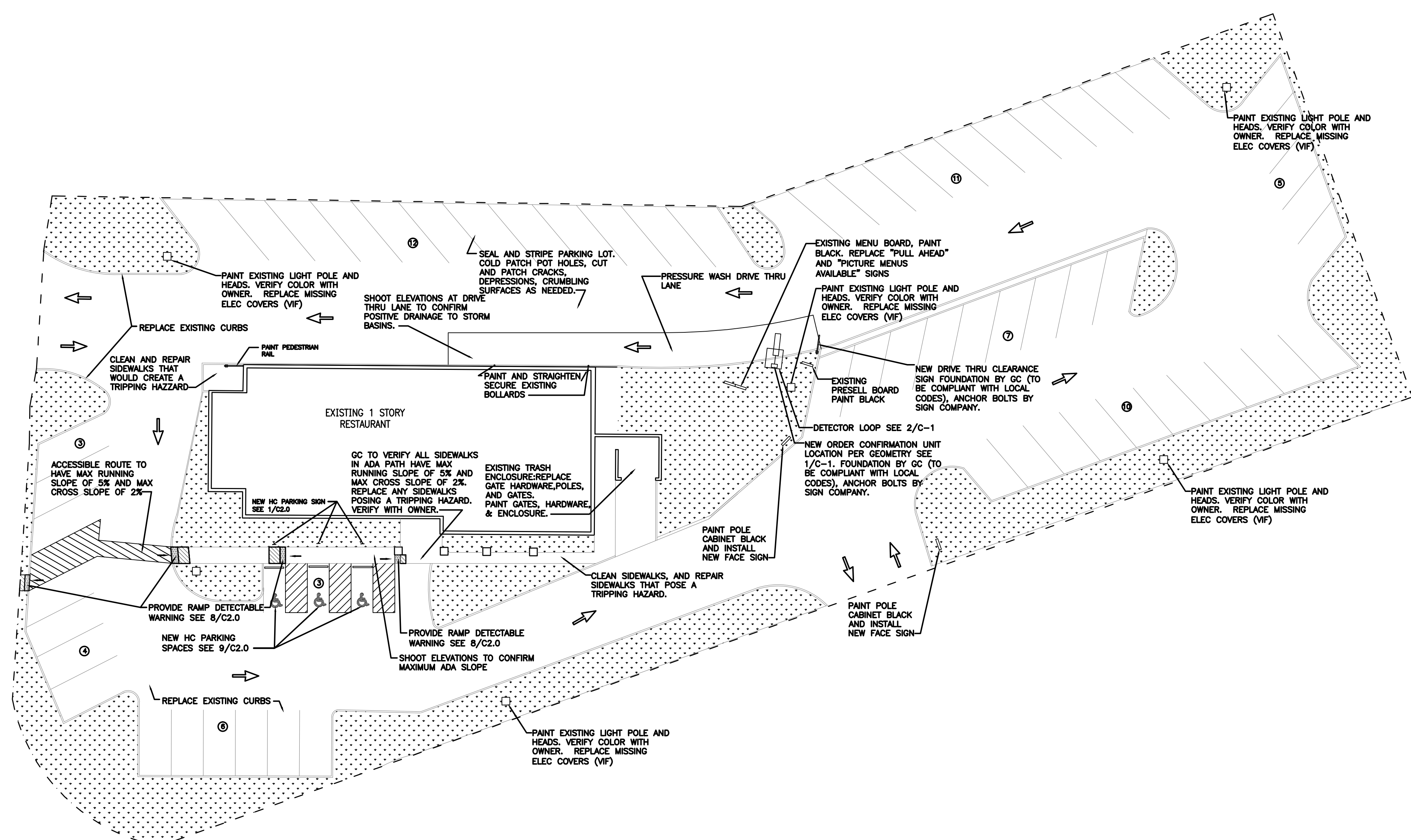
- PROVIDE THE FOLLOWING SIDEWALK REQUIREMENTS UNLESS OTHERWISE SHOWN OR NOTED ON THE DRAWINGS:
- SIDEWALKS SHALL BE 5" THICK WITH 6"x6" W1.4XW1.4 W.W.M. ON 4" COMPACTED GRANULAR BASE
 - CONTROL JOINTS (CJ) SHALL BE SPACED SO AS TO OBTAIN APPROXIMATELY SQUARE SECTIONS W/ A MAXIMUM SPACING OF 5'-8" O.C.
 - EXPANSION JOINTS (EJ) SHALL BE SPACED AT 40'-0" O.C. AND WHERE SIDEWALK ABUTS A STRUCTURE
- PROVIDE THE FOLLOWING CURB REQUIREMENTS UNLESS OTHERWISE SHOWN OR NOTED ON THE DRAWINGS:
- CURBS SHALL HAVE CONTROL JOINTS AT 15'-0" O.C. AND EXPANSION JOINTS AT 60'-0" O.C. AND AT TANGENT POINTS OF ALL RADII OF LESS THAN 100'-0".
 - CURB CONTROL JOINTS SHALL BE 1" DEEP SAW CUTS MADE WITHIN 48 HOURS OF PLACING CONCRETE. MAXIMUM SPACING TO BE 15'-8" O.C.
 - CURB REINFORCING STEEL SHALL NOT RUN THROUGH EXPANSION JOINTS.
 - LAP BARS 12" AT ALL SPLICES.
 - REINFORCING STEEL DOWELS SHALL BE PROVIDED AT ALL CURB CONSTRUCTION JOINTS.
 - EXPANSION JOINTS SHALL BE 1/2" WIDE PREFORMED FILLER, FULL DEPTH.
 - ALL CURB RETURN RADII ARE 5' UNLESS NOTED.

SITE ASPHALT NOTES

- PROVIDE THE FOLLOWING ASPHALT REQUIREMENTS UNLESS OTHERWISE SHOWN OR NOTED ON THE DRAWINGS:
- PRIOR TO OVERLAY REMOVE AND REPLACE DETERIORATED ASPHALT AND POTHOLES (CONFIRM AREAS WITH OWNER)
 - ADJUST SEWER COVERS TO PROPER HEIGHT TO BE LEVEL WITH 1 1/2" OVERLAY
 - MACHINE GRIND NECESSARY AREAS TO ACHIEVE PROPER WATER FLOW.
 - INSTALL SCRATCH LEVELING COURSE ON ENTIRE AREA TO FILL ALL DIPS AND HOLES AND FLATTEN OUT LOT.
 - PRIME AREA WITH SS-1 EMULSION.
 - INSTALL NEW 1 1/2" COMPACTED DEPTH SURFACE COURSE OF CLASS - 11 MODIFIED BITUMINOUS ON THE ENTIRE AREA TO FORM A SMOOTH TRANSITION.
 - RE STRIPE PER DRAWINGS

BURIED UTILITIES NOTE

BURIED UTILITIES ARE SHOWN AT THEIR APPROXIMATE LOCATION BASED UPON INFORMATION OBTAINED FROM ARCHIVES AND FIELD EVIDENCE. OTHER BURIED UTILITIES MIGHT EXIST ON THE SUBJECT SITE WHICH ARE NOT SHOWN ON THIS DRAWING. USE EXTREME CAUTION DURING EXCAVATION PROCEDURES AND CONTACT JULIE @ 1-800-892-8123 FOR EXACT LOCATION OF BURIED FACILITIES PRIOR TO EXCAVATION OPERATIONS.



SITE PLAN 1/16" = 1'-0"

01.04.15 ISSUE FOR PERMIT
01.04.15 ISSUE FOR BID
NO DATE REMARKS

REVISIONS

RESTAURANT FOR:
TOMS King
335 COMMERCE DRIVE
CRYSTAL LAKE, IL 60014
815-444-2008
BURGER KING CORPORATION

BURGER KING REMODEL
BK10814
5725 HEASLEY ROAD
MENTOR, OH 44060

PROJECT NO: 2015.0348
DATE: 01.04.15

C1.0
SITE PLAN

CHECKED: JN DRAWN: HP

INTERPLAN, LLC. RESERVES COPYRIGHT & OTHER RIGHTS RESTRICTING THESE DOCUMENTS TO THE ORIGINAL SITE OR PURPOSE FOR WHICH THEY WERE PREPARED. REPRODUCTIONS, CHANGES OR ASSIGNMENTS ARE PROHIBITED. COPYRIGHT © 2015

LIGHT FIXTURE SCHEDULE				
TYPE	MANUFACTURER	CATALOG NO.	WATTAGE	REMARKS
B	LSI	BESA LIGHT "LUCIA" GARNET (5 PENDANT FIXTURE) 6JC-169741-SN-LMPFL	GU-24	DECORATIVE GLASS PENDANT LIGHT. PENDANTS TO BE CENTERED OVER TABLES PER DECOR DRAWINGS. COORDINATE LOCATION AND QUANTITY WITH DECOR SUPPLIER. HEIGHTS VARY. LOWEST BOTTOM OF LIGHT: 6'-6" A.F.F. AT DINING TABLE 6'-8" A.F.F. AT SOFT SEATING
	SECURITY	BESA LIGHT "LUCIA" GARNET (5 PENDANT FIXTURE) 6JC-169741-SN-LMPFL	GU-24	
	CREE (RUUD)-HERMITAGE	BESA LIGHT "LUCIA" GARNET (5 PENDANT FIXTURE) 6JC-169741-SN-LMPFL	GU-24	
	CAL LIGHTING	BESA LIGHT "LUCIA" GARNET (5 PENDANT FIXTURE) PCS-1077-BS		CONTACT: ROBERT COOPER 1-800-321-6677 x-102
B1	LSI	BESA LIGHT "TAMBURRO" GARNET 704241-SN-LMPFL	GU-24	DECORATIVE GLASS WALL SCONCE. COORDINATE LOCATION AND QUANTITY WITH DECOR SUPPLIER. HEIGHTS LOWEST BOTTOM OF LIGHT: 6'-4" A.F.F.
	SECURITY	BESA LIGHT "TAMBURRO" GARNET 704241-SN-LMPFL	GU-24	
	CREE (RUUD)-HERMITAGE	BESA LIGHT "TAMBURRO" GARNET 704241-SN-LMPFL	GU-24	
B2	LSI	BESA LIGHT "LUCIA" GARNET (1 PENDANT FIXTURE) 1TT-169741-SN-LMPFL	GU-24	DECORATIVE GLASS SINGLE PENDANT LIGHT. PENDANTS TO BE CENTERED OVER TABLES PER DECOR DRAWINGS. COORDINATE LOCATION AND QUANTITY WITH DECOR SUPPLIER. HEIGHTS VARY. LOWEST BOTTOM OF LIGHT: 6'-6" A.F.F. AT DINING TABLE 6'-8" A.F.F. AT SOFT SEATING
	SECURITY	BESA LIGHT "LUCIA" GARNET (1 PENDANT FIXTURE) 1TT-169741-SN-LMPFL	GU-24	
	CREE (RUUD)-HERMITAGE	BESA LIGHT "LUCIA" GARNET (1 PENDANT FIXTURE) 1TT-169741-SN-LMPFL	GU-24	
B2	CAL LIGHTING	(SINGLE PENDANT FIXTURE) PC1-1077-10-BS		CONTACT: ROBERT COOPER 1-800-321-6677 x-102
	LSI	1JT-4124RM-SN-LAMP (RUBY) 1JT-4124WM-SN-LAMP (VANILLA)	50 XENON	DECORATIVE PENDANT LIGHT WITH STAINLESS RING ACCENT. PENDANTS TO BE CENTERED OVER TABLES PER DECOR DRAWINGS. COORDINATE LOCATION AND QUANTITY WITH DECOR SUPPLIER. BOTTOM OF LIGHT @ 6'-6" A.F.F.
	SECURITY	5F7681J4124RM / 5F141BK4RPS (RUBY) 5F7681J4124WM / 5F141BK4RPS (VANILLA)	26 CFL	
	CREE (RUUD)-HERMITAGE	*BES000003 w/ RS9042&	18 CFL	

C	LSI	FB38-MAB-LMPFL	26 CFL	6" DIAMETER SURFACE MOUNTED CYLINDER, BLACK. JUNCTION BOX (LOCATION VARIES W/ MANUFACTURER)
	SECURITY	5F141SLSP5741	26 CFL	STEM WOOD TRUSS "C" FIXTURE REQUIRED: MOUNT WITH BOTTOM OF FIXTURE FLUSH TO UNDERSIDE OF TRUSS.
	CREE (RUUD)-HERMITAGE	RS9035A-1B\$ w/ RS9035B-NF\$ w/ L-9121&	26 CFL	
D	LSI	SP7000A/7135BSBFL/BH27/LAMP-LMP2635	26 PLT	7" DIAMETER RECESSED DOWN LIGHT
	SECURITY	5F1687500N/5F1687532BL5	26 CFL	
E	CREE (RUUD)-HERMITAGE	RC6 W/ LR6-10L L76WH-DR	11 WATT LED	
	LSI	1TFA-2-32-SD-SS010-LM735-UE	(2)32 FL	1x4 RECESSED FLUORESCENT
F	SECURITY	R142BLW120/GFK14	(2)32 FL	
	CREE (RUUD)-HERMITAGE	*F14GT0011	(2)32 FL	
G	LSI	GA-432-SD-SS010-LM735-UE	(4)32 FL	2x4 RECESSED FLUORESCENT
	SECURITY	R244BLW120	(4)32 FL	
H	CREE (RUUD)-HERMITAGE	*J24RG0015	(4)32 FL	
	LSI	PGN18-432-FD-SS010-LM735-UE	(4)32 FL	2x4 RECESSED FLUORESCENT (DINING ROOM DROPPED CEILING OPTION)
I	SECURITY	RD4GSZAHB1E	(4)32 FL	ORDER BLACK TRIM WITH BLACK CEILING AND WHITE TRIM WITH HAZE CEILING.
	CREE (RUUD)-HERMITAGE	*J24PG3014	(4)32 FL	
J (OPTIONAL)	SECURITY	X1AFB132K1YFB01E	(1) 28 FL	MANUFACTURER: STONCO MODEL: XPRESSIVES SERIES 4" LINEAR FLUOR. DESCRIPTION: GOOSE NECK EXTERIOR FIXTURE MARKED FOR WET LOCATION ARM STYLE SL4 W/ACS3XX CABLE SUPPORT
	CREE (RUUD)-HERMITAGE	*BBC000716 W/(2)#BBC000717 W/*BBC000718	150 MH	
	SECURITY			

K	LSI	SCET-S-100-PSMY-PG-120-WHT (100W PSMH) CROSSOVER SERIES XSL2 5 LED 50 CW 120 WHT	100 MH	DROP DOWN METAL HALIDE FIXTURE
	SECURITY	UCL-853-100MH-S-WH-120/277 (100W PSMH) 851 SERIES 8851 DL 42 FP OW WH 120	100 MH	
	CREE (RUUD)-HERMITAGE	MRC0410-1A	100 MH	
L	LSI	HIWS-FTW-150-CMH-F-120-MSV	150 MH	SURFACE MOUNTED EXTERIOR WALL SCONCE NOTE: 1. FIXTURES ARE TO MATCH STOREFRONT FRAMES 2. LSI FIXTURE "L", COLOR SILVER, TO BE USED IN CANOPIES WHEN USING OPEN CANOPIES.
	SECURITY	RWSC-175MH-UD-PS-MT	175 MH	
	CREE (RUUD)-HERMITAGE	SE9141& (SILVER) OR SE9140& (BLACK) SE9139& (RED) SE5410-M (BRONZE)	100 MH	
M	LSI	EG3-2-32-SS10-WL-LM830-UE	(2)32 FL	WET LISTED 4'-0" FLUORESCENT UNDER CANOPY LIGHT ARE TO BE INSTALLED POINTING DOWN. G.C. TO PROVIDE AND INSTALL BRACKETS AS REQUIRED.
	SECURITY	5F141SLSLN42	(2)32 FL	
N	CREE (RUUD)-HERMITAGE	H514V2X32-U3	(2)32 FL	
	LSI	EG2-WB-150-PSMH-PG-MT-BLK	150 MH	WALL MOUNTED SECURITY LIGHT
EM	SECURITY	SWP-175MH-WH/PS	175 MH	
	CREE (RUUD)-HERMITAGE	MGW0615-M	175 MH	
EMX	LSI	LES 6 100 WH	(2) 7.2	EMERGENCY LIGHT
	SECURITY	PE 6	-	
EMX	CREE (RUUD)-HERMITAGE	EMP22WH	-	
	LSI	PRX-R-U-WB-WH-PR50-R12	(2) 5.4	EXIT/EMERGENCY LIGHT
EMX	SECURITY	14104567	-	
	CREE (RUUD)-HERMITAGE	EXPCRW	-	

NOTES:
 1. NOT ALL LIGHT FIXTURE TYPES SHOWN ON SCHEDULE MAY BE USED ON THIS PROJECT. REFER TO LIGHTING PLAN FOR PROJECT SPECIFIC TYPES AND QUANTITIES.
 2. PENDANT FIXTURES "B" MUST BE CENTERED OVER TABLE TOPS. COORDINATE WITH DECOR DRAWINGS.
 3. CONTRACTOR TO NOTIFY LIGHTING SUPPLIER OF THE FOLLOWING: FIXTURE TYPES "C" AND "D" WILL BE REQUIRED TO BE LENS AT THE LOCATIONS OVER THE SERVICE AREA AND OVER THE SELF-SERVE DRINK AREA. FIXTURE TYPE "G2" WILL REQUIRE A LENS OR TUBE GUARD AT THOSE LOCATIONS.

GENERAL NOTES

- A. ALL DIMENSIONS SHOWN ON REFLECTED CEILING PLAN ARE FROM FACE OF WALL FINISH UNLESS NOTED OTHERWISE.
- B. THE REFERENCE HEIGHTS INDICATED ON PLAN ARE FROM APPROXIMATE FINISH FLOOR (A.F.F.)
- C. GENERAL CONTRACTOR TO COORDINATE DINING ROOM LIGHTING WITH APPROVED INTERIOR DECOR PLANS.
- D. CONTRACTOR SHALL VERIFY FIXTURE QUANTITIES AND ALSO MAKE PROPER ADJUSTMENTS FOR ANY CHANGES IN PLAN DUE TO ADDITIONAL REQUIREMENTS, LOCAL CODES, ETC.
- E. CONTRACTOR TO COORDINATE PENDANT LIGHT LOCATIONS WITH DECOR SUPPLIER'S DRAWINGS.
- F. ALL FIXTURES SHALL BE LOCATED IN CENTER OF CEILING TILES UNLESS OTHERWISE NOTED.
- G. SEE THIS SHEET FOR LIGHTING LAYOUT REQUIREMENTS AND ADDITIONAL INFORMATION.
- H. FOR FINISH SPECIFICATIONS, REFER TO FINISH SCHEDULE ON A8.0 SHEET.

NOTE:
SEE THE INTERIOR DECOR DRAWINGS FOR INTERIOR FLOOR AND WALL FINISHES, FINISH SCHEDULE AND DETAILS.

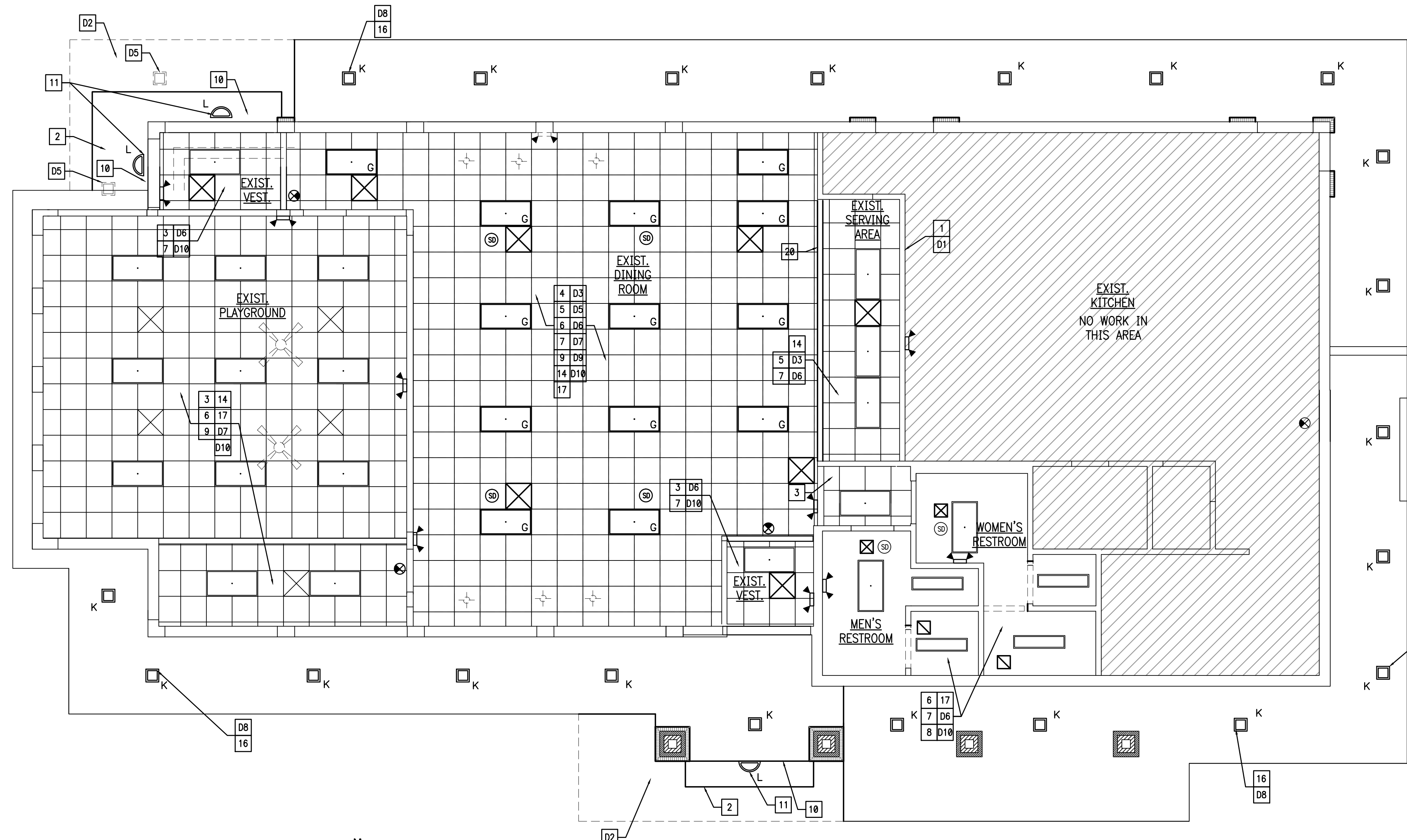
NOTE:
GRIDPOINT ENERGY MANAGEMENT SYSTEM IS IN THIS RESTAURANT. GIVE CAUTION TO SENSOR/THERMOSTATS.

LEGEND

SYMBOL	DESCRIPTION
	SUPPLY AIR DIFFUSERS
	RETURN AIR GRILLES
	EXHAUST FAN GRILLES
	CEILING GRID & TILE: 2'x2'
	CEILING GRID & TILE: 2'x4'
	NEW GYPSUM BD. CEILING

KEYED NOTES

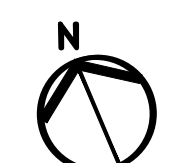
1. EXISTING MENU BOARD WALL. FINISH PER DECOR SCHEDULE. RE-INSTALL MENU BOARD WITH ANGLE BRACKET. -BY OWNER
2. PREFABRICATED METAL CANOPY TYPICAL. COORDINATE WITH CANOPY VENDOR FOR WALL BLOCKING REQUIREMENTS.
3. EXISTING SUSPENDED CEILING GRID TO REMAIN. REPAIR GRID AS REQUIRED, LEVEL, CLEAN. INSTALL NEW TILE, SEE NOTE 5.
4. INSTALL NEW 2X4 RECESSED FLUORESCENT LIGHTS. SEE LIGHTING SCHEDULE ON THIS SHEET.
**MID ALTERNATE RE-LENSE AND RE-LAMP AND CLEANING DINING ROOM LIGHT FIXTURES.
5. NEW SUSPENDED ACOUSTICAL CEILING TILE, USG 24 X 24 X 3/4 RADAR CLIMA PLUS CEILING PANEL, FL EDGE, COLOR WHITE.
6. REPLACE SPEAKERS AS REQUIRED. FINISH TO MATCH CEILING - INSTALL IN THE SAME LOCATION. - SUPPLIED AND INSTALLED BY OWNER.
7. NEW SUPPLY / RETURN DIFFUSERS (COLOR: WHITE) -FURNISHED AND INSTALLED BY OWNER.
8. RE-LENSE, RE-LAMP, AND CLEAN EXISTING LIGHT FIXTURES.
9. PENDANT LIGHTS TO BE CENTERED OVER TABLES. COORDINATE WITH DECOR DRAWINGS AND SEATING PLAN. -SUPPLIED BY OWNER INSTALLED BY GC.
10. NEW ILLUMINATED BUILDING SIGN. SEE EXTERIOR ELEVATIONS.
11. NEW UNDER CANOPY LIGHT FIXTURE TO BE LOCATED SO THAT LIGHT SOURCE IS NOT VISIBLE. -G.C. TO SUPPLY J-BOX AS INDICATED BY AWNING/CANOPY VENDOR. -CONNECT NEW LIGHTS TO EXISTING CIRCUITS. VERIFY IN FIELD. PROVIDED BY CANOPY MANUFACTURER.
12. NOT USED
13. NOT USED
14. SECURITY CAMERAS TO REMAIN. DO NOT REMOVE, DO NOT THROW OUT.
15. NOT USED
16. INSTALL SOFFIT LIGHTS, SEE LIGHTING SCHEDULE ON THIS SHEET.
17. INSTALL NEW EMERGENCY LIGHTING AND EXIT SIGNS. -SUPPLIED BY OWNER INSTALLED BY GC.
18. NOT USED
19. NOT USED
20. NEW SOFFIT OVER SERVICE COUNTER.
21. NOT USED



DEMOLITION KEYED NOTES

- D1. REMOVE EXISTING ELECTRONIC INTERIOR MENU BOARD AND STORE FOR RE-INSTALLATION ONCE THE REMODEL IS COMPLETED. -BY OWNER
- D2. REMOVE EXISTING ROOF AND PARAPET WHERE SHOWN. REFER TO ROOF PLAN AND SECTIONS FOR MORE INFORMATION ON THE EXTENT OF THE DEMOLITION. REMOVE SOFFIT LIGHTS AND RELATED WIRING BACK TO SOURCE, LOCATED IN THE ROOF THAT WILL BE DEMOLISHED.
- D3. REMOVE EXISTING CEILING TILES.
- D4. REMOVE EXISTING ROOF AND PARAPET WHERE SHOWN. REFER TO ROOF PLAN AND SECTIONS FOR MORE INFORMATION ON THE EXTENT OF THE DEMOLITION. REMOVE SOFFIT LIGHTS AND RELATED WIRING BACK TO SOURCE, LOCATED IN THE ROOF THAT WILL BE DEMOLISHED.
- D5. REMOVE EXISTING CEILING TILES.
- D6. REMOVE EXISTING DIFFUSERS, SEE PLAN FOR LOCATION OF NEW DIFFUSERS.
- D7. REMOVE EXISTING SPEAKERS, SEE PLAN FOR LOCATION OF NEW SPEAKERS. -BY OWNER
- D8. REMOVE EXISTING SOFFIT LIGHTS. LEAVE ELECTRICAL CONNECTIONS FOR USE WITH NEW LIGHT FIXTURES. SEE PLAN FOR LOCATION OF NEW SOFFIT LIGHT FIXTURE.
- D9. GC TO REMOVE EXISTING SECURITY CAMERAS, COORDINATE REINSTALLATION WITH OWNER.
- D10. REMOVE EXISTING EMERGENCY LIGHTING AND EXIT SIGNS, REPLACE ALL FIXTURES WITH NEW IN CURRENT LOCATION, UNLESS NOTED OTHERWISE. TO INCLUDE REAR DELIVERY DOOR SIGN.

REFLECTED CEILING PLAN
SCALE: 3/16" = 1'-0"



INTERPLAN
 ARCHITECTURE
 ENGINEERING
 INTERIOR DESIGN
 PROJECT MANAGEMENT

604 COURTLAND STREET
 SUITE 100
 ORLANDO, FLORIDA 32804
 PH 407.646.5008
 FX 407.629.9124

SEAL:

01.04.15 ISSUE FOR PERMIT
 01.04.15 ISSUE FOR BID
 NO DATE REMARKS

REVISIONS

RESTAURANT FOR:
TOMS King
 335 COMMERCE DRIVE
 CRYSTAL LAKE, IL 60014
 815-444-2008
BURGER KING CORPORATION

BURGER KING REMODEL
 BK10814
 5725 HEASLEY ROAD
 MENTOR, OH 44060

PROJECT NO: 2015.0348
 DATE: 01.04.15

A1.1
 CEILING PLAN

CHECKED: JN DRAWN: HP

INTERPLAN LLC. RESERVES COPYRIGHT & OTHER RIGHTS RESTRICTING THESE DOCUMENTS TO THE ORIGINAL USE OR PURPOSE FOR WHICH THEY WERE PREPARED. REPRODUCTIONS, COPIES OR ASSIGNMENTS ARE PROHIBITED.