

**DESIGN DRAWINGS - ISSUED FOR TENDER / NOT FOR CONSTRUCTION**  
 DRAWING IS FOR APPROVAL OF DESIGN AND SPECIFICATIONS ONLY. DESIGN IS SUBJECT TO CHANGE BASED ON VERIFICATION OF ARCHITECTURAL INFORMATION PROVIDED.  
 GENERAL CONTRACTOR TO VERIFY BUILDING DIMENSIONS BEFORE INSTALLATION OF ANY CHARTER HOUSE HOLDINGS, LLC PRODUCT CAN BEGIN.

**General Contractor Notes and Information**

**GENERAL CONSTRUCTION**

1. ALL WORK, CONSTRUCTION, AND MATERIALS SHALL COMPLY WITH ALL PROVISIONS OF THE UNIFORM BUILDING CODE AND WITH OTHER RULES, REGULATIONS, AND ORDINANCES GOVERNING THE PLACE OF CONSTRUCTION.

2. IT IS THE RESPONSIBILITY OF ALL PARTIES SUPPLYING LABOR OR MATERIAL OR BOTH TO BRING TO THE ATTENTION OF THE PROJECT MANAGER AND THE OWNER ANY DISCREPANCIES OR CONFLICT BETWEEN THE CODE REQUIREMENTS AND THESE PLANS.

3. THE APPLICABLE CODES SHALL INCLUDE, BUT SHALL NOT BE LIMITED TO THE UNIFORM BUILDING CODE, BOCA NATIONAL BUILDING CODE, UNIFORM PLUMBING CODE, UNIFORM ELECTRICAL CODE, UNIFORM MECHANICAL CODE, AND THE UNIFORM FIRE CODE.

4. GENERAL CONTRACTOR SHALL BE RESPONSIBLE FOR PROVIDING ALL WORK AND MATERIALS IN ACCORDANCE WITH ALL LOCAL AND / OR CITY BUILDING CODES.

5. GENERAL CONTRACTOR SHALL BE RESPONSIBLE FOR ACHIEVING TO TABLE TOP/BASE WITH DISABILITIES ACT GUIDELINES TO INCLUDE BUT NOT LIMITED TO ALL AMERICANS WITH DISABILITIES ACT GUIDELINES TO INCLUDE BUT NOT LIMITED TO TABLE TOP/BASE INSTALLATIONS, AIRLE WAY CLEARANCES, AND QUEUE LINE AREA CLEARANCES.

6. GENERAL CONTRACTOR SHALL BE RESPONSIBLE FOR OBTAINING ALL REQUIRED BUILDING PERMITS.

7. GENERAL CONTRACTOR SHALL BE RESPONSIBLE FOR COPYING AND DISTRIBUTING CHARTER-HOUSE PLANS AND DOCUMENTS TO ALL SUBCONTRACTORS INVOLVED.

**NEW AND REMODEL PROJECT**

1. WHETHER DIMENSIONS HAVE PRECEDENCE OVER SCALE IN ALL CASES, DO NOT SCALE OFF PLANS. FOR ADDITIONAL DIMENSIONS CALL THE PROJECT MANAGER (616) 399,6000

2. THESE PLANS ARE THE PROPERTY OF CHARTER HOUSE HOLDINGS, LLC. THESE PLANS MAY NOT BE REPRODUCED OR IMPLEMENTED IN ANY WAY, IN PART OR IN WHOLE, WITHOUT THE EXPRESS CONSENT OF CH!. UNAUTHORIZED USE WILL RESULT IN PAYMENT DUE FOR SERVICES RENDERED.

3. CH! REQUESTS VERIFICATION OF FIELD DIMENSIONS FROM THE GENERAL CONTRACTOR FOR THE FABRICATION OF COMMERCIAL FURNITURE, DECOR, CORE DRILL AND SPACE PLANS. WHEN FIELD DIMENSIONS CAN NOT BE ATTAINED, LATE SHIPMENTS MAY RESULT.

4. IF SPECIFIED ITEMS ARE NOT AVAILABLE, CONTACT YOUR PROJECT MANAGER AT CH!. THE GENERAL CONTRACTOR SHALL VERIFY ALL DIMENSIONS AND CONDITIONS AT THE JOB SITE AND NOTIFY CH! OF ALL DISCREPANCIES PRIOR TO COMMENCING WORK.

5. THE GENERAL CONTRACTOR TO PROVIDE A MINIMUM OF 40 LBS OF FLOOR TILE GROUT TO FINISH THE CORE DRILLED HOLES.

6. GENERAL CONTRACTOR WILL BE RESPONSIBLE FOR DISPOSAL OF ALL PACKAGING MATERIAL FROM SEATING AND DECOR PRODUCTS.

7. WALL COVERINGS AND CHAIR RAIL MUST RETURN INTO WINDOW.

8. GENERAL CONTRACTOR AND CHAIR RAIL MUST RETURN INTO WINDOW.

9. IF CHAIR RAIL HEIGHT IS 4" AFF OR LOWER, GENERAL CONTRACTOR WILL NEED TO OMIT CHAIR RAIL WHERE SETBACKS ARE LOCATED.

10. SOLID SURFACE SINK / VANITY SUPPLIED AND INSTALLED BY THE GENERAL CONTRACTOR.

11. G.C. TO POSITION THE MOST / VOLUME CONTROL / AND OTHER LIKE ITEMS TO NOT INTERFERE WITH THE CH! DECOR.

12. G.C. TO PROVIDE VERIFIED FIELD DIMENSIONS AS REQUESTED BY CH!

**ELECTRICAL, HVAC, AND CEILING NOTES**

1. G.C. TO SUPPLY AND CONNECT ELECTRICAL PIGTAIL AT ALL CODED LOCATIONS FOR CH! PRODUCT.

2. ALL ELECTRICAL FIXTURES, WIRING, AND INSTALLATIONS TO BE UL APPROVED.

3. ALL CEILING TILES AND GRID TO BE SUPPLIED AND INSTALLED BY THE AWARDED SUBCONTRACTOR. IN CASE OF REMODEL THE CEILING TILE AND GRID SHOULD BE REMOVED ONLY IF REQUESTED BY THE CUSTOMER.

4. LIGHTING FIXTURES AND/OR HVAC MAY NEED TO BE RELOCATED BY G.C. TO ACCOMMODATE DECOR AND ELECTRICAL OR HVAC PLACEMENT. (SEE REFLECTED CEILING PLAN FOR NEW CEILING FINISH REQUIREMENTS IF APPLICABLE)

5. GENERAL CONTRACTOR SHALL BE RESPONSIBLE FOR ACHIEVING TO TABLE TOP/BASE WITH DISABILITIES ACT GUIDELINES TO INCLUDE BUT NOT LIMITED TO ALL AMERICANS WITH DISABILITIES ACT GUIDELINES TO INCLUDE BUT NOT LIMITED TO TABLE TOP/BASE INSTALLATIONS, AIRLE WAY CLEARANCES, AND QUEUE LINE AREA CLEARANCES.

6. GENERAL CONTRACTOR SHALL BE RESPONSIBLE FOR OBTAINING ALL REQUIRED BUILDING PERMITS.

7. CH! WILL INCLUDE REFLECTED CEILING PLANS WHEN (1)-ADDITIONAL LIGHTING IS SPECIFIED IN DINING AREAS BEYOND THE EXISTING CONDITION OR BEYOND ARCHITECTURAL PLANS, (2)-CH! DECOR INTERFERES WITH CEILING ELEMENTS OR (3)-IF CEILING IS BEING REPLACED.

8. GENERAL CONTRACTOR TO CONTACT CONSTRUCTION ENGINEER TO VERIFY FINAL PLACEMENT OF HVAC.

9. PLEASE CONTACT YOUR CH! PROJECT MANAGER CONCERNING ANY CONFLICTS BETWEEN PLACEMENT OF CH! DECOR ELEMENTS.

10. GENERAL CONTRACTOR SHALL BE RESPONSIBLE FOR OBTAINING ALL REQUIRED BUILDING PERMITS.

11. A MINIMUM 5" CONCRETE SLAB IS REQUIRED FOR ALL CORE DRILLING.

12. ALL FLOOR AND COVE BASE TILE TO BE PROVIDED AND INSTALLED BY THE AWARDED SUBCONTRACTOR.

13. NEW FLOOR AND BASE TILE TO BE INSTALLED AND GROUTED 48 HOURS PRIOR TO CH! PRODUCT INSTALLATION. IF DAMAGE OCCURS DUE TO INSUFFICIENT CURING TIME REPAIRS WILL BE THE RESPONSIBILITY OF THE GENERAL CONTRACTOR.

14. CH! IS NOT RESPONSIBLE FOR DAMAGE OF ANY MECHANICAL LOCATED WITHIN 5' OF THE FINISHED FLOOR.

15. G.C. TO PROVIDE VERIFIED FIELD DIMENSIONS AS REQUESTED BY CH!

16. G.C. TO POSITION THE MOST / VOLUME CONTROL / AND OTHER LIKE ITEMS TO NOT INTERFERE WITH THE CH! DECOR.

17. G.C. TO PROVIDE VERIFIED FIELD DIMENSIONS AS REQUESTED BY CH!

**SITE CONDITIONS FOR CH! DECOR INSTALLATION**

1. IT IS IMPORTANT FOR THE FOLLOWING WORK TO BE COMPLETE PRIOR TO THE ARRIVAL OF CH! PRODUCT AND / OR INSTALL CREWS. THESE CONDITIONS ARE ESTABLISHED TO INSURE THAT PRODUCT IS INSTALLED MOST EFFICIENTLY WITHOUT DAMAGE TO PRODUCT (WAINSCOTTING), PAINT AND CHAIR RAIL.

2. ALL INTERIOR WALL FINISHES COMPLETE WITH: WALLCOVERING, MARBLE AND UNDER SAFE CONDITIONS.

3. FLOOR AND BASE TILE TO BE BETTERED AND GROUTED FOR A MINIMUM OF 48 HOURS PRIOR TO ARRIVAL.

4. GENERAL CONTRACTOR TO PROVIDE A MINIMUM OF 40 POUNDS FLOOR TILE GROUT TO FINISH THE CORE DRILLED HOLES.

5. ALL HVAC WORK TO BE COMPLETE.

6. CEILING TRACK AND TILE TO BE INSTALLED.

7. ALL WINDOWS TO BE INSTALLED IN BUILDING.

8. ELECTRICAL SERVICE TO 120V / 30 AMP CIRCUITS FOR CORE DRILLING.

9. PORTABLE WATER SUPPLY.

10. OPERATING LIGHTS (ADEQUATE FOR EVENING WORK)

11. CLEAN AND OPEN WORK AREA IN DINING ROOM.

12. WASTE DUMPSTER ON SITE.

13. FINISHED PARKING LOT OR SUBSPACE WITH 1" OF FINISHED GRADE.

14. UNENCUMBERED AND CONTINUOUS ACCESS TO THE BUILDING.

15. GENERAL CONTRACTOR RESPONSIBLE FOR TEMPORARY POWER IF ELECTRICAL SERVICE IS UNAVAILABLE.

16. GENERAL CONTRACTOR RESPONSIBLE FOR TEMPORARY POWER IF ELECTRICAL SERVICE IS UNAVAILABLE.

17. G.C. TO PROVIDE VERIFIED FIELD DIMENSIONS AS REQUESTED BY CH!

18. G.C. TO POSITION THE MOST / VOLUME CONTROL / AND OTHER LIKE ITEMS TO NOT INTERFERE WITH THE CH! DECOR.

19. G.C. TO PROVIDE VERIFIED FIELD DIMENSIONS AS REQUESTED BY CH!

20. G.C. TO POSITION THE MOST / VOLUME CONTROL / AND OTHER LIKE ITEMS TO NOT INTERFERE WITH THE CH! DECOR.

21. G.C. TO PROVIDE VERIFIED FIELD DIMENSIONS AS REQUESTED BY CH!

22. G.C. TO POSITION THE MOST / VOLUME CONTROL / AND OTHER LIKE ITEMS TO NOT INTERFERE WITH THE CH! DECOR.

23. G.C. TO PROVIDE VERIFIED FIELD DIMENSIONS AS REQUESTED BY CH!

24. G.C. TO POSITION THE MOST / VOLUME CONTROL / AND OTHER LIKE ITEMS TO NOT INTERFERE WITH THE CH! DECOR.

25. G.C. TO PROVIDE VERIFIED FIELD DIMENSIONS AS REQUESTED BY CH!

26. G.C. TO POSITION THE MOST / VOLUME CONTROL / AND OTHER LIKE ITEMS TO NOT INTERFERE WITH THE CH! DECOR.

27. G.C. TO PROVIDE VERIFIED FIELD DIMENSIONS AS REQUESTED BY CH!

28. G.C. TO POSITION THE MOST / VOLUME CONTROL / AND OTHER LIKE ITEMS TO NOT INTERFERE WITH THE CH! DECOR.

29. G.C. TO PROVIDE VERIFIED FIELD DIMENSIONS AS REQUESTED BY CH!

30. G.C. TO POSITION THE MOST / VOLUME CONTROL / AND OTHER LIKE ITEMS TO NOT INTERFERE WITH THE CH! DECOR.

31. G.C. TO PROVIDE VERIFIED FIELD DIMENSIONS AS REQUESTED BY CH!

32. G.C. TO POSITION THE MOST / VOLUME CONTROL / AND OTHER LIKE ITEMS TO NOT INTERFERE WITH THE CH! DECOR.

33. G.C. TO PROVIDE VERIFIED FIELD DIMENSIONS AS REQUESTED BY CH!

34. G.C. TO POSITION THE MOST / VOLUME CONTROL / AND OTHER LIKE ITEMS TO NOT INTERFERE WITH THE CH! DECOR.

35. G.C. TO PROVIDE VERIFIED FIELD DIMENSIONS AS REQUESTED BY CH!

36. G.C. TO POSITION THE MOST / VOLUME CONTROL / AND OTHER LIKE ITEMS TO NOT INTERFERE WITH THE CH! DECOR.

**Project Contents**

D1 TITLE PAGE | General Information & Project Contacts

D2 FLOOR PLAN | Furniture and Decor Locations

D3 REFLECTED CEILING PLAN | Soffit and Lighting Locations

D4 GENERAL CONTRACTOR PLAN | Building Dimensions

D5 FLOORING DETAILS | Installation Reference

D6 WALL FINISHES | Installation Reference

D7 CORE DRILL PLAN | Steel Locations (For sold projects ONLY)

D7a CORE DRILL PLAN | Steel Details (For sold projects ONLY)

D8 BUILDING ELEVATIONS A - C | Typical Finishes

D9 BUILDING ELEVATIONS D - H | Typical Finishes

D10 BUILDING ELEVATIONS # - # | Typical Finishes

D11 PRODUCT DETAILS | Seating & Decor

D12 PRODUCT DETAILS | Seating & Decor (cont'd)

D13a SPECIFICATIONS | Finish Legend

D13b SPECIFICATIONS | Finish Legend

D14 DETAIL DRAWINGS | Installation Reference (sold ONLY)

D15 GENERAL CONTRACTOR PLAN | Building Dimensions

D16 FLOORING DETAILS | Installation Reference

D17 WALL FINISHES | Installation Reference

D18 CORE DRILL PLAN | Steel Locations (For sold projects ONLY)

D18a CORE DRILL PLAN | Steel Details (For sold projects ONLY)

D19 BUILDING ELEVATIONS A - C | Typical Finishes

D20 BUILDING ELEVATIONS D - H | Typical Finishes

D21 BUILDING ELEVATIONS # - # | Typical Finishes

D22 PRODUCT DETAILS | Seating & Decor

D23 PRODUCT DETAILS | Seating & Decor (cont'd)

D23a SPECIFICATIONS | Finish Legend

D23b SPECIFICATIONS | Finish Legend

D24 DETAIL DRAWINGS | Installation Reference (sold ONLY)

D25 GENERAL CONTRACTOR PLAN | Building Dimensions

D26 FLOORING DETAILS | Installation Reference

D27 WALL FINISHES | Installation Reference

D28 CORE DRILL PLAN | Steel Locations (For sold projects ONLY)

D28a CORE DRILL PLAN | Steel Details (For sold projects ONLY)

D29 BUILDING ELEVATIONS A - C | Typical Finishes

D30 BUILDING ELEVATIONS D - H | Typical Finishes

D31 BUILDING ELEVATIONS # - # | Typical Finishes

D32 PRODUCT DETAILS | Seating & Decor

D33 PRODUCT DETAILS | Seating & Decor (cont'd)

D33a SPECIFICATIONS | Finish Legend

D33b SPECIFICATIONS | Finish Legend

D34 DETAIL DRAWINGS | Installation Reference (sold ONLY)

D35 GENERAL CONTRACTOR PLAN | Building Dimensions

D36 FLOORING DETAILS | Installation Reference

D37 WALL FINISHES | Installation Reference

D38 CORE DRILL PLAN | Steel Locations (For sold projects ONLY)

D38a CORE DRILL PLAN | Steel Details (For sold projects ONLY)

D39 BUILDING ELEVATIONS A - C | Typical Finishes

D40 BUILDING ELEVATIONS D - H | Typical Finishes

D41 BUILDING ELEVATIONS # - # | Typical Finishes

D42 PRODUCT DETAILS | Seating & Decor

D43 PRODUCT DETAILS | Seating & Decor (cont'd)

D43a SPECIFICATIONS | Finish Legend

D43b SPECIFICATIONS | Finish Legend

D44 DETAIL DRAWINGS | Installation Reference (sold ONLY)

D45 GENERAL CONTRACTOR PLAN | Building Dimensions

D46 FLOORING DETAILS | Installation Reference

D47 WALL FINISHES | Installation Reference

D48 CORE DRILL PLAN | Steel Locations (For sold projects ONLY)

D48a CORE DRILL PLAN | Steel Details (For sold projects ONLY)

D49 BUILDING ELEVATIONS A - C | Typical Finishes

D50 BUILDING ELEVATIONS D - H | Typical Finishes

D51 BUILDING ELEVATIONS # - # | Typical Finishes

D52 PRODUCT DETAILS | Seating & Decor

D53 PRODUCT DETAILS | Seating & Decor (cont'd)

D53a SPECIFICATIONS | Finish Legend

D53b SPECIFICATIONS | Finish Legend

D54 DETAIL DRAWINGS | Installation Reference (sold ONLY)

D55 GENERAL CONTRACTOR PLAN | Building Dimensions

D56 FLOORING DETAILS | Installation Reference

D57 WALL FINISHES | Installation Reference

D58 CORE DRILL PLAN | Steel Locations (For sold projects ONLY)

D58a CORE DRILL PLAN | Steel Details (For sold projects ONLY)

D59 BUILDING ELEVATIONS A - C | Typical Finishes

D60 BUILDING ELEVATIONS D - H | Typical Finishes

D61 BUILDING ELEVATIONS # - # | Typical Finishes

D62 PRODUCT DETAILS | Seating & Decor

D63 PRODUCT DETAILS | Seating & Decor (cont'd)

D63a SPECIFICATIONS | Finish Legend

D63b SPECIFICATIONS | Finish Legend

D64 DETAIL DRAWINGS | Installation Reference (sold ONLY)

D65 GENERAL CONTRACTOR PLAN | Building Dimensions

D66 FLOORING DETAILS | Installation Reference

D67 WALL FINISHES | Installation Reference

D68 CORE DRILL PLAN | Steel Locations (For sold projects ONLY)

D68a CORE DRILL PLAN | Steel Details (For sold projects ONLY)

D69 BUILDING ELEVATIONS A - C | Typical Finishes

D70 BUILDING ELEVATIONS D - H | Typical Finishes

D71 BUILDING ELEVATIONS # - # | Typical Finishes

D72 PRODUCT DETAILS | Seating & Decor

D73 PRODUCT DETAILS | Seating & Decor (cont'd)

D73a SPECIFICATIONS | Finish Legend

D73b SPECIFICATIONS | Finish Legend

D74 DETAIL DRAWINGS | Installation Reference (sold ONLY)

D75 GENERAL CONTRACTOR PLAN | Building Dimensions

D76 FLOORING DETAILS | Installation Reference

D77 WALL FINISHES | Installation Reference

D78 CORE DRILL PLAN | Steel Locations (For sold projects ONLY)

D78a CORE DRILL PLAN | Steel Details (For sold projects ONLY)

D79 BUILDING ELEVATIONS A - C | Typical Finishes

D80 BUILDING ELEVATIONS D - H | Typical Finishes

D81 BUILDING ELEVATIONS # - # | Typical Finishes

D82 PRODUCT DETAILS | Seating & Decor

D83 PRODUCT DETAILS | Seating & Decor (cont'd)

D83a SPECIFICATIONS | Finish Legend

D83b SPECIFICATIONS | Finish Legend

D84 DETAIL DRAWINGS | Installation Reference (sold ONLY)

D85 GENERAL CONTRACTOR PLAN | Building Dimensions

D86 FLOORING DETAILS | Installation Reference

D87 WALL FINISHES | Installation Reference

D88 CORE DRILL PLAN | Steel Locations (For sold projects ONLY)

D88a CORE DRILL PLAN | Steel Details (For sold projects ONLY)

D89 BUILDING ELEVATIONS A - C | Typical Finishes

D90 BUILDING ELEVATIONS D - H | Typical Finishes

D91 BUILDING ELEVATIONS # - # | Typical Finishes

D92 PRODUCT DETAILS | Seating & Decor

D93 PRODUCT DETAILS | Seating & Decor (cont'd)

D93a SPECIFICATIONS | Finish Legend

D93b SPECIFICATIONS | Finish Legend

D94 DETAIL DRAWINGS | Installation Reference (sold ONLY)

D95 GENERAL CONTRACTOR PLAN | Building Dimensions

D96 FLOORING DETAILS | Installation Reference

D97 WALL FINISHES | Installation Reference

D98 CORE DRILL PLAN | Steel Locations (For sold projects ONLY)

D98a CORE DRILL PLAN | Steel Details (For sold projects ONLY)

D99 BUILDING ELEVATIONS A - C | Typical Finishes

D100 BUILDING ELEVATIONS D - H | Typical Finishes

D101 BUILDING ELEVATIONS # - # | Typical Finishes

D102 PRODUCT DETAILS | Seating & Decor

D103 PRODUCT DETAILS | Seating & Decor (cont'd)

D103a SPECIFICATIONS | Finish Legend

D103b SPECIFICATIONS | Finish Legend

D104 DETAIL DRAWINGS | Installation Reference (sold ONLY)

D105 GENERAL CONTRACTOR PLAN | Building Dimensions

D106 FLOORING DETAILS | Installation Reference

D107 WALL FINISHES | Installation Reference

D108 CORE DRILL PLAN | Steel Locations (For sold projects ONLY)

D108a CORE DRILL PLAN | Steel Details (For sold projects ONLY)

D109 BUILDING ELEVATIONS A - C | Typical Finishes

D110 BUILDING ELEVATIONS D - H | Typical Finishes

D111 BUILDING ELEVATIONS # - # | Typical Finishes

D112 PRODUCT DETAILS | Seating & Decor









CHARTER HOUSE HOLDINGS, LLC  
 200 North Franklin Street  
 Zeeland, MI 49464  
 www.gotochi.com  
 Tel: 616.399.6000 Fax: 616.399.8396

**Important Notes**

1. WRITTEN DIMENSIONS HAVE PRECEDENCE OVER SCALE IN ALL CASES.
2. THE GENERAL CONTRACTOR MUST VERIFY ALL BUILDING DIMENSIONS, EQUIPMENT, FURNITURE PLACEMENT, UTILITY LOCATIONS, AND CONDITIONS AT THE JOB SITE.
3. THE GENERAL CONTRACTOR MUST NOTIFY CHI OF ALL DISCREPANCIES AND/OR REQUIRED ADJUSTMENTS PRIOR TO STARTING WORK.
4. **DO NOT SCALE OFF PLANS**  
 CALL YOUR CHI PROJECT MANAGER TO VERIFY ANY QUESTIONABLE DIMENSIONS (616) 399-6000
5. ALL DIMENSIONS ARE FOR DESIGN INTENT ONLY.
6. CHI HAS PREPARED THESE DOCUMENTS AS ACCURATELY AS POSSIBLE WITH THE ARCHITECTURAL INFORMATION PROVIDED. DUE TO LACK OF ACCURATE AND COMPLETE DIMENSIONS AND/OR ARCHITECTURAL PLANS, OWNER UNDERSTANDS THAT ADJUSTMENTS TO THE FINAL LOCATIONS OF EQUIPMENT AND/OR FURNITURE PLACEMENT MAY BE REQUIRED AT THE OWNER'S EXPENSE DUE TO DISCREPANCIES BASED ON ACTUAL JOB SITE DIMENSIONS AND CONDITIONS.
7. REFER TO ARCHITECTURAL OR ENGINEER DRAWINGS FOR COMPLETE AND ACCURATE DIMENSIONS OF BUILDING STRUCTURE.
8. THESE CONTRACT DOCUMENTS AND THE INFORMATION THEY CONTAIN ARE THE PROPERTY OF CHI.
9. ALL CONTRACT DOCUMENTS MAY NOT BE COPIED, REPRODUCED, USED OR IMPLEMENTED IN ANY WAY, IN PART OR IN WHOLE, WITHOUT THE EXPRESS WRITTEN CONSENT OF CHI.
10. ANY UNAUTHORIZED USE OF THESE PLANS WILL RESULT IN PAYMENT DUE FOR SERVICES RENDERED BY CHI.
11. ANY DEVIATIONS FROM THESE DRAWINGS FOR ANY REASON SHALL NOT BE DONE WITHOUT CONSENT OF CHI IN ADVANCE. IN WRITING, CHI IS NOT RESPONSIBLE FOR DEVIATIONS, CHANGES, ADDITIONS, OR DELETIONS NOT REVIEWED AND APPROVED IN ADVANCE BY CHI.
12. THESE DOCUMENTS REFLECT EQUIPMENT ORDERED OF DATE SHOWN BELOW.



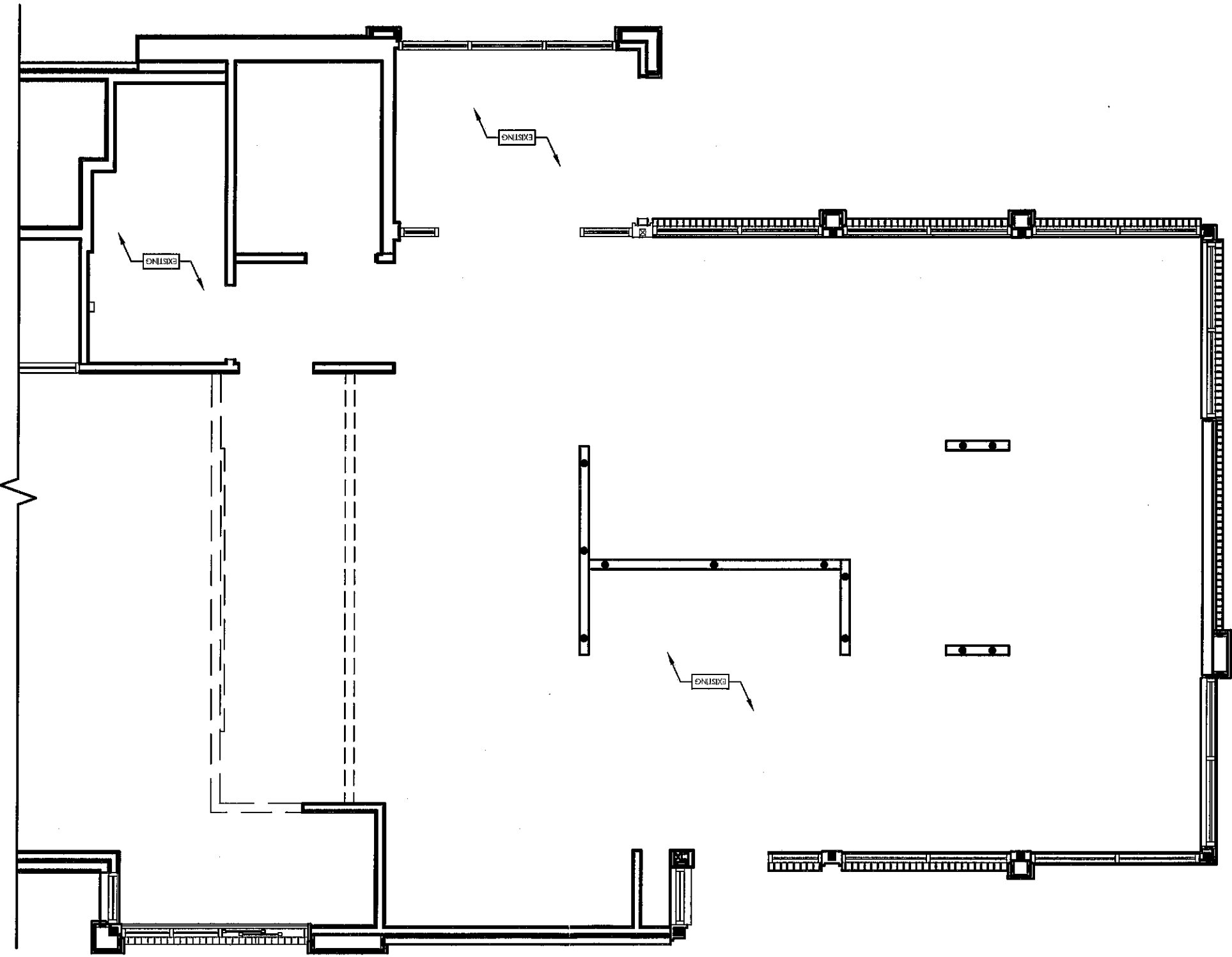
PROJECT: Burger King

LOCATION: MELVINDALE, MI  
 ADDRESS: 18250 ALLEN RD.  
 MATL. STORE #: 3996  
 BLDG. SHEET: ART  
 FDD SET: ISSUED FOR TENDER

SALES MGR: KEITH LEBERT  
 PROJECT MGR: SCOTT SIMPSON  
 SET ISSUED DATE: 17 NOVEMBER 2014  
 DRAWING TITLE: FLOORING DETAILS  
 CH PROJECT: 3996  
 SCALE: 3/16" = 1'-0"  
 DRAWING: D5 of D14

**FLOOR FINISHES**

12-1-14  
 MR  
 VLR



NOTE: SEE SPECIFICATIONS PAGE

	ELEVATION TAG
	DECOR TAG
	MATERIAL TAG
	KEY
	DIVIDER WALL
	LOW WALL
	FULL HT. WALL
	DEMO WALLS
	MISC. BY G.C.
	KNEEWALL / BEAM / MULTIRUSE



CHARTER HOUSE HOLDINGS, LLC  
 200 North Franklin Street  
 Zeeland, MI 49464  
 www.goToCHI.com  
 Tel: 616.399.6000 Fax: 616.399.8396

**Important Notes**

1. WRITTEN DIMENSIONS HAVE PRECEDENCE OVER SCALE IN ALL CASES.
2. THE GENERAL CONTRACTOR MUST VERIFY ALL BUILDING DIMENSIONS, EQUIPMENT, FURNITURE PLACEMENT, UTILITY LOCATIONS, AND CONDITIONS AT THE JOB SITE.
3. THE GENERAL CONTRACTOR MUST NOTIFY CHI OF ALL DISCREPANCIES AND/OR REQUIRED ADJUSTMENTS PRIOR TO STARTING WORK.
4. **DO NOT SCALE OFF PLANS**  
 CALL YOUR CHI PROJECT MANAGER TO VERIFY ANY QUESTIONABLE DIMENSIONS (419) 399-6000.
5. ALL DIMENSIONS ARE FOR DESIGN INTENT ONLY.
6. CHI HAS PREPARED THESE DOCUMENTS AS ACCURATELY AS POSSIBLE WITH THE ARCHITECTURAL INFORMATION PROVIDED. DUE TO LACK OF ACCURATE AND COMPLETE DIMENSIONS AND ARCHITECTURAL PLANS, OWNER UNDERSTANDS THAT ADJUSTMENTS TO THE FINAL LOCATIONS OF EQUIPMENT AND/OR FURNITURE PLACEMENT MAY BE REQUIRED AT THE OWNER'S EXPENSE DUE TO DISCREPANCIES ASSON ACTUAL JOB SITE DIMENSIONS AND CONDITIONS.
7. REFER TO ARCHITECTURAL OR ENGINEER DRAWINGS FOR COMPLETE AND ACCURATE DIMENSIONS OF BUILDING STRUCTURE.
8. THESE CONTRACT DOCUMENTS AND THE INFORMATION THEY CONTAIN ARE THE PROPERTY OF CHI.
9. ALL CONTRACT DOCUMENTS MAY NOT BE COPIED, REPRODUCED, USED OR IMPLEMENTED IN ANY WAY, IN PART OR IN WHOLE, WITHOUT THE EXPRESS WRITTEN CONSENT OF CHI.
10. ANY UNAUTHORIZED USE OF THESE PLANS WILL RESULT IN PAYMENT DUE FOR SERVICES RENDERED BY CHI.
11. ANY DEVIATIONS FROM THESE DRAWINGS FOR ANY REASON SHALL NOT BE DONE WITHOUT CONSENT OF CHI IN ADVANCE. CHI IS NOT RESPONSIBLE FOR DEVIATIONS, CHANGES, ADDITIONS, OR DELETIONS NOT REVIEWED AND APPROVED IN ADVANCE BY CHI.
12. THESE DOCUMENTS REFLECT EQUIPMENT ORDERED OF DATE SHOWN BELOW.

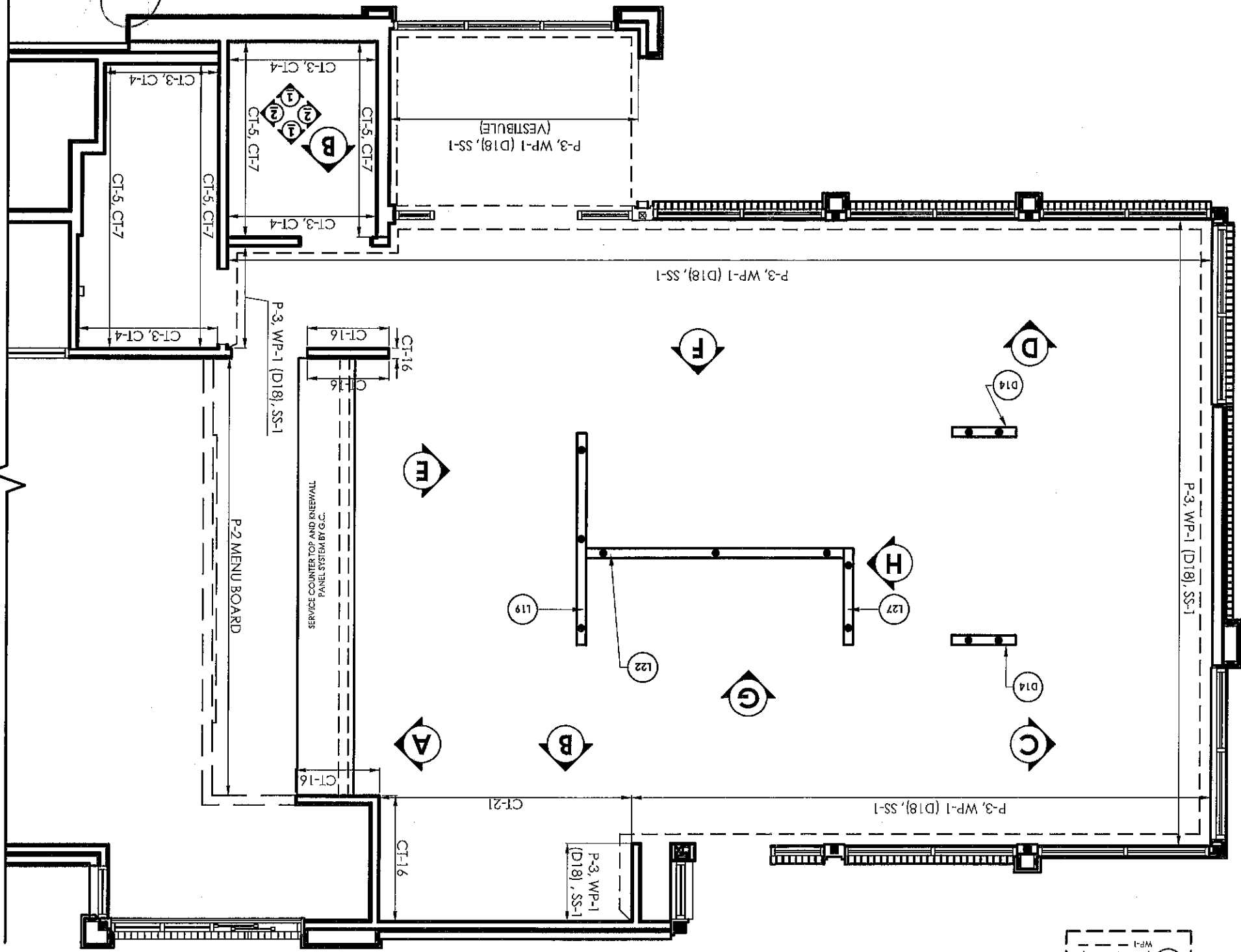


PROJECT: Burger King  
 LOCATION: METVINDALE, MI  
 ADDRESS: 18250 ALLEN RD.  
 NAT'L STORE #: 3996  
 DESIGN: ART: ISSUED FOR TENDER  
 PROJECT MGR: SCOTT SIMPSON  
 SALES MGR: KETH LEBERT

SET ISSUED DATE: 17 NOVEMBER 2014  
 DRAWING TITLE: WALL FINISHES  
 CH PROJECT: 3996  
 SCALE: 3/16" = 1'-0"  
 DRAWING: D6 OF D14

NOTE: SEE SPECIFICATIONS PAGE

12-1-14  
 VLP  
 M



**IMPORTANT NOTE!**  
 CONFIRM ALL SPECIFIED MATERIALS / FINISHES AND THEIR PLACEMENT PER LOCAL HEALTH CODE REQUIREMENTS PRIOR TO CONSTRUCTION.

ELEVATION TAG	DECOR TAG	MATERIAL TAG	WALL	DIVIDER WALL	LOW WALL	FULL HT. WALL	DEMO WALLS	MISC. BY G.C. MULTIPURPOSE	KEY	WALL FINISH	G.C. WALL FINISHES	WALL GRAPHICS
---------------	-----------	--------------	------	--------------	----------	---------------	------------	----------------------------	-----	-------------	--------------------	---------------



CHARTER HOUSE HOLDINGS, LLC  
200 North Franklin Street  
Zeeland, MI 49464

www.gotochi.com  
Tel: 616.399.6000 Fax: 616.399.8396

This drawing contains proprietary information by CHI. Unauthorized use or reproduction is prohibited without expressed written consent of CHI.

**Important Notes**

1. WRITTEN DIMENSIONS HAVE PRECEDENCE OVER SCALE IN ALL CASES.
2. THE GENERAL CONTRACTOR MUST VERIFY ALL BUILDING DIMENSIONS, EQUIPMENT, FURNITURE PLACEMENT, UTILITY LOCATIONS, AND CONDITIONS AT THE JOB SITE.
3. THE GENERAL CONTRACTOR MUST NOTIFY CH OF ALL DISCREPANCIES AND/OR REQUIRED ADJUSTMENTS PRIOR TO STARTING WORK.
4. **DO NOT SCALE ON PLANS**  
CALL YOUR CH PROJECT MANAGER TO VERIFY ANY QUESTIONABLE DIMENSIONS (616) 399-6000
5. ALL DIMENSIONS ARE FOR DESIGN INTENT ONLY.
6. CH HAS PREPARED THESE DOCUMENTS AS ACCURATELY AS POSSIBLE WITH THE ARCHITECTURAL INFORMATION PROVIDED. DUE TO LACK OF ACCURATE AND COMPLETE DIMENSIONS ARCHITECTURAL PLANS, OWNER UNDERSTANDS THAT ADJUSTMENTS TO THE FINAL LOCATIONS OF EQUIPMENT AND/OR FURNITURE PLACEMENT MAY BE REQUIRED AT THE OWNER'S EXPENSE DUE TO DISCREPANCIES BASED ON ACTUAL JOB SITE DIMENSIONS AND CONDITIONS.
7. REFER TO ARCHITECTURAL OR ENGINEER DRAWINGS FOR COMPLETE AND ACCURATE DIMENSIONS OF BUILDING STRUCTURE.
8. THESE CONTRACT DOCUMENTS AND THE INFORMATION THEY CONTAIN ARE THE PROPERTY OF CHI.
9. ALL CONTRACT DOCUMENTS MAY NOT BE COMBINED, REPRODUCED, USED OR IMPROVED IN ANY WAY, IN PART OR IN WHOLE, WITHOUT THE EXPRESS WRITTEN CONSENT OF CHI.
10. ANY UNAUTHORIZED USE OF THESE PLANS WILL RESULT IN PAYMENT DUE FOR SERVICES RENDERED BY CHI.
11. ANY DEVIATIONS FROM THESE DRAWINGS FOR ANY REASON SHALL NOT BE DONE WITHOUT CONSENT OF CH IN ADVANCE. CH IS NOT RESPONSIBLE FOR DEVIATIONS, CHANGES, ADDITIONS, OR DELETIONS NOT REVIEWED AND APPROVED IN ADVANCE BY CHI.
12. THESE DOCUMENTS REFLECT EQUIPMENT ORDERED OF DATE SHOWN BELOW.



**Project:** Burger King

**Location:** MELVINDALE, MI

**Address:** 18250 ALLEN RD.

**MAPL STORE #:** 3996

**BLDG. SHELL:** ART

**DESIGN:** ART

**PROJECT MGR:** SCOTT SIMPSON

**SALES MGR:** KEITH LEBERT

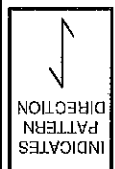
**SET ISSUED DATE:** 17 NOVEMBER 2014

**DRAWING TITLE:** ELEVATIONS

**CH PROJECT:** 3996

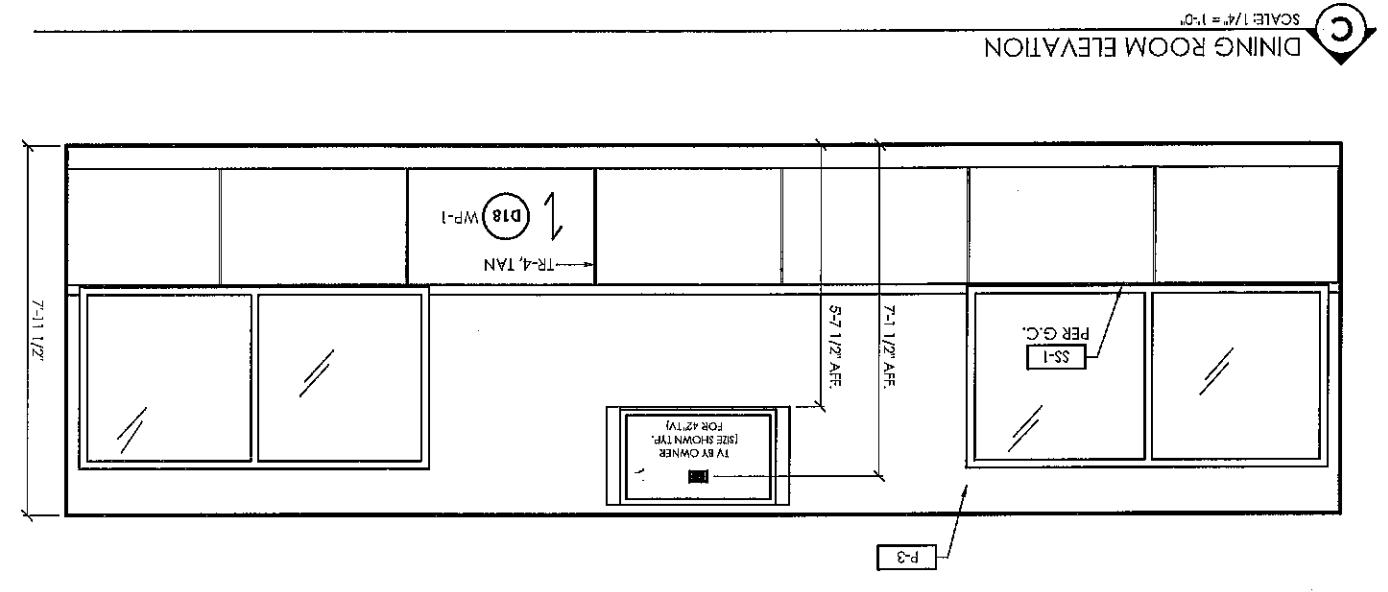
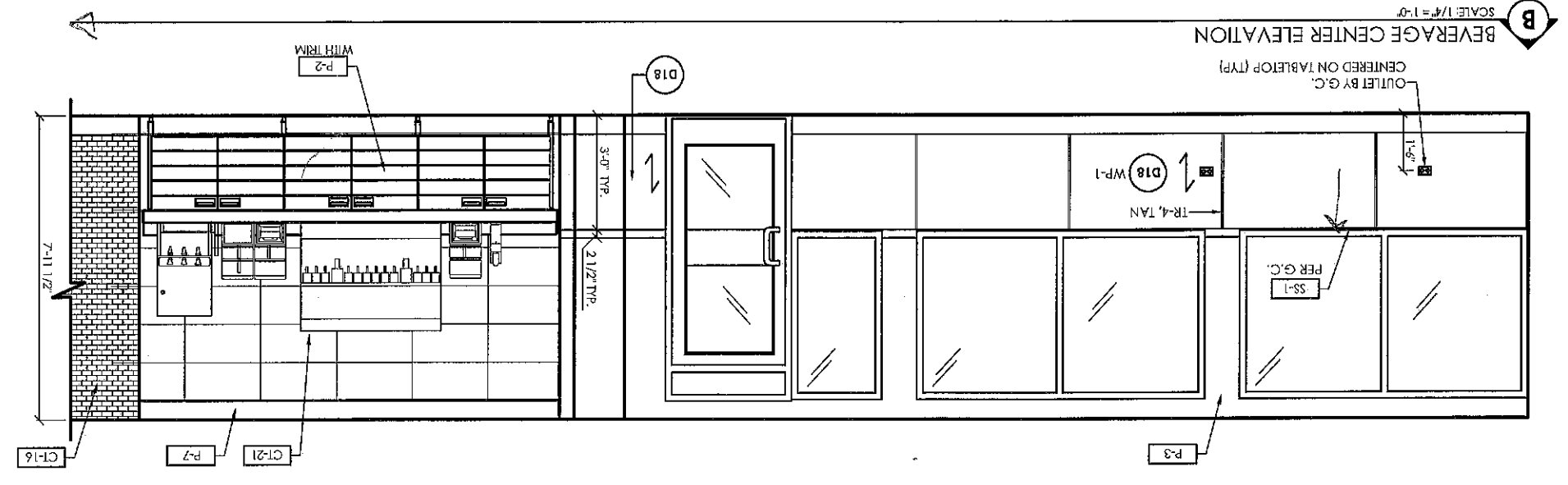
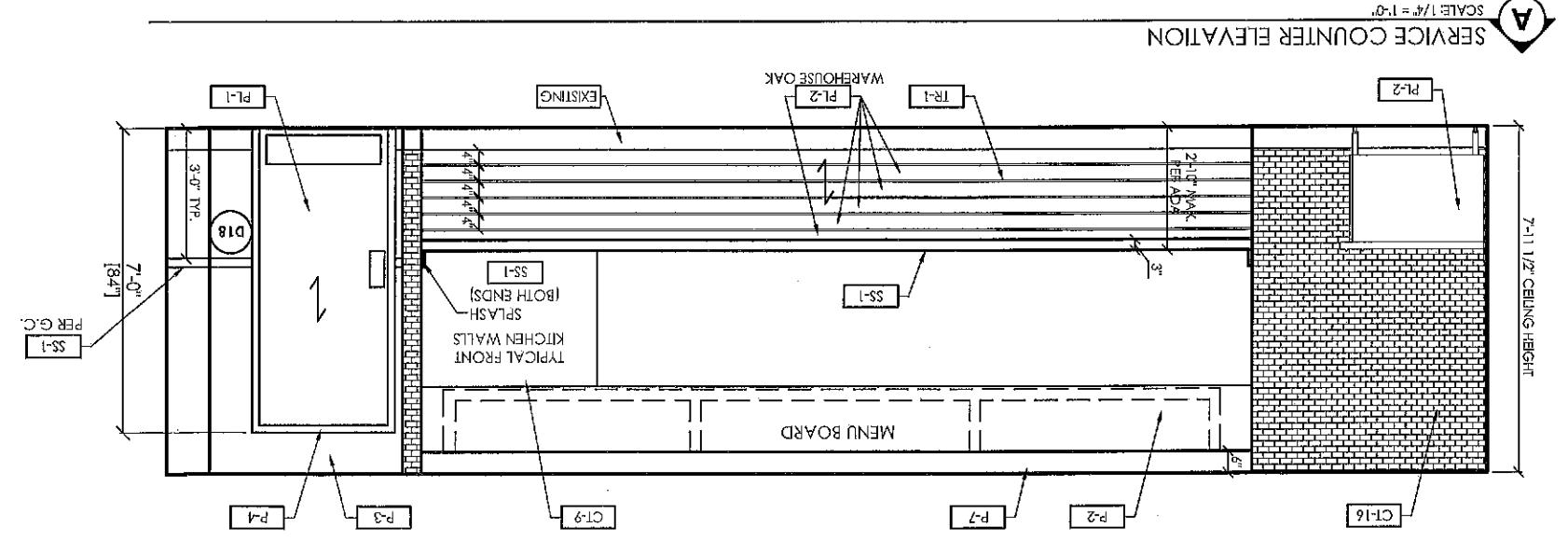
**SCALE:** 1/4" = 1'-0"

**DRAWING:** D8 of D14



NOTE: SEE SPECIFICATIONS PAGE

FLOOR PLAN KEY	
	ELEVATION TAG
	DECOR TAG
	MATERIAL TAG
	FINISH TAG
	GRAPHICS TAG

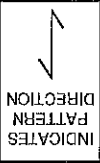


*12-1-14*  
*UKB*  
*[Signature]*

**ISSUED FOR TENDER**

	<b>ELEVATION KEY</b>
	ELEVATION TAG CHI DECORTAG
	G.C. MATERIAL TAG CHI MATERIALTAG
	F-#
	G-#

NOTE: SEE SPECIFICATIONS PAGE



CHARTER HOUSE HOLDINGS, LLC  
200 North Franklin Street  
Zeeland, MI 49464  
www.gotochi.com  
Tel: 616.399.6000 Fax: 616.399.8396

This drawing contains proprietary information by CHI. Unauthorised use or reproduction is prohibited without expressed written consent of CHI.

**Important Notes**

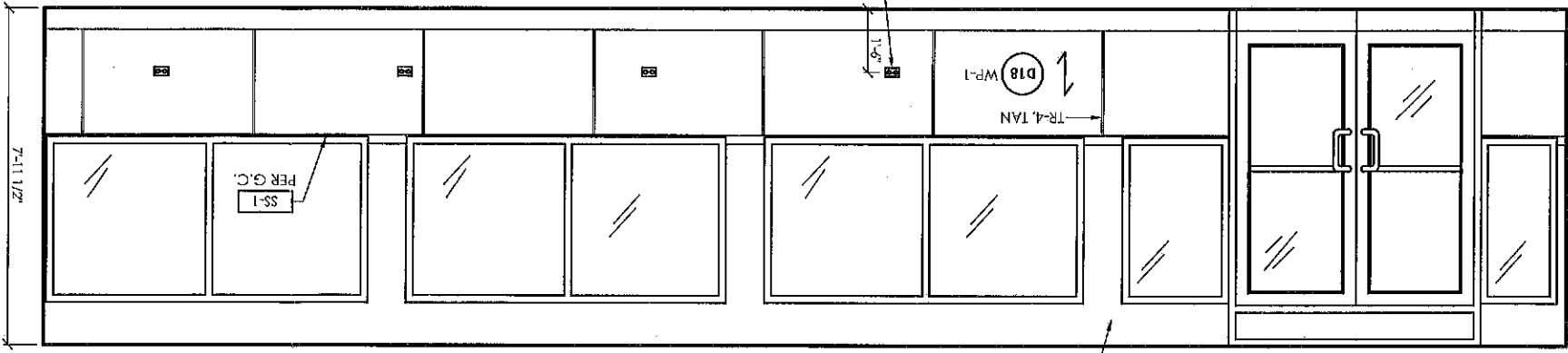
1. WRITTEN DIMENSIONS HAVE PRECEDENCE OVER SCALE IN ALL CASES.
2. THE GENERAL CONTRACTOR MUST VERIFY ALL BUILDING DIMENSIONS, EQUIPMENT, FURNITURE PLACEMENT, UTILITY LOCATIONS, AND CONDITIONS AT THE JOB SITE.
3. THE GENERAL CONTRACTOR MUST NOTIFY CHI OF ALL DISCREPANCIES AND/OR REQUIRED ADJUSTMENTS PRIOR TO STARTING WORK.
4. **DO NOT SCALE OFF PLANS**  
CALL YOUR CHI PROJECT MANAGER TO VERIFY ANY QUESTIONABLE DIMENSIONS (616) 399-6000
5. ALL DIMENSIONS ARE FOR DESIGN INTENT ONLY.
6. CHI HAS PREPARED THESE DOCUMENTS AS ACCURATELY AS POSSIBLE WITH THE ARCHITECTURAL INFORMATION PROVIDED. DUE TO LACK OF ACCURATE AND COMPLETE DIMENSIONS ARCHITECTURAL PLANS, OWNER UNDERSTANDS THAT ADJUSTMENTS TO THE FINAL LOCATIONS OF EQUIPMENT AND/OR FURNITURE PLACEMENT MAY BE REQUIRED AT THE OWNER'S DISCRETION DUE TO DISCREPANCIES BASED ON ACTUAL JOB SITE DIMENSIONS AND CONDITIONS.
7. REFER TO ARCHITECTURAL OR ENGINEER DRAWINGS FOR COMPLETE AND ACCURATE DIMENSIONS OF BUILDING STRUCTURE.
8. THESE CONTRACT DOCUMENTS AND THE INFORMATION THEY CONTAIN ARE THE PROPERTY OF CHI.
9. ALL CONTRACT DOCUMENTS MAY NOT BE COPIED, REPRODUCED, USED OR IMPLICATED IN ANY WAY, IN PART OR IN WHOLE, WITHOUT THE EXPRESS WRITTEN CONSENT OF CHI.
10. ANY UNAUTHORIZED USE OF THESE PLANS WILL RESULT IN PAYMENT DUE FOR SERVICES RENDERED BY CHI.
11. ANY DEVIATIONS FROM THESE DRAWINGS FOR ANY REASON SHALL NOT BE DONE WITHOUT CONSENT OF CHI.
12. THESE DOCUMENTS REFLECT EQUIPMENT ORDERED OF DATE SHOWN BELOW.

**Burger King**

PROJECT: 18250 ALLEN RD., METWINDALE, MI  
MATERIAL STORE #: 3996  
BLDG. SHEET: ART  
FDD. SER.:  
PROJECT MGR.: SCOTT SIMPSON  
SALES MGR.: KATHI LEBERT  
SET ISSUED DATE: 17 NOVEMBER 2014  
DRAWING TITLE: ELEVATIONS  
CHI PROJECT: 3996  
SCALE: 1/4" = 1'-0"

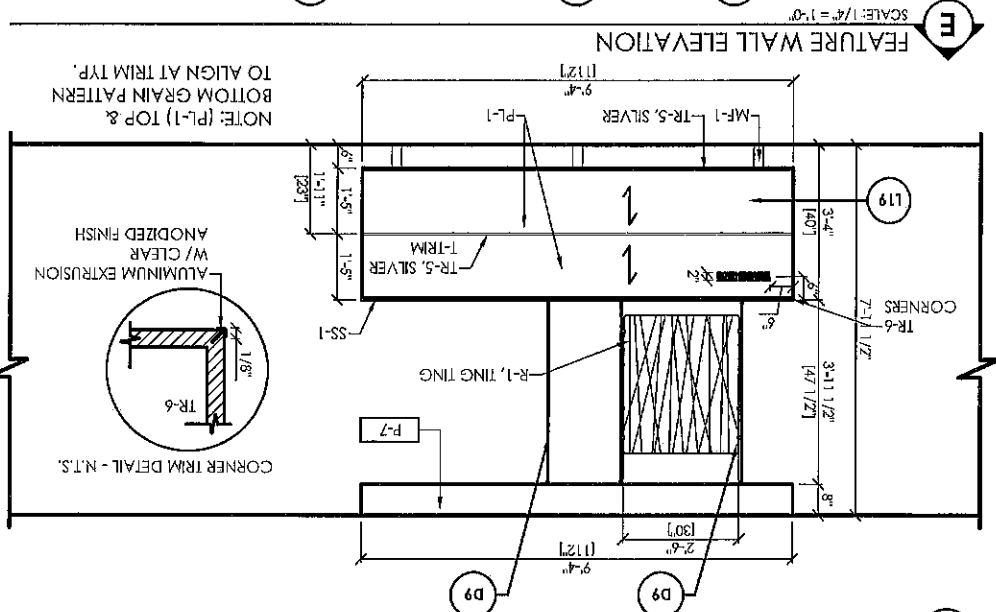


D9 of D14



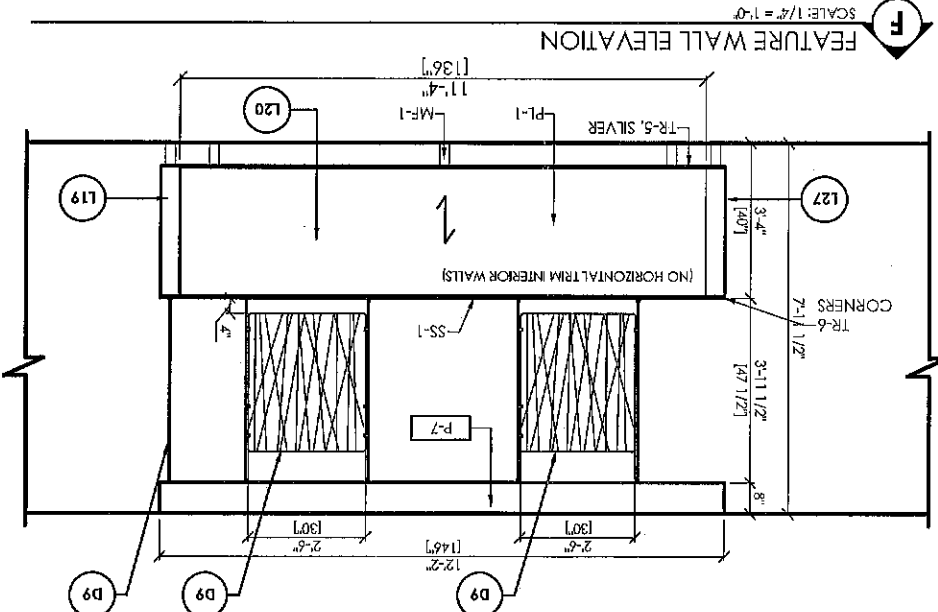
OUTLET BY G.C. CENTERED ON TABLETOP (TYP)

**D** DINING ROOM ELEVATION  
SCALE: 1/4" = 1'-0"

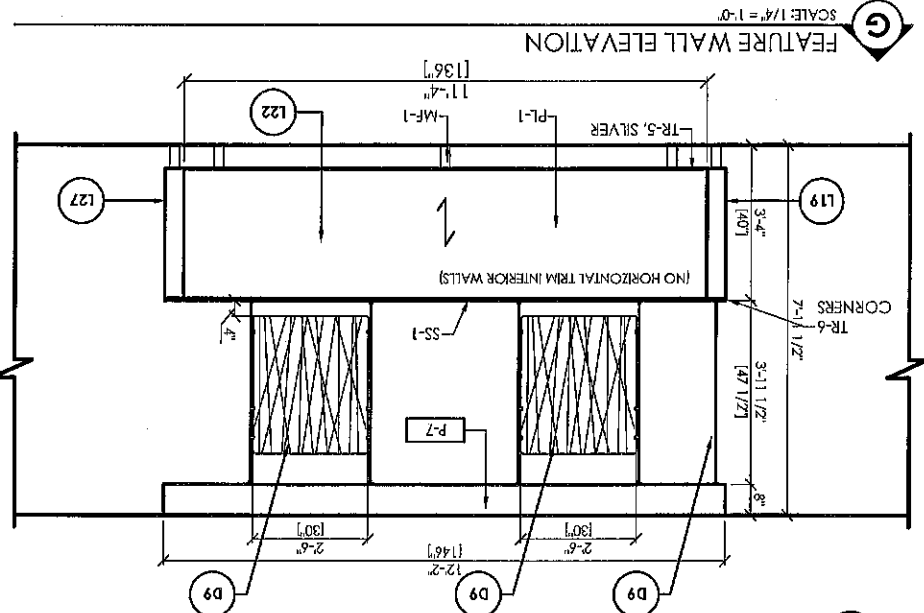


CORNER TRIM DETAIL - N.T.S.  
ALUMINUM EXTRUSION W/ CLEAR ANODIZED FINISH

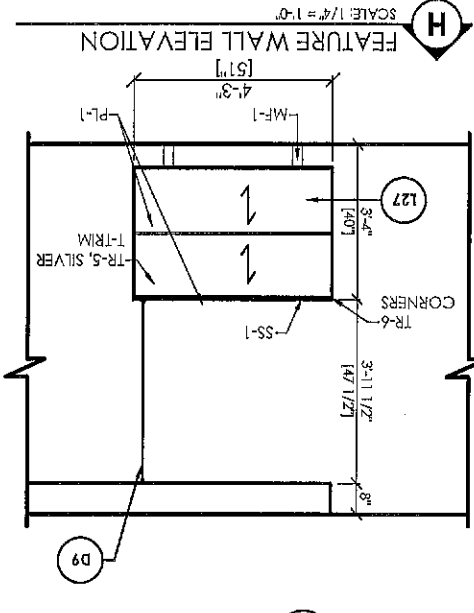
**E** FEATURE WALL ELEVATION  
SCALE: 1/4" = 1'-0"



**F** FEATURE WALL ELEVATION  
SCALE: 1/4" = 1'-0"



**G** FEATURE WALL ELEVATION  
SCALE: 1/4" = 1'-0"



**H** FEATURE WALL ELEVATION  
SCALE: 1/4" = 1'-0"

12-114  
M  
C/O



PROJECT: Burger King  
 LOCATION: MELVINDALE, MI  
 ADDRESS: 18250 ALLEN RD.  
 NATL. STORE #: 3996  
 BLDG. SHEET: ART  
 FDD. SET: ISSUED FOR TENDER  
 PROJECT MGR: SCOTT SIMPSON  
 SALES MGR: KETH LEBERT  
 SET ISSUED DATE: 17 NOVEMBER 2014  
 DRAWING TITLE: PRODUCT DETAILS  
 SCALE: N.T.S.  
 D11 of D14



**Important Notes**

1. WRITTEN DIMENSIONS HAVE PRECEDENCE OVER SCALE IN ALL CASES.
2. THE GENERAL CONTRACTOR MUST VERIFY ALL BUILDING DIMENSIONS, EQUIPMENT, FURNITURE PLACEMENT, UTILITY LOCATIONS, AND CONDITIONS AT THE JOB SITE.
3. THE GENERAL CONTRACTOR MUST NOTIFY CHI OF ALL DISCREPANCIES AND/OR REQUIRED ADJUSTMENTS PRIOR TO STARTING WORK.
4. **DO NOT SCALE OFF PLANS**  
 CALL YOUR CHI PROJECT MANAGER TO VERIFY ANY QUESTIONABLE DIMENSIONS (714) 399-6000
5. ALL DIMENSIONS ARE FOR DESIGN INTENT ONLY.
6. CHI HAS PREPARED THESE DOCUMENTS AS ACCURATELY AS POSSIBLE WITH THE ARCHITECTURAL INFORMATION PROVIDED. DUE TO LACK OF ACCURATE AND COMPLETE DIMENSIONS THAT ADJUSTMENTS TO THE FINAL LOCATIONS OF EQUIPMENT AND/OR FURNITURE PLACEMENT MAY BE REQUIRED AT THE OWNER'S DISCRETION DUE TO DISCREPANCIES BASED ON ACTUAL JOB SITE DIMENSIONS AND CONDITIONS.
7. REFER TO ARCHITECTURAL OR ENGINEER DRAWINGS FOR COMPLETE AND ACCURATE DIMENSIONS OF BUILDING STRUCTURE.
8. THESE CONTRACT DOCUMENTS AND THE INFORMATION THEY CONTAIN ARE THE PROPERTY OF CHI.
9. ALL CONTRACT DOCUMENTS MAY NOT BE COPIED, REPRODUCED, USED OR IMPERATED IN ANY WAY, IN PART OR IN WHOLE, WITHOUT THE EXPRESS WRITTEN CONSENT OF CHI.
10. ANY UNAUTHORIZED USE OF THESE PLANS WILL RESULT IN PAYMENT DUE FOR SERVICES RENDERED BY CHI.
11. ANY DEVIATIONS FROM THESE DRAWINGS FOR ANY REASON SHALL NOT BE DONE WITHOUT CONSENT OF CHI.
12. THESE DOCUMENTS REFLECT EQUIPMENT ORDERED OF DATE SHOWN BELOW.

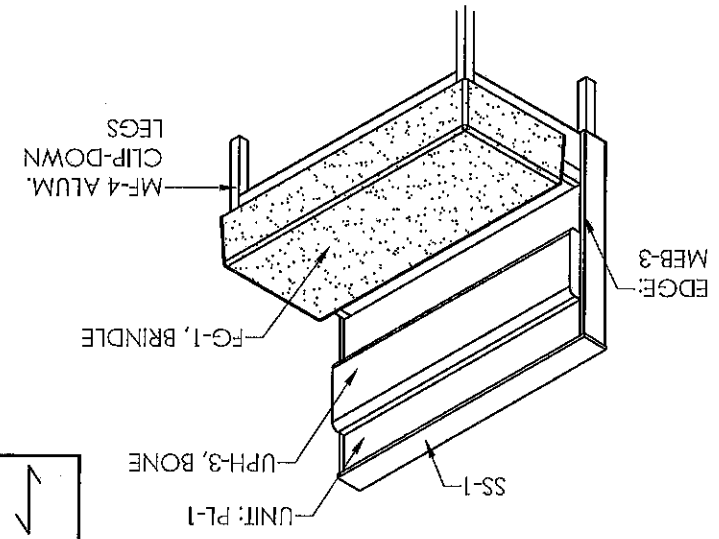
CHARTER HOUSE HOLDINGS, LLC  
 200 North Franklin Street  
 Zeeland, MI 49464  
 www.goloChi.com  
 Tel: 616.399.6000 Fax: 616.399.8396  
 This drawing contains proprietary information by CHI. Unauthorized use or reproduction is prohibited without expressed written consent of CHI.



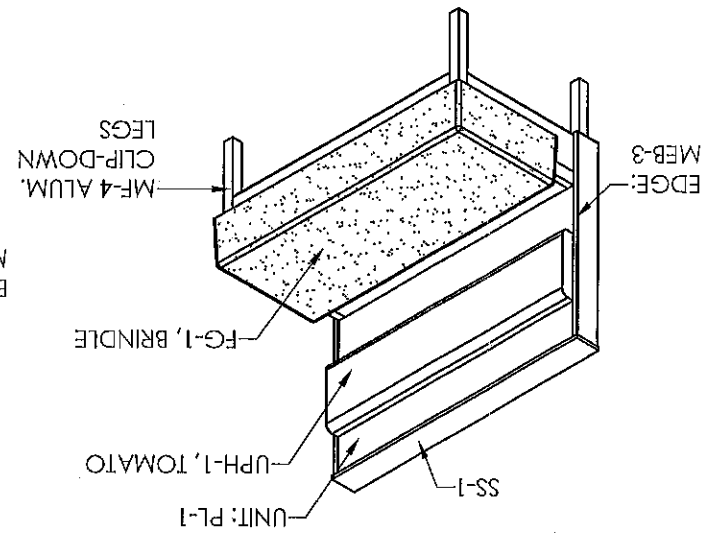
NOTE: SEE SPECIFICATIONS PAGE

12-11-14  
 M  
 JRP

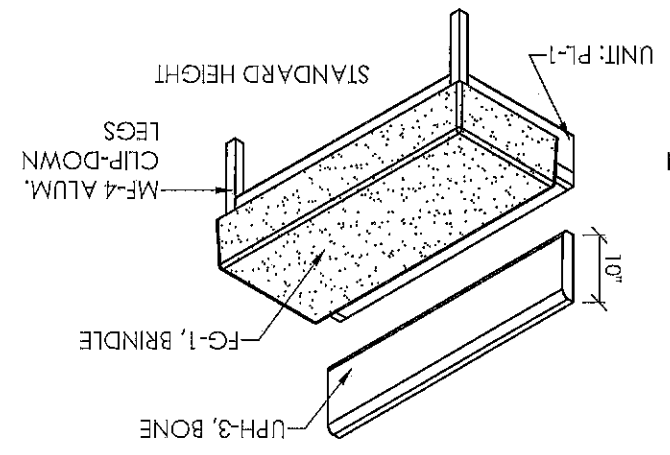
**Stepback Booth (Style - 2)** SCALE: N.T.S. F4



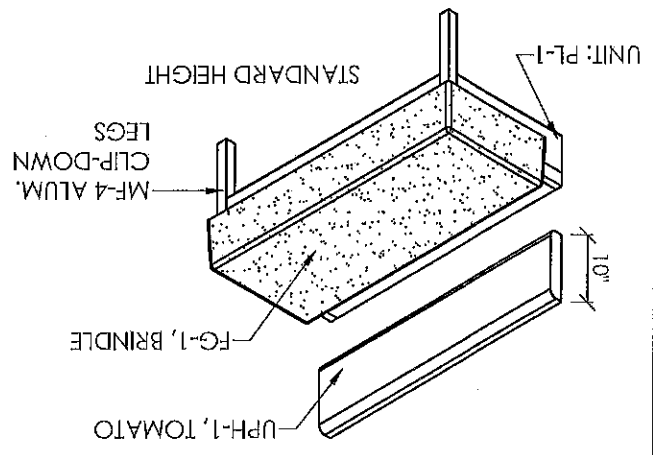
**Stepback Booth (Style - 1)** SCALE: N.T.S. F3



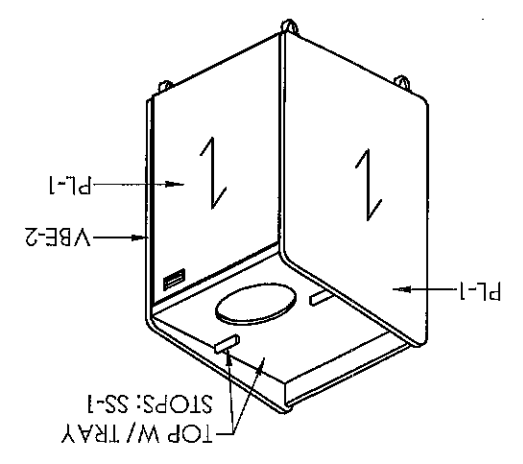
**Stepback Settee (Style - 1)** SCALE: N.T.S. F2



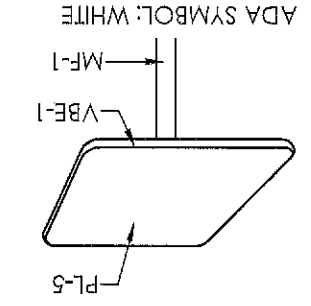
**Stepback Settee (Style - 1)** SCALE: N.T.S. F1



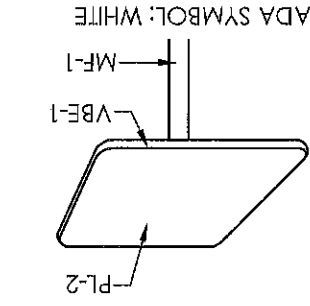
**TT-Kennedy** SCALE: N.T.S. F9



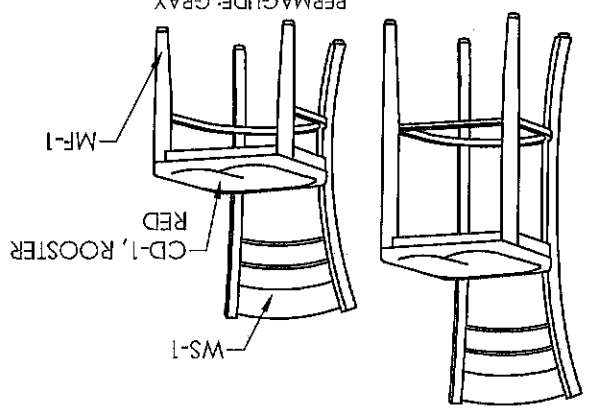
**Table - B** SCALE: N.T.S. F8



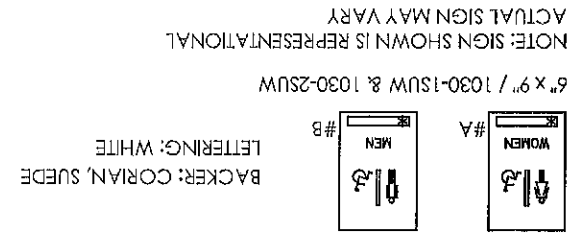
**Table - A** SCALE: N.T.S. F7



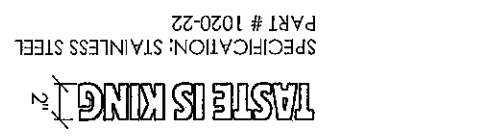
**Sheldon Chair** SCALE: N.T.S. F6



**Restroom Signage - "Women" & "Men"** SCALE: N.T.S. F11



**"Taste is King" Applique** SCALE: N.T.S. F10



PRODUCT IMAGES: NOT TO SCALE

PROJECT: <b>Burger King</b>	
LOCATION: <b>METWINDALE, MI</b>	ADDRESS: <b>18250 ALLEN RD.</b>
NAT'L STORE #: <b>3996</b>	BLDG. SHEET: <b>ART</b>
FDD SER: <b>ISSUED FOR TENDER</b>	PROJECT MGR: <b>SCOTT SIMPSON</b>
SALES MGR: <b>KEITH LEBERT</b>	SET ISSUED DATE: <b>17 NOVEMBER 2014</b>
DRAWING TITLE: <b>PRODUCT DETAILS</b>	
SCALE: <b>N.T.S.</b>	CH PROJECT: <b>3996</b>
DRAWING: <b>D12 of D14</b>	

12-2-14  
 JLB  
 M



**Important Notes**

1. WRITTEN DIMENSIONS HAVE PRECEDENCE OVER SCALE IN ALL CASES.
2. THE GENERAL CONTRACTOR MUST VERIFY ALL BUILDING DIMENSIONS, EQUIPMENT, FURNITURE PLACEMENT, UTILITY LOCATIONS, AND CONDITIONS AT THE JOB SITE.
3. THE GENERAL CONTRACTOR MUST NOTIFY CHL OF ALL DISCREPANCIES AND/OR REQUIRED ADJUSTMENTS PRIOR TO STARTING WORK.
4. **DO NOT SCALE OFF PLANS.** CALL YOUR CHL PROJECT MANAGER TO VERIFY ANY QUESTIONABLE DIMENSIONS (616) 399-6000.
5. ALL DIMENSIONS ARE FOR DESIGN INTENT ONLY.
6. CHL HAS PREPARED THESE DOCUMENTS AS ACCURATELY AS POSSIBLE WITH THE ARCHITECTURAL INFORMATION PROVIDED. DUE TO LACK OF ACCURATE AND COMPLETE DIMENSIONS ARCHITECTURAL PLANS, OWNER UNDERSTANDS THAT ADJUSTMENTS TO THE FINAL LOCATIONS OF EQUIPMENT AND/OR FURNITURE PLACEMENT MAY BE REQUIRED AT THE ACTUAL JOB SITE DIMENSIONS AND CONDITIONS.
7. REFER TO ARCHITECTURAL OR ENGINEER DRAWINGS FOR COMPLETE AND ACCURATE DIMENSIONS OF BUILDING STRUCTURE.
8. THESE CONTRACT DOCUMENTS AND THE INFORMATION THEY CONTAIN ARE THE PROPERTY OF CHL.
9. ALL CONTRACT DOCUMENTS MAY NOT BE COPIED, REPRODUCED, USED OR IMITATED IN ANY WAY, IN PART OR IN WHOLE, WITHOUT THE EXPRESS WRITTEN CONSENT OF CHL.
10. ANY UNAUTHORIZED USE OF THESE PLANS WILL RESULT IN PAYMENT DUE FOR SERVICES RENDERED BY CHL.
11. ANY DEVIATIONS FROM THESE DRAWINGS FOR ANY REASON SHALL NOT BE DONE WITHOUT CONSENT OF CHL IN ADVANCE. IN WRITING, CHL IS NOT RESPONSIBLE FOR DEVIATIONS, CHANGES, ADDITIONS, OR DELETIONS NOT REVIEWED AND APPROVED IN ADVANCE BY CHL.
12. THESE DOCUMENTS REFLECT EQUIPMENT ORDERED OF DATE SHOWN BELOW.

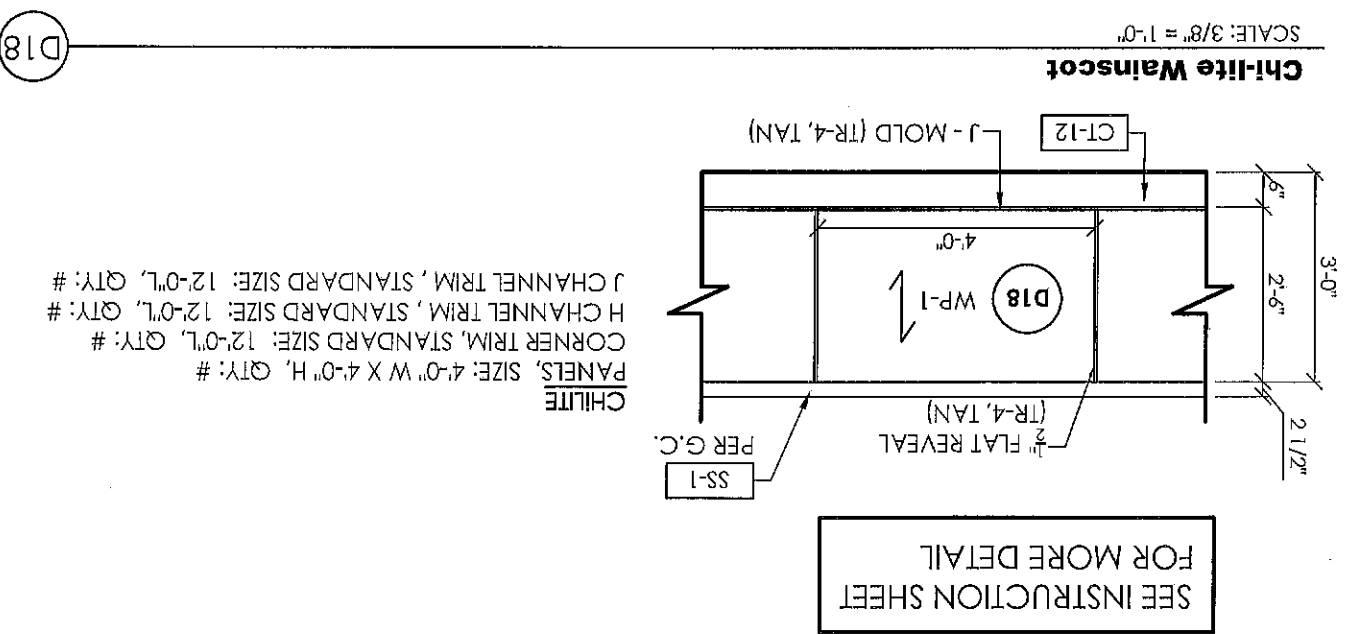
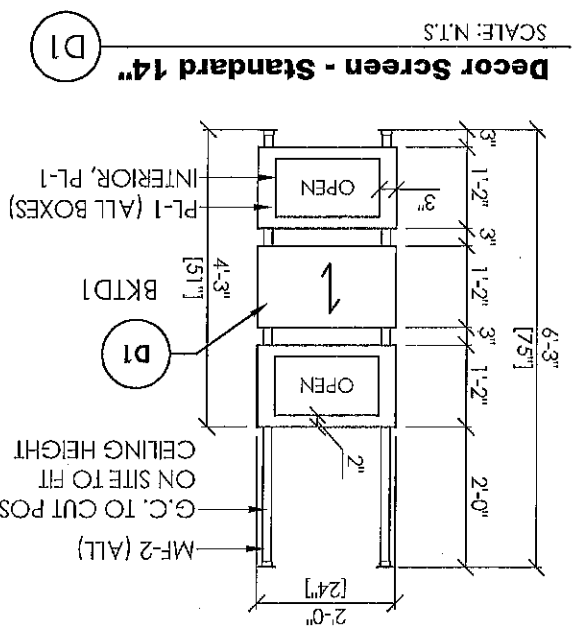
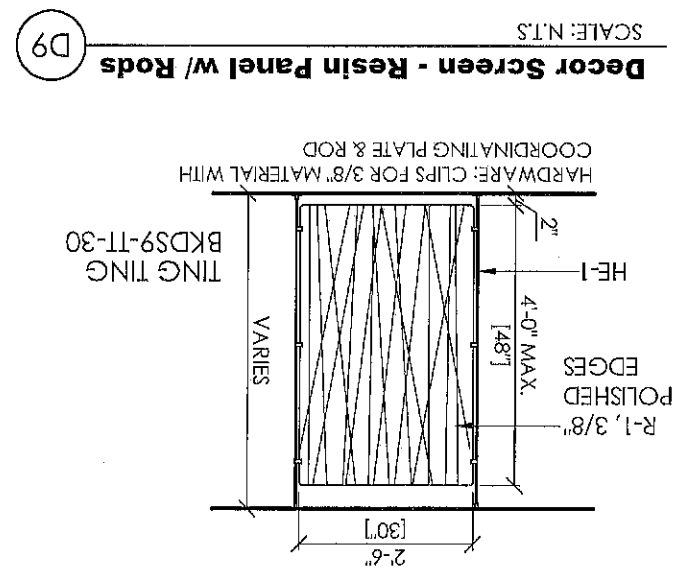
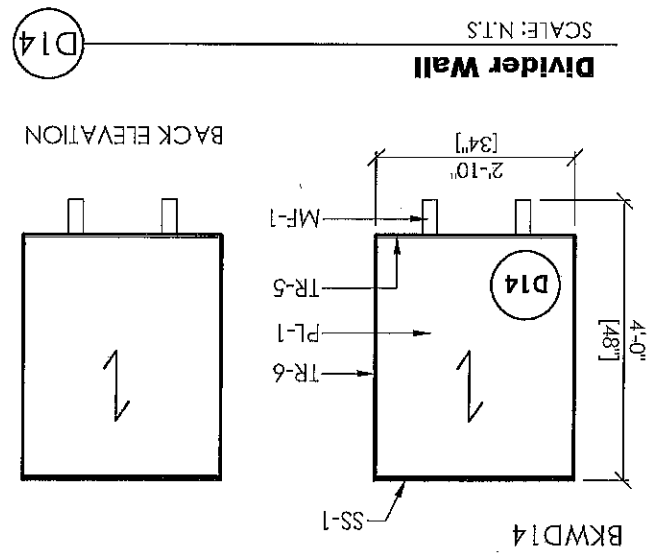
CHARTER HOUSE HOLDINGS, LLC  
 200 North Franklin Street  
 Zeeland, MI 49464  
 www.gotChl.com  
 Tel: 616.399.6000 Fax: 616.399.8396

This drawing contains proprietary information by CHL. Unauthorized use or reproduction is prohibited without expressed written consent of CHL.



INDICATES PATTERN DIRECTION

NOTE: SEE SPECIFICATIONS PAGE



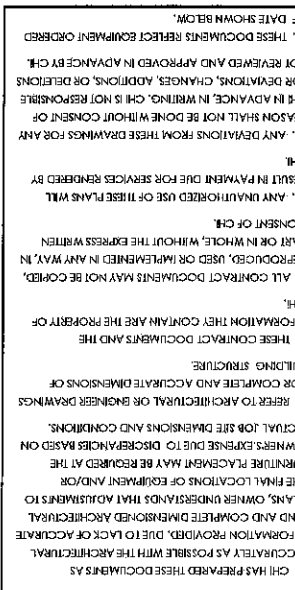


CHARTER HOUSE HOLDINGS, LLC  
200 North Franklin Street  
Zeeland, MI 49464  
www.gotChI.com  
Tel: 616.399.6000 Fax: 616.399.8396

This drawing contains proprietary information by CH! Unintended use or reproduction is prohibited without expressed written consent of CH!

**Important Notes**

1. WRITTEN DIMENSIONS HAVE PRECEDENCE OVER SCALE IN ALL CASES.
2. THE GENERAL CONTRACTOR MUST VERIFY ALL BUILDING DIMENSIONS, EQUIPMENT, FURNITURE PLACEMENT, UTILITY LOCATIONS, AND CONDITIONS AT THE JOB SITE.
3. THE GENERAL CONTRACTOR MUST NOTIFY CH! OF ALL DISCREPANCIES AND/OR REQUIRED ADJUSTMENTS PRIOR TO STARTING WORK.
4. DO NOT SCALE OFF PLANS.  
CALL YOUR CH! PROJECT MANAGER TO VERIFY ANY QUESTIONABLE DIMENSIONS (616) 399-6000.
5. ALL DIMENSIONS ARE FOR DESIGN INTENT ONLY.
6. CH! HAS PREPARED THESE DOCUMENTS AS ACCURATELY AS POSSIBLE WITH THE ARCHITECTURAL INFORMATION PROVIDED. DUE TO LACK OF ACCURATE AND COMPLETE DIMENSIONS ARCHITECTURAL PLANS, OWNER UNDERSTANDS THAT ADJUSTMENTS TO THE FINAL LOCATIONS OF EQUIPMENT AND/OR FURNITURE PLACEMENT MAY BE REQUIRED AT THE OWNER'S EXPENSE DUE TO DISCREPANCIES PASSED ON ACTUAL JOB SITE DIMENSIONS AND CONDITIONS.
7. REFER TO ARCHITECTURAL OR ENGINEER DRAWINGS FOR COMPLETE AND ACCURATE DIMENSIONS OF BUILDING STRUCTURE.
8. THESE CONTRACT DOCUMENTS AND THE INFORMATION THEY CONTAIN ARE THE PROPERTY OF CH!.
9. ALL CONTRACT DOCUMENTS MAY NOT BE COPIED, REPRODUCED, USED OR REPRINTED IN ANY WAY, IN PART OR IN WHOLE, WITHOUT THE EXPRESS WRITTEN CONSENT OF CH!.
10. ANY UNAUTHORIZED USE OF THESE PLANS WILL RESULT IN PAYMENT DUE FOR SERVICES RENDERED BY CH!.
11. ANY DEVIATIONS FROM THESE DRAWINGS FOR ANY REASON SHALL NOT BE DONE WITHOUT CONSENT OF CH! IN ADVANCE. IN WRITING, CH! IS NOT RESPONSIBLE FOR CHANGES, ADDITIONS, OR DELETIONS NOT REVIEWED AND APPROVED IN ADVANCE BY CH!.
12. THESE DOCUMENTS REFLECT EQUIPMENT ORDERED AS OF DATE SHOWN BELOW.



PROJECT: Burger King  
LOCATION: MELWINDALE, MI  
ADDRESS: 18250 ALLEN RD.  
MAIL STORE #: 3996  
BLDG. SHEET: ART  
FDD SER: ---  
PROJECT MGR: SCOTT SIMPSON  
SALES MGR: KEITH LEBERT  
SET ISSUED DATE: 17 NOVEMBER 2014  
DRAWING TITLE: SPECIFICATIONS  
SCALE: N.T.S.  
3996  
DRAWING: D13a of D14

12-1-14  
K  
J  
C  
S

CODE	MATERIAL	LOCATION	MANUFACTURER	PRODUCT SPECIFICATION	DIMENSION	CONTACT / ADDITIONAL INFORMATION	GC / CHI
UPH-1	UPHOLSTERY	FIXTURES AS NOTED	CF STINSON	AVANT, AV108, TOMATO	LOCAL DISTRIBUTOR		CHI
UPH-3	UPHOLSTERY	FIXTURES AS NOTED	CF STINSON	AVANT, AV130, BONE	LOCAL DISTRIBUTOR		CHI
FG-1	FIBERGLASS	BOOTH SEATS	CHI CHOICE	BRINDLE   REFERENCE FABRIC: CFTNSION, LAREDO, L19 BRINDLE	LOCAL DISTRIBUTOR		CHI
CD-1	CH-DEK	CHAIR SEATS	CHI CHOICE	FOOSTER RED #12037, TEXTURE CASHMERE	LOCAL DISTRIBUTOR		CHI
WS-1	WOOD STAIN	CHAIR BACK	PER CHI CHOICE	CLEAR MAPLE	LOCAL DISTRIBUTOR		CHI
WP-1	WALL PANEL SYSTEM	GENERAL WAINSCOTTING	CHI-LITE BY CHARTER HOUSE	PIONITE, WP115-F APPEARS LIKE TRE-SUPERMATE (NOTE: LAMINATE ADHERED TO 1/4" SUBSTRATE W/ VERT. TRIM)	VERTICAL GRADE   CHARTER HOUSE / CONTACT CHI PROJECT SALES REPRESENTATIVE FOR INFO		CHI
PL-1	PLASTIC LAMINATE	BOOTH / INTERIOR DOORS / MSC.	PIONITE	SH11 00024 (WP115-F) APPEARS LIKE TRE-SUPERMATE	LOCAL DISTRIBUTOR		GC & CHI
PL-2	PLASTIC LAMINATE	TABLE TOPS	WILSONART	7969-38 WAREHOUSE OAK	LOCAL DISTRIBUTOR		CHI
PL-5	PLASTIC LAMINATE	ACCENT TABLE TOPS	PIONITE	WY160-N ABSOLUTE AKAJOU	LOCAL DISTRIBUTOR		CHI
PL-6	PLASTIC LAMINATE	CHAIR BACK & FRONT / ACCENT SOFFIT	FORMICA	6902-58 GREENADINE	LOCAL DISTRIBUTOR		CHI
MF-1	METAL FINISH, POWDER COAT	FIXTURES AS NOTED	PER CHI CHOICE	RESOLVE SILVER METALLIC	LOCAL DISTRIBUTOR		CHI
MF-4	METAL FINISH, ALUMINUM	FIXTURES AS NOTED	PER CHI CHOICE	BKC STANDARD - ETCH & CLEAR	LOCAL DISTRIBUTOR		CHI
VB-1	VINYL BASE EDGE	TABLE EDGES	PER CHI CHOICE	T-EDGE, SILVER	LOCAL DISTRIBUTOR		CHI
VB-2	VINYL BASE EDGE	TRASH ENCLOSURES	PER CHI CHOICE	T-EDGE, SILVER	LOCAL DISTRIBUTOR		CHI
MB-3	MULTIFLEX EDGE BAND	BOOTH EDGE PROTECTION	REHAU	PREMIUM EDGE BAND, APPEARS LIKE TRE	LOCAL DISTRIBUTOR		CHI
SS-1	SOLID SURFACE	FIXTURES AS NOTED	GORIAN	WITCH HAZEL, PRIVATE COLLECTION	LOCAL DISTRIBUTOR		GC & CHI
RE-1	RESIN	LINEAR WALL / DECOR SCREEN	3-FORMA	VARIA ECOREFIN - ORGANICS, TING TING, FINISH FRONT & BACK; PATENT (VERTICAL PATTERN) 3 WEEK LEAD TIME	CONTACT: JULIANA SHARKEY@964-579-6545		CHI
HE-1	HARDWARE	DECOR SCREEN	GORD STANDOFF SYSTEMS	EZ-A13-975R CLIP FOR 3/8" MATERIAL & COORDINATING PLATE & ROD	LOCAL DISTRIBUTOR		CHI
TR-1	TRIM	SERVICE COUNTER KNEEWALL	PER G.C. CHOICE	CLEAR SILVER (FURNITURE GRADE ALUM)	LOCAL DISTRIBUTOR		CHI
TR-4	TRIM	WAINSCOT CHILITE TRIM	CHI CHOICE	TAN (FURNITURE GRADE ALUM) (CORNER, H-TRIM, J-TRIM)	LOCAL DISTRIBUTOR		CHI
TR-5	TRIM	HORIZ. WALL TRIM	PER CHI CHOICE	CLEAR SILVER (FURNITURE GRADE ALUM) (H-TRIM & WALL BOTTOM CORNER TRIM)	LOCAL DISTRIBUTOR		CHI
TR-6	TRIM	CHI PRODUCT / WALLS	PER CHI CHOICE	CORNER GUARDS - ALUMINUM EXTRUSION W/ CLEAR ANODIZED FINISH (LOW PROFILE)	LOCAL DISTRIBUTOR	1/8"	CHI
P-2	PAINT	MENU BOARD	GLIDDEN PROFESSIONAL	PAINT: #00NN 07/00 DEEP ONYX / LIFE MASTER ACCENTS INTERIOR/EXTERIOR EGGSHELL #3002-0500N	CONTACT: NEAREST STORE LOCATIONS: (800) 984-5444 / BK SPECIAL PRICING REF. #9044		GC
P-3	PAINT	INTERIOR WALLS / RESTROOM CEILING	GLIDDEN PROFESSIONAL	PAINT: #10 YR 30/106 WRIGHT STONE / LIFE MASTER NO VOC ACRYLIC EGGSHELL #9300-0110	CONTACT: NEAREST STORE LOCATIONS: (800) 984-5444 / BK SPECIAL PRICING REF. #9044		GC
P-4	PAINT	INTERIOR DOOR FRAMES	GLIDDEN PROFESSIONAL	PAINT: #10 YR 30/106 WRIGHT STONE / LIFE MASTER OIL INTERIOR/EXTERIOR SEMI-GLOSS #1506-0110	CONTACT: NEAREST STORE LOCATIONS: (800) 984-5444 / BK SPECIAL PRICING REF. #9044		GC
P-7	PAINT	SERVICE COUNTER BULKHEAD	GLIDDEN PROFESSIONAL	PAINT: #10YR 15/500 RED LETTER DAY / LIFE MASTER ACCENTS INTERIOR/EXTERIOR EGGSHELL #3002-0500N	CONTACT: NEAREST STORE LOCATIONS: (800) 984-5444 / BK SPECIAL PRICING REF. #9044		GC
ACT-1	ACOUSTICAL CEILING TILE	DINING	ARMSTRONG	FINE FISURED, #1732 COLOR: WHITE (OR) ADOBE, GRID: ANGLED REGULAR 15/16" GRID COLOR: WHITE (OR) ADOBE	CONTACT: ARMSTRONG STRATEGIC ACCOUNTS (800) 442-4212	2' X 2'	GC
ACT-2	ACOUSTICAL CEILING TILE	BACK OF HOUSE (BACK KITCHEN)	ARMSTRONG	#BF670 ENVIRONMENTAL PANEL COLOR: WHITE / GRID: PRELUDE 15/16 EXPOSED TEE GRID / GRID COLOR: WHITE	CONTACT: ARMSTRONG STRATEGIC ACCOUNTS (800) 442-4212	2' X 4'	GC
LP-1	PENDANT	MAIN DINING	BESA LIGHTING	BESA CIERRO, TYPE PA - J114124RM-SN-LAMP, RUBY MATTE (NO GRILL)	CONTACT: RON LARIMORE @ LSI INDUSTRIES, INC (800) 436-7800 X 3375	5.375"D X 9.7-375H	GC
RC-1	RECESSED CAN	MAIN DINING	PER APPROVED VENDOR	PER APPROVED VENDOR		8" DIA.	GC

**MAIN FIXTURE AND PRODUCT FINISHES**

specifications continued on next page



CHARTER HOUSE HOLDINGS, LLC  
200 North Franklin Street  
Zeebuck, MI 49464  
www.gotCH.com  
Tel: 616.399.6000 Fax: 616.399.8396

This drawing contains proprietary information by CH! Unauthorised use or reproduction is prohibited without expressed written consent of CH!

**Important Notes**

1. ALL DIMENSIONS HAVE PRECEDENCE OVER SCALE IN ALL CASES.
2. THE GENERAL CONTRACTOR MUST VERIFY ALL BUILDING DIMENSIONS, EQUIPMENT, FURNITURE PLACEMENT, UTILITY LOCATIONS, AND CONDITIONS AT THE JOB SITE.
3. THE GENERAL CONTRACTOR MUST NOTIFY CH OF ALL DISCREPANCIES AND/OR REQUIRED ADJUSTMENTS PRIOR TO STARTING WORK.
4. DO NOT SCALE OFF PLANS  
CALL YOUR CH PROJECT MANAGER TO VERIFY ANY QUESTIONABLE DIMENSIONS (616) 399-8000
5. ALL DIMENSIONS ARE FOR DESIGN INTENT ONLY.
6. CH HAS PREPARED THESE DOCUMENTS AS ACCURATELY AS POSSIBLE WITH THE ARCHITECTURAL INFORMATION PROVIDED. DUE TO LACK OF ACCURATE AND COMPLETE DIMENSIONS ARCHITECTURAL PLANS, OWNER UNDERSTANDS THAT ADJUSTMENTS TO THE FINAL LOCATIONS OF EQUIPMENT AND/OR FURNITURE PLACEMENT MAY BE REQUIRED AT THE MANUFACTURER'S EXPENSE DUE TO DISCREPANCIES BASED ON ACTUAL JOB SITE DIMENSIONS AND CONDITIONS.
7. REFER TO ARCHITECTURAL OR ENGINEER DRAWINGS FOR COMPLETE AND ACCURATE DIMENSIONS OF BUILDING STRUCTURE.
8. THESE CONTRACT DOCUMENTS AND THE INFORMATION THEY CONTAIN ARE THE PROPERTY OF CH.
9. ALL CONTRACT DOCUMENTS MAY NOT BE CORRECTED, REPRODUCED, USED OR IMPROVED IN ANY WAY, IN PART OR IN WHOLE, WITHOUT THE EXPRESS WRITTEN CONSENT OF CH.
10. ANY UNAUTHORIZED USE OF THESE PLANS WILL RESULT IN PAYMENT DUE FOR SERVICES RENDERED BY CH.
11. ANY DEVIATIONS FROM THESE DRAWINGS FOR ANY REASON SHALL NOT BE DONE WITHOUT CONSENT OF CH.
12. THESE DOCUMENTS RESPECT EQUIPMENT ORDERED OF DATE SHOWN BELOW.

**Burger King**  
PROJECT: MEYVINDALE, MI  
ADDRESS: 18250 ALLEN RD.  
NAT'L STORE #: 3996  
Bldg. SHEET: ART  
FDD SER: ISSUED FOR TENDER  
PROJECT MGR: SCOTT SIMPSON  
SALES MGR: KETH LEBERT  
17 NOVEMBER 2014  
DRAWING TITLE: SPECIFICATIONS  
CH PROJECT: 3996  
SCALE: N.T.S.  
DRAWINGS: D13b of D14



**CODE MATERIAL LOCATION MANUFACTURER PRODUCT SPECIFICATION DIMENSION CONTACT / ADDITIONAL INFORMATION**

TS-1	TRANSITION STRIP	DINING FLOOR TRANSITION	SCHLUTTER SYSTEMS	SCHIENE (RADIUS) AE 100 - R. SATIN ANODIZED ALUMINUM	3/8" - 10MM	CONTACT: JAY WRAY AT SCHLUTTER SYSTEMS (800) 472-4588 X112	GC
TS-2	CORNER TRANSITION TRIM	GENERAL DINING / TILE	PER G.C. / SCHLUTTER	TILE TRANSITION TRIM - BRUSHED ALUMINUM (WHEN APPLICABLE TO DESIGN)		LOCAL DISTRIBUTOR	GC

GR-1	GROUT	ACCENT/FIELD TILE	CUSTOM BUILDING PRODUCTS	POLYBEND, SANDED; # 185 NEW TAURE / ***FOR SETTING MATERIALS USE COMPLETE CONTACT RAPID SET		CONTACT: 800-282-8786	GC
GR-2	GROUT	WALL TILE	CUSTOM BUILDING PRODUCTS	POLYBEND, SANDED; #101 QUARTZ / ***FOR SETTING MATERIALS USE COMPLETE CONTACT RAPID SET		CONTACT: 800-282-8786	GC
GR-3	GROUT	RESTROOMS (FLOOR & WALL)	CUSTOM BUILDING PRODUCTS	POLYBEND, SANDED; # 19 PEWTER / ***FOR SETTING MATERIALS USE COMPLETE CONTACT RAPID SET		CONTACT: 800-282-8786	GC
GR-4	GROUT	RESTROOMS (WALL)	CUSTOM BUILDING PRODUCTS	POLYBEND, SANDED; #101 QUARTZ / ***FOR SETTING MATERIALS USE COMPLETE CONTACT RAPID SET		CONTACT: 800-282-8786	GC
GR-5	GROUT	FOOD PREP (WALL)	CUSTOM BUILDING PRODUCTS	POLYBEND, SANDED; #381 BRIGHT WHITE / ***FOR SETTING MATERIALS USE COMPLETE CONTACT RAPID SET		CONTACT: 800-282-8786	GC
GR-6	GROUT	BACK OF HOUSE (FLOOR)	LATICRETE	#46 RAYEN - SPECTRALOCK 2000 IG (USE WITH CT-10, CT-11)		CONTACT: 800-282-8786	GC
GR-8	GROUT	FIELD TILE	CUSTOM BUILDING PRODUCTS	POLYBEND, SANDED; #386 OYSTER GRAY / ***FOR SETTING MATERIALS USE COMPLETE CONTACT RAPID SET		CONTACT: 800-282-8786	GC
GR-9	GROUT	SERV. COUNTER KNEEWALL (OPTION)	LATICRETE	#66 CHESTNUT BROWN - POLYBEND SANDED (USE WITH CT-10) ***CONTRACTOR TO ALLOW 1/8" MAX. FOR GROUT JOINT		CONTACT: 800-282-8786	GC
GR-10	GROUT	ACCENT WALL TILE (DINING)	CUSTOM BUILDING PRODUCTS	POLYBEND, SANDED; #52 TOBACCO BROWN / ***FOR SETTING MATERIALS USE COMPLETE CONTACT RAPID SET		CONTACT: 800-282-8786	GC
GR-11	GROUT	WAINSCOT TILE (WP-1 OPTION)	CUSTOM BUILDING PRODUCTS	POLYBEND, SANDED; # 145 LIGHT SMOKE / ***FOR SETTING MATERIALS USE COMPLETE CONTACT RAPID SET		CONTACT: 800-282-8786	GC
GR-12	GROUT	ACCENT RESTROOM TILE	LATICRETE	#24 NATURAL GRAY - POLYBEND SANDED ***CONTRACTOR TO ALLOW 1/8" MAX. FOR GROUT JOINT		CONTACT: DAVID MEYERS @ LATICRETE (203) 376-8113 / dameyers@laticrete.com	GC
GR-13	GROUT	RED TILE AT BEVERAGE STATION	MAPBI	CHAMIOS #05		LOCAL DISTRIBUTOR	GC

**FLOOR AND WALL TILE FINISHES / THE BELOW SPECIFICATIONS ARE THE BKC APPROVED TILE GROUPING OPTIONS. ( PLEASE SELECT PREFERRED GROUP )**

CT-10	QUARRY TILE (IF REQ)	BACK OF HOUSE (FLOOR)	DALTILE	QUARRY TILE, 0042 ARID GRAY (USE WITH GR-6) ***ADD ABRASIVE GRAIN	6" x 6"	CONTACT: DALTILE SUPPORT CENTER @ (877) 556-5728	GC
CT-11	QUARRY TILE BASE (IF REQ)	BACK OF HOUSE, COVE BASE (FLOOR)	DALTILE	QUARRY TILE, G-3655 COVE BASE - ARID GRAY (USE WITH GR-6) ***ADD ABRASIVE GRAIN	5" x 6"	CONTACT: DALTILE SUPPORT CENTER @ (877) 556-5728	GC
CT-14	CERAMIC TILE	BEVERAGE CENTER BACK WALLS (RED)	GRANITI FIANDRE / EUROWEST	RITMO ROSSO, (USE GR-13) (NOTE: MUST USE WITH COORDINATING BK CUSTOM RED "IMPROVED" MATERIAL OPTIONS)	8" x 13"	CONTACT: JAN DETER AT EUROWEST @ (714) 309-9551	GC
CT-16	CERAMIC TILE (OPTION 1)	DINING AREA	EMASER TILE	1" x 2" SPLT FACE OFFSET BEIGE; ANTIQUE AND TUMBLER STONE MOSAIC (USE GR-2) ***NOTE: EMASER TO SEAL STONE MANUFACTURED STONE, MOON GLOW, M580, CHISELED READY STACK (USE GR-2) ***NOTE: DALTILE TO SEAL STONE	12" x 12" MESH VARIES 3/4" THICK	CONTACT: WENDY WILLIAMS @ (310) 387-8652	GC
CT-16	CERAMIC TILE (OPTION 2)	DINING AREA	DALTILE	MANUFACTURED STONE, MOON GLOW, M580, CHISELED READY STACK (USE GR-2) ***NOTE: DALTILE TO SEAL STONE	12" x 24"	CONTACT: JAN DETER AT EUROWEST @ (714) 309-9551	GC
CT-21	CERAMIC TILE (OPTION 2)	DINING AREA	DALTILE	KIMONA SILK, WHITE ORCHID P320 (USE GR-2)	12" x 24"	CONTACT: DALTILE SUPPORT CENTER @ (877) 556-5728	GC

**ACCENT WALL TILE AT FRONT SERVICE COUNTER SIDE WALLS / AND BEVERAGE CENTER**

CT-18	CERAMIC TILE	SERV. COUNTER KNEEWALL / WALLS	GRANITI FIANDRE / EUROWEST	LEGNI HIGH TECH, ROVERE ANICO (USE GR-9)	6" x 36"	CONTACT: JAN DETER AT EUROWEST @ (714) 309-9551	GC
CT-20	CERAMIC TILE	SERV. COUNTER KNEEWALL / WALLS	GRANITI FIANDRE / EUROWEST	LEGNI HIGH TECH, ROVERE MOKA (USE GR-10)	6" x 36"	CONTACT: JAN DETER AT EUROWEST @ (714) 309-9551	GC

**TILE GROUP OPTION - A**

CT-1	CERAMIC TILE	ACCENT TILE	EMASER TILE	ALPINE, ESPRESSO (USE GR-1)	6" x 36"	CONTACT: WENDY WILLIAMS @ (310) 387-8652	GC
CT-2	CERAMIC TILE	FIELD TILE	EMASER TILE	SANDSTONE, BEIGE (USE GR-1)	12" x 24"	CONTACT: WENDY WILLIAMS @ (310) 387-8652	GC
CT-3	CERAMIC TILE	RESTROOMS (WALL & FLOOR)	EMASER TILE	SPECTRUM, NYSHIRA (USE GR-3)	12" x 12"	CONTACT: WENDY WILLIAMS @ (310) 387-8652	GC
CT-4	CERAMIC TILE	RESTROOMS, COVE BASE	EMASER TILE	SPECTRUM, NYSHIRA (USE GR-3)	6" x 12"	CONTACT: WENDY WILLIAMS @ (310) 387-8652	GC
CT-5	CERAMIC TILE	RESTROOMS (WALL)	EMASER TILE	SPECTRUM, ACAMAR (USE GR-4)	12" x 12"	CONTACT: WENDY WILLIAMS @ (310) 387-8652	GC
CT-7	CERAMIC TILE	RESTROOMS, COVE BASE	EMASER TILE	SPECTRUM, ACAMAR (USE GR-4)	6" x 12"	CONTACT: WENDY WILLIAMS @ (310) 387-8652	GC
CT-9	CERAMIC TILE	FOOD PREP (WALL)	INTERCERAMIC	IC BRIGHT, ULTRA WHITE (USE GR-9)	8" x 10"	CONTACT: JEFF WELLS @ (817) 851-2176	GC
CT-12	CERAMIC TILE	DINING AREA BASE	INTERCERAMIC	ADVANCED GRIGO (USE GR-9)	6" x 24" CUT TILE	CONTACT: JEFF WELLS @ (817) 851-2176	GC
CT-12	CERAMIC TILE	DINING AREA BASE	INTERCERAMIC	ADVANCED GRIGO LIFCA (USE GR-9)	3" x 24" BULLNOSE	CONTACT: JEFF WELLS @ (817) 851-2176	GC

**TILE GROUP OPTION - B**

CT-1	CERAMIC TILE	ACCENT TILE	INTERCERAMIC	FORESLAND, CYRESS (USE GR-1)	6" x 24"	CONTACT: JEFF WELLS @ (817) 851-2176	GC
CT-2	CERAMIC TILE	FIELD TILE	INTERCERAMIC	ADVANCED GRIGO (USE GR-9)	12" x 24"	CONTACT: JEFF WELLS @ (817) 851-2176	GC
CT-3	CERAMIC TILE	RESTROOMS (WALL & FLOOR)	INTERCERAMIC	CONCRETE, DARK GRAY (USE GR-3)	12" x 12"	CONTACT: JEFF WELLS @ (817) 851-2176	GC
CT-4	CERAMIC TILE	RESTROOMS, COVE BASE	INTERCERAMIC	CONCRETE, DARK GRAY (USE GR-3)	6" x 8"	CONTACT: JEFF WELLS @ (817) 851-2176	GC
CT-5	CERAMIC TILE	RESTROOMS (WALL)	INTERCERAMIC	CONCRETE, BEIGE (USE GR-4)	12" x 12"	CONTACT: JEFF WELLS @ (817) 851-2176	GC
CT-7	CERAMIC TILE	RESTROOMS, COVE BASE	INTERCERAMIC	CONCRETE, BEIGE (USE GR-4)	6" x 8"	CONTACT: JEFF WELLS @ (817) 851-2176	GC
CT-9	CERAMIC TILE	FOOD PREP (WALL)	INTERCERAMIC	IC BRIGHT, ULTRA WHITE (USE GR-9)	8" x 10"	CONTACT: JEFF WELLS @ (817) 851-2176	GC
CT-12	CERAMIC TILE	DINING AREA BASE	INTERCERAMIC	ADVANCED GRIGO (USE GR-9)	6" x 24" CUT TILE	CONTACT: JEFF WELLS @ (817) 851-2176	GC
CT-12	CERAMIC TILE	DINING AREA BASE	INTERCERAMIC	ADVANCED GRIGO LIFCA (USE GR-9)	3" x 24" BULLNOSE	CONTACT: JEFF WELLS @ (817) 851-2176	GC

**TILE GROUP OPTION - C**

CT-1	CERAMIC TILE	ACCENT TILE	DALTILE	TIMBER GLEN, P411421F, HICKORY (USE GR-1) (PENDING SPECIFICATION PER BKC)	4" x 24"	CONTACT: DALTILE SUPPORT CENTER @ (877) 556-5728	GC
CT-2	CERAMIC TILE	FIELD TILE	DALTILE	SAN MICHELLE, S140 CREMA (VEIN CUT) (USE GR-1) (PENDING SPECIFICATION PER BKC)	12" x 24"	CONTACT: DALTILE SUPPORT CENTER @ (877) 556-5728	GC
CT-3	CERAMIC TILE	RESTROOMS (WALL & FLOOR)	DALTILE	TORREON, TN99 COAL (USE GR-3)	12" x 12"	CONTACT: DALTILE SUPPORT CENTER @ (877) 556-5728	GC
CT-4	CERAMIC TILE	RESTROOMS, COVE BASE	DALTILE	TORREON, TN99 COAL (USE GR-3)	6" x 12"	CONTACT: DALTILE SUPPORT CENTER @ (877) 556-5728	GC
CT-5	CERAMIC TILE	RESTROOMS (WALL)	DALTILE	TORREON, TN95 CLOUD (USE GR-4)	12" x 12"	CONTACT: DALTILE SUPPORT CENTER @ (877) 556-5728	GC
CT-7	CERAMIC TILE	RESTROOMS, COVE BASE	DALTILE	TORREON, TN95 CLOUD (USE GR-4)	6" x 12"	CONTACT: DALTILE SUPPORT CENTER @ (877) 556-5728	GC
CT-9	CERAMIC TILE	FOOD PREP (WALL)	DALTILE	POLARIS, P102 GLOSS WHITE (USE GR-5)	12" x 18"	CONTACT: DALTILE SUPPORT CENTER @ (877) 556-5728	GC
CT-12	CERAMIC TILE	DINING AREA BASE	DALTILE	SAN MICHELLE, S140 CREMA (VEIN CUT) (USE GR-1) (PENDING SPECIFICATION PER BKC)	6" x 24" CUT TILE	CONTACT: DALTILE SUPPORT CENTER @ (877) 556-5728	GC

**TILE GROUP OPTION - D**

CT-1	CERAMIC TILE	ACCENT TILE	GRANITI FIANDRE / EUROWEST	COCO WOOD / WOOD (USE GR-1)	6" x 24"	CONTACT: JAN DETER AT EUROWEST @ (714) 309-9551	GC
CT-2	CERAMIC TILE	FIELD TILE	GRANITI FIANDRE / EUROWEST	BK CLASSIC (HONED) (USE GR-1)	12" x 24"	CONTACT: JAN DETER AT EUROWEST @ (714) 309-9551	GC
CT-3	CERAMIC TILE	RESTROOMS (WALL & FLOOR)	GRANITI FIANDRE / EUROWEST	NIHON, NORI (HONED) (USE GR-3)	12" x 12" / 12 x 24	CONTACT: JAN DETER AT EUROWEST @ (714) 309-9551	GC
CT-4	CERAMIC TILE	RESTROOMS, COVE BASE	GRANITI FIANDRE / EUROWEST	NIHON, NORI (HONED) (USE GR-3)	6" x 12"	CONTACT: JAN DETER AT EUROWEST @ (714) 309-9551	GC
CT-5	CERAMIC TILE	RESTROOMS (WALL)	GRANITI FIANDRE / EUROWEST	NIHON, YUJI (HONED) (USE GR-4)	12" x 12" / 12 x 24	CONTACT: JAN DETER AT EUROWEST @ (714) 309-9551	GC
CT-6	CERAMIC TILE (OPTIONAL)	RESTROOMS (WALL ACCENT)	GRANITI FIANDRE / EUROWEST	ISHI BAMBOO MOSAIC (USE GR-9)	12" x 12" / 12 x 24	CONTACT: JAN DETER AT EUROWEST @ (714) 309-9551	GC
CT-7	CERAMIC TILE	RESTROOMS, COVE BASE	GRANITI FIANDRE / EUROWEST	NIHON, YUJI (HONED) (USE GR-4)	6" x 12"	CONTACT: JAN DETER AT EUROWEST @ (714) 309-9551	GC
CT-9	CERAMIC TILE	FOOD PREP (WALL)	GRANITI FIANDRE / EUROWEST	TCL, Z52060 BLANCO WHITE (GLOSS) (USE GR-5)	10" x 18"	CONTACT: JAN DETER AT EUROWEST @ (714) 309-9551	GC
CT-12	CERAMIC TILE	DINING AREA BASE	GRANITI FIANDRE / EUROWEST	BK CLASSIC (HONED) (USE GR-1)	6" x 24" CUT TILE	CONTACT: JAN DETER AT EUROWEST @ (714) 309-9551	GC

12-11-14