



ARO VET PACS



Scalable PACS and CR solutions that will grow with you and your Practice



**VET-VIEW
VET-WEBX**



Kodak Point Of Care



The Innovation Powering
Kodak Health Imaging

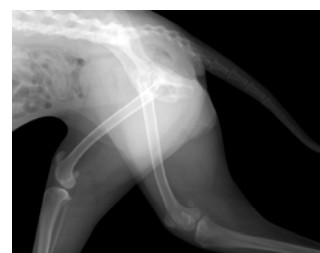
ARO PACS & CR FUNDAMENTALS

- ✓ **Kodak** Point-of-Care CR140 or CR360
- ✓ 19" Monitor DICOM Grayscale Calibrated
- ✓ **VET-VIEW** Integrated Viewing Workstation with Archive
- ✓ Dual 1 TB RAID 1 Mirrored Configuration
- ✓ Able to take other DICOM modalities such as Ultrasound
- ✓ CD/DVD Burning with DICOM & JPG Images
- ✓ Backup Hard Drive in Caddy



ARO PACS & CR FUNDAMENTALS UPGRADE

- ✓ **Kodak** Point-of-Care CR140 or CR360
- ✓ 19" Monitor DICOM Grayscale Calibrated
- ✓ **VET-VIEW** Workstation
- ✓ **VET-WEBX** Extended Archive
- ✓ Dual 2 TB RAID 1 Mirrored Configuration
- ✓ Able to take other DICOM modalities such as Ultrasound
- ✓ CD/DVD Burning with DICOM & JPG Images
- ✓ Backup Hard Drive in Caddy
- ✓ Optional Extra **VET-VIEW** Workstations



ARO PACS & CR FOR LARGE VET PRATICES

- ✓ **Kodak** Point-of-Care CR140 or CR360
- ✓ 19" Monitor DICOM Grayscale Calibrated
- ✓ **VET-VIEW** Workstations
- ✓ **VET-WEBX** Extended Archive with Unlimited WEB Users
- ✓ Dual 2 TB RAID 1 Mirrored Configuration
- ✓ Able to take other DICOM modalities such as Ultrasound
- ✓ CD/DVD Burning with DICOM & JPG Images
- ✓ Backup Hard Drive in Caddy



Who we are

We specialise in the maintenance, repair, installation and sales of imaging equipment including Carestream Health (Kodak), Image Information Systems, iCRco, Agfa, Fuji, and other manufacturers. Our Clients include, *Veterinary/Equine Practices*, Area Health Services, Hospitals (Public & Private), Medical Imaging Practices, Chiropractors and Corporate Clients. We also maintain and repair wet film processing equipment and provide a consultancy service for Imaging network configurations (including Local and Wide Area Options) & Independent Medical Imaging strategy development.

ARO Systems has 40 years combined experience in the industry attending as rapidly as is practical to equipment breakdowns in Victoria, NSW & QLD and are currently developing service networks in other states. Maintenance and repairs out of hours can be arranged by mutual agreement to minimise inconvenience your business, department or practice.

We are an authorised distributor for Carestream Health Australia, Image Information Systems, iCRco, Planar and Sorna Products. *Managing Director - Read Hedditch*

What we do

- *New & Refurbished Equipment Sales*
 - *Imaging Network Configuration*
 - *Computed Radiography Equipment*
 - *PACS Systems*
 - *X-Ray Equipment*
 - *Film & Chemistry Sales*
 - *Installation*
 - *Service & Repair*

Our Vision

We are committed to providing the highest level of service, support and solutions for customers with consistency, quality and in a timely manner. Our desire is to achieve this through the best products, service, knowledge and the most committed people to bring the best results to our customers.

If you require servicing or support for your wet processing equipment or are considering computed radiography equipment please contact:

Read Hedditch

***ARO* Systems P/L**

Unit 2, 20 Mint Street, Wodonga VIC 3690, PO Box 8017, Wodonga VIC 3689

P: (02) 6059 6664 F: (02) 6056 2355 M: 0428 596 664

E: support@arosystems.com.au W: www.arosystems.com.au