

HAND CLAMPS



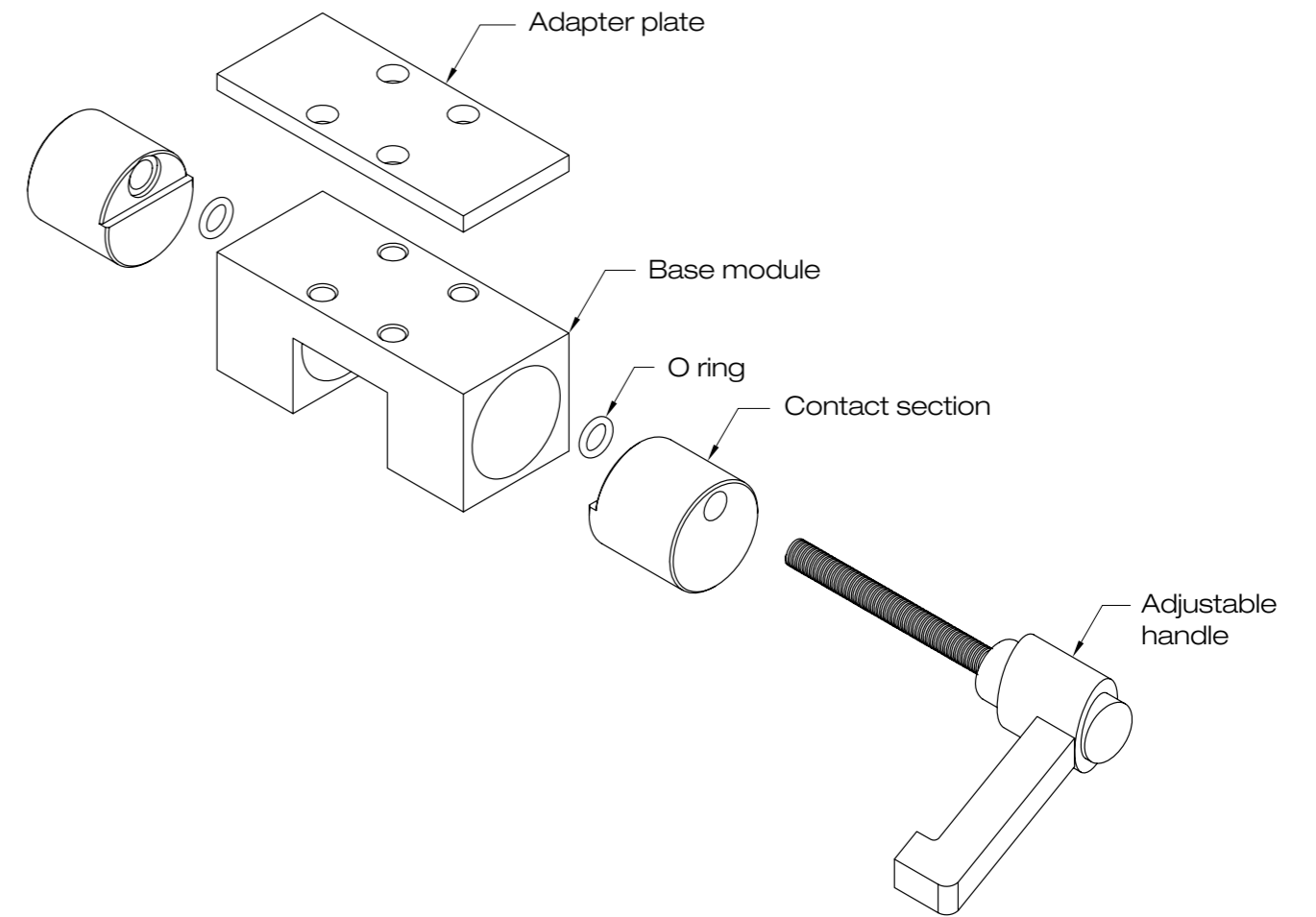
ROLLCO

SPECIALIZED
ON LINEAR MOTION

Index

Description	3
Hand clamps	4
Adapter plates	5
Selection of hand clamps	6
Product overview	7

Manual Clamping Element

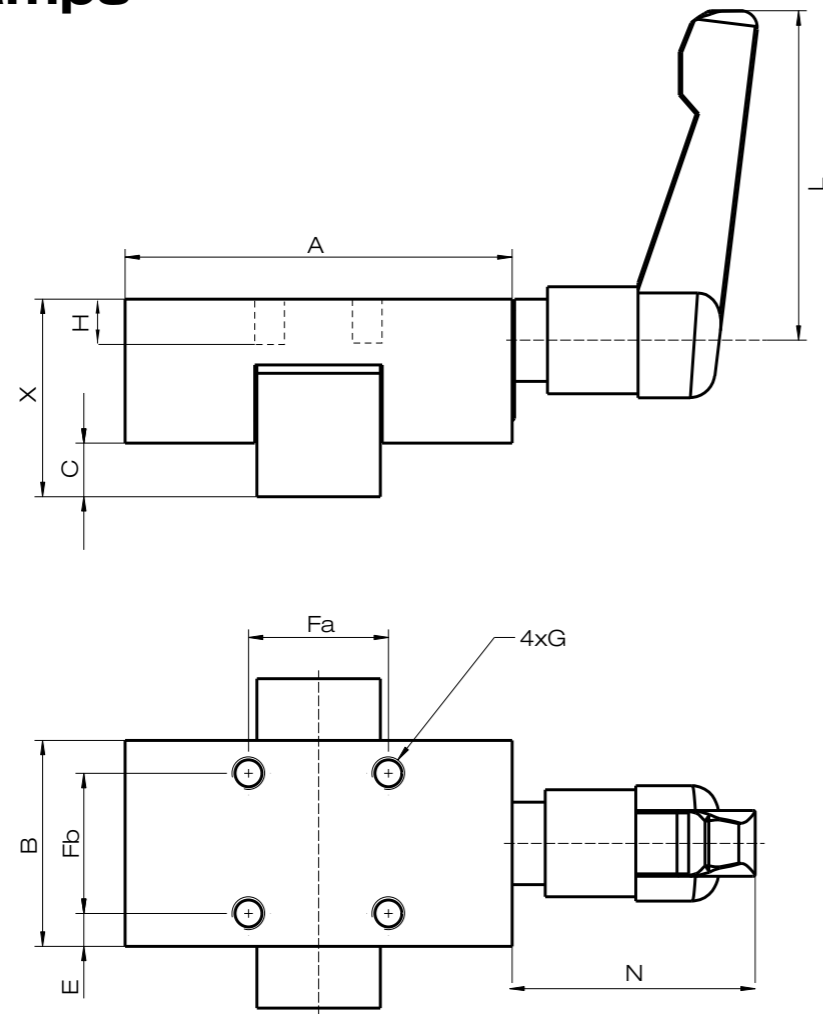


The Rollco manual clamping elements are designed to be used for holding a position when using Linear Rail Guides (SBG/SBS-type).

By rotating the free adjustable clamping lever the contact sections are pressed synchronously against the free surfaces of the rail guide section. Symmetric power transmission is guaranteed due to floating contact sections of the element.

Because of the height difference of different rail guide blocks and to ensure the proper function of the RCS Hand Clamps, the use of adapter plates is sometimes needed. The available adapter plates can be found on page 5.

Hand Clamps

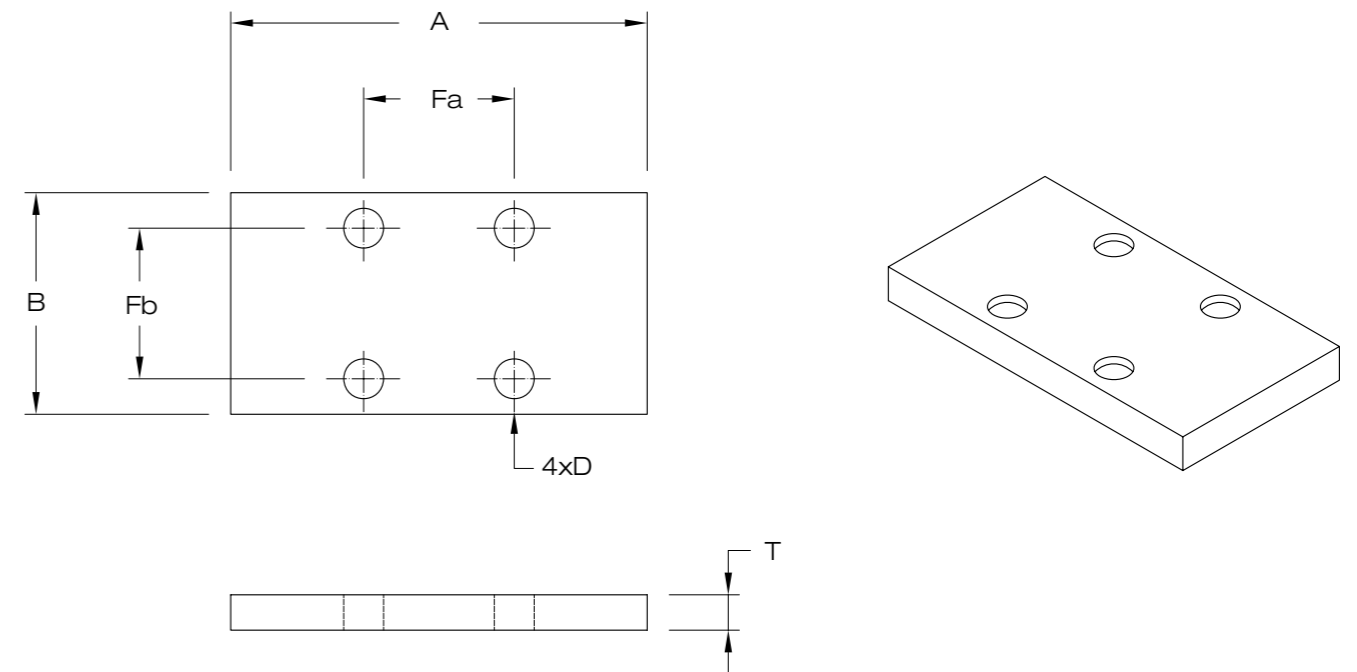


Dimensions: mm

Type	A	B	C	X	E	Fa	Fb	L	N	G	H	Clamping force	Tightening torque
												N	N
RCS 15	47	25	6,5	24	4	17	17	45	41	M4	6	1200	5
RCS 20	60	24	7	30	4,5	15	15	45	41	M5	6	1200	5
RCS 25	70	30	7	36	5	20	20	64	52	M6	8	1200	7
RCS 30	90	39	9	42	8,5	22	22	64	52	M6	14	2000	15
RCS 35	100	39	13	48	7,5	24	24	83	67	M8	14	2000	15

Steel Plates for Hand Clamps

For some block types it is necessary to use an adapter plate. A table showing the individual block types and whether an adapter plate is needed can be found on page 6.



Dimensions: mm

Type	A	B	Fa	Fb	D	T
RCP 15-4	47	25	17	17	4,5	4
RCP 20-2	60	24	15	15	5,5	2
RCP 25-4	70	30	20	20	6,5	4
RCP 30-3	90	39	22	22	6,5	3
RCP 35-7	100	39	24	24	8,5	7

Selection of Hand Clamps

Rail Guide Type	Hand Clamp	Adapter Plate
SBG15FL / SBI15FL	RCS 15	-
SBG15SL / SBI15SL	RCS 15	RCP 15-4
SBS15SL / SBI15HL	RCS 15	-
SBS15SV / SBI15FV	RCS 15	-
SBS15SV / SBI15SV	RCS 15	-
SBG20FL / SBI20FL	RCS 20	-
SBG20SL / SBI20SL	RCS 20	RCP 20-2
SBG20FLL / SBI20FLL	RCS 20	-
SBG20SLL / SBI20SLL	RCS 20	RCP 20-2
SBS20SL / SBI20CL	RCS 20	-
SBS20SLL / SBI20CLL	RCS 20	-
SBS20FV / SBI20FV	RCS 20	-
SBS20SV / SBI20SV	RCS 20	-
SBG25FL / SBI25FL	RCS 25	-
SBG25SL / SBI25SL	RCS 25	RCP 25-4
SBG25FLL / SBI25FLL	RCS 25	-
SBG25SLL / SBI25SLL	RCS 25	RCP 25-4
SBS25HL / SBI25HL	RCS 25	-
SBS25HLL / SBI25HLL	RCS 25	-
SBG30FL / SBI30FL	RCS 30	-
SBG30SL / SBI30SL	RCS 30	RCP 30-3
SBG30FLL / SBI30FLL	RCS 30	-
SBG30SLL / SBI30SLL	RCS 30	RCP 30-3
SBS30SL / SBI30HL	RCS 30	-
SBS30SLL / SBI30HLL	RCS 30	-
SBG35FL / SBI35FL	RCS 35	-
SBG35SL / SBI35SL	RCS 35	RCP 35-7
SBG35FLL / SBI35FLL	RCS 35	-
SBG35SLL / SBI35SLL	RCS 35	RCP 35-7
SBS35SL / SBI35HL	RCS 35	-
SBS35SLL / SBI35HLL	RCS 35	-

For other types - please contact Rollco.

Product Overview



BALL SCREWS
High efficiency ball screws and nuts.



LINEAR UNIT QME
Complete linear drive unit with ball bushings and ball screws.



LINEAR UNIT RHL
Complete unit with tooth belt.



LINEAR UNITS
Complete unit with ball screw or tooth belt.



ACTUATORS
Ready-to-use or customized solutions.



MINIATURE
Range from 3 mm up to 15 mm.



ROLLER GUIDES
Four raceways with rollers. High load capacity.



LINEAR RAIL SYSTEM
The most standardized linear rail system.



BALL BEARINGS
Linear ball bearings and hardened steel shafts.



BELLOWS
We produce and supply bellows according to your specific needs.



U-RAIL
Rollers in steel or polyamide. For light, standard or heavy load. Mounted in U-rails.



C-RAIL
A simple and cost effective linear bearing system.



LIGHT TELESCOPIC
Telescopic systems for smooth movement. Steel and aluminium.

Every care has been taken to ensure the accuracy of the information contained in this catalogue but no liability can be accepted for any errors or omissions. Even partial reproduction is allowed only by written permission by Rollco.

Rollco AB
Box 22234
Ekvändan 3
250 24 Helsingborg
Sweden
Tel. +46 42 150040
Fax +46 42 150045
www.rollco.se

Rollco A/S
Bramdrupskovvej 15
6000 Kolding
Denmark
Tel. +45 7552 2666
Fax +45 7552 0708
www.rollco.dk

Rollco OY
Kuohuntie 2
36200 Kangasala
Finland
Tel. +358 207 57 97 90
Fax +358 207 57 97 99
www.rollco.fi

Rollco Norge AS
Bergliveien 2
3400 Lier
Norway
Tel. +47 32 84 00 34
Fax +47 32 84 00 91
www.rollco.no

Rollco Taiwan
No. 28, Lane 125, Da-an Road
Shulin District 238
New Taipei City, Taiwan
Tel. +886-2-8687-2726
Fax +886-2-8687-2720
www.rollco-tw.com



ROLLCO
SPECIALIZED
ON LINEAR MOTION