

# STANDARD DEPARTURE CHART-INSTRUMENT

VAR3° W

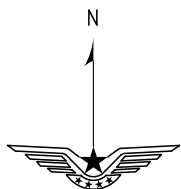
ZLIC YINCHUAN/Hedong

RWY21

ATIS 126.65  
APP01 124.05(119.1)  
APP02 125.6(119.1)  
APP03 126.075(119.1)  
APP04 119.4(119.1)  
TWR 118.35(130.0)

BEARINGS ARE MAGNETIC  
ALTITUDES, ELEVATIONS  
AND HEIGHTS IN METERS  
DME DISTANCES IN  
NAUTICAL MILES  
DISTANCES IN KM

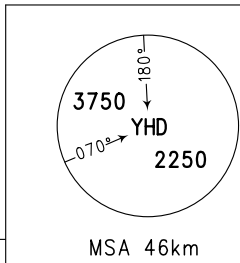
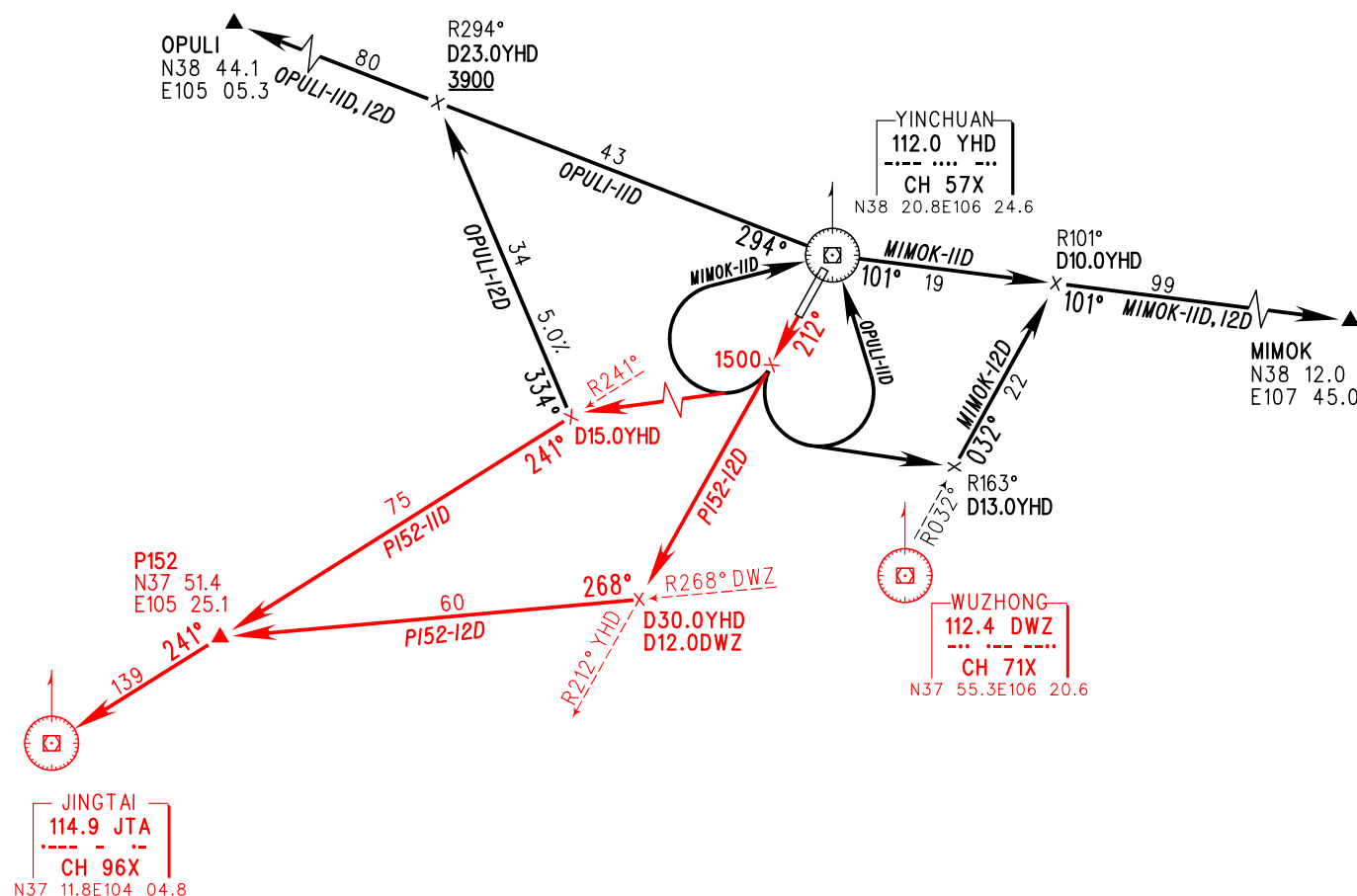
TL 3600  
TA 3000  
3300 (QNH≥1031hPa)  
2700 (QNH≤979hPa)



NOT TO SCALE

Note:

1. MIMOK-11D: climb straight ahead to 1500, turn RIGHT to YHD, then join in route.
2. OPULI-11D: climb straight ahead to 1500, turn LEFT to YHD, then join in route.
3. Departure turn MAX IAS 380kmh



Changes: P152-IID,I2D