

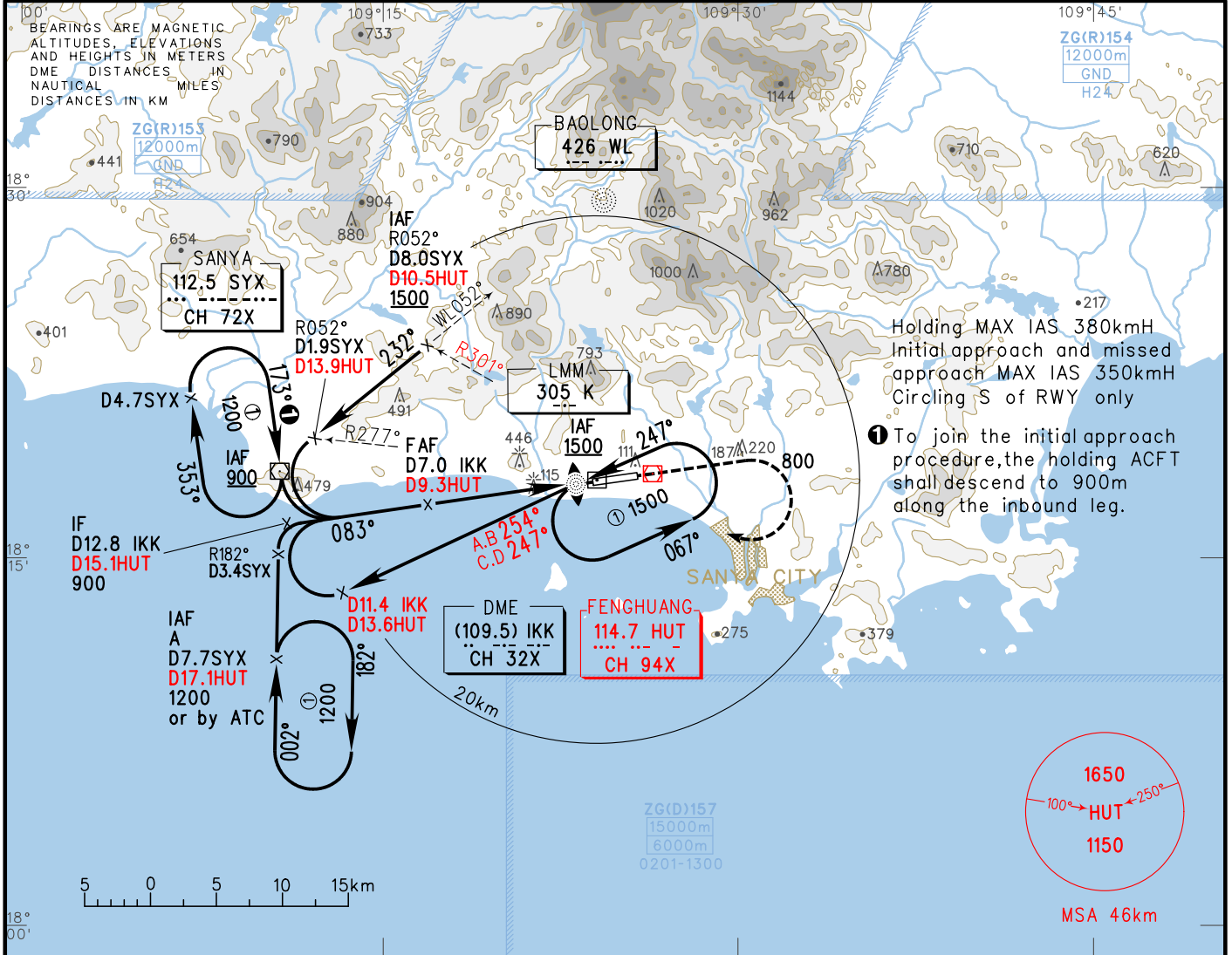
INSTRUMENT APPROACH CHART-ICAO

VAR1°W

AERODROME ELEV 29
THR RWY 08 ELEV 18.5

ATIS 126.45
APP 125.55(119.25)
TWR 118.15(118.85)

ZJSY SANYA/Phoenix
NDB/DME RWY08



DME (IKK) (NM)	8	7	6	5	4	3	2	1
ALT (m)			600	503				

TL 3600
TA 3000
3300(QNH ≥ 1031hPa)
2700(QNH ≤ 979hPa)

MISSED APPROACH

Climb straight ahead to 800, turn RIGHT to K at 1200, then inbound to 'SYX' on track 274°, or by ATC.

