

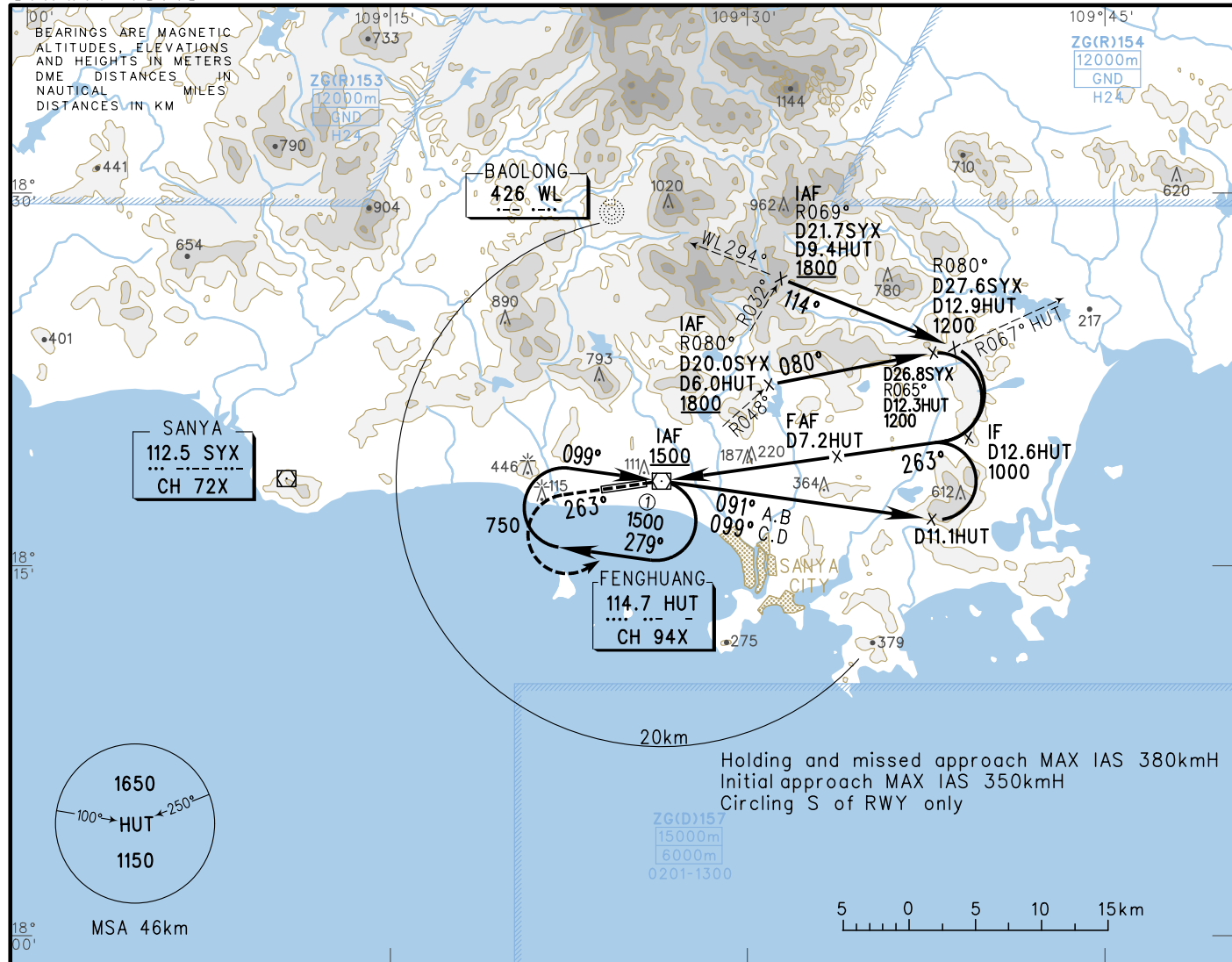
INSTRUMENT APPROACH CHART-ICAO

VAR1° W

AERODROME ELEV 29
THR RWY 26 ELEV 26.7

ATIS 126.45
APP 125.55(119.25)
TWR 118.15(118.85)

ZJSY SANYA/Phoenix
VOR/DME RWY26

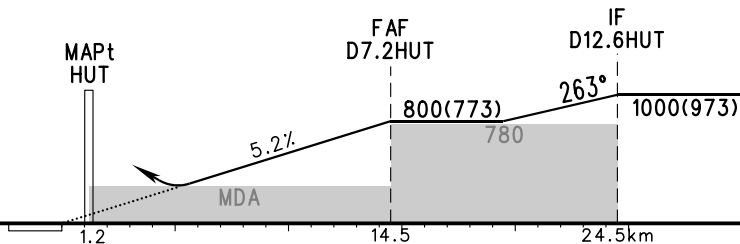


| | | | | | | | | |
|----------------|---|---|-----|-----|-----|-----|-----|---|
| DME (HUT) (NM) | 1 | 2 | 3 | 4 | 5 | 6 | 7 | 8 |
| ALT (m) | | | 394 | 491 | 588 | 624 | 782 | |

MISSED APPROACH

Climb straight ahead to 750, turn LEFT and inbound to 'HUT' at 1500, or by ATC.

TL 3600
TA 3000
3300(QNH ≥ 1031hPa)
2700(QNH ≤ 979hPa)



| VOR/DME MDA(H) VIS | A | B | C | D | FAF-MAPt 13.3km | | | | | | |
|--------------------|---|------------------|------------------|---|---------------------|----------|------|------|------|------|------|
| | | | 310(283) 4600 | | | GS in kt | 80 | 100 | 120 | 140 | 160 |
| | | 495(467) 5000 | | | kmH | 150 | 185 | 220 | 260 | 295 | 335 |
| | | | | | Time min:sec | 5:23 | 4:19 | 3:35 | 3:05 | 2:42 | 2:24 |
| | | | | | Rate of descent m/s | 2.2 | 2.7 | 3.2 | 3.8 | 4.3 | 4.9 |

Changes: Missed approach.