

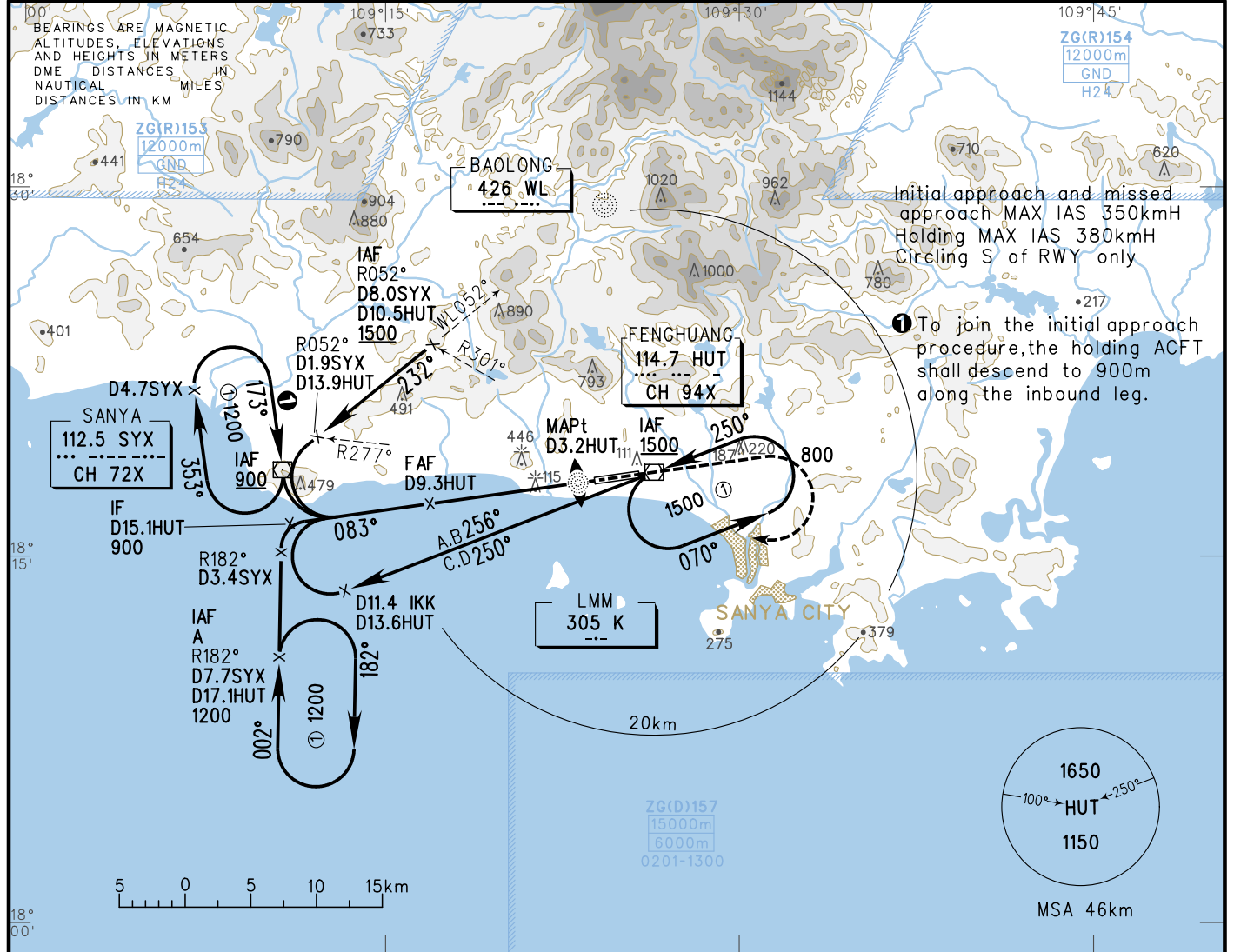
INSTRUMENT APPROACH CHART-ICAO

VAR1°W

AERODROME ELEV 29
THR RWY 08 ELEV 18.5

ATIS 126.45
APP 125.55(119.25)
TWR 118.15(118.85)

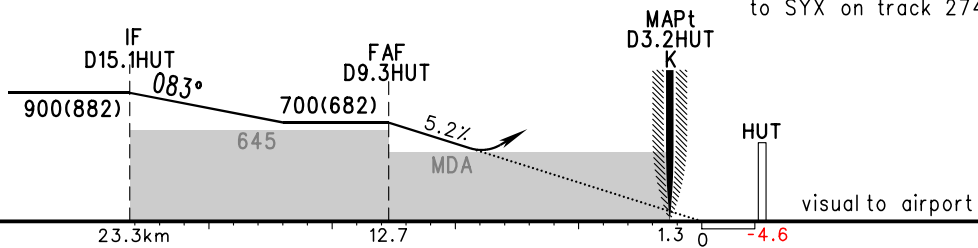
ZJSY SANYA/Phoenix
VOR/DME RWY08



DME (HUT) (NM)	10	9	8	7	6	5	4	3
ALT (m)		667	570					

TL 3600
TA 3000
3300(QNH ≥ 1031hPa)
2700(QNH ≤ 979hPa)

MISSED APPROACH
Climb straight ahead to 800, turn RIGHT to K at 1200, then inbound to SYX on track 274°, or by ATC.



VOR/DME MDA(H) VIS	A	B	C	D	FAF-MAPt 11.4km						
					GS in kt	80	100	120	140	160	180
					kmH	150	185	220	260	295	335
					Time min:sec	4:37	3:42	3:05	2:38	2:18	2:03
					Rate of descent m/s	2.2	2.7	3.2	3.8	4.3	4.9

Changes: Page number.