

STANDARD DEPARTURE CHART-INSTRUMENT

VAR1° W

D-ATIS 127.65
APP01 119.15(120.225)
APP02 119.975(120.225)
TWR 118.55(124.3)

ZJHK HAIKOU/Meilan
RWY27

BEARINGS ARE MAGNETIC
ALTITUDES, ELEVATIONS
AND HEIGHTS IN METERS
DME DISTANCES IN
NAUTICAL MILES
DISTANCES IN KM

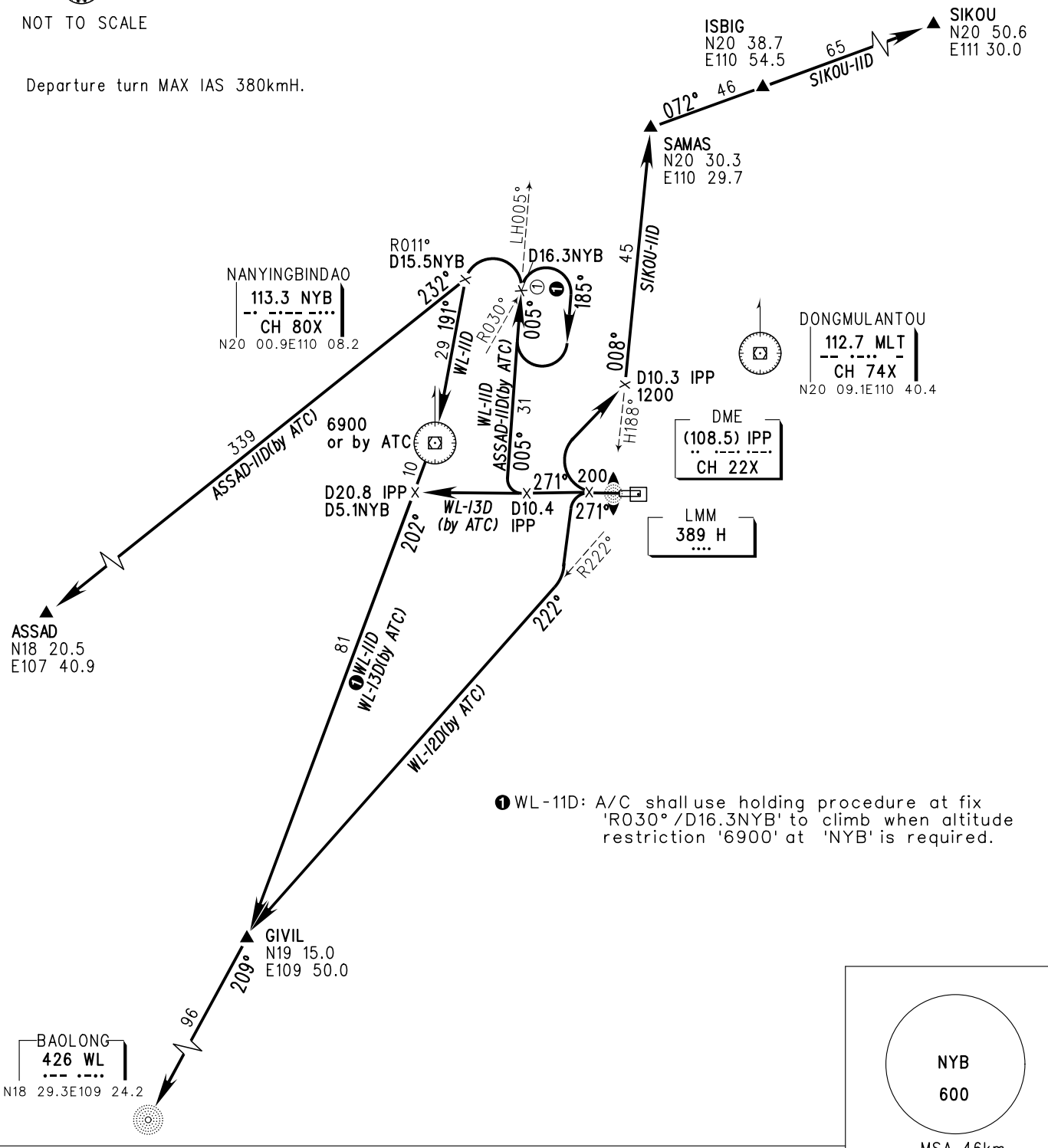
HUGUANG
356 LH
N21 08.1E110 20.0

TL 3600
TA 3000
3300(QNH ≥ 1031hPa)
2700(QNH ≤ 979hPa)



NOT TO SCALE

Departure turn MAX IAS 380kmH.



① WL-11D: A/C shall use holding procedure at fix 'R030° / D16.3NYB' to climb when altitude restriction '6900' at 'NYB' is required.

NYB
600
MSA 46km

Changes: APP FREQ.