

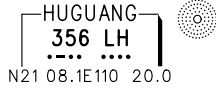
# STANDARD DEPARTURE CHART-INSTRUMENT

VAR1° W

D-ATIS 127.65  
 APP01 119.15(120.225)  
 APP02 119.975(120.225)  
 TWR 118.55(124.3)

ZJKH HAIKOU/Meilan  
 RWY09

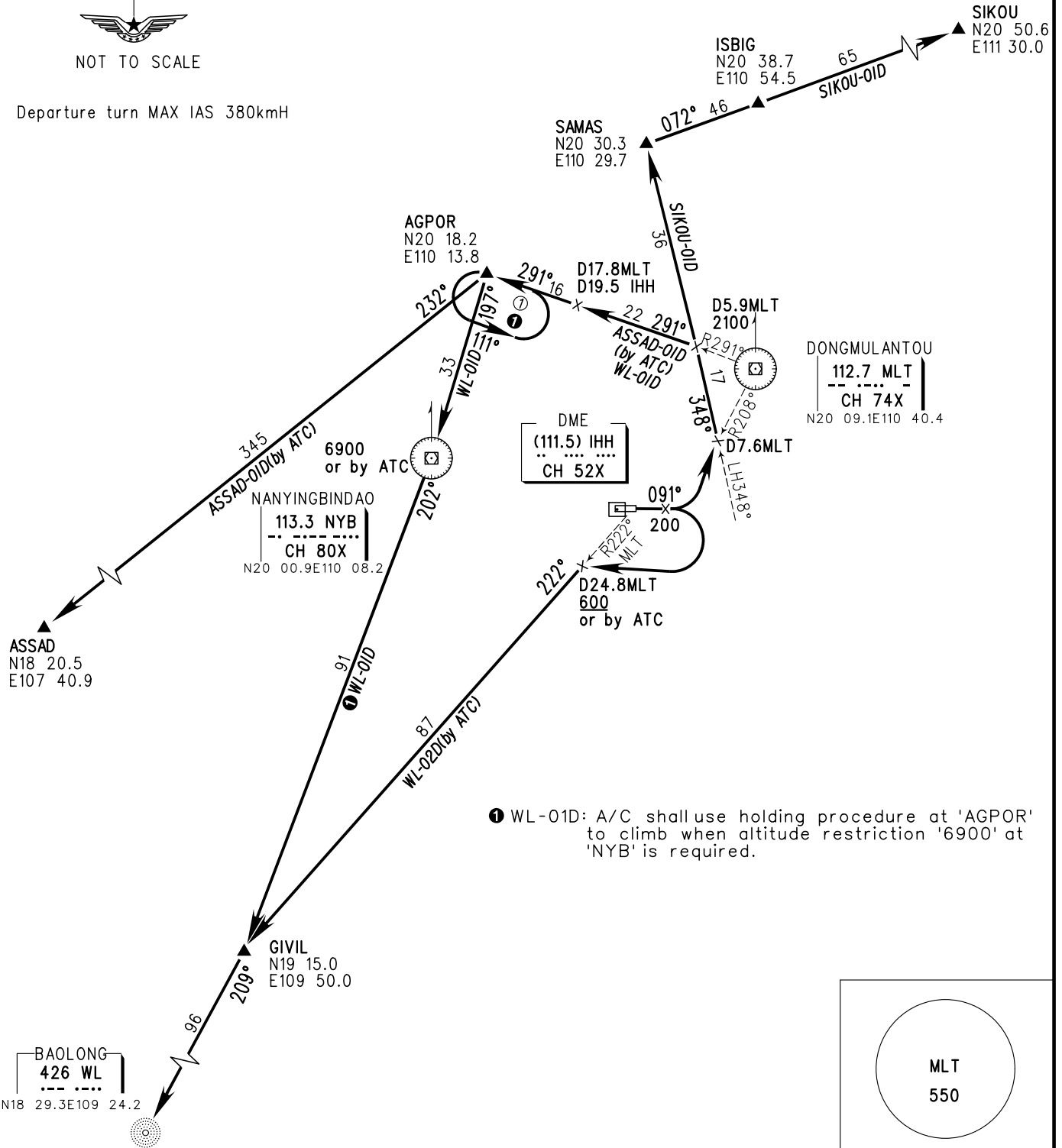
BEARINGS ARE MAGNETIC  
 ALTITUDES, ELEVATIONS  
 AND HEIGHTS IN METERS  
 DME DISTANCES IN  
 NAUTICAL MILES  
 DISTANCES IN KM



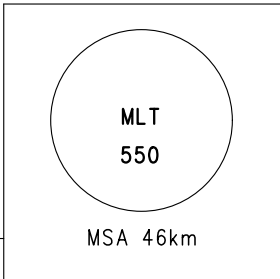
TL 3600  
 TA 3000  
 3300(QNH ≥ 1031hPa)  
 2700(QNH ≤ 979hPa)



Departure turn MAX IAS 380kmh



① WL-01D: A/C shall use holding procedure at 'AGPOR' to climb when altitude restriction '6900' at 'NYB' is required.



Changes: APP FREQ.