

ATIS 127.6(ARR)
 APP 119.65(120.6) /APP01
 125.65(125.05)/APP02
 124.6(125.05) /APP03
 TWR 118.55/118.025(118.175)

STANDARD ARRIVAL CHART-INSTRUMENT

VAR3° W

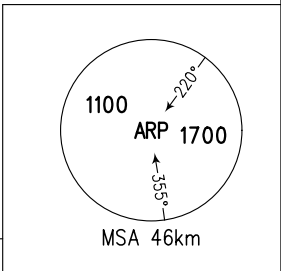
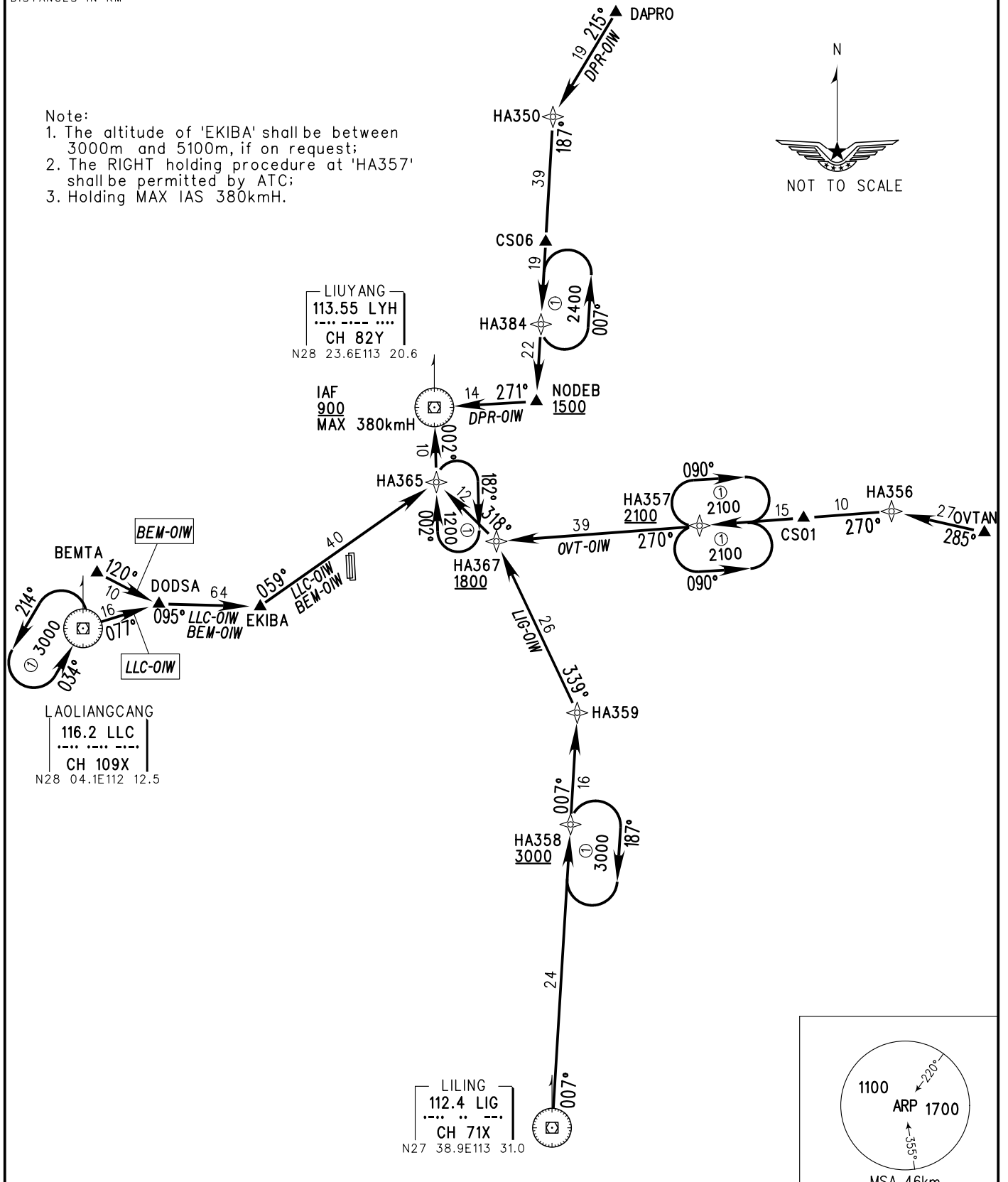
ZGHA CHANGSHA/Huanghua

RNAV RWY18L/R

BEARINGS ARE MAGNETIC
 ALTITUDES, ELEVATIONS
 AND HEIGHTS IN METERS
 DME DISTANCES IN
 NAUTICAL MILES
 DISTANCES IN KM

RNP 1 GNSS REQUIRED	RNAV 1 or RADAR REQUIRED GNSS REQUIRED	TL 3600 TA 3000 3300(QNH≥1031hPa) 2700(QNH≤979hPa)
------------------------	--	---

- Note:
- The altitude of 'EKIBA' shall be between 3000m and 5100m, if on request;
 - The RIGHT holding procedure at 'HA357' shall be permitted by ATC;
 - Holding MAX IAS 380kmH.



Changes: *FREQ.*