

ATIS 127.075(DEP)  
 APP 119.65(120.6) /APP01  
 125.65(125.05)/APP02  
 124.6(125.05) /APP03  
 VAR3°W TWR 118.55/118.025(118.175)

# STANDARD DEPARTURE CHART-INSTRUMENT

## ZGHA CHANGSHA/Huanghua

RNAV RWY18R

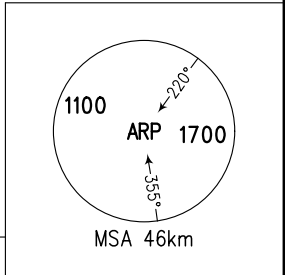
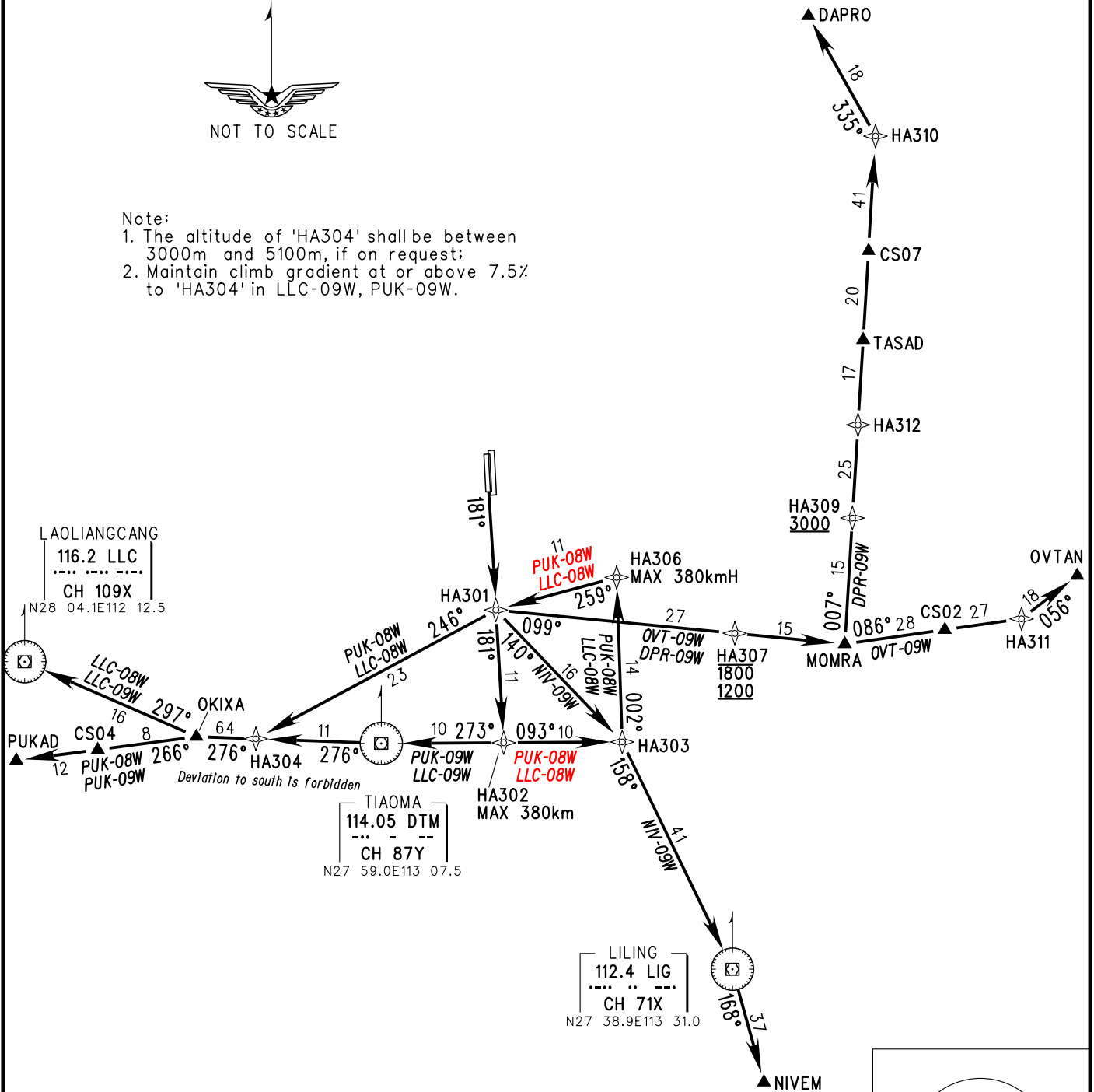
BEARINGS ARE MAGNETIC  
 ALTITUDES, ELEVATIONS  
 AND HEIGHTS IN METERS  
 DME DISTANCES IN  
 NAUTICAL MILES  
 DISTANCES IN KM

RNP 1 GNSS REQUIRED	RNAV 1 or RADAR REQUIRED GNSS REQUIRED	TL 3600 TA 3000 3300(QNH≥1031hPa) 2700(QNH≤979hPa)
------------------------	--	---



Note:

1. The altitude of 'HA304' shall be between 3000m and 5100m, if on request;
2. Maintain climb gradient at or above 7.5% to 'HA304' in LLC-09W, PUK-09W.



Changes: ATIS, TWR, PUK-08W, LLC-08W.