

# STANDARD ARRIVAL CHART-INSTRUMENT

VAR2° W

ZGGG  
GUANGZHOU/Baiyun  
RWY19/20L/20R

BEARINGS ARE MAGNETIC  
ALTITUDES, ELEVATIONS  
AND HEIGHTS IN METERS  
DME DISTANCES IN  
NAUTICAL MILES  
DISTANCES IN KM

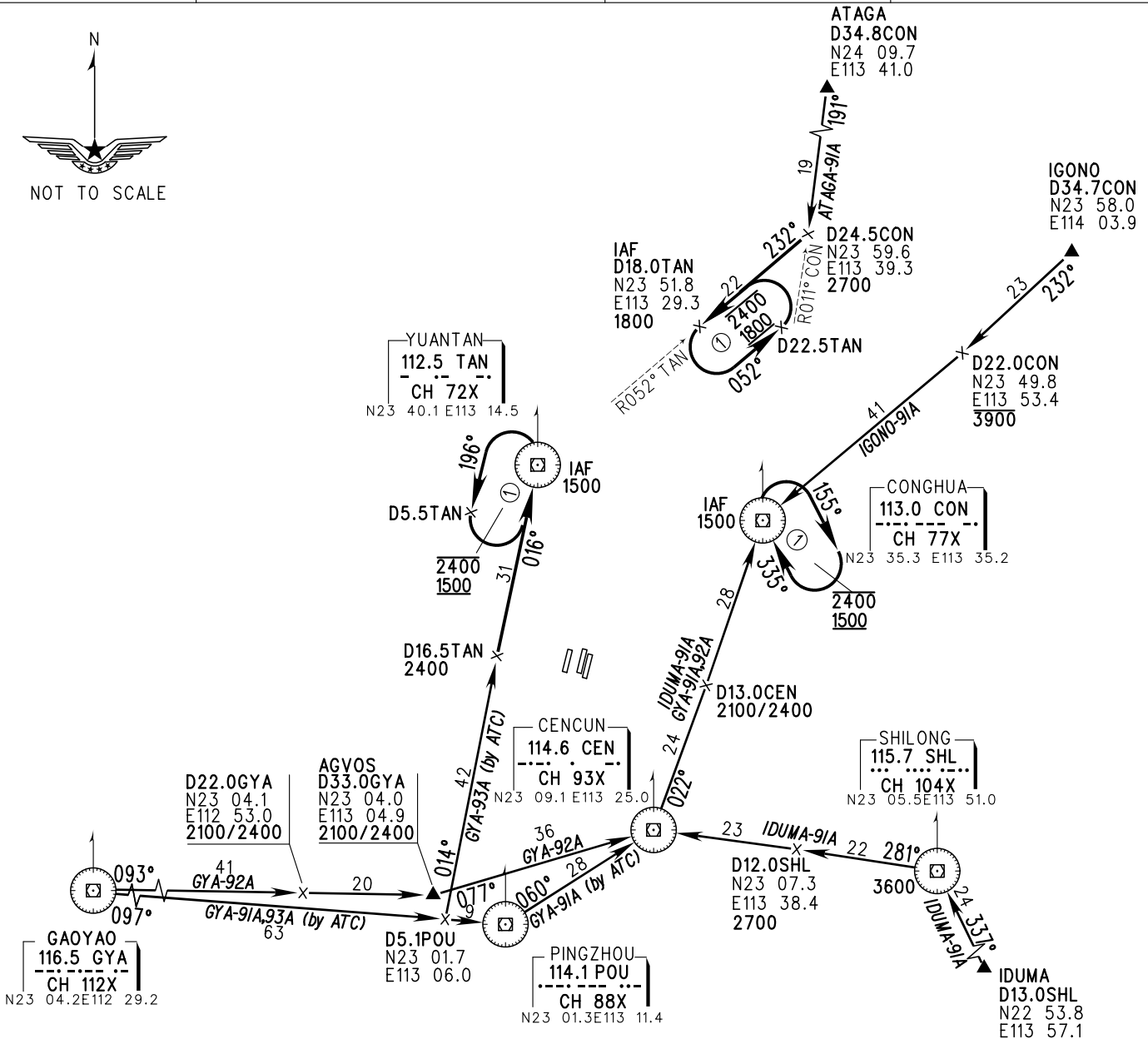
D-ATIS 128.6  
TWR 118.8(130.0, 124.3) for RWY01/19  
118.1(130.0, 124.3) for RWY02L/20R  
118.25(124.3) for RWY02R/20L

APP 126.55(127.75)/AP01  
119.70(127.75)/AP02  
126.35(119.60)/AP03  
121.05(124.20)/AP04  
120.40(124.20)/AP05  
121.175(127.75)/AP06

TL 3600(QNH <980hPa)  
3300(QNH ≥980hPa)  
TA 2700



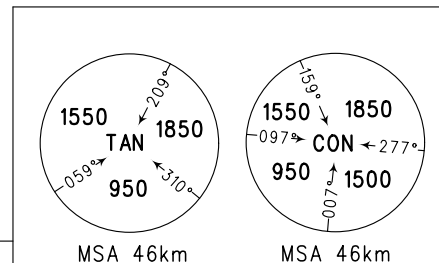
NOT TO SCALE



**Notes:**

- Under radar control service, actual flight ALT instructed by ATC.
- Holding over YUANTAN 'TAN' needs ATC permission.
- Speed limits:**

Under the condition that aircraft performance allows, maintain IAS 390-410kmH(210-220kt) when flying by D18.0TAN, CON, D16.5TAN, D13.0CEN.



Changes: Notes.