

STANDARD DEPARTURE CHART-INSTRUMENT

VAR2° W

ZGGG
GUANGZHOU/Baiyun
RNAV RWY20L

BEARINGS ARE MAGNETIC ALTITUDES, ELEVATIONS
AND HEIGHTS IN METERS DME DISTANCES IN
NAUTICAL MILES DISTANCES IN KM

D-ATIS 127.0
APP 126.55(127.75)/AP01
119.70(127.75)/AP02
126.35(119.60)/AP03
121.05(124.20)/AP04
120.40(124.20)/AP05
121.175(127.75)/AP06
TWR 118.25(124.3) for RWY02R/20L

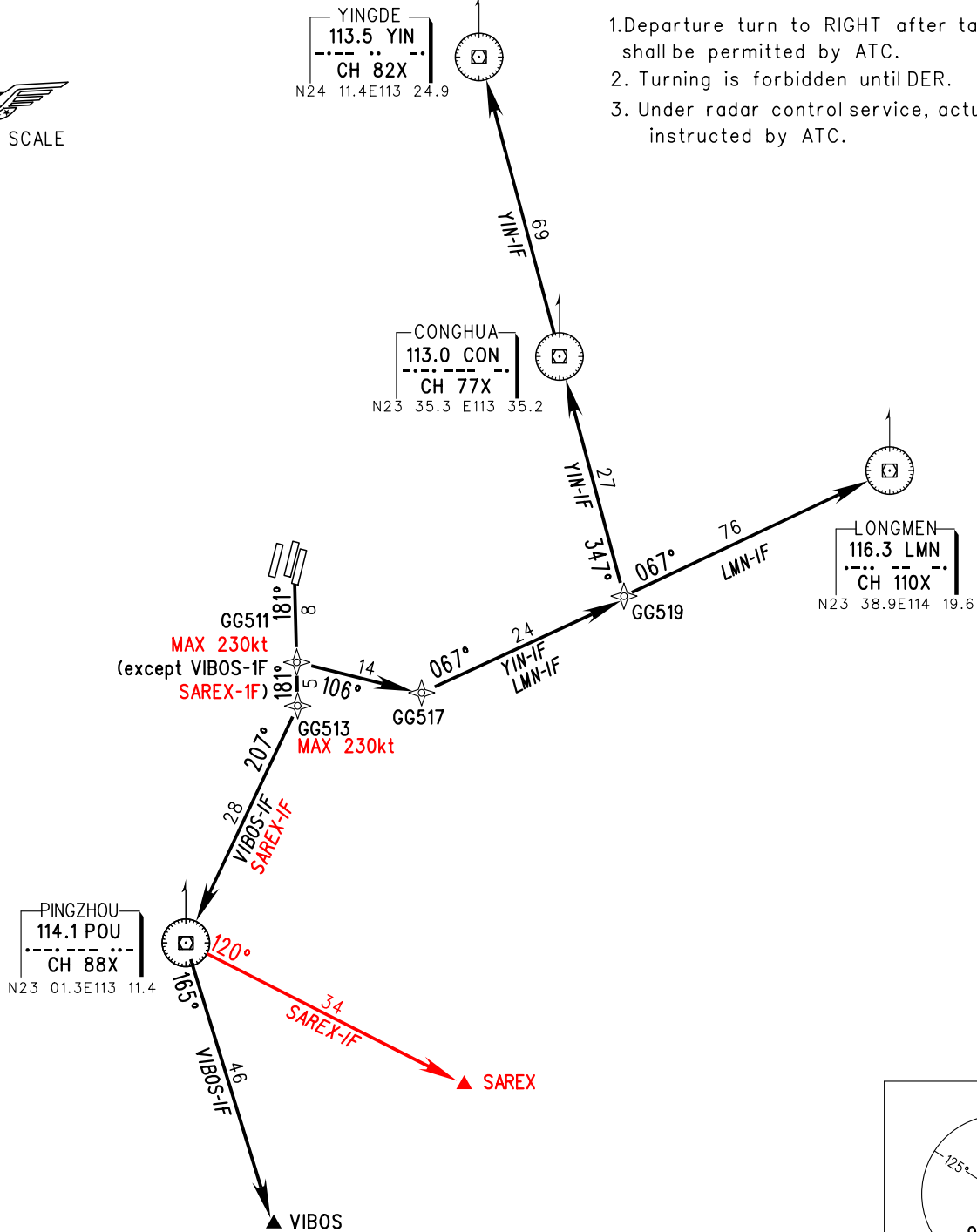
TL 3600(QNH<980hPa)
3300(QNH>980hPa)
TA 2700

- | | | |
|-------------------------------|----|------------------|
| 1. RNAV 1 | or | 1. RNP1 |
| 2. GNSS, DME/DME/IRU REQUIRED | | 2. GNSS REQUIRED |
| 3. RADAR REQUIRED | | |



Notes:

1. Departure turn to RIGHT after take-off shall be permitted by ATC.
2. Turning is forbidden until DER.
3. Under radar control service, actual flight ALT instructed by ATC.



Changes: Procedure.