

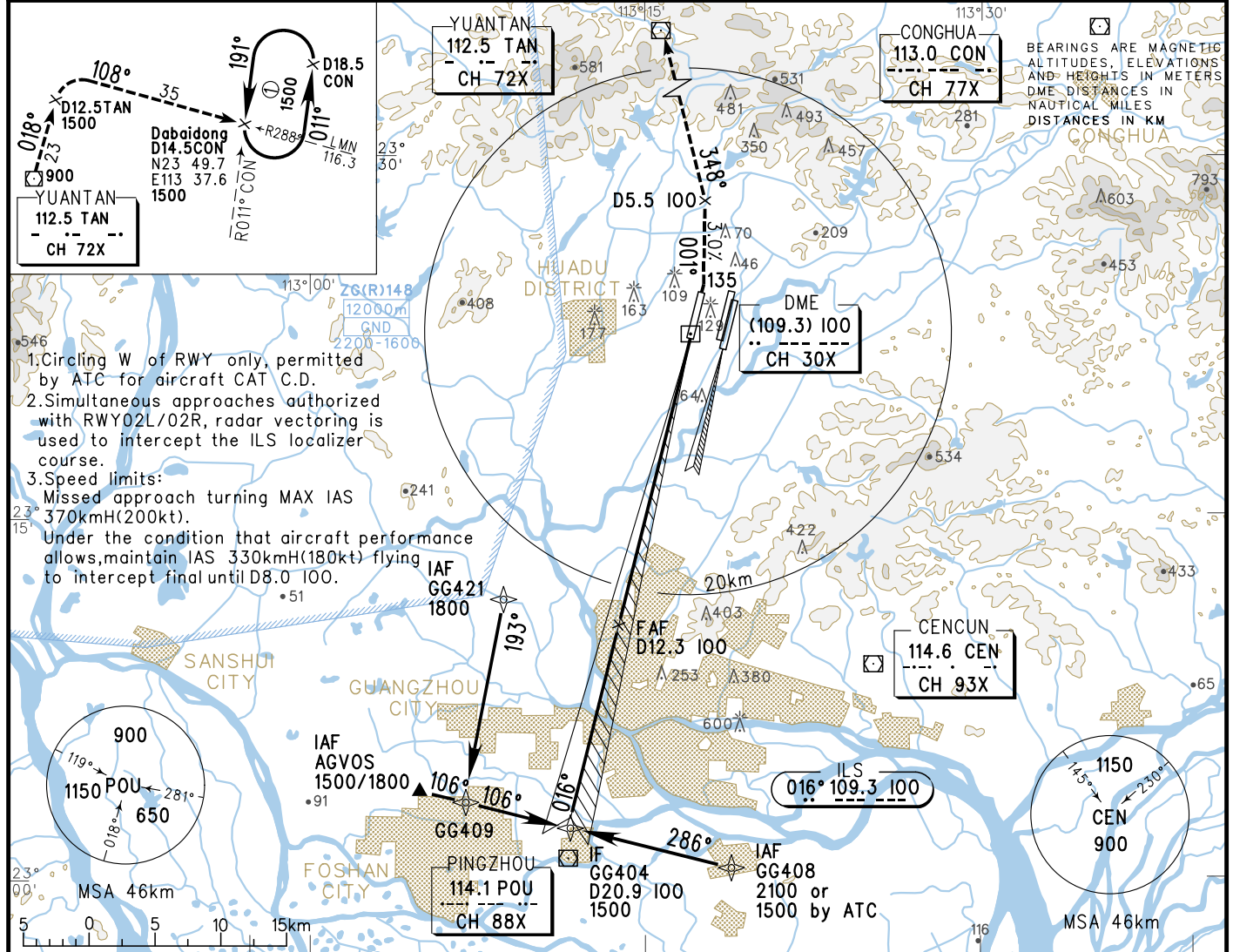
INSTRUMENT APPROACH CHART-ICAO

VAR2° W

TWR 118.8(130.0, 124.3)	APP 126.55(127.75)/AP01
	119.70(127.75)/AP02
D-ATIS 128.6	126.35(119.60)/AP03
	121.05(124.20)/AP04
AERODROME ELEV 15	120.40(124.20)/AP05
THR RWY01 ELEV 12.4	121.175(127.75)/AP06

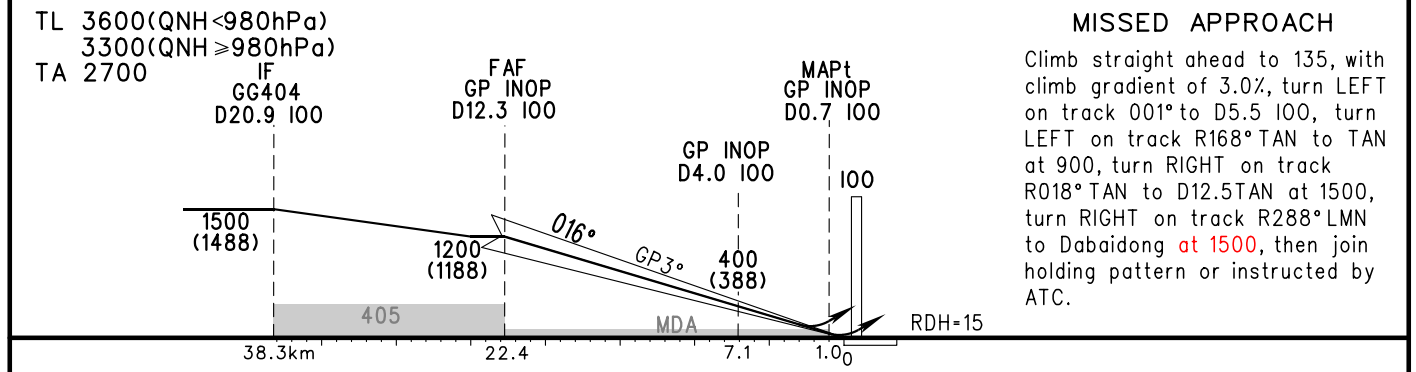
ZGGG GUANGZHOU/Baiyun

RNAV ILS/DME z RWY01



1. Circling W of RWY only, permitted by ATC for aircraft CAT C.D.
2. Simultaneous approaches authorized with RWY02L/02R, radar vectoring is used to intercept the ILS localizer course.
3. Speed limits:
Missed approach turning MAX IAS 370kmH(200kt).
Under the condition that aircraft performance allows, maintain IAS 330kmH(180kt) flying to intercept final until D8.0 100.

GP INOP	DME (100) (NM)	12	10	8	6	4	2	
	ALT (m)	1175	981	787	593	400	205	



TL 3600(QNH<980hPa)	MISSED APPROACH					
TA 2700	Climb straight ahead to 135, with climb gradient of 3.0%, turn LEFT on track 001° to D5.5 100, turn LEFT on track R168° TAN to TAN at 900, turn RIGHT on track R018° TAN to D12.5TAN at 1500, turn RIGHT on track R288° LMN to Dabaidong at 1500, then join holding pattern or instructed by ATC.					
	IF GP INOP	FAF GP INOP	MAPt GP INOP			
	GG404 D20.9 100	D12.3 100	GP INOP D4.0 100	100		
	405		MDA	RDH=15		
	38.3km	22.4	7.1	1.0		
ILS/DME	FAF-MAPT(GP INOP) 21.4km					
DA(DH) RVR/VIS	72(60) 550/800					GS in kt kmH
						80 150
						100 185
						120 220
						140 260
						160 295
						180 335
GP INOP	MDA(H) VIS					Time min:sec
	115(103) 1100		115(103) 1200			8:40
						6:56
						5:47
						4:57
						4:20
						3:51
CIRCLING	MDA(H) VIS					Rate of descent m/s
	220(205) 2300	255(240) 2300	355(340) 4400	355(340) 5000		2.2
						2.7
						3.2
						3.8
						4.3
						4.9

Changes: Missed approach procedure.