

# STANDARD DEPARTURE CHART-INSTRUMENT

VAR5° W

ATIS 127.85  
 APP01 120.45(124.75)  
 APP02 119.125(124.75)  
 TWR 118.35(123.65)

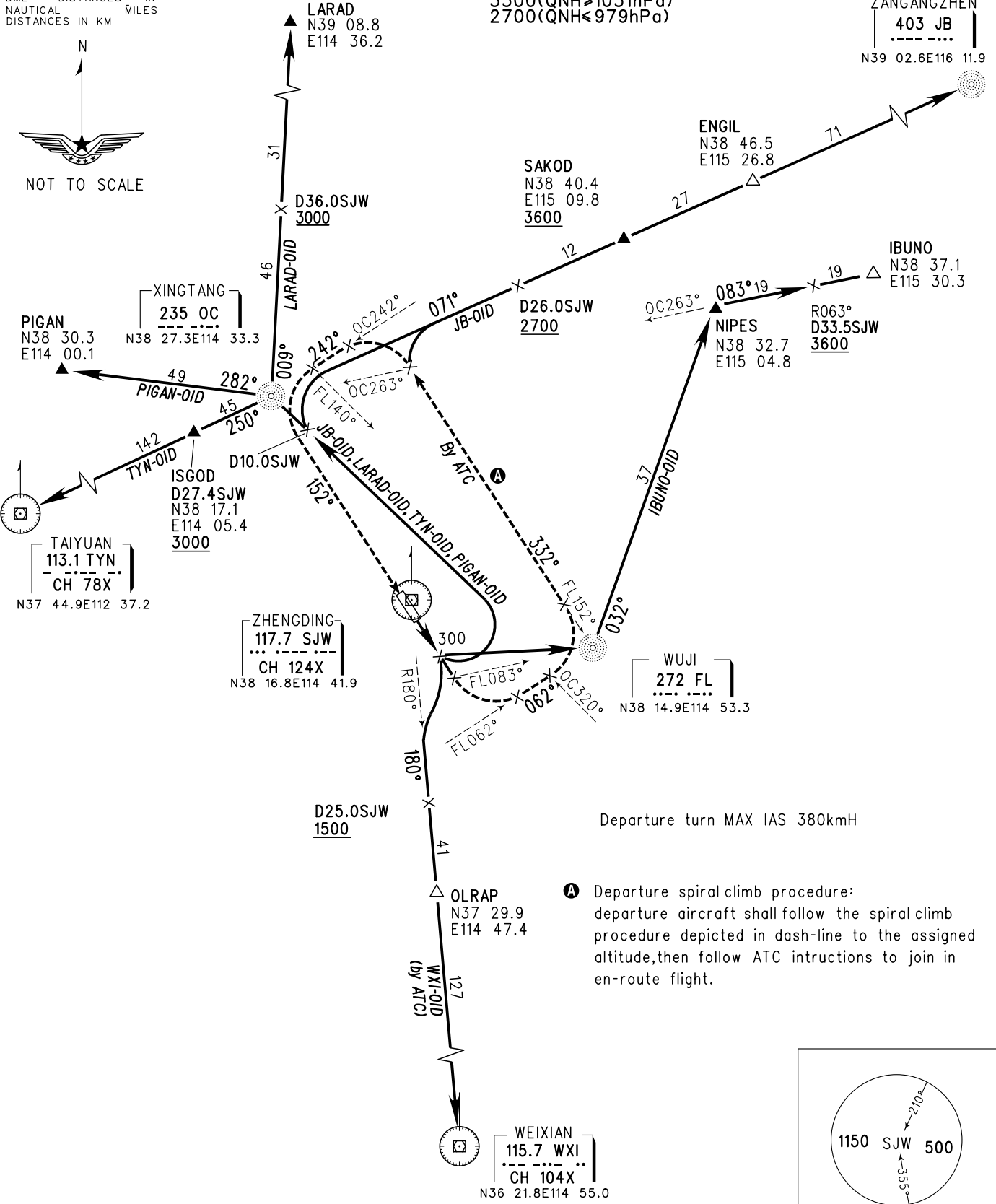
ZBSJ SHIJIAZHUANG/Zhengding  
 RWY15

BEARINGS ARE MAGNETIC  
 ALTITUDES, ELEVATIONS  
 AND HEIGHTS IN METERS  
 DME DISTANCES IN  
 NAUTICAL MILES  
 DISTANCES IN KM

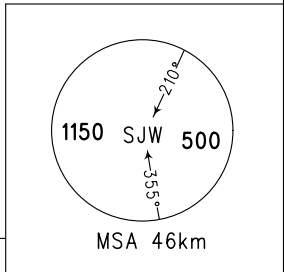


TL 3600  
 TA 3000  
 3300(QNH>1031hPa)  
 2700(QNH<979hPa)

ZANGANGZHEN  
 403 JB  
 N39 02.6E116 11.9



**A** Departure spiral climb procedure:  
 departure aircraft shall follow the spiral climb  
 procedure depicted in dash-line to the assigned  
 altitude, then follow ATC instructions to join in  
 en-route flight.



Changes: APP01, APP02.