

INSTRUMENT APPROACH CHART-ICAO

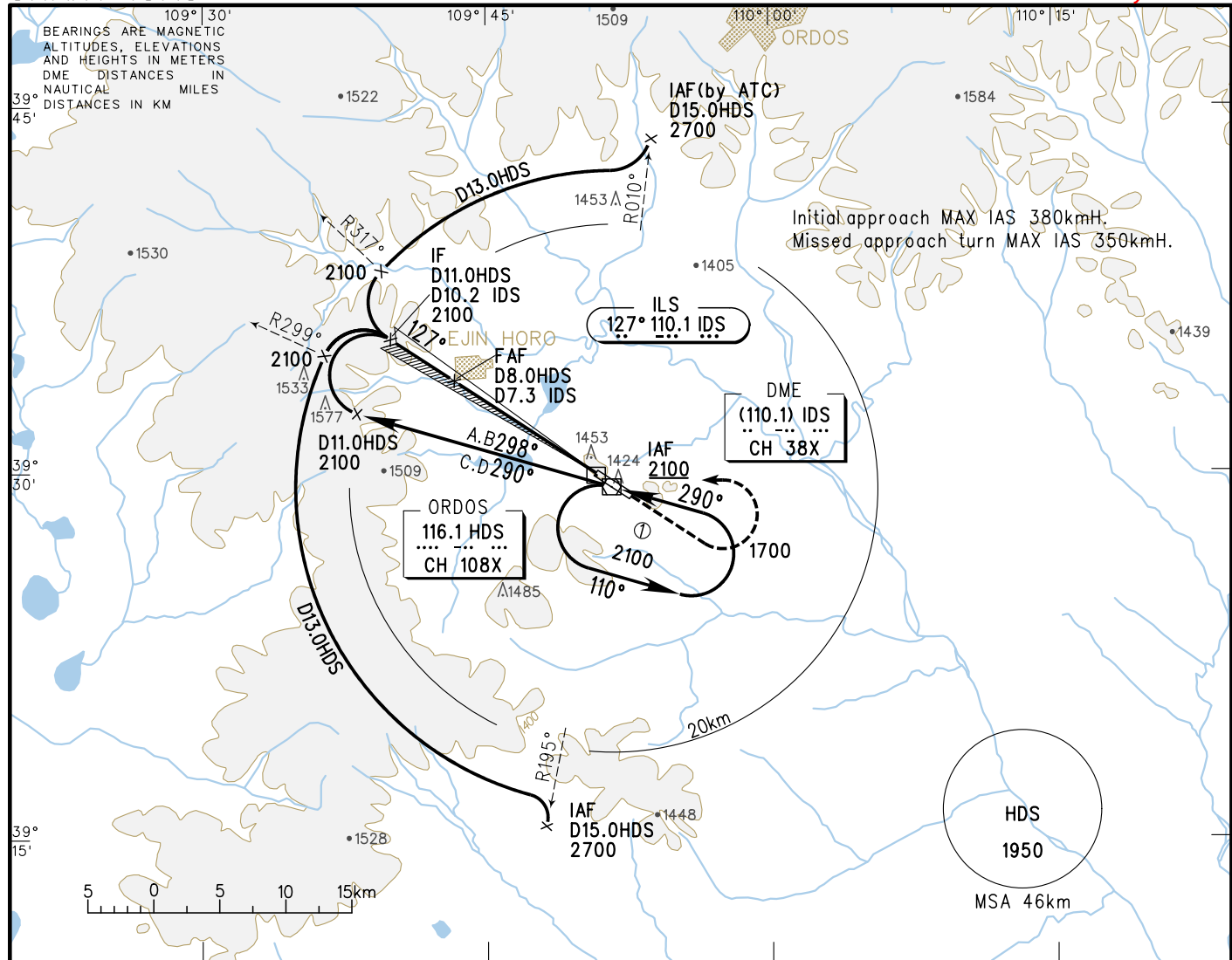
VAR 4° W

AERODROME ELEV 1400

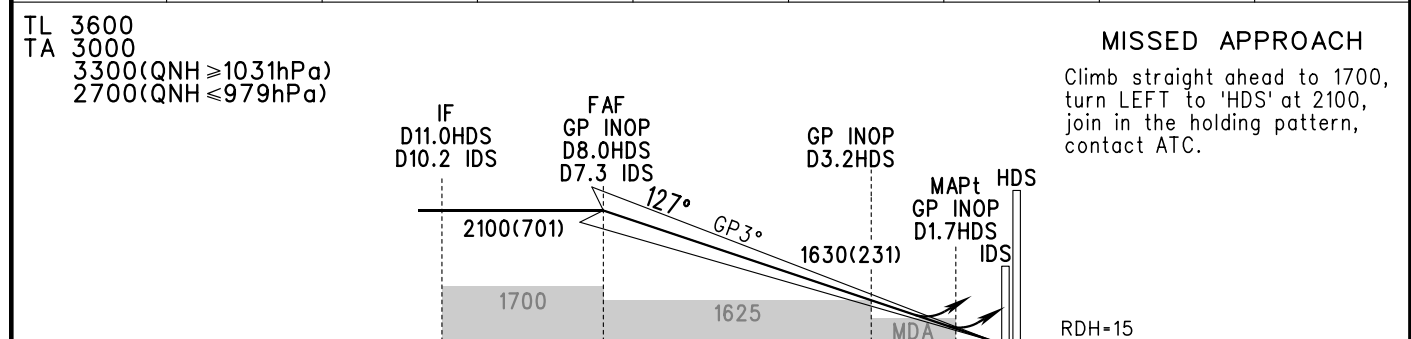
THR RWY13 ELEV 1399.6

TWR 118.15(118.8)

ZBDS ORDOS/Ejin Horo
ILS/DME y RWY13



GP INOP	DME (HDS) (NM)	8	7	6	5	4	3	2
	ALT (m)		2002	1905	1808	1711	1614	



TL 3600 TA 3000 3300(QNH ≥ 1031hPa) 2700(QNH ≤ 979hPa)	MISSED APPROACH Climb straight ahead to 1700, turn LEFT to 'HDS' at 2100, join in the holding pattern, contact ATC.										
	IF D11.0HDS D10.2 IDS	FAF GP INOP D8.0HDS D7.3 IDS	GP INOP D3.2HDS	MAPt GP INOP D1.7HDS IDS	HDS						
	2100(701)	2100(701)	1630(231)	1630(231)	1630(231)	RDH-15					
	18.5km	13.1	4.1	1.4	0						
	FAF-MAPt(GP INOP) 11.7km										
ILS/DME	DA(H) RVR/VIS	1465(65) 550/800	1470(70) 550/800	1475(75) 550/800	GS in kt kmH	80 150	100 185	120 220	140 260	160 295	180 335
GP INOP	MDA(H) VIS	1530(130) 1800			Time min:sec	4:44	3:47	3:10	2:42	2:22	2:06
CIRCLING	MDA(H) VIS	1636(236) 3800	1670(270) 3800	1670(270) 4000	Rate of descent m/s	2.2	2.7	3.2	3.8	4.3	4.9
<i>Changes: Chart name.</i>											